

# **ARIZONA**

## **MOTOR VEHICLE CRASH FACTS**

### **2007**





# 2007 Motor Vehicle Crash Facts for the State of Arizona

*Prepared by:*  
*The Arizona Department of Transportation*  
*Motor Vehicle Division*

**Publication Date: February 17, 2009**



This publication is an annual statistical review of the motor vehicle crashes in the State of Arizona for the calendar year 2007. The results are compiled from Arizona Traffic Accident Reports submitted to the Arizona Department of Transportation by state, county, city, tribal, and other law enforcement agencies. Specific inquiries regarding the data in this report should be directed to:

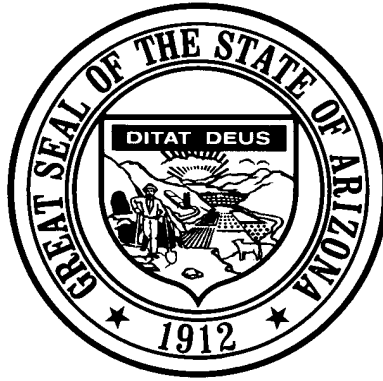
**The Arizona Department of Transportation**  
**Motor Vehicle Division**  
**Traffic Records Section**  
**206 S. 17<sup>th</sup> Ave. MD 064R**  
**Phoenix, AZ 85007**

**E-mail: [azcrashfacts@azdot.gov](mailto:azcrashfacts@azdot.gov)**

**Phone: (602) 712-3570**

In order to provide the most current information, preliminary data is utilized when necessary. For this reason, previous or future reports may differ slightly and we encourage you to refer to the latest issue of Motor Vehicle Crash Facts.

This issue as well as previous issues of this publication may be viewed and downloaded from ADOT's Web Site at:  
<http://www.azdot.gov/mvd/Statistics/crash/index.asp>



**Janice K. Brewer**  
Governor

**Arizona Department of Transportation**

**John S. Halikowski**  
Director

**Motor Vehicle Division**  
**Stacey K. Stanton**  
Director

**State Transportation Board**

**Delbert Householder – District 4**  
Chairman

**Robert Montoya – District 5**  
Vice Chairman

Members

**Felipe Andres Zubia – District 1**

**Victor Flores – District 1**

**S.L. Schorr – District 2**

**Barbara (Bobbie) Ann Lundstrom – District 3**

**William (Bill) J. Feldmeier – District 6**

**OVERVIEW**

**Section 1: – Highlights and Historical Trends .....1**

**Section 2: – Geographic Location.....9**

**Section 3: – Crash Descriptions .....17**

**Section 4: – Safety Devices .....23**

**Section 5: – Motor Vehicle and Driver Descriptions .....26**

**Section 6: – Alcohol Related Crashes.....32**

**Section 7: – Pedestrian and Pedalcyclists Crashes.....41**

**Section 8: – Motorcycle (MC) Crashes .....46**

**Acknowledgements .....55**

# 2007 Arizona Crash Facts Summary

## Table of Contents

<b>Section 1: Highlights and Historical Trends</b> .....	<b>1</b>
Arizona Crash Facts Summary and Comparison.....	2
Arizona at a Glance – 2007 .....	2
Licensed Drivers, Motor Vehicle Registration and Crash History in Arizona .....	3
Historical Trends – Arizona and the United States .....	3
Statewide Economic Loss Due to Motor Vehicle Crashes .....	4
Average Economic Cost per Incident.....	4
Traffic Crashes in Arizona by Year.....	5
Victims of Motor Vehicle Crashes .....	6
Arizona’s 2007 Estimated Population .....	6
Victims of Motor Vehicle Crashes (Arizona Residents Only)*** .....	6
Vehicle Miles Traveled .....	7
Arizona vs. U.S. Fatality Rate .....	7
Traffic Fatalities by Geographic Region .....	7
Traffic Injuries by Geographic Region.....	7
Holiday Crash Statistics .....	8
<b>Section 2: Geographic Location</b> .....	<b>9</b>
Crash Severity by First Harmful Event Statewide.....	10
Crashes by County .....	10
Crash Severity by First Harmful Event in Urban Areas .....	11
Crash Severity by First Harmful Event in Rural Areas .....	11
Analysis by Jurisdiction .....	12
Total Fatalities by County for 2006 and 2007.....	15
Urban and Rural Crashes by Day of Week.....	16
Urban and Rural Fatal Crashes by Day of Week.....	16
All Urban and Rural Crashes vs. Urban and Rural Fatal Crashes by Month.....	16
<b>Section 3: Crash Descriptions</b> .....	<b>17</b>
Manner of Collision in Multi-Vehicle Crashes .....	18
Unusual Road Conditions.....	18
Lighting Conditions.....	18
Weather Conditions.....	19
Road Surface Type.....	19
Road Surface Conditions.....	19
Road Grade.....	19
All Crashes vs. Fatal Crashes by Time of Day - Weekdays.....	20
All Crashes vs. Fatal Crashes by Time of Day - Weekends .....	20
Crashes by Day of Week .....	21
Fatal Crashes by Day of Week .....	21
All Crashes vs. Fatal Crashes by Month .....	21
Crashes by Hour and Day of Week .....	22
<b>Section 4: Safety Devices</b> .....	<b>23</b>
Child Restraint Usage (less than five years old).....	24
Driver Restraint Usage .....	24
Front-Seat Passenger Restraint Usage.....	25
Rear-Seat Passenger Restraint Usage .....	25
<b>Section 5: Motor Vehicle and Driver Descriptions</b> .....	<b>26</b>
Arizona Motor Vehicle Registrations.....	27
Motor Vehicle Crash Involvement by Vehicle Type.....	27
Hit and Run Drivers Involved in Crashes.....	28
Gender of Drivers Involved in Crashes .....	28
License Status of Drivers Involved in Crashes.....	28

## 2007 Arizona Crash Facts Summary

Passengers Killed and Injured by Age and Gender*	28
Drivers and Occupants Killed and Injured by Vehicle Type	29
Drivers Killed and Injured by Age and Gender*	29
Licensed Drivers in Arizona by Age	30
Driver Involvement by Age	30
Driver Errors	31
Driver Physical Condition	31
<b>Section 6: Alcohol Related Crashes</b>	<b>32</b>
Economic Loss Due to Alcohol Related Crashes in Arizona for 2007	33
Alcohol Related Crash History	33
Manner of Collision in Alcohol Related Crashes	33
Alcohol Related Crashes by First Harmful Event	34
Alcohol Related Crashes by Vehicle Type	34
Lighting Conditions in Alcohol Related Crashes	35
Road Surface Conditions in Alcohol Related Crashes	35
Gender of Drivers Involved in Alcohol Related Crashes	35
Driver Involvement by Age in Alcohol Related Crashes	36
When Alcohol Related Crashes Occurred in 2007	36
Restraint Usage for Drinking Drivers	36
Persons Killed and Injured in Alcohol Related Crashes	37
Alcohol Related Crashes by County	37
All Alcohol Related Crashes vs. Fatal Alcohol Related Crashes by Day of Week	38
All Alcohol Related Crashes vs. Fatal Alcohol Related Crashes by Month	38
All Alcohol Related Crashes vs. Fatal Alcohol Related Crashes - Weekdays	39
All Alcohol Related Crashes vs. Fatal Alcohol Related Crashes - Weekends	39
Alcohol Related Crashes by Hour and Day of Week	40
<b>Section 7: Pedestrian and Pedalcyclist Crashes</b>	<b>41</b>
Pedestrians Killed and Injured By Age and Gender	42
Pedestrian Crashes by Geographic Location	42
Pedestrian Crash History	42
Pedestrians Killed by Age and Action	43
Pedestrians Injured by Age and Action	43
Pedestrian Physical Condition in Motor Vehicle Crashes	43
Lighting Conditions in Pedestrian Crashes	44
Weather Conditions in Pedestrian Crashes	44
Pedalcyclists Killed and Injured by Age and Gender	44
Pedalcycle Crashes by Geographic Location	45
Pedalcycle Crash History	45
Lighting Conditions in Pedalcyclist Crashes	45
Weather Conditions in Pedalcyclist Crashes	45
<b>Section 8: Motorcycle (MC) Crashes</b>	<b>46</b>
MC Fatalities by Year	47
MC Registrations in Arizona	47
Fatality Rate per Registered MC	47
Percent of MC Crashes to All Crashes	47
MC Crashes by First Harmful Event	48
Lighting Conditions in MC Crashes	48
Road Surface Conditions in MC Crashes	48
MC Crashes by Geographic Location	49
Operator Involvement by Age in MC Crashes	49
MC Operator Physical Condition	49
MC Operators Involved in Fatal Crashes by License Status	50
MC Operator's Helmet Use	50
MC Passenger's Helmet Use	50

## 2007 Arizona Crash Facts Summary

---

MC Operators and Passengers Killed and Injured.....	51
MC Operator Errors .....	51
All MC Crashes vs. Fatal MC Crashes by Time of Day - Weekdays.....	52
All MC Crashes vs. Fatal MC Crashes by Time of Day - Weekends.....	52
All MC Crashes vs. Fatal MC Crashes by Day of Week.....	53
Alcohol Related MC Crashes vs. Fatal Alcohol Related MC Crashes by Day of Week.....	53
MC Crashes by Hour and Day of Week.....	54
<b>Acknowledgements .....</b>	<b>55</b>



## 2007 Arizona Crash Facts Summary

### BREAKDOWN OF ALL CRASHES IN ARIZONA

TOTAL	140,371
FATAL	952
INJURY	43,304
PROPERTY DAMAGE ONLY	96,115
RURAL	25,517
URBAN	114,854
ALCOHOL RELATED	7,889
PEDESTRIAN	1,665
PEDALCYCLE	1,907
MOTORCYCLE	3,464
SINGLE VEHICLE	26,569
MULTI-VEHICLE	113,802

### BREAKDOWN OF FATAL CRASHES IN ARIZONA

TOTAL	952
ALCOHOL RELATED	356
URBAN	441
RURAL	511
SINGLE VEHICLE	555
MULTI-VEHICLE	397
ALCOHOL RELATED SINGLE VEHICLE	244
ALCOHOL RELATED MULTI-VEHICLE	112

### BREAKDOWN OF PERSONS KILLED AND INJURED

TYPE	KILLED	INJURED
IN ALL CRASHES	1,071	65,705
IN ALCOHOL RELATED CRASHES	396	5,496
IN URBAN CRASHES	479	52,501
IN RURAL CRASHES	592	13,204
USING SAFETY DEVICE	303	50,330
NOT USING SAFETY DEVICE	406	5,199
DRIVERS AGE 24 OR YOUNGER	151	11,128
DRINKING DRIVERS AGE 24 OR YOUNGER	69	1,102

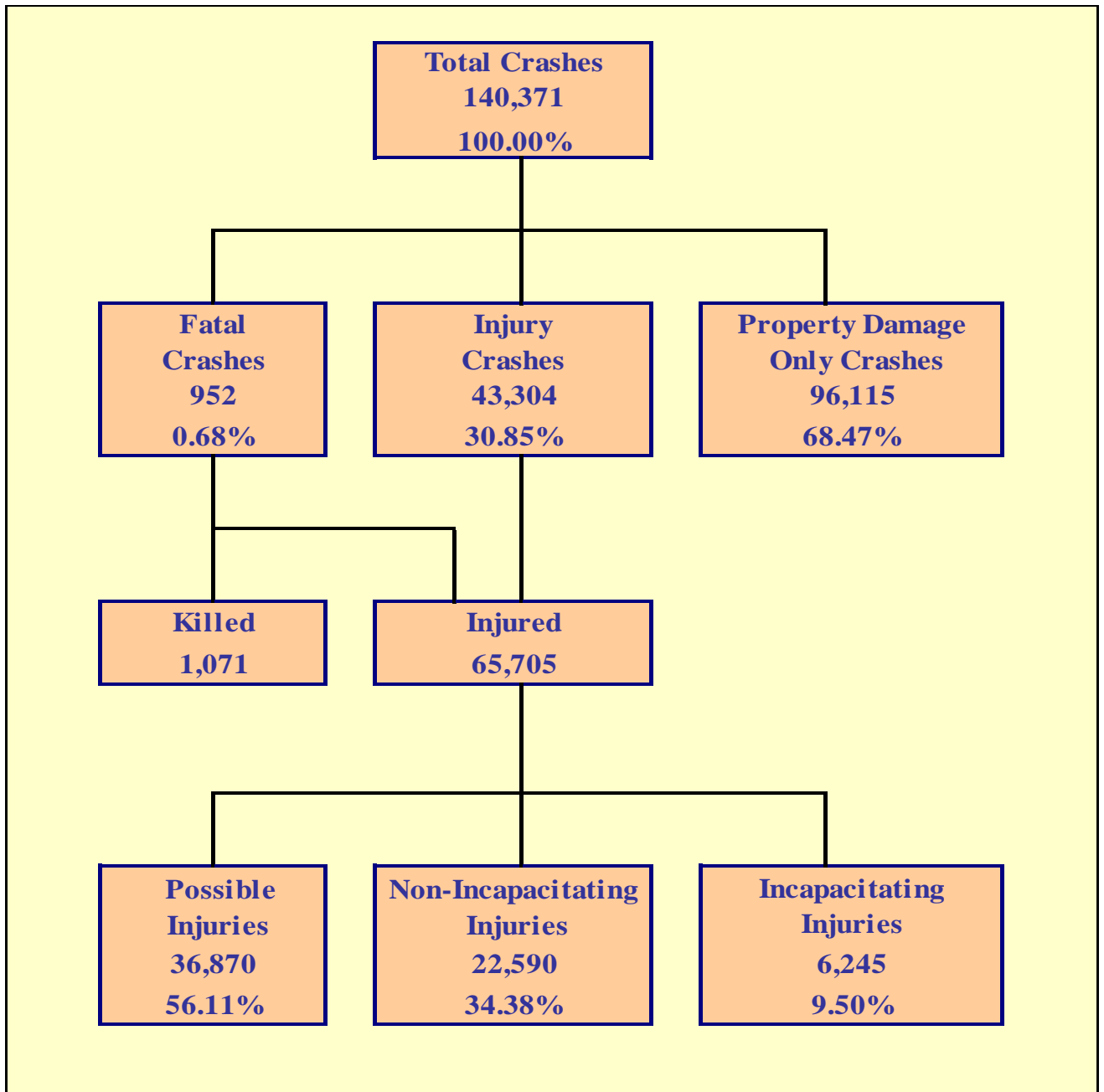
### BREAKDOWN OF CRASHES BY TIME

PEAK MONTH FOR ALL CRASHES	MARCH
PEAK DAY FOR ALL CRASHES	FRIDAY
PEAK HOUR FOR ALL CRASHES	4 PM - 5 PM
PEAK MONTH FOR FATAL CRASHES	APRIL
PEAK DAY FOR FATAL CRASHES	SATURDAY
PEAK HOUR FOR FATAL CRASHES	6 PM - 7 PM and 8 PM - 9 PM

### OTHER FACTS

MOST COMMON MANNER OF COLLISION	Rear-End
MOST COMMON MANNER OF COLLISION IN FATAL CRASHES	Angle
MOST COMMON FIRST HARMFUL EVENT (OTHER THAN COLLISION WITH OTHER MOTOR VEHICLE)	Fixed Object
MOST COMMON DRIVER VIOLATION	Speed too fast for conditions

**THIS PAGE LEFT BLANK FOR PRINTING PURPOSES**



## Section 1: – Highlights and Historical Trends

Table 1 - 1

### Arizona Crash Facts Summary and Comparison

Category	2006	2007	Percent Change
Total Crashes	142,729	140,371	-1.65%
Total Fatalities	1,299	1,071	-17.55%
Total Injuries	69,586	65,705	-5.58%
Alcohol Related Fatalities	381	396	3.94%
Alcohol Related Injuries	5,891	5,496	-6.71%
Urban Fatalities	574	479	-16.55%
Urban Injuries	56,398	52,501	-6.91%
Rural Fatalities	725	592	-18.34%
Rural Injuries	13,188	13,204	0.12%
MC Operator and Passenger Fatalities	155	135	-12.90%
MC Operator and Passenger Injuries	2,858	2,929	2.48%
Pedestrians Fatalities	172	157	-8.72%
Pedestrians Injuries	1,465	1,534	4.71%
Pedalcyclist Fatalities	29	21	-27.59%
Pedalcyclist Injuries	1,546	1,595	3.17%
Millions of vehicle miles traveled (VMT)	62,528	63,013	0.78%
Fatalities per 100 million VMT	2.08	1.70	-18.19%
Injuries per 100 million VMT	111.29	104.27	-6.30%

### Arizona at a Glance – 2007

- Approximately **2.93** persons were killed each day.
- One person was killed every **8.18** hours.
- There were **179.89** persons injured every day.
- One person was injured every **8.00** minutes.
- Alcohol Related crashes accounted for **5.62%** of all crashes and **37.39%** of all fatal crashes.
- Of all alcohol related crashes, **78.35%** occurred in Urban areas and **21.65%** occurred in Rural areas, while **47.47%** of all alcohol related fatal crashes occurred in Urban areas and **52.53%** occurred in Rural areas.
- Single vehicle crashes accounted for **18.93%** of all crashes and **58.30%** of all fatal crashes.
- Of all Pedestrian crashes, **9.01%** were fatal while **1.10%** of Pedalcycle crashes were fatal.
- Crashes which occurred during daylight hours (6:00 a.m. to 6:00 p.m.) accounted for **72.5%** of all crashes.
- Motor vehicle crashes resulted in **\$3.424** billion in economic losses to Arizona.
- Children age 14 and younger accounted for **49** fatalities and **5,426** injuries in motor vehicle crashes.

**The Nation In 2007**

The population of the United States was estimated at **301,621,157**.

Estimated vehicle miles traveled totaled **2.996 billion** miles.

An estimated **2,491,000** persons were injured.

An estimated **41,059** persons were killed in motor vehicle crashes in the United States.

Table 1 - 2

**Licensed Drivers, Motor Vehicle Registration  
and Crash History in Arizona**

Calendar Year	Total Crashes	Fatal Crashes	Injury Crashes	Property Damage Only Crashes	Total Persons Killed	Total Persons Injured	Total Licensed Drivers	Total Registered Vehicles
2003	131,170	974	45,276	84,920	1,121	72,081	3,819,823	4,193,262
2004	138,793	992	46,741	91,060	1,153	73,584	3,784,365	4,364,857
2005	140,414	1,045	45,759	93,610	1,188	70,944	3,963,005	4,556,448
2006	142,729	1,124	45,135	96,470	1,299	69,586	4,091,789	4,748,957
2007	140,371	952	43,304	96,115	1,071	65,705	4,212,393	4,848,162

Table 1 - 3

**Historical Trends – Arizona and the United States**

Calendar Year	U.S. Fatality Rate*	Arizona Fatality Rate*	Arizona Traffic Fatalities	Estimated Motor Vehicle Miles Traveled*	Arizona Fatal Crash Rate*
2003	1.48	2.10	1,121	53,345	1.83
2004	1.44	2.01	1,153	57,260	1.73
2005	1.46	2.02	1,188	58,796	1.78
2006	1.42	2.08	1,299	62,528	1.80
2007	1.37	1.70	1,071	63,013	1.51

Vehicle miles traveled are shown in million miles and rates per 100 million miles

\*Due to refinements in the method used for the calculation of vehicle miles traveled and the use of preliminary data in some cases, the Arizona crash and fatality rates may differ slightly from previous reports. The most current data is always used at the time of publication, but it may change as new information is received.

## Section 1: – Highlights and Historical Trends

### Statewide Economic Loss Due to Motor Vehicle Crashes

Fatalities	\$1,321,828,200
Incapacitating Injuries	\$398,118,750
Non-Incapacitating Injuries	\$467,748,540
Possible Injuries	\$432,485,100
Property Damage Only	\$803,905,860
<b>TOTAL</b>	<b>\$3,424,086,450</b>

Table 1 - 4

### Estimated Economic Loss by County

County	Cost of Traffic Crashes			
	Fatalities	Injuries	PDO	Total
Apache	\$ 64,178,400	\$ 10,054,956	\$ 3,387,420	\$ 77,620,776
Cochise	\$ 25,918,200	\$ 20,330,130	\$ 12,211,440	\$ 58,459,770
Coconino	\$ 69,115,200	\$ 38,185,230	\$ 26,329,872	\$ 133,630,302
Gila	\$ 30,855,000	\$ 14,068,350	\$ 7,385,412	\$ 52,308,762
Graham	\$ 8,639,400	\$ 4,499,118	\$ 2,099,364	\$ 15,237,882
Greenlee	\$ 2,468,400	\$ 1,056,618	\$ 401,472	\$ 3,926,490
La Paz	\$ 37,026,000	\$ 8,258,838	\$ 2,392,104	\$ 47,676,942
Maricopa	\$ 568,966,200	\$ 807,833,982	\$ 542,079,204	\$ 1,918,879,386
Mohave	\$ 64,178,400	\$ 46,029,948	\$ 19,362,660	\$ 129,571,008
Navajo	\$ 65,412,600	\$ 16,176,486	\$ 9,083,304	\$ 90,672,390
Pima	\$ 159,211,800	\$ 210,809,724	\$ 114,319,152	\$ 484,340,676
Pinal	\$ 106,141,200	\$ 44,523,612	\$ 20,884,908	\$ 171,549,720
Santa Cruz	\$ 9,873,600	\$ 5,789,826	\$ 4,064,904	\$ 19,728,330
Yavapai	\$ 72,817,800	\$ 40,351,812	\$ 22,649,712	\$ 135,819,324
Yuma	\$ 37,026,000	\$ 30,383,760	\$ 17,254,932	\$ 84,664,692
<b>TOTALS</b>	<b>\$ 1,321,828,200</b>	<b>\$ 1,298,352,390</b>	<b>\$ 803,905,860</b>	<b>\$ 3,424,086,450</b>

NOTE: Cost estimates are based on a 2% increase of the 2006 National Safety Council estimates of the average cost of motor vehicle crashes, deaths, and injuries. These costs are an estimate of wage and productivity losses, medical expenses, administrative expenses, motor vehicle damage, and employer costs. A description of the National Safety Council's current cost estimating procedures may be found in the Technical Appendix of *Injury Facts*<sup>®</sup>. Effective with the 1993 bulletin, the Council extensively revised its cost estimating procedures.

Table 1 - 5

### Average Economic Cost per Incident

1.	Fatality	\$1,234,200
2.	Incapacitating Injury	\$63,750
3.	Non-Incapacitating Injury	\$20,706
4.	Possible Injury	\$11,730
5.	Property Damage Only	\$8,364

Traffic Crashes in Arizona by Year

Chart 1 - 1  
Total Crashes

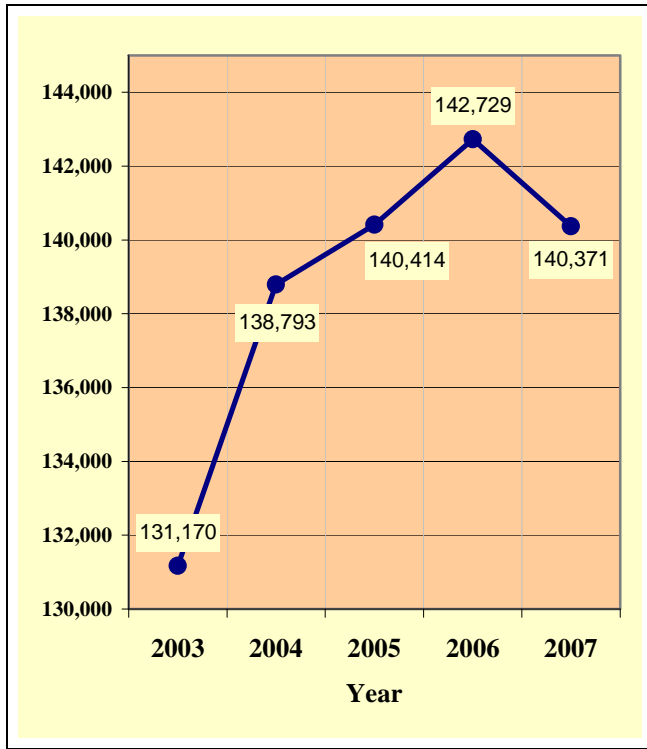


Chart 1 - 2  
Fatal Crashes

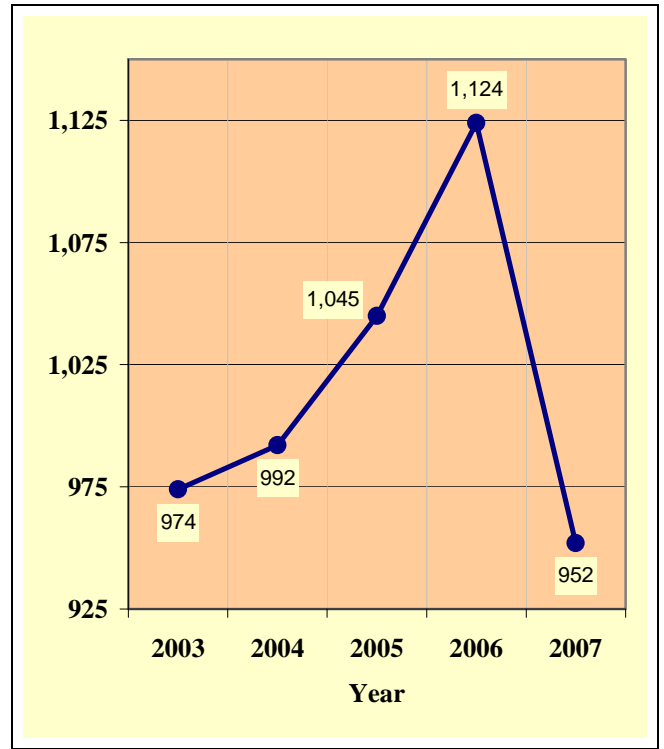


Chart 1 - 3  
Injury Crashes

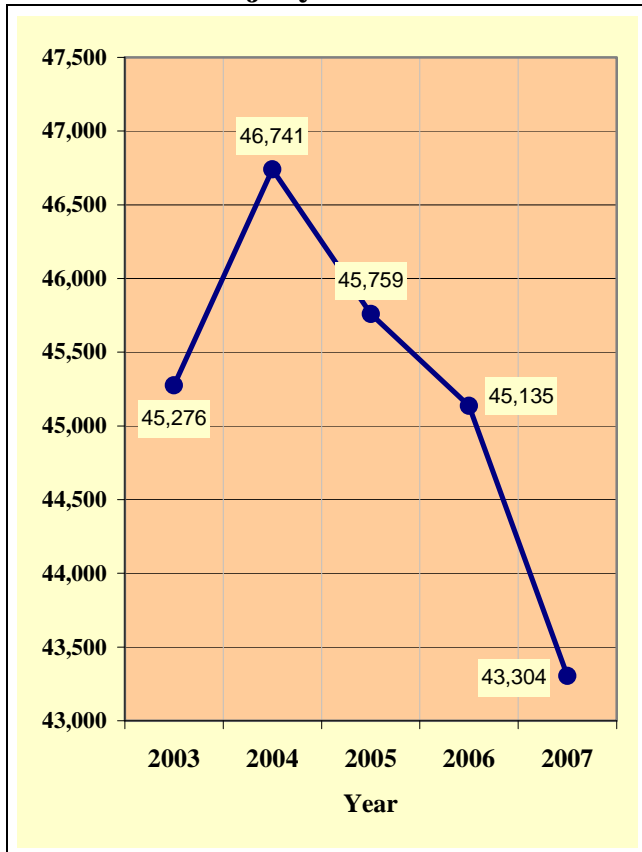
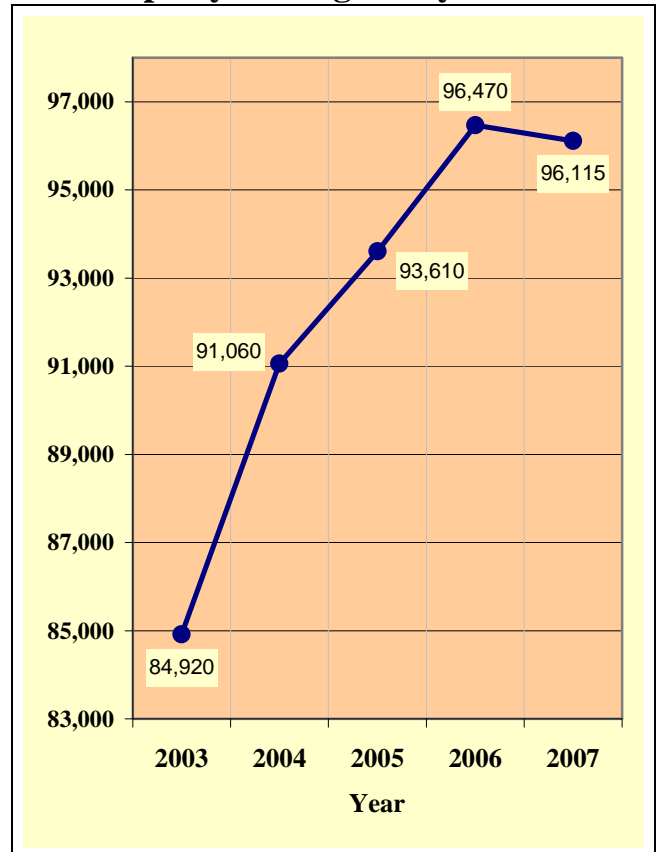


Chart 1 - 4  
Property Damage Only Crashes



## Section 1: – Highlights and Historical Trends

Table 1 - 6  
Victims of Motor Vehicle Crashes\*

Age of Victim	Persons Killed			Persons Injured			
	Total	Male	Female	Total	Male	Female	Gender Unknown
0-4	19	9	10	1,412	686	726	0
5-9	11	4	7	1,792	874	918	0
10-14	19	14	5	2,222	1,102	1,117	3
15-19	125	87	38	8,514	3,987	4,526	1
20-24	140	115	25	9,058	4,652	4,405	1
25-34	191	137	54	12,309	6,029	6,278	2
35-44	169	108	61	9,984	4,858	5,125	1
45-54	141	103	38	8,739	4,089	4,649	1
55-64	107	70	37	5,738	2,649	3,089	0
65-74	65	35	30	2,720	1,259	1,461	0
75 & Older	83	48	35	2,023	891	1,132	0
Not Stated	1	1	0	1,194	616	528	50
<b>TOTAL</b>	<b>1,071</b>	<b>731</b>	<b>340</b>	<b>65,705</b>	<b>31,692</b>	<b>33,954</b>	<b>59</b>

\*Includes all reported injuries and fatalities occurring on Arizona roadways

Table 1 - 7  
Arizona's 2007 Estimated Population

Race/Ethnic group	Population Percentage	Traffic Crash Fatality Percentage	Population Estimate**
White non-Hispanic	60.21%	51.07%	3,872,764
Hispanic or Latino	27.96%	28.83%	1,798,222
Black or African American	3.94%	3.11%	253,477
American Indian or Alaska Native	5.25%	15.34%	337,764
Asian or Pacific Islander	2.64%	1.55%	169,780
Ethnicity Unknown	N/A	0.10%	N/A
<b>TOTAL</b>	<b>100.00%</b>	<b>100.00%</b>	<b>6,432,007</b>

Source: Arizona Department of Health Services, Health Status and Vital Statistics Section.  
\*\* Population estimates for 2007 are available at <http://www.azdhs.gov/plan/menu/info/pop/pop07/pd07.htm>

Table 1 - 8  
Victims of Motor Vehicle Crashes (Arizona Residents Only)\*\*\*

Age of Victim	Total Killed	Male	Female	Detail Breakdown:					
				White non-Hispanic	Hispanic or Latino	Black or African American	American Indian or Alaska Native	Asian or Pacific Islander	Ethnicity Unknown
Less Than 1	0	0	0	0	0	0	0	0	0
1-14	54	31	23	18	27	3	6	0	0
15-19	119	81	38	51	43	3	22	0	0
20-44	474	342	132	192	165	16	91	9	1
45-64	237	167	70	154	45	7	27	4	0
65 or older	146	86	60	111	17	3	12	3	0
<b>TOTAL</b>	<b>1,030</b>	<b>707</b>	<b>323</b>	<b>526</b>	<b>297</b>	<b>32</b>	<b>158</b>	<b>16</b>	<b>1</b>

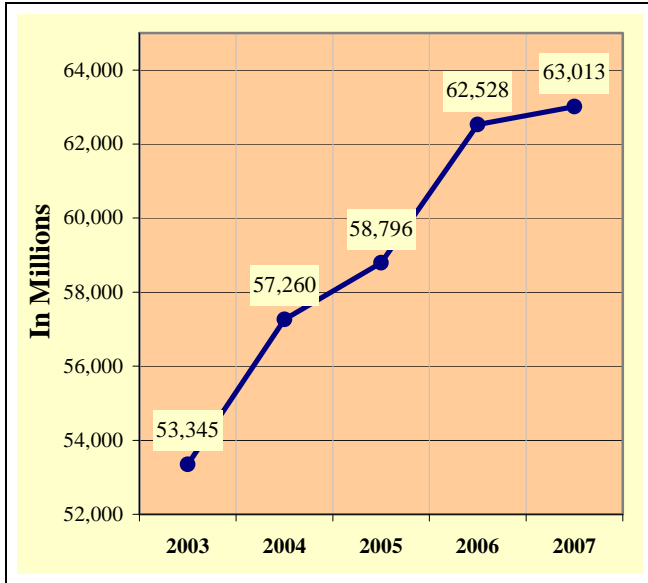
Source: Arizona Department of Health Services, Health Status and Vital Statistics Section.  
\*\*\*Includes victims of crashes occurring outside Arizona.



Section 1: – Highlights and Historical Trends

Chart 1 - 5

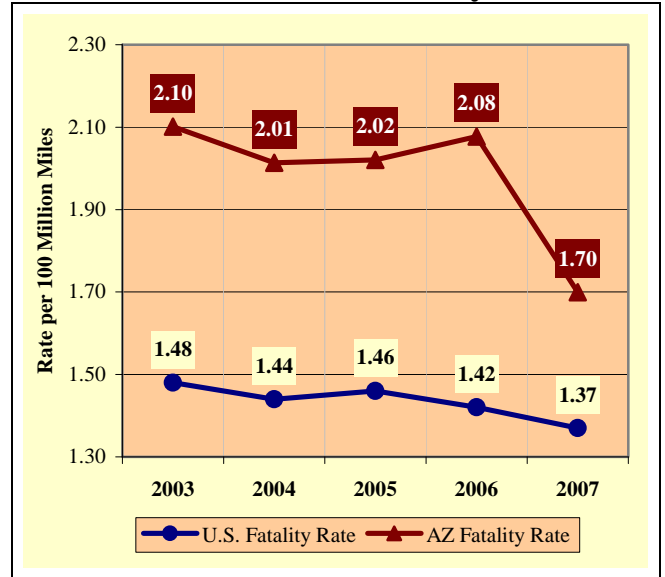
Vehicle Miles Traveled



Source: ADOT – Multimodal Planning Division – Data Bureau

Chart 1 - 6

Arizona vs. U.S. Fatality Rate



Source for U.S. Fatality Rate: www.nhtsa.gov

Chart 1 - 7

Traffic Fatalities by Geographic Region

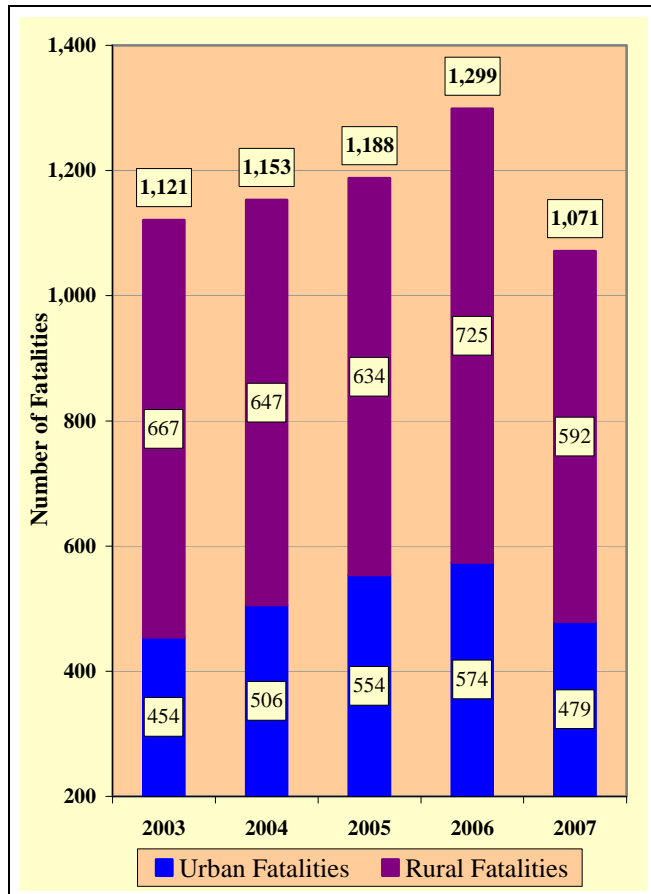
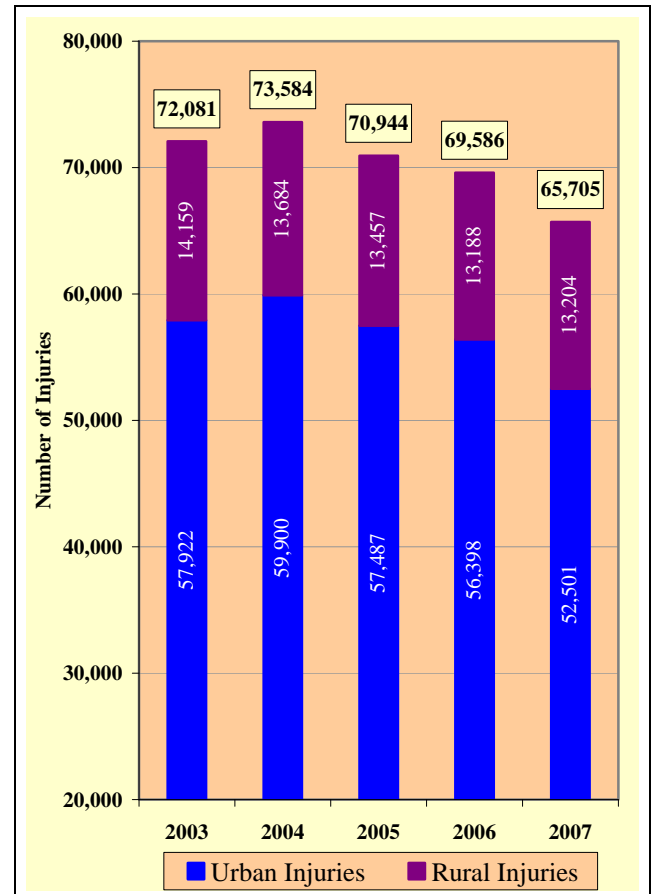


Chart 1 - 8

Traffic Injuries by Geographic Region



## Section 1: – Highlights and Historical Trends

Table 1 - 9

### Holiday Crash Statistics

Holidays such as Memorial Day, Labor Day, and Thanksgiving are regarded as three or four day weekend holidays for statistical purposes. Holidays such as Christmas, New Year's Day, and the Fourth of July are celebrated on specific dates; which make the holiday period range from two to five days in length.

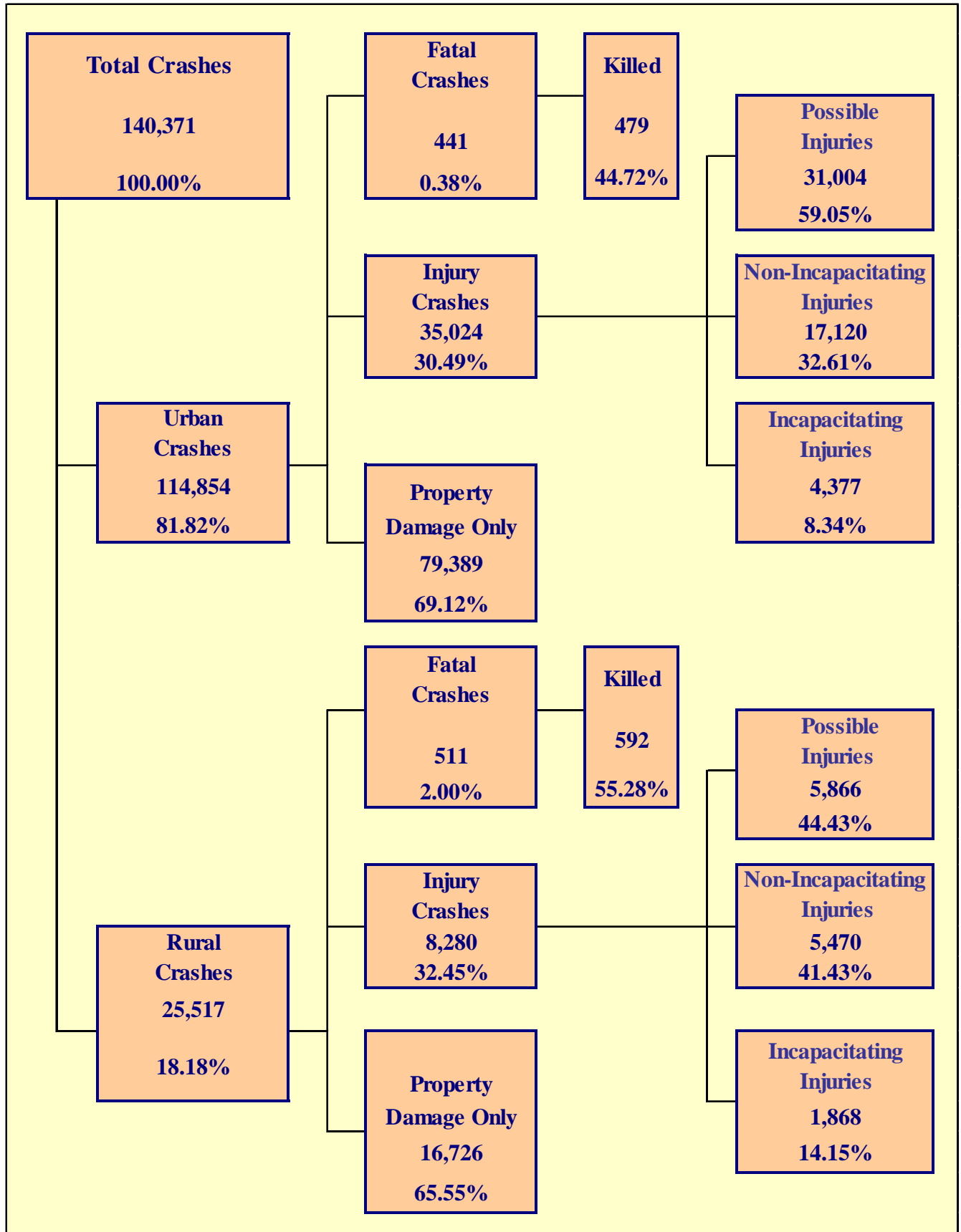
Holiday fatality statistics are based on fatal crashes occurring from 6:00 p.m. on the last working day prior to the holiday through 5:59 a.m. the day following the holiday period. Example: Thanksgiving fatalities are counted from Wednesday evening at 6:00 p.m. through 5:59 a.m. of the following Monday.

2007 Holidays	Beginning at 6:00 p.m.	Ending at 5:59 a.m.	Number of Days	Fatal Crashes	Persons Killed	Alcohol Related Fatal Crashes	Alcohol Related Fatalities
New Year's Day	Friday	Tuesday	4	9	9	3	3
	12/29/2006	1/2/2007					
Memorial Day	Friday	Tuesday	4	7	7	5	5
	5/25/2007	5/29/2007					
July 4th	Tuesday	Thursday	2	1	1	0	0
	7/3/2007	7/5/2007					
Labor Day	Friday	Tuesday	4	9	10	4	4
	8/31/2007	9/4/2007					
Thanksgiving Day	Wednesday	Monday	5	14	16	7	8
	11/21/2007	11/26/2007					
Christmas Day	Friday	Wednesday	5	9	12	6	6
	12/21/2007	12/26/2007					

Fatal Crashes by Year	New Year's Day	Memorial Day	July 4th	Labor Day	Thanksgiving	Christmas Day	Total
2003	3	10	19	8	22	13	75
2004	15	14	11	10	17	12	79
2005	18	12	18	5	19	6	78
2006	26	12	5	17	13	13	86
2007	9	7	1	9	14	9	49

Persons Killed	New Year's Day	Memorial Day	July 4th	Labor Day	Thanksgiving	Christmas Day	Total
2003	3	12	24	8	25	14	86
2004	18	14	16	14	18	15	95
2005	23	14	20	8	23	6	94
2006	28	13	5	24	15	13	98
2007	9	7	1	10	16	12	55

Number of Days	New Year's Day	Memorial Day	July 4th	Labor Day	Thanksgiving	Christmas Day	Total
2003	2	4	4	4	5	5	24
2004	5	4	4	4	5	4	26
2005	4	4	4	4	5	4	25
2006	4	4	2	4	5	4	23
2007	4	4	2	4	5	5	24



## Section 2: – Geographic Location

*Fatal Crashes in Arizona (952) accounted for 0.68% of all crashes, Injury Crashes (43,304) accounted for 30.85%, and Property Damage Only (PDO) Crashes (96,115) accounted for 68.47%.*

Table 2 - 1

### Crash Severity by First Harmful Event Statewide

FHE Type	Number of Crashes				Number of Persons	
	Total	Fatal	Injury	PDO	Killed	Injured
Overturning	3,573	233	2,016	1,324	270	3,361
Collision with other Motor Vehicle	107,797	357	32,248	75,192	419	51,553
Collision with Pedestrian	1,665	150	1,406	109	151	1,522
Collision with Pedalcyclist	1,907	21	1,595	291	21	1,644
Collision with MV on other Rdway	48	10	14	24	14	43
Animal	1,677	5	197	1,475	5	268
Fixed Object	15,044	147	4,249	10,648	161	5,515
Object in Roadway	113	0	20	93	0	23
Other*	4,654	12	468	4,174	13	558
Miscellaneous**	3,893	17	1,091	2,785	17	1,218
<b>TOTAL</b>	<b>140,371</b>	<b>952</b>	<b>43,304</b>	<b>96,115</b>	<b>1,071</b>	<b>65,705</b>
*Includes Collision with Parked Vehicles, Trains, Machinery, and Unknown Objects						
**Includes Collision with Special Devices, Objects dropped from vehicles, Non-fixed Objects, as well as Vehicle Fires						

Table 2 - 2

### Crashes by County

County	Number of Crashes				Number of Persons	
	Total	Fatal	Injury	PDO	Killed	Injured
Apache	687	46	236	405	52	426
Cochise	2,078	18	600	1,460	21	931
Coconino	4,277	44	1,085	3,148	56	1,635
Gila	1,289	21	385	883	25	569
Graham	399	7	141	251	7	235
Greenlee	79	2	29	48	2	37
La Paz	461	24	151	286	30	281
Maricopa	93,734	422	28,501	64,811	461	42,993
Mohave	3,517	45	1,157	2,315	52	1,812
Navajo	1,574	45	443	1,086	53	721
Pima	20,767	115	6,984	13,668	129	10,572
Pinal	3,755	73	1,185	2,497	86	1,890
Santa Cruz	663	8	169	486	8	273
Yavapai	3,974	55	1,211	2,708	59	1,796
Yuma	3,117	27	1,027	2,063	30	1,534
<b>TOTAL</b>	<b>140,371</b>	<b>952</b>	<b>43,304</b>	<b>96,115</b>	<b>1,071</b>	<b>65,705</b>

Table 2 - 3

**Crash Severity by First Harmful Event in Urban Areas**

FHE Type	Number of Crashes				Number of Persons	
	Total	Fatal	Injury	PDO	Killed	Injured
Overturning	901	38	524	339	38	792
Collision with other Motor Vehicle	94,007	204	27,923	65,880	231	44,126
Collision with Pedestrian	1,522	102	1,319	101	103	1,425
Collision with Pedalcyclist	1,738	13	1,461	264	13	1,503
Collision with MV on other Rdway	24	5	6	13	7	24
Animal	187	0	15	172	0	16
Fixed Object	10,228	70	2,700	7,458	77	3,418
Object in Roadway	34	0	7	27	0	8
Other*	4,109	3	403	3,703	4	471
Miscellaneous**	2,104	6	666	1,432	6	718
<b>TOTAL</b>	<b>114,854</b>	<b>441</b>	<b>35,024</b>	<b>79,389</b>	<b>479</b>	<b>52,501</b>
*Includes Collision with Parked Vehicles, Trains, Machinery, and Unknown Objects						
**Includes Collision with Special Devices, Objects dropped from vehicles, Non-fixed Objects, as well as Vehicle Fires						

Table 2 - 4

**Crash Severity by First Harmful Event in Rural Areas**

FHE Type	Number of Crashes				Number of Persons	
	Total	Fatal	Injury	PDO	Killed	Injured
Overturning	2,672	195	1,492	985	232	2,569
Collision with other Motor Vehicle	13,790	153	4,325	9,312	188	7,427
Collision with Pedestrian	143	48	87	8	48	97
Collision with Pedalcyclist	169	8	134	27	8	141
Collision with MV on other Rdway	24	5	8	11	7	19
Animal	1,490	5	182	1,303	5	252
Fixed Object	4,816	77	1,549	3,190	84	2,097
Object in Roadway	79	0	13	66	0	15
Other*	545	9	65	471	9	87
Miscellaneous**	1,789	11	425	1,353	11	500
<b>TOTAL</b>	<b>25,517</b>	<b>511</b>	<b>8,280</b>	<b>16,726</b>	<b>592</b>	<b>13,204</b>
*Includes Collision with Parked Vehicles, Trains, Machinery, and Unknown Objects						
**Includes Collision with Special Devices, Objects dropped from vehicles, Non-fixed Objects, as well as Vehicle Fires						

*While Urban Crashes in Arizona (114,854) accounted for 81.82% of all crashes, they accounted for 46.32% of all Fatal Crashes (441) occurring in 2007.*

*While Rural Crashes in Arizona (25,517) accounted for 18.18% of all crashes, they accounted for 53.68% of all Fatal Crashes (511) occurring in 2007.*

## Section 2: – Geographic Location

Table 2 - 5

### Analysis by Jurisdiction

COUNTIES Cities	Number of Crashes				No. of Persons		Alcohol Related		
	Total	Fatal	Injury	PDO	Killed	Injured	Crashes	Killed	Injured
Apache County	109	19	39	51	23	71	28	12	20
Apache County State Rural Roads	484	27	166	291	29	305	42	10	36
Eagar	54	0	19	35	0	32	2	0	0
St. Johns	16	0	6	10	0	9	3	0	2
Springerville	24	0	6	18	0	9	2	0	0
<b>TOTAL</b>	<b>687</b>	<b>46</b>	<b>236</b>	<b>405</b>	<b>52</b>	<b>426</b>	<b>77</b>	<b>22</b>	<b>58</b>

Cochise County	244	5	81	158	6	118	21	3	13
Cochise County State Rural Roads	602	9	184	409	11	312	23	0	24
Benson	90	1	23	66	1	34	4	0	3
Bisbee	29	2	10	17	2	21	2	1	2
Douglas	176	0	27	149	0	37	5	0	1
Huachuca City	12	0	5	7	0	5	40	1	29
Sierra Vista	889	1	256	632	1	385	1	0	0
Willcox	36	0	14	22	0	19	0	0	0
<b>TOTAL</b>	<b>2,078</b>	<b>18</b>	<b>600</b>	<b>1,460</b>	<b>21</b>	<b>931</b>	<b>96</b>	<b>5</b>	<b>72</b>

Coconino County	222	6	78	138	6	127	24	5	24
Coconino Co. State Rural Roads	1,322	30	401	891	38	668	59	7	45
Flagstaff	2,345	3	512	1,830	3	697	123	0	66
Fredonia	4	0	2	2	0	7	1	0	0
Williams	114	4	19	91	8	28	6	6	2
Page	6	1	1	4	1	3	0	0	0
Sedona	264	0	72	192	0	105	13	0	12
<b>TOTAL</b>	<b>4,277</b>	<b>44</b>	<b>1,085</b>	<b>3,148</b>	<b>56</b>	<b>1,635</b>	<b>226</b>	<b>18</b>	<b>149</b>

Gila County	166	4	61	101	4	81	21	0	17
Gila County State Rural Roads	597	15	189	393	19	295	31	5	37
Globe	255	2	59	194	2	88	19	1	9
Hayden	5	0	0	5	0	0	0	0	0
Miami	33	0	10	23	0	10	0	0	0
Payson	227	0	63	164	0	92	11	0	9
Winkelman	6	0	3	3	0	3	0	0	0
<b>TOTAL</b>	<b>1,289</b>	<b>21</b>	<b>385</b>	<b>883</b>	<b>25</b>	<b>569</b>	<b>82</b>	<b>6</b>	<b>72</b>

Graham County	73	2	27	44	2	47	8	1	11
Graham County State Rural Roads	104	5	39	60	5	73	14	0	19
Pima	21	0	9	12	0	15	3	0	1
Safford	124	0	40	84	0	62	7	0	2
Thatcher	77	0	26	51	0	38	7	0	4
<b>TOTAL</b>	<b>399</b>	<b>7</b>	<b>141</b>	<b>251</b>	<b>7</b>	<b>235</b>	<b>39</b>	<b>1</b>	<b>37</b>

Greenlee County	3	0	1	2	0	1	1	0	1
Greenlee Co. State Rural Roads	69	2	26	41	2	33	8	1	5
Clifton	3	0	1	2	0	2	0	0	0
Duncan	4	0	1	3	0	1	1	0	1
<b>TOTAL</b>	<b>79</b>	<b>2</b>	<b>29</b>	<b>48</b>	<b>2</b>	<b>37</b>	<b>10</b>	<b>1</b>	<b>7</b>

Table 2 - 5

**Analysis by Jurisdiction**

COUNTIES Cities	Number of Crashes				No. of Persons		Alcohol Related		
	Total	Fatal	Injury	PDO	Killed	Injured	Crashes	Killed	Injured
La Paz County	32	6	7	19	6	14	7	1	4
La Paz County State Rural Roads	311	14	120	177	20	228	14	4	7
Parker	62	1	10	51	1	15	1	0	0
Quartzite	56	3	14	39	3	24	4	0	5
<b>TOTAL</b>	<b>461</b>	<b>24</b>	<b>151</b>	<b>286</b>	<b>30</b>	<b>281</b>	<b>26</b>	<b>5</b>	<b>16</b>

Maricopa County	3,735	55	1,268	2,412	59	1,943	228	24	180
Maricopa Co. State Rural Roads	2,936	36	976	1,924	38	1,579	147	6	112
Avondale	1,490	11	348	1,131	13	533	73	5	41
Buckeye	249	6	84	159	6	142	8	1	4
Cave Creek	79	1	20	58	1	23	8	0	5
Chandler	4,685	8	1,303	3,374	11	1,931	279	3	160
El Mirage	426	4	118	304	4	171	37	2	24
Gila Bend	45	1	15	29	1	25	1	1	0
Gilbert	2,514	6	703	1,805	8	1,009	108	1	54
Glendale	6,074	18	1,797	4,259	19	2,724	280	6	237
Goodyear	1,103	6	276	821	7	443	52	0	42
Mesa	9,394	33	2,768	6,593	34	4,009	517	3	321
Paradise Valley	282	2	75	205	2	109	14	0	12
Peoria	2,864	15	761	2,088	16	1,104	129	8	75
Phoenix	42,212	179	13,352	28,681	193	20,482	2,264	94	1,542
Scottsdale	4,557	15	1,431	3,111	20	2,048	328	4	226
Surprise	1,147	9	361	777	9	622	55	2	50
Tempe	8,450	10	2,455	5,985	12	3,534	444	6	284
Tolleson	608	3	168	437	4	257	30	0	19
Wickenburg	85	1	24	60	1	30	2	0	1
Youngtown	8	0	2	6	0	6	1	0	0
Guadalupe	380	0	88	292	0	129	22	0	14
Litchfield Park	72	1	22	49	1	30	6	0	4
Queen Creek	138	2	32	104	2	44	5	2	2
Fountain Hills	170	0	41	129	0	51	13	0	5
Carefree	31	0	13	18	0	15	4	0	2
<b>TOTAL</b>	<b>93,734</b>	<b>422</b>	<b>28,501</b>	<b>64,811</b>	<b>461</b>	<b>42,993</b>	<b>5,055</b>	<b>168</b>	<b>3,416</b>

Mohave County	496	11	157	328	11	234	50	7	33
Mohave County State Rural Roads	950	25	366	559	30	669	81	5	77
Kingman	604	2	206	396	4	306	33	1	20
Lake Havasu City	685	4	198	483	4	272	83	3	46
Bullhead City	768	3	226	539	3	322	59	3	36
Colorado City	14	0	4	10	0	9	1	0	0
<b>TOTAL</b>	<b>3,517</b>	<b>45</b>	<b>1,157</b>	<b>2,315</b>	<b>52</b>	<b>1,812</b>	<b>307</b>	<b>19</b>	<b>212</b>

## Section 2: – Geographic Location

Table 2 - 5

### Analysis by Jurisdiction

COUNTIES Cities	Number of Crashes				No. of Persons		Alcohol Related		
	Total	Fatal	Injury	PDO	Killed	Injured	Crashes	Killed	Injured
Navajo County	186	10	62	114	12	103	26	6	26
Navajo County State Rural Roads	545	26	181	338	31	311	57	18	62
Holbrook	102	4	21	77	5	37	17	5	10
Show Low	263	2	77	184	2	115	19	1	9
Snowflake	66	0	13	53	0	22	7	0	7
Taylor	49	1	13	35	1	16	4	1	2
Winslow	192	1	39	152	1	54	26	1	14
Pinetop-Lakeside	171	1	37	133	1	63	11	1	8
<b>TOTAL</b>	<b>1,574</b>	<b>45</b>	<b>443</b>	<b>1,086</b>	<b>53</b>	<b>721</b>	<b>167</b>	<b>33</b>	<b>138</b>

Pima County	4,237	31	1,382	2,824	35	2,064	309	16	240
Pima County State Rural Roads	1,176	19	378	779	24	610	53	11	53
South Tucson	196	1	58	137	1	86	9	0	3
Tucson	13,546	55	4,744	8,747	57	7,196	630	20	493
Sahuarita	198	3	63	132	3	92	9	0	4
Oro Valley	413	1	112	300	1	158	14	0	7
Marana	1,001	5	247	749	8	366	23	1	10
<b>TOTAL</b>	<b>20,767</b>	<b>115</b>	<b>6,984</b>	<b>13,668</b>	<b>129</b>	<b>10,572</b>	<b>1,047</b>	<b>48</b>	<b>810</b>

Pinal County	257	27	75	155	32	156	45	18	40
Pinal County State Rural Roads	1,338	33	451	854	40	746	74	14	79
Casa Grande	1,125	5	334	786	6	525	45	2	34
Coolidge	207	0	60	147	0	85	16	0	9
Eloy	197	4	54	139	4	74	15	2	10
Florence	80	0	21	59	0	29	3	0	2
Kearny	1	0	0	1	0	0	0	0	0
Mammoth	2	0	1	1	0	1	0	0	0
Superior	25	1	4	20	1	4	1	0	0
Apache Junction	523	3	185	335	3	270	36	3	22
<b>TOTAL</b>	<b>3,755</b>	<b>73</b>	<b>1,185</b>	<b>2,497</b>	<b>86</b>	<b>1,890</b>	<b>235</b>	<b>39</b>	<b>196</b>

Santa Cruz County	9	2	2	5	2	3	1	1	1
Santa Cruz Co. State Rural Roads	232	5	78	149	5	146	11	2	5
Nogales	422	1	89	332	1	124	10	0	7
<b>TOTAL</b>	<b>663</b>	<b>8</b>	<b>169</b>	<b>486</b>	<b>8</b>	<b>273</b>	<b>22</b>	<b>3</b>	<b>13</b>

Yavapai County	471	13	169	289	14	237	69	9	46
Yavapai County State Rural Roads	1,304	33	400	871	36	629	73	7	56
Clarkdale	4	0	1	3	0	2	0	0	0
Cottonwood	345	1	99	245	1	146	18	0	6
Prescott	969	4	308	657	4	405	70	1	38
Prescott Valley	613	2	146	465	2	219	48	0	22
Chino Valley	137	1	39	97	1	72	9	0	3
Camp Verde	131	1	49	81	1	86	12	1	5
<b>TOTAL</b>	<b>3,974</b>	<b>55</b>	<b>1,211</b>	<b>2,708</b>	<b>59</b>	<b>1,796</b>	<b>299</b>	<b>18</b>	<b>176</b>



Table 2 - 5

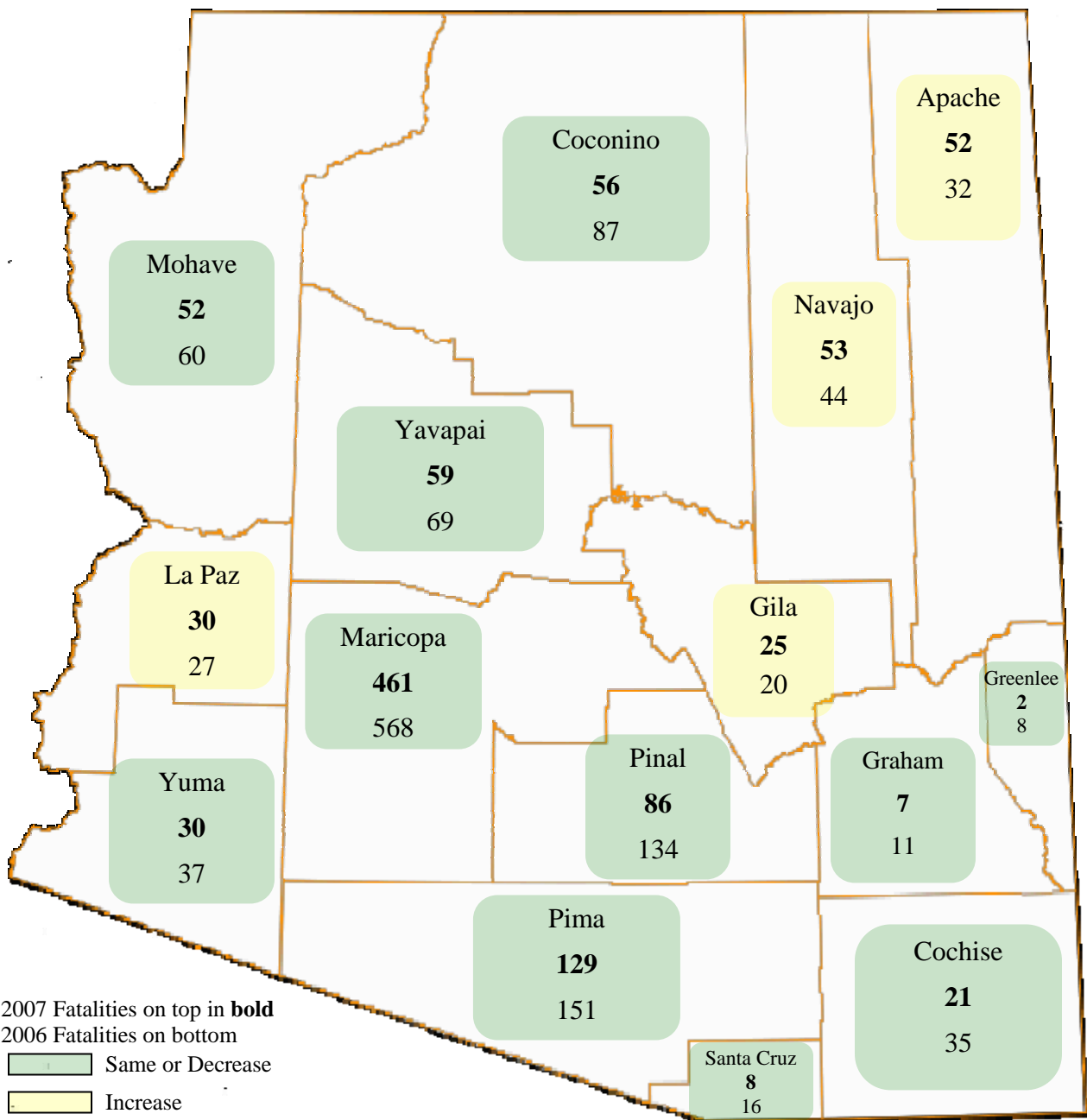
Analysis by Jurisdiction

COUNTIES Cities	Number of Crashes				No. of Persons		Alcohol Related		
	Total	Fatal	Injury	PDO	Killed	Injured	Crashes	Killed	Injured
Yuma County	621	5	183	433	6	299	47	4	29
Yuma County State Rural Roads	346	9	106	231	10	156	19	2	13
Somerton	15	1	2	12	1	9	3	0	1
Yuma	2,126	10	733	1,383	10	1,063	131	2	81
Wellton	6	1	2	3	2	2	1	2	0
San Luis	3	1	1	1	1	5	0	0	0
<b>TOTAL</b>	<b>3,117</b>	<b>27</b>	<b>1,027</b>	<b>2,063</b>	<b>30</b>	<b>1,534</b>	<b>201</b>	<b>10</b>	<b>124</b>

Some individual city data may be incomplete due to lack of timely reporting.

Totals within city and town jurisdictions include all state highways.

Total Fatalities by County for 2006 and 2007



## Section 2: – Geographic Location

Chart 2 - 1

Urban and Rural Crashes by Day of Week

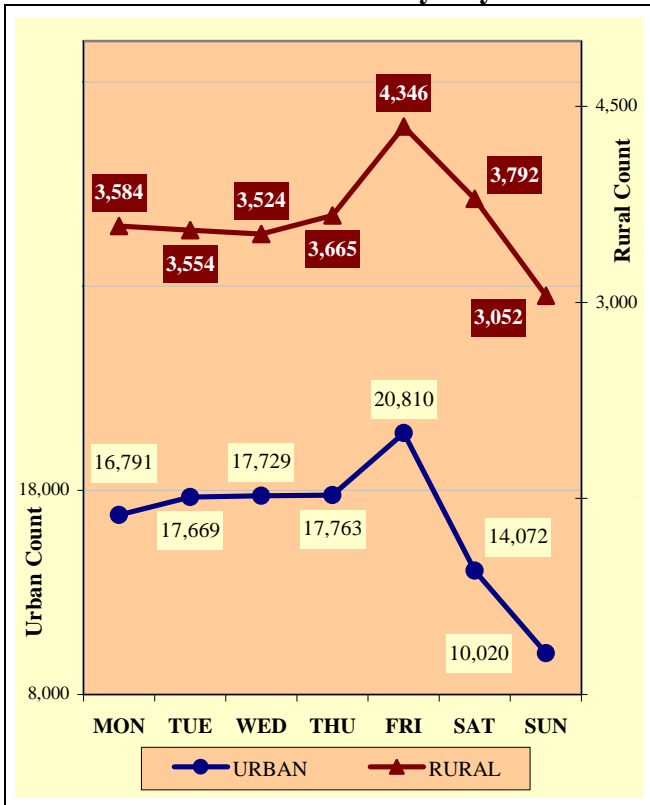


Chart 2 - 2

Urban and Rural Fatal Crashes by Day of Week

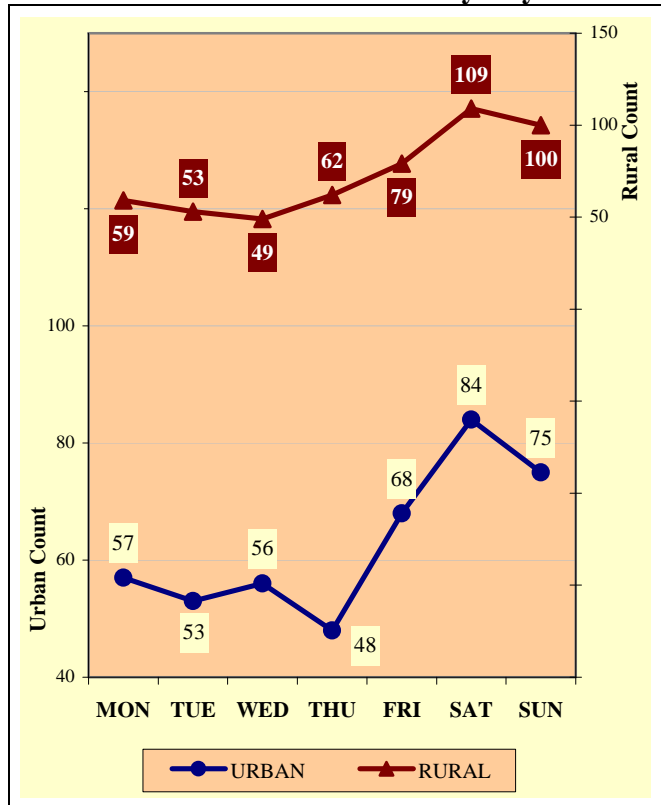
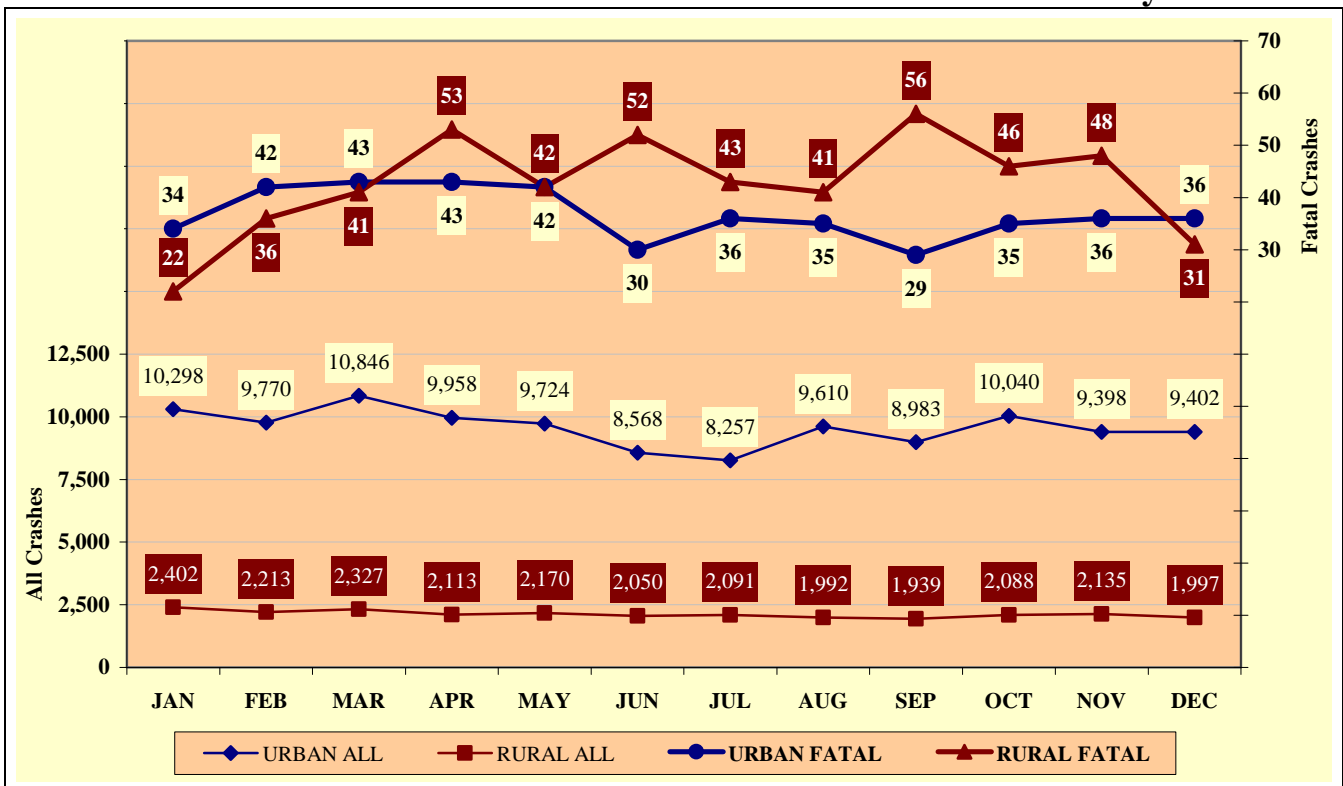
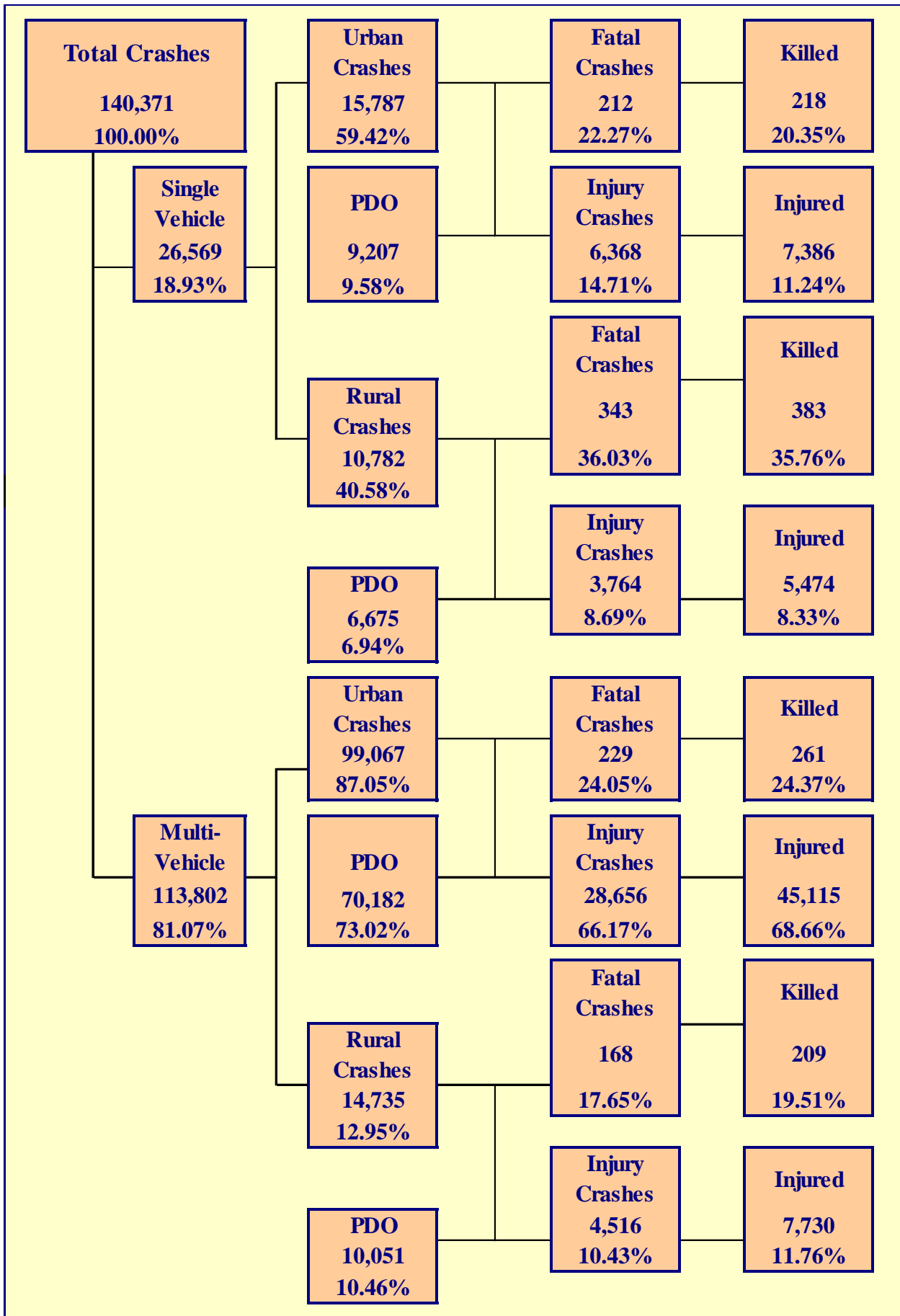


Chart 2 - 3

All Urban and Rural Crashes vs. Urban and Rural Fatal Crashes by Month





## Section 3: – Crash Descriptions

Table 3 - 1

### Manner of Collision in Multi-Vehicle Crashes

Manner of Collision Type	Number of Crashes							
	Total	Percent of All Crashes	Fatal	Percent of Fatal Crashes	Injury	Percent of Injury Crashes	PDO	Percent of PDO Crashes
Sideswipe (same)	16,910	14.86%	30	7.56%	2,181	6.57%	14,699	18.32%
Sideswipe (opposite)	1,451	1.28%	8	2.02%	372	1.12%	1,071	1.33%
Angle	22,285	19.58%	91	22.92%	7,745	23.35%	14,449	18.01%
Left Turn	13,071	11.49%	59	14.86%	5,788	17.45%	7,224	9.00%
Rear-End	50,824	44.66%	64	16.12%	15,276	46.05%	35,484	44.23%
Head-On	1,069	0.94%	90	22.67%	457	1.38%	522	0.65%
Backing	3,266	2.87%	0	0.00%	149	0.45%	3,117	3.88%
Other	2,452	2.15%	41	10.33%	560	1.69%	1,851	2.31%
Non-Contact (mc)	63	0.06%	1	0.25%	51	0.15%	11	0.01%
Non-Contact (not mc)	660	0.58%	4	1.01%	122	0.37%	534	0.67%
U-Turn	1,751	1.54%	9	2.27%	471	1.42%	1,271	1.58%
<b>TOTAL</b>	<b>113,802</b>	<b>100%</b>	<b>397</b>	<b>100%</b>	<b>33,172</b>	<b>100%</b>	<b>80,233</b>	<b>100%</b>

Table 3 - 2

### Unusual Road Conditions

Type of Unusual Road Condition	Incident Counts				Person Counts	
	Total	Fatal	Injury	PDO	Killed	Injured
No Unusual Conditions	133,480	903	41,377	91,200	1,020	62,727
Under Construction, Traffic Allowed	4,557	16	1,220	3,321	17	1,891
Under Construction, Traffic Detoured	139	1	37	101	1	47
Under Repairs	100	2	34	64	3	54
Holes, Ruts, Bumps	405	15	164	226	15	266
Obstruction (protected)	32	0	6	26	0	9
Obstruction (unprotected)	148	4	40	104	4	67
Obstruction (unlighted at night)	144	5	37	102	5	53
Defective Shoulders	63	0	14	49	0	21
Changing Roadwidth	358	3	106	249	3	164
Flooded	525	2	149	374	2	219
Temporary Lane Closure	420	1	120	299	1	187
<b>TOTAL</b>	<b>140,371</b>	<b>952</b>	<b>43,304</b>	<b>96,115</b>	<b>1,071</b>	<b>65,705</b>

Table 3 - 3

### Lighting Conditions

Type of Lighting Conditions	Incident Counts				Person Counts	
	Total	Fatal	Injury	PDO	Killed	Injured
Daylight	100,327	418	30,873	69,036	479	46,460
Dawn or Dusk	7,407	65	2,231	5,111	70	3,418
Darkness	32,150	448	10,097	21,605	500	15,683
Not Reported	487	21	103	363	22	144
<b>TOTAL</b>	<b>140,371</b>	<b>952</b>	<b>43,304</b>	<b>96,115</b>	<b>1,071</b>	<b>65,705</b>

Table 3 - 4

**Weather Conditions**

Type of Conditions	Incident Counts				Person Counts	
	Total	Fatal	Injury	PDO	Killed	Injured
Clear	122,140	788	37,826	83,526	898	57,318
Cloudy	10,990	84	3,523	7,383	87	5,400
Sleet/Hail	148	1	31	116	1	63
Rain	5,091	23	1,393	3,675	27	2,070
Snow	861	3	190	668	4	319
Severe Crosswinds	158	5	58	95	5	90
Blowing Sand, Soil, Dirt, Snow	178	2	64	112	2	122
Fog, Smog, Smoke	77	0	23	54	0	30
Not Reported	728	46	196	486	47	293
<b>TOTAL</b>	<b>140,371</b>	<b>952</b>	<b>43,304</b>	<b>96,115</b>	<b>1,071</b>	<b>65,705</b>

Table 3 - 5

**Road Surface Type**

Type of Surface	Incident Counts				Person Counts	
	Total	Fatal	Injury	PDO	Killed	Injured
Asphalt	134,493	851	41,449	92,193	963	62,921
Concrete	3,533	16	1,140	2,377	18	1,662
Gravel	310	4	89	217	4	141
Dirt	1,107	37	367	703	40	604
Other	85	1	25	59	1	27
Not Reported	843	43	234	566	45	350
<b>TOTAL</b>	<b>140,371</b>	<b>952</b>	<b>43,304</b>	<b>96,115</b>	<b>1,071</b>	<b>65,705</b>

Table 3 - 6

**Road Surface Conditions**

Type of Road Surface Condition	Incident Counts				Person Counts	
	Total	Fatal	Injury	PDO	Killed	Injured
Dry	128,996	839	40,160	87,997	949	60,989
Wet	7,150	36	1,999	5,115	40	2,951
Not Reported, No Unusual Condition	1,884	50	521	1,313	54	785
Sand, Mud, Dirt, Oil or Gravel	645	16	244	385	16	377
Snow	560	1	118	441	2	190
Slush	138	1	33	104	1	65
Ice	658	2	150	506	2	239
Other	91	1	40	50	1	54
Unknown	249	6	39	204	6	55
<b>TOTAL</b>	<b>140,371</b>	<b>952</b>	<b>43,304</b>	<b>96,115</b>	<b>1,071</b>	<b>65,705</b>

Table 3 - 7

**Road Grade**

Type of Grade	Incident Counts				Person Counts	
	Total	Fatal	Injury	PDO	Killed	Injured
Level	127,152	730	39,127	87,295	820	59,351
Downgrade	6,635	100	2,199	4,336	115	3,396
Upgrade	4,811	56	1,421	3,334	61	2,115
Hillcrest	389	5	141	243	5	225
Dip	184	4	67	113	4	99
Not Reported	1,200	57	349	794	66	519
<b>TOTAL</b>	<b>140,371</b>	<b>952</b>	<b>43,304</b>	<b>96,115</b>	<b>1,071</b>	<b>65,705</b>

Section 3: – Crash Descriptions

Chart 3 - 1

All Crashes vs. Fatal Crashes by Time of Day - Weekdays

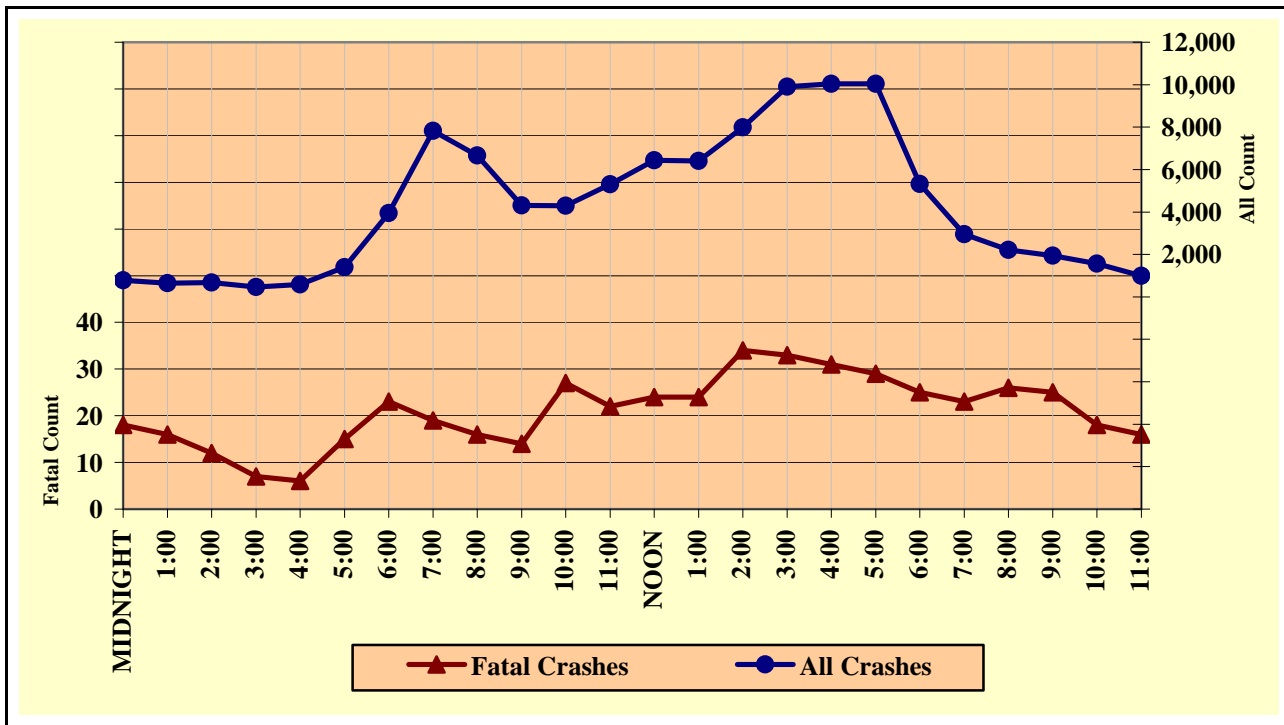


Chart 3 - 2

All Crashes vs. Fatal Crashes by Time of Day - Weekends

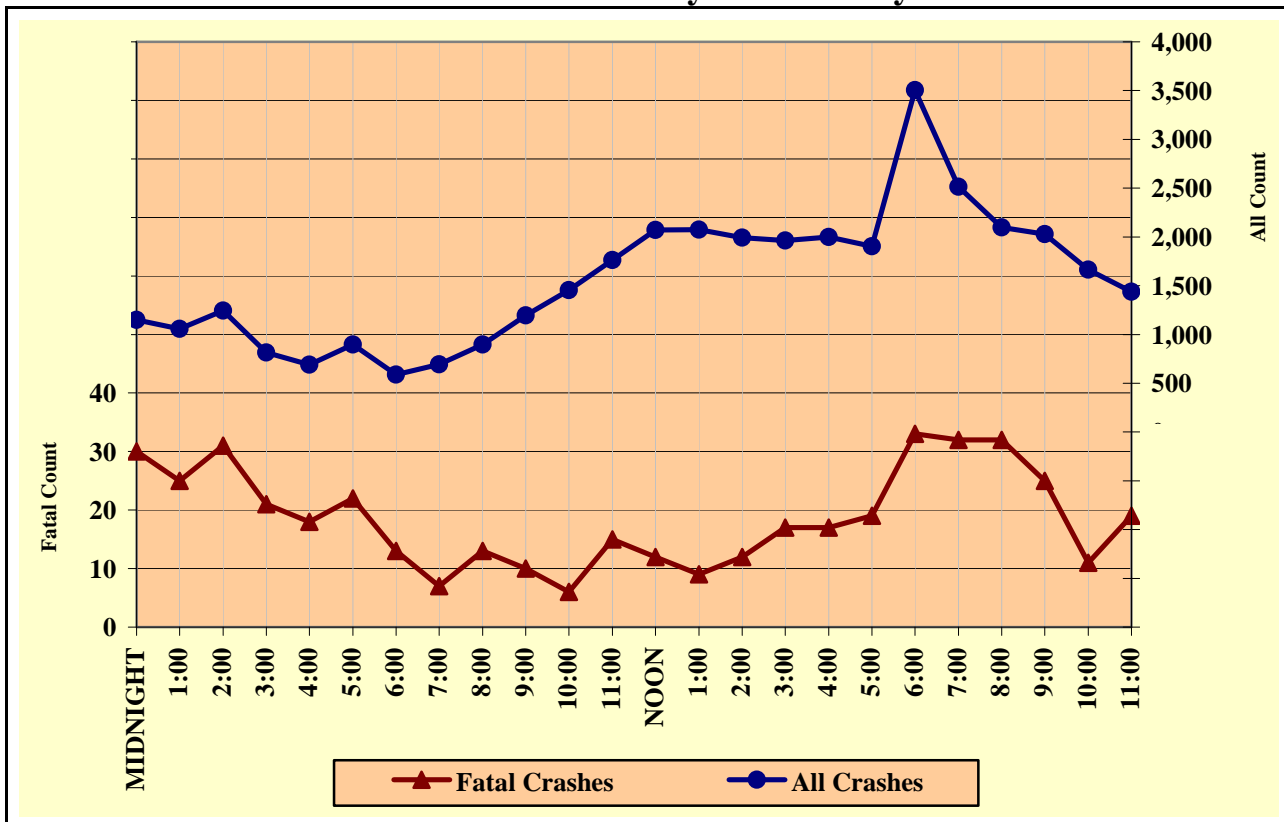


Chart 3 - 3

Crashes by Day of Week

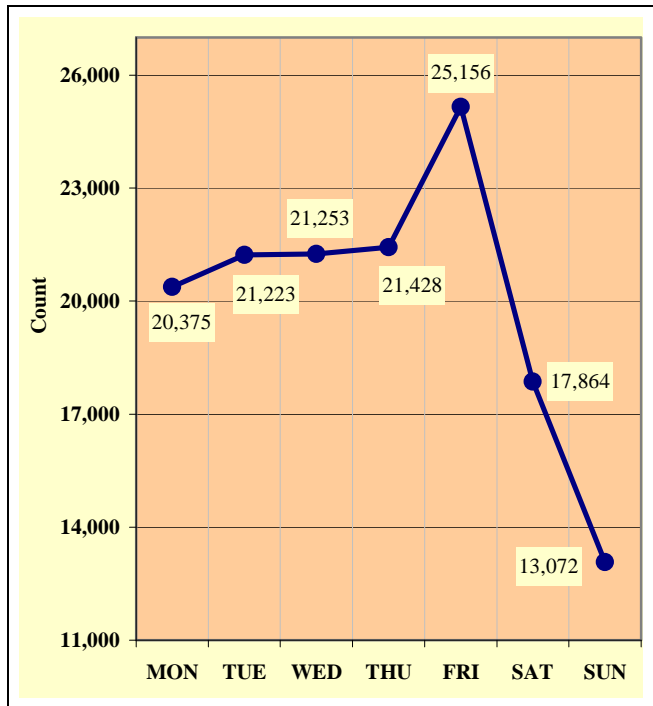


Chart 3 - 4

Fatal Crashes by Day of Week

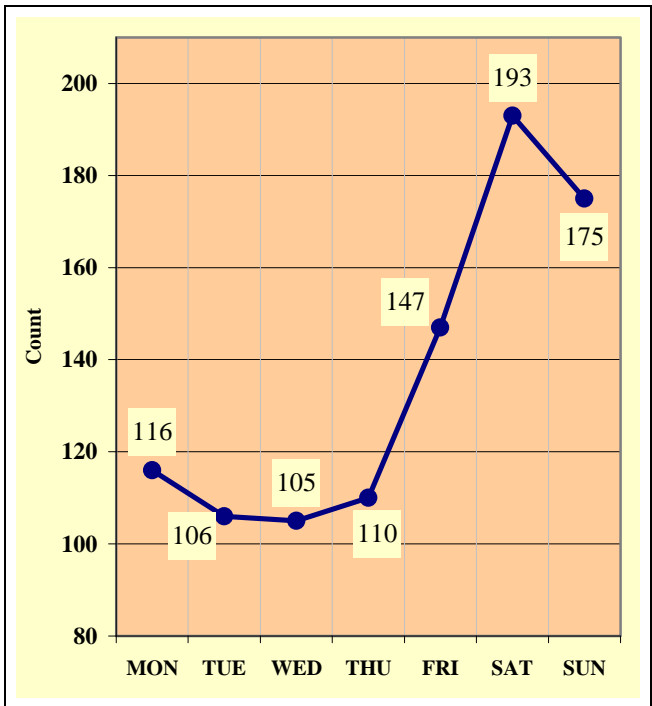
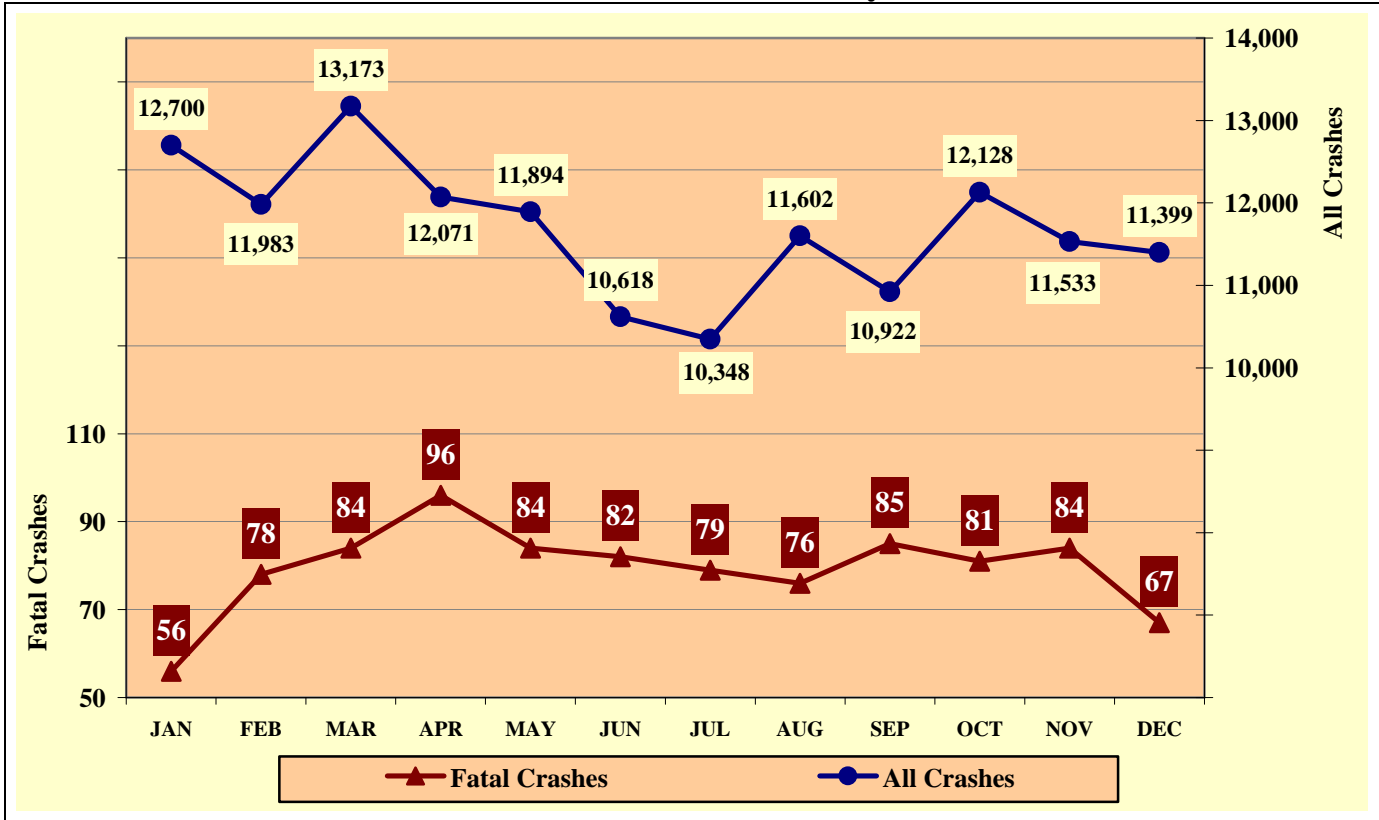


Chart 3 - 5

All Crashes vs. Fatal Crashes by Month



## Section 3: – Crash Descriptions

Table 3 - 8

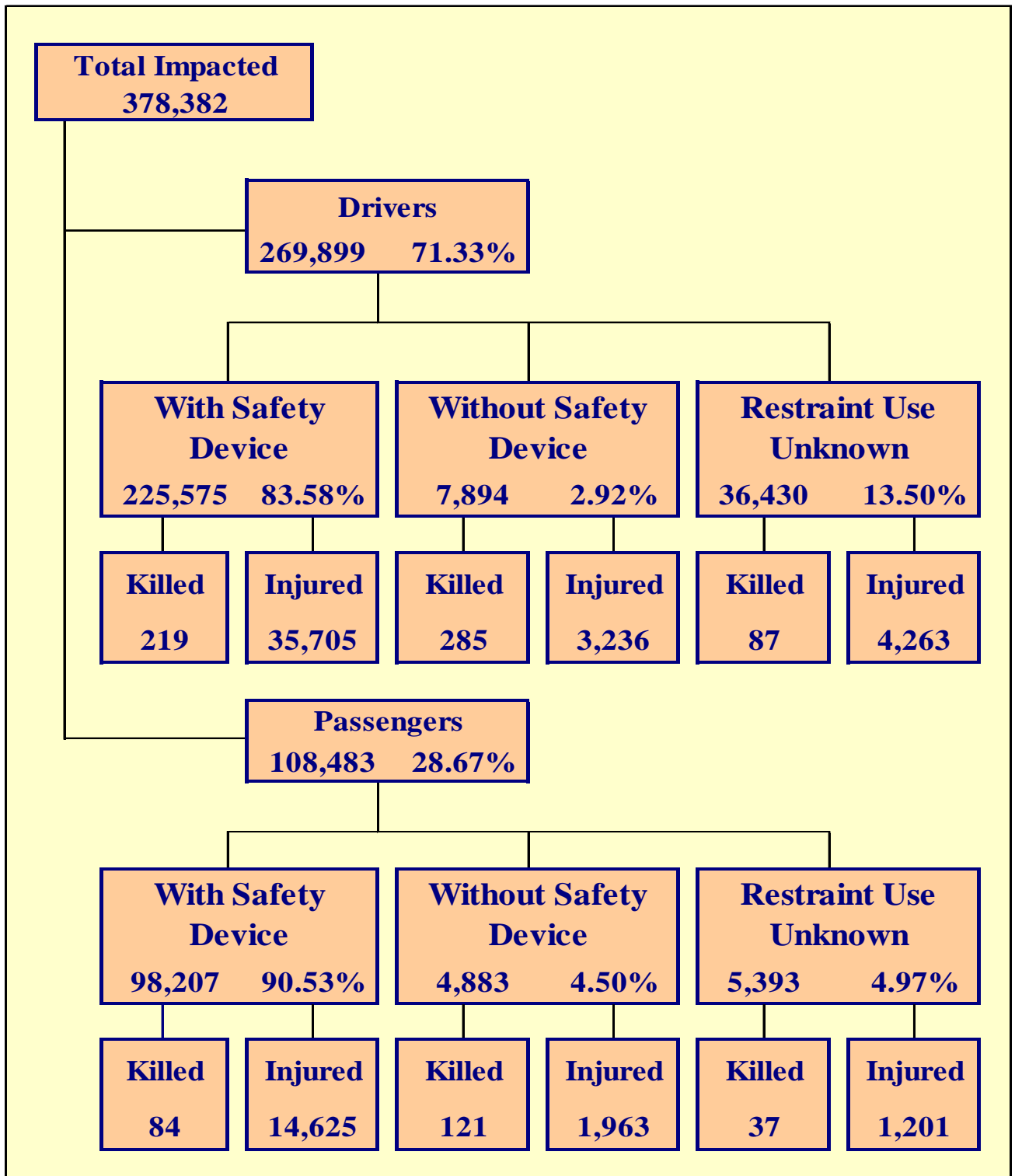
### Crashes by Hour and Day of Week

Hour Beginning	Total Crashes		Monday		Tuesday		Wednesday		Thursday		Friday		Saturday		Sunday		Weekdays		Weekends	
	All	Fatal	All	Fatal	All	Fatal	All	Fatal	All	Fatal	All	Fatal	All	Fatal	All	Fatal	All	Fatal	All	Fatal
<b>MIDNIGHT</b>	1,924	48	222	3	141	4	177	4	212	5	245	5	456	15	471	12	775	18	1,149	30
<b>1:00</b>	1,704	41	181	1	130	4	151	2	154	4	212	6	464	9	412	15	647	16	1,057	25
<b>2:00</b>	1,917	43	179	8	140	1	139	1	174	4	220	6	535	15	530	8	673	12	1,244	31
<b>3:00</b>	1,274	28	133	5	98	4	92	1	107	0	161	2	330	9	353	7	458	7	816	21
<b>4:00</b>	1,282	24	181	4	152	1	142	2	132	3	165	0	242	8	268	6	591	6	691	18
<b>5:00</b>	2,294	37	368	4	347	4	352	5	355	0	344	6	281	7	247	11	1,398	15	896	22
<b>6:00</b>	4,537	36	778	3	836	4	842	3	796	7	698	6	358	6	229	7	3,950	23	587	13
<b>7:00</b>	8,509	26	1,494	4	1,715	6	1,665	3	1,524	3	1,419	3	435	7	257	0	7,817	19	692	7
<b>8:00</b>	7,561	29	1,236	5	1,441	2	1,399	2	1,361	3	1,228	4	582	9	314	4	6,665	16	896	13
<b>9:00</b>	5,499	24	839	1	918	3	847	5	793	4	906	1	739	3	457	7	4,303	14	1,196	10
<b>10:00</b>	5,752	33	820	4	831	4	854	4	859	7	934	8	877	2	577	4	4,298	27	1,454	6
<b>11:00</b>	7,067	37	1,015	8	1,029	1	1,002	5	1,002	3	1,256	5	1,076	6	687	9	5,304	22	1,763	15
<b>NOON</b>	8,514	36	1,216	2	1,225	4	1,272	5	1,200	9	1,530	4	1,256	5	815	7	6,443	24	2,071	12
<b>1:00</b>	8,479	33	1,197	5	1,183	5	1,281	6	1,220	3	1,525	5	1,257	4	816	5	6,406	24	2,073	9
<b>2:00</b>	9,982	46	1,515	5	1,463	7	1,500	5	1,527	7	1,985	10	1,167	8	825	4	7,990	34	1,992	12
<b>3:00</b>	11,862	50	1,883	9	1,947	6	1,834	3	1,928	9	2,307	6	1,137	7	826	10	9,899	33	1,963	17
<b>4:00</b>	12,043	48	1,894	6	1,957	9	1,885	2	1,951	6	2,357	8	1,155	6	844	11	10,044	31	1,999	17
<b>5:00</b>	11,944	48	1,852	5	1,947	5	1,934	8	2,130	5	2,177	6	1,097	12	807	7	10,040	29	1,904	19
<b>6:00</b>	8,820	58	1,137	11	1,392	7	1,408	4	1,379	3	1,582	13	1,046	10	876	10	5,316	25	3,504	33
<b>7:00</b>	5,465	55	691	3	683	4	762	10	814	6	1,034	9	786	10	695	13	2,950	23	2,515	32
<b>8:00</b>	4,308	58	537	5	549	8	571	7	554	6	803	15	675	14	619	3	2,211	26	2,097	32
<b>9:00</b>	3,975	50	410	7	492	8	508	7	538	3	816	7	719	7	492	11	1,948	25	2,027	25
<b>10:00</b>	3,230	29	363	4	382	3	388	5	433	6	684	5	620	5	360	1	1,566	18	1,664	11
<b>11:00</b>	2,429	35	234	4	225	2	248	6	285	4	568	7	574	9	295	3	992	16	1,437	19
<b>TOTAL</b>	<b>140,371</b>	<b>952</b>	<b>20,375</b>	<b>116</b>	<b>21,223</b>	<b>106</b>	<b>21,253</b>	<b>105</b>	<b>21,428</b>	<b>110</b>	<b>25,156</b>	<b>147</b>	<b>17,864</b>	<b>193</b>	<b>13,072</b>	<b>175</b>	<b>102,684</b>	<b>503</b>	<b>37,687</b>	<b>449</b>

*Crashes during Weekends accounted for 26.85% of all crashes and 47.16% of Fatal Crashes.*

*Crashes during Weekdays accounted for 73.15% of all crashes and 52.84% of Fatal Crashes.*





## Section 4: – Safety Devices

**Arizona law requires young children to be restrained when riding in a motor vehicle.**

A.R.S. Title 28-907 states "...a person shall not operate a motor vehicle on the highways in this state when transporting a child who is under five years of age unless that child is properly secured in a child passenger restraint system."

Table 4 - 1

### Child Restraint Usage (less than five years old)

Severity of Injury	Restraint Used	Percent of Restraint Used	No Restraint Used	Percent of No Restraint	Not Reported	Percent of Unknown
No Injury	11,923	89.93%	265	68.12%	338	74.12%
Unknown Injury	150	1.13%	2	0.51%	43	9.43%
Possible Injury	836	6.31%	46	11.83%	52	11.40%
Non-Incapacitating Injury	292	2.20%	45	11.57%	19	4.17%
Incapacitating Injury	47	0.35%	27	6.94%	2	0.44%
Fatal Injury	10	0.08%	4	1.03%	2	0.44%
<b>TOTALS</b>	<b>13,258</b>	<b>100.00%</b>	<b>389</b>	<b>100.00%</b>	<b>456</b>	<b>100.00%</b>

*The most dangerous place for a child to travel in a car is in your lap.*

This is often called the "child crusher position." In a crash of approximately 30 mph, a 10 pound infant will be ripped from a belted adult's arms with a force of almost 200 pounds. If the adult is unbelted, the child is likely to be crushed between the adult's body and the dashboard.

**Wearing a seat belt isn't just a good idea; in Arizona, it's the law.**

Table 4 - 2

### Driver Restraint Usage

Severity of Injury	Restraint Used	Percent of Restraint Used	No Restraint Used	Percent of No Restraint	Not Reported	Percent of Unknown
No Injury	187,199	82.99%	3,793	48.05%	13,253	36.38%
Unknown Injury	2,452	1.09%	580	7.35%	18,827	51.68%
Possible Injury	21,881	9.70%	910	11.53%	1,806	4.96%
Non-Incapacitating Injury	11,433	5.07%	1,518	19.23%	1,765	4.84%
Incapacitating Injury	2,391	1.06%	808	10.24%	692	1.90%
Fatal Injury	219	0.10%	285	3.61%	87	0.24%
<b>TOTALS</b>	<b>225,575</b>	<b>100.00%</b>	<b>7,894</b>	<b>100.00%</b>	<b>36,430</b>	<b>100.00%</b>

Table 4 - 3

**Front-Seat Passenger Restraint Usage**

Severity of Injury	Restraint Used	Percent of Restraint Used	No Restraint Used	Percent of No Restraint	Not Reported	Percent of Unknown
No Injury	45,615	81.99%	1,172	51.09%	2,137	66.93%
Unknown Injury	359	0.65%	24	1.05%	239	7.49%
Possible Injury	5,981	10.75%	345	15.04%	339	10.62%
Non-Incapacitating Injury	3,001	5.39%	469	20.44%	325	10.18%
Incapacitating Injury	620	1.11%	217	9.46%	128	4.01%
Fatal Injury	59	0.11%	67	2.92%	25	0.78%
<b>TOTALS</b>	<b>55,635</b>	<b>100.00%</b>	<b>2,294</b>	<b>100.00%</b>	<b>3,193</b>	<b>100.00%</b>

**Safety belts used in conjunction with airbags are the most effective protection in vehicle crashes.**

*Source: www.nsc.org*

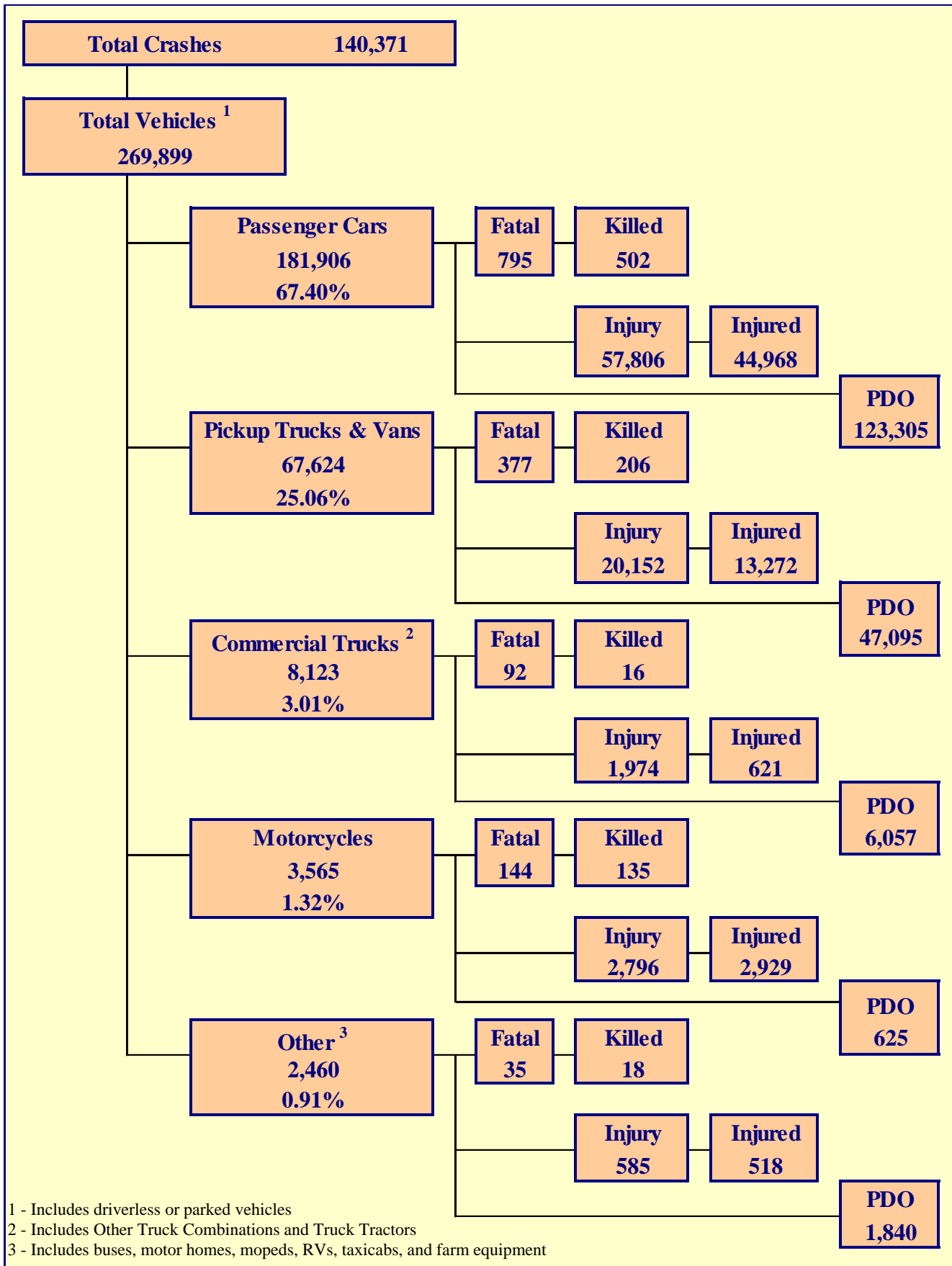
Table 4 - 4

**Rear-Seat Passenger Restraint Usage**

Severity of Injury	Restraint Used	Percent of Restraint Used	No Restraint Used	Percent of No Restraint	Not Reported	Percent of Unknown
No Injury	25,241	86.11%	1,320	60.00%	1,312	75.23%
Unknown Injury	210	0.72%	16	0.73%	86	4.93%
Possible Injury	2,450	8.36%	316	14.36%	176	10.09%
Non-Incapacitating Injury	1,197	4.08%	352	16.00%	105	6.02%
Incapacitating Injury	201	0.69%	146	6.64%	55	3.15%
Fatal Injury	15	0.05%	50	2.27%	10	0.57%
<b>TOTALS</b>	<b>29,314</b>	<b>100.00%</b>	<b>2,200</b>	<b>100.00%</b>	<b>1,744</b>	<b>100.00%</b>

# Section 5

# Motor Vehicle and Driver Descriptions



## Section 5: – Motor Vehicle and Driver Descriptions

Table 5 - 1

### Arizona Motor Vehicle Registrations

Privately Owned Vehicles	4,229,350
Commercial Vehicles	473,013
Buses and Taxis	3,947
Motorcycles	141,458
Mopeds	394
<b>TOTAL</b>	<b>4,848,162</b>
Source: MVD - MV988 MV630419, Currently Registered Vehicles by County Listing, dated 12/31/2007.	

Table 5 - 2

### Motor Vehicle Crash Involvement by Vehicle Type

Motor Vehicle Type	Vehicle Counts				
	Total	Percent	Fatal	Injury	PDO
Passenger Car (Includes cars with trailer)	181,906	67.398%	795	57,806	123,305
Pickup Truck and Vans	67,546	25.026%	375	20,129	47,042
Pickup Truck With Camper	78	0.029%	2	23	53
Other Vehicle With Camper	15	0.006%	0	4	11
Truck Tractor Only	210	0.078%	1	44	165
Truck Tractor and Semi-Trailer	4,323	1.602%	60	959	3,304
Other Truck Combination	3,590	1.330%	31	971	2,588
Farm Tractor and/or Farm Equipment	39	0.014%	2	7	30
Taxicab	25	0.009%	0	7	18
Commercial Bus	244	0.090%	4	41	199
Non-Commercial Bus	743	0.275%	2	177	564
School Bus	540	0.200%	3	101	436
Motorcycle (two or three wheel)	3,565	1.321%	144	2,796	625
Motorscooter or Motor Bicycle (Includes ATV)	50	0.019%	12	36	2
Moped	8	0.003%	0	4	4
Recreational Vehicle	52	0.019%	1	21	30
Motor Home or House Car	272	0.101%	7	44	221
Vehicle With Special Controls (Dual, Etc.)	1	0.000%	0	0	1
Emergency Vehicle (Includes Privately Owned)	149	0.055%	0	37	112
Military	0	0.000%	0	0	0
Other Types Of Vehicles	322	0.119%	4	106	212
Vehicle Type Not Reported	6,221	2.305%	34	1,033	5,154
<b>TOTAL</b>	<b>269,899</b>	<b>100.00%</b>	<b>1,477</b>	<b>84,346</b>	<b>184,076</b>

Section 5: – Motor Vehicle and Driver Descriptions

Table 5 - 3

**Hit and Run Drivers Involved in Crashes**

Hit and Run	Incident Counts				Person Counts	
	Total	Fatal	Injury	PDO	Killed	Injured
Yes	17,295	67	3,354	13,874	69	4,456
No	123,076	885	39,950	82,241	1,002	61,249
<b>TOTAL</b>	<b>140,371</b>	<b>952</b>	<b>43,304</b>	<b>96,115</b>	<b>1,071</b>	<b>65,705</b>

Table 5 - 4

**Gender of Drivers Involved in Crashes**

Gender of Driver	Driver Counts							
	Total	Percent of Total	Fatal	Percent of Fatal	Injury	Percent of Injury	PDO	Percent of PDO
Male	149,642	55.44%	1,000	67.70%	46,641	55.30%	102,001	55.41%
Female	103,956	38.52%	409	27.69%	35,209	41.74%	68,338	37.12%
Not Reported	16,301	6.04%	68	4.60%	2,496	2.96%	13,737	7.46%
<b>TOTAL</b>	<b>269,899</b>	<b>100.00%</b>	<b>1,477</b>	<b>100.00%</b>	<b>84,346</b>	<b>100.00%</b>	<b>184,076</b>	<b>100.00%</b>

Table 5 - 5

**License Status of Drivers Involved in Crashes**

License Status of Driver	Driver Counts							
	Total	Percent of Total	Fatal	Percent of Fatal	Injury	Percent of Injury	PDO	Percent of PDO
Arizona License	211,018	78.18%	1,041	70.48%	68,178	80.83%	141,799	77.03%
All Others*	58,881	21.82%	436	29.52%	16,168	19.17%	42,277	22.97%
<b>TOTAL</b>	<b>269,899</b>	<b>100.00%</b>	<b>1,477</b>	<b>100.00%</b>	<b>84,346</b>	<b>100.00%</b>	<b>184,076</b>	<b>100.00%</b>

\*Includes drivers that have a suspended, revoked, out-of-state or country license, as well as drivers with no license or unknown license type

Table 5 - 6

**Passengers Killed and Injured by Age and Gender\***

Age of Passenger	Passengers Killed			Passengers Injured			
	Total	Male	Female	Total	Male	Female	Gender Unknown
0-4	16	9	7	1,356	654	702	0
5-9	10	3	7	1,604	747	857	0
10-14	13	8	5	1,754	760	991	3
15-19	53	33	20	3,407	1,385	2,021	1
20-24	38	29	9	2,288	1,058	1,229	1
25-34	47	31	16	2,452	1,012	1,438	2
35-44	28	14	14	1,669	564	1,104	1
45-54	22	14	8	1,426	397	1,028	1
55-64	23	6	17	1,150	262	888	0
65-74	14	4	10	726	199	527	0
75 & Older	27	12	15	590	160	430	0
Not Stated	1	1	0	681	290	363	28
<b>TOTAL</b>	<b>292</b>	<b>164</b>	<b>128</b>	<b>19,103</b>	<b>7,488</b>	<b>11,578</b>	<b>37</b>

\*Does not include passengers of Motorcycles, Mopeds, or Motorscooters

## Section 5: – Motor Vehicle and Driver Descriptions

Table 5 - 7

### Drivers and Occupants Killed and Injured by Vehicle Type

Motor Vehicle Type	Drivers		Occupants	
	Killed	Injured	Killed	Injured
Passenger Car (Includes cars with trailer)	311	30,966	191	14,002
Pickup Truck and Vans	113	8,696	90	4,565
Pickup Truck With Camper	1	9	2	2
Other Vehicle With Camper	0	2	0	0
Truck Tractor Only	1	7	0	2
Truck Tractor and Semi-Trailer	9	222	2	60
Other Truck Combination	2	240	2	90
Farm Tractor and/or Farm Equipment	0	4	0	0
Taxicab	0	3	0	0
Commercial Bus	1	9	0	71
Non-Commercial Bus	0	22	0	124
School Bus	0	23	0	72
Motorcycle (two or three wheel)	127	2,689	8	240
Motorscooter or Motor Bicycle (Includes ATV)	9	36	2	6
Moped	0	4	0	0
Recreational Vehicle	1	10	0	6
Motor Home or House Car	1	14	1	12
Vehicle With Special Controls (Dual, Etc.)	0	0	0	0
Emergency Vehicle (Includes Privately Owned)	0	24	0	5
Military	0	0	0	0
Other Types Of Vehicles	2	58	1	13
Vehicle Type Not Reported	13	166	3	79
<b>TOTAL</b>	<b>591</b>	<b>43,204</b>	<b>302</b>	<b>19,349</b>

Table 5 - 8

### Drivers Killed and Injured by Age and Gender\*

Age of Driver	Drivers Killed			Drivers Injured			Gender Unknown
	Total	Male	Female	Total	Male	Female	
0-4	0	0	0	0	0	0	0
5-9	0	0	0	0	0	0	0
10-14	1	1	0	29	21	8	0
15-19	47	34	13	4,432	2,107	2,325	0
20-24	70	55	15	5,965	2,942	3,023	0
25-34	95	68	27	8,848	4,202	4,646	0
35-44	79	48	31	7,358	3,549	3,809	0
45-54	49	34	15	6,297	2,892	3,405	0
55-64	51	35	16	4,038	1,936	2,102	0
65-74	26	12	14	1,813	915	898	0
75 & Older	37	24	13	1,340	661	679	0
Not Stated	0	0	0	355	214	123	18
<b>TOTAL</b>	<b>455</b>	<b>311</b>	<b>144</b>	<b>40,475</b>	<b>19,439</b>	<b>21,018</b>	<b>18</b>

\*Does not include drivers of Motorcycles, Mopeds, or Motorscooters

## Section 5: – Motor Vehicle and Driver Descriptions

Table 5 - 9

### Licensed Drivers in Arizona by Age

Driver Age Group	Male Number	Percent	Female Number	Percent	Total Number	Percent	Cumulative Percent
16	11,000	0.52%	10,186	0.48%	21,186	0.50%	0.50%
17	19,979	0.95%	18,689	0.89%	38,668	0.92%	1.42%
18	27,283	1.29%	24,721	1.18%	52,004	1.23%	2.66%
19	30,694	1.46%	28,912	1.37%	59,606	1.42%	4.07%
20	31,644	1.50%	30,237	1.44%	61,881	1.47%	5.54%
21	33,197	1.57%	32,248	1.53%	65,445	1.55%	7.09%
22	34,447	1.63%	34,366	1.63%	68,813	1.63%	8.73%
23	35,004	1.66%	35,014	1.66%	70,018	1.66%	10.39%
24	36,368	1.72%	36,231	1.72%	72,599	1.72%	30.93%
25-34	401,275	19.03%	391,414	18.61%	792,689	18.82%	30.93%
35-44	425,668	20.19%	401,873	19.10%	827,541	19.65%	50.58%
45-54	403,598	19.14%	409,558	19.47%	813,156	19.30%	69.88%
55-64	318,426	15.10%	333,806	15.87%	652,232	15.48%	85.36%
65-74	178,043	8.44%	185,300	8.81%	363,343	8.63%	93.99%
75 & Older	122,095	5.79%	131,117	6.23%	253,212	6.01%	100.00%
<b>TOTALS</b>	<b>2,108,721</b>	<b>100.00%</b>	<b>2,103,672</b>	<b>100.00%</b>	<b>4,212,393</b>	<b>100.00%</b>	<b>100.00%</b>

Source: MVD - MV708 MV650653-1, Point-in-Time Driver Credential Report/All Driver Licenses by Age, Gender, & Class, dated 1/2/2008.

Table 5 - 10

### Driver Involvement by Age

Driver Age Group	Driver Counts							
	Total	Percent of Total	Fatal	Percent of Fatal	Injury	Percent of Injury	PDO	Percent of PDO
15 & Under	667	0.25%	8	0.54%	249	0.30%	410	0.22%
16	4,446	1.65%	13	0.88%	1,377	1.63%	3,056	1.66%
17	6,421	2.38%	20	1.35%	2,051	2.43%	4,350	2.36%
18	8,756	3.24%	46	3.11%	2,829	3.35%	5,881	3.19%
19	8,642	3.20%	53	3.59%	2,705	3.21%	5,884	3.20%
20	7,972	2.95%	42	2.84%	2,594	3.08%	5,336	2.90%
21	7,773	2.88%	41	2.78%	2,520	2.99%	5,212	2.83%
22	7,536	2.79%	48	3.25%	2,434	2.89%	5,054	2.75%
23	7,051	2.61%	27	1.83%	2,261	2.68%	4,763	2.59%
24	6,930	2.57%	47	3.18%	2,157	2.56%	4,726	2.57%
25-34	55,521	20.57%	317	21.46%	18,054	21.40%	37,150	20.18%
35-44	45,902	17.01%	246	16.66%	14,856	17.61%	30,800	16.73%
45-54	37,427	13.87%	205	13.88%	12,267	14.54%	24,955	13.56%
55-64	23,933	8.87%	147	9.95%	7,836	9.29%	15,950	8.66%
65-74	10,936	4.05%	76	5.15%	3,579	4.24%	7,281	3.96%
75 & Older	7,379	2.73%	72	4.87%	2,481	2.94%	4,826	2.62%
Not Stated	22,607	8.38%	69	4.67%	4,096	4.86%	18,442	10.02%
<b>TOTAL</b>	<b>269,899</b>	<b>100.00%</b>	<b>1,477</b>	<b>100.00%</b>	<b>84,346</b>	<b>100.00%</b>	<b>184,076</b>	<b>100.00%</b>



## Section 5: – Motor Vehicle and Driver Descriptions

Table 5 - 11

### Driver Errors

Type of Violation or Behavior	Driver Counts							
	Total	Percent of Total Drivers	Fatal	Percent of Fatal Drivers	Injury	Percent of Injury Drivers	PDO	Percent of PDO Drivers
No Improper Driving	125,752	46.59%	565	38.25%	40,378	47.87%	84,809	46.07%
Speeding*	48,594	18.00%	317	21.46%	15,805	18.74%	32,472	17.64%
Exceeded Lawful Speed	1,249	0.46%	72	4.87%	571	0.68%	606	0.33%
Failed to Yield Right-Of-Way	26,092	9.67%	97	6.57%	9,727	11.53%	16,268	8.84%
Followed Too Closely	5,190	1.92%	5	0.34%	1,391	1.65%	3,794	2.06%
Ran Stop Sign	1,237	0.46%	13	0.88%	527	0.62%	697	0.38%
Disregarded Traffic Signal	5,181	1.92%	33	2.23%	2,438	2.89%	2,710	1.47%
Made Improper Turn	4,272	1.58%	11	0.74%	921	1.09%	3,340	1.81%
Drove in Opposing Lane	1,424	0.53%	66	4.47%	543	0.64%	815	0.44%
Operated with Faulty Equipment	282	0.10%	6	0.41%	84	0.10%	192	0.10%
Required Motorcycle Safety Equipment Not Used	17	0.01%	3	0.20%	14	0.02%	0	0.00%
Passed in No-Passing Zone	117	0.04%	3	0.20%	29	0.03%	85	0.05%
Unsafe Lane Change	7,988	2.96%	8	0.54%	1,136	1.35%	6,844	3.72%
Other Unsafe Passing	1,062	0.39%	5	0.34%	181	0.21%	876	0.48%
Inattention	15,825	5.86%	41	2.78%	4,163	4.94%	11,621	6.31%
Other	9,913	3.67%	66	4.47%	2,559	3.03%	7,288	3.96%
Unknown	15,704	5.82%	166	11.24%	3,879	4.60%	11,659	6.33%
<b>TOTAL</b>	<b>269,899</b>	<b>100%</b>	<b>1,477</b>	<b>100%</b>	<b>84,346</b>	<b>100%</b>	<b>184,076</b>	<b>100%</b>

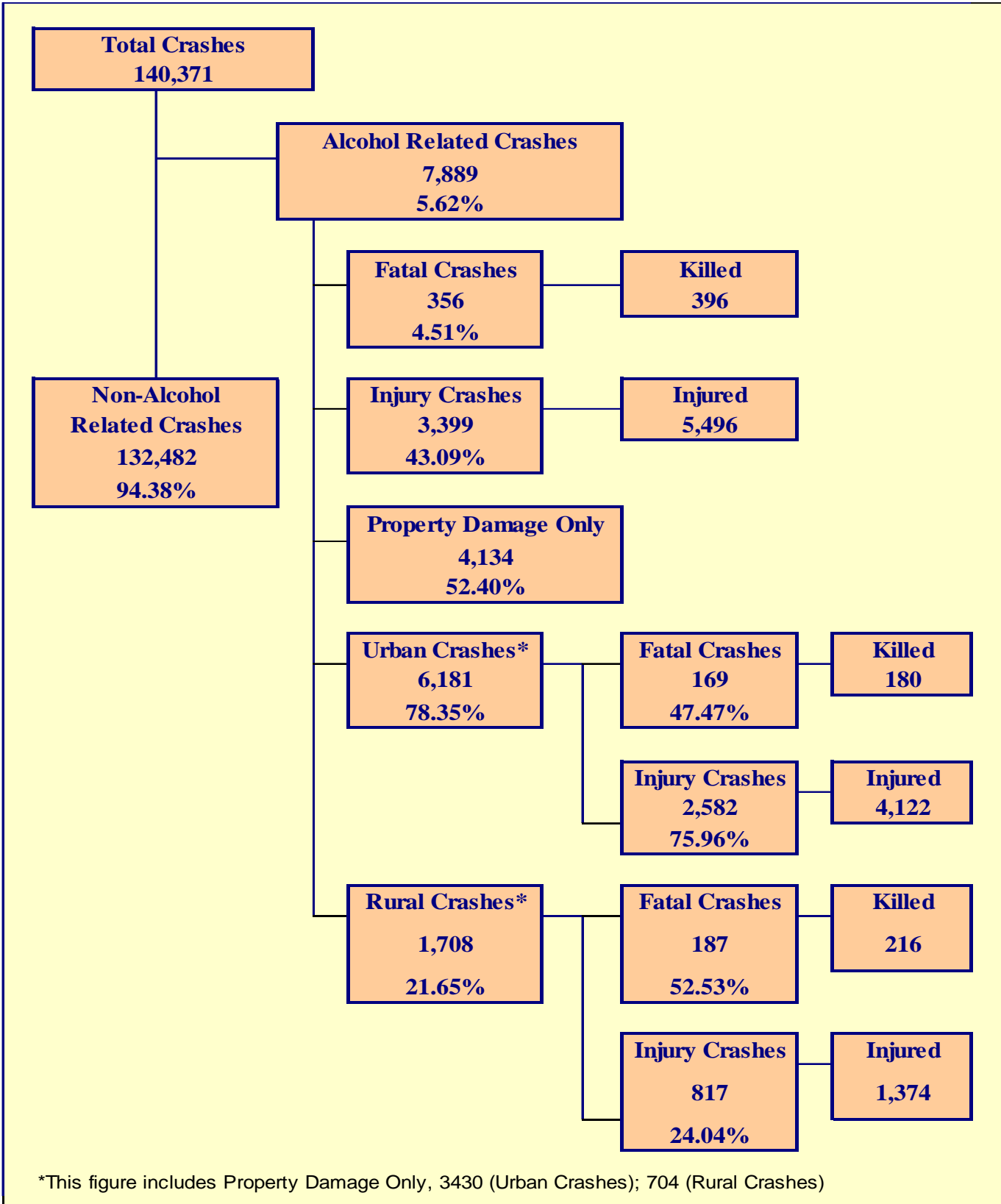
\*Driving too fast for conditions

Table 5 - 12

### Driver Physical Condition

Type of Condition	Driver Counts							
	Total	Percent of Total Drivers	Fatal	Percent of Fatal Drivers	Injury	Percent of Injury Drivers	PDO	Percent of PDO Drivers
No Apparent Influence	229,711	85.11%	774	52.40%	72,591	86.06%	156,346	84.94%
Had Been Drinking	7,694	2.85%	312	21.12%	3,217	3.81%	4,165	2.26%
Appeared to be Under Influence of Drugs*	395	0.15%	33	2.23%	176	0.21%	186	0.10%
Ill-Ability Influenced	386	0.14%	2	0.14%	220	0.26%	164	0.09%
Sleepy-Fatigued	1,631	0.60%	22	1.49%	757	0.90%	852	0.46%
Physical Impairment	205	0.08%	1	0.07%	102	0.12%	102	0.06%
Prescription Drugs	381	0.14%	10	0.68%	139	0.16%	232	0.13%
Other	2,327	0.86%	16	1.08%	643	0.76%	1,668	0.91%
Unknown	22,371	8.29%	284	19.23%	5,316	6.30%	16,771	9.11%
Not Reported	4,798	1.78%	23	1.56%	1,185	1.40%	3,590	1.95%
<b>TOTAL</b>	<b>269,899</b>	<b>100.00%</b>	<b>1,477</b>	<b>100.00%</b>	<b>84,346</b>	<b>100.00%</b>	<b>184,076</b>	<b>100.00%</b>

\*Illegal drugs or narcotics



The statistics in the Alcohol Related section represent those crashes where the investigating officer indicated that a driver had been drinking an alcoholic beverage and may or may not be substantiated. An assumption is to be made that the person's blood alcohol content (BAC) at the time of the crash was 0.08% or higher.

Table 6 - 1

**Economic Loss Due to Alcohol Related Crashes in Arizona for 2007**

Fatalities	\$488,743,200
Incapacitating Injuries	\$59,415,000
Non-Incapacitating Injuries	\$48,990,396
Possible Injuries	\$25,782,540
Property Damage Only	\$34,576,776
<b>TOTAL</b>	<b>\$657,507,912</b>

Refer to note on Page 4 for Economic Loss Estimates

Table 6 - 2

**Alcohol Related Crash History**

Year	Alcohol Related Crashes	Percent of all Crashes	Persons Killed	Percent of all Fatalities	Persons Injured	Percent of all Injuries
2003	8,141	6.21%	350	31.22%	6,513	9.04%
2004	8,334	6.00%	289	25.07%	6,507	8.84%
2005	8,024	5.71%	274	23.06%	6,110	8.61%
2006	8,154	5.71%	381	29.33%	5,891	8.47%
2007	7,889	5.62%	396	36.97%	5,496	8.36%

Table 6 - 3

**Manner of Collision in Alcohol Related Crashes**

Manner of Collision Type	Number of Crashes							
	Total	Percent of All Crashes	Fatal	Percent of Fatal Crashes	Injury	Percent of Injury Crashes	PDO	Percent of PDO Crashes
Sideswipe (same)	518	11.73%	7	6.25%	132	7.15%	379	15.43%
Sideswipe (opposite)	165	3.74%	2	1.79%	55	2.98%	108	4.40%
Angle	818	18.52%	22	19.64%	399	21.60%	397	16.16%
Left Turn	476	10.78%	10	8.93%	262	14.19%	204	8.30%
Rear-End	1,889	42.78%	19	16.96%	781	42.28%	1,089	44.32%
Head-On	217	4.91%	39	34.82%	106	5.74%	72	2.93%
Backing	83	1.88%	0	0.00%	10	0.54%	73	2.97%
Other	172	3.89%	12	10.71%	65	3.52%	95	3.87%
Non-Contact (mc)	1	0.02%	0	0.00%	1	0.05%	0	0.00%
Non-Contact (not mc)	17	0.38%	0	0.00%	7	0.38%	10	0.41%
U-Turn	60	1.36%	1	0.89%	29	1.57%	30	1.22%
<b>TOTAL</b>	<b>4,416</b>	<b>100%</b>	<b>112</b>	<b>100%</b>	<b>1,847</b>	<b>100%</b>	<b>2,457</b>	<b>100%</b>

## Section 6: – Alcohol Related Crashes

Table 6 - 4

### Alcohol Related Crashes by First Harmful Event

FHE Type	Number of Crashes				Number of Persons	
	Total	Fatal	Injury	PDO	Killed	Injured
Overturning	506	99	300	107	111	503
Collision with other Motor Vehicle	3,815	101	1,691	2,023	122	3,213
Collision with Pedestrian	295	72	211	12	72	242
Collision with Pedalcyclist	73	2	64	7	2	66
Collision with MV on other Rdway	3	1	1	1	1	4
Animal	13	1	3	9	1	7
Fixed Object	2,492	75	922	1,495	81	1,215
Object in Roadway	1	0	1	0	0	2
Other*	504	3	117	384	4	138
Miscellaneous**	187	2	89	96	2	106
<b>TOTAL</b>	<b>7,889</b>	<b>356</b>	<b>3,399</b>	<b>4,134</b>	<b>396</b>	<b>5,496</b>
*Includes Collision with Parked Vehicles, Trains, Machinery, and Unknown Objects						
**Includes Collision with Special Devices, Objects dropped from vehicles, Non-fixed Objects, as well as Vehicle Fires						

Table 6 - 5

### Alcohol Related Crashes by Vehicle Type

Motor Vehicle Type	Vehicle Counts				
	Total	Percent	Fatal	Injury	PDO
Passenger Car (Includes cars with trailer)	5,266	68.443%	177	2,133	2,956
Pickup Trucks and Vans	2,103	27.333%	91	873	1,139
Pickup Truck With Camper	4	0.052%	1	2	1
Other Vehicle With Camper	0	0.000%	0	0	0
Truck Tractor Only	1	0.013%	0	1	0
Truck Tractor and Semi-Trailer	5	0.065%	1	3	1
Other Truck Combination	26	0.338%	0	8	18
Farm Tractor and/or Farm Equipment	0	0.000%	0	0	0
Taxicab	0	0.000%	0	0	0
Commercial Bus	0	0.000%	0	0	0
Non-Commercial Bus	1	0.013%	0	1	0
School Bus	0	0.000%	0	0	0
Motorcycle (two or three wheel)	221	2.872%	36	170	15
Motorscooter or Motor Bicycle (Includes ATV)	7	0.091%	4	3	0
Moped	0	0.000%	0	0	0
Recreational Vehicle	1	0.013%	0	1	0
Motor Home or House Car	1	0.013%	0	0	1
Vehicle With Special Controls (Dual, Etc.)	0	0.000%	0	0	0
Emergency Vehicle (Inc. Privately Owned)	0	0.000%	0	0	0
Military	0	0.000%	0	0	0
Other Types Of Vehicles	6	0.078%	0	5	1
Vehicle Type Not Reported	52	0.676%	2	17	33
<b>TOTAL</b>	<b>7,694</b>	<b>100.00%</b>	<b>312</b>	<b>3,217</b>	<b>4,165</b>

Table 6 - 6

**Lighting Conditions in Alcohol Related Crashes**

Type of Lighting Conditions	Incident Counts				Person Counts	
	Total	Fatal	Injury	PDO	Killed	Injured
Daylight	2,188	76	977	1,135	90	1,606
Dawn or Dusk	379	21	171	187	24	273
Darkness	5,307	254	2,247	2,806	277	3,610
Not Reported	15	5	4	6	5	7
<b>TOTAL</b>	<b>7,889</b>	<b>356</b>	<b>3,399</b>	<b>4,134</b>	<b>396</b>	<b>5,496</b>

Table 6 - 7

**Road Surface Conditions in Alcohol Related Crashes**

Type of Road Surface Condition	Incident Counts				Person Counts	
	Total	Fatal	Injury	PDO	Killed	Injured
Dry	7,331	315	3,195	3,821	354	5,157
Wet	352	15	132	205	16	213
Not Reported, No Unusual Condition	90	15	32	43	15	48
Sand, Mud, Dirt, Oil or Gravel	69	9	28	32	9	57
Snow	12	0	1	11	0	1
Slush	9	0	1	8	0	2
Ice	14	0	5	9	0	11
Other	7	0	4	3	0	5
Unknown	5	2	1	2	2	2
<b>TOTAL</b>	<b>7,889</b>	<b>356</b>	<b>3,399</b>	<b>4,134</b>	<b>396</b>	<b>5,496</b>

Table 6 - 8

**Gender of Drivers Involved in Alcohol Related Crashes**

Gender of Driver	Driver Counts							
	Total	Percent of Total	Fatal	Percent of Fatal	Injury	Percent of Injury	PDO	Percent of PDO
Male	5,927	77.03%	252	80.77%	2,512	78.09%	3,163	75.94%
Female	1,677	21.80%	59	18.91%	685	21.29%	933	22.40%
Not Reported	90	1.17%	1	0.32%	20	0.62%	69	1.66%
<b>TOTAL</b>	<b>7,694</b>	<b>100.00%</b>	<b>312</b>	<b>100.00%</b>	<b>3,217</b>	<b>100.00%</b>	<b>4,165</b>	<b>100.00%</b>

*In total crashes across the state, 55.44% of the drivers were males. When alcohol was involved, males accounted for 77.03% of the drivers.*

**Section 6: – Alcohol Related Crashes**

**Table 6 - 9**

**Driver Involvement by Age in Alcohol Related Crashes**

Driver Age Group	Driver Counts							
	Total	Percent of Total	Fatal	Percent of Fatal	Injury	Percent of Injury	PDO	Percent of PDO
15 & Under	16	0.21%	3	0.96%	8	0.25%	5	0.12%
16	29	0.38%	0	0.00%	14	0.44%	15	0.36%
17	103	1.34%	4	1.28%	50	1.55%	49	1.18%
18	249	3.24%	9	2.88%	107	3.33%	133	3.19%
19	285	3.70%	14	4.49%	115	3.57%	156	3.75%
20	292	3.80%	11	3.53%	123	3.82%	158	3.79%
21	413	5.37%	14	4.49%	154	4.79%	245	5.88%
22	395	5.13%	19	6.09%	164	5.10%	212	5.09%
23	341	4.43%	13	4.17%	147	4.57%	181	4.35%
24	330	4.29%	18	5.77%	134	4.17%	178	4.27%
25-34	2,172	28.23%	79	25.32%	909	28.26%	1,184	28.43%
35-44	1,391	18.08%	69	22.12%	598	18.59%	724	17.38%
45-54	932	12.11%	33	10.58%	395	12.28%	504	12.10%
55-64	393	5.11%	15	4.81%	164	5.10%	214	5.14%
65-74	119	1.55%	5	1.60%	57	1.77%	57	1.37%
75 & Older	46	0.60%	5	1.60%	19	0.59%	22	0.53%
Not Stated	188	2.44%	1	0.32%	59	1.83%	128	3.07%
<b>TOTAL</b>	<b>7,694</b>	<b>100.00%</b>	<b>312</b>	<b>100.00%</b>	<b>3,217</b>	<b>100.00%</b>	<b>4,165</b>	<b>100.00%</b>

**Table 6 - 10**

**When Alcohol Related Crashes Occurred in 2007**

Time of Day	Total	Weekday	Weekend*
Daytime**	2,113	1,330	783
Nighttime	5,776	2,235	3,541
<b>Total</b>	<b>7,889</b>	<b>3,565</b>	<b>4,324</b>
*Weekend begins at 6:00 p.m. on Friday and continues through 6:00 a.m. Monday. All other times and days are considered Weekdays.			
**Day time refers to the hours between 6:00 a.m. and 6:00 p.m.			

**Table 6 - 11**

**Restraint Usage for Drinking Drivers**

Severity of Injury	Not Reported	None Used	Lap Belt	Lap & Shoulder	Passive Belt	Passive & Lap	Protective Helmet	Other
No Injury	1,594	365	20	2,940	3	1	2	5
Unknown Injury	231	4	1	59	0	0	1	1
Possible Injury	231	125	6	373	0	0	5	1
Non-Incapacitating Injury	357	254	2	471	0	0	16	2
Incapacitating Injury	128	183	1	100	0	0	15	1
Fatal Injury	28	128	0	29	2	0	9	0
<b>TOTALS</b>	<b>2,569</b>	<b>1,059</b>	<b>30</b>	<b>3,972</b>	<b>5</b>	<b>1</b>	<b>48</b>	<b>10</b>

Table 6 - 12

**Persons Killed and Injured in Alcohol Related Crashes**

Age of Victim	Persons Killed			Persons Injured			
	Total	Male	Female	Total	Male	Female	Gender Unknown
0-4	2	0	2	99	44	55	0
5-9	1	0	1	92	46	46	0
10-14	3	2	1	85	44	41	0
15-19	46	33	13	680	394	286	0
20-24	80	70	10	1,125	780	345	0
25-34	91	66	25	1,295	909	386	0
35-44	77	54	23	873	561	312	0
45-54	58	45	13	629	379	250	0
55-64	22	17	5	313	197	116	0
65-74	8	7	1	110	70	40	0
75 & Older	8	4	4	61	36	25	0
Not Stated	0	0	0	134	82	45	7
<b>TOTAL</b>	<b>396</b>	<b>298</b>	<b>98</b>	<b>5,496</b>	<b>3,542</b>	<b>1,947</b>	<b>7</b>

Table 6 - 13

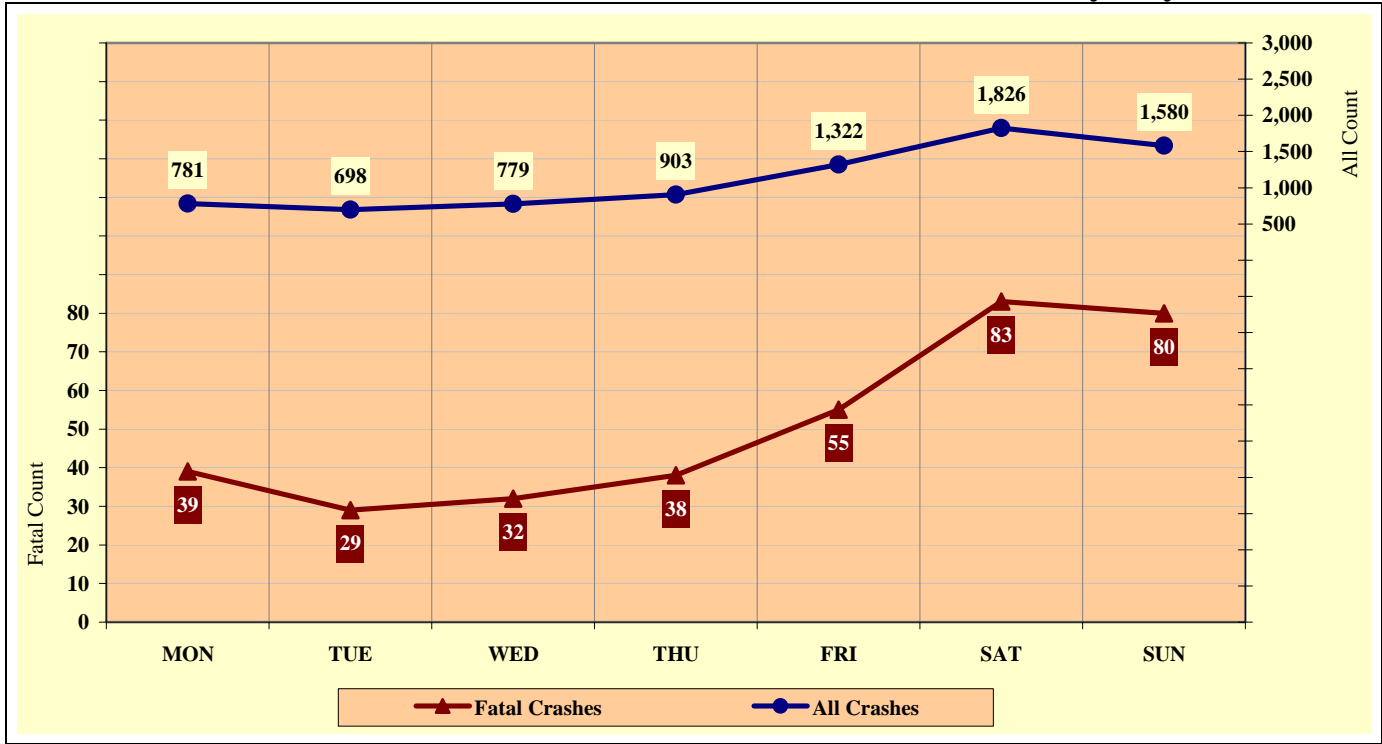
**Alcohol Related Crashes by County**

County	Number of Crashes				Number of Persons	
	Total	Fatal	Injury	PDO	Killed	Injured
Apache	77	20	28	29	22	58
Cochise	96	4	50	42	5	72
Coconino	226	13	87	126	18	149
Gila	82	6	42	34	6	72
Graham	39	1	16	22	1	37
Greenlee	10	1	5	4	1	7
La Paz	26	3	11	12	5	16
Maricopa	5,055	157	2,128	2,770	168	3,416
Mohave	307	18	138	151	19	212
Navajo	167	27	73	67	33	138
Pima	1,047	44	489	514	48	810
Pinal	235	35	104	96	39	196
Santa Cruz	22	3	11	8	3	13
Yavapai	299	16	127	156	18	176
Yuma	201	8	90	103	10	124
<b>TOTAL</b>	<b>7,889</b>	<b>356</b>	<b>3,399</b>	<b>4,134</b>	<b>396</b>	<b>5,496</b>

**Section 6: – Alcohol Related Crashes**

**Chart 6 - 1**

**All Alcohol Related Crashes vs. Fatal Alcohol Related Crashes by Day of Week**



**Chart 6 - 2**

**All Alcohol Related Crashes vs. Fatal Alcohol Related Crashes by Month**

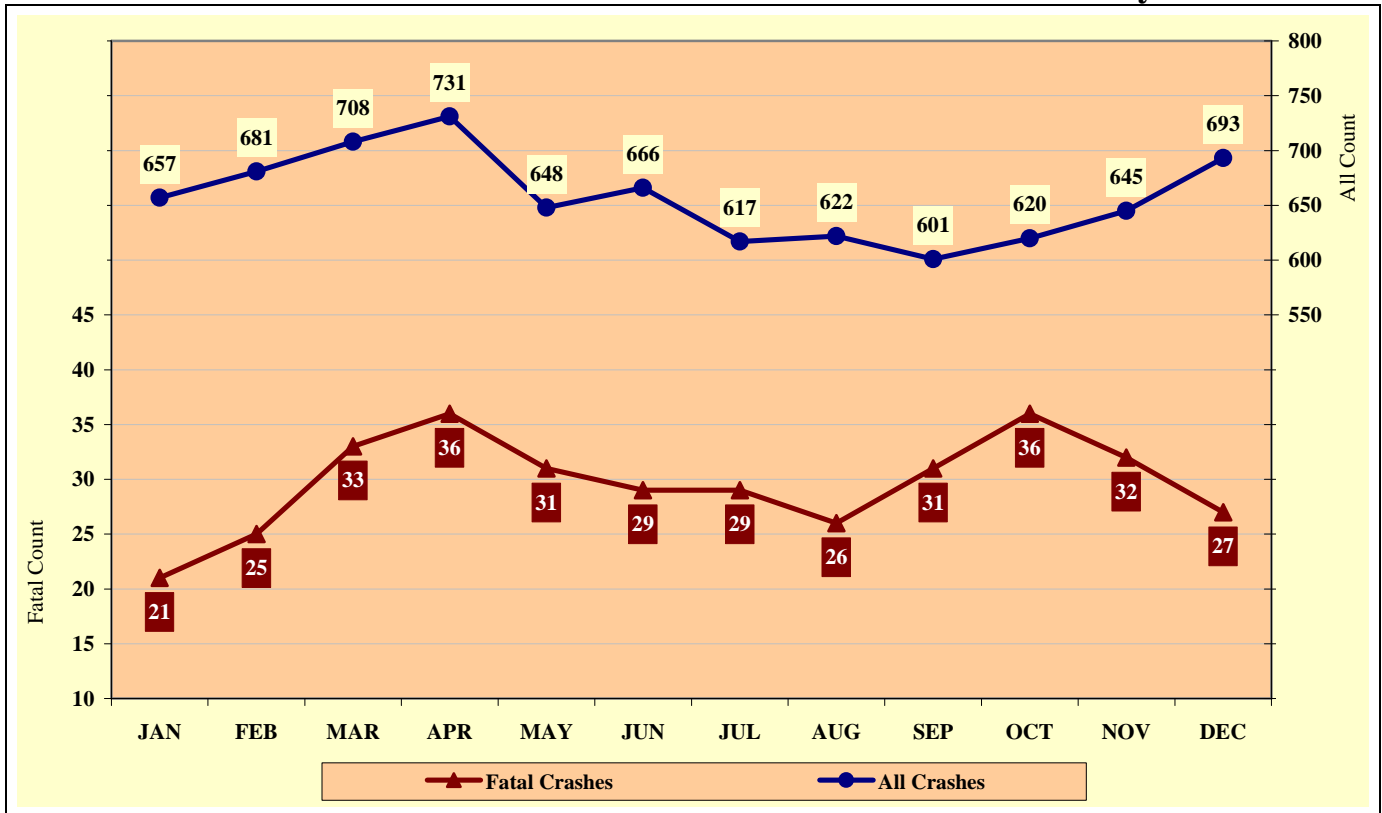




Chart 6 - 3

All Alcohol Related Crashes vs. Fatal Alcohol Related Crashes - Weekdays

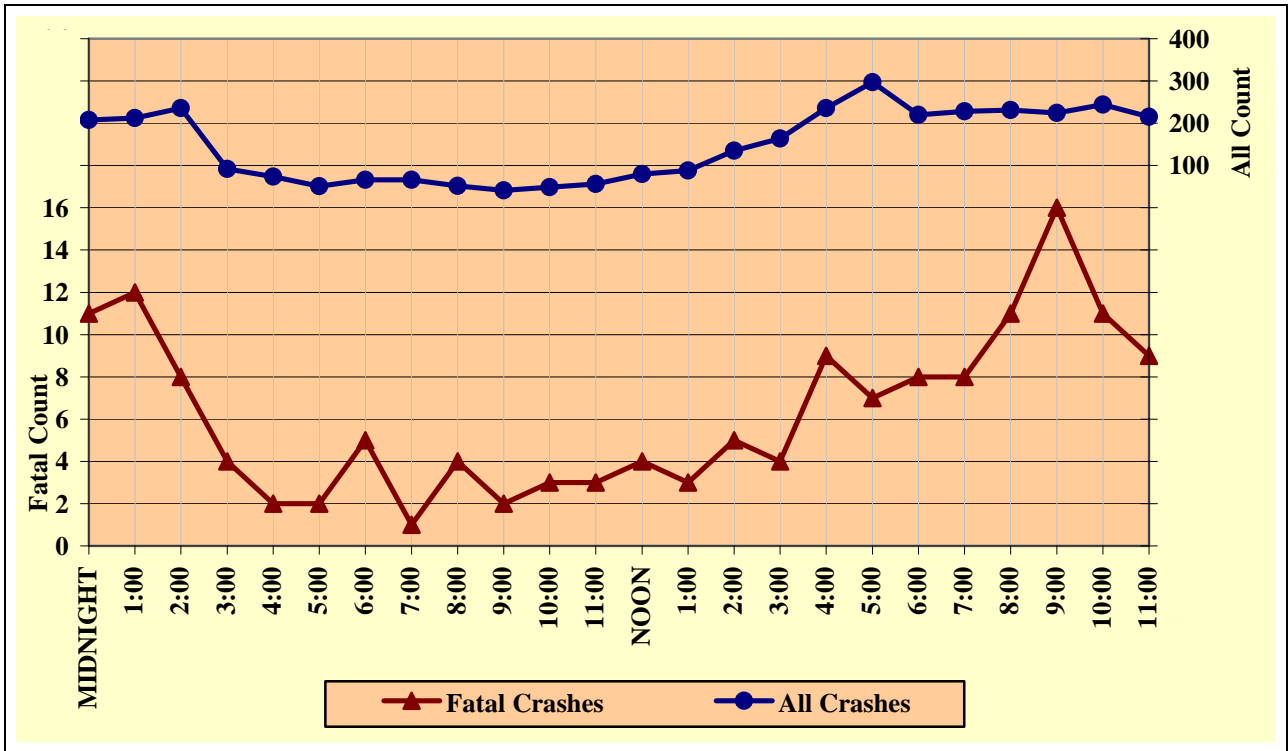
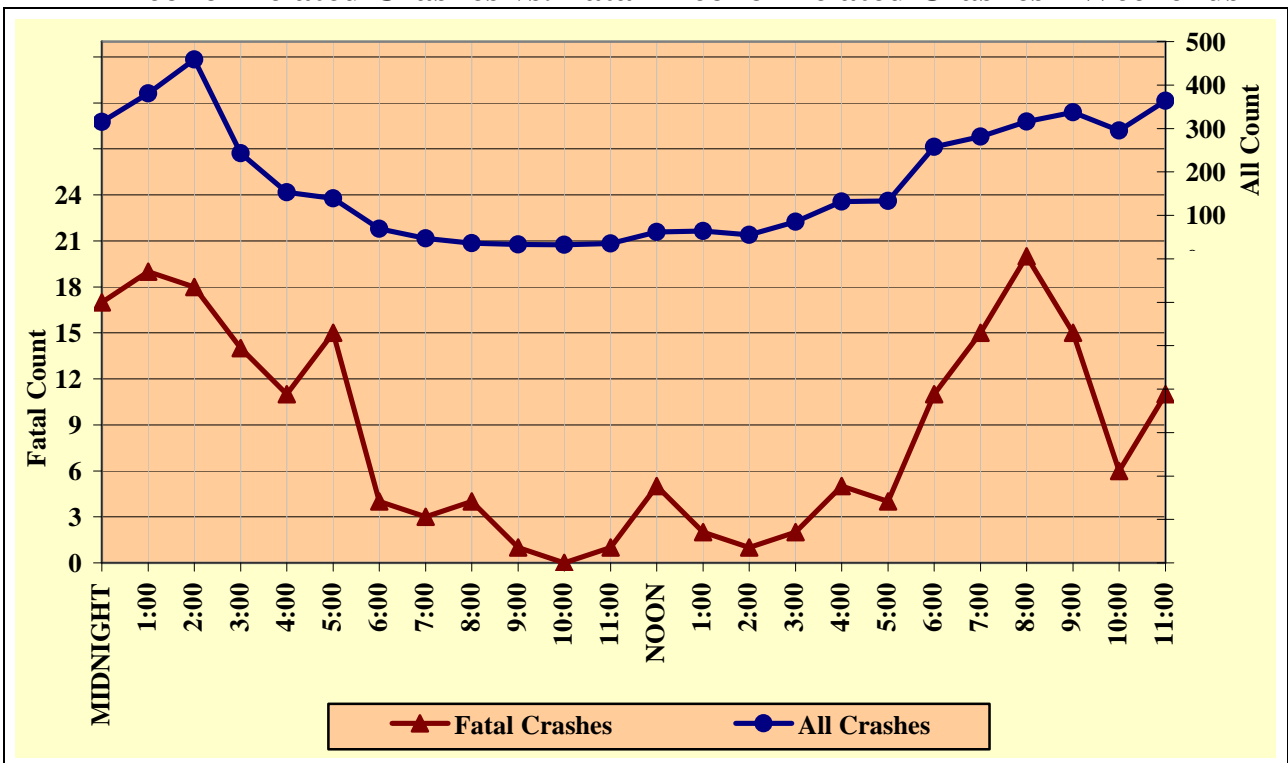


Chart 6 - 4

All Alcohol Related Crashes vs. Fatal Alcohol Related Crashes - Weekends



**Section 6: – Alcohol Related Crashes**

**Table 6 - 14**

**Alcohol Related Crashes by Hour and Day of Week**

Hour Beginning	Total Crashes		Monday		Tuesday		Wednesday		Thursday		Friday		Saturday		Sunday		Weekdays		Weekends	
	All	Fatal	All	Fatal	All	Fatal	All	Fatal	All	Fatal	All	Fatal	All	Fatal	All	Fatal	All	Fatal	All	Fatal
<b>MIDNIGHT</b>	523	28	43	2	32	2	45	2	63	3	68	4	144	8	128	7	208	11	315	17
<b>1:00</b>	593	31	41	0	32	3	48	2	62	3	70	4	172	8	168	11	212	12	381	19
<b>2:00</b>	695	26	55	4	42	1	49	0	53	2	92	5	214	8	190	6	236	8	459	18
<b>3:00</b>	335	18	33	2	15	2	16	1	24	0	37	1	108	6	102	6	92	4	243	14
<b>4:00</b>	227	13	16	3	14	1	27	1	17	0	16	0	53	4	84	4	74	2	153	11
<b>5:00</b>	190	17	26	1	15	1	4	0	17	0	15	1	48	5	65	9	51	2	139	15
<b>6:00</b>	135	9	14	0	11	1	12	1	15	2	14	1	37	2	32	2	66	5	69	4
<b>7:00</b>	113	4	17	0	14	0	11	1	9	0	15	0	26	3	21	0	66	1	47	3
<b>8:00</b>	88	8	11	1	11	0	9	1	11	1	10	1	20	2	16	2	52	4	36	4
<b>9:00</b>	74	3	12	0	7	1	9	0	5	0	8	1	19	0	14	1	41	2	33	1
<b>10:00</b>	81	3	12	0	9	1	9	0	14	1	5	1	16	0	16	0	49	3	32	0
<b>11:00</b>	91	4	8	0	7	0	11	2	16	0	14	1	23	1	12	0	56	3	35	1
<b>NOON</b>	142	9	18	0	16	0	7	1	23	3	16	0	36	1	26	4	80	4	62	5
<b>1:00</b>	152	5	15	1	18	1	13	0	18	0	24	1	37	0	27	2	88	3	64	2
<b>2:00</b>	190	6	27	0	20	1	23	1	26	2	39	1	33	1	22	0	135	5	55	1
<b>3:00</b>	249	6	40	3	27	0	27	0	35	1	35	0	35	0	50	2	164	4	85	2
<b>4:00</b>	368	14	48	4	48	2	41	0	41	1	58	2	77	2	55	3	236	9	132	5
<b>5:00</b>	430	11	56	0	50	2	50	3	59	0	82	2	70	3	63	1	297	7	133	4
<b>6:00</b>	478	19	47	4	51	1	66	1	56	2	88	4	78	5	92	2	220	8	258	11
<b>7:00</b>	509	23	55	1	51	1	58	4	64	2	95	2	97	7	89	6	228	8	281	15
<b>8:00</b>	547	31	50	2	56	2	60	3	65	4	122	8	101	9	93	3	231	11	316	20
<b>9:00</b>	561	31	38	4	50	4	68	6	68	2	139	5	109	2	89	8	224	16	337	15
<b>10:00</b>	539	17	44	4	57	1	66	1	77	5	109	4	124	1	62	1	244	11	295	6
<b>11:00</b>	579	20	55	3	45	1	50	1	65	4	151	6	149	5	64	0	215	9	364	11
<b>TOTAL</b>	<b>7,889</b>	<b>356</b>	<b>781</b>	<b>39</b>	<b>698</b>	<b>29</b>	<b>779</b>	<b>32</b>	<b>903</b>	<b>38</b>	<b>1,322</b>	<b>55</b>	<b>1,826</b>	<b>83</b>	<b>1,580</b>	<b>80</b>	<b>3,565</b>	<b>152</b>	<b>4,324</b>	<b>204</b>

*Crashes during Weekends accounted for 54.81% of all Alcohol Related crashes and 57.30% of Alcohol Related Fatal Crashes.*

*Crashes during Weekdays accounted for 45.19% of all Alcohol Related crashes and 42.70% of Alcohol Related Fatal Crashes.*

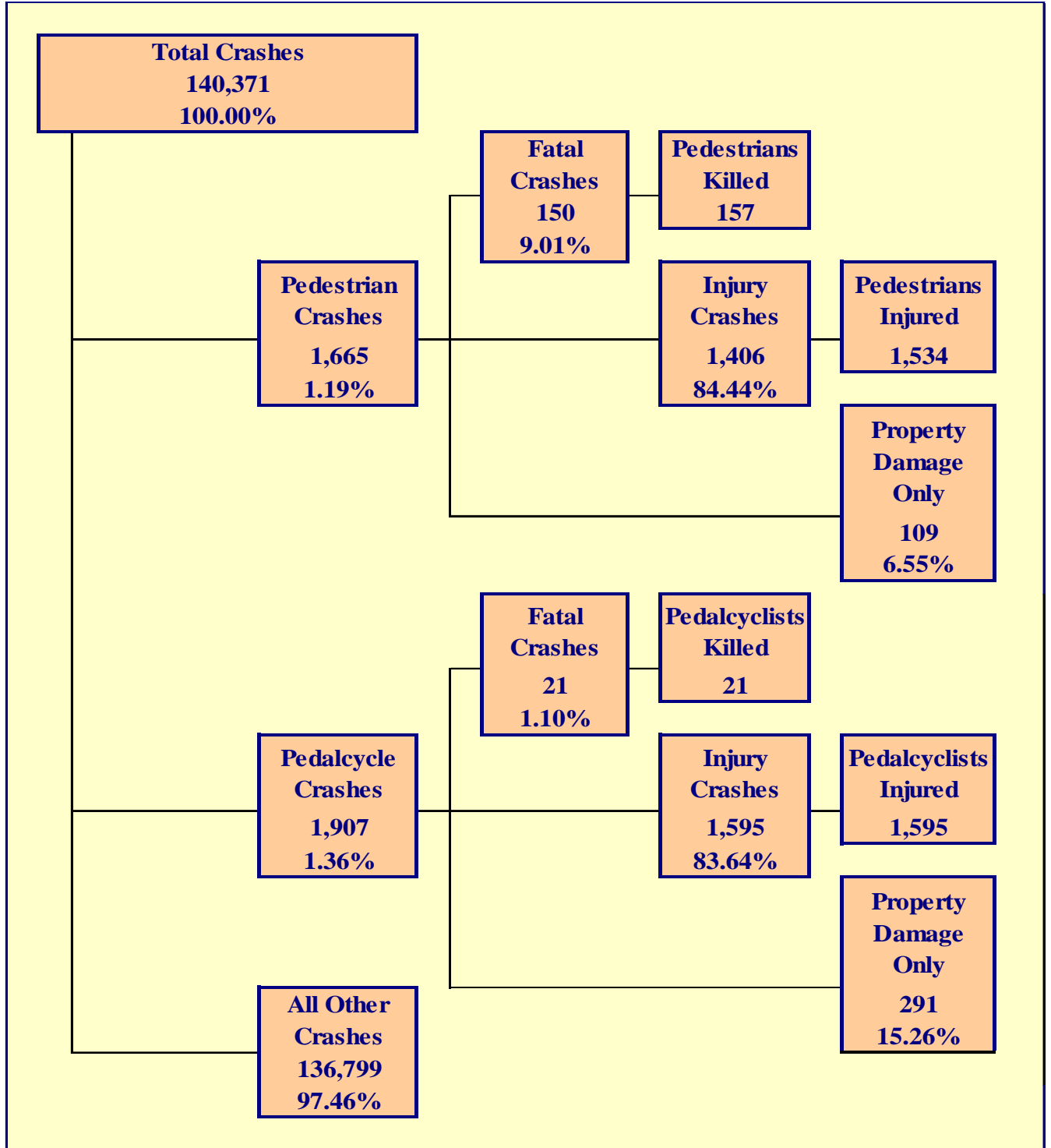


Table 7 - 1

**Pedestrians Killed and Injured By Age and Gender**

Age Group	Pedestrians Killed			Pedestrians Injured			
	Total	Male	Female	Total	Male	Female	Gender Unknown
0-4	3	0	3	40	22	18	0
5-9	0	0	0	85	44	41	0
10-14	3	3	0	152	92	60	0
15-19	11	6	5	202	112	90	0
20-24	12	12	0	131	82	49	0
25-34	26	16	10	195	124	71	0
35-44	32	22	10	196	119	77	0
45-54	29	23	6	211	130	81	0
55-64	13	10	3	134	85	49	0
65-74	12	6	6	73	44	29	0
75 & Older	16	9	7	48	30	18	0
Not Stated	0	0	0	67	46	20	1
<b>TOTAL</b>	<b>157</b>	<b>107</b>	<b>50</b>	<b>1,534</b>	<b>930</b>	<b>603</b>	<b>1</b>

Table 7 - 2

**Pedestrian Crashes by Geographic Location**

Category	Total	Urban	% of Total	Rural	% of Total
Total Crashes	1,665	1,522	91.41%	143	8.59%
Fatal Crashes	150	102	68.00%	48	32.00%
Injury Crashes	1,406	1,319	93.81%	87	6.19%
PDO Crashes	109	101	92.66%	8	7.34%
Persons Killed	157	107	68.15%	50	31.85%
Persons Injured	1,534	1,430	93.22%	104	6.78%

Table 7 - 3

**Pedestrian Crash History**

Year	Pedestrian Crashes	Percent of all Crashes	Pedestrians Killed	Percent of all Fatalities	Pedestrians Injured	Percent of all Injuries
2003	1,595	1.22%	126	11.24%	1,528	2.12%
2004	1,635	1.18%	135	11.71%	1,573	2.14%
2005	1,591	1.13%	166	13.97%	1,480	2.09%
2006	1,641	1.15%	172	13.24%	1,465	2.11%
2007	1,665	1.19%	157	14.66%	1,534	2.33%

Table 7 - 4

**Pedestrians Killed by Age and Action**

Pedestrian Action	Total	Age Group of Pedestrian								
		0-4	5-9	10-14	15-19	20-24	25-44	44-64	65 & Older	Not Stated
Crossing Road	88	1	0	1	3	4	34	26	19	0
Walking With Traffic	10	0	0	0	2	0	6	1	1	0
Walking Against Traffic	6	0	0	0	0	1	1	2	2	0
Standing	15	1	0	0	1	2	5	4	2	0
Lying	6	0	0	0	1	2	1	2	0	0
Getting on/off Vehicle	2	0	0	0	0	0	2	0	0	0
Working on/pushing Veh	5	0	0	0	0	1	1	1	2	0
Working on Road	0	0	0	0	0	0	0	0	0	0
Other	12	1	0	2	2	0	4	2	1	0
Unknown	13	0	0	0	2	2	4	4	1	0
<b>TOTAL</b>	<b>157</b>	<b>3</b>	<b>0</b>	<b>3</b>	<b>11</b>	<b>12</b>	<b>58</b>	<b>42</b>	<b>28</b>	<b>0</b>

Table 7 - 5

**Pedestrians Injured by Age and Action**

Pedestrian Action	Total	Age Group of Pedestrian								
		0-4	5-9	10-14	15-19	20-24	25-44	44-64	65 & Older	Not Stated
Crossing Road	900	30	58	102	126	65	211	201	71	36
Walking With Traffic	81	1	3	9	8	7	25	21	4	3
Walking Against Traffic	95	0	4	5	13	13	24	20	12	4
Standing	81	2	1	3	9	7	25	21	7	6
Lying	7	0	0	0	3	0	4	0	0	0
Getting on/off Vehicle	9	0	0	0	0	4	3	2	0	0
Working on/pushing Veh	8	0	0	0	0	3	4	1	0	0
Working on Road	10	0	0	0	1	0	4	5	0	0
Other	229	4	16	20	30	21	57	52	21	8
Unknown	114	3	3	13	12	11	34	22	6	10
<b>TOTAL</b>	<b>1,534</b>	<b>40</b>	<b>85</b>	<b>152</b>	<b>202</b>	<b>131</b>	<b>391</b>	<b>345</b>	<b>121</b>	<b>67</b>

Table 7 - 6

**Pedestrian Physical Condition in Motor Vehicle Crashes**

Type of Condition	Pedestrian Counts									
	Total	Percent of Total	Fatal	Percent of Fatal	Injury	Percent of Injury	PDO	Percent of PDO	Unknown	Percent of Unknown
No Apparent Influence	1,092	59.93%	34	21.66%	982	64.02%	70	64.22%	6	27.27%
Had Been Drinking	262	14.38%	64	40.76%	186	12.13%	11	10.09%	1	4.55%
Appeared To Be Under The Influence of Drugs*	18	0.99%	10	6.37%	7	0.46%	1	0.92%	0	0.00%
Ill-Ability Influenced	2	0.11%	0	0.00%	2	0.13%	0	0.00%	0	0.00%
Sleepy-Fatigued	0	0.00%	0	0.00%	0	0.00%	0	0.00%	0	0.00%
Physical Impairment	8	0.44%	1	0.64%	6	0.39%	0	0.00%	1	4.55%
Prescription Drugs	2	0.11%	0	0.00%	2	0.13%	0	0.00%	0	0.00%
Other	28	1.54%	1	0.64%	26	1.69%	1	0.92%	0	0.00%
Unknown	264	14.49%	38	24.20%	200	13.04%	14	12.84%	12	54.55%
Not Reported	146	8.01%	9	5.73%	123	8.02%	12	11.01%	2	9.09%
<b>TOTAL</b>	<b>1,822</b>	<b>100%</b>	<b>157</b>	<b>100%</b>	<b>1,534</b>	<b>100%</b>	<b>109</b>	<b>100%</b>	<b>22</b>	<b>100%</b>

\*Illegal drugs or narcotics

## Section 7: – Pedestrian and Pedalcyclist Crashes

Table 7 - 7

### Lighting Conditions in Pedestrian Crashes

Type of Lighting Conditions	Incident Counts			
	Total	Fatal	Injury	PDO
Daylight	955	39	846	70
Dawn or Dusk	107	6	96	5
Darkness	656	107	517	32
Not Reported	11	6	4	1
<b>TOTAL</b>	<b>1,729</b>	<b>158</b>	<b>1,463</b>	<b>108</b>

Table 7 - 8

### Weather Conditions in Pedestrian Crashes

Type of Conditions	Incident Counts			
	Total	Fatal	Injury	PDO
Clear	1,520	133	1,287	100
Cloudy	138	11	120	7
Sleet/Hail	1	0	1	0
Rain	46	4	41	1
Snow	3	0	3	0
Severe Crosswinds	2	0	2	0
Blowing Sand, Soil, Dirt, Snow	2	0	2	0
Fog, Smog, Smoke	1	0	1	0
Not Reported	16	10	6	0
<b>TOTAL</b>	<b>1,729</b>	<b>158</b>	<b>1,463</b>	<b>108</b>

Table 7 - 9

### Pedalcyclists Killed and Injured by Age and Gender

Age Group	Pedalcyclists Killed			Pedalcyclists Injured			
	Total	Male	Female	Total	Male	Female	Gender Unknown
0-4	0	0	0	6	5	1	0
5-9	0	0	0	82	70	12	0
10-14	2	2	0	216	180	36	0
15-19	0	0	0	225	175	50	0
20-24	0	0	0	199	140	59	0
25-34	2	2	0	234	167	67	0
35-44	3	3	0	230	182	48	0
45-54	3	1	2	229	187	42	0
55-64	6	6	0	92	87	5	0
65-74	3	3	0	24	23	1	0
75 & Older	2	2	0	18	17	1	0
Not Stated	0	0	0	40	30	9	1
<b>TOTAL</b>	<b>21</b>	<b>19</b>	<b>2</b>	<b>1,595</b>	<b>1,263</b>	<b>331</b>	<b>1</b>

Table 7 - 10

**Pedalcycle Crashes by Geographic Location**

Category	Total	Urban	% of Total	Rural	% of Total
Total Crashes	1,907	1,738	91.14%	169	8.86%
Fatal Crashes	21	13	61.90%	8	38.10%
Injury Crashes	1,595	1,461	91.60%	134	8.40%
PDO Crashes	291	264	90.72%	27	9.28%
Persons Killed	21	13	61.90%	8	38.10%
Persons Injured	1,595	1,458	91.41%	137	8.59%

Table 7 - 11

**Pedalcycle Crash History**

Year	Pedalcycle Crashes	Percent of all Crashes	Pedalcyclists Killed	Percent of all Fatalities	Pedalcyclists Injured	Percent of all Injuries
2003	1,878	1.43%	15	1.34%	1,622	2.25%
2004	2,005	1.44%	27	2.34%	1,706	2.32%
2005	2,029	1.45%	36	3.03%	1,725	2.43%
2006	1,865	1.31%	29	2.23%	1,546	2.22%
2007	1,907	1.36%	21	1.96%	1,595	2.43%

Table 7 - 12

**Lighting Conditions in Pedalcyclist Crashes**

Type of Lighting Conditions	Incident Counts			
	Total	Fatal	Injury	PDO
Daylight	1,492	13	1,240	239
Dawn or Dusk	113	1	95	17
Darkness	297	7	255	35
Not Reported	5	0	5	0
<b>TOTAL</b>	<b>1,907</b>	<b>21</b>	<b>1,595</b>	<b>291</b>

Table 7 - 13

**Weather Conditions in Pedalcyclist Crashes**

Type of Conditions	Incident Counts			
	Total	Fatal	Injury	PDO
Clear	1,703	18	1,426	259
Cloudy	163	2	133	28
Sleet/Hail	0	0	0	0
Rain	32	0	29	3
Snow	0	0	0	0
Severe Crosswinds	0	0	0	0
Blowing Sand, Soil, Dirt, Snow	0	0	0	0
Fog, Smog, Smoke	1	0	1	0
Not Reported	8	1	6	1
<b>TOTAL</b>	<b>1,907</b>	<b>21</b>	<b>1,595</b>	<b>291</b>

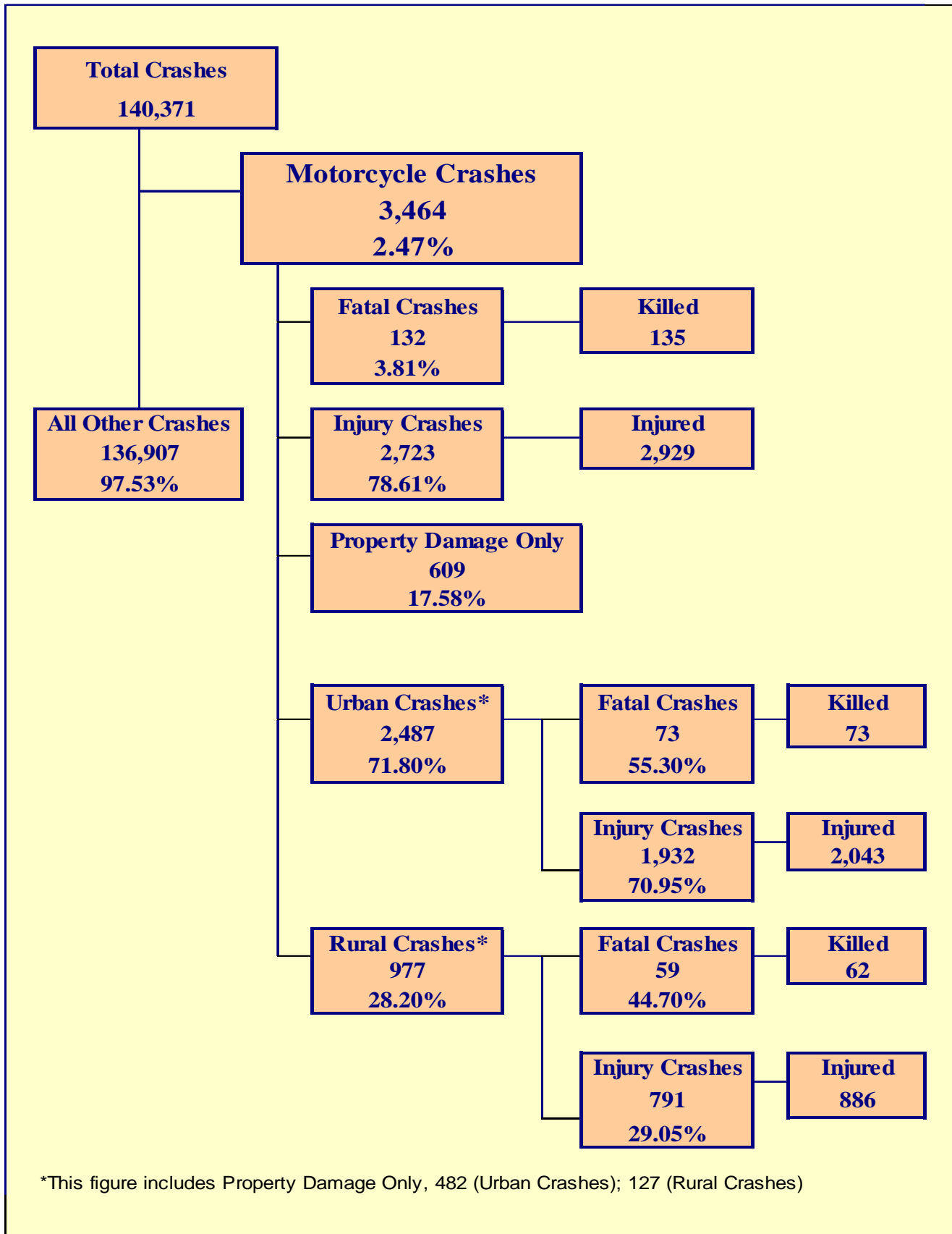




Chart 8 - 1

MC Fatalities by Year

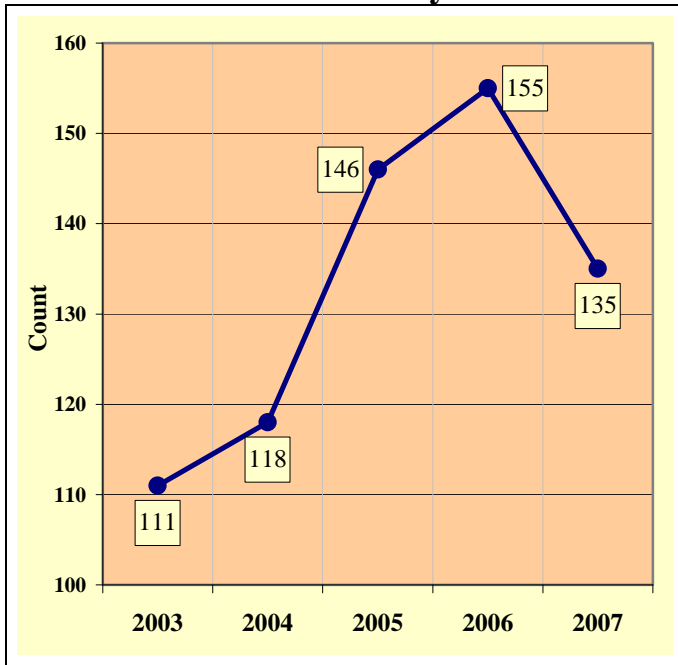
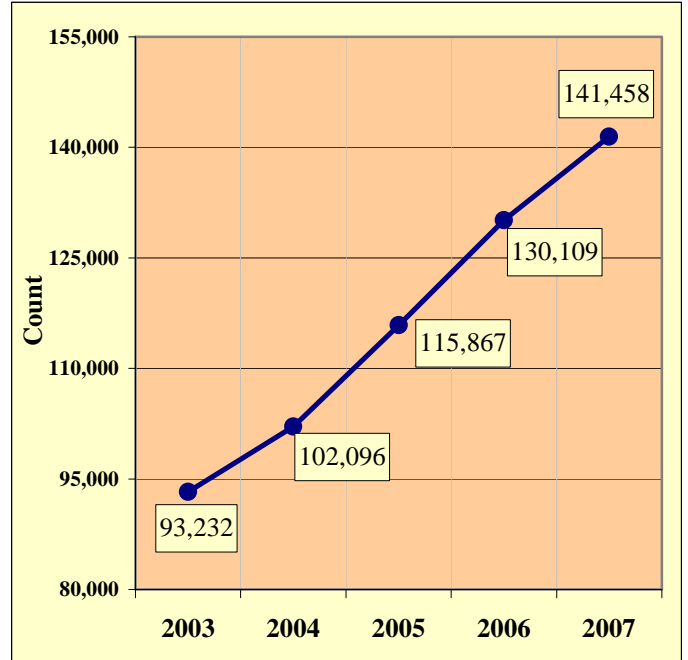


Chart 8 - 2

MC Registrations in Arizona



Total Point-in-Time of Registered Motorcycles at the end of Calendar year 2007.

(Source: MVD - MV988 MV630419 Currently Registered Vehicles by County Listing (motorcycle sub category), reports dated 12/31/07.)

Chart 8 - 3

Fatality Rate per Registered MC

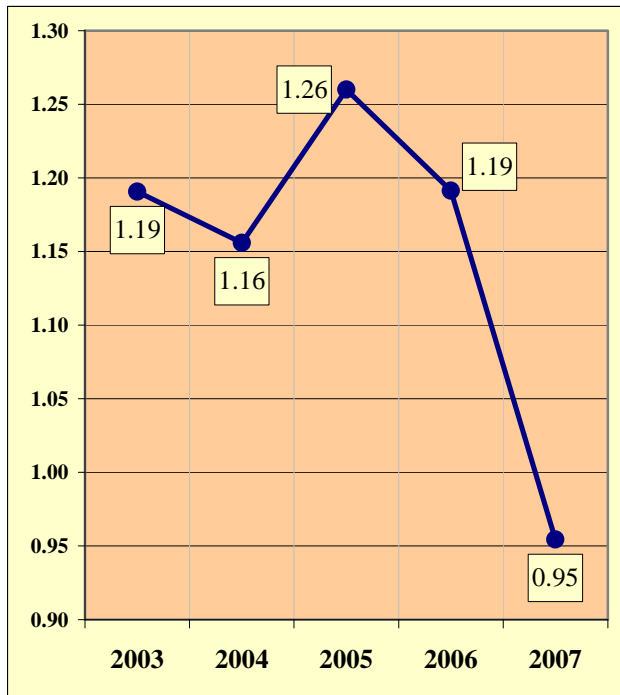
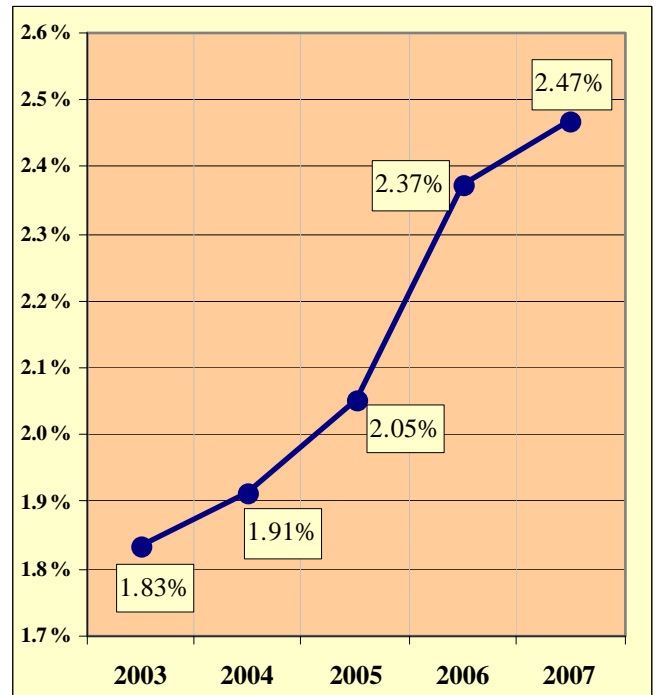


Chart 8 - 4

Percent of MC Crashes to All Crashes



## Section 8: – Motorcycle (MC) Crashes

Table 8 - 1

### MC Crashes by First Harmful Event

FHE Type	Incident Counts			
	Total	Fatal	Injury	PDO
Overturning	175	6	154	15
Collision with other Motor Vehicle	1,839	83	1,336	420
Collision with Pedestrian	12	1	10	1
Collision with Pedalcyclist	12	0	9	3
Collision with MV on other Rdway	0	0	0	0
Animal	30	1	27	2
Fixed Object	427	35	358	34
Object in Roadway	12	0	10	2
Other*	83	1	49	33
Miscellaneous**	874	5	770	99
<b>TOTAL</b>	<b>3,464</b>	<b>132</b>	<b>2,723</b>	<b>609</b>
*Includes Collision with Parked Vehicles, Trains, Machinery, and Unknown Objects				
**Includes Collision with Special Devices, Objects dropped from vehicles, Non-fixed Objects, as well as Vehicle Fires				

Table 8 - 2

### Lighting Conditions in MC Crashes

Type of Lighting Conditions	Incident Counts			
	Total	Fatal	Injury	PDO
Daylight	2,422	68	1,923	431
Dawn or Dusk	182	9	142	31
Darkness	848	55	647	146
Not Reported	12	0	11	1
<b>TOTAL</b>	<b>3,464</b>	<b>132</b>	<b>2,723</b>	<b>609</b>

Table 8 - 3

### Road Surface Conditions in MC Crashes

Type of Road Surface Condition	Incident Counts			
	Total	Fatal	Injury	PDO
Dry	3,205	125	2,519	14
Wet	70	1	52	561
Not Reported, No Unusual Condition	61	3	44	17
Sand, Mud, Dirt, Oil or Gravel	96	2	82	12
Snow	2	0	1	1
Slush	0	0	0	0
Ice	7	0	6	1
Other	18	1	14	3
Unknown	5	0	5	0
<b>TOTAL</b>	<b>3,464</b>	<b>132</b>	<b>2,723</b>	<b>609</b>

Table 8 - 4

**MC Crashes by Geographic Location**

Category	Total	Urban	% of Total	Rural	% of Total
<b>Total Crashes</b>	3,464	2,487	71.80%	977	28.20%
<b>Fatal Crashes</b>	132	73	55.30%	59	44.70%
<b>Injury Crashes</b>	2,723	1,932	70.95%	791	29.05%
<b>PDO Crashes</b>	609	482	79.15%	127	20.85%
<b>Persons Killed</b>	135	73	54.07%	62	45.93%
<b>Persons Injured</b>	2,929	2,043	69.75%	886	30.25%

Table 8 - 5

**Operator Involvement by Age in MC Crashes**

Operator Age Group	Operator Counts							
	Total	Percent of Total	Fatal	Percent of Fatal	Injury	Percent of Injury	PDO	Percent of PDO
<b>15 &amp; Under</b>	59	1.65%	1	0.69%	50	1.79%	8	1.28%
<b>16</b>	21	0.59%	0	0.00%	19	0.68%	2	0.32%
<b>17</b>	26	0.73%	0	0.00%	23	0.82%	3	0.48%
<b>18</b>	64	1.80%	1	0.69%	52	1.86%	11	1.76%
<b>19</b>	140	3.93%	11	7.64%	104	3.72%	25	4.00%
<b>20</b>	137	3.84%	3	2.08%	112	4.01%	22	3.52%
<b>21</b>	119	3.34%	4	2.78%	95	3.40%	20	3.20%
<b>22</b>	123	3.45%	3	2.08%	104	3.72%	16	2.56%
<b>23</b>	100	2.81%	3	2.08%	78	2.79%	19	3.04%
<b>24</b>	96	2.69%	6	4.17%	68	2.43%	22	3.52%
<b>25-34</b>	687	19.27%	19	13.19%	569	20.35%	99	15.84%
<b>35-44</b>	627	17.59%	24	16.67%	504	18.03%	99	15.84%
<b>45-54</b>	716	20.08%	43	29.86%	547	19.56%	126	20.16%
<b>55-64</b>	389	10.91%	15	10.42%	313	11.19%	61	9.76%
<b>65-74</b>	108	3.03%	10	6.94%	81	2.90%	17	2.72%
<b>75 &amp; Older</b>	34	0.95%	1	0.69%	28	1.00%	5	0.80%
<b>Not Stated</b>	119	3.34%	0	0.00%	49	1.75%	70	11.20%
<b>TOTAL</b>	<b>3,565</b>	<b>100.00%</b>	<b>144</b>	<b>100.00%</b>	<b>2,796</b>	<b>100.00%</b>	<b>625</b>	<b>100.00%</b>

Table 8 - 6

**MC Operator Physical Condition**

Type of Condition	Operator Counts							
	Total	Percent of Total Drivers	Fatal	Percent of Fatal Drivers	Injury	Percent of Injury Drivers	PDO	Percent of PDO Drivers
<b>No Apparent Influence</b>	2,932	82.24%	65	45.14%	2,343	83.80%	524	83.84%
<b>Had Been Drinking</b>	221	6.20%	36	25.00%	170	6.08%	15	2.40%
<b>Appeared to be Under Influence of Drugs*</b>	9	0.25%	6	4.17%	3	0.11%	0	0.00%
<b>Ill-Ability Influenced</b>	2	0.06%	0	0.00%	2	0.07%	0	0.00%
<b>Sleepy-Fatigued</b>	7	0.20%	0	0.00%	6	0.21%	1	0.16%
<b>Physical Impairment</b>	2	0.06%	0	0.00%	2	0.07%	0	0.00%
<b>Prescription Drugs</b>	2	0.06%	0	0.00%	2	0.07%	0	0.00%
<b>Other</b>	44	1.23%	4	2.78%	31	1.11%	9	1.44%
<b>Unknown</b>	287	8.05%	33	22.92%	195	6.97%	59	9.44%
<b>Not Reported</b>	59	1.65%	0	0.00%	42	1.50%	17	2.72%
<b>TOTAL</b>	<b>3,565</b>	<b>100.00%</b>	<b>144</b>	<b>100.00%</b>	<b>2,796</b>	<b>100.00%</b>	<b>625</b>	<b>100.00%</b>

\*Illegal drugs or narcotics

Table 8 - 7

**MC Operators Involved in Fatal Crashes by License Status**

License Status	2005		2006		2007	
	Operator Counts	Percent of Total	Operator Counts	Percent of Total	Operator Counts	Percent of Total
No license	5	3.23%	4	2.38%	7	4.52%
Invalid	38	24.52%	39	23.21%	41	26.45%
Valid	112	72.26%	120	71.43%	105	67.74%
Unknown	0	0.00%	5	2.98%	2	1.29%
<b>TOTALS</b>	<b>155</b>	<b>100.00%</b>	<b>168</b>	<b>100.00%</b>	<b>155</b>	<b>100.00%</b>
<b>Note:</b> Includes only motorcycle operators involved in fatal crashes.						
<b>Source:</b> FARS Data Queries						

Table 8 - 8

**MC Operator’s Helmet Use**

Severity of Injury	Helmet Used	Percent of Total	Helmet Not Used	Percent of Total	Unknown	Percent of Total	Total	Percent of Total
No Injury	256	18.31%	211	15.64%	189	23.11%	656	18.40%
Unknown Injury	10	0.72%	12	0.89%	71	8.68%	93	2.61%
Possible Injury	231	16.52%	167	12.38%	131	16.01%	529	14.84%
Non-Incapacitating Injury	543	38.84%	552	40.92%	274	33.50%	1,369	38.40%
Incapacitating Injury	303	21.67%	347	25.72%	141	17.24%	791	22.19%
Fatal Injury	55	3.93%	60	4.45%	12	1.47%	127	3.56%
<b>TOTALS</b>	<b>1,398</b>	<b>100.00%</b>	<b>1,349</b>	<b>100.00%</b>	<b>818</b>	<b>100.00%</b>	<b>3,565</b>	<b>100.00%</b>

Table 8 - 9

**MC Passenger’s Helmet Use**

Severity of Injury	Helmet Used	Percent of Total	Helmet Not Used	Percent of Total	Unknown	Percent of Total	Total	Percent of Total
No Injury	10	11.36%	17	11.04%	22	35.48%	49	16.12%
Unknown Injury	0	0.00%	3	1.95%	4	6.45%	7	2.30%
Possible Injury	15	17.05%	24	15.58%	12	19.35%	51	16.78%
Non-Incapacitating Injury	46	52.27%	55	35.71%	14	22.58%	115	37.83%
Incapacitating Injury	14	15.91%	50	32.47%	10	16.13%	74	24.34%
Fatal Injury	3	3.41%	5	3.25%	0	0.00%	8	2.63%
<b>TOTALS</b>	<b>88</b>	<b>100.00%</b>	<b>154</b>	<b>100.00%</b>	<b>62</b>	<b>100.00%</b>	<b>304</b>	<b>100.00%</b>

Table 8 - 10

**MC Operators and Passengers Killed and Injured**

Age of Victim	Persons Killed			Persons Injured			
	Total	Male	Female	Total	Male	Female	Gender Unknown
0-4	0	0	0	6	4	2	0
5-9	0	0	0	16	9	7	0
10-14	0	0	0	51	38	13	0
15-19	12	12	0	242	202	40	0
20-24	18	17	1	471	427	44	0
25-34	20	19	1	574	521	53	0
35-44	25	19	6	519	435	84	0
45-54	36	30	6	573	481	92	0
55-64	13	12	1	323	279	44	0
65-74	10	10	0	82	76	6	0
75 & Older	1	1	0	26	22	4	0
Not Stated	0	0	0	46	31	13	2
<b>TOTAL</b>	<b>135</b>	<b>120</b>	<b>15</b>	<b>2,929</b>	<b>2,525</b>	<b>402</b>	<b>2</b>

Table 8 - 11

**MC Operator Errors**

Type of Violation or Behavior	Operator Counts							
	Total	Percent of Total Operators	Fatal	Percent of Fatal Operators	Injury	Percent of Injury Operators	PDO	Percent of PDO Operators
No Improper Driving	1,464	41.07%	55	38.19%	1,100	39.34%	309	49.44%
Speeding*	1,001	28.08%	41	28.47%	843	30.15%	117	18.72%
Exceeded Lawful Speed	46	1.29%	7	4.86%	35	1.25%	4	0.64%
Failed to Yield Right-Of-Way	87	2.44%	0	0.00%	63	2.25%	24	3.84%
Followed Too Closely	67	1.88%	0	0.00%	49	1.75%	18	2.88%
Ran Stop Sign	11	0.31%	1	0.69%	6	0.21%	4	0.64%
Disregarded Traffic Signal	19	0.53%	0	0.00%	19	0.68%	0	0.00%
Made Improper Turn	30	0.84%	1	0.69%	22	0.79%	7	1.12%
Drove in Opposing Lane	21	0.59%	4	2.78%	15	0.54%	2	0.32%
Operated with Faulty Equipment	16	0.45%	3	2.08%	12	0.43%	1	0.16%
Required Motorcycle Safety Equipment Not Used	15	0.42%	2	1.39%	13	0.46%	0	0.00%
Passed in No-Passing Zone	4	0.11%	0	0.00%	4	0.14%	0	0.00%
Unsafe Lane Change	54	1.51%	2	1.39%	41	1.47%	11	1.76%
Other Unsafe Passing	27	0.76%	1	0.69%	19	0.68%	7	1.12%
Inattention	205	5.75%	5	3.47%	157	5.62%	43	6.88%
Other	212	5.95%	0	0.00%	174	6.22%	38	6.08%
Unknown	286	8.02%	22	15.28%	224	8.01%	40	6.40%
<b>TOTAL</b>	<b>3,565</b>	<b>100%</b>	<b>144</b>	<b>100%</b>	<b>2,796</b>	<b>100%</b>	<b>625</b>	<b>100%</b>

\*Driving too fast for conditions

Section 8: – Motorcycle (MC) Crashes

Chart 8 - 5

All MC Crashes vs. Fatal MC Crashes by Time of Day - Weekdays

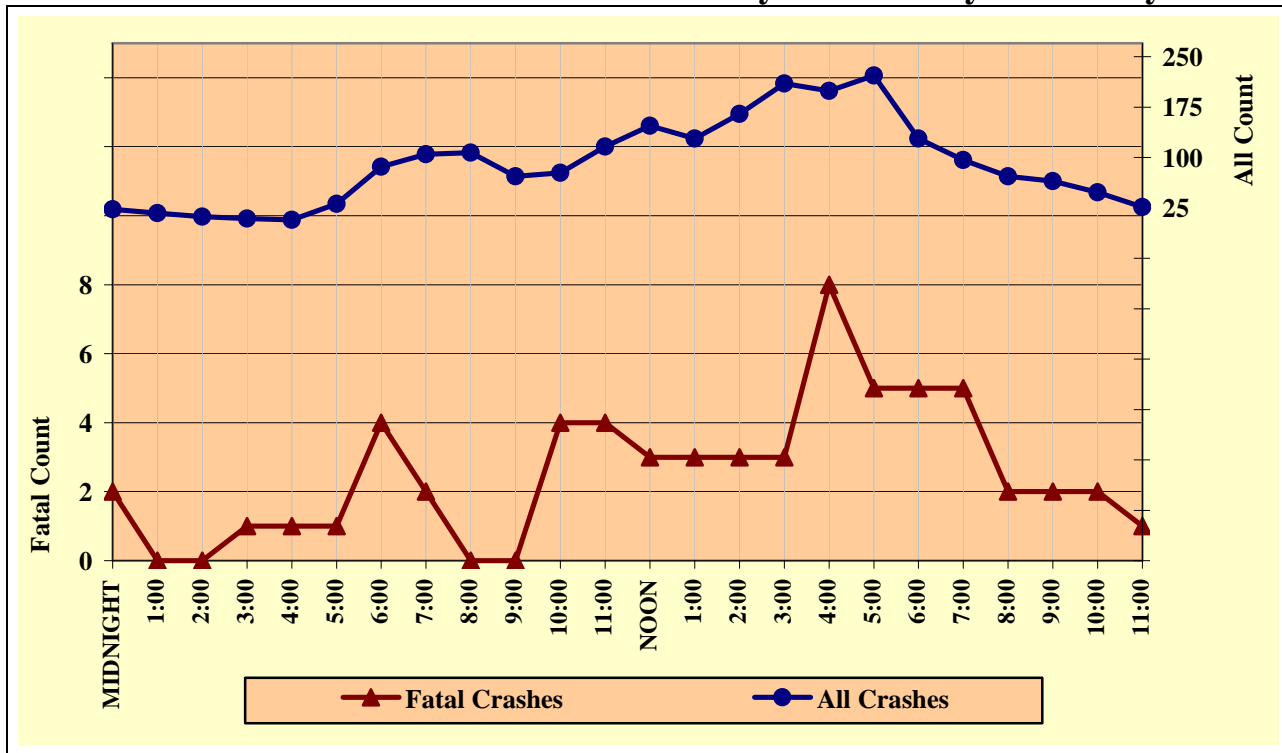


Chart 8 - 6

All MC Crashes vs. Fatal MC Crashes by Time of Day - Weekends

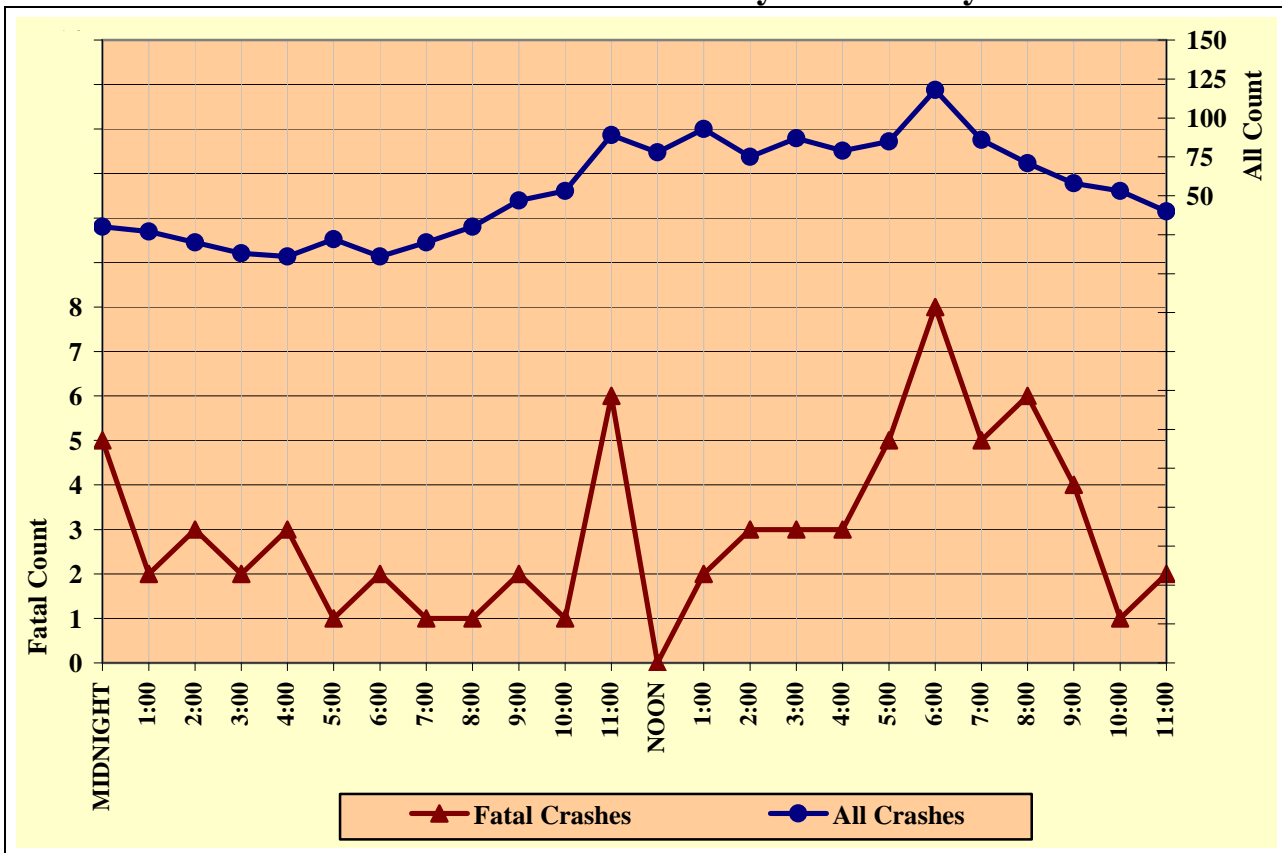


Chart 8 - 7

All MC Crashes vs. Fatal MC Crashes by Day of Week

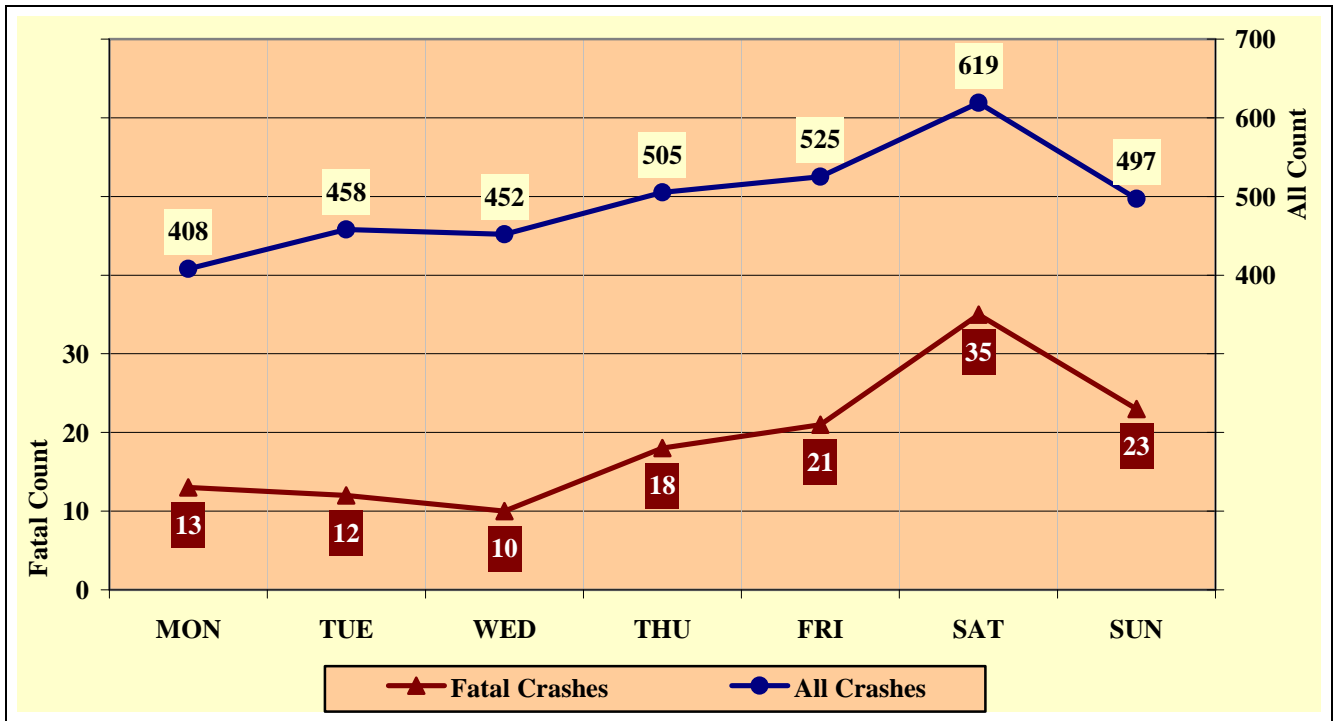
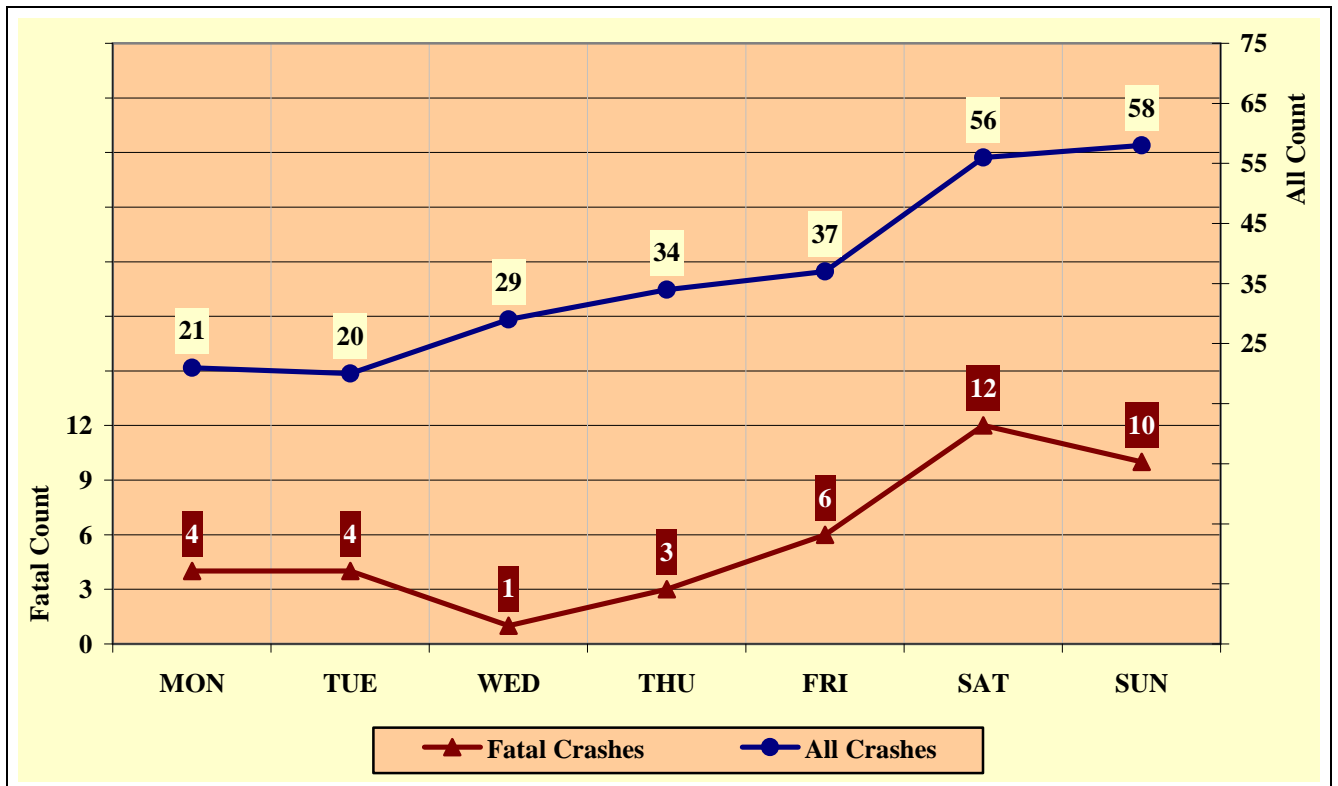


Chart 8 - 8

Alcohol Related MC Crashes vs. Fatal Alcohol Related MC Crashes by Day of Week



Section 8: – Motorcycle (MC) Crashes

Table 8 - 12

MC Crashes by Hour and Day of Week

Hour Beginning	Total Crashes		Monday		Tuesday		Wednesday		Thursday		Friday		Saturday		Sunday		Weekdays		Weekends	
	All	Fatal	All	Fatal	All	Fatal	All	Fatal	All	Fatal	All	Fatal	All	Fatal	All	Fatal	All	Fatal	All	Fatal
MIDNIGHT	53	7	4	0	5	1	3	0	10	1	5	0	15	2	11	3	23	2	30	5
1:00	44	2	6	0	0	0	4	0	7	0	6	0	8	1	13	1	17	0	27	2
2:00	32	3	3	2	3	0	2	0	4	0	3	0	10	1	7	0	12	0	20	3
3:00	22	3	1	0	1	1	2	0	1	0	5	0	9	2	3	0	9	1	13	2
4:00	18	4	4	1	0	0	2	1	2	0	3	0	4	1	3	1	7	1	11	3
5:00	53	2	9	0	8	0	8	0	7	0	8	1	5	0	8	1	31	1	22	1
6:00	97	6	13	0	18	0	21	0	23	3	11	1	7	1	4	1	86	4	11	2
7:00	125	3	19	0	20	0	28	1	28	1	10	0	9	1	11	0	105	2	20	1
8:00	137	1	25	0	16	0	18	0	22	0	26	0	16	0	14	1	107	0	30	1
9:00	119	2	15	0	8	0	12	0	18	0	19	0	19	0	28	2	72	0	47	2
10:00	130	5	10	0	18	1	15	1	22	1	12	1	28	0	25	1	77	4	53	1
11:00	205	10	25	2	20	0	24	1	28	1	19	0	50	4	39	2	116	4	89	6
NOON	225	3	25	0	27	0	31	1	32	1	32	1	43	0	35	0	147	3	78	0
1:00	221	5	25	1	33	1	17	1	26	0	27	0	52	2	41	0	128	3	93	2
2:00	240	6	30	0	25	0	28	0	33	1	49	2	48	3	27	0	165	3	75	3
3:00	297	6	32	1	46	1	33	0	45	0	54	1	47	1	40	2	210	3	87	3
4:00	278	11	34	2	46	2	35	0	36	2	48	2	47	2	32	1	199	8	79	3
5:00	307	10	36	0	43	1	56	1	52	1	35	2	55	3	30	2	222	5	85	5
6:00	246	13	27	2	36	1	35	1	30	1	44	4	41	4	33	0	128	5	118	8
7:00	182	10	24	1	20	1	23	1	29	2	26	2	31	3	29	0	96	5	86	5
8:00	143	8	15	0	24	0	19	1	14	1	26	2	21	2	24	2	72	2	71	6
9:00	123	6	15	0	22	2	15	0	13	0	22	0	20	1	16	3	65	2	58	4
10:00	101	3	7	0	12	0	13	0	16	2	20	0	21	1	12	0	48	2	53	1
11:00	66	3	4	1	7	0	8	0	7	0	15	2	13	0	12	0	26	1	40	2
<b>TOTAL</b>	<b>3,464</b>	<b>132</b>	<b>408</b>	<b>13</b>	<b>458</b>	<b>12</b>	<b>452</b>	<b>10</b>	<b>505</b>	<b>18</b>	<b>525</b>	<b>21</b>	<b>619</b>	<b>35</b>	<b>497</b>	<b>23</b>	<b>2,168</b>	<b>61</b>	<b>1,296</b>	<b>71</b>

Crashes during Weekends accounted for 37.41% of all MC crashes and 53.79% of Fatal MC Crashes.

Crashes during Weekdays accounted for 62.59% of all MC crashes and 46.21% of Fatal MC Crashes.



---

## Acknowledgements

Special gratitude to our other providers of data and information including:

*The National Center for Statistics and Analysis, Research and Development*

*National Highway Transportation Safety Administration*

*The Arizona State Data Center, Arizona Department of Economic Security*

*The Office of Planning, Evaluation, and Public Health Statistics, Arizona  
Department of Health Services*

*The Information Technology Group, Arizona Department of Transportation*

*The National Safety Council*