

# 2002 Motor Vehicle Crash Facts for Arizona

*Prepared by the:  
Motor Vehicle Crash Statistics Unit  
Traffic Records Section*

*Jim Williams, Manager  
Philip A. Scandura Sr., Senior Analyst  
Nancy Ann Crandall, Analyst  
Laura Bunch, Analyst  
Judy Ormond, Analyst*



This publication is a statistical review of the motor vehicle crashes in the State of Arizona for calendar year 2002. The results are compiled from Arizona Traffic Accident Reports submitted to the Arizona Department of Transportation by state, county, city, tribal, and other law enforcement agencies.

Specific inquiries regarding the data in this report or requests for additional copies should be directed to:

**The Arizona Department of Transportation  
Traffic Engineering Group  
Traffic Records Section  
2828 N. Central Avenue, Suite 880  
Phoenix, AZ 85004**

**(602) 712-6968 or (602) 712-6687**

Motor Vehicle Crash Facts is an annual report published by the Traffic Engineering Group of the Arizona Department of Transportation. In order to provide the most current information, preliminary data is utilized when necessary. For this reason, previous or future reports may differ slightly and we encourage you to refer to the latest issue of Motor Vehicle Crash Facts.

Previous issues of this publication may be viewed and downloaded from ADOT's Web Site at

<http://www.dot.state.az.us>

For further information or questions, please E-Mail

[azcrashfacts@dot.state.az.us](mailto:azcrashfacts@dot.state.az.us)

**The  
Arizona Department of Transportation**

**Janet Napolitano**  
Governor

**Victor Mendez**  
Director

**State Transportation Board**

**Ingo Radicke – District 4**  
Chairman

**William B. Jeffers, Jr. – District 5**  
Vice Chairman

Members

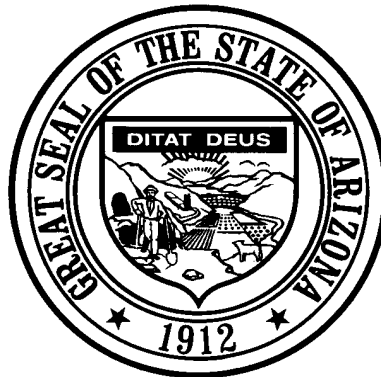
**Dallas “Rusty” Gant – District 1**

**Richard Hileman – District 6**

**James W. Martin – District 3**

**Joe Lane – District 1**

**S.L. Schorr – District 2**

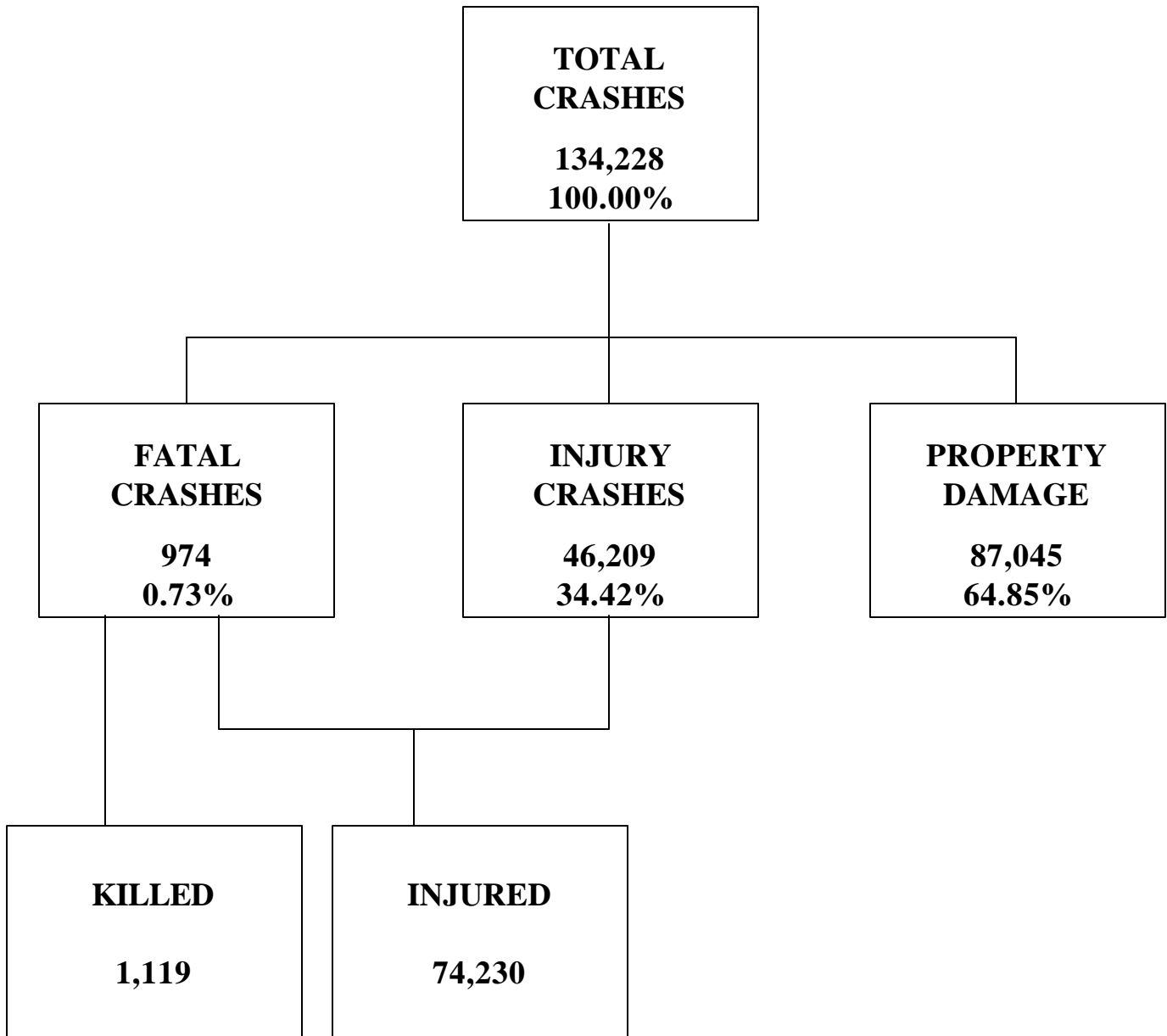


# TABLE OF CONTENTS

<b>Section 1: Highlights and Historical Trends.....</b>	<b>1</b>
Total crashes, historical data, economic loss, victim demographics, vehicle miles traveled, fatality rates, land use, holiday deaths.	
<b>Section 2: Geographic Location.....</b>	<b>9</b>
Urban and rural crashes, crashes by counties and cities.	
<b>Section 3: Crash Descriptions.....</b>	<b>16</b>
Single vehicle and multi-vehicle, lighting, road surface, weather, road grade, time, day, and month.	
<b>Section 4: Safety Devices.....</b>	<b>25</b>
Use of safety devices by drivers and passengers, child restraint, seat positions. (For helmet use, see Section 8: Motorcycle Crashes)	
<b>Section 5: Motor Vehicle and Driver Characteristics.....</b>	<b>29</b>
Crashes by vehicle type, hit and run crashes, motor vehicle registration, licensed drivers by age, killed and injured by vehicle type, gender of drivers, residence and age of drivers, driver errors and physical condition.	
<b>Section 6: Alcohol-Related Crashes.....</b>	<b>34</b>
Alcohol-related crashes by severity and manner of collision, first harmful event, vehicle type, light conditions, single and multi-vehicle crashes, age, gender, safety devices, daytime, weekday, and weekend crashes, pedestrian involvement, month, time, and day of week.	
<b>Section 7: Pedestrian and Pedalcyclists.....</b>	<b>43</b>
Severity of injury, age, gender, history, victims' actions, physical condition, lighting, and weather conditions.	
<b>Section 8: Motorcycle Crashes.....</b>	<b>49</b>
Severity of injury, fatalities, and motorcycle registrations, fatality rate, accident type, lighting conditions, road surface, urban and rural, valid licenses, operators' age, license status, operator and passenger helmet usage, victims ages, gender, operator errors, time, weekday, weekend, and month.	
<b>Section 9: School Bus Crashes.....</b>	<b>59</b>
History, driver errors, injuries, fatalities, time of day, weather conditions and vehicles involved.	
<b>Acknowledgements.....</b>	<b>61</b>

## Section 1:

### Highlights and Historical Trends



## Section 1: Highlights and Historical Trends

**Table 1-1  
Arizona Crash Facts**

Category	2001	2002	Pct Change
Reported crashes	131,899	134,228	+2.02%
Total killed	1,052	1,119	+6.88%
Total injured	74,110	74,230	+0.36%
Pedestrians killed	166	158	-4.82%
Pedestrians injured	1,506	1,481	-1.66%
Motorcyclists killed	77	95	+23.34%
Motorcyclists injured	1,925	1,999	+3.84%
Pedalcyclists killed	29	15	-48.28%
Pedalcyclists injured	1,710	1,618	-5.38%
Millions of vehicle miles traveled (VMT)	50,861	53,404	+5.00%
Deaths per 100 million VMT	2.07	2.09	+1.46%
Injuries per 100 million VMT	145.29	139.00	-4.33%

### 2002 At a Glance

- ⇒ Approximately **3.1** persons were killed each day.
- ⇒ One person was killed every **7.8** hours.
- ⇒ There were **203** persons injured every day.
- ⇒ One person was injured every **7.1** minutes.
- ⇒ Drinking drivers were involved in **6.03%** of all crashes.
- ⇒ Drinking drivers were involved in **25.46%** of all fatalities.
- ⇒ Over **80.5%** of all drinking drivers involved in crashes were males.
- ⇒ Rural crashes accounted for **19.9%** of all crashes, and over **53.5%** of all fatal crashes.
- ⇒ **71.4%** of all crashes occurred during daylight.
- ⇒ Motor vehicle crashes resulted in **\$3.01** billion in economic losses to Arizona.
- ⇒ Motor vehicle crashes killed **59** children and injured **6,984** children through age 14.

**The Nation In 2002**

An estimated **42,850** persons were killed in motor vehicle crashes in the United States.

An estimated **2,914,000** persons were injured.

There were an estimated **6,279,356** crashes.

The population of the United States was estimated at **288,368,698**.

Estimated vehicle miles traveled totaled **2,829 billion** miles.

**Table 1-2  
Arizona Licensed Drivers, Motor Vehicle Registration  
and Crash History**

Calendar Year	Total Crashes	Fatal Crashes	Injury Crashes	Property Damage Crashes	Total Persons Killed	Total Persons Injured	Total Licensed Drivers	Total Registered Vehicles
1998	120,293	858	43,348	76,087	980	70,828	3,598,325	3,683,891
1999	125,764	907	45,541	79,316	1,024	73,514	3,372,187	3,731,126
2000	131,368	891	47,485	82,992	1,036	76,626	3,529,732	3,983,860
2001	131,899	939	46,234	84,726	1,052	74,110	3,550,766	4,037,359
2002	134,228	974	46,209	87,045	1,119	74,230	3,668,704	4,089,662

**Table 1-3  
Historical Trends  
Arizona and the United States**

Calendar Year	U.S. Fatality Rate*	Arizona Fatality Rate*	Arizona Traffic Deaths	Estimated Motor Vehicle Miles Traveled*	AZ Fatal Crash Rate*
1998	1.58	2.15	980	45,485	1.89
1999	1.55	2.18	1,024	47,014	1.90
2000	1.55	2.08	1,036	48,568	1.83
2001	1.50	2.07	1,052	50,861	1.84
2002	1.51	2.09	1,119	53,404	1.82

\*vehicle miles traveled are shown per million miles and rates per 100 million miles

Due to refinements in the method used for the calculation of vehicle miles traveled and the use of preliminary data in some cases, the Arizona crash and fatality rates may differ slightly from previous reports. The most current data is always used at the time of publication, but it may change as new information is received.

## Section 1: Highlights and Historical Trends

*During 2002, an average of 117 persons died each day in motor vehicle crashes across the United States - one every 12.3 minutes.*

### Statewide Economic Loss Due to Motor Vehicle Crashes

*In 2002, the economic impact of motor vehicle crashes was \$549.18 for every man, woman, and child in the state of Arizona.*

Fatalities	\$ 1,219,710,000.
Injuries	1,246,170,400.
Property Damage Only	539,679,000.
<b>TOTAL.</b>	<b>\$3,005,559,400.</b>

**Table 1-4**  
**Estimated Economic Loss by County**

Counties	Cost of Traffic Crashes			Total
	Fatalities	Injuries	PDOs	
Apache	\$40,330,000.	\$8,825,900.	\$3,416,200.	\$52,572,100.
Cochise	32,700,000.	18,523,900.	9,424,000.	60,647,900.
Coconino	62,130,000.	32,992,700.	19,604,400.	114,727,100.
Gila	23,980,000.	11,093,100.	4,333,800.	39,406,900.
Graham	7,630,000.	4,009,400.	1,171,800.	12,811,200.
Greenlee	2,180,000.	547,200.	241,800.	2,969,000.
La Paz	27,250,000.	8,721,900.	2,256,800.	38,228,700.
Maricopa	533,010,000.	776,626,900.	351,143,200.	1,660,780,100.
Mohave	66,490,000.	38,915,300.	12,071,400.	117,476,700.
Navajo	49,050,000.	17,554,400.	6,187,600.	72,792,000.
Pima	176,580,000.	209,764,600.	86,601,600.	472,946,200.
Pinal	88,290,000.	38,713,400.	14,179,400.	141,182,800.
Santa Cruz	5,450,000.	4,062,800.	2,697,000.	12,209,800.
Yavapai	59,950,000.	33,987,900.	16,368,000.	110,305,900.
Yuma	44,690,000.	41,831,000.	9,982,000.	96,503,000.
<b>TOTALS</b>	<b>\$1,219,710,000.</b>	<b>1,246,170,400.</b>	<b>539,679,000.</b>	<b>\$3,005,559,400.</b>

Cost estimates are based on the 2002 National Safety Council estimates of the average cost of motor vehicle crashes, deaths and injuries. These costs are an estimate of wage and productivity losses, medical expenses, administrative expenses, motor vehicle damage, and employer costs. Effective in 1993, new components were added and new benchmarks and inflation factors adopted. For this reason, the cost estimates for 2002 are not comparable to those published prior to 1993. The following factors were used to approximate the value of the loss for crashes occurring in Arizona.

1.	Fatality	\$1,090,000.
2.	Incapacitating Injury	52,100.
3.	Non-incapacitating Injury	17,200.
4.	Possible Injury	9,800.
5.	Property Damage Only	6,200.

## Traffic Crashes in Arizona by Year

Figure 1-1: All Crashes

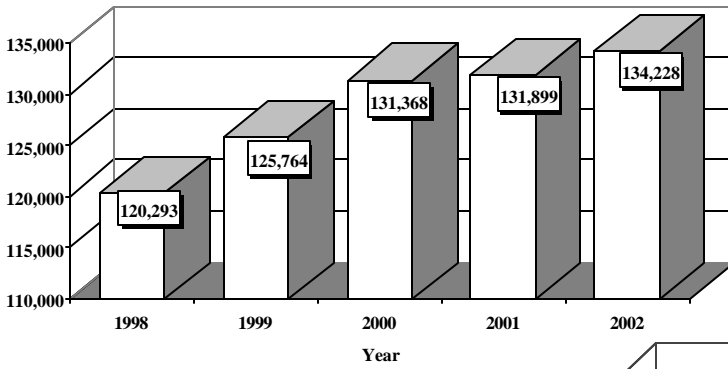


Figure 1-3: Injury Crashes

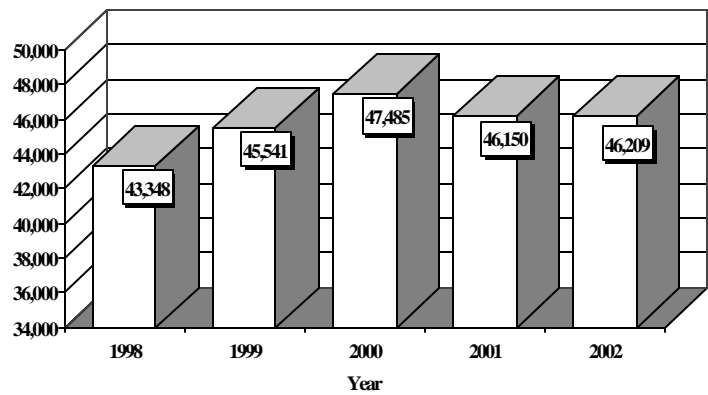


Figure 1-2: Fatal Crashes

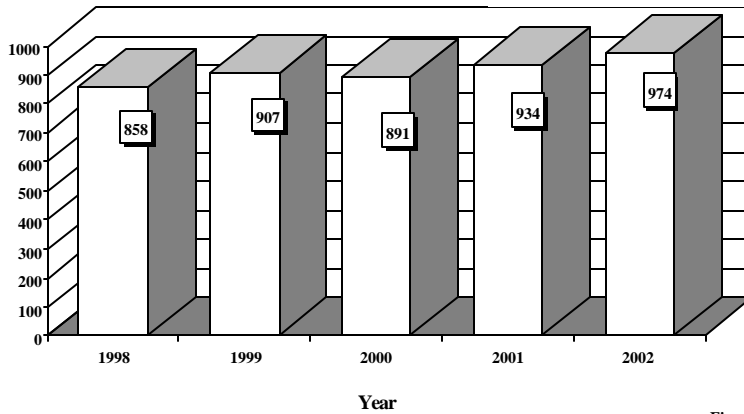
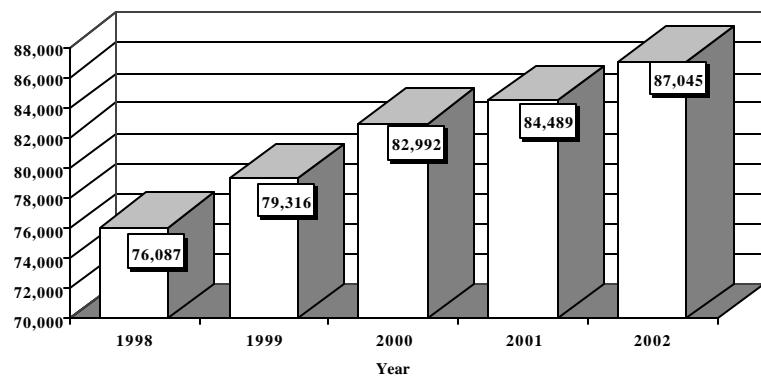


Figure 1-4: Property Damage Only Crashes





Section 1: Highlights and Historical Trends

**Table 1-5**  
**Victims of Motor Vehicle Crashes\***

Age of Victim	Total Killed			Total Injured			Sex Unk.
	Male	Female		Male	Female		
0 - 4	16	11	5	1,856	914	937	5
5 - 9	12	5	7	2,282	1,142	1,134	6
10 - 14	31	16	15	2,846	1,413	1,407	26
15 - 19	116	79	37	10,587	4,869	5,704	14
20 - 24	139	104	35	10,527	5,366	5,152	9
25 - 34	181	134	47	14,146	7,136	6,997	13
35 - 44	176	126	50	11,371	5,527	5,833	11
45 - 54	168	120	48	8,732	4,167	4,560	5
55 - 64	93	58	35	5,143	2,323	2,818	2
65 - 74	83	47	36	2,830	1,261	1,569	0
75 & Older	102	51	51	1,295	1,051	1,691	19
Age Unknown	2	1	1	2,615	782	342	25
<b>Totals</b>	<b>1,119</b>	<b>752</b>	<b>367</b>	<b>74,230</b>	<b>35,951</b>	<b>38,144</b>	<b>135</b>

\*Includes all reported injuries and fatalities occurring on Arizona roadways.

Arizona's Estimated Population			
	Population Percentage	Traffic Crash Fatality Percentage	Population Estimate
White	71.61%	53.93%	3,919,036
Hispanic	18.77%	25.72%	1,027,235
African American	2.86%	2.09%	156,521
Native American	5.18%	17.34%	283,488
Asian	1.41%	0.79%	77,165
Other	0.17%	0.09%	9,304
<b>2002 population 5,472,750</b>			

Sources: Arizona State Data Center, Arizona Department of Economic Security and The Arizona Department of Health Services, Office of Planning, Evaluation and Public Health Statistics. Population ratios are based on 2000 U.S. Census Data.

**Table 1-6**  
**Victims of Motor Vehicle Crashes (Arizona Residents Only)\*\*\***

Age of Victim	Total Killed	Total		Ethnicity				Native American
		Male	Female	White	Hispanic	African American	Asian	
Less than 1	4	2	2	0	3	0	0	1
1-14	55	30	25	12	19	2	0	22
15-19	110	76	34	43	39	4	0	24
20-44	433	317	116	197	132	11	2	90
45-64	234	162	72	150	45	3	4	32
65+	167	97	70	139	20	1	2	5
Unknown								
<b>Total</b>	<b>1,003</b>	<b>684</b>	<b>319</b>	<b>541</b>	<b>258</b>	<b>21</b>	<b>8</b>	<b>174</b>

Source: The Arizona Department of Health Services, Office of Planning, Evaluation and Public Health Statistics

\*\*\*includes victims of crashes occurring outside Arizona.

Figure 1-5, Vehicle Miles Traveled

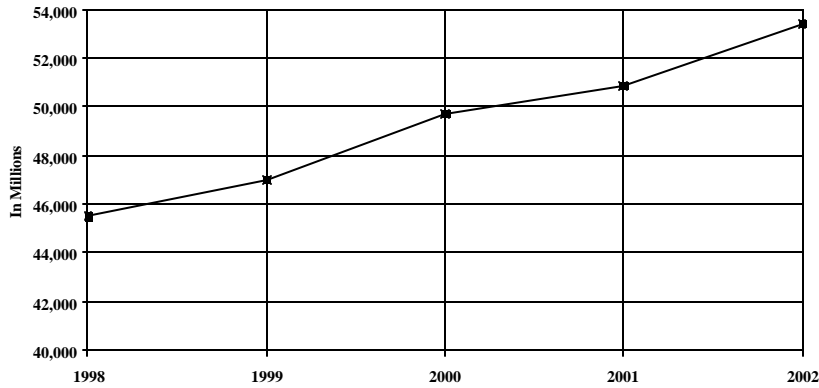


Figure 1-6, Arizona versus U.S. Fatality Rate

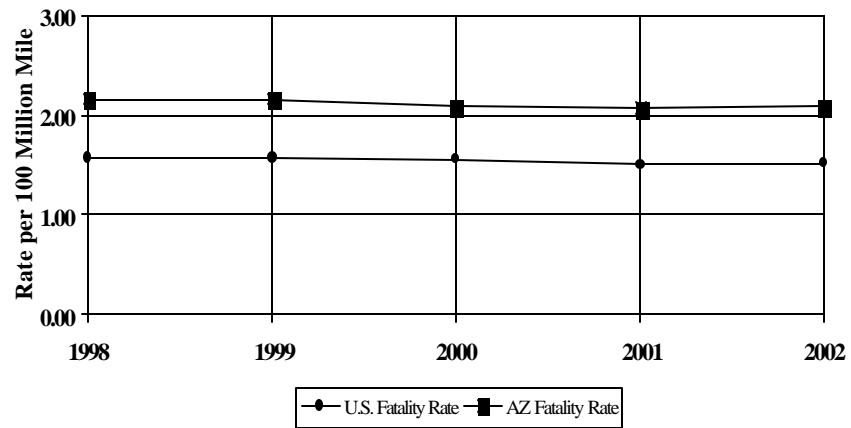


Figure 1-7, Traffic Fatalities by Land Use

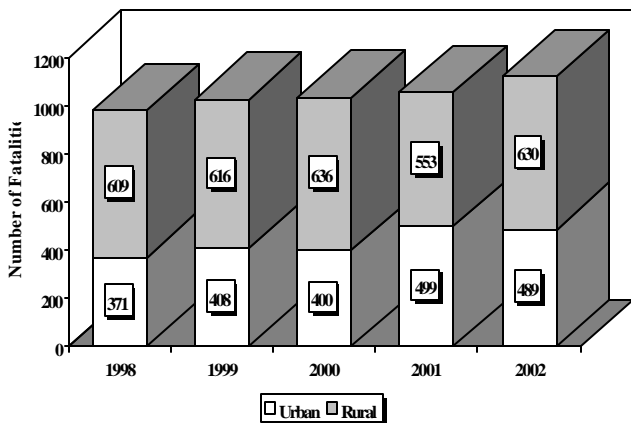
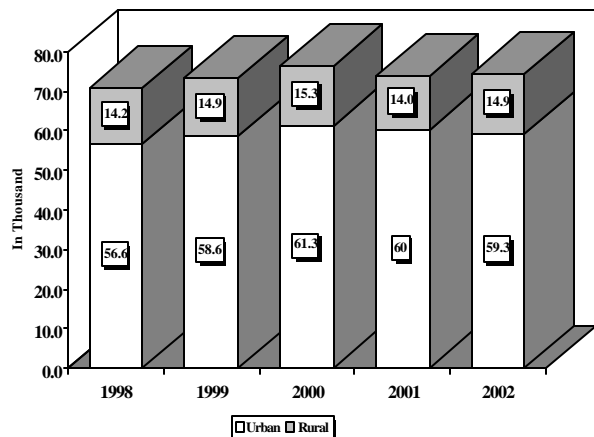


Figure 1-8, Traffic Injuries by and Use



## Section 1: Highlights and Historical Trends

### Table 1-7 Holiday Crash Statistics

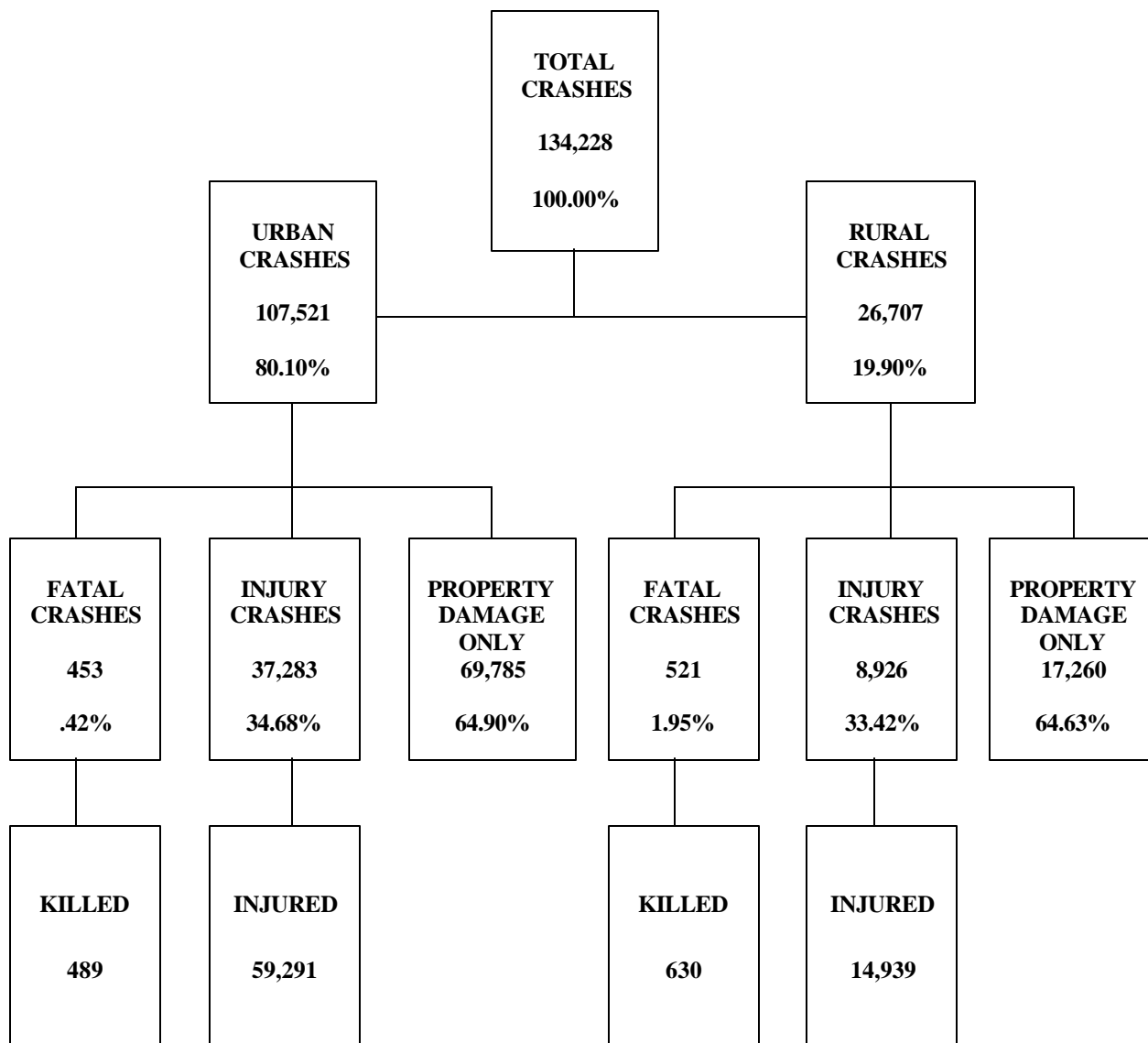
Holidays such as Memorial Day, Labor Day, and Thanksgiving are regarded as a 3 or 4 day weekend holiday for statistical purposes. Holidays such as Christmas, New Years, and the Fourth of July are celebrated on specific dates; which also make the holiday period range from two to five days in length.

Holiday fatality statistics are based on fatal crashes occurring between 6:00 p.m. on the last working day prior to the holiday and 5:59 a.m. the day following the holiday period. Example: Thanksgiving fatalities are counted from Wednesday evening at 6:00 p.m. through 5:59 a.m. of the following Monday.

2000 Holidays	Beginning at 6 p.m.	Ending at 5:59 a.m.	Number of Days	Fatal Crashes	Persons Killed	Alcohol-Related Crashes	Alcohol-Related Fatalities
<b>New Years</b>	Monday 12/31/01	Wednesday 1/2/02	2	9	9	1	1
<b>Memorial Day</b>	Friday 5/24/02	Tuesday 5/28/02	4	7	11	4	5
<b>July 4th</b>	Wednesday 7/03/02	Friday 7/5/02	2	14	18	2	2
<b>Labor Day</b>	Friday 8/30/02	Tuesday 9/3/02	4	14	20	5	5
<b>Thanksgiving Day</b>	Wednesday 11/27/02	Monday 12/02/02	5	15	19	5	5
<b>Christmas</b>	Tuesday 12/24/02	Thursday 12/26/02	2	9	12	2	3

Fatal Crashes by Year	New Years	Memorial Day	July 4th	Labor Day	Thanks-giving	Christmas	Total
1998	10	10	6	3	13	10	52
1999	6	13	5	13	13	5	49
2000	10	11	17	16	19	10	80
2001	10	16	4	15	11	15	71
2002	9	7	14	14	15	9	68
Persons Killed	New Years	Memorial Day	July 4th	Labor Day	Thanks-Giving	Christmas	Total
1998	10	13	7	3	14	13	60
1999	7	16	7	13	14	9	58
2000	11	16	21	19	24	12	99
2001	13	18	4	15	14	15	79
2002	9	11	18	20	19	12	95
Number of Days	New Years	Memorial Day	July 4th	Labor Day	Thanks-giving	Christmas	Total
1998	4	3	3	3	4	3	20
1999	3	3	3	3	4	2	18
2000	3	3	4	3	4	3	20
2001	4	4	2	4	5	4	23
2002	2	4	2	4	5	2	19

## Section 2: Geographic Location



## Section 2: Geographic Location

**Tables 2-1, 2-2, and 2-3  
Severity by First Harmful Event Statewide**

Statewide	Number of Crashes				Number of Persons	
	Total	Fatal	Injury	PDO	Killed	Injured
Overturning	3,339	256	1,906	1,177	302	3,402
Other Non-Collision	4,350	22	456	3,872	23	582
Pedestrian	1,608	147	1,337	124	150	1,462
Motor Veh. In Transit	102,580	377	35,473	66,730	450	60,020
Motor Veh. Other Roadway	30	7	15	8	11	38
Pedalcyclist	1,893	15	1,610	268	15	1,652
Animal	1,791	2	216	1,573	3	314
Fixed Object	13,147	108	3,827	9,212	119	5,005
Other Object	47	0	9	38	0	13
Misc.	5,443	40	1,360	4,043	46	1,742
<b>TOTALS</b>	<b>134,228</b>	<b>974</b>	<b>46,209</b>	<b>87,045</b>	<b>1119</b>	<b>74,230</b>

**Severity by First Harmful Event in Urban Areas**

Urban	Number of Crashes				Number of Persons	
	Total	Fatal	Injury	PDO	Killed	Injured
Overturning	685	46	390	249	54	607
Other Non-Collision	3,677	9	369	3,299	10	456
Pedestrian	1,386	102	1,186	98	105	1,293
Motor Veh. In Transit	88,379	218	30,723	57,438	237	51,471
Motor Veh. Other Roadway	16	4	6	6	4	18
Pedalcyclist	1,720	13	1,467	240	13	1,508
Animal	223	0	26	197	0	36
Fixed Object	8,845	52	2,441	6,352	57	3,100
Other Object	16	0	3	13	0	4
Misc.	2,572	9	672	1,891	9	798
<b>TOTALS</b>	<b>107,519</b>	<b>453</b>	<b>37,283</b>	<b>69,783</b>	<b>489</b>	<b>59,291</b>

**Severity by First Harmful Event in Rural Areas**

Rural	Number of Crashes				Number of Persons	
	Total	Fatal	Injury	PDO	Killed	Injured
Overturning	2,654	210	1,516	928	248	2,795
Other Non-Collision	673	13	87	573	13	126
Pedestrian	222	45	151	26	45	169
Motor Veh. In Transit	14,201	159	4,750	9,292	213	8,549
Motor Veh. Other Roadway	14	3	9	2	7	20
Pedalcyclist	173	2	143	28	2	144
Animal	1,568	2	190	1,376	3	278
Fixed Object	4,302	56	1,386	2,860	62	1,905
Other Object	31	0	6	25	0	9
Misc.	2,871	31	688	2,152	37	944
<b>TOTALS</b>	<b>26,709</b>	<b>521</b>	<b>8,926</b>	<b>17,262</b>	<b>630</b>	<b>14,939</b>

**Table 2-4**  
**Crashes by County**

County	Number of Crashes				Number of Persons	
	Total	Fatal	Injury	PDOs	Fatalities	Injuries
Apache	852	33	268	551	37	496
Cochise	2,153	29	604	1,520	30	1,002
Coconino	4,373	48	1,163	3,162	57	1,916
Gila	1,059	16	344	699	22	552
Graham	318	4	125	189	7	223
Greenlee	61	2	20	39	2	28
La Paz	590	20	206	364	25	352
Maricopa	87,606	441	30,529	56,636	489	48,955
Mohave	3,118	45	1,126	1,947	61	1,827
Navajo	1,516	42	476	998	45	860
Pima	21,854	135	7,751	13,968	162	12,232
Pinal	3,546	68	1,191	2,287	81	1,974
Santa Cruz	592	5	152	435	5	225
Yavapai	3,886	51	1,195	2,640	55	1,818
Yuma	2,704	35	1,059	1,610	41	1,770
<b>Total</b>	<b>134,228</b>	<b>974</b>	<b>46,209</b>	<b>87,045</b>	<b>1119</b>	<b>74,230</b>

*While rural crashes in Arizona accounted for only 19.90% of all crashes, they were responsible for 53.50% of all fatal crashes occurring in 2002.*

**Table 2-5**  
**Analysis by Jurisdiction**

COUNTIES Cities	Total	Number of Crashes			No. of Persons		Alcohol-Related		
		Fatal	Injury	Property Damage	Killed	Injured	Crashes	Killed	Injured
<b>APACHE COUNTY</b>									
Eagar	47	0	12	35	0	21	3	0	1
St. Johns	37	0	10	27	0	24	3	0	8
Springerville	47	1	10	36	1	21	6	1	5
State Rural Roads	609	16	198	395	18	370	43	3	54
Other Rural Roads	112	16	38	58	18	60	15	3	22
<b>TOTAL</b>	<b>852</b>	<b>33</b>	<b>268</b>	<b>551</b>	<b>37</b>	<b>496</b>	<b>70</b>	<b>7</b>	<b>90</b>

## Section 2: Geographic Location

COUNTIES Cities	Total	Number of Crashes			No. of Persons		Alcohol-Related		
		Fatal	Injury	Property Damage	Killed	Injured	Crashes	Killed	Injured
<b>COCHISE COUNTY</b>									
Benson	101	0	24	77	0	35	5	0	2
Bisbee	53	1	17	35	1	26	3	0	2
Douglas	252	0	62	190	0	92	9	0	3
Huachuca City	13	0	3	10	0	3	0	0	0
Sierra Vista	747	0	206	541	0	309	25	0	17
Tombstone	14	1	2	11	1	3	2	1	0
Willcox	46	1	9	36	1	15	1	0	0
State Rural Roads	643	21	190	432	22	362	35	5	31
Other Rural Roads	284	5	91	188	5	157	25	2	14
<b>TOTAL</b>	<b>2,153</b>	<b>29</b>	<b>604</b>	<b>1,520</b>	<b>30</b>	<b>1,002</b>	<b>105</b>	<b>8</b>	<b>69</b>
<b>COCONINO COUNTY</b>									
Flagstaff	1,985	2	434	1,549	2	693	97	0	62
Fredonia	2	0	1	1	0	2	0	0	0
Page	113	1	36	76	1	61	10	0	10
Sedona	309	1	74	234	1	103	25	0	10
Williams	123	0	21	102	0	33	9	0	9
State Rural Roads	1,465	34	474	957	42	833	70	5	71
Other Rural Roads	376	10	123	243	11	191	32	1	32
<b>TOTAL</b>	<b>4,373</b>	<b>48</b>	<b>1,163</b>	<b>3,162</b>	<b>57</b>	<b>1,916</b>	<b>243</b>	<b>6</b>	<b>194</b>
<b>GILA COUNTY</b>									
Globe	192	1	64	127	1	111	12	0	8
Hayden	1	0	1	0	0	2	0	0	0
Miami	25	0	7	18	0	16	0	0	0
Payson	188	0	64	124	0	100	6	0	6
Winkelman	0	0	0	0	0	0	0	0	0
State Rural Roads	520	12	169	339	16	266	35	3	35
Other Rural Roads	133	3	39	91	5	57	15	1	9
<b>TOTAL</b>	<b>1,059</b>	<b>16</b>	<b>344</b>	<b>699</b>	<b>22</b>	<b>552</b>	<b>68</b>	<b>4</b>	<b>58</b>
<b>GRAHAM COUNTY</b>									
Pima	0	0	0	0	0	0	0	0	0
Safford	80	0	29	51	0	56	5	0	8
Thatcher	70	0	28	42	0	45	3	0	2
State Rural Roads	102	4	40	58	7	74	7	1	4
Other Rural Roads	66	0	28	38	0	48	11	0	11
<b>TOTAL</b>	<b>318</b>	<b>4</b>	<b>125</b>	<b>189</b>	<b>7</b>	<b>223</b>	<b>26</b>	<b>1</b>	<b>25</b>

## 2002 Arizona Crash Facts Summary

COUNTIES Cities	Total	Number of Crashes			No. of Persons		Alcohol-Related		
		Fatal	Injury	Property Damage	Killed	Injured	Crashes	Killed	Injured
<b>GREENLEE COUNTY</b>									
Clifton	2	1	0	1	1	1	0	0	0
Duncan	0	0	0	0	0	0	0	0	0
State Rural Roads	59	1	20	38	1	27	3	0	3
Other Rural Roads	0	0	0	0	0	0	0	0	0
<b>TOTAL</b>	<b>61</b>	<b>0</b>	<b>20</b>	<b>39</b>	<b>2</b>	<b>28</b>	<b>3</b>	<b>0</b>	<b>0</b>
<b>LA PAZ COUNTY</b>									
Parker	81	3	13	65	5	18	5	1	4
Quartzite	66	2	21	43	3	36	2	0	1
State Rural Roads	380	12	151	217	13	262	20	1	15
Other Rural Roads	63	3	21	39	4	36	14	3	13
<b>TOTAL</b>	<b>590</b>	<b>20</b>	<b>206</b>	<b>364</b>	<b>25</b>	<b>352</b>	<b>41</b>	<b>5</b>	<b>33</b>
<b>MARICOPA COUNTY</b>									
Avondale	815	4	236	575	4	377	37	2	35
Buckeye	219	3	82	134	4	140	11	1	18
Carefree	45	2	16	27	2	21	6	1	4
Cave Creek	71	0	20	51	0	24	5	0	3
Chandler	4,303	13	1,266	3,024	13	1,954	241	3	151
El Mirage	155	3	41	111	3	60	7	1	5
Fountain Hills	156	2	38	116	3	57	6	0	2
Gila Bend	45	1	16	28	1	22	4	0	4
Gilbert	1,673	2	532	1,139	2	821	97	0	70
Glendale	5,230	18	1,610	3,602	18	2,568	286	5	223
Goodyear	520	6	170	344	7	284	32	0	25
Guadalupe	151	0	46	105	0	65	4	0	3
Litchfield Park	51	2	18	31	4	37	4	0	1
Mesa	11,144	30	3,498	7,616	32	5,392	568	7	399
Paradise Valley	211	0	76	135	0	102	20	0	4
Peoria	2,081	9	589	1,483	10	937	97	5	65
Phoenix	41,235	223	15,809	25,203	233	26,029	2,586	76	2,323
Queen Creek	44	1	12	31	2	22	2	0	2
Scottsdale	4,410	17	1,540	2,853	24	2,309	325	13	253
Surprise	385	3	138	244	3	232	15	0	8
Tempe	8,518	20	2,632	5,866	21	4,026	516	2	377
Tolleson	242	1	85	156	1	134	15	0	14
Wickenburg	63	1	19	43	1	29	3	0	3
Youngtown	24	0	7	17	0	13	3	0	4
State Rural Roads	2,587	41	852	1,694	57	1,417	154	7	136
Other Rural Roads	3,228	39	1,181	2,008	44	1,883	248	14	192
<b>TOTAL</b>	<b>87,606</b>	<b>441</b>	<b>30,529</b>	<b>56,636</b>	<b>489</b>	<b>48,955</b>	<b>5,292</b>	<b>137</b>	<b>4,324</b>



## Section 2: Geographic Location

COUNTIES Cities	Total	Number of Crashes			No. of Persons		Alcohol-Related		
		Fatal	Injury	Property Damage	Killed	Injured	Crashes	Killed	Injured
<b>MOHAVE COUNTY</b>									
Bullhead City	832	8	266	558	11	415	92	1	72
Colorado City	19	0	7	12	0	11	0	0	0
Kingman	542	3	185	354	4	275	29	0	29
Lake Havasu City	593	2	227	354	2	353	64	0	45
State Rural Roads	794	26	308	460	37	574	54	6	56
Other Rural Roads	348	6	133	209	7	199	40	1	29
<b>TOTAL</b>	<b>3,128</b>	<b>45</b>	<b>1,126</b>	<b>1,947</b>	<b>61</b>	<b>1,827</b>	<b>279</b>	<b>8</b>	<b>231</b>
<b>NAVAJO COUNTY</b>									
Holbrook	105	5	27	73	5	44	3	0	2
Pinetop-Lakeside	128	1	40	87	1	63	12	0	9
Show Low	185	2	59	124	2	109	10	0	23
Snowflake	72	0	15	57	0	22	3	0	3
Taylor	23	0	8	15	0	19	1	0	0
Winslow	164	0	33	131	0	46	10	0	3
State Rural Roads	630	17	221	392	20	419	42	2	57
Other Rural Roads	209	17	73	119	17	138	32	6	43
<b>TOTAL</b>	<b>1,516</b>	<b>42</b>	<b>476</b>	<b>998</b>	<b>45</b>	<b>860</b>	<b>113</b>	<b>8</b>	<b>140</b>
<b>PIMA COUNTY</b>									
Marana	885	8	224	653	13	363	36	1	27
Oro Valley	322	1	82	239	1	140	9	0	1
Sahuarita	78	0	29	49	0	69	7	0	5
South Tucson	241	1	81	159	1	110	19	0	8
Tucson	15,306	51	5,655	9,600	55	8,799	761	17	609
State Rural Roads	1,154	35	412	707	50	781	77	14	86
Other Rural Roads	3,868	39	1,268	2,561	42	1,970	250	14	182
<b>TOTAL</b>	<b>21,854</b>	<b>135</b>	<b>7,751</b>	<b>13,968</b>	<b>162</b>	<b>12,232</b>	<b>1,159</b>	<b>46</b>	<b>918</b>
<b>PINAL COUNTY</b>									
Apache Junction	430	2	151	277	2	224	28	0	27
Casa Grande	774	3	241	530	6	361	29	0	23
Coolidge	112	0	27	85	0	40	10	0	1
Eloy	200	7	51	142	9	83	12	0	13
Florence	53	0	14	39	0	22	5	0	4
Kearny	5	0	3	2	0	5	0	0	0
Mammoth	5	0	2	3	0	5	0	0	0
Superior	30	0	13	17	0	19	2	0	2
State Rural Roads	1,176	29	414	733	33	752	74	5	78
Other Rural Roads	761	27	275	459	31	463	98	14	78
<b>TOTAL</b>	<b>3,546</b>	<b>68</b>	<b>1,191</b>	<b>2,287</b>	<b>81</b>	<b>1,974</b>	<b>258</b>	<b>19</b>	<b>226</b>

## 2002 Arizona Crash Facts Summary

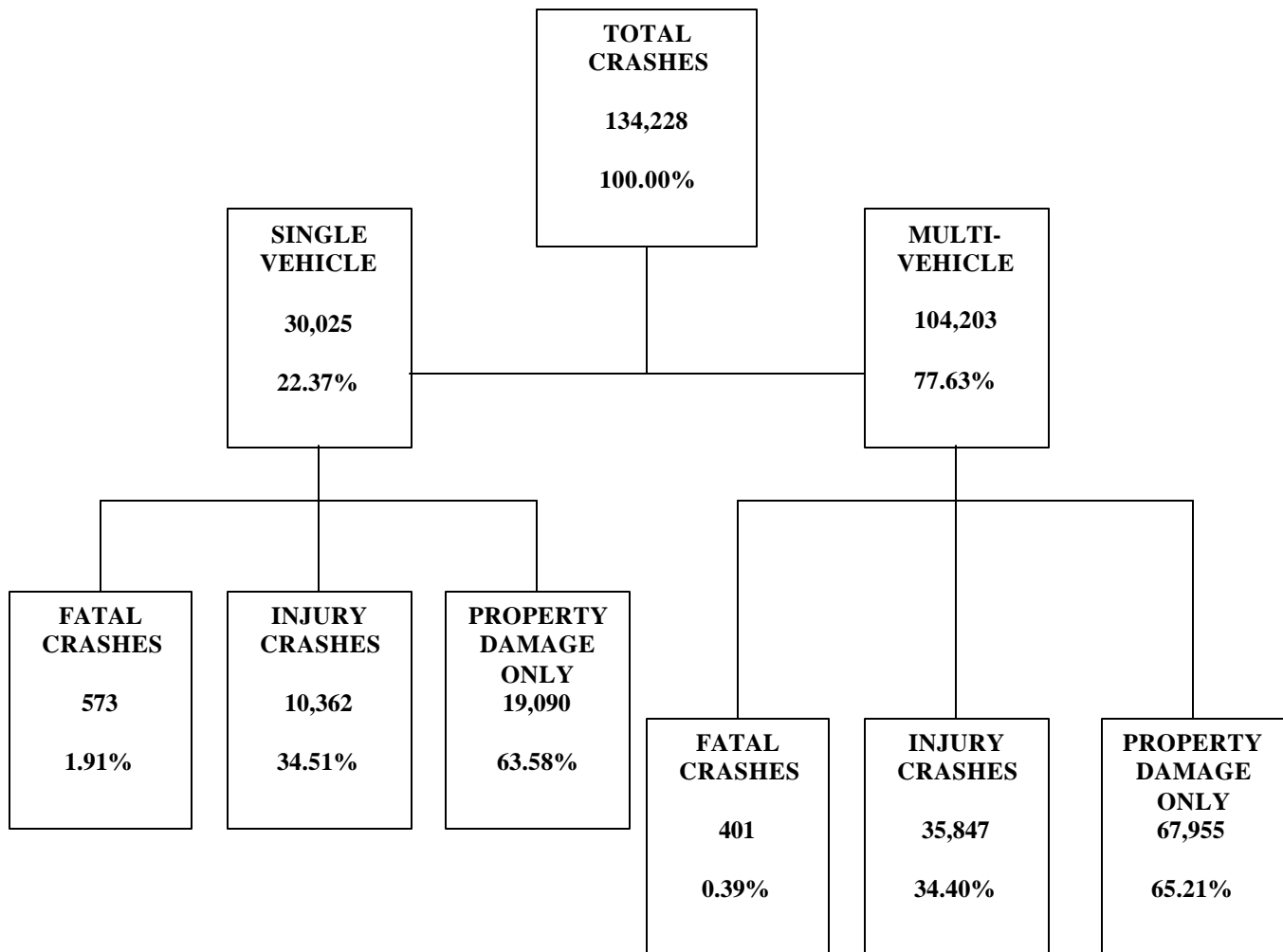
*About 60.2% of Arizona's population resides in Maricopa county, but only 45.3% of all fatal crashes occurred there in 2002.*

COUNTIES Cities	Total	Number of Crashes			No. of Persons		Alcohol-Related		
		Fatal	Injury	Property Damage	Killed	Injured	Crashes	Killed	Injured
<b>SANTA CRUZ COUNTY</b>									
Nogales	361	1	82	278	1	112	12	0	3
Patagonia	1	0	1	0	0	1	0	0	0
State Rural Roads	222	3	68	151	3	111	16	1	14
Other Rural Roads	8	1	1	6	1	1	1	1	0
<b>TOTAL</b>	<b>592</b>	<b>5</b>	<b>152</b>	<b>435</b>	<b>5</b>	<b>225</b>	<b>29</b>	<b>2</b>	<b>17</b>
<b>YAVAPAI COUNTY</b>									
Camp Verde	139	1	47	91	2	74	12	0	11
Chino Valley	107	1	36	70	1	52	8	1	6
Clarkdale	15	0	3	12	0	6	2	0	0
Cottonwood	283	1	111	171	1	176	16	1	12
Jerome	18	0	3	15	0	9	0	0	0
Prescott	1,069	5	289	775	5	407	55	0	30
Prescott Valley	510	5	131	374	5	192	39	1	27
State Rural Roads	1,246	26	404	816	29	655	67	6	56
Other Rural Roads	499	12	171	316	12	247	50	5	36
<b>TOTAL</b>	<b>3,886</b>	<b>51</b>	<b>1,195</b>	<b>2,640</b>	<b>55</b>	<b>1,818</b>	<b>249</b>	<b>14</b>	<b>178</b>
<b>YUMA COUNTY</b>									
San Luis	56	2	11	43	4	14	6	3	3
Somerton	26	0	7	19	0	10	1	0	0
Wellton	2	0	1	1	0	1	0	0	0
Yuma	1,720	11	719	990	12	1,189	99	1	78
State Rural Roads	365	13	133	219	14	241	16	1	15
Other Rural Roads	535	9	188	338	11	315	43	4	42
<b>TOTAL</b>	<b>2,704</b>	<b>35</b>	<b>1,059</b>	<b>1,610</b>	<b>41</b>	<b>1,770</b>	<b>165</b>	<b>9</b>	<b>138</b>
<b>STATEWIDE TOTAL</b>	<b>134,228</b>	<b>974</b>	<b>46,209</b>	<b>87,045</b>	<b>1,119</b>	<b>74,230</b>	<b>8,100</b>	<b>274</b>	<b>6,644</b>

Some individual city data may be incomplete due to lack of timely reporting.  
Totals within city and town jurisdictions include all State Highways

### Section 3: Crash Descriptions

### Section 3: Crash Descriptions



**Table 3-1**  
**Manner of Collision in Multi-Vehicle Crashes**

Manner of Collision	Total	Percent of	Fatal	Percent of	Injury	Percent of
		All Crashes		Fatal Crashes		Injury Crashes
Head On	811	0.78%	85	21.20%	450	1.26%
Rear End	48,153	46.21%	58	14.46%	16,659	46.47%
Side Swipe Opposite Direction	982	0.94%	9	2.24%	303	0.85%
Side Swipe Same Direction	12,870	12.35%	30	7.48%	2,073	5.78%
Left Turn	12,159	11.67%	71	17.71%	5,999	16.74%
Other Angle	22,597	21.69%	112	27.93%	8,985	25.06%
Backed Into	2,160	2.07%	0	0.0%	145	0.40%
U-Turn	1,497	1.44%	9	2.24%	482	1.34%
Other	2,974	2.85%	27	6.73%	751	2.10%
<b>TOTAL</b>	<b>104,203</b>	<b>100.00%</b>	<b>401</b>	<b>100.00%</b>	<b>35,847</b>	<b>100.00%</b>

**Table 3-2**  
**Unusual Road Conditions**

Unusual Road Conditions	Number of Crashes				Number of Victims	
	Total	Fatal	Injury	PDO	Killed	Injured
No Unusual Condition	127,833	940	44,218	82,675	1,082	71,111
Under Construction Thru Traffic Allowed	4,437	11	1,351	3,075	11	2,115
Under Construction Traffic Detoured	98	0	36	62	0	49
Under Repairs	120	0	38	82	0	68
Holes,Ruts,Bumps	338	7	125	206	7	199
Obstruction Protected	35	1	11	23	1	14
Obstruction Unprotected	120	0	25	95	0	39
Obstruction Unlighted at Night	110	4	38	68	4	56
Defective Shoulders	20	2	7	11	3	11
Changing Road Width	292	0	86	206	0	140
Flooded	362	7	129	226	8	204
Temporary Lane Closure	463	2	145	316	3	224
<b>TOTALS</b>	<b>134,228</b>	<b>974</b>	<b>46,209</b>	<b>87,045</b>	<b>1,119</b>	<b>74,230</b>

### Section 3: Crash Descriptions

**Table 3-3  
Weather Conditions**

Weather	Number of Crashes			Number of Persons		
	Total	Fatal	Injury	PDO	Killed	Injured
Clear	117,924	778	40,802	76,344	899	65,435
Raining	3,054	18	962	2,074	19	1,558
Cloudy	11,393	94	3,961	7,338	99	6,438
Snow,Sleet	976	5	245	726	7	397
Strong Wind	155	2	53	100	2	89
Blowing Sand	187	2	70	115	2	128
Fog,Smoke,Smog	73	1	25	47	1	37
Not Reported	466	74	91	301	90	148
<b>TOTALS</b>	<b>134,228</b>	<b>974</b>	<b>46,209</b>	<b>87,045</b>	<b>1119</b>	<b>74,230</b>

**Table 3-4  
Lighting Conditions**

Lighting	Number of Crashes			Number of Persons		
	Total	Fatal	Injury	PDO	Killed	Injured
Daylight	95,782	459	32,903	62,423	538	52,254
Dawn or Dusk	6,769	71	2,286	4,412	79	3,644
Darkness	31,344	444	10,957	19,945	497	18,234
Not Reported	333	0	63	265	5	98
<b>TOTALS</b>	<b>134,228</b>	<b>974</b>	<b>46,209</b>	<b>87,045</b>	<b>1,119</b>	<b>74,230</b>

**Table 3-5  
Road Surface**

Surface	Number of Crashes			Number of Persons		
	Total	Fatal	Injury	PDO	Killed	Injured
Asphalt	118,586	815	41,388	76,383	932	66,847
Concrete	13,326	57	4,091	9,178	67	6,213
Gravel	369	6	113	250	7	167
Dirt	1,464	24	505	935	25	816
Other	80	1	23	56	1	42
Not Reported	403	71	89	243	87	145
<b>TOTALS</b>	<b>134,228</b>	<b>974</b>	<b>46,209</b>	<b>87,045</b>	<b>1119</b>	<b>74,230</b>

**Table 3-6  
Road Surface Conditions**

Surface	Number of Crashes				Number of Persons	
	Total	Fatal	Injury	PDO	Killed	Injured
Wet	4,493	26	1,452	3,015	28	2,358
Loose Dirt, Sand, Etc.	807	10	283	514	13	432
Snowy or Icy	1,243	12	322	909	14	539
Other	101	1	33	67	1	45
Unknown	555	3	141	411	3	215
Dry, No Unusual Cond.	127,029	922	43,978	82,129	1,060	70,641
<b>TOTALS</b>	<b>134,228</b>	<b>974</b>	<b>46,209</b>	<b>87,045</b>	<b>1,119</b>	<b>74,230</b>

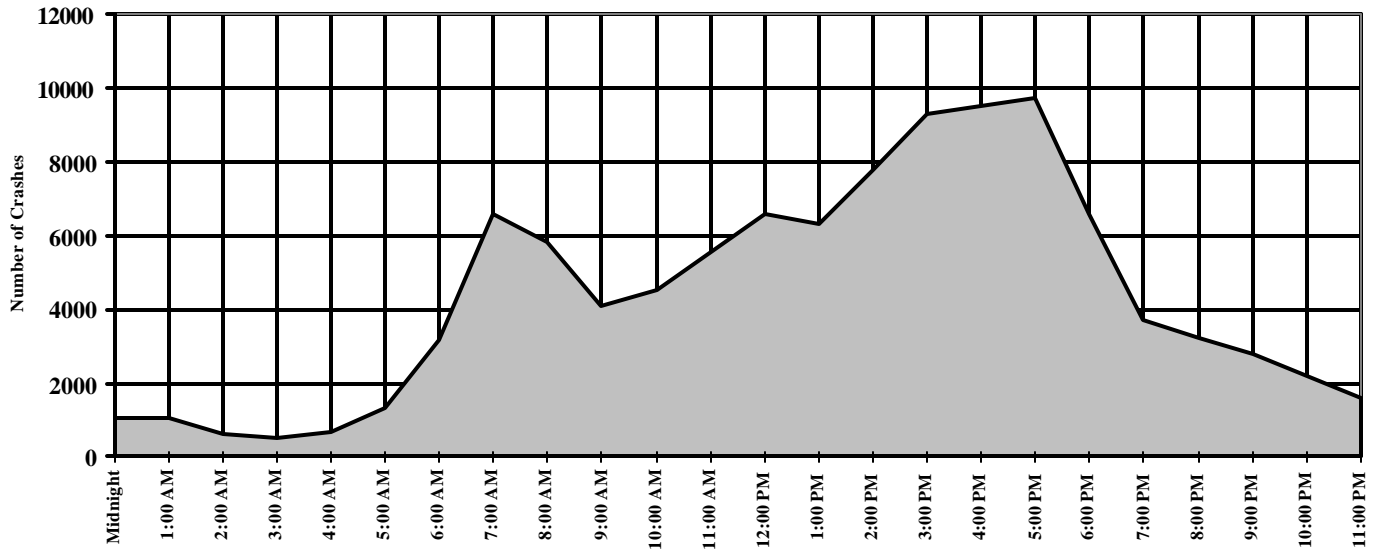
*The USDOT estimates that 67% of traffic fatalities are caused by Aggressive Drivers.*

**Table 3-7  
Road Grade**

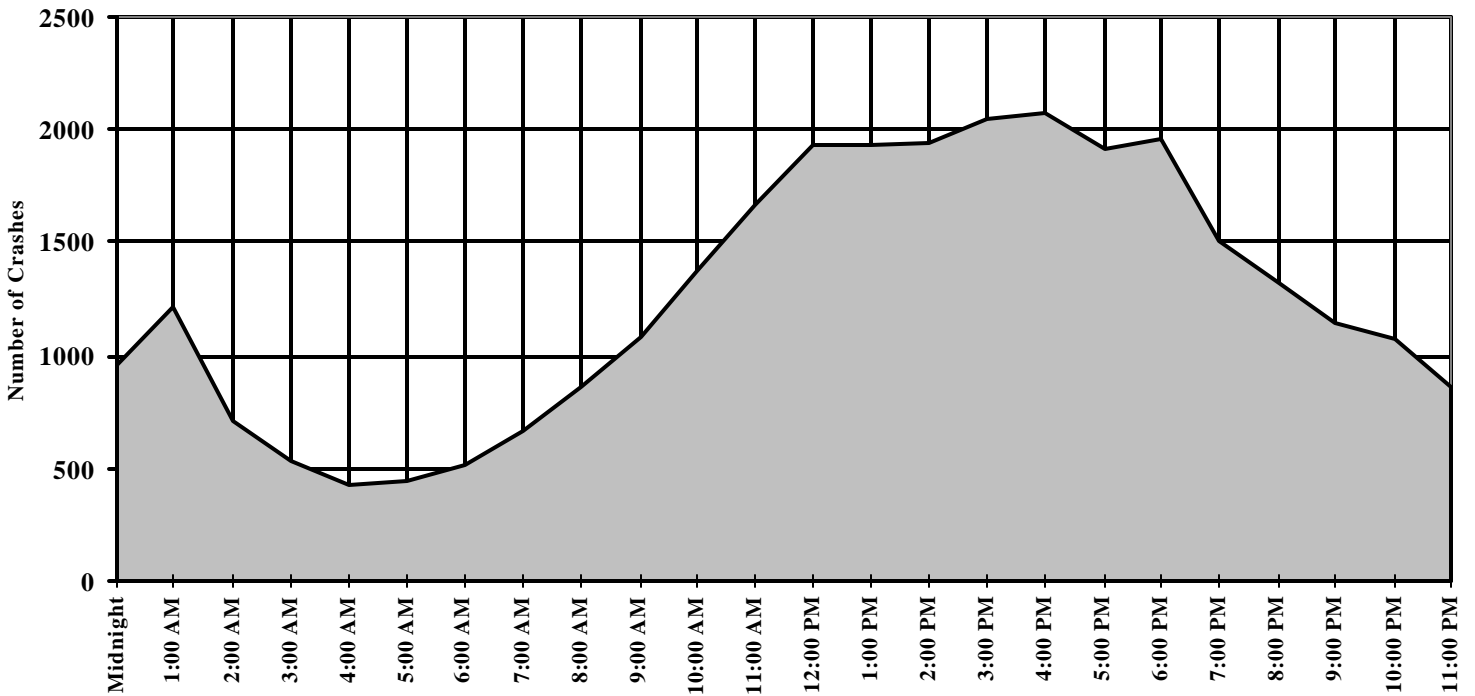
Road Grade	Number of Crashes				Number of Persons	
	Total	Fatal	Injury	PDO	Killed	Injured
Level	120,474	747	41,600	78,127	849	67,027
Downgrade	7,393	104	2,574	4,715	128	4,015
Upgrade	5,052	52	1,634	3,366	58	2,544
Hill Crest	404	9	141	254	9	246
Dip	164	6	52	106	6	88
Not Reported	741	56	208	477	69	310
<b>TOTALS</b>	<b>134,228</b>	<b>974</b>	<b>46,209</b>	<b>87,045</b>	<b>1,119</b>	<b>74,230</b>

### Section 3: Crash Descriptions

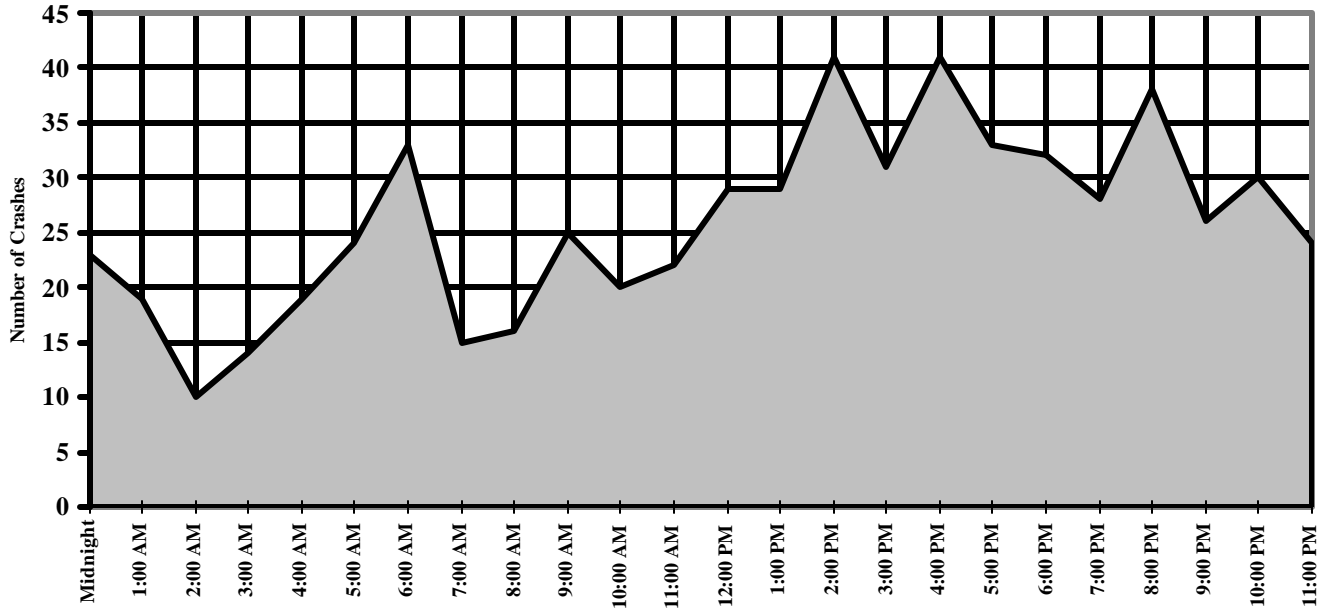
#### Figure 3-1 Crashes by Time of Day Weekdays



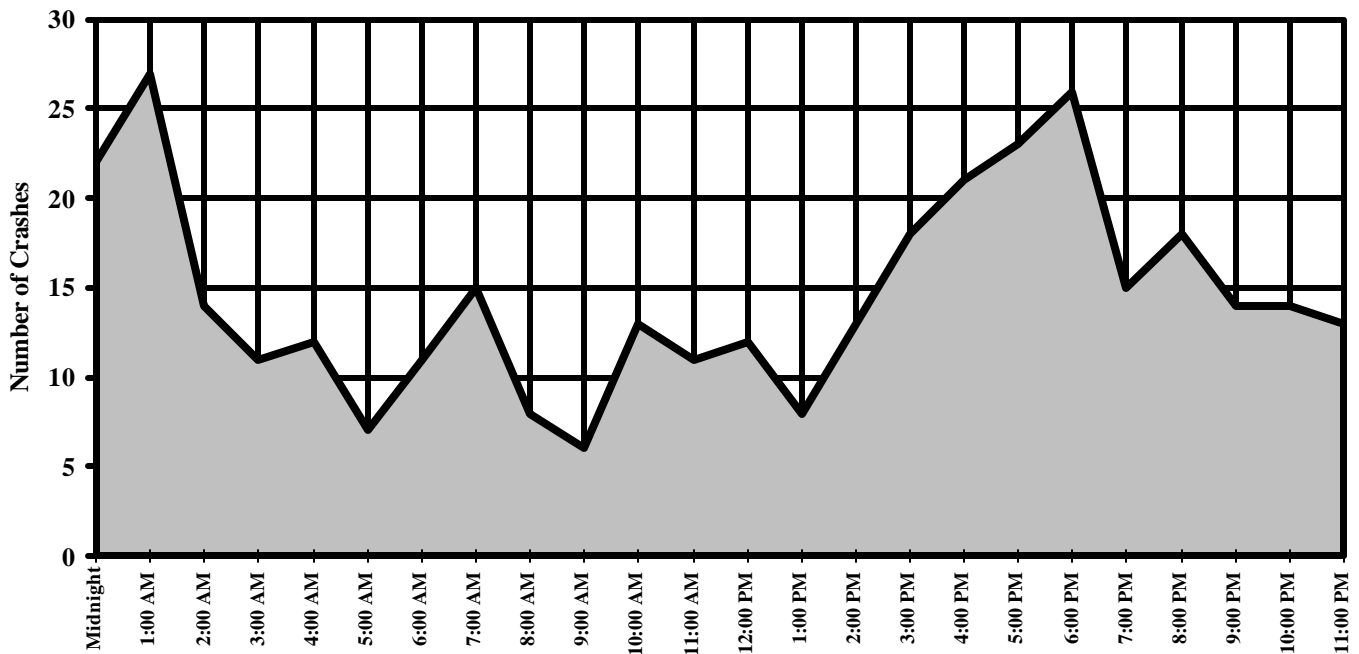
#### Figure 3-2 Crashes by Time of Day Weekends



**Figure 3-3**  
**Fatal Crashes by Time of Day**  
**Weekdays**  
**Figure 3-4**



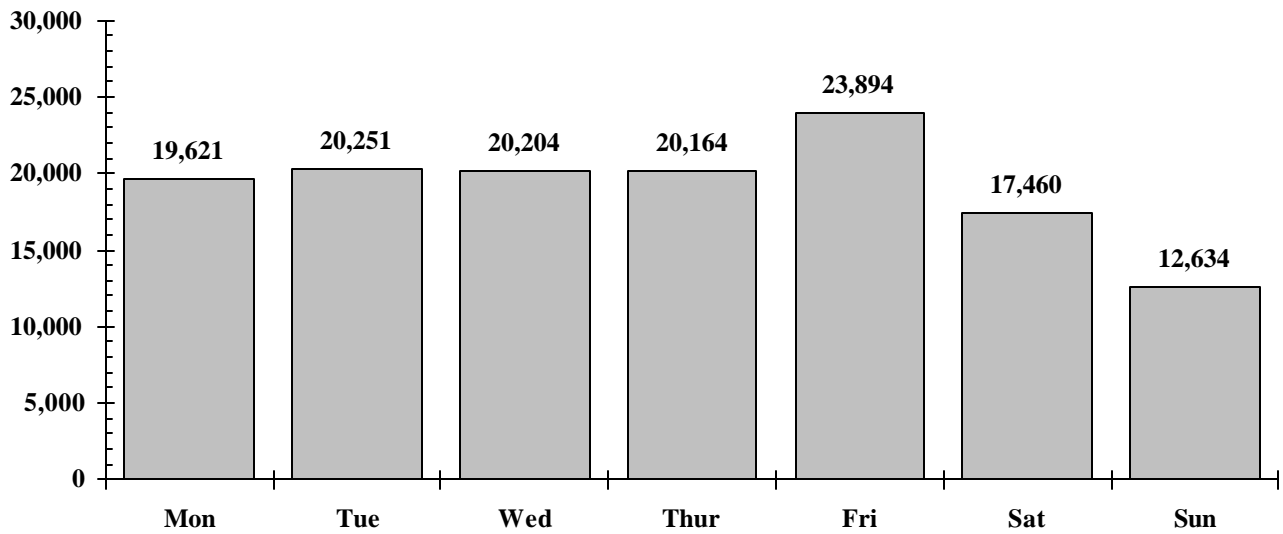
**Fatal Crashes by Time of Day**  
**Weekends**



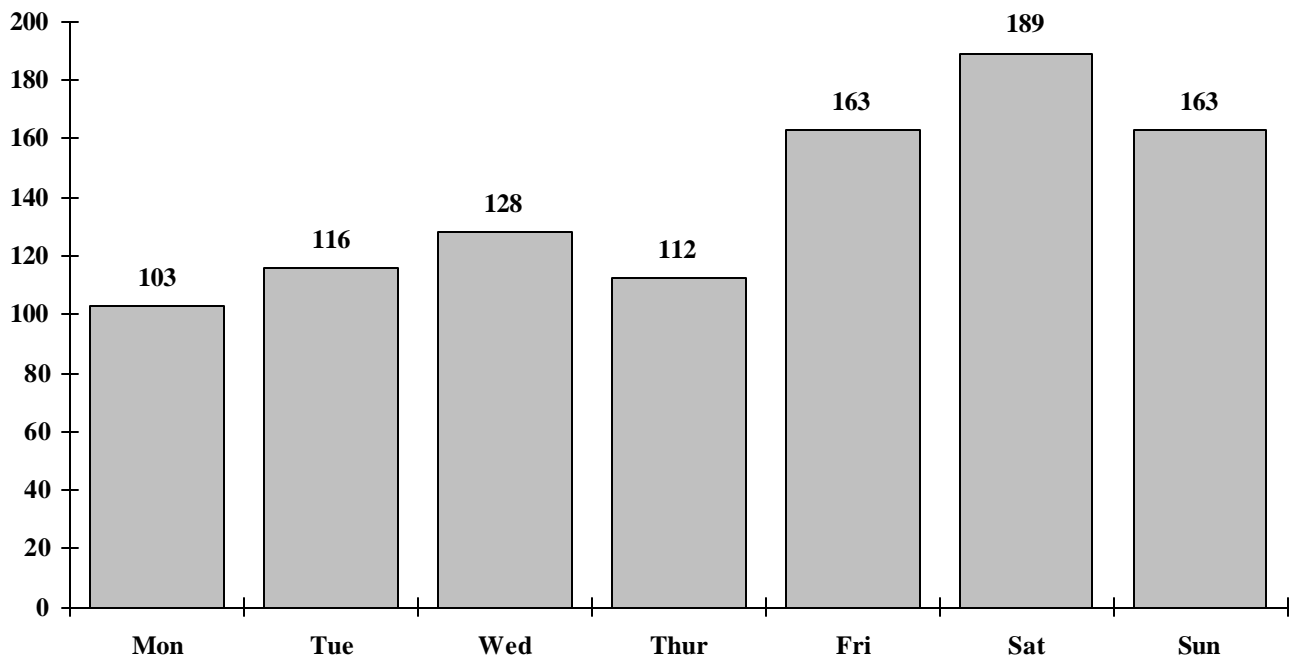


### Section 3: Crash Descriptions

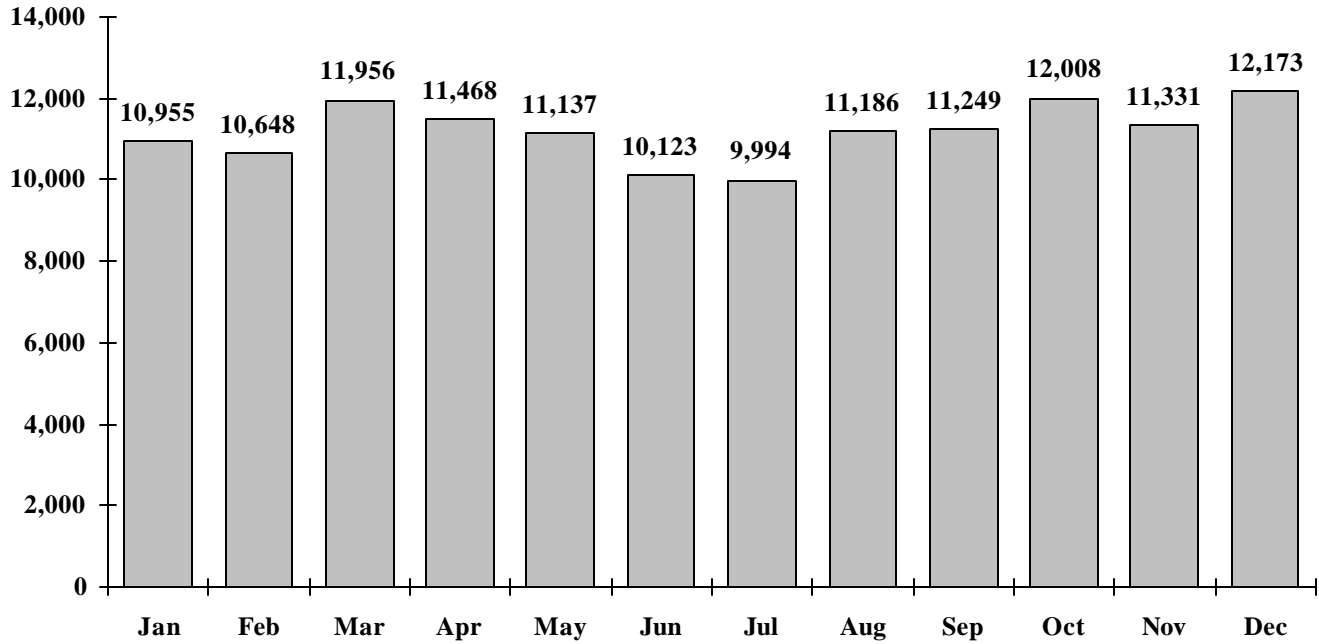
**Figure 3-5  
Crashes by Day of Week**



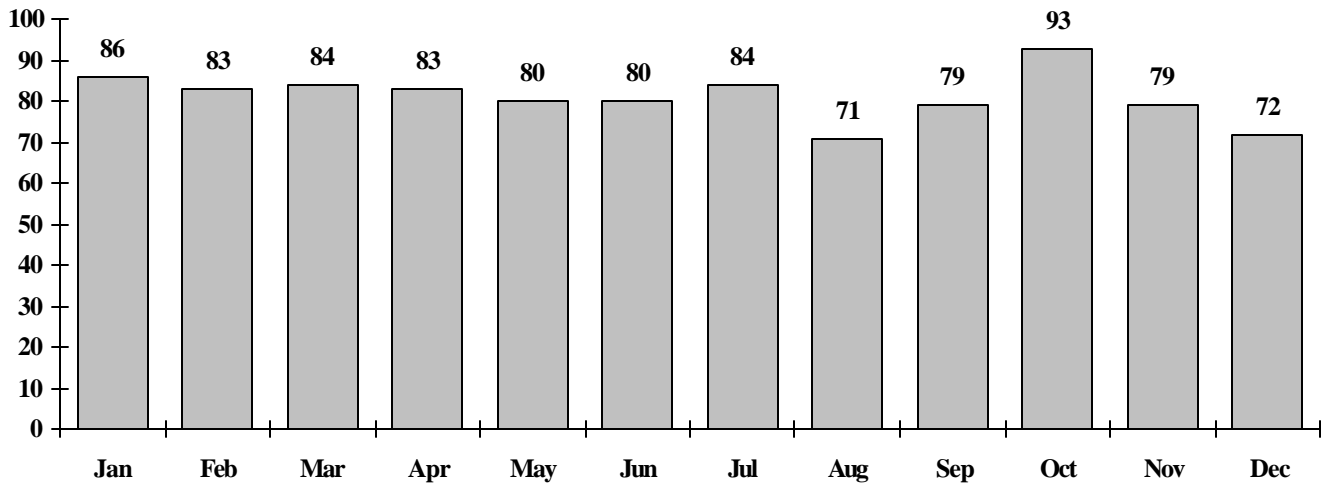
**Figure 3-6  
Fatal Crashes by Day of Week**



**Figure 3-7  
Crashes by Month**



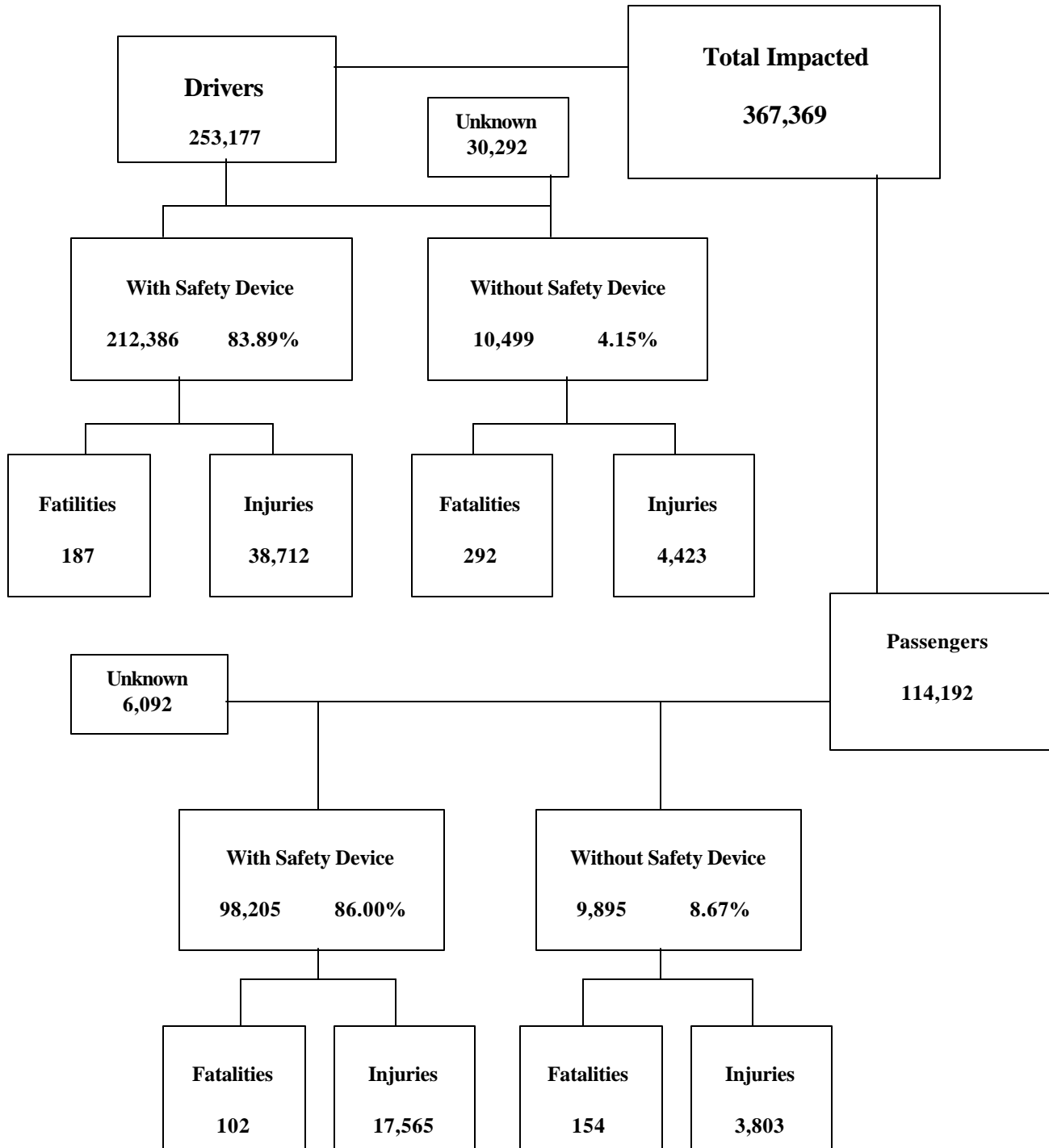
**Figure 3-8  
Fatal Crashes by Month**



**Table 3-9  
Crashes by Hour and Day of Week**

Hour Beginning	Total Crashes		Monday		Tuesday		Wednesday		Thursday		Friday		Saturday		Sunday	
	All	Fatal	All	Fatal	All	Fatal	All	Fatal	All	Fatal	All	Fatal	All	Fatal	All	Fatal
<b>Midnight</b>	<b>2,003</b>	<b>45</b>	230	4	176	3	184	6	201	2	255	8	470	13	487	9
<b>1:00</b>	<b>2,263</b>	<b>46</b>	205	3	181	3	174	3	213	4	284	6	592	11	614	16
<b>2:00</b>	<b>1,346</b>	<b>24</b>	129	0	102	1	128	5	120	1	155	3	359	12	353	2
<b>3:00</b>	<b>1,049</b>	<b>25</b>	132	3	93	1	91	3	84	3	118	4	262	3	269	8
<b>4:00</b>	<b>1,112</b>	<b>31</b>	130	3	132	4	107	1	138	7	177	4	227	7	201	5
<b>5:00</b>	<b>1,734</b>	<b>31</b>	266	5	274	6	217	1	275	3	261	9	238	6	203	1
<b>6:00</b>	<b>3,700</b>	<b>44</b>	620	7	646	7	697	6	626	6	592	7	281	5	238	6
<b>7:00</b>	<b>7,219</b>	<b>30</b>	1,258	1	1,374	3	1,394	6	1,329	1	1,197	4	414	10	253	5
<b>8:00</b>	<b>6,696</b>	<b>24</b>	1,176	3	1,318	2	1,137	4	1,147	5	1,058	2	543	5	317	3
<b>9:00</b>	<b>5,187</b>	<b>31</b>	,817	3	860	7	800	5	778	2	854	8	686	3	392	3
<b>10:00</b>	<b>5,899</b>	<b>33</b>	947	4	936	5	858	4	844	5	946	2	833	5	535	8
<b>11:00</b>	<b>7,201</b>	<b>33</b>	1,108	3	1,064	3	1,077	5	1,056	5	1,234	6	1,065	5	597	6
<b>Noon</b>	<b>8,510</b>	<b>41</b>	1,240	9	1,342	7	1,251	2	1,230	6	1,518	5	1,179	7	750	5
<b>1:00</b>	<b>8,209</b>	<b>37</b>	1,245	4	1,213	8	1,230	5	1,129	5	1,464	7	1,132	4	796	4
<b>2:00</b>	<b>9,724</b>	<b>54</b>	1,511	7	1,458	15	1,522	4	1,533	6	1,764	9	1,166	3	770	10
<b>3:00</b>	<b>11,357</b>	<b>49</b>	1,752	4	1,838	6	1,775	6	1,779	5	2,168	10	1,185	7	860	11
<b>4:00</b>	<b>11,585</b>	<b>62</b>	1,815	8	1,811	4	1,844	15	1,767	5	2,276	9	1,192	10	880	11
<b>5:00</b>	<b>11,626</b>	<b>56</b>	1,797	6	1,879	6	1,946	6	1,973	7	2,114	8	1,065	13	852	10
<b>6:00</b>	<b>8,520</b>	<b>58</b>	1,110	7	1,232	5	1,308	10	1,321	6	1,590	4	1,062	12	897	14
<b>7:00</b>	<b>5,191</b>	<b>43</b>	642	2	691	3	678	9	703	4	976	10	846	9	655	6
<b>8:00</b>	<b>4,504</b>	<b>56</b>	560	4	570	6	599	8	652	8	807	12	724	10	592	8
<b>9:00</b>	<b>3,918</b>	<b>40</b>	419	5	481	4	521	6	568	4	792	7	664	10	473	4
<b>10:00</b>	<b>3,219</b>	<b>44</b>	297	5	331	1	402	5	407	8	717	11	687	10	378	4
<b>11:00</b>	<b>2,456</b>	<b>37</b>	215	3	249	6	264	3	291	4	577	8	588	9	272	4
<b>TOTALS</b>	<b>134,228</b>	<b>974</b>	<b>19,621</b>	<b>103</b>	<b>20,251</b>	<b>116</b>	<b>20,204</b>	<b>128</b>	<b>20,164</b>	<b>112</b>	<b>23,894</b>	<b>163</b>	<b>17,460</b>	<b>189</b>	<b>12,634</b>	<b>163</b>

## Section 4: Safety Devices



In this chart, "Unknown" represents incidents where the reporting officer could not discern whether a safety device was in use at the time of the crash. For this reason fatalities and injuries occurring where use was unknown are not included. Motorcycle operators are included in this chart under "Drivers." "Safety devices" refer to the use of helmets or safety belts depending on the mode of transportation. For a detailed analysis of motorcycle helmet use, see Section 8: Motorcycle Crashes.

**Section 4: Safety Devices**

*Arizona law requires young children to be restrained when riding in a motor vehicle.*

*A.R.S. Title 28-907 states "...a person shall not operate a motor vehicle on the highways in this state when transporting a child who is under five years of age unless that child is properly secured in a child passenger restraint system."*

**Table 4-1  
Child Restraint Usage (less than five years old)**

<b>Severity of Injury</b>	<b>Restraint Used</b>	<b>Percent of Restraint Used</b>	<b>No Restraint Used</b>	<b>Percent of No Restraint</b>	<b>Not Reported</b>	<b>Percent of Unknown</b>
<b>No injury</b>	12,523	89.02%	528	63.31%	419	75.77%
<b>Possible injury</b>	972	6.91%	126	15.11%	55	9.95%
<b>Injury</b>	434	3.09%	166	19.90%	40	7.23%
<b>Fatality</b>	5	0.04%	7	0.84%	2	0.36%
<b>Unknown</b>	133	0.95%	7	0.84%	37	6.69%
<b>Totals</b>	<b>14,067</b>	<b>100.00%</b>	<b>834</b>	<b>100.00%</b>	<b>553</b>	<b>100.00%</b>

*The most dangerous place for a child to travel in a car is in your lap. This is often called the "child crusher position." In a crash of approximately 30 mph, a 10 lb infant will be ripped from a belted adult's arms with a force of almost 200 pounds. If the adult is unbelted, the child is likely to be crushed between the adult's body and the dashboard.*

*Wearing a seat belt isn't just good idea, in Arizona it's the law*

**Table 4-2  
Driver Restraint Usage**

Severity of Injury	Restraint Used	Percent of Restraint Used	No Restraint Used	Percent of No Restraint	Not Reported	Percent of Unknown
No injury	173,488	80.96%	5,784	53.89%	9,708	34.47%
Possible injury	23,738	11.08%	1,349	12.57%	1,433	5.09%
Injury	14,974	6.99%	3,074	28.64%	2,228	7.91%
Fatality	187	0.09%	292	2.72%	112	0.40%
Unknown	1,896	0.88%	234	2.18%	14,680	52.13%
<b>Total</b>	<b>214,283</b>	<b>100.00%</b>	<b>10,733</b>	<b>100.00%</b>	<b>28,161</b>	<b>100.00%</b>

Excludes all motorcycle, motor scooter, moped, and golf cart operators.

**Table 4-3  
Front-Seat Passenger Restraint Usage**

Severity of Injury	Restraint Used	Percent of Restraint Used	No Restraint Used	Percent of No Restraint	Not Reported	Percent of Unknown
No injury	47,030	79.20%	2,668	54.39%	1,917	64.16%
Possible injury	7,409	12.48%	771	15.72%	326	10.91%
Injury	4,505	7.59%	1,339	27.30%	498	16.67%
Fatality	81	0.14%	89	1.81%	20	0.67%
Unknown	355	0.60%	38	0.77%	227	7.60%
<b>Total</b>	<b>59,380</b>	<b>100.00%</b>	<b>4,905</b>	<b>100.00%</b>	<b>2,988</b>	<b>100.00%</b>

*According to NHTSA, "Safety belts, when used, reduce the risk of fatal injury to front seat passenger car occupants by 45%, and the risk of Moderate -to- critical injury by 50 %."*

## Section 4: Safety Devices

*NHTSA surveys show that in 2002, nationwide seatbelt usage was approximately 75 %.*

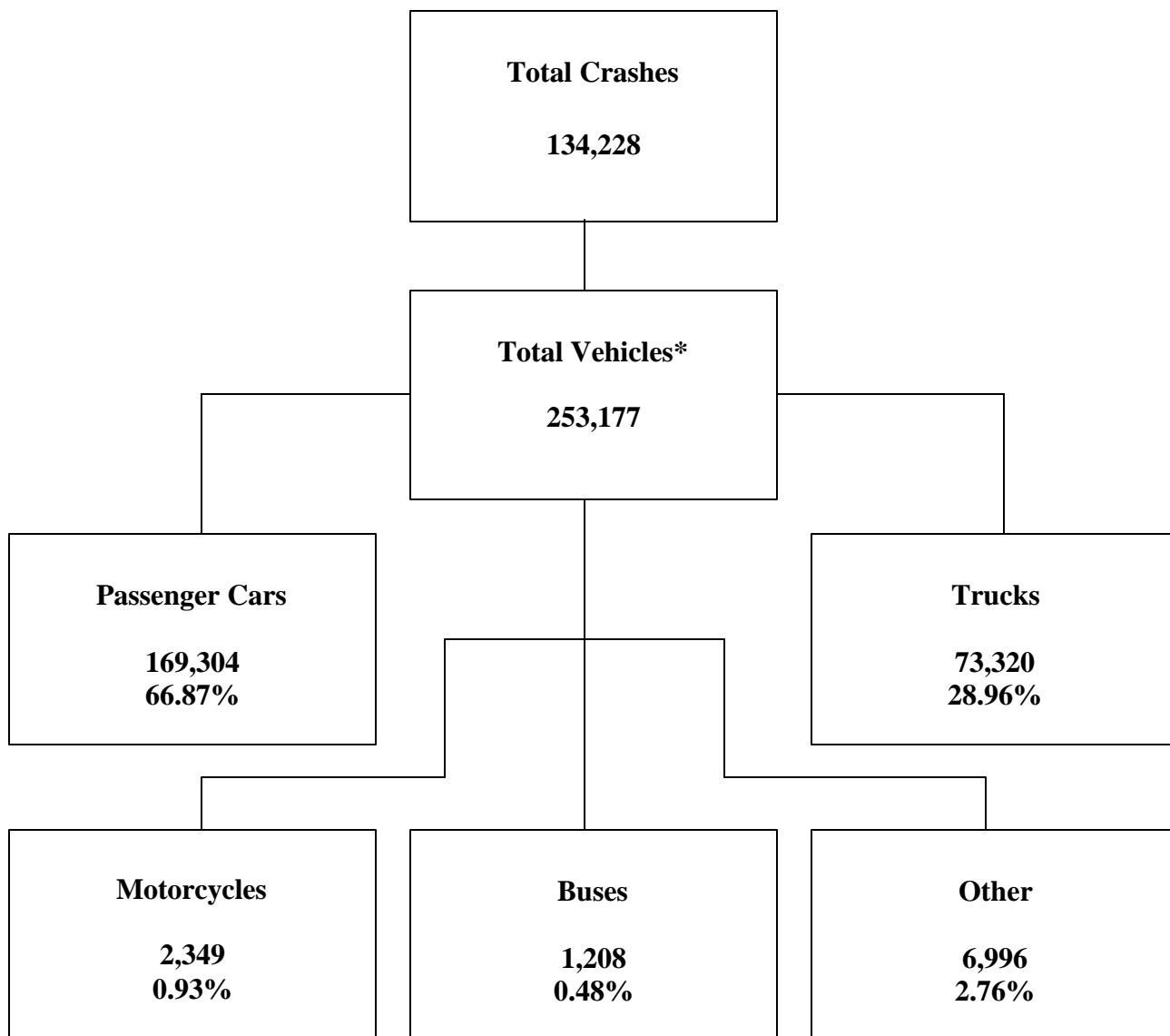
**Table 4-4**  
**Rear-Seat Passenger Restraint Usage**

Severity of Injury	Restraint Used	Percent of Restraint Used	No Restraint Used	Percent of No Restraint	Not Reported	Percent of Unknown
No injury	24,114	84.46%	2,741	64.84%	1,313	72.98%
Possible injury	2,766	9.69%	554	13.10%	169	9.40%
Injury	1,464	5.13%	847	20.03%	231	12.84%
Fatality	16	0.06%	58	1.37%	11	0.61%
Unknown	191	0.67%	28	0.66%	75	4.17%
<b>Total</b>	<b>28,551</b>	<b>100.00%</b>	<b>4,228</b>	<b>100.00%</b>	<b>1,799</b>	<b>100.00%</b>

*Regionally, the highest usage rate was in the West, at 78%.*

*Lowest usage rate was the Northeast, at 69%.*

### Section 5: Motor Vehicle and Driver Characteristics



\*Includes driverless or illegally parked vehicles.



## Section 5: Motor Vehicle and Driver Characteristics

**Table 5-1**  
**Arizona Motor Vehicle Registrations**

Privately Owned Vehicles	3,608,907
Commercial Vehicles	360,326
Buses and Taxis	3,326
Motorcycles*	116,669
Mopeds	434
<b>Total</b>	<b>4,089,662</b>

\*Includes 3 & 4 wheel ATVs and golf carts.

Data provided by, and inquiries should be directed to, Motor Vehicles Division.

**Table 5-2**  
**Motor Vehicle Crash Involvement by Vehicle Type**

Motor Vehicle Type	Total	Percent	Fatal	Injury	PDOs
Passenger Car (Includes cars with trailer)	169,306	66.87%	824	62,105	106,377
Pickup Truck (Incl. Panel & Mini Bus)	66,025	26.08%	368	22,653	43,004
Pickup Truck With Camper	28	0.01%	2	8	18
Other Vehicle With Camper	1	0.00%	0	1	0
Truck or Truck Tractor (Excl. P/U)	110	0.04%	2	31	77
Truck Tractor and Semi-Trailer	3,956	1.56%	67	937	2,952
Other Truck Combination	3,201	1.26%	25	895	2,281
Farm Tractor and/or Farm Equipment	41	0.02%	0	12	29
Taxicab	52	0.02%	0	23	29
Bus	803	0.32%	5	209	589
School Bus	405	0.16%	3	94	308
Motorcycle	2,349	0.93%	97	1,852	400
Motor Scooter or Motor Bicycle	9	0.00%	0	9	0
Moped	5	0.00%	0	4	1
Recreational Vehicle	113	0.04%	4	61	48
Motor Home or House Car	354	0.14%	6	78	270
Vehicle With Special Controls (Dual, Etc.)	4	0.00%	0	0	4
Emergency Veh. (Inc. Privately Owned)	123	0.05%	2	43	78
Military Vehicles	2	0.00%	0	0	2
Other Types Of Vehicles	175	0.07%	3	69	103
Vehicle Type Not Reported	6,115	2.42%	73	1,271	4,771
<b>TOTALS</b>	<b>253,177</b>	<b>100.00%</b>	<b>1,481</b>	<b>90,355</b>	<b>161,341</b>

**Table 5-3**  
**Hit and Run Drivers**

Hit And Run?	Number of Crashes				Number of Persons	
	Total	Fatal	Injury	PDOs	Killed	Injured
Yes	15,721	50	3,783	11,888	55	5,415
No	118,507	924	42,426	75,157	1,064	68,815
<b>TOTALS</b>	<b>134,228</b>	<b>974</b>	<b>46,209</b>	<b>87,045</b>	<b>1,119</b>	<b>74,230</b>

**Table 5-4**  
**Gender of Drivers Involved in Crashes**

Gender of Driver	Total		Fatal		Injury	
	Total	Percent	Fatal	Percent	Injury	Percent
Male	146,435	57.84%	1,022	69.01%	51,535	57.04%
Female	96,136	37.97%	390	26.33%	36,902	40.84%
Not Reported	10,604	4.19%	69	4.66%	1,916	2.12%
<b>TOTALS</b>	<b>253,175</b>	<b>100.00%</b>	<b>1,481</b>	<b>100.00%</b>	<b>90,353</b>	<b>100.00%</b>

**Table 5-5**  
**Residence of Drivers Involved in Crashes**

Residence of Driver	Total		Fatal		Injury		PDOs	
	Total	Percent	Fatal	Percent	Injury	Percent	PDOs	Percent
Arizona	203,873	80.53%	1,075	72.59%	74,363	82.30%	128,435	79.61%
Non-Resident	35,861	14.16%	310	20.93%	11,120	12.31%	24,431	15.14%
Not Reported	13,441	5.31%	96	6.48%	4,870	5.39%	8,475	5.25%
<b>TOTALS</b>	<b>253,175</b>	<b>100.00%</b>	<b>1,481</b>	<b>100.00%</b>	<b>90,353</b>	<b>100.00%</b>	<b>161,341</b>	<b>100.00%</b>

**Table 5-6**  
**Drivers and Occupants Killed and Injured by Vehicle Type**

Type of Motor Vehicle	Drivers		Occupants	
	Killed	Injured	Killed	Injured
Passenger Car (Includes Cars With Trailer)	329	34,093	247	17,751
Pickup Truck (Incl. Panel & Mini Bus)	123	10,118	71	5,729
Pickup Truck With Camper	1	4	0	10
Other Vehicle With Camper	0	0	0	0
Truck or Truck Tractor (Excl. P/U)	0	7	0	6
Truck Tractor and Semi-Trailer	10	241	2	70
Other Truck Combination	2	252	5	97
Farm Tractor and/or Farm Equipment	0	1	0	1
Taxicab	0	16	0	3
Bus	0	33	1	210
School Bus	1	20	0	81
Motorcycle	90	1,777	5	222
Motor Scooter or Motor Bicycle	0	8	0	0
Moped	0	4	0	1
Recreational Vehicle	2	34	1	14
Motor Home or House Car	1	20	2	26
Vehicle With Special Controls (Dual, Etc.)	0	0	0	0
Emergency Veh. (Inc. Privately Owned)	0	21	0	10
Military Vehicles	0	0	0	0
Other Types Of Vehicles	1	40	1	8
Vehicle Type Not Reported	32	106	18	85
<b>TOTALS</b>	<b>592</b>	<b>46,795</b>	<b>353</b>	<b>24,324</b>

## Section 5: Motor Vehicle and Driver Characteristics

**Table 5-7**  
**Licensed Drivers in Arizona by Age**

Driver Age Group	Male Number	Percent	Female Number	Percent	Total Number	Percent	Cumulative Percent
16	10,489	0.56%	9,642	0.48%	20,131	0.55%	0.55%
17	17,442	0.94%	15,960	0.88%	33,402	0.91%	1.46%
18	21,811	1.17%	19,695	1.09%	41,506	1.13%	2.59%
19	25,744	1.38%	23,185	1.28%	48,929	1.33%	3.92%
20	27,706	1.49%	25,094	1.39%	52,800	1.44%	5.36%
21	29,077	1.56%	27,065	1.50%	56,142	1.53%	6.89%
22	30,513	1.64%	27,821	1.54%	58,334	1.59%	8.48%
23	31,257	1.68%	29,030	1.60%	60,287	1.64%	10.12%
24	33,001	1.77%	30,067	1.66%	63,068	1.71%	11.83%
25-34	368,058	19.79%	336,285	18.59%	704,343	19.20%	31.03%
35-44	399,269	21.47%	385,354	21.30%	784,623	21.39%	52.42%
45-54	355,043	19.09%	358,693	19.83%	713,736	19.46%	71.88%
55-64	245,169	13.18%	250,309	13.84%	495,478	13.51%	85.39%
65-74	154,132	8.29%	153,531	8.49%	307,663	8.39%	93.78%
75 & Older	110,803	5.96%	117,459	6.49%	228,262	6.22%	100.00%
<b>TOTALS</b>	<b>1,859,514</b>	<b>100.00%</b>	<b>1,809,190</b>	<b>100.00%</b>	<b>3,668,704</b>	<b>100.00%</b>	<b>100.00%</b>

Source, Motor Vehicle Division.

*Drivers 65 years old and older represent 14.6 % of the licensed driver population, but only 7.05% of the total drivers involved in crashes.*

**Table 5-8**  
**Driver Involvement by Age**

Driver Age Group	Total	Percent	Fatal	Percent	Injury	Percent	PDOs	Percent
15 & Younger	922	0.36%	9	0.61%	382	0.42%	531	0.33%
16	5,257	2.08%	26	1.76%	1,832	2.03%	3,399	2.11%
17	6,865	2.71%	34	2.30%	2,440	2.70%	4,391	2.72%
18	8,505	3.36%	49	3.31%	3,223	3.57%	5,233	3.24%
19	8,641	3.41%	40	2.70%	3,175	3.51%	5,426	3.36%
20	7,861	3.10%	42	2.84%	2,858	3.16%	4,961	3.07%
21	7,773	3.07%	37	2.50%	2,931	3.24%	4,805	2.98%
22	7,447	2.94%	50	3.38%	2,754	3.05%	4,643	2.88%
23	6,750	2.67%	41	2.77%	2,506	2.77%	4,203	2.61%
24	6,263	2.47%	34	2.30%	2,238	2.48%	3,991	2.47%
25-34	53,420	21.10%	287	19.38%	19,660	21.76%	33,473	20.75%
35-44	45,052	17.79%	255	17.22%	16,460	18.22%	28,337	17.56%
45-54	32,842	12.97%	192	12.96%	11,883	13.15%	20,767	12.87%
55-64	18,846	7.44%	140	9.45%	6,903	7.64%	11,803	7.32%
65-74	10,179	4.02%	80	5.40%	3,676	4.07%	6,423	3.98%
75 & Older	7,681	3.03%	83	5.60%	6,538	7.24%	1,060	0.66%
Not Reported	18,871	7.45%	82	5.54%	894	0.99%	17,895	11.09%
<b>TOTALS</b>	<b>253,175</b>	<b>100.00%</b>	<b>1,481</b>	<b>100.00%</b>	<b>90,353</b>	<b>100.00%</b>	<b>161,341</b>	<b>100.00%</b>

## 2002 Arizona Crash Facts Summary

### Table 5-9 Driver Errors

Contributing Circumstances	Total Drivers	Percent of Total Drivers	Fatal Drivers	Percent of Fatal Drivers	Injury Drivers	Percent of Injury Drivers	PDO Drivers	Percent of PDO Drivers
Exceeded Lawful Speed	1,474	0.58%	99	6.68%	657	0.73%	718	0.45%
Speeding *	47,864	18.91%	283	19.11%	17,569	19.44%	30,012	18.60%
Failed to Yield	26,384	10.42%	112	7.56%	10,838	11.99%	15,434	9.57%
Ran Stop Sign	1,484	0.59%	25	1.69%	681	0.75%	778	0.48%
Disregarded Signal	5,431	2.15%	35	2.36%	2,884	3.19%	2,512	1.56%
Opposing Lane	1,419	0.56%	57	3.85%	582	0.64%	780	0.48%
Followed too Closely	5,004	1.98%	1	0.07%	1,516	1.68%	3,487	2.16%
Improper Turn	3,952	1.56%	6	0.41%	1,008	1.12%	2,938	1.82%
Driver Inattention	13,397	5.29%	54	3.65%	3,799	4.20%	9,544	5.92%
Other Improper Driving	7,066	2.79%	68	4.59%	1,955	2.16%	5,043	3.13%
Faulty Equipment	291	0.11%	0	0.00%	93	0.10%	198	0.12%
Unsafe Lane Change	6,572	2.60%	9	0.61%	1,123	1.24%	5,440	3.37%
Unsafe Passing	1,219	0.48%	11	0.74%	268	0.29%	940	0.58%
No Improper Driving	117,531	46.42%	526	35.52%	43,403	48.04%	73,602	45.62%
Not stated	14,089	5.56%	195	13.17%	3,979	4.40%	9,915	6.15%
<b>TOTALS</b>	<b>253,177</b>	<b>100.00%</b>	<b>1,481</b>	<b>100.00%</b>	<b>90,355</b>	<b>100.00%</b>	<b>161,341</b>	<b>100.00%</b>

\* Speeding too fast for conditions

### Table 5-10 Driver Physical Condition

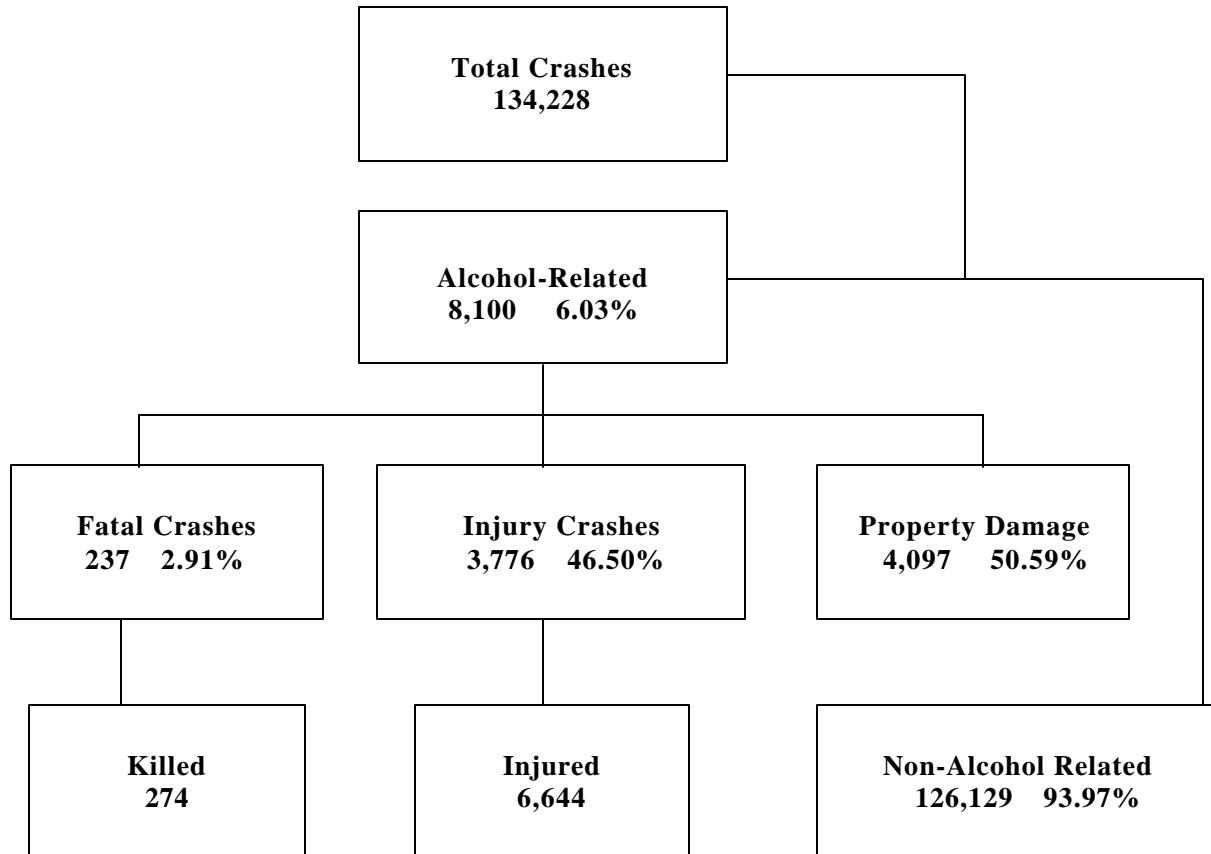
Driver Condition	Total Drivers	% of Total Drivers	Fatal Drivers	% of Fatal Drivers	Injury Drivers	% of Injury Drivers	PDO Drivers	% of PDO Drivers
No Apparent Influence	217,265	85.82%	836	56.45%	78,068	86.40%	138,361	85.76%
Impaired Had Been Drinking	8,224	3.25%	248	16.75%	3,831	4.24%	4,146	2.57%
Other Physical Impairment	400	0.16%	6	0.41%	202	0.22%	192	0.12%
Ill, Ability Influenced	384	0.15%	5	0.34%	234	0.26%	145	0.10%
Sleepy, Fatigued	1,571	0.62%	35	2.36%	734	0.81%	802	0.50%
Under Influence Of Drugs*	622	0.25%	27	1.82%	300	0.33%	295	0.18%
Not Reported/Unknown	24,711	9.76%	324	21.88%	6,986	7.73%	17,400	10.78%
<b>TOTALS</b>	<b>253,177</b>	<b>100.00%</b>	<b>1,481</b>	<b>100.0%</b>	<b>90,355</b>	<b>100.0%</b>	<b>161,341</b>	<b>100.00%</b>

\*Narcotic or Prescription

*According to the Bureau of Transportation Statistics there are more cars, trucks, and SUVs registered in the US than there are licensed drivers. The average American household has 1.9 vehicles and 1.8 drivers. That equals 204 million registered vehicles and 191 million drivers.*

**Section 6: Alcohol-Related Crashes**

**Section 6:  
Alcohol Related Crashes**



The statistics in the Alcohol-Related section represent those crashes where the investigating officer indicated that a driver had been drinking an alcoholic beverage and may or may not be substantiated by a blood or breath test. No assumption is to be made that the person was legally intoxicated (blood alcohol content of 0.08% or higher) at the time the crash took place.

<b>Economic Loss due to Alcohol-Related Crashes in Arizona for 2002</b>	
<b>Fatalities</b>	<b>\$298,660,000.</b>
<b>Injuries</b>	<b>\$137,271,400.</b>
<b>Property Damage</b>	<b>\$ 25,401,400.</b>
<b>Total</b>	<b>\$461,332,800.</b>

2002 Arizona Crash Facts Summary

**Table 6-1**  
**1997 to 2002 - Alcohol-Related Crashes**

Year	Alcohol-Related Crashes	Percent of all Crashes	Victims Killed	Percent of all Fatalities
1997	7,348	6.44%	249	26.24%
1998	7,610	6.33%	268	27.35%
1999	7,756	6.16%	267	26.07%
2000	8,048	6.13%	266	25.67%
2001	8,095	6.15%	258	24.64%
2002	8,100	6.03%	274	28.13%

**Table 6-2**  
**Manner of Collision in Alcohol-Related Crashes**

Manner Of Collision	Number of Crashes					
	Total	Percent of all Crashes	Fatal	Percent of Fatal Crashes	Injury	Percent of Injury Crashes
Single Vehicle	3,630	44.81%	137	57.80%	1,543	40.96%
Head On	168	2.07%	24	10.13%	107	2.84%
Rear End	1,959	24.19%	11	4.64%	915	24.30%
Sideswipe Opposite Direction	136	1.68%	1	0.42%	65	1.73%
Sideswipe Same Direction	434	5.36%	9	3.80%	131	3.47%
Left Turn	560	6.91%	15	6.33%	354	9.40%
Other Angle	952	11.75%	32	13.50%	556	14.75%
Backing Into	50	0.62%	0	0.00%	4	0.11%
U Turn	71	0.88%	3	1.27%	30	0.82%
Other	140	1.73%	5	2.11%	61	1.62%
<b>TOTALS</b>	<b>8,100</b>	<b>100.00%</b>	<b>237</b>	<b>100.00%</b>	<b>3,766</b>	<b>100.00%</b>

**Table 6-3**  
**Alcohol-Related Crashes by First Harmful Event/**

First Harmful Event	Total	Number of Crashes			Number of Persons	
		Fatal	Injury	PDO	Killed	Injured
Overturning	482	66	332	84	74	566
Pedestrian	46	6	38	2	6	48
Motor Veh. In Transit	4,365	97	2,170	2,098	118	4,417
Motor Veh. Other Roadway	5	1	4	0	2	12
Pedalcyclist	26	2	20	4	2	21
Animal	17	1	7	9	2	10
Fixed Object	2,356	46	908	1,402	50	1,183
Other Object	491	5	142	344	6	197
Miscellaneous	312	13	145	154	14	190
<b>TOTALS</b>	<b>8,100</b>	<b>237</b>	<b>3,766</b>	<b>4,097</b>	<b>274</b>	<b>6,644</b>

Section 6: Alcohol-Related Crashes

**Table 6-4**  
**Alcohol-Related Crashes by Vehicle Type**

Motor Vehicle Type	Total Number of Vehicles	Percent	Number of Vehicles		
			Fatal	Injury	PDO
Passenger Car	5,687	69.14%	146	2,611	2,930
Motor Home or House Car	9	0.11%	0	4	5
Pickup Truck (Incl. Panel & Mini Bus)	2,273	27.64%	68	1,055	1,150
Truck Tractor and Semi-Trailer	6	0.07%	0	2	4
Other Truck Combination	18	0.22%	0	5	13
RV (all wheel drive, dune buggy)	7	0.09%	1	6	0
Farm Tractor and/or Farm Equipment	0	0.00%	0	0	0
Taxicab	0	0.00%	0	0	0
Bus	3	0.04%	0	0	3
School Bus	1	0.01%	1	0	0
Motorcycle	166	2.02%	28	127	11
Motor Scooter or Motor Bicycle	1	0.01%	0	1	0
Other Special Vehicles	3	0.04%	1	2	0
Vehicle Type Not Reported	50	0.62%	3	18	30
<b>TOTALS</b>	<b>8,224</b>	<b>100.00%</b>	<b>248</b>	<b>3,831</b>	<b>4,146</b>

**Table 6-5**  
**Light Conditions - Alcohol-Related Crashes**

Light Condition	Total	Number of Crashes		
		Fatal	Injury	PDO
Daylight	2,292	60	1,097	1,135
Dawn or Dusk	385	15	194	176
Darkness	5,414	161	2,472	2,781
Not Reported	9	1	3	5
<b>TOTALS</b>	<b>8,100</b>	<b>237</b>	<b>3,766</b>	<b>4,097</b>

**Table 6-6**  
**Road Surface Conditions - Alcohol-Related Crashes**

	Total	Number of Crashes		
		Fatal	Injury	PDO
Dry	7,699	231	3,587	3,881
Wet	265	2	117	146
Snowy or Icy	24	0	10	14
Other	83	4	40	39
Not Reported	29	0	12	17
<b>TOTALS</b>	<b>8,100</b>	<b>237</b>	<b>3,766</b>	<b>4,097</b>

2002 Arizona Crash Facts Summary

**Table 6-7**

**Age of Driver - Alcohol-Related Crashes**

Driver Age	Total Drivers	Percent of all Drivers	Drivers In Fatal Crashes	Percent of all Fatal Drivers	Drivers In Injury Crashes	Percent of all Injury Drivers
15	23	0.28%	1	0.40%	14	0.37%
16	75	0.91%	6	2.42%	31	0.81%
17	144	1.75%	4	1.61%	73	1.91%
18	255	3.10%	10	4.03%	120	3.13%
19	293	3.56%	5	2.02%	134	3.50%
20	338	4.11%	9	3.63%	166	4.33%
21	425	5.17%	8	3.23%	193	5.04%
22	400	4.86%	15	6.05%	183	4.78%
23	369	4.49%	10	4.03%	174	4.54%
24	318	3.87%	9	3.63%	126	3.29%
25-34	2,248	27.33%	62	25.00%	1,079	28.17%
35-44	1,597	19.42%	56	22.58%	733	19.14%
45-54	911	11.08%	35	14.11%	431	11.25%
55-64	370	4.50%	12	4.84%	183	4.78%
65-74	124	1.51%	3	1.21%	59	1.54%
75 & Older	116	1.41%	1	0.40%	105	2.74%
Not Reported	218	2.65%	2	0.81%	26	0.68%
<b>TOTALS</b>	<b>8,224</b>	<b>100.00%</b>	<b>248</b>	<b>100.00%</b>	<b>3,830</b>	<b>100.00%</b>

*In total crashes across the state, 49.8% of the drivers were males.  
When alcohol was involved, males accounted for 70.8% of the drivers.*

**Table 6-8**

**Driver Gender - Alcohol-Related Crashes**

Driver Gender	Total Drivers	Percent of All Drivers	Drivers In Fatal Crashes	Percent of all Fatal Drivers	Drivers in Injury Crashes	Percent of all Injury Drivers
Male	6,622	80.52%	211	85.08%	3,093	80.76%
Female	1,516	18.43%	37	14.92%	712	18.59%
Not Reported	86	1.05%	0	0.00%	25	0.65%
<b>TOTALS</b>	<b>8,224</b>	<b>100.00%</b>	<b>248</b>	<b>100.00%</b>	<b>3,830</b>	<b>100.00%</b>



**Section 6: Alcohol-Related Crashes**

**Table 6-9  
Safety Restraints - Drinking Drivers**

Drivers	Number of Drinking Drivers				
	No Injury	Possible Injury	Non-Incapacitating Injury	Incapacitating Injury	Fatal
Restraint Used	3,157	385	576	183	23
No restraint Used	595	201	374	232	109
Restraint Use Unknown	1,452	222	297	136	18
<b>TOTALS</b>	<b>5,204</b>	<b>808</b>	<b>1,247</b>	<b>551</b>	<b>150</b>

**Table 6-10  
Persons Killed and Injured in Alcohol-Related Crashes**

Victims Age	Total Killed			Total Injured			Sex Unk.
	Total	Male	Female	Total	Male	Female	
<b>0 - 4</b>	4	3	1	116	47	69	0
<b>5 - 9</b>	0	0	0	126	58	68	0
<b>10 - 14</b>	4	3	1	189	91	98	0
<b>15 - 19</b>	38	27	11	885	556	328	1
<b>20 - 24</b>	54	44	10	1,338	918	420	0
<b>25 - 34</b>	57	48	9	1,579	1,080	497	2
<b>35 - 44</b>	52	38	14	1,083	691	390	2
<b>45 - 54</b>	40	33	7	674	411	262	1
<b>55 - 64</b>	17	13	4	297	175	122	0
<b>65 - 74</b>	4	3	1	133	79	54	0
<b>75 &amp; Older</b>	5	1	2	31	7	24	2
<b>Not Reported</b>	0	0	1	193	127	64	0
<b>TOTALS</b>	<b>274</b>	<b>213</b>	<b>61</b>	<b>6,644</b>	<b>4,240</b>	<b>2,396</b>	<b>8</b>

**Table 6-11**  
**When Alcohol-Related Crashes Occurred in 2002**

	Total	Weekday**	Weekend
Daytime***	2,172	1,297	875
Nighttime	5,928	2,315	3,613
<b>Total</b>	<b>8,100</b>	<b>3,612</b>	<b>4,488</b>

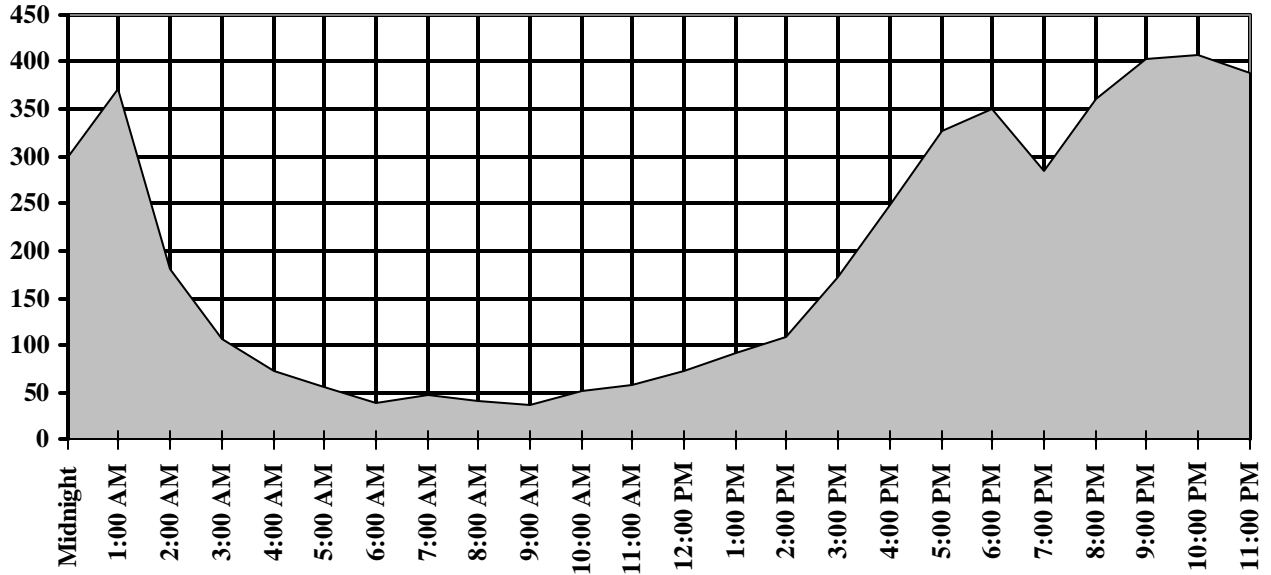
\*\*Weekend begins at 6:00 p.m. on Friday and continues through 6:00 a.m. Monday. All other times and days are considered Weekdays.

\*\*\*Daytime refers to the hours between 6:00 a.m. and 6:00 p.m.

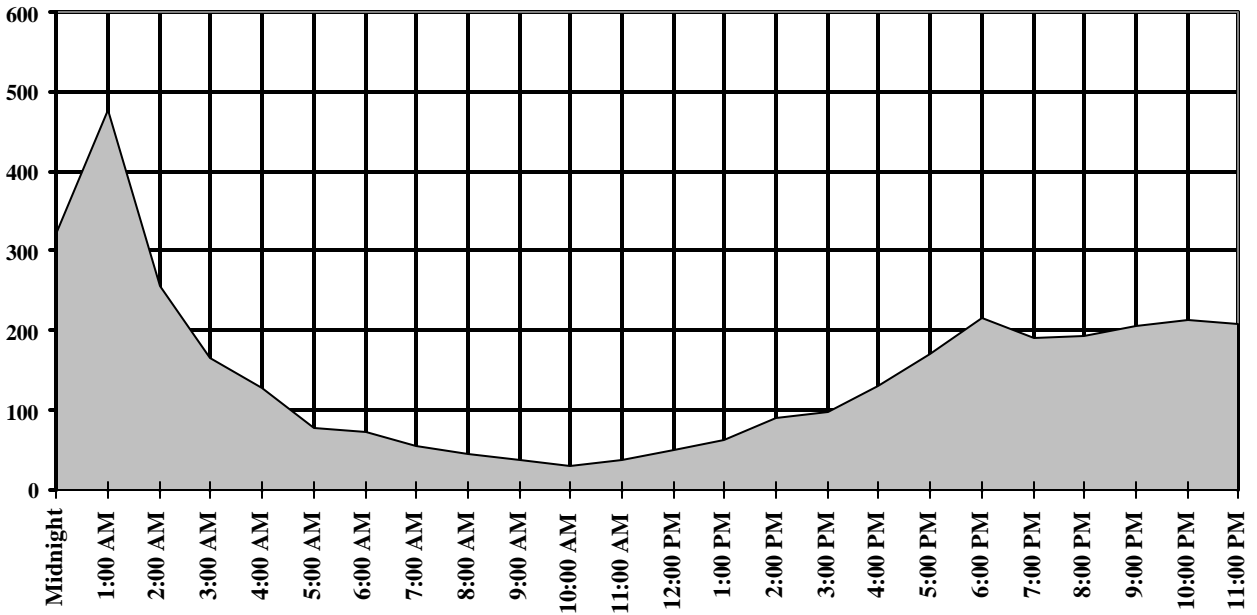
*According to the NHTSA, about 3 in every 10 Americans will be involved in an alcohol-related crash as some time in their lives.*

Section 6: Alcohol-Related Crashes

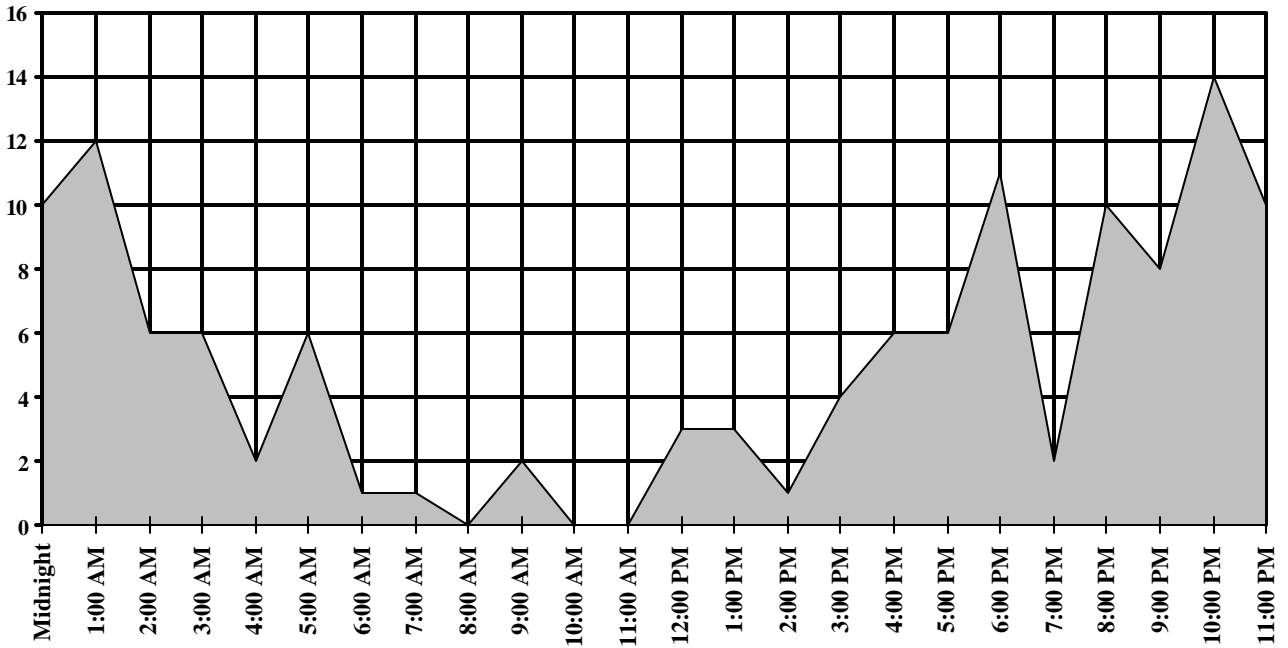
Figures 6-1 and 6-2  
Alcohol-Related Crashes  
Weekdays



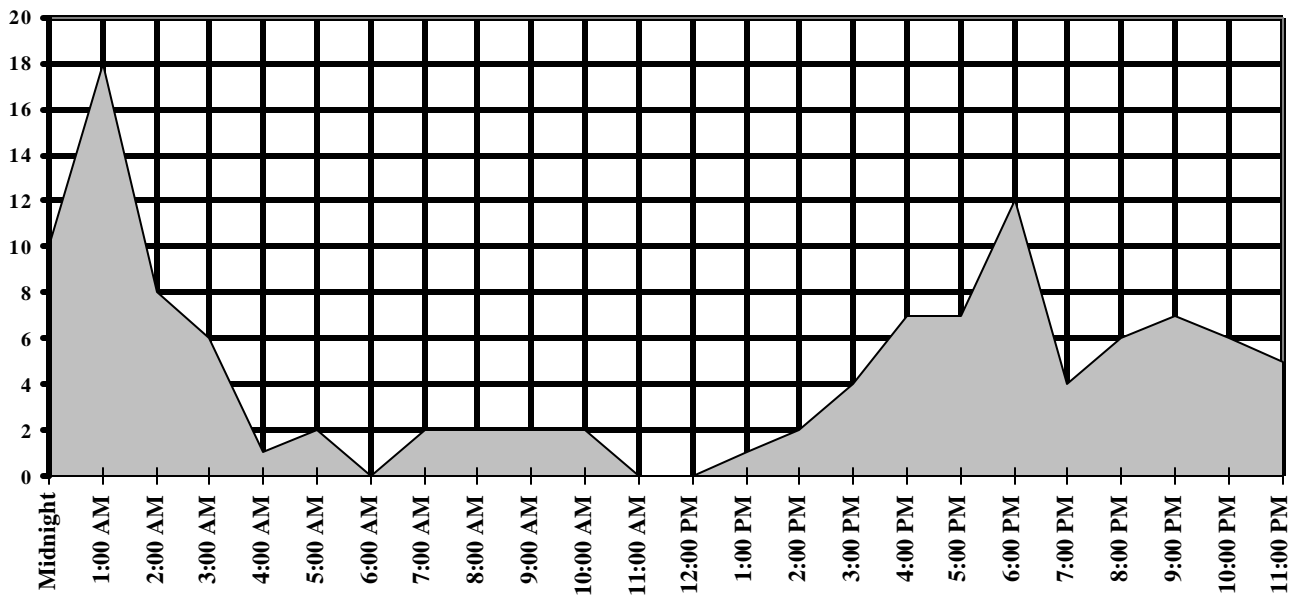
Weekends



**Figures 6-3 and 6-4**  
**Fatal Alcohol-Related Crashes**  
**Weekdays**



**Weekends**

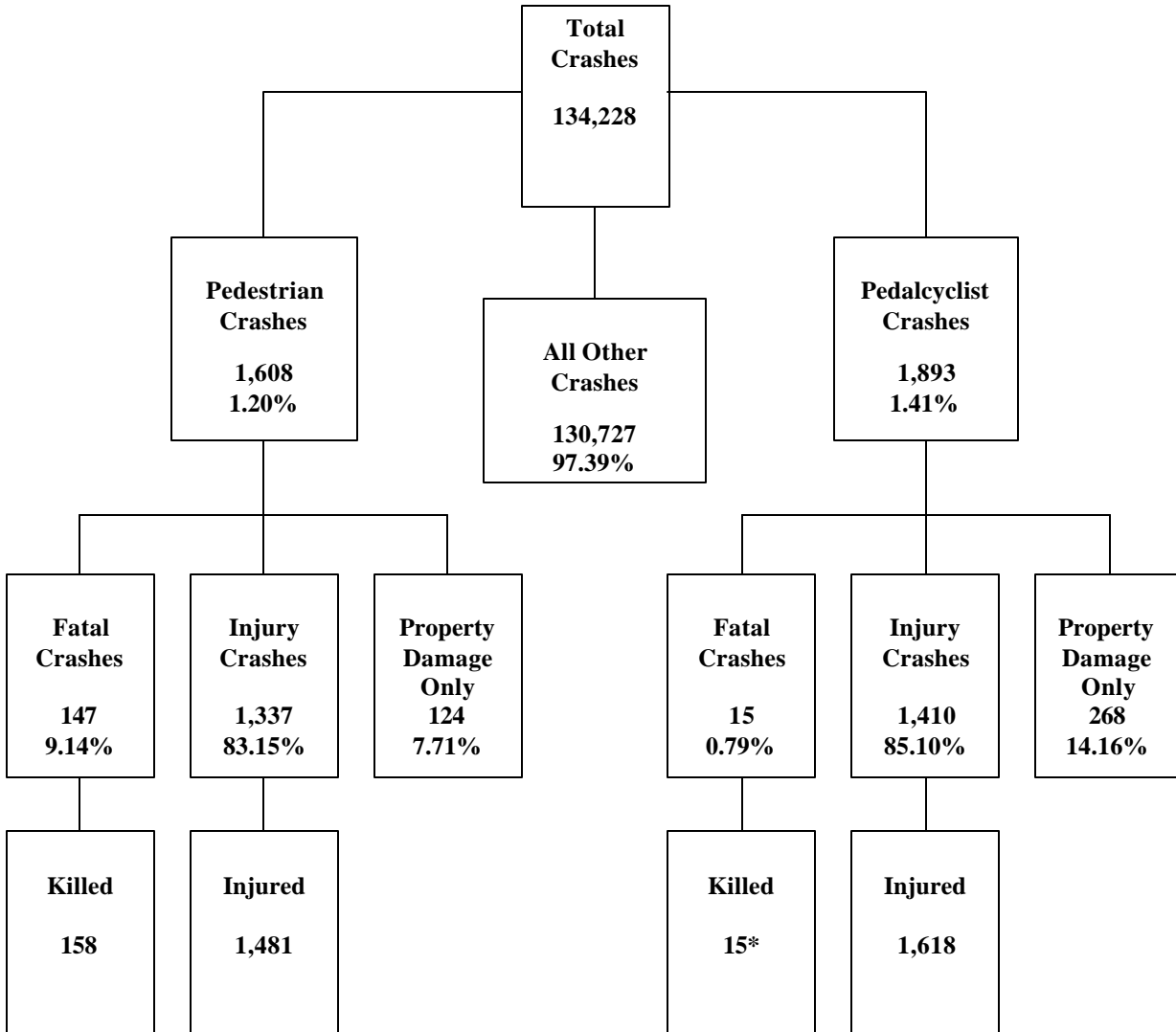


**Table 6-13**  
**Alcohol-Related Crashes**  
**By Hour and Day of Week**

Hour Beginning	Total Crashes		Monday		Tuesday		Wednesday		Thursday		Friday		Saturday		Sunday	
	All	Fatal	All	Fatal	All	Fatal	All	Fatal	All	Fatal	All	Fatal	All	Fatal	All	Fatal
<b>Midnight</b>	<b>621</b>	<b>20</b>	58	2	47	1	51	3	63	1	80	3	151	7	171	3
<b>1:00</b>	<b>847</b>	<b>30</b>	72	3	49	2	61	2	79	2	109	3	257	6	220	12
<b>2:00</b>	<b>435</b>	<b>14</b>	29	0	24	1	36	3	40	1	51	1	136	7	119	1
<b>3:00</b>	<b>272</b>	<b>12</b>	19	2	17	1	17	1	19	1	34	1	69	1	97	5
<b>4:00</b>	<b>201</b>	<b>3</b>	14	1	12	0	13	0	16	0	18	1	70	1	58	0
<b>5:00</b>	<b>133</b>	<b>8</b>	10	1	11	1	14	0	7	2	14	2	36	1	41	1
<b>6:00</b>	<b>111</b>	<b>1</b>	5	0	9	1	8	0	7	0	10	0	30	0	42	0
<b>7:00</b>	<b>103</b>	<b>3</b>	12	0	10	0	14	0	3	0	9	1	29	1	26	1
<b>8:00</b>	<b>85</b>	<b>2</b>	7	0	11	0	8	0	4	0	11	0	24	1	20	1
<b>9:00</b>	<b>75</b>	<b>4</b>	10	0	8	0	6	0	6	0	7	2	22	0	16	2
<b>10:00</b>	<b>82</b>	<b>2</b>	11	0	4	0	19	0	7	0	11	0	21	2	9	0
<b>11:00</b>	<b>96</b>	<b>0</b>	13	0	10	0	11	0	9	0	15	0	30	0	8	0
<b>Noon</b>	<b>123</b>	<b>3</b>	12	1	16	1	15	0	14	1	16	0	23	0	27	0
<b>1:00</b>	<b>154</b>	<b>3</b>	18	0	23	1	15	1	17	0	19	1	40	0	22	0
<b>2:00</b>	<b>198</b>	<b>3</b>	24	1	20	0	24	0	19	0	21	0	51	0	39	2
<b>3:00</b>	<b>269</b>	<b>8</b>	25	0	34	2	38	1	39	1	37	0	58	2	38	2
<b>4:00</b>	<b>378</b>	<b>13</b>	44	2	36	0	49	2	41	0	78	2	72	5	58	2
<b>5:00</b>	<b>498</b>	<b>13</b>	47	0	52	1	53	2	84	2	92	1	90	3	80	4
<b>6:00</b>	<b>565</b>	<b>23</b>	52	2	52	1	66	1	66	4	114	3	106	4	109	8
<b>7:00</b>	<b>475</b>	<b>6</b>	45	0	56	0	41	1	60	0	82	1	100	3	91	1
<b>8:00</b>	<b>553</b>	<b>16</b>	66	1	53	1	52	3	69	2	121	3	110	4	82	2
<b>9:00</b>	<b>608</b>	<b>15</b>	55	2	57	0	70	2	82	1	138	3	118	6	88	1
<b>10:00</b>	<b>622</b>	<b>20</b>	55	2	54	0	72	3	82	4	145	5	139	6	75	0
<b>11:00</b>	<b>596</b>	<b>15</b>	53	1	45	1	60	1	70	2	159	5	144	3	65	2
<b>Not Reported</b>	<b>0</b>	<b>0</b>	0	0	0	0	0	0	0	0	0	0	0	0	0	0
<b>TOTALS</b>	<b>8,100</b>	<b>237</b>	<b>756</b>	<b>21</b>	<b>710</b>	<b>15</b>	<b>813</b>	<b>26</b>	<b>903</b>	<b>24</b>	<b>1,391</b>	<b>38</b>	<b>1,926</b>	<b>63</b>	<b>1,601</b>	<b>50</b>

**Section 7:**

**Pedestrian and Pedalcyclist Crashes**



\*This is the lowest number of pedalcycle deaths in 20 years.

**Section 7: Pedestrian and Pedalcyclist Crashes**

**Table 7-1  
Pedestrians By Age and Gender**

Age Group	Persons Killed			Persons Injured			
	Total	Male	Female	Total	Male	Female	Not Reported
0-4	2	2	0	54	34	20	0
5-9	3	2	1	95	63	32	0
10-14	4	2	2	178	105	72	1
15-19	6	3	3	180	101	79	0
20-24	7	6	1	135	97	38	0
25-34	22	17	5	176	121	55	0
35-44	31	24	7	198	140	58	0
45-54	38	30	8	198	139	59	0
55-64	12	8	4	83	55	28	0
65-74	13	8	5	54	33	21	0
75 & Older	19	10	9	43	17	25	1
Not Reported	1	0	1	87	44	37	6
<b>Total</b>	<b>158</b>	<b>112</b>	<b>46</b>	<b>1,481</b>	<b>949</b>	<b>524</b>	<b>8</b>

*Nationally, on average, a pedestrian is killed by a motor vehicle every 109 minutes, and one is injured every 6.9 minutes.*

**Table 7-2  
Pedestrian Crashes**

Statewide	Total	Urban	Rural
Number of Crashes	1,608	1,386	222
Persons Killed	158	49	109
Persons Injured	1,481	170	1,311
Property Damage Only	124	98	26

**Table 7-3  
Pedestrian Crash History**

Year	Number of Pedestrians	
	Fatal	Injury
1993	140	1,445
1994	151	1,593
1995	179	1,634
1996	165	1,621
1997	153	1,624
1998	161	1,594
1999	148	1,571
2000	137	1,637
2001	166	1,509
2002	158	1,481

*Across the U.S., approximately 71,000 pedestrians were injured and 4,808 were killed in traffic crashes, representing 2.4 percent of all the people injured and 11.2 percent of all traffic fatalities.*

**Table 7-4  
Pedestrians Killed**

Pedestrian Action	Total	Age Group								Not Reported
		0-4	5-9	10-14	15-19	20-24	25-44	45-64	65 & Older	
Crossing Road	96	2	2	1	2	2	33	29	25	0
Walking In Roadway With Traffic	7	0	0	0	0	0	4	2	1	0
Walking In Roadway Against Traffic	10	0	0	0	0	2	1	5	2	0
Standing In Roadway	14	0	1	1	2	0	4	5	1	0
Pushing or Working On Veh. In Roadway	0	0	0	0	0	0	0	0	0	0
Other Working In Roadway	0	0	0	0	0	0	0	0	0	0
Lying In Roadway	4	0	0	0	1	0	2	1	0	0
Getting On or Off Veh. In Roadway	1	0	0	0	0	0	0	0	1	0
Other In Actions In Roadway	10	0	0	1	0	0	4	3	2	0
Unknown	16	0	0	1	1	3	5	5	1	0
Not Reported	0	0	0	0	0	0	0	0	0	0
<b>TOTALS</b>	<b>158</b>	<b>2</b>	<b>3</b>	<b>4</b>	<b>6</b>	<b>7</b>	<b>53</b>	<b>50</b>	<b>33</b>	<b>0</b>

**Table 7-5  
Pedestrians Injured**

Pedestrian Action	Total	Age Group								Not Reported
		0-4	5-9	10-14	15-19	20-24	25-44	45-64	65 & Older	
Crossing Road	869	39	64	105	106	73	202	176	104	0
Walking In Roadway With Traffic	69	3	2	5	11	6	21	15	6	0
Walking In Roadway Against Traffic	85	1	2	12	7	15	19	15	14	0
Standing In Roadway	92	5	1	4	11	9	36	20	6	0
Pushing or Working On Veh. In Roadway	10	0	0	1	0	3	2	3	1	0
Other Working In Roadway	5	0	0	0	0	1	3	1	0	0
Lying In Roadway	8	0	1	0	0	0	7	0	0	0
Getting On or Off Veh. In Roadway	11	0	1	1	0	2	2	1	4	0
Other In Actions In Roadway	235	4	19	37	31	16	57	36	35	0
Unknown	97	2	5	13	14	10	25	14	14	0
Not Reported	0	0	0	0	0	0	0	0	0	0
<b>TOTALS</b>	<b>1,481</b>	<b>54</b>	<b>95</b>	<b>178</b>	<b>180</b>	<b>135</b>	<b>374</b>	<b>281</b>	<b>184</b>	<b>0</b>

**Table 7-6  
Pedestrian Physical Condition**

Pedestrian Condition	% of Total Peds		% of Fatal Peds		% of Injury Peds		% of PDO	
	Total	%	Fatal	%	Injury	%	PDO	%
No Apparent Impairment	1,044	59.49%	40	25.32%	939	63.40%	65	56.03%
Impaired Had Been Drinking	264	15.04%	47	29.75%	209	14.11%	8	6.90%
Other Bodily Impairment	42	2.39%	2	1.27%	36	2.43%	4	3.45%
Ill, Ability Influenced	5	0.28%	0	0.00%	4	0.27%	1	0.86%
Sleepy, Fatigued	1	0.06%	1	0.63%	0	0.00%	0	0.00%
Under Influence Of Drugs*	8	0.46%	3	1.90%	5	0.34%	0	0.00%
Not Reported/Unknown	391	22.28%	65	41.14%	288	19.44%	38	32.76%
<b>TOTALS</b>	<b>1,755</b>	<b>100.00%</b>	<b>158</b>	<b>100.0%</b>	<b>1,481</b>	<b>100.0%</b>	<b>116</b>	<b>100.0%</b>

\*Narcotic or Prescription



**Section 7: Pedestrian and Pedalcyclist Crashes**

**Table 7-7  
Lighting Conditions - Pedestrian Crashes**

Lighting Conditions	Number of Pedestrian Crashes			
	Total	Fatal	Injury	PDOs
<b>Daylight</b>	<b>931</b>	40	811	83
<b>Darkness</b>	<b>582</b>	98	453	25
<b>Dawn or Dusk</b>	<b>92</b>	9	71	15
<b>Not Reported</b>	<b>3</b>	0	2	1
<b>TOTALS</b>	<b>1,608</b>	147	1,337	124

**Table 7-8  
Weather Conditions - Pedestrian Crashes**

Weather Conditions	Number of Pedestrian Crashes			
	Total	Fatal	Injury	PDOs
<b>Clear</b>	<b>1,431</b>	115	1,206	110
<b>Raining</b>	<b>26</b>	5	18	3
<b>Cloudy</b>	<b>126</b>	11	105	10
<b>Snowing</b>	<b>2</b>	1	1	0
<b>Strong wind</b>	<b>1</b>	0	1	0
<b>Dust</b>	<b>1</b>	1	0	0
<b>Fog</b>	<b>1</b>	1	0	0
<b>Other</b>	<b>2</b>	0	2	0
<b>Not Reported</b>	<b>18</b>	13	4	1
<b>TOTALS</b>	<b>1,608</b>	147	1,337	124

**Table 7-9  
Pedalcyclists by Age and Gender**

Age Group	Persons Killed			Persons Injured			Not Reported
	Total	Male	Female	Total	Male	Female	
0-4	0	0	0	8	8	0	0
5-9	0	0	0	79	56	22	1
10-14	1	1	0	274	225	48	1
15-19	1	0	1	218	163	55	0
20-24	0	0	0	179	135	44	0
25-34	2	2	0	239	194	44	1
35-44	4	4	0	249	197	52	0
45-54	4	4	0	169	139	30	0
55-64	2	2	0	70	57	13	0
65-74	1	0	1	31	26	5	0
75 & Older	0	0	0	22	21	1	0
Not Reported	0	0	0	80	57	23	0
<b>TOTALS</b>	<b>15</b>	<b>13</b>	<b>2</b>	<b>1,618</b>	<b>1,278</b>	<b>337</b>	<b>3</b>

**Table 7-10  
Pedalcycle Crashes**

Statewide	Total	Urban	Rural
Number Of Crashes	1,893	1,720	173
Persons Killed	15	13	2
Persons Injured	1,618	1,474	144
Property Damage Only	268	240	28

NUMBER OF PEDALCYCLISTS		
Year	Total Killed	Total Injured
1993	24	2,162
1994	21	2,271
1995	31	2,308
1996	30	2,089
1997	31	2,067
1998	23	1,954
1999	26	1,986
2000	25	1,915
2001	29	1,757
2002	15	1,618

**Table 7-11  
Pedalcycle Crash History**

*In 2002, approximately 48,000 pedalcyclists were injured and 662 were killed in traffic crashes across the country. This represented 1.7 percent of all injuries and 1.5 percent of all fatalities from traffic crashes.*

**Section 7: Pedestrian and Pedalcyclist Crashes**

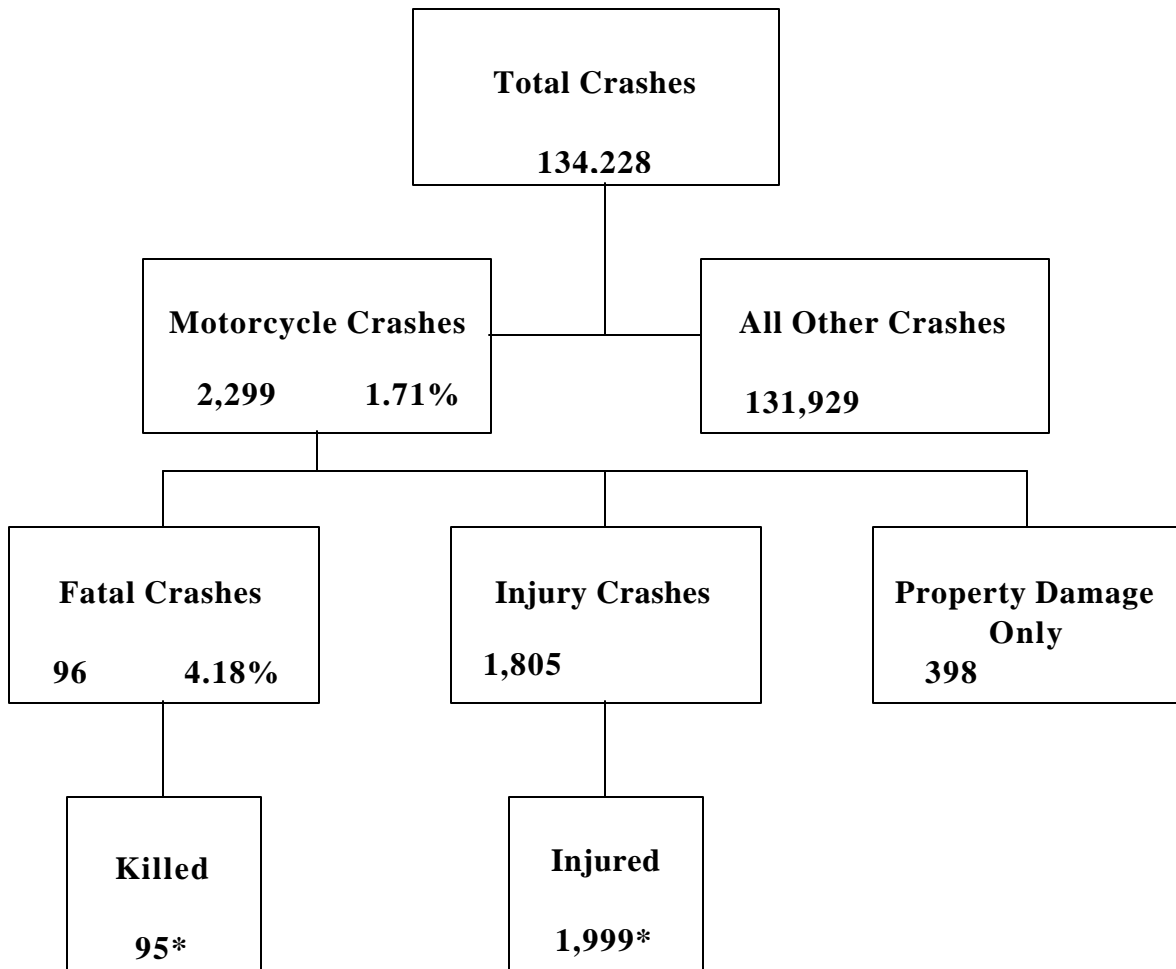
**Table 7-12  
Lighting Conditions - Pedalcyclist Crashes**

Lighting Conditions	Number of Pedalcyclist Crashes			
	Total	Fatal	Injury	PDOs
Daylight	1,481	10	1,266	205
Darkness	313	4	257	52
Dawn or Dusk	96	1	85	10
Not Reported	3	0	2	1
<b>TOTALS</b>	<b>1,893</b>	<b>15</b>	<b>1,610</b>	<b>268</b>

**Table 7-13  
Weather Conditions - Pedalcyclist Crashes**

Weather Conditions	Number of Pedalcyclist Crashes			
	Total	Fatal	Injury	PDOs
Clear	1,706	12	1,454	240
Raining	15	1	11	3
Cloudy	156	2	132	22
Snowing	0	0	0	0
Strong wind	1	0	1	0
Dust	2	0	2	0
Fog	0	0	0	0
Other	1	0	1	0
Not Reported	12	0	9	3
<b>TOTALS</b>	<b>1,893</b>	<b>15</b>	<b>1,610</b>	<b>268</b>

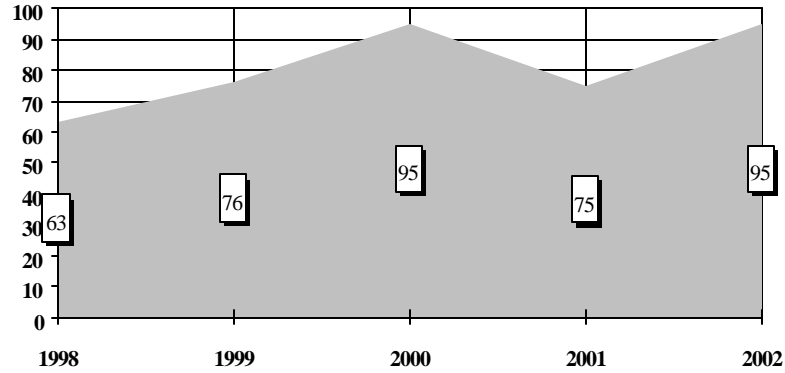
## Section 8: Motorcycle Crashes



\*Includes motorcycle drivers and/or passengers only.

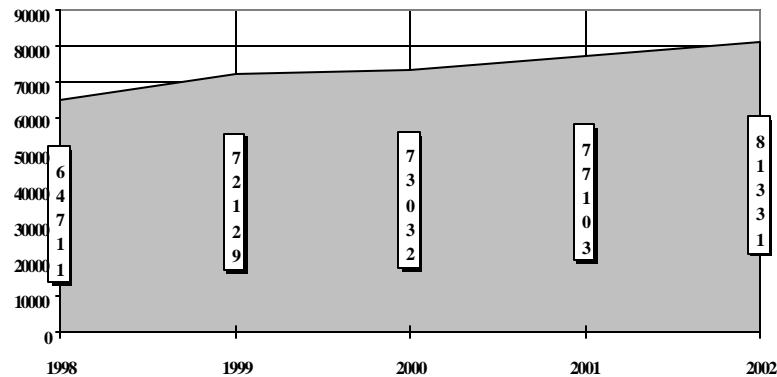
## Section 8: Motorcycle Crashes

**Figure 8-1**  
**Motorcycle Fatalities by Year**



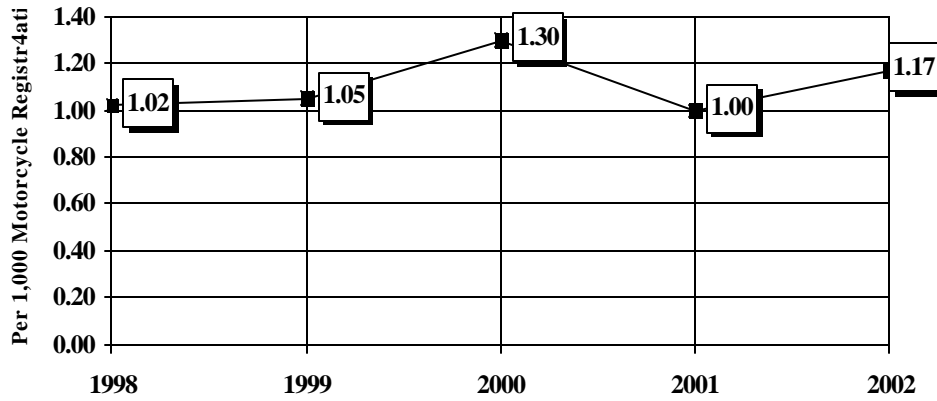
*In 2002, over 3,244 motorcyclists were killed in traffic crashes in the United States, an increase of 177 over the previous year. Arizona's 95 fatalities were an increase of 20 from the previous year.*

**Figure 8-2**  
**Motorcycle Registrations in Arizona**

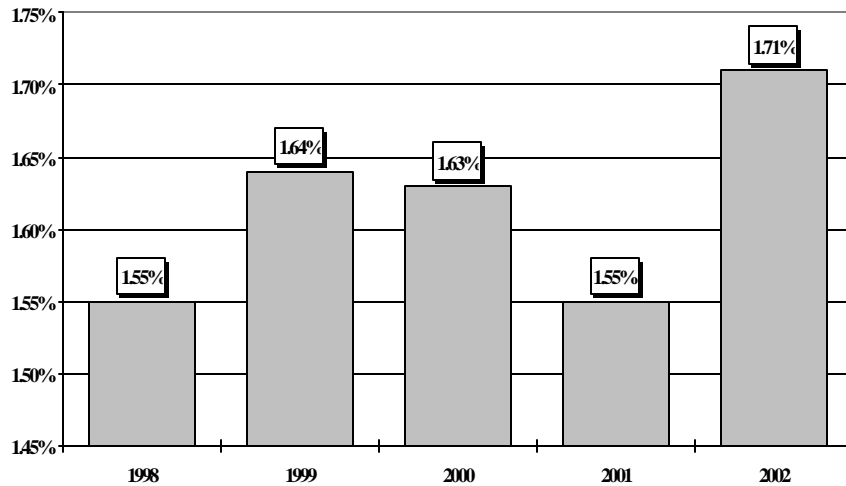


1997-2002 Totals include motorcycles only. Prior years included golf carts, atv's, etc.  
Source: The Motor Vehicle Division of the Arizona Department of Transportation

**Figure 8-3**  
**Motorcycle Fatality Rate per Registered Motorcycle**



**Figure 8-4**  
**Percent of Motorcycle Crashes to All Crashes**



## Section 8: Motorcycle Crashes

**Table 8-1  
Motorcycle Crashes by Type**

Accident Type	Number of Crashes			
	Total	Fatal	Non-Fatal Injury	Property Damage Only
Overturning	19	0	19	0
Pedestrian	14	0	12	2
Motor Vehicle In Transport	1,271	51	939	281
Motor Vehicle On Other Roadway	0	0	0	0
Pedalcyclist	8	0	5	3
Animal	24	0	18	6
Fixed Object	262	30	206	26
Other Object	40	0	31	9
Misc.	660	15	574	71
Not Reported	1	0	1	0
<b>TOTALS</b>	<b>2,299</b>	<b>96</b>	<b>1,805</b>	<b>398</b>

**Table 8-2  
Motorcycle Crashes - Lighting Conditions**

Lighting Condition	Number of Crashes		
	Total	Fatal	Injury
Daylight	1,545	53	1,222
Dawn or Dusk	134	5	110
Darkness	616	38	469
Not Reported	4	0	4
<b>Totals</b>	<b>2,299</b>	<b>96</b>	<b>1,805</b>

**Table 8-3  
Motorcycle Crashes - Road Conditions**

Road Surface	Number of Crashes		
	Total	Fatal	Injury
Dry	2,067	87	1,615
Wet	38	2	30
Snowy/icy	8	0	6
Other	75	1	68
Not Reported	111	6	86
<b>Totals</b>	<b>2,299</b>	<b>96</b>	<b>1,805</b>

**Table 8-4**  
**Motorcycle Crashes - Land Use**

	Number of Crashes and % of Total				
	Total	Rural	% of Total	Urban	% of Total
Crashes	2,299	636	27.66%	1,663	72.34%
Fatalities	96	45	46.88%	51	53.12%
Injuries	1,805	506	28.03%	1,299	71.97%

**Table 8-5**  
**Operators' Age - Motorcycle Crashes**

Age of Operator	Total No. of Operators	Percent of Total	Number of operators	
			Fatal Crashes	Injury Crashes
15 & Younger	44		1	41
16	15		0	13
17	23		2	19
18-19	106		2	90
20-24	337		11	273
25-34	516		27	406
35-44	503		17	410
45-54	453		22	352
55-64	193		12	155
65-74	46		1	36
75 & Older	17		1	57
Not Reported	96			
<b>TOTALS</b>	<b>2,349</b>		<b>96</b>	<b>1,852</b>

**Table 8-6**  
**Alcohol-Related Motorcycle Crashes**

Total number of impaired operators	201
Total number of fatal crashes	35
Total number of injury crashes	151

*Nationally, 32% of all fatally injured motorcycle operators were intoxicated.*

*In Arizona, alcohol was involved in 36% of all fatal motorcycle crashes.*



## Section 8: Motorcycle Crashes

### Table 8-7

#### Motorcycle Operators Involved in Fatal Crashes by License Status\*

License Status	2000		2001		2002	
	Total Fatal Crashes	Percent of Fatal Crashes	Total Fatal Crashes	Percent of Fatal Crashes	Total Fatal Crashes	Percent of Fatal Crashes
No license	5	5.89%	5	6.02%	5	5.21%
Invalid	36	36.27%	26	31.33%	28	29.17%
Valid	58	56.86%	51	61.45%	62	64.58%
Unknown	1	0.98%	1	1.20%	1	1.04%
<b>TOTALS</b>	<b>100</b>	<b>100.00%</b>	<b>83</b>	<b>100.00%</b>	<b>96</b>	<b>100.00%</b>

\*Note: includes only motorcycle operators involved in fatal crashes.

### Table 8-8

#### Motorcycle Operator's Helmet Use

Severity of Injury	Number of Motorcycle Crashes							
	Helmet Used	% of Total	No Helmet	% of Total	Unknown	% of Total	Total	% of Total
No injury	112	16.30%	176	17.05%	142	22.54%	430	18.31%
Possible injury	110	16.01%	138	13.37%	102	16.19%	350	14.90%
Non-incapacitating	279	40.61%	392	37.98%	218	34.60%	889	37.85%
Incapacitating	160	23.29%	267	25.87%	111	17.62%	538	22.90%
Fatality	22	3.20%	53	5.14%	15	2.38%	90	3.83%
Unknown	4	0.58%	6	0.58%	42	6.67%	52	2.21%
<b>TOTALS</b>	<b>687</b>	<b>100.00%</b>	<b>1,032</b>	<b>100.00%</b>	<b>630</b>	<b>100.00%</b>	<b>2,349</b>	<b>100.00%</b>

### Table 8-9

#### Motorcycle Passenger Helmet Use

Severity of Injury	Number of Motorcycle Crashes							
	Helmet Used	% of Total	No Helmet	% of Total	Use Unknown	% of Total	Total	% of Total
No injury	11	15.07%	23	14.56%	15	30.00%	49	17.44%
Possible injury	15	20.55%	15	9.49%	8	16.00%	38	13.52%
Non-incapacitating	29	39.73%	77	48.73%	17	34.00%	123	43.77%
Incapacitating	16	21.92%	37	23.42%	8	16.00%	61	21.71%
Fatality	1	1.37%	4	2.53%	0	0.00%	5	1.78%
Unknown	1	1.37%	2	1.27%	2	4.00%	5	1.78%
<b>TOTALS</b>	<b>73</b>	<b>100.00%</b>	<b>158</b>	<b>100.00%</b>	<b>50</b>	<b>100.00%</b>	<b>281</b>	<b>100.00%</b>

*NHTSA estimates that helmets saved 692 motorcyclists' lives in 2002, and that 449 more could have saved if all motorcyclists had worn helmets.*

**Table 8-10**  
**Motorcycle Operators and Passengers Killed and Injured**

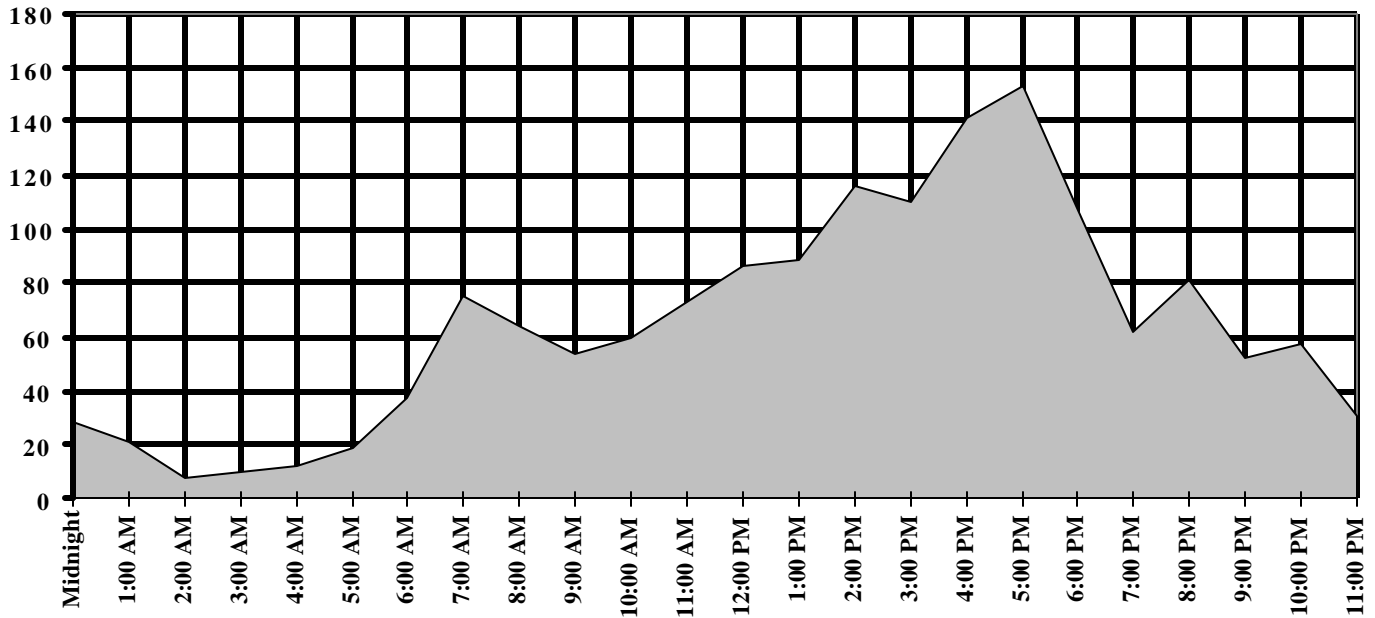
Age of Victims	Number Killed			Number Injured			
	Total	Male	Female	Total	Male	Female	Unk.
0 - 4	0	0	0	3	1	2	0
5 - 9	0	0	0	5	2	3	0
10 - 14	0	0	0	41	28	13	0
15 - 19	5	5	0	164	135	29	0
20 - 24	12	9	3	287	253	34	0
25 - 34	26	25	1	428	384	44	0
35 - 44	17	15	2	438	353	84	1
45 - 54	21	19	2	377	323	54	0
55 - 64	11	10	1	161	140	21	0
65 - 74	3	1	2	34	31	3	0
75 & Older	0	0	0	13	11	2	0
Not Reported	0	0	0	48	37	11	0
<b>TOTALS</b>	<b>95</b>	<b>84</b>	<b>11</b>	<b>1,999</b>	<b>1,698</b>	<b>300</b>	<b>1</b>

**Table 8-11**  
**Motorcycle Operator Errors**

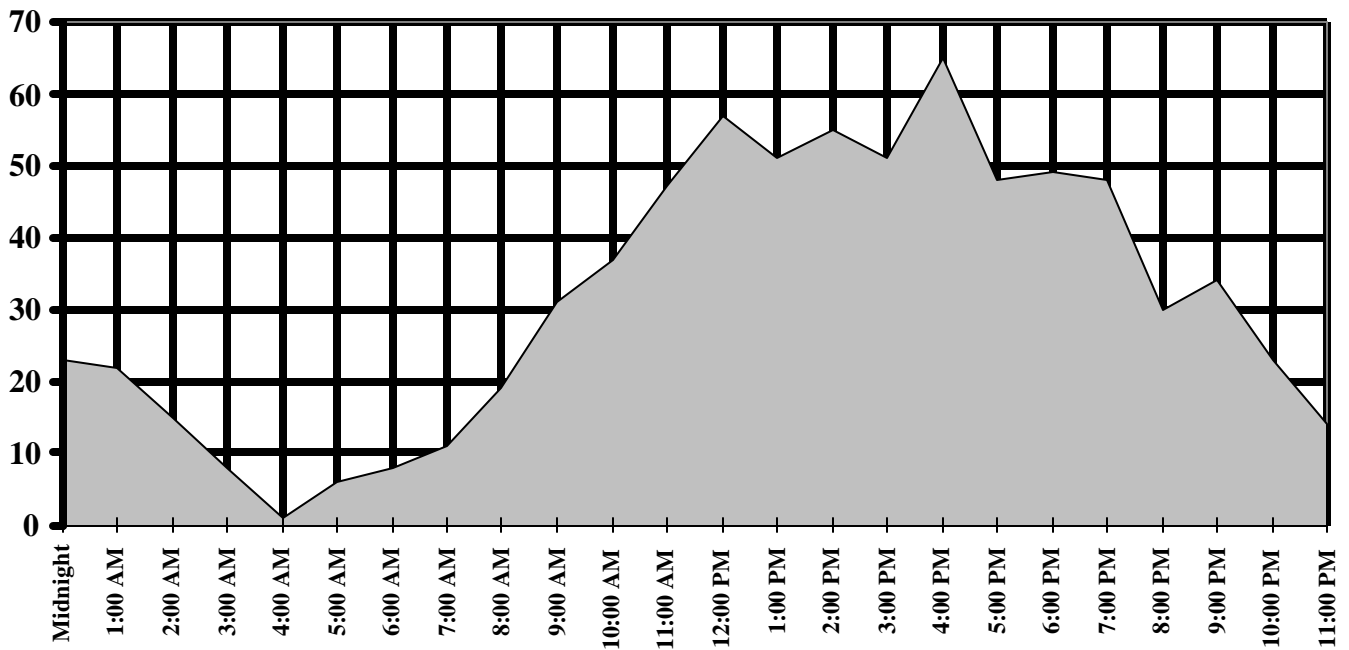
Contributing Circumstances	ALL CRASHES		FATAL CRASHES		INJURY CRASHES	
	Number Of Cases	Percent Of Units	Number Of Cases	Percent Of Units	Number Of Cases	Percent Of Units
Exceeding lawful speed limit	53	2.26%	10	10.42%	41	2.21%
Speed too fast for conditions	629	26.78%	30	31.25%	513	27.70%
Failed to yield	96	4.09%	0	0.00%	77	4.16%
Passed stop sign	10	0.43%	3	3.13%	5	0.27%
Disregarded traffic signal	24	1.02%	2	2.08%	20	1.08%
Drove left of center	17	0.72%	2	2.08%	1	0.05%
Followed too closely	35	1.49%	0	0.00%	27	1.46%
Driver inattention	134	5.70%	3	3.13%	111	5.99%
Had been drinking	201	8.56%	35	37.50%	206	11.12%
Other improper driving	50	2.13%	2	2.08%	48	2.59%
Faulty or Missing Equip.	21	0.89%	0	0.00%	19	1.03%
Other	98	4.17%	3	3.13%	87	4.70%
No improper driving	980	41.72%	6	6.25%	696	37.58%
Not Reported	1	0.04%	0	0.00%	1	0.05%
<b>TOTALS</b>	<b>2,349</b>	<b>100.00%</b>	<b>96</b>	<b>100.00%</b>	<b>1,852</b>	<b>100.00%</b>

Section 8: Motorcycle Crashes

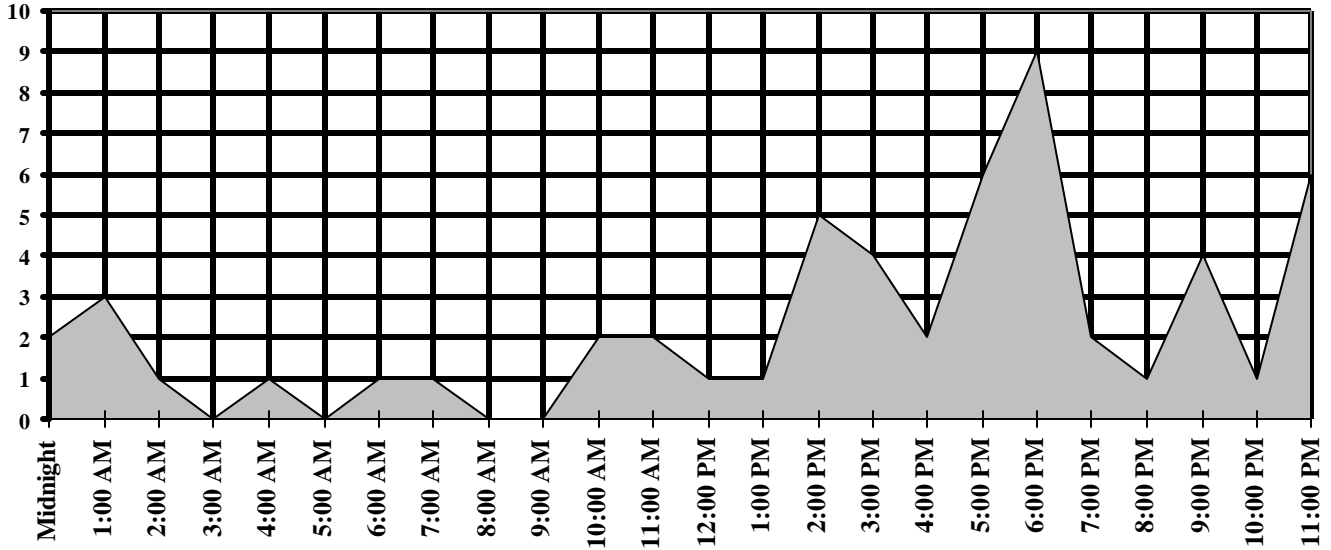
**Figure 8-5**  
**Motorcycle Crashes by Time of Day**  
**Weekdays**



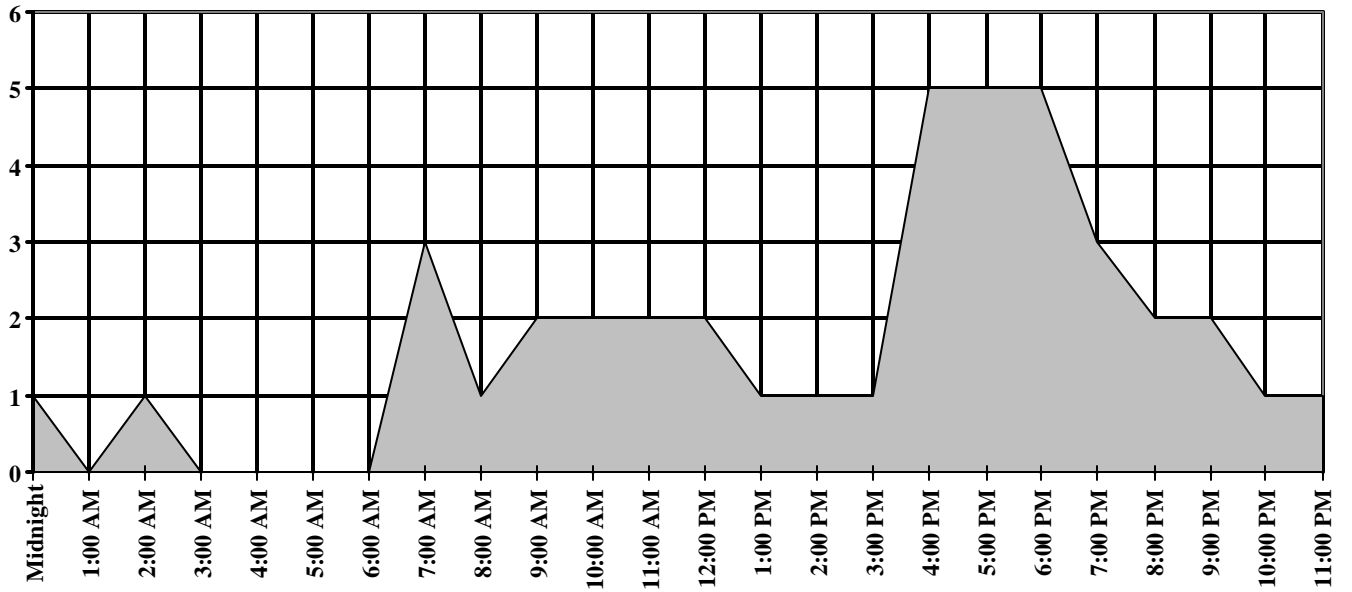
**Figure 8-6**  
**Weekends**



**Figure 8-7**  
**Fatal Motorcycle Crashes by Time of Day**  
**Weekdays**

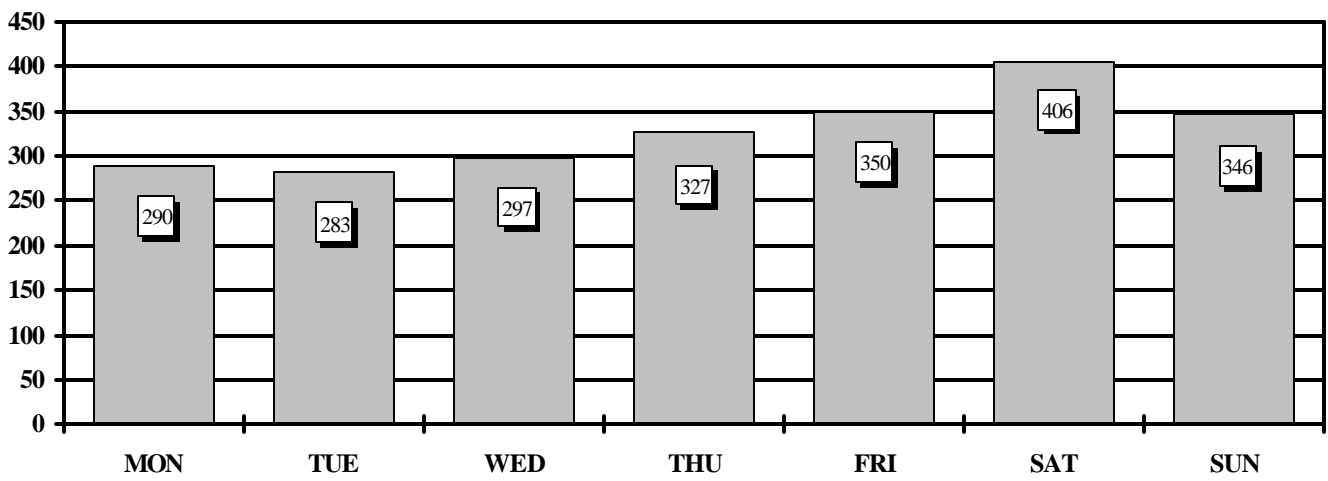


**Figure 8-8**  
**Fatal Motorcycle Crashes by Time of Day**  
**Weekends**

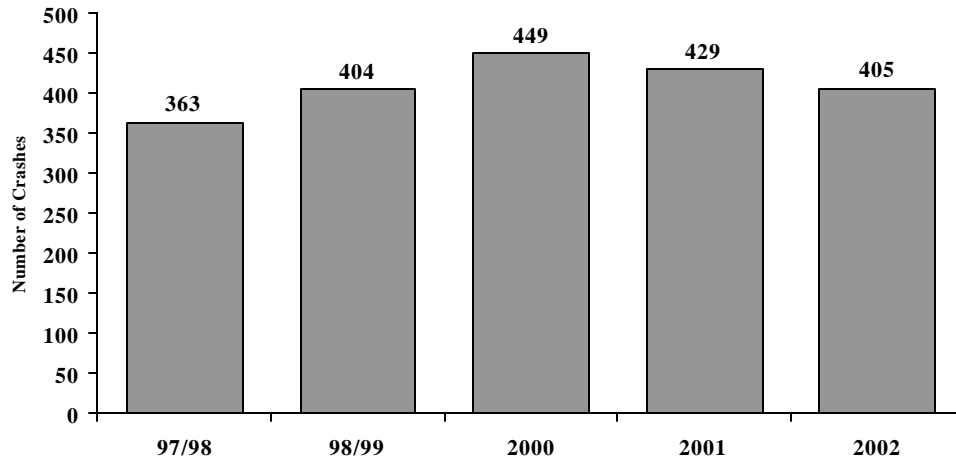


## Section 8: Motorcycle Crashes

**Figure 8-9**  
**Motorcycle Crashes by Day of Week**



## Section 9: School Bus Crashes



**Table 9-1  
School Bus Driver Errors**

	Number of Drivers and % of Total	
	Total	%
No Improper Driving	212	52.35%
Speed not Reasonable & Proper	28	6.91%
Failed to Yield	30	7.41%
Following too Closely	6	1.48%
Improper Turn	22	5.43%
Drove in Opposing Lane	3	0.74%
Other	9	2.22%
Unknown	22	5.43%
Inattention	64	15.80%
No Passing Zone	3	0.74%
Unsafe Lane Change	6	1.48%
<b>TOTAL DRIVERS</b>	<b>405</b>	<b>100.00%</b>

*\* Beginning with the year 2000 school bus crash data is based upon the calendar year. Prior issues were based on school session years.*

Section 9: School Bus Cashes

**Table 9-2  
School Bus Crash History**

	97/98	98/99	2000	2001	2002
<b>Injuries and Fatalities</b>					
<b>Pupils</b>					
<b>Killed</b>	0	0	1	0	0
<b>Injured</b>	98	95	139	128	81
<b>Bus Drivers</b>					
<b>Killed</b>	0	0	0	0	1
<b>Injured</b>	26	17	20	22	20
<b>Property Damage Only Crashes</b>	239	424	433	289	280
<b>Crash by Time of Day</b>					
<b>A.M.</b>	163	179	208	199	169
<b>P.M.</b>	200	225	241	230	236
<b>Weather Conditions:</b>					
Not Reported	0	3	1	0	2
Clear and Dry	293	346	380	355	356
Rain	16	17	12	17	7
Snow or Ice	10	2	4	16	2
Dusty or Windy	1	2	1	1	1
Fog	0	1	2	0	0
Cloudy	43	27	49	40	37

## **Acknowledgements**

The Crash Analysis Unit of the Arizona Department of Transportation would not be able to produce this report without the fine work of the following individuals who were responsible for the coding and keying-in of all our crash data for this publication. We wish to express our heartfelt thanks to each of you and keep up the good work!

### **Coders and Keyers**

**Yvonne Aparicio  
Debora Bauer  
Alicia Brooks  
Jessica Fernandez  
Pat Geans  
Willie Gilder  
Kathleen Mullins  
Pamela Pelech  
Francine Reifsnyder  
Randy Reifsnyder  
Anna Valdez  
Mary Kay Weachter**

### **Additional Key Staff**

**Dave Gibson  
Margaret Muniz**

Special gratitude to our other providers of data and information including:

***The National Center for Statistics and Analysis, Research and Development  
National Highway Transportation Safety Administration  
The Arizona State Data Center, Arizona Department of Economic Security  
The Office of Planning, Evaluation, and Public Health Statistics, Arizona  
Department of Health Services  
The Information Technology Group, Arizona Department of Transportation  
The National Safety Council  
Motor Vehicle Division, Arizona Department of Transportation***

In addition, we wish to acknowledge the men and women working in law enforcement and public safety agencies that are responsible for the production of all crash data in the field. We rely on their accurate completion of crash reports and without their attention to detail we would be unable to maintain a meaningful database. Thanks!!