

INSTRUCTIONS FOR OBTAINING STORMWATER DISCHARGE PERMIT AUTHORIZATION FOR ADOT CONSTRUCTION PROJECTS

3.1 INTRODUCTION

ADOT is authorized to discharge stormwater to waters of the United States under a Statewide Stormwater Discharge Permit issued by the Arizona Department of Environmental Quality (ADEQ) under the Arizona Pollutant Discharge Elimination System (AZPDES) program. This permit, effective September 19, 2008 through September 18, 2013, is authorized statewide, except for Indian Country, and covers stormwater and other specified discharges to waters of the United States. Specific coverage includes:

- Activities associated with ADOT operated Municipal Separate Storm Sewer Systems (MS4)
- Activities associated with construction activities initiated and controlled by ADOT
- Facilities associated with industrial and maintenance activities owned and operated by ADOT

Contractors working under contract to ADOT must obtain authorization to discharge stormwater under the AZPDES Arizona Construction General Permit (AZCGP).

This chapter describes the steps that operators follow to comply with the AZCGP and the steps ADOT (owner) will follow to comply with the ADOT Statewide Stormwater Discharge Permit requirements. Federal Construction General Permit (FCGP) instructions, applicable to projects in Indian Country in Arizona, are described at the end of this chapter. Table 3.1 summarizes the steps in the permit authorization process and includes FCGP, AZCGP and ADOT Statewide Stormwater Discharge Permit citations.

Requirements in each step are discussed briefly and individual responsibilities identified in a chart with each step. Applicable discharge permit citations are listed in italics immediately after the step title. **Erosion and pollution control is a shared obligation among ADOT, the general contractor and subcontractors to protect the environment. It is neither the general contractor's nor ADOT's sole responsibility to comply with AZCGP, FCGP or ADOT Statewide Stormwater Discharge Permit requirements.**

3.2 STEP 1: PREPARE A STORMWATER POLLUTION PREVENTION PLAN (SWPPP)

ADOT Statewide Stormwater Discharge Permit Section 5.2

AZCGP Part III

FCGP Part 7.

A complete SWPPP shall be developed by the Erosion Control Coordinator (ECC) hired by the contractor and approved by ADOT in accordance with the Standard Specifications and Special Provisions. Refer to Chapter 4 for information on developing a SWPPP. Two copies of the draft SWPPP shall be submitted to the ADOT Resident Engineer at the preconstruction conference if possible, but no later than 14 calendar days after ADOT approval of the contractor's ECC.

INSTRUCTIONS FOR OBTAINING STORMWATER DISCHARGE PERMIT AUTHORIZATION FOR ADOT CONSTRUCTION PROJECTS

Steps for Obtaining Construction General Permit Authorization					
Step	Action	ADOT 2008 Statewide SW Permit Citation	AZCGP 2008 Citation	FCGP 2012 Citation	Information and Forms
1	Prepare Stormwater Pollution Prevention Plan (SWPPP)	Section 5.2	Part III	Part 7	EPCM: Chapter 4, Appendix A; Contract Documents; ADOT Stored Specification 104SWDEQ
2	Certify the SWPPP	Sections 5.3.1, 11.3.4	Parts III.A.3, VIII.J	Part 7.2.15 App. I.11.4, App. I.11.5	EPCM: Appendix A: AZPDES SWPPP Index Sheet, NPDES SWPPP Index Sheet
3	Submit Notice of Intent (NOI)	Section 5.3.1.1	Parts II.A, II.B	Parts 1.4 1.4.1, 1.4.2, 7.1.1	EPCM: Appendix A: NOI ADEQ website Smart NOI websites
4	Retain SWPPP and NOI at the job site	Sections 5.2.1.5, 5.3.1	Part III.G	Parts 7.2.16, 7.3	Project Specifications
5	Implement the SWPPP	Section 5.2.1.2	Part III.A	Part 7	EPCM: Appendix A: ADOT AZPDES Inspection Checklist; Maintenance, record keeping, site-monitoring forms; Project Specifications
6	Inspect the BMPs regularly and after each storm event	Section 5.2.5	Part IV.H	Part 4	ADOT Inspection Form Appendix A Project Specifications
7	Adjust SWPPP to fit site conditions	Section 5.2.6	Part IV.I.2	Part 7.4.1	Project Specifications
8	Maintain an updated SWPPP	Section 5.2.6	Parts III.E, IV.H.5	Part 7.4	Project Specifications
9	Maintain the BMPs	Section 5.2.4	Part IV.I	Part 5	EPCM: Chapter 5, Appendices A, B
10	Evaluate job site to determine Final Stabilization	Sections 5.3.2, 12	Part II.C.1.a	Parts 2.2.2 App. A, page A-5	EPCM: Appendix A: Methodology for Determining Final Stabilization Project Specifications
11	Submit Notice of Termination (NOT)	Sections 5.3.1.1, 5.3.2.	Part II.C	Part 8	EPCM: Appendix A: NOT ADEQ website Project Specifications
12	Retain records after project completion for 3 years (5 years for ADOT)	Sections 5.2.5.6, 11.16	Parts VII, VIII.I.2	App. I.15	Project Specifications

Follow the ADOT Statewide Stormwater Permit if ADOT is the owner and operator.

Table 3.1: Steps for Obtaining Construction General Permit Authorization

INSTRUCTIONS FOR OBTAINING STORMWATER DISCHARGE PERMIT AUTHORIZATION FOR ADOT CONSTRUCTION PROJECTS

Step 1 Responsibilities	
ADOT	Contractor
Provide supporting documents to complete the SWPPP	Designate a qualified ECC who will prepare the SWPPP
Review credentials of ECC selected by the contractor	Prepare and submit the SWPPP
Review draft SWPPP submitted by the contractor and provide comments	

3.2.1 Project Document BMPs

During the project design process, ADOT and the project design team will utilize BMPs from this Manual and BMPs developed for unique project conditions to prepare:

- Erosion and pollution control plans, entitled “*Erosion and Pollution Control Plans*”
- Erosion and pollution control details, entitled “*Erosion and Pollution Control Details*”
- Special Provisions to Section 810 of the Standard Specifications

The project documents will provide direction and specific expectations to the contractor regarding erosion control and stormwater pollution prevention. However, these documents shall not be considered a complete SWPPP and shall not replace the contractor’s SWPPP, since the project documents are prepared assuming typical construction practices and may not reflect the contractor’s actual methods of construction, access requirements or project phasing. Instead, the contractor shall use the project documents as a guide in developing the project SWPPP.

3.3 STEP 2: CERTIFY THE SWPPP

ADOT Statewide Stormwater Discharge Permit Section 5.3.1, Section 11.3.4

AZCGP Part III.A.3, Part VIII.J

FCGP Part 7.2.15., Appendix I.11.4., Appendix I.11.5.

ADOT, the general contractor and any subcontractors that are responsible for constructing the erosion and pollution controls must certify the SWPPP. In the case of ADOT local government projects involving federal aid, the appropriate municipality must also certify the SWPPP. Specific certification and signatory requirements are defined in the AZCGP and ADOT Statewide Stormwater Discharge Permit citations listed above. The certifications shall occur after award of the contract and before construction begins.

As described earlier, it is the obligation of all personnel involved in the construction process to protect the environment. The certification requirement reinforces the fact that it takes a team effort to properly control stormwater pollution and that responsibility is shared equally among ADOT and its contractors and subcontractors.

The following certification is required by ADEQ and is included on the ADOT NPDES and AZPDES SWPPP Index Sheets Refer to Appendix C for sample Index Sheets.

“I certify under penalty of law that this document and all attachments were prepared under my direction or supervision in accordance with a system designed to assure that qualified personnel properly gathered and evaluated the information submitted. Based on my inquiry of the person

3

INSTRUCTIONS FOR OBTAINING STORMWATER DISCHARGE PERMIT AUTHORIZATION FOR ADOT CONSTRUCTION PROJECTS

or persons who manage the system, or those persons directly responsible for gathering the information, the information submitted is, to the best of my knowledge and belief, true, accurate, and complete. I am aware that there are significant penalties for submitting false information, including the possibility of fine and imprisonment for knowing violations.”

Step 2 Responsibilities	
ADOT	Contractor
Certify the SWPPP	Certify the SWPPP

Note: The FCGP, AZCGP and the ADOT Statewide Stormwater Discharge Permit define authorized signatories for the SWPPP and other permit-required documents. Refer to the Permit citations listed directly below 3.3 STEP 2: CERTIFY THE SWPPP to ensure compliance with the signatory requirements.

3.4 STEP 3: SUBMIT NOTICE OF INTENT (NOI)

ADOT Statewide Stormwater Discharge Permit Section 5.3.1.1

AZCGP Part II.A., Part II.B.

FCGP Part 1.4., Part 1.4.1., Part 1.4.2., Part 7.1.1.

The NOI form serves as a promise that the operator(s) will comply with the AZCGP conditions. ADOT does not need to file an NOI as it has promised to comply with regulations under the ADOT Statewide Stormwater Discharge Permit.

A complete and accurate NOI form must be prepared by a construction site owner or operator and signed by a qualified signatory as defined in AZCGP Part VIII.J to receive coverage under the AZCGP. An operator(s) is any person associated with the project that has control over the construction plans or specifications or day-to-day operational control of the site (the Contractor, the ECC, and any Subcontractor directly associated with installation or maintenance of BMPs). Part III.B.1 of the AZCGP provides a complete definition of operator.

The NOI must be submitted to ADEQ allowing for up to a two full business-day review period before any construction activities occur at the site. If the project is located within or has the potential to discharge to an MS4, a copy of the certificate authorizing permit coverage must also be submitted to the MS4 or local authority(s). A list of MS4 municipalities in Arizona is located on the ADEQ website <http://www.azdeq.gov/environ/water/permits/stormwater.html#ms4>. Also, contractors operating under an approved local erosion and pollution control plan, grading plan, or stormwater management plan shall send a copy of the certificate authorizing permit coverage to the local authority(s). If the project site is located within 1/4 mile of outstanding or impaired waters, the NOI must be submitted at least 32 business days before any construction activities occur at the site.

A SWPPP that satisfies the conditions of the AZCGP must be completed and certified prior to submitting the NOI to ADEQ. It is not necessary that the SWPPP be included with the NOI, but the SWPPP must always be available for ADEQ review. The SWPPP must be submitted to ADEQ with the NOI if the construction site is located within 1/4 mile of a outstanding or impaired water.

INSTRUCTIONS FOR OBTAINING STORMWATER DISCHARGE PERMIT AUTHORIZATION FOR ADOT CONSTRUCTION PROJECTS

The most efficient method for filing the NOI is to use the ADEQ Smart NOI online program at <http://az.gov/app/smartnoi/>.

Alternatively, the NOI form may be submitted by certified mail or hand delivery to:

Arizona Department of Environmental Quality
Surface Water Section / Stormwater & General Permits Unit
1110 W. Washington Street, 5415A-1
Phoenix, AZ 85007

Forms may also be faxed to 602-771-4528.

The NOI form and detailed instructions for completing the form are available at the ADEQ website, <http://azdeq.gov/function/forms/appswater.html>. A copy of the NOI form is included in Appendix C of this manual.

Receipt and acceptance of an NOI is documented by issuance of an authorization certificate and number.

Refer to section 3.14.1 for FCGP (Indian Country only) NOI filing information.

Step 3 Responsibilities	
ADOT	Contractor
Review contractor's(s) NOI	Prepare an NOI after certification of the SWPPP
Ensure contractors(s) file an NOI	File an NOI

3.5 STEP 4: RETAIN DOCUMENTS AT THE JOB SITE

ADOT Statewide Stormwater Discharge Permit Section 5.2.1.5, Section 5.3.1

AZCGP Part III.G.

FCGP Part 7.2.16, Part 7.3

Table 3.2 lists documents that must be kept with the SWPPP and retained on the job site, or a location easily accessible to the project site during normal business hours, throughout the construction process.

Step 4 Responsibilities	
ADOT	Contractor
The Engineer/Inspector will keep document copies at the construction office or in their vehicles at the project site	Post the authorization # 'AZCON-_____' at main entrance to construction site
	Keep copy of authorization certificate in the SWPPP
	Keep SWPPP and all attachments in the construction office or in the contractor's vehicle at the project site

INSTRUCTIONS FOR OBTAINING STORMWATER DISCHARGE PERMIT AUTHORIZATION FOR ADOT CONSTRUCTION PROJECTS

Documents to be Retained on the Job Site with the SWPPP					
Document	ADOT Statewide SW Permit Citation	AZCGP 2008 Citation	FCGP 2012 Citation	References	
Copy of the AZPDES AZCGP OR Copy of the current NPDES FCGP	Section 5.3.1	Part III.D	Part 7.2.16	http://www.azdeq.gov/enviroin/water/permits/download/2008_cgp.pdf http://www.epa.gov/npdes/pubs/cgp/2008_finalpermit.pdf	
Copy of the NOI submitted to ADEQ OR Copy of the NOI submitted to EPA	Section 5.3.1	Part II.B	Part 7.2.16	http://az.gov/webapp/noi/main.do http://cfpub1.epa.gov/npdes/stormwater/enoi.cfm	
Copy of the authorization certificate with authorization number received from ADEQ OR EPA	Section 5.3.1.2	Part II.B.3	Part 7.2.16	Provided from ADEQ OR EPA via mail, fax, or electronically via the Smart NOI OR eNOI system after NOI is approved	
Copy of Environmental Clearance Letter	-	-	-	ADOT environmental clearance documents ADOT Erosion and Pollution Control Manual Appendix	
Identification of any municipality that received a copy of the authorization certificate	Section 5.3.1	Part III.D	-		
Copies of any other agreements (such as 404 permits, local grading permits, etc.) with any state, local, or federal agencies that would affect the provisions or implementation of the SWPPP	Section 5.3.1	Part III.D	Part 7.2.14	ADOT environmental clearance documents	

Table 3.2: Documents to be Retained on the Job Site with the SWPPP

INSTRUCTIONS FOR OBTAINING STORMWATER DISCHARGE PERMIT AUTHORIZATION FOR ADOT CONSTRUCTION PROJECTS

3.6 STEP 5: IMPLEMENT THE SWPPP

ADOT Statewide Stormwater Discharge Permit Section 5.2.1.2

AZCGP Part III.A.

FCGP Part 7.

After the NOI is accepted and an authorization number received, construction may begin that will require implementation of the SWPPP. The erosion and pollution controls (i.e., the BMPs) shall be constructed in accordance with the SWPPP.

The SWPPP is intended to be a dynamic plan that must be revised in response to unanticipated or changing conditions during construction. Making changes to the Plan where it is not effective is also a requirement of the permit. Any changes to the plan shall be noted and dated in the plan.

Step 5 Responsibilities	
ADOT	Contractor
Monitor and record weekly-extended weather forecasts	Monitor and record weekly-extended weather forecasts
Discuss weather forecasts at scheduled weekly progress meetings	Discuss weather forecasts at scheduled weekly progress meetings
	If probability of precipitation is high for the project area, verify that BMPs are properly installed and maintained
	If probability of precipitation is high for the project area, install additional erosion control measures as directed by the Engineer
	Within 14 days, install stabilization measures where construction activities have temporarily or permanently ceased. AZCGP Part IV.B.2

The ADOT Resident Engineer and the contractor are jointly responsible for implementing the SWPPP and maintaining dated records of:

- Major grading activities
- Areas where construction activities have temporarily or permanently stopped
- Installation of stabilization measures (BMPs)
- Delays and reasons for delays in installation of stabilization measures

These records must be included in the SWPPP. A copy of a 'Grading and Stabilization Record' used to track grading and stabilization activities is located in Appendix C of this Manual and Appendix D of the ADOT SWPPP Template, http://www.azdot.gov/Inside_ADOT/OES/Water_Quality/Stormwater/Other_Resources.asp.

3.7 STEP 6: INSPECT BMPS REGULARLY

ADOT Statewide Stormwater Discharge Permit Section 5.2.5

AZCGP Part IV.H.

FCGP Part 4.

Regular site inspections are required to ensure that BMPs are functioning properly and that the SWPPP is properly maintained. Inspections must be performed by qualified personnel (i.e. ECC)

INSTRUCTIONS FOR OBTAINING STORMWATER DISCHARGE PERMIT AUTHORIZATION FOR ADOT CONSTRUCTION PROJECTS

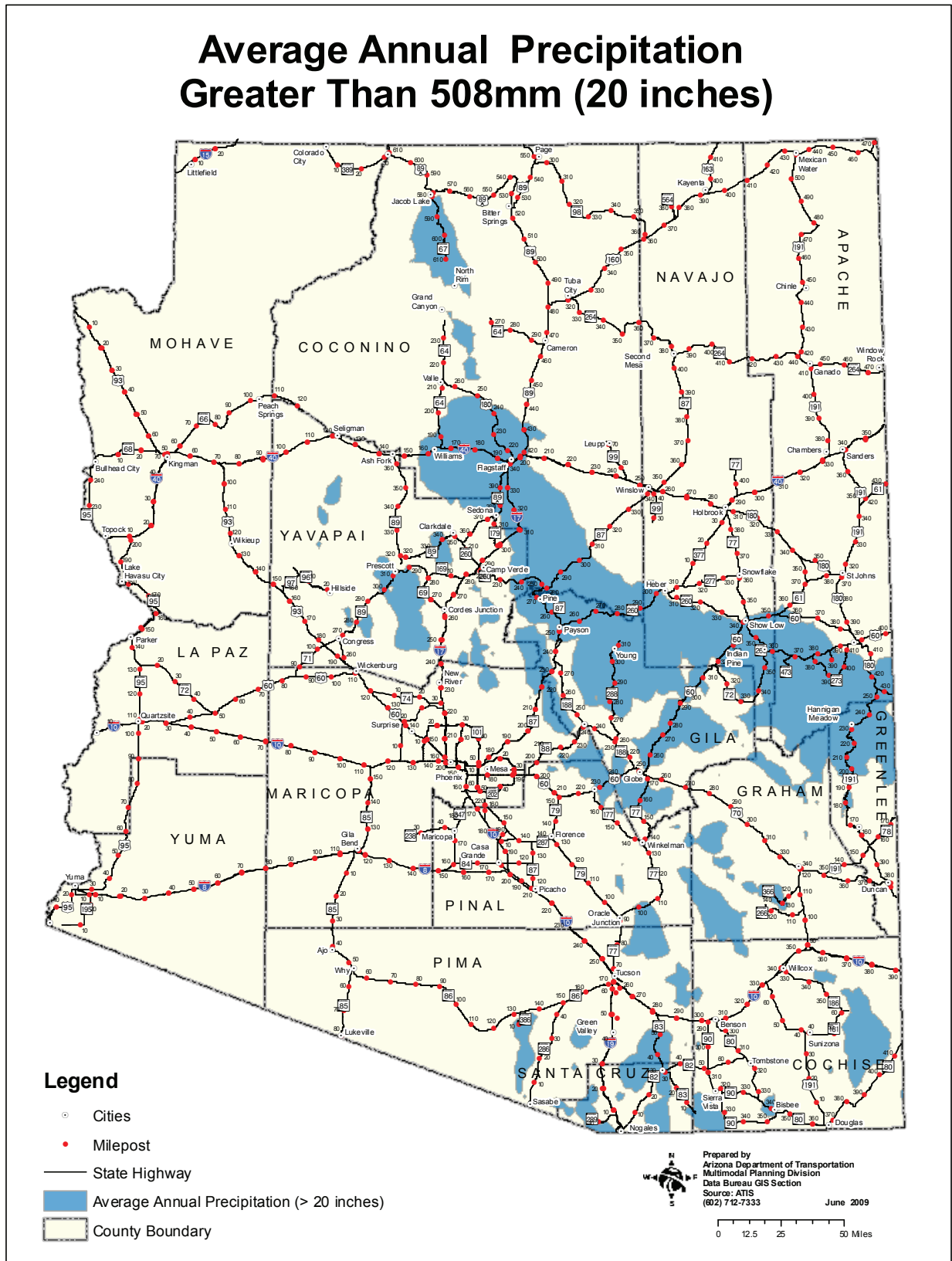


Figure 3.1: Average Annual Precipitation

INSTRUCTIONS FOR OBTAINING STORMWATER DISCHARGE PERMIT AUTHORIZATION FOR ADOT CONSTRUCTION PROJECTS

as described in the AZCGP and the ADOT Statewide Stormwater Discharge Permit.

Routine inspection is required every 7 calendar days OR once every 14 calendar days and also within 24 hours after a rainfall event of 1/2 inch or greater. Reduced inspection frequency may apply under certain permit-specified conditions. For example, the ADOT Statewide Stormwater Discharge Permit allows for reduced inspections in areas of the state that receive less than 20 inches average annual rainfall and construction occurs during the seasonal dry period. Under these conditions, inspections are required monthly, anytime rain is predicted and within 24 hours following a rainfall event of 1/2 inch or greater. Figure 3.1 illustrates locations in Arizona where the average annual rainfall is greater than 20 inches. Refer to the applicable permit for additional information on reduced inspection frequency.

Inspections must include all areas of the site disturbed by construction activity, staging areas and areas used for storage of materials that are exposed to precipitation. A minimum list of inspection items is provided in AZCGP Part IV.H.3 and in the ADOT Statewide Stormwater Discharge Permit section 5.2.5.4. Minimum Inspection Report contents are listed in the AZCGP Part IV.H.4 and minimum Construction Compliance Evaluation Report (Inspection Report) contents are listed in the ADOT Statewide Stormwater Discharge Permit section 5.2.5.5. The Report and records of any follow-up actions taken shall be retained as part of the SWPPP.

Step 6 Responsibilities	
ADOT	Contractor
Inspections of BMPs	Inspections of BMPs and inspection reports
Approval of follow-up actions deemed necessary following inspections	Installation and maintenance of all BMPs
	Required follow-up actions within time limits described in the permit and project specifications

3.8 STEP 7: ADJUST THE SWPPP TO FIT SITE CONDITIONS

ADOT Statewide Stormwater Discharge Permit Section 5.2.6

AZCGP Part IV.I.2.

FCGP Part 7.4.1.

The operator shall complete follow-up actions based on results of the inspection process within 4 calendar days or by the next anticipated storm event following the inspection, whichever is sooner, per ADOT Standard Specification Paragraphs 104.09.F.2, or as required by the project Special Provisions.

Step 7 Responsibilities	
ADOT	Contractor
Approval of changes or additions to the SWPPP based upon specific site conditions	Installation and adjustment of BMPs necessary as a result of inspections
	Update SWPPP to reflect adjustments

3

INSTRUCTIONS FOR OBTAINING STORMWATER DISCHARGE PERMIT AUTHORIZATION FOR ADOT CONSTRUCTION PROJECTS

3.9 STEP 8: MAINTAIN AN UPDATED SWPPP

ADOT Statewide Stormwater Discharge Permit Section 5.2.6

AZCGP Part III.E, Part IV.H.5.

FCGP Part 7.4.

It is imperative that the SWPPP be kept current with the changes and adjustments made in the field. Failure to update the SWPPP is considered a violation of AZCGP, FCGP, the ADOT Statewide Stormwater Discharge Permit and the Clean Water Act conditions, and is grounds for enforcement action, permit termination, revocation and reissuance, modification, or denial of permit renewal application.

The SWPPP shall be updated within 15 calendar days if changes in design, scheduling or maintenance activities have a significant effect on the discharge of pollutants or it is determined that discharges from the construction site are causing or contributing to water quality exceedances.

Step 8 Responsibilities	
ADOT	Contractor
Retain copies of updated SWPPP in the construction office or vehicle	Maintain an updated SWPPP

3.10 STEP 9: MAINTAIN THE BMPS

ADOT Statewide Stormwater Discharge Permit Section 5.2.4

AZCGP Part IV.I.

FCGP Part 5.

All erosion and pollution control measures and other protective measures identified in the SWPPP must be maintained in effective operational condition.

The ADOT Statewide Stormwater Discharge Permit requires a maintenance plan.

Step 9 Responsibilities	
ADOT	Contractor
Inspections and approval of BMP maintenance activities	Maintenance of all erosion and pollution control measures (BMPs)

3.11 STEP 10: EVALUATE JOB SITE TO DETERMINE FINAL STABILIZATION

ADOT Statewide Stormwater Discharge Permit Section 5.3.2, Section 12

AZCGP Part II.C.1.a.

FCGP Part 2.2.2., Appendix A, page A-5

Final Stabilization means all soil-disturbing activities have been completed; all construction materials, waste and temporary erosion and pollution control BMPs have been removed and properly disposed of and either of the two following criteria has been met:

INSTRUCTIONS FOR OBTAINING STORMWATER DISCHARGE PERMIT AUTHORIZATION FOR ADOT CONSTRUCTION PROJECTS

1. A uniform (i.e., evenly distributed, without large bare areas) perennial vegetative cover with a density equivalent to 70% of the native background vegetative cover has been established on all unpaved areas and areas not covered by permanent structures. Where perennial vegetation is not yet fully established, temporary erosion control devices are properly installed and fully operational.
2. Permanent stabilization measures (e.g., riprap, decomposed granite, gabions or geotextiles) have been employed and are fully operational.

Appendix C includes a copy of the ADOT Methodology for Determining Final Stabilization document. Check for updates at http://www.azdot.gov/Highways/Roadway_Engineering/Roadside_Development/Resources.asp.

Step 10 Responsibilities	
ADOT	Contractor
Determine final acceptance in accordance with project specifications	Request inspections to determine if final stabilization has been achieved

3.12 STEP 11: SUBMIT NOTICE OF TERMINATION (NOT)

ADOT Statewide Stormwater Discharge Permit Section 5.3.1.1, Section 5.3.2

AZCGP Part II.C.

FCGP Part 8.

The operator must submit a complete and accurate NOT to ADEQ after it has been reviewed by the Engineer and it has been determined that the project has met the submittal criteria as described in 3.11 and per the permit citations listed above. **Note: Closing a project does not mean the NOT can be filed; final stabilization criteria must be met before filing the NOT.**

Submission of the NOT form constitutes notice that the party identified on the form is terminating coverage under the AZCGP. Termination is effective at midnight on the day the NOT is received by ADEQ. ADOT does not need to file an NOT as it is covered under the ADOT Statewide Stormwater Discharge Permit.

The most efficient method for filing the NOT is to use the ADEQ Smart NOI program online at <http://az.gov/app/smarnoi/>. If the NOI was filed using the Smart NOI program, the project information on the NOI can be accessed to complete the NOT.

Alternatively, submit the NOT form by certified mail or hand delivery to:

Arizona Department of Environmental Quality
Water Permits Section - Stormwater & General Permits Unit
1110 W. Washington Street, 5415A-1
Phoenix, AZ 85007

Forms may also be faxed to 602-771-4528.

3

INSTRUCTIONS FOR OBTAINING STORMWATER DISCHARGE PERMIT AUTHORIZATION FOR ADOT CONSTRUCTION PROJECTS

The NOT form is available at the ADEQ website <http://www.azdeq.gov/environ/water/permits/download/constnot.pdf>. A copy of the NOT form is also included in Appendix C of this manual. Refer to the EPA website <http://cfpub2.epa.gov/npdes/stormwater/cgp.cfm> for FCGP NOT filing information.

Step 11 Responsibilities	
ADOT	Contractor
Approve contractor's intent to submit the NOT	Obtain approval from the ADOT Resident Engineer to file the NOT
	Submit NOT form to ADEQ and one copy to the ADOT Engineer

3.13 STEP 12: RETENTION OF RECORDS

ADOT Statewide Stormwater Discharge Permit Section 5.2.5.6, Section 11.16
AZCGP Part VII, Part VIII.I.2.
FCGP Appendix I.15

The Contractor shall retain copies of SWPPPs and all documentation required by the applicable permit, including records of all data used to complete the NOI to be covered by this permit, for at least 3 years from the date of NOT filing.

ADOT shall retain copies of SWPPPs for the permit term and copies of the *State Stormwater Management Plan* (SSWMP) and other documents for at least five years from the permit expiration date.

3.14 SPECIAL CONDITIONS, REQUIREMENTS AND EXCEPTIONS

Table 3.3 summarizes special conditions, requirements and exceptions for obtaining construction general permit authorization.

3.14.1 Permit Requirements for Indian Country

If the project is located entirely in Indian Country, FCGP permit coverage shall be obtained through the Environmental Protection Agency at <http://cfpub2.epa.gov/npdes/stormwater/cgp.cfm>.

Follow the steps listed below and described in detail at the EPA website http://cfpub2.epa.gov/ndes/stormwater/application_coverage.cfm and refer to the ADOT Stored Specification 104SWEPA to obtain coverage.

- Step 1: Read the FCGP and fact sheet.
- Step 2: Determine if project is eligible for coverage under the FCGP.
- Step 3: Develop and implement SWPPP (follow instructions in Chapter 4 of this Manual).
- Step 4: Complete and submit an NOI.

Complete and submit the NOI using the EPA's electronic stormwater permit application (eNOI) at <http://cfpub2.epa.gov/npdes/stormwater/enoi.cfm>.

INSTRUCTIONS FOR OBTAINING STORMWATER DISCHARGE PERMIT AUTHORIZATION FOR ADOT CONSTRUCTION PROJECTS

Special Conditions, Requirements and Exceptions for Obtaining Construction General Permit Authorization		
Condition, Requirement or Exception	Action	Location of forms and further information
Indian Country	Obtain FCGP through the EPA Region IX or other appropriate permitting authority	http://www.epa.gov/region09/water/npdes/index.html
Post-Construction Discharges	Post-construction discharges from industrial sites may need to be covered by a separate AZPDES permit	http://www.azdeq.gov/environ/water/permits/azpdes.html
Discharges Mixed with Non-Stormwater except as defined in Part I.C.2 of the AZCGP	Mixed discharges may need to be covered by a separate AZPDES permit	http://www.azdeq.gov/environ/water/permits/azpdes.html
Discharges Covered by Other AZPDES Permits.	Obtain appropriate permit through ADEQ	http://www.azdeq.gov/environ/water/permits/azpdes.html
Discharges to Impaired and Unique Waters	Follow instructions outlined in AZCGP; submit NOI, SWPPP and Monitoring Program 32 business days before construction activity will begin	http://az.gov/app/smartnoi/ http://www.azdeq.gov/environ/water/permits/azpdes.html
Exempt Discharges as defined In Part I.D.6 of the AZCGP	Determine if discharges meet exemption	http://www.azdeq.gov/environ/water/permits/download/2008_cgp.pdf
Permit Requirements for Batch Plants, Borrow Pits and Material Pits located outside the right-of-way	Obtain permit coverage under Multi-Sector General Permit (MSGP) for construction activities not directly related to a construction site. Monitor per ADOT Statewide SW Permit Sections 5.1.3.3, 5.1.3.4	After NOI is approved, from ADEQ via mail, fax, or electronically via the Smart NOI system http://www.azdeq.gov/environ/water/permits/msgp.html
Concrete Washout	Must comply with the Arizona Aquifer Protection Permit requirements	http://www.azdeq.gov/environ/water/permits/app.html

Table 3.3: Special Conditions, Requirements and Exceptions
for Obtaining Construction General Permit Authorization

3

INSTRUCTIONS FOR OBTAINING STORMWATER DISCHARGE PERMIT AUTHORIZATION FOR ADOT CONSTRUCTION PROJECTS

Alternatively, with prior approval from the Regional Office, submit a the paper NOI form per the 'How to File Forms' section at http://cfpub2.epa.gov/npdes/stormwater/application_coverage.cfm.

NOI form and instructions are available at:
http://www.epa.gov/npdes/pubs/cgp2008_appendixe.pdf

For project sites located on the White Mountain Apache Reservation (WMAR), the NOI shall be sent to:

Tribal Environmental Planning Office
P.O. Box 2109
Whiteriver, AZ 85941

Forms may also be faxed to WMAR at 928-338-5195.

For project sites located on the Hualapai Tribal Lands, the NOI shall be sent to:

Water Resources Program
P.O. Box 179
Peach Springs, AZ 86434

Stormwater discharge authorization must be obtained for each jurisdiction in which the project is located. For example, AZCGP and FCGP authorization must be obtained for projects located in both Indian Country and non-Indian Country in Arizona.

3.14.2 Post-Construction Discharges

The AZCGP does not authorize stormwater discharges that originate from the site after construction activities have been completed and the site, including any temporary support activity site, has achieved final stabilization and an NOT has been filed. Post-construction stormwater discharges from industrial sites may need to be covered by a separate AZPDES permit.

3.14.3 Discharges Mixed with Non-Stormwater

The AZCGP does not authorize discharges that are mixed with non-stormwater sources except as allowed in Part I.C.2.

3.14.4 Discharges Covered by Another AZPDES Permit

The AZCGP does not authorize stormwater discharges associated with construction activities that are covered under an individual permit or construction activities that are required to obtain coverage under an alternate general permit.

3.14.5 Permit Requirements for projects located within ¼ mile of Impaired or Outstanding Waters

If the project site is located within ¼ mile of outstanding (R18-11-112) or impaired (Section 303(d) of the CWA) waters, the NOI and the SWPPP must be submitted to ADEQ at least 32 business

INSTRUCTIONS FOR OBTAINING STORMWATER DISCHARGE PERMIT AUTHORIZATION FOR ADOT CONSTRUCTION PROJECTS

days before any construction activities occur at the site, per AZCGP Part II.B.1. This time frame allows ADEQ to review the SWPPP to determine whether selected BMPs are sufficiently protective of water quality.

The SWPPP must include a proposal for monitoring to determine if BMPs and controls are effective per AZCGP Part I.D.5.a.

3.14.6 Permit Requirements for Batch Plants, Borrow Pits and Material Pits

Discharges from support activities such as concrete or asphalt batch plants, equipment staging yards, material storage areas, screening and crushing plants, excavated material disposal areas and borrow areas are covered under the AZCGP if the conditions of the permit are followed per AZCGP Part I.C.1. The contractor must obtain coverage under a separate Multi-Sector General Permit (MSGP) for activities that do not fall under the allowable discharges of the AZCGP.

3.14.7 Waivers for Small Construction Activities

Both the AZCGP and FCGP specify conditions for a Rainfall Erosivity Waiver on small construction projects which disturb between one and five acres. ***THIS WAIVER IS NOT ALLOWED ON ADOT PROJECTS*** per the ADOT Statewide Stormwater Discharge Permit Part 5.1.2.

3

**INSTRUCTIONS FOR OBTAINING STORMWATER DISCHARGE PERMIT
AUTHORIZATION FOR ADOT CONSTRUCTION PROJECTS**

This page intentionally left blank