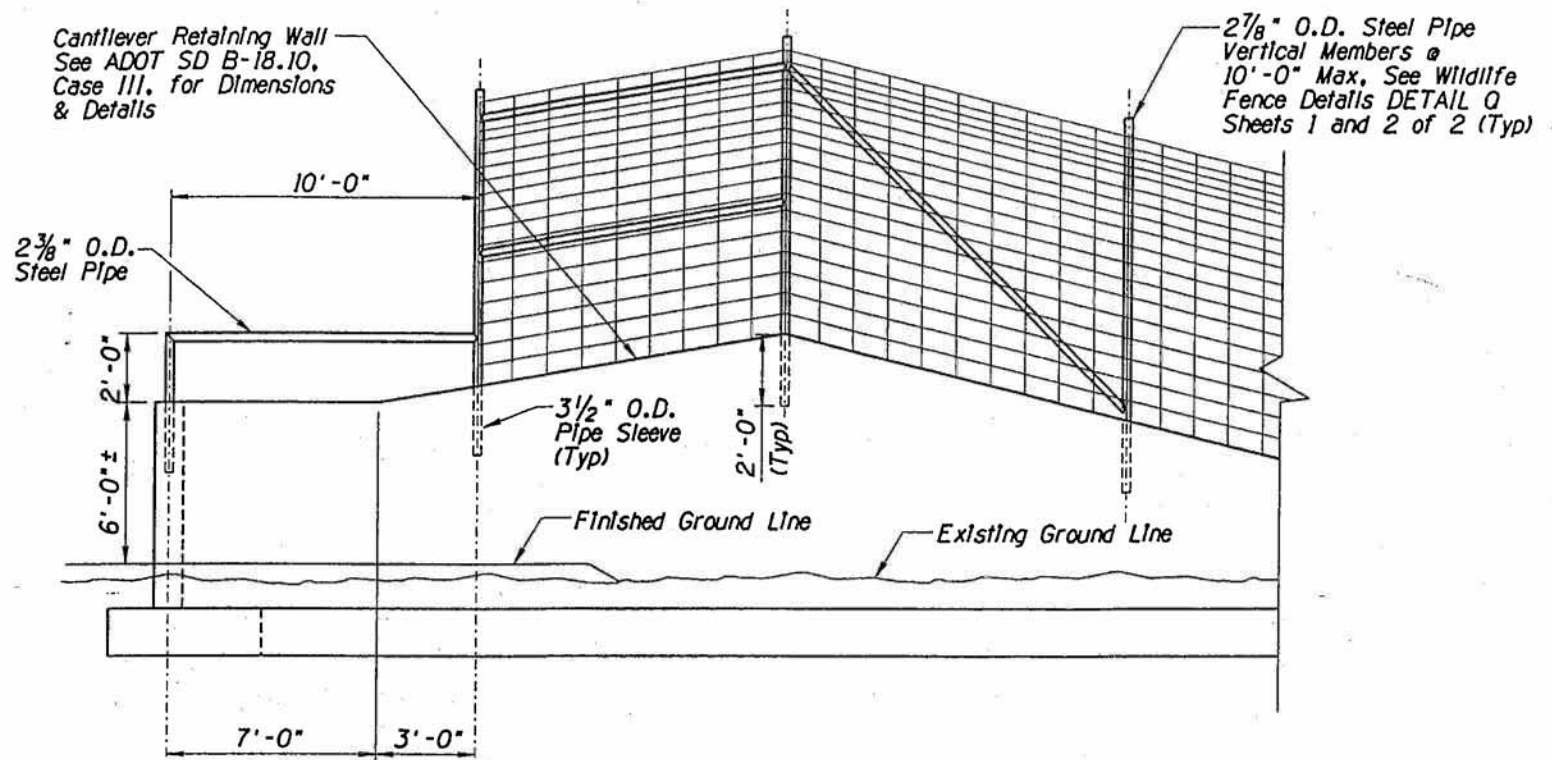
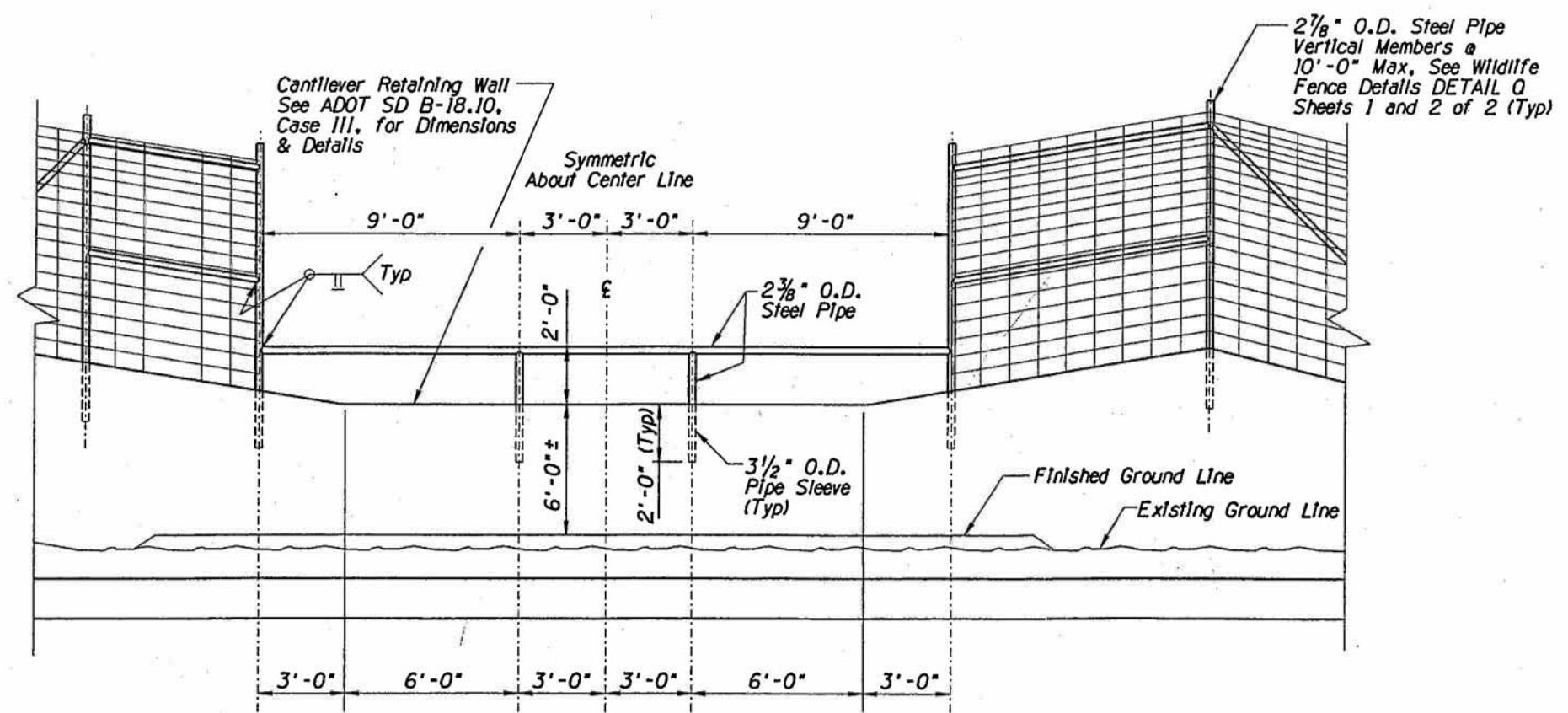


F.H.W.A. REGION	STATE	PROJECT NO.	SHEET NO.	TOTAL SHEETS	AS BUILT
9	ARIZ.	053-2(035)B	394	402	

260 GI 266



CORNER ELK JUMP ELEVATION



ELK JUMP ELEVATION

DETAIL D

Notes:

1. Steel pipe shall be standard, hot-dipped galvanized in accordance with ASSHTO M-111, & ASTM A53, grade B with $F_y=35$ ksi min. See Wildlife Fence drawings for additional information.
2. Pipe sleeves shall be full compensated in the cost per square foot of retaining wall.
3. 2 3/8" steel pipe at Elk Jump is included in the linear foot cost of the Wildlife Fence.

DESIGN	NAME	DATE	ARIZONA DEPARTMENT OF TRANSPORTATION INTERMODAL TRANSPORTATION DIVISION	PRELIMINARY
RWR		1-03		PS&E
DRAWN	KPK	1-03		Review
CHECKED	CPO	1-03		NOT FOR CONSTRUCTION OR RECORDING
Baker			WILDLIFE CROSSING RETAINING WALLS SECTIONS & DETAILS	DWG NO. S-6.7
ROUTE	LOCATION			
SR 260	KOHL'S RANCH SECTION			
TRACS NO.	H4473 01 C		053-2(035)B	OF

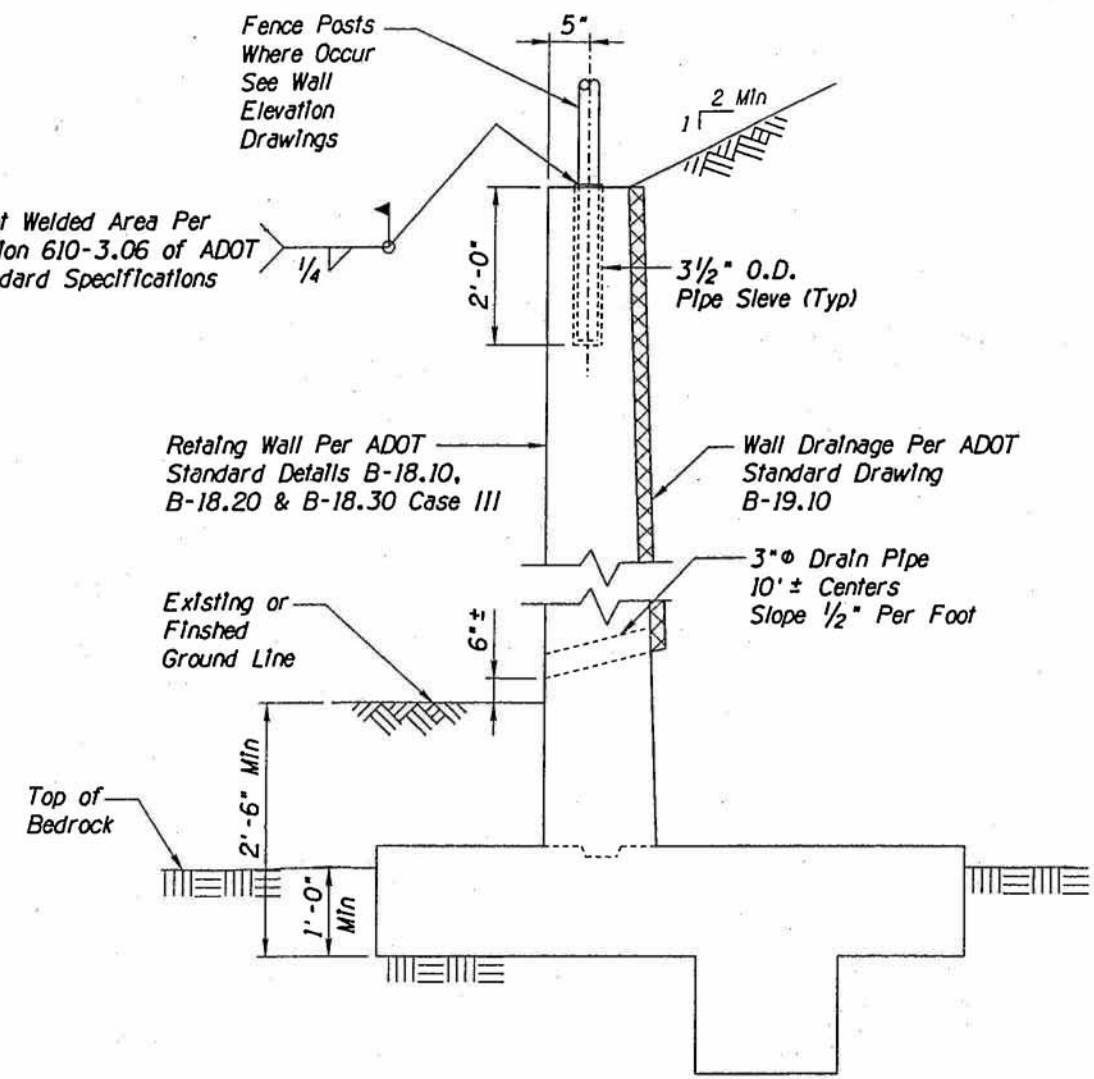
NO. 1 DESCRIPTION OF REVISION
 NO. 2 DESCRIPTION OF REVISION
 DATE
 MADE BY
 DATE
 MADE BY
 DATE
 MADE BY

F.H.W.A. REGION	STATE	PROJECT NO.	SHEET NO.	TOTAL SHEETS	AS BUILT
9	ARIZ.	053-2(035)B	395	402	

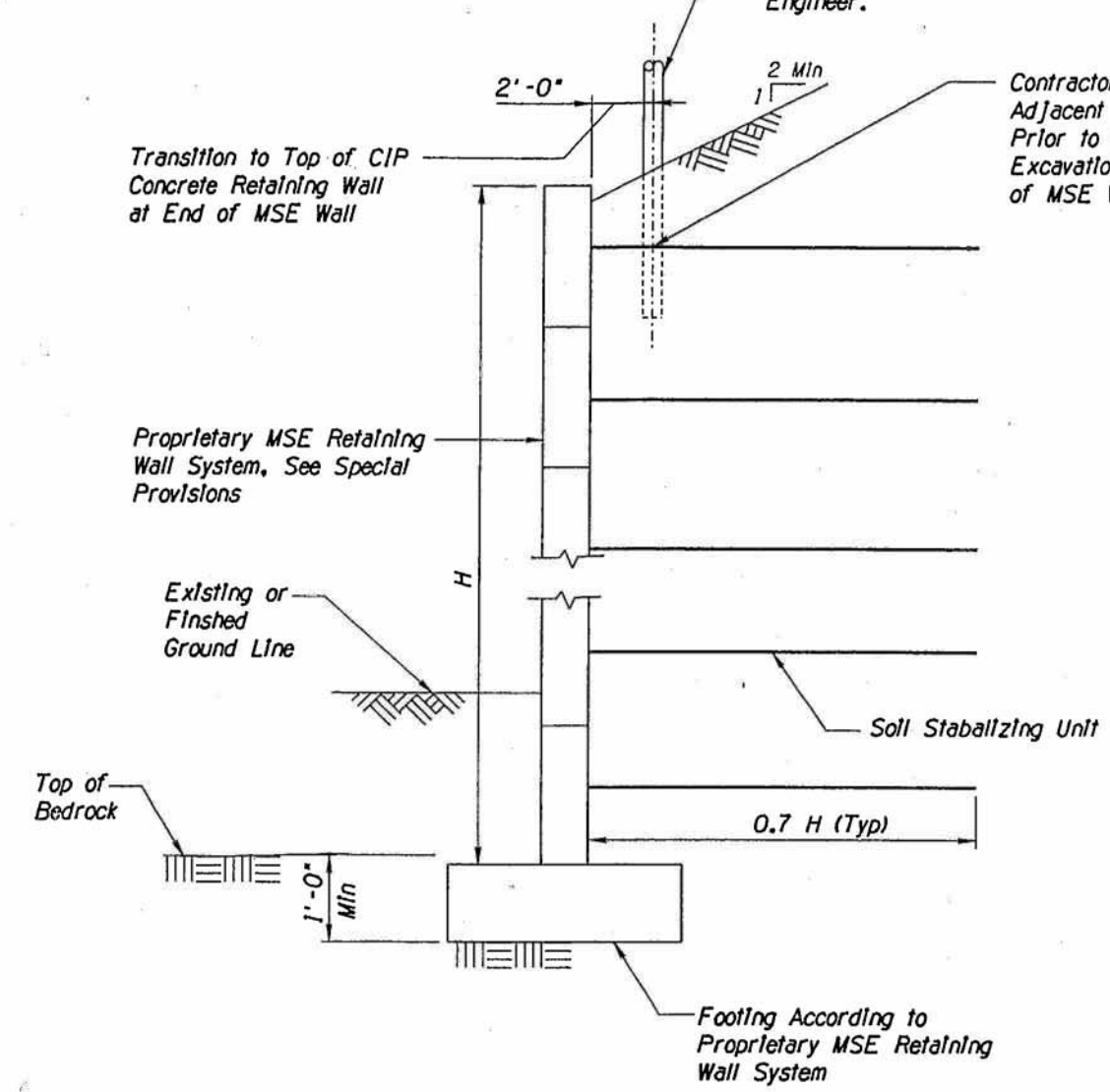
260 GI 266

See DETAIL Q for Wildlife Fence. Coordinate Post Locations With MSE Engineer.

Contractor Shall Locate Tie Backs Adjacent to Fence Foundation Prior to Fence Foundation Excavation to avoid Damage of MSE Wall Tieback



TYPICAL CIP CONCRETE WALL SECTION



TYPICAL MSE WALL SECTION

DETAIL D

NAME	DATE	ARIZONA DEPARTMENT OF TRANSPORTATION INTERMODAL TRANSPORTATION DIVISION		PRELIMINARY
DESIGN: RWR	1-03	WILDLIFE CROSSING RETAINING WALLS SECTIONS & DETAILS		PS&E Review NOT FOR CONSTRUCTION OR RECORDING
DRAWN: KPK	1-03			
CHECKED: CPO	1-03			
Baker		ROUTE: SR 260	LOCATION: KOHL'S RANCH SECTION	DWG NO. S-6.8
TRACS NO. H4473 01 C		053-2(035)B		OF

DATE: _____ MADE BY: _____ NO. 1 DESCRIPTION OF REVISION: _____ NO. 2 DESCRIPTION OF REVISION: _____ DATE: _____ MADE BY: _____