

ARIZONA

MOTOR VEHICLE CRASH FACTS

2016



2016 Motor Vehicle Crash Facts for the State of Arizona

Prepared by:
The Arizona Department of Transportation
Transportation Systems Management and Operations

Publication Date: June 21, 2017



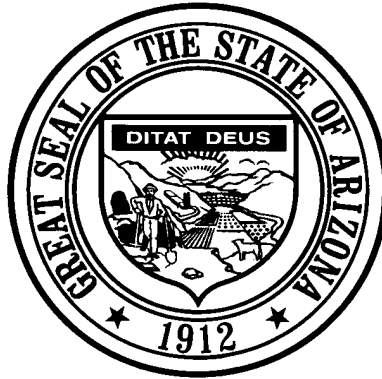
This publication is an annual statistical review of the motor vehicle crashes in the State of Arizona for the calendar year 2016. The results are compiled from Arizona Traffic Crash Reports submitted to the Arizona Department of Transportation by state, county, city, tribal, and other law enforcement agencies. Specific inquiries regarding the data in this report should be directed to:

The Arizona Department of Transportation
Transportation Systems Management and Operations
Traffic Safety Section
1615 West Jackson Street
Phoenix, AZ 85007

E-mail: azcrashfacts@azdot.gov

In order to provide the most current information, preliminary data is utilized when necessary. For this reason, previous or future reports may differ slightly and we encourage you to refer to the latest issue of Motor Vehicle Crash Facts.

This issue as well as previous issues of this publication may be viewed and downloaded from ADOT's Web Site at:
www.azdot.gov/crashfacts



Douglas A. Ducey
Governor

Arizona Department of Transportation

John S. Halikowski
Director

State Transportation Board

Deanna L. Beaver – District 6
Chairwoman

William F. Cuthbertson – District 3
Vice Chairman

Members

Joseph E. La Rue – District 1

Jack Sellers – District 1

Michael S. Hammond – District 2

Steve Stratton – District 4

Arlando S. Teller – District 5

OVERVIEW

Section 1: – Highlights and Historical Trends..... 1

Section 2: – Geographic Location 9

Section 3: – Crash Descriptions..... 17

Section 4: – Safety Devices 23

Section 5: – Motor Vehicle and Driver Descriptions..... 26

Section 6: – Alcohol Related Crashes..... 33

Section 7: – Pedestrian and Pedalcyclist Crashes..... 42

Section 8: – Motorcycle (MC) Crashes 48

Acknowledgements 58

2016 Arizona Crash Facts Summary

Table of Contents

Section 1: Highlights and Historical Trends	1
Arizona Crash Facts Summary and Comparison.....	2
Arizona at a Glance – 2016.....	2
Licensed Drivers, Motor Vehicle Registration and Crash History in Arizona.....	3
Historical Trends – VMT and Rates.....	3
Statewide Economic Loss Due to Motor Vehicle Crashes.....	4
Average Economic Cost per Incident.....	4
Traffic Crashes in Arizona by Year.....	5
Victims of Motor Vehicle Crashes.....	6
Fatalities by Person Type 2012-2016.....	6
Young Drivers (age 15-24) killed in crashes 2012-2016	6
Vehicle Miles Traveled.....	7
Arizona Fatality Rate vs. Injury Rate.....	7
Traffic Fatalities by Geographic Region.....	7
Traffic Injuries by Geographic Region.....	7
Holiday Crash Statistics.....	8
Section 2: Geographic Location	9
Crash Severity by First Harmful Event Statewide.....	10
Crashes by County.....	10
Crash Severity by First Harmful Event in Urban Areas.....	11
Crash Severity by First Harmful Event in Rural Areas.....	11
Analysis by Jurisdiction.....	12
Total Fatalities by County for 2015 and 2016.....	15
Urban and Rural Crashes by Day of Week.....	16
Urban and Rural Fatal Crashes by Day of Week.....	16
All Urban and Rural Crashes vs. Urban and Rural Fatal Crashes by Month.....	16
Section 3: Crash Descriptions	17
Manner of Collision in Multi-Vehicle Crashes.....	18
Lighting Conditions.....	18
Weather Conditions.....	18
Road Surface Conditions.....	19
Roadway Grade.....	19
Roadway Alignment.....	19
All Crashes vs. Fatal Crashes by Time of Day - Weekdays.....	20
All Crashes vs. Fatal Crashes by Time of Day - Weekends.....	20
Crashes by Day of Week.....	21
Fatal Crashes by Day of Week.....	21
All Crashes vs. Fatal Crashes by Month.....	21
Crashes by Hour and Day of Week.....	22
Section 4: Safety Devices	23
Child Safety Device Usage (less than five years old).....	24
Driver Safety Device Usage.....	24
Passenger Safety Device Usage.....	24
Driver Safety Device Usage by Gender.....	25
Driver Safety Device Usage by Age.....	25
Section 5: Motor Vehicle and Driver Descriptions	26
Arizona Motor Vehicle Registrations.....	27
Motor Vehicle Crash Involvement by Vehicle Type.....	27

2016 Arizona Crash Facts Summary

Hit and Run Drivers Involved in Crashes.....	28
Gender of Drivers Involved in Crashes.....	28
License Status of Drivers Involved in Crashes.....	28
Passengers Killed and Injured by Age and Gender.....	28
Drivers and Passengers Killed and Injured by Vehicle Type.....	29
Drivers Killed and Injured by Age and Gender.....	29
Licensed Drivers in Arizona by Age.....	30
Driver Involvement by Age.....	30
Driver Violations.....	31
Driver Physical Condition.....	31
Distracted Driving Behavior.....	32
Secondary Crashes.....	32
Section 6: Alcohol Related Crashes.....	33
Economic Loss Due to Alcohol Related Crashes in Arizona for 2016.....	34
Alcohol Related Crash History.....	34
Manner of Collision in Alcohol Related Crashes.....	34
Alcohol Related Crashes by First Harmful Event.....	35
Alcohol Related Crashes by Vehicle Type.....	35
Lighting Conditions in Alcohol Related Crashes.....	36
Road Surface Conditions in Alcohol Related Crashes.....	36
Gender of Drivers Involved in Alcohol Related Crashes.....	36
Driver Involvement by Age in Alcohol Related Crashes.....	37
When Alcohol Related Crashes Occurred in 2016.....	37
Safety Device Usage for Drinking Drivers.....	37
Persons Killed and Injured in Alcohol Related Crashes.....	38
Alcohol Related Crashes by County.....	38
All Alcohol Related Crashes vs. Fatal Alcohol Related Crashes by Day of Week.....	39
All Alcohol Related Crashes vs. Fatal Alcohol Related Crashes by Month.....	39
All Alcohol Related Crashes vs. Fatal Alcohol Related Crashes - Weekdays.....	40
All Alcohol Related Crashes vs. Fatal Alcohol Related Crashes - Weekends.....	40
Alcohol Related Crashes by Hour and Day of Week.....	41
Section 7: Pedestrian and Pedalcyclist Crashes.....	42
Pedestrians Killed and Injured By Age and Gender.....	43
Pedestrian Crashes by Geographic Location.....	43
Pedestrian Crash History.....	43
Pedestrians Killed by Age and Action.....	44
Pedestrians Injured by Age and Action.....	44
Pedestrian Physical Condition in Motor Vehicle Crashes.....	44
Lighting Conditions in Pedestrian Crashes.....	45
Weather Conditions in Pedestrian Crashes.....	45
Pedalcyclists Killed and Injured by Age and Gender.....	45
Pedalcycle Crashes by Geographic Location.....	46
Pedalcycle Crash History.....	46
Lighting Conditions in Pedalcyclist Crashes.....	46
Weather Conditions in Pedalcyclist Crashes.....	46
Pedestrian Crashes by County.....	47
Pedalcyclist Crashes by County.....	47
Section 8: Motorcycle (MC) Crashes.....	48
MC Fatalities by Year.....	49
MC Registrations in Arizona.....	49
Fatality Rate per Registered MC.....	49
Percent of MC Crashes to All Crashes.....	49
MC Crashes by First Harmful Event.....	50
Lighting Conditions in MC Crashes.....	50
Road Surface Conditions in MC Crashes.....	50

2016 Arizona Crash Facts Summary

MC Crashes by Geographic Location.....	51
Operator Involvement by Age in MC Crashes.....	51
MC Operator Physical Condition.....	51
Helmet Use by Gender.....	52
MC Operator’s Helmet Use.....	52
MC Passenger’s Helmet Use.....	52
MC Operators and Passengers Killed and Injured.....	53
MC Operator Violations.....	53
All MC Crashes vs. Fatal MC Crashes by Time of Day - Weekdays.....	54
All MC Crashes vs. Fatal MC Crashes by Time of Day - Weekends.....	54
All MC Crashes vs. Fatal MC Crashes by Day of Week.....	55
Alcohol Related MC Crashes vs. Fatal Alcohol Related MC Crashes by Day of Week.....	55
MC Crashes by Hour and Day of Week.....	56
MC Crashes by County.....	57
Manner of Collision in MC Crashes.....	57
Acknowledgements.....	58

2016 Arizona Crash Facts Summary

BREAKDOWN OF ALL CRASHES IN ARIZONA

TOTAL	126,845
FATAL	865
INJURY	38,544
PROPERTY DAMAGE ONLY	87,436
URBAN	103,237
RURAL	23,608
ALCOHOL RELATED	4,923
PEDESTRIAN	1,637
PEDALCYCLE	1,476
MOTORCYCLE	3,104
SINGLE VEHICLE	20,036
MULTI-VEHICLE	106,809

BREAKDOWN OF FATAL CRASHES IN ARIZONA

TOTAL	865
ALCOHOL RELATED	270
URBAN	496
RURAL	369
SINGLE VEHICLE	302
MULTI-VEHICLE	563
ALCOHOL RELATED SINGLE VEHICLE	100
ALCOHOL RELATED MULTI-VEHICLE	170

BREAKDOWN OF PERSONS KILLED AND INJURED

TYPE	KILLED	INJURED
IN ALL CRASHES	962	56,636
IN ALCOHOL RELATED CRASHES	307	3,297
IN URBAN CRASHES	525	46,106
IN RURAL CRASHES	437	10,530
SPEED RELATED*	295	23,065
USING SAFETY DEVICE	263	46,224
NOT USING SAFETY DEVICE	329	3,302
DRIVERS AGE 24 OR YOUNGER	100	8,870
DRINKING DRIVERS AGE 24 OR YOUNGER	31	363

BREAKDOWN OF CRASHES BY TIME

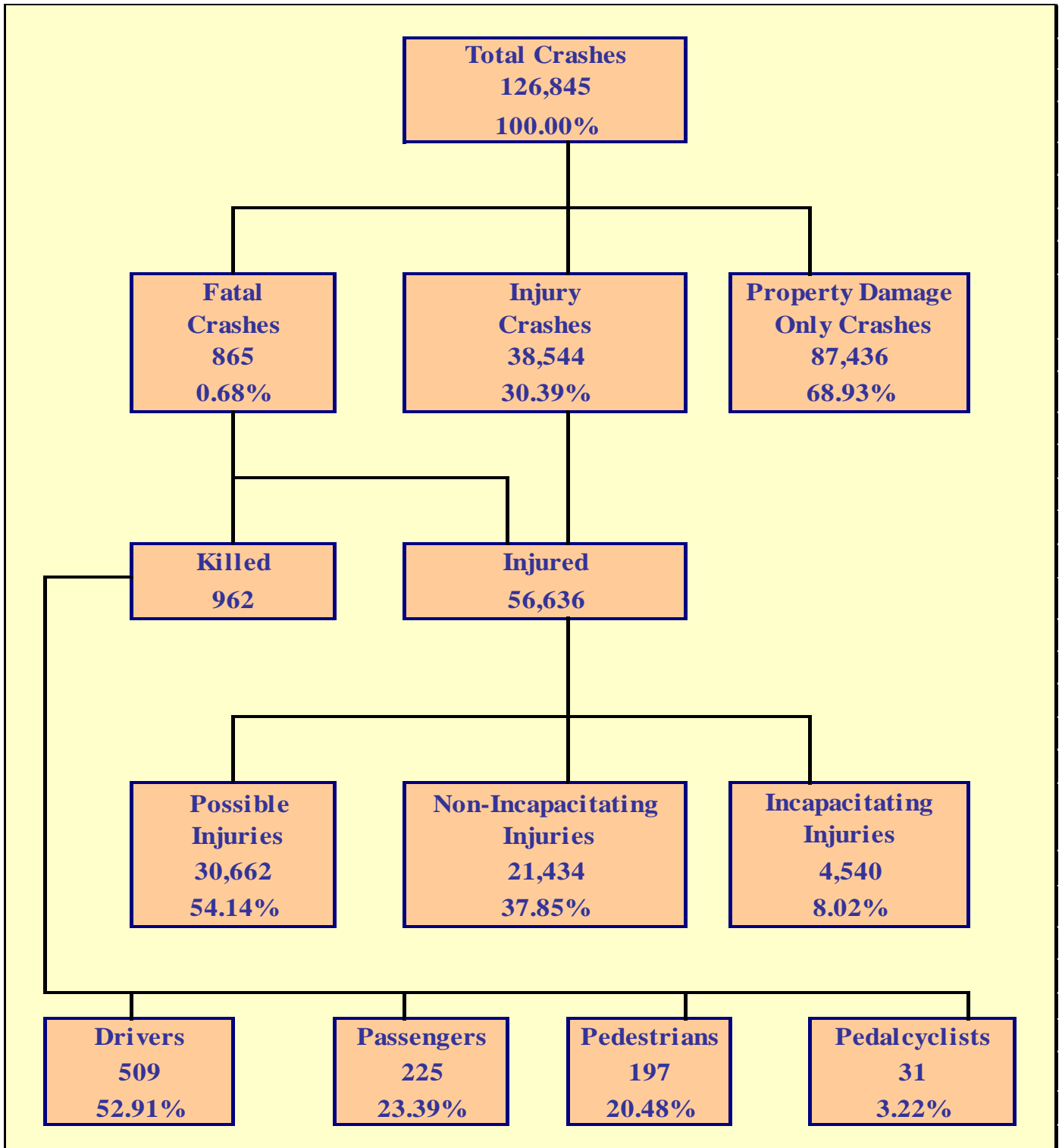
PEAK MONTH FOR ALL CRASHES	MARCH
PEAK DAY FOR ALL CRASHES	FRIDAY
PEAK HOUR FOR ALL CRASHES	4 PM - 5 PM
PEAK HOUR FOR FATAL CRASHES	7 PM - 8 PM
PEAK DAY FOR FATAL CRASHES	SATURDAY
PEAK DATE FOR ALL CRASHES IN 2016	JANUARY 7TH (576 CRASHES)
PEAK DATE FOR FATAL CRASHES IN 2016	NOVEMBER 8TH (8 CRASHES)
PEAK HOUR FOR ALCOHOL RELATED CRASHES	2 AM - 3 AM
PEAK DAY FOR MOTORCYCLE CRASHES	SATURDAY
PEAK HOUR FOR ALL MOTORCYCLE CRASHES	4 PM - 5 PM

OTHER FACTS

MOST COMMON MANNER OF COLLISION	REAR END
MOST COMMON DRIVER VIOLATION	SPEED TOO FAST FOR CONDITIONS

*Note: These numbers represent the total number of fatalities and injuries in crashes where the violation "speed too fast for conditions" or "exceeded lawful speed" was marked on the crash form

THIS PAGE LEFT BLANK FOR PRINTING PURPOSES



Section 1: – Highlights and Historical Trends

Table 1 – 1

Arizona Crash Facts Summary and Comparison

Category	2015	2016	Percent Change
Total Crashes	116,774	126,845	8.62%
Total Fatalities	897	962	7.25%
Total Injuries	53,677	56,636	5.51%
Alcohol Related Fatalities	329	307	-6.69%
Alcohol Related Injuries	3,240	3,297	1.76%
Urban Fatalities	468	525	12.18%
Urban Injuries	43,495	46,106	6.00%
Rural Fatalities	429	437	1.86%
Rural Injuries	10,182	10,530	3.42%
MC Operator and Passenger Fatalities	134	144	7.46%
MC Operator and Passenger Injuries	2,518	2,593	2.98%
Pedestrians Fatalities	163	197	20.86%
Pedestrians Injuries	1,243	1,448	16.49%
Pedalcyclist Fatalities	28	31	10.71%
Pedalcyclist Injuries	1,277	1,350	5.72%
Millions of vehicle miles traveled (VMT)	65,045	65,606	0.86%
Fatalities per 100 million VMT	1.38	1.47	6.33%
Injuries per 100 million VMT	82.52	86.33	4.61%

Arizona at a Glance – 2016

- Approximately **2.63** persons were killed each day.
- One person was killed every **9.11** hours.
- There were **155.06** persons injured every day.
- One person was injured every **9.29** minutes.
- Alcohol Related crashes accounted for **3.88%** of all crashes and **31.21%** of all fatal crashes.
- Of all alcohol related crashes, **78.81%** occurred in Urban areas and **21.19%** occurred in Rural areas, while **67.04%** of all alcohol related fatal crashes occurred in Urban areas and **32.96%** occurred in Rural areas.
- Single vehicle crashes accounted for **15.80%** of all crashes and **34.91%** of all fatal crashes.
- Of all Pedestrian crashes, **11.97%** were fatal while **2.10%** of Pedalcycle crashes were fatal.
- Crashes which occurred during daylight hours (6:00 a.m. to 6:00 p.m.) accounted for **72.4%** of all crashes.
- Motor vehicle crashes resulted in **\$10.748** billion in economic losses to Arizona.
- Children age 14 and younger accounted for **36** fatalities and **3,588** injuries in motor vehicle crashes.

Section 1: – Highlights and Historical Trends

Table 1 – 2
Licensed Drivers, Motor Vehicle Registration
and Crash History in Arizona

Calendar Year	Total Crashes	Fatal Crashes	Injury Crashes	Property Damage Only Crashes	Total Persons Killed	Total Persons Injured	Total Licensed Drivers	Total Registered Vehicles
2002	134,893	984	46,394	87,515	1,132	74,548	3,668,704	4,089,662
2003	131,207	978	45,293	84,936	1,125	72,113	3,819,823	4,193,262
2004	138,898	998	46,788	91,112	1,159	73,686	3,784,365	4,364,857
2005	140,574	1,049	45,826	93,699	1,193	71,083	3,963,005	4,556,448
2006	143,504	1,126	45,395	96,983	1,301	70,013	4,091,789	4,748,957
2007	141,193	952	43,560	96,681	1,071	66,062	4,212,393	4,848,162
2008	120,557	843	37,515	82,199	938	56,539	4,360,711	4,842,188
2009	107,149	709	33,506	72,934	806	50,809	4,434,719	4,787,350
2010	106,900	695	33,419	72,786	759	50,463	4,537,653	4,805,904
2011	103,958	756	33,222	69,980	827	49,856	4,634,405	4,855,014
2012	103,939	738	33,593	69,608	821	50,085	4,736,517	4,969,620
2013	107,575	782	34,136	72,657	849	50,439	4,826,903	5,130,780
2014	109,681	709	34,521	74,451	774	51,016	4,922,676	5,300,980
2015	116,774	811	36,206	79,757	897	53,677	5,025,811	5,487,058
2016	126,845	865	38,544	87,436	962	56,636	5,135,262	5,677,208

Table 1 – 3
Historical Trends – VMT and Rates

Calendar Year	Arizona Fatality Rate	Arizona Injury Rate	Arizona Traffic Fatalities	Estimated Motor Vehicle Miles Traveled	Arizona Fatal Crash Rate
2012	1.37	83.30	821	60,129	1.23
2013	1.40	83.25	849	60,586	1.29
2014	1.24	81.45	774	62,631	1.13
2015	1.38	82.52	897	65,045	1.25
2016	1.47	86.33	962	65,606	1.32

Vehicle miles traveled are shown in million miles and rates per 100 million miles

Section 1: – Highlights and Historical Trends

Statewide Economic Loss Due to Motor Vehicle Crashes

Fatalities	\$5,579,600,000
Incapacitating Injuries	\$1,816,000,000
Non-Incapacitating Injuries	\$1,714,720,000
Possible Injuries	\$1,287,804,000
Property Damage Only	\$349,744,000
TOTAL	\$10,747,868,000

Table 1 – 4

Estimated Economic Loss by County

County	Cost of Traffic Crashes			
	Fatalities	Injuries	PDO	Total
Apache	\$ 208,800,000	\$ 26,056,000	\$ 1,044,000	\$ 235,900,000
Cochise	\$ 150,800,000	\$ 58,156,000	\$ 3,876,000	\$ 212,832,000
Coconino	\$ 301,600,000	\$ 120,638,000	\$ 12,340,000	\$ 434,578,000
Gila	\$ 121,800,000	\$ 40,880,000	\$ 2,112,000	\$ 164,792,000
Graham	\$ 29,000,000	\$ 13,084,000	\$ 644,000	\$ 42,728,000
Greenlee	\$ 5,800,000	\$ 4,268,000	\$ 256,000	\$ 10,324,000
La Paz	\$ 104,400,000	\$ 30,816,000	\$ 1,176,000	\$ 136,392,000
Maricopa	\$ 2,807,200,000	\$ 3,288,946,000	\$ 259,148,000	\$ 6,355,294,000
Mohave	\$ 313,200,000	\$ 151,344,000	\$ 8,584,000	\$ 473,128,000
Navajo	\$ 168,200,000	\$ 50,352,000	\$ 2,984,000	\$ 221,536,000
Pima	\$ 655,400,000	\$ 568,978,000	\$ 27,812,000	\$ 1,252,190,000
Pinal	\$ 359,600,000	\$ 182,038,000	\$ 11,476,000	\$ 553,114,000
Santa Cruz	\$ 17,400,000	\$ 19,046,000	\$ 1,640,000	\$ 38,086,000
Yavapai	\$ 232,000,000	\$ 166,916,000	\$ 9,888,000	\$ 408,804,000
Yuma	\$ 104,400,000	\$ 97,006,000	\$ 6,764,000	\$ 208,170,000
TOTALS	\$ 5,579,600,000	\$ 4,818,524,000	\$ 349,744,000	\$ 10,747,868,000

Table 1 – 5

Average Economic Cost per Incident

1.	Fatality	\$5,800,000
2.	Incapacitating Injury	\$400,000
3.	Non-Incapacitating Injury	\$80,000
4.	Possible Injury	\$42,000
5.	Property Damage Only	\$4,000

Source: www.cmfclearinghouse.org/resources_servlifecrashcostguide.cfm

Section 1: – Highlights and Historical Trends

Traffic Crashes in Arizona by Year

Chart 1 – 1
Total Crashes

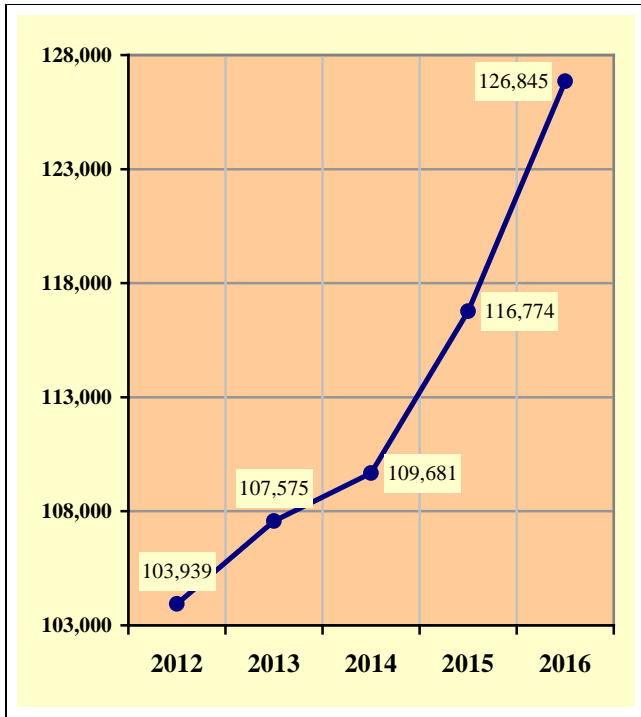


Chart 1 – 2
Fatal Crashes

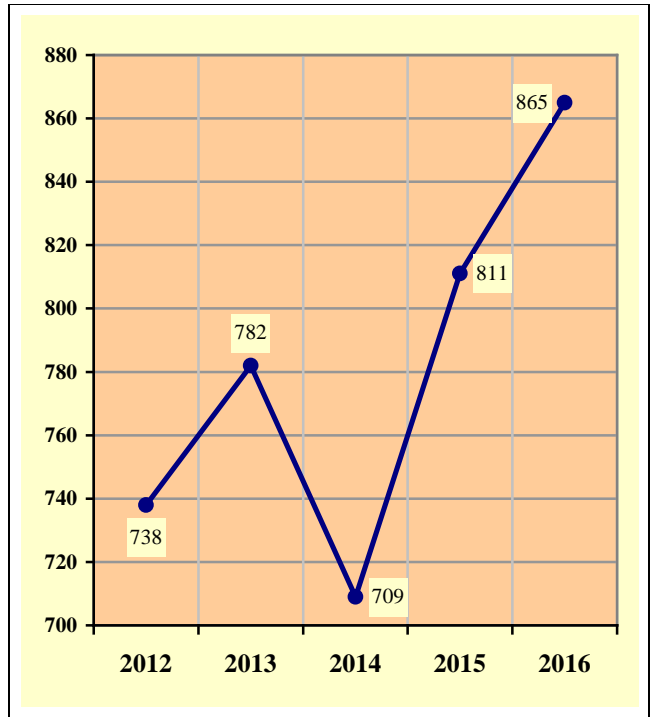


Chart 1 – 3
Injury Crashes

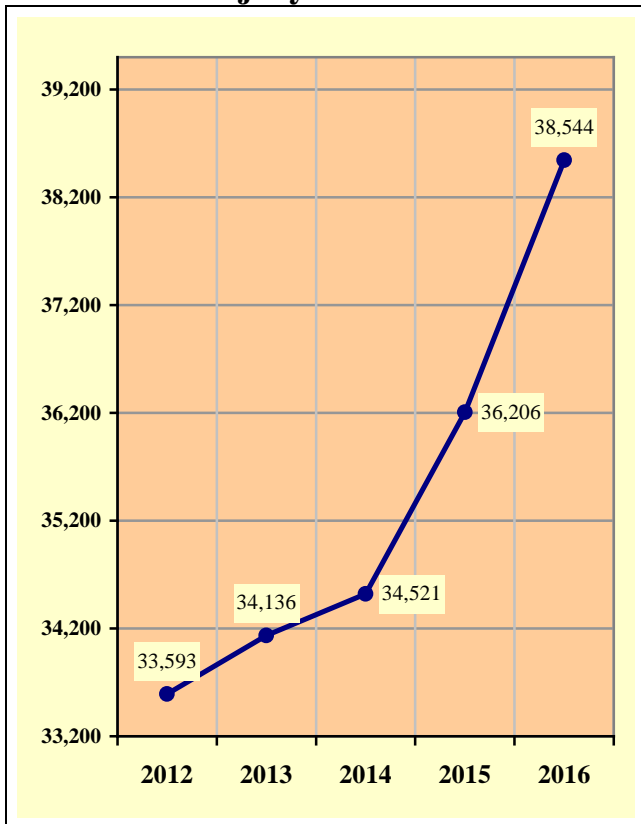
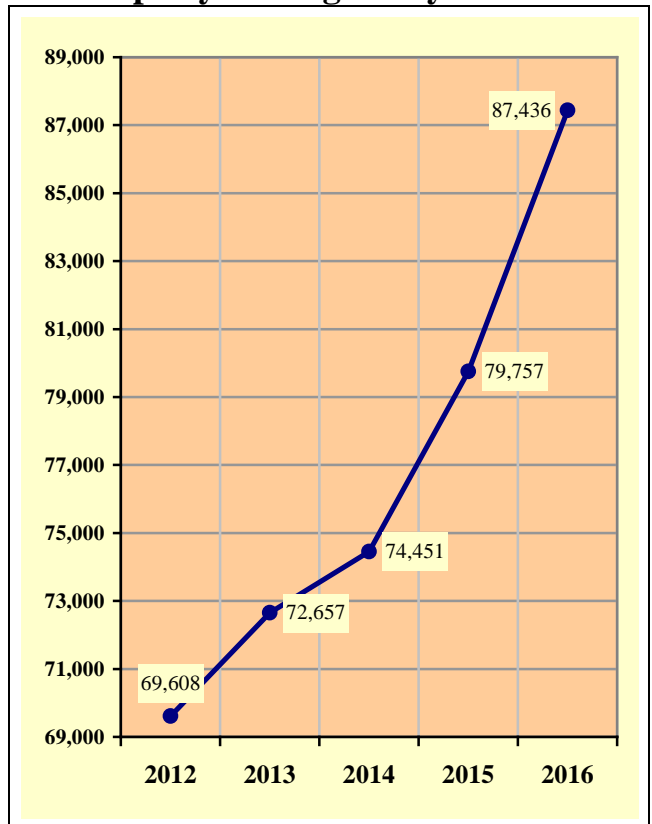


Chart 1 – 4
Property Damage Only Crashes



Section 1: – Highlights and Historical Trends

**Table 1 – 6
Victims of Motor Vehicle Crashes**

Age of Victim	Persons Killed				Persons Injured			
	Total	Male	Female	Gender Unknown	Total	Male	Female	Gender Unknown
0-4	14	9	5	0	904	467	437	0
5-9	7	5	2	0	1,229	609	620	0
10-14	15	8	7	0	1,455	659	796	0
15-19	60	33	27	0	5,670	2,695	2,975	0
20-24	113	82	31	0	7,588	3,695	3,893	0
25-34	143	101	42	0	11,134	5,365	5,769	0
35-44	129	95	34	0	8,195	3,847	4,348	0
45-54	162	129	33	0	7,697	3,742	3,955	0
55-64	139	105	34	0	6,211	2,995	3,216	0
65-74	87	57	30	0	3,725	1,725	2,000	0
75 & Older	90	57	33	0	2,138	971	1,167	0
Unknown	3	0	0	3	690	290	296	104
TOTAL	962	681	278	3	56,636	27,060	29,472	104

**Table 1 – 7
Fatalities by Person Type 2012-2016**

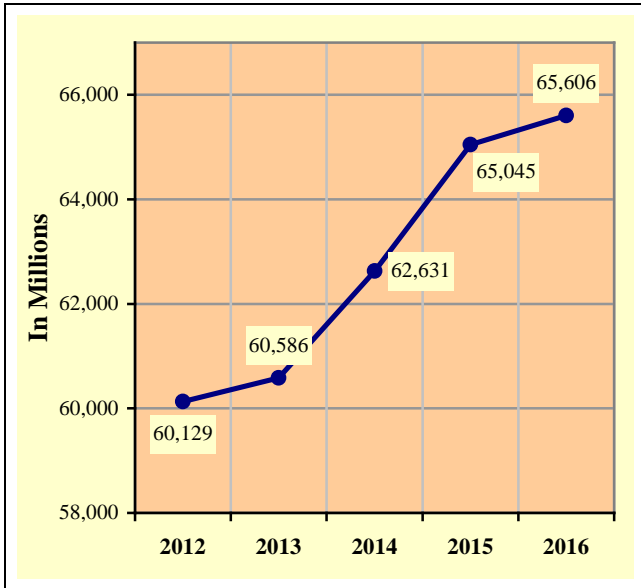
Year	Drivers	Passengers	Pedestrians	Pedalcyclists	Total
2012	475	197	131	18	821
2013	474	186	160	29	849
2014	426	164	155	29	774
2015	511	195	163	28	897
2016	509	225	197	31	962
TOTAL	2,395	967	806	135	4,303

**Table 1 – 8
Young drivers (age 15-24) killed in crashes 2012-2016**

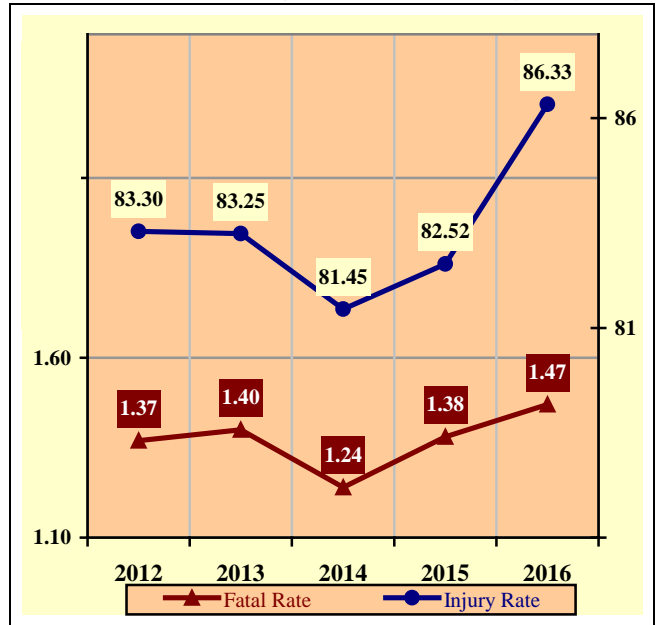
Year	Age of Driver										Total
	15	16	17	18	19	20	21	22	23	24	
2012	0	5	9	11	7	9	17	18	14	10	100
2013	2	2	7	7	12	12	17	9	13	9	90
2014	0	0	1	14	8	5	9	10	13	10	70
2015	1	2	4	7	7	13	15	15	10	10	84
2016	2	2	1	12	12	11	9	19	15	14	97
TOTAL	5	11	22	51	46	50	67	71	65	53	441

Section 1: – Highlights and Historical Trends

**Chart 1 – 5
Vehicle Miles Traveled**

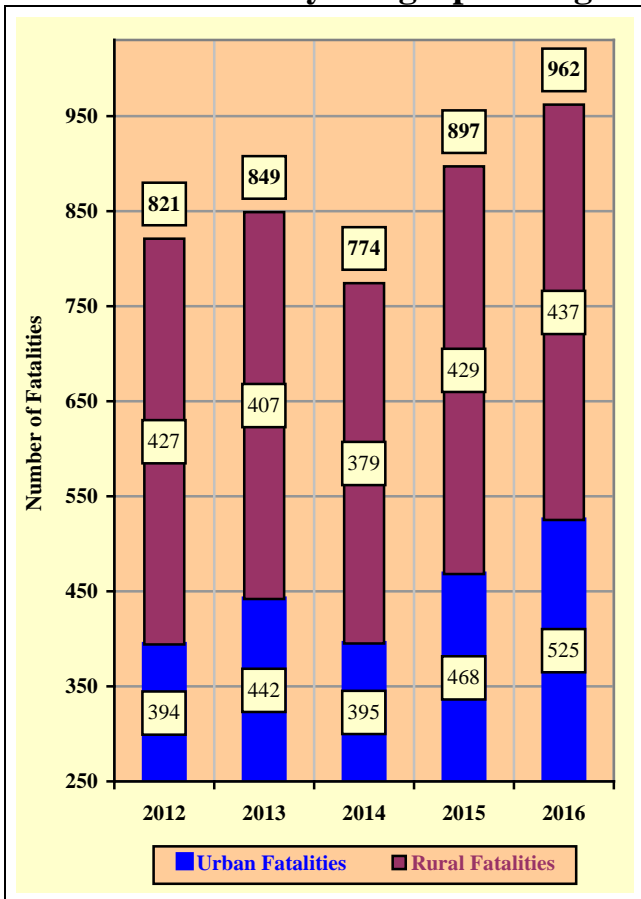


**Chart 1 – 6
Arizona Fatality Rate vs. Injury Rate**

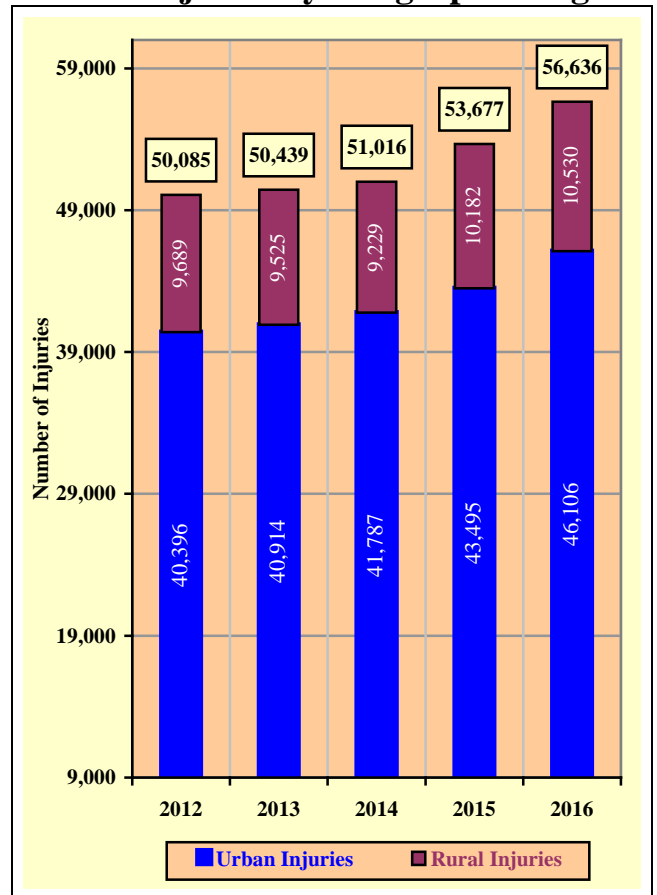


Source: ADOT – Multimodal Planning Division

**Chart 1 – 7
Traffic Fatalities by Geographic Region**



**Chart 1 – 8
Traffic Injuries by Geographic Region**



Section 1: – Highlights and Historical Trends

Table 1 – 9

Holiday Crash Statistics

Holidays such as Memorial Day, Labor Day, and Thanksgiving are regarded as three or four day weekend holidays for statistical purposes. Holidays such as Christmas, New Year’s Day, and the Fourth of July are celebrated on specific dates; which make the holiday period range from two to five days in length.

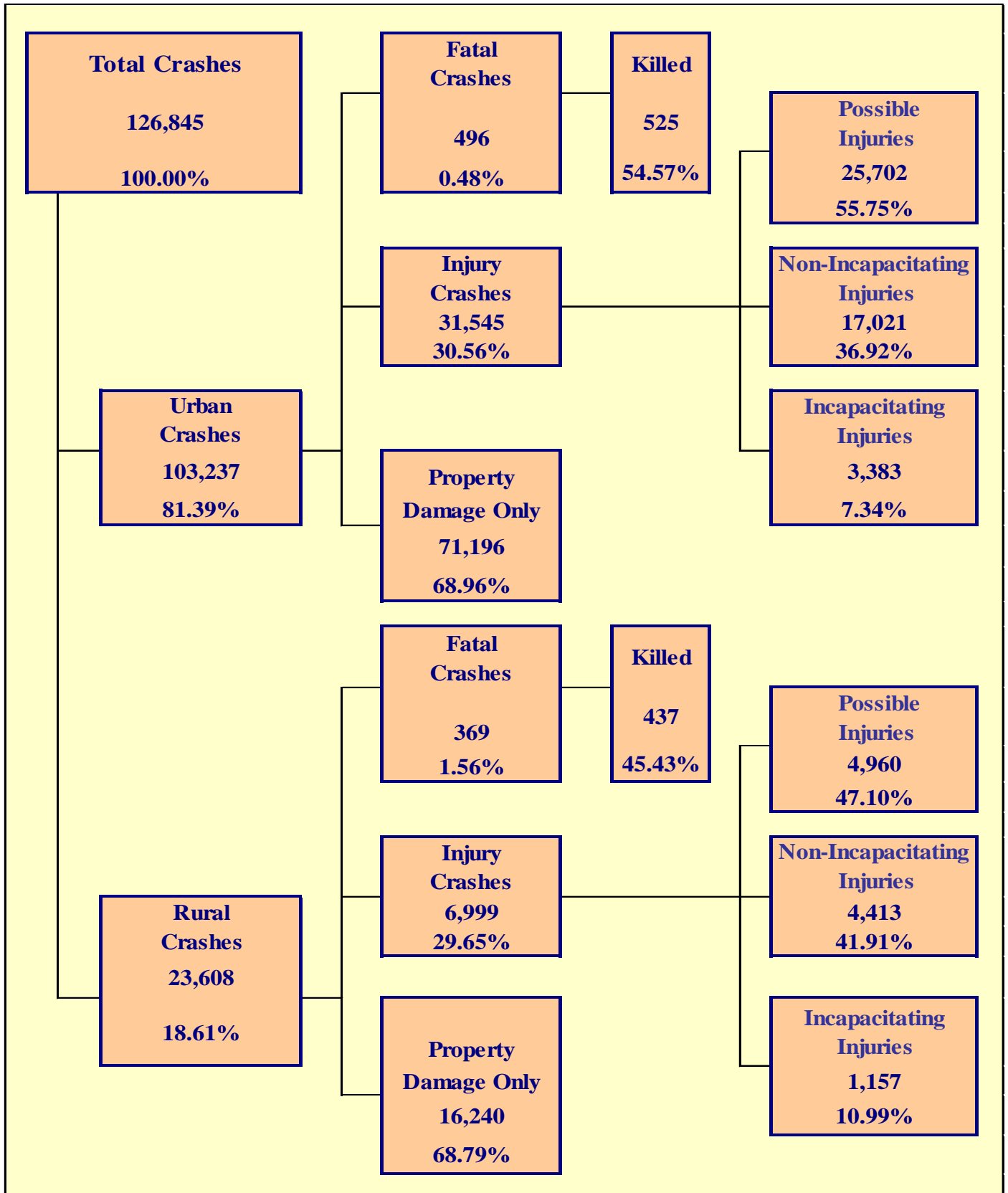
Holiday fatality statistics are based on fatal crashes occurring from 6:00 p.m. on the last working day prior to the holiday through 5:59 a.m. the day following the holiday period. Example: Thanksgiving fatalities are counted from Wednesday evening at 6:00 p.m. through 5:59 a.m. of the following Monday.

2016 Holidays	Beginning at 6:00 p.m.	Ending at 5:59 a.m.	Number of Days	Fatal Crashes	Persons Killed	Alcohol Related Fatal Crashes	Alcohol Related Fatalities
New Year’s Day	Thursday	Monday	4	6	6	3	3
	12/31/2015	1/4/2016					
Memorial Day	Friday	Tuesday	4	7	7	2	2
	5/27/2016	5/31/2016					
July 4th	Friday	Tuesday	4	14	16	8	9
	7/1/2016	7/5/2016					
Labor Day	Friday	Tuesday	4	7	8	3	4
	9/2/2016	9/6/2016					
Thanksgiving Day	Wednesday	Monday	5	10	10	5	5
	11/23/2016	11/28/2016					
Christmas Day	Friday	Tuesday	4	4	6	0	0
	12/23/2016	12/27/2016					

Fatal Crashes by Year	New Year’s Day	Memorial Day	July 4th	Labor Day	Thanksgiving	Christmas Day	Total
2012	14	7	5	15	11	4	56
2013	3	9	15	8	11	1	47
2014	3	7	7	4	14	7	42
2015	7	10	11	10	10	4	52
2016	6	7	14	7	10	4	48

Persons Killed	New Year’s Day	Memorial Day	July 4th	Labor Day	Thanksgiving	Christmas Day	Total
2012	14	8	6	18	11	4	61
2013	4	10	16	8	14	1	53
2014	3	8	9	6	18	8	52
2015	7	11	11	10	16	6	61
2016	6	7	16	8	10	6	53

Number of Days	New Year’s Day	Memorial Day	July 4th	Labor Day	Thanksgiving	Christmas Day	Total
2012	4	4	2	4	5	5	24
2013	5	4	5	4	5	2	25
2014	2	4	4	4	5	5	24
2015	5	4	4	4	5	4	26
2016	4	4	4	4	5	4	25



Section 2: – Geographic Location

Fatal Crashes in Arizona (865) accounted for 0.68% of all crashes, Injury Crashes (38,544) accounted for 30.39%, and Property Damage Only (PDO) Crashes (87,436) accounted for 68.93%.

**Table 2 – 1
Crash Severity by First Harmful Event Statewide**

First Harmful Event Type	Number of Crashes				Number of Persons	
	Total	Fatal	Injury	PDO	Killed	Injured
Collision with Motor Vehicle in Transport	93,172	312	27,573	65,287	368	42,729
Overturning	2,861	132	1,792	937	150	2,506
Collision with Pedestrian	1,424	189	1,198	37	189	1,291
Collision with Pedalcyclist	1,377	29	1,248	100	30	1,285
Collision with Animal	2,145	1	186	1,958	1	233
Collision with Fixed Object	13,028	160	3,813	9,055	180	4,713
Collision with Non-fixed Object*	5,237	13	524	4,700	13	622
Vehicle Fire or Explosion	337	1	6	330	1	8
Other Non-collision**	600	9	101	490	9	109
Unknown	6,664	19	2,103	4,542	21	3,140
TOTAL	126,845	865	38,544	87,436	962	56,636
*Includes Collision with Parked Vehicles, Trains, Railway Vehicles, and Work Zone Equipment						
**Includes Vehicle Immersion, Jackknife, and Cargo Loss or Shift						

**Table 2 – 2
Crashes by County**

County	Number of Crashes				Number of Persons	
	Total	Fatal	Injury	PDO	Killed	Injured
Apache	424	29	134	261	36	226
Cochise	1,373	23	381	969	26	568
Coconino	3,986	46	855	3,085	52	1,283
Gila	796	16	252	528	21	375
Graham	256	4	91	161	5	121
Greenlee	89	1	24	64	1	32
La Paz	459	15	150	294	18	243
Maricopa	92,726	458	27,481	64,787	484	40,261
Mohave	3,088	41	901	2,146	54	1,366
Navajo	1,096	24	326	746	29	520
Pima	11,637	99	4,585	6,953	113	6,641
Pinal	4,218	56	1,293	2,869	62	1,969
Santa Cruz	552	3	139	410	3	199
Yavapai	3,588	34	1,082	2,472	40	1,592
Yuma	2,557	16	850	1,691	18	1,240
TOTAL	126,845	865	38,544	87,436	962	56,636

Section 2: – Geographic Location

Table 2 – 3
Crash Severity by First Harmful Event in Urban Areas

First Harmful Event Type	Number of Crashes				Number of Persons	
	Total	Fatal	Injury	PDO	Killed	Injured
Collision with Motor Vehicle in Transport	79,852	194	23,561	56,097	207	36,242
Overturning	949	35	675	239	40	838
Collision with Pedestrian	1,293	152	1,107	34	152	1,193
Collision with Pedalcyclist	1,236	20	1,136	80	20	1,167
Collision with Animal	280	0	25	255	0	31
Collision with Fixed Object	8,585	77	2,495	6,013	88	3,004
Collision with Non-fixed Object*	4,097	6	410	3,681	6	462
Vehicle Fire or Explosion	103	0	0	103	0	0
Other Non-collision**	276	7	63	206	7	65
Unknown	6,566	5	2,073	4,488	5	3,104
TOTAL	103,237	496	31,545	71,196	525	46,106
*Includes Collision with Parked Vehicles, Trains, Railway Vehicles, and Work Zone Equipment						
**Includes Vehicle Immersion, Jackknife, and Cargo Loss or Shift						

Table 2 – 4
Crash Severity by First Harmful Event in Rural Areas

First Harmful Event Type	Number of Crashes				Number of Persons	
	Total	Fatal	Injury	PDO	Killed	Injured
Collision with Motor Vehicle in Transport	13,320	118	4,012	9,190	161	6,487
Overturning	1,912	97	1,117	698	110	1,668
Collision with Pedestrian	131	37	91	3	37	98
Collision with Pedalcyclist	141	9	112	20	10	118
Collision with Animal	1,865	1	161	1,703	1	202
Collision with Fixed Object	4,443	83	1,318	3,042	92	1,709
Collision with Non-fixed Object*	1,140	7	114	1,019	7	160
Vehicle Fire or Explosion	234	1	6	227	1	8
Other Non-collision**	324	2	38	284	2	44
Unknown	98	14	30	54	16	36
TOTAL	23,608	369	6,999	16,240	437	10,530
*Includes Collision with Parked Vehicles, Trains, Railway Vehicles, and Work Zone Equipment						
**Includes Vehicle Immersion, Jackknife, and Cargo Loss or Shift						

While Urban Crashes in Arizona (103,237) accounted for 81.39% of all crashes, they accounted for 57.34% of all Fatal Crashes (496) occurring in 2016.

While Rural Crashes in Arizona (23,608) accounted for 18.61% of all crashes, they accounted for 42.66% of all Fatal Crashes (369) occurring in 2016.

Section 2: – Geographic Location

Table 2 – 5

Analysis by Jurisdiction

COUNTIES Cities	Number of Crashes				No. of Persons		Alcohol Related		
	Total	Fatal	Injury	PDO	Killed	Injured	Crashes	Killed	Injured
Apache County	379	29	119	231	36	207	31	15	46
Eagar	18	0	6	12	0	8	2	0	1
St. Johns	11	0	3	8	0	3	1	0	0
Springerville	16	0	6	10	0	8	0	0	0
TOTAL	424	29	134	261	36	226	34	15	47

Cochise County	626	14	167	445	17	257	27	3	20
Benson	85	0	22	63	0	32	3	0	2
Bisbee	4	2	1	1	2	2	1	1	0
Douglas	115	0	19	96	0	20	3	0	0
Huachuca City	1	0	1	0	0	1	0	0	0
Sierra Vista	506	4	160	342	4	236	23	2	5
Tombstone	17	2	6	9	2	11	2	0	1
Willcox	19	1	5	13	1	9	0	0	0
TOTAL	1,373	23	381	969	26	568	59	6	28

Coconino County	1,558	35	378	1,145	40	616	64	6	60
Flagstaff	2,001	9	403	1,589	10	558	94	5	40
Fredonia	0	0	0	0	0	0	0	0	0
Williams	133	1	23	109	1	36	3	0	1
Page	112	1	22	89	1	33	16	1	6
Sedona	182	0	29	153	0	40	6	0	1
TOTAL	3,986	46	855	3,085	52	1,283	183	12	108

Gila County	551	14	177	360	18	265	29	4	29
Globe	44	1	13	30	2	24	3	0	3
Hayden	0	0	0	0	0	0	0	0	0
Miami	3	0	0	3	0	0	1	0	0
Payson	197	1	62	134	1	86	10	0	6
Winkelman	1	0	0	1	0	0	0	0	0
TOTAL	796	16	252	528	21	375	43	4	38

Graham County	127	4	46	77	5	64	10	5	12
Pima	2	0	1	1	0	1	0	0	0
Safford	70	0	23	47	0	30	5	0	6
Thatcher	57	0	21	36	0	26	2	0	3
TOTAL	256	4	91	161	5	121	17	5	21

Greenlee County	64	0	18	46	0	23	1	0	0
Clifton	23	0	5	18	0	5	0	0	0
Duncan	2	1	1	0	1	4	1	1	0
TOTAL	89	1	24	64	1	32	2	1	0

Section 2: – Geographic Location

Table 2 – 5

Analysis by Jurisdiction

COUNTIES Cities	Number of Crashes				No. of Persons		Alcohol Related		
	Total	Fatal	Injury	PDO	Killed	Injured	Crashes	Killed	Injured
La Paz County	383	12	125	246	15	203	15	1	13
Parker	30	1	9	20	1	12	0	0	0
Quartzite	46	2	16	28	2	28	1	0	1
TOTAL	459	15	150	294	18	243	16	1	14

Maricopa County	6,835	66	2,125	4,644	73	3,024	199	22	152
Avondale	1,402	4	405	993	4	583	61	2	33
Buckeye	662	6	192	464	7	288	30	1	28
Cave Creek	74	1	25	48	1	33	11	1	11
Chandler	4,612	15	1,330	3,267	16	1,948	154	5	94
El Mirage	472	2	108	362	2	153	20	1	7
Gila Bend	52	2	12	38	3	21	2	1	1
Gilbert	2,989	8	599	2,382	8	844	92	2	38
Glendale	5,539	33	1,525	3,981	34	2,417	186	9	137
Goodyear	1,048	8	281	759	8	455	55	3	52
Mesa	7,519	41	2,430	5,048	43	3,326	286	11	197
Paradise Valley	211	0	66	145	0	80	4	0	1
Peoria	2,691	13	898	1,780	13	1,302	107	5	86
Phoenix	42,867	213	12,931	29,723	223	19,361	1,361	97	872
Scottsdale	4,163	16	1,313	2,834	16	1,831	191	7	91
Surprise	1,375	6	340	1,029	8	495	51	6	29
Tempe	8,687	22	2,500	6,165	23	3,526	250	10	125
Tolleson	477	1	119	357	1	173	18	0	14
Wickenburg	135	1	22	112	1	37	8	1	6
Youngtown	53	0	18	35	0	27	2	0	2
Guadalupe	312	0	91	221	0	124	7	0	2
Litchfield Park	57	0	17	40	0	21	2	0	1
Queen Creek	344	0	90	254	0	134	7	0	5
Fountain Hills	113	0	33	80	0	44	4	0	1
Carefree	37	0	11	26	0	14	2	0	1
TOTAL	92,726	458	27,481	64,787	484	40,261	3,110	184	1,986

Mohave County	1,375	35	414	926	47	681	79	9	74
Kingman	575	0	180	395	0	245	27	0	16
Lake Havasu City	579	2	144	433	2	195	46	1	22
Bullhead City	546	4	159	383	5	236	41	3	34
Colorado City	13	0	4	9	0	9	1	0	0
TOTAL	3,088	41	901	2,146	54	1,366	194	13	146

Section 2: – Geographic Location

Table 2 – 5
Analysis by Jurisdiction

COUNTIES Cities	Number of Crashes				No. of Persons		Alcohol Related		
	Total	Fatal	Injury	PDO	Killed	Injured	Crashes	Killed	Injured
Navajo County	595	21	166	408	26	287	40	6	56
Holbrook	60	0	20	40	0	35	2	0	1
Show Low	236	2	83	151	2	115	7	0	5
Snowflake	51	0	11	40	0	20	0	0	0
Taylor	34	0	10	24	0	13	2	0	1
Winslow	24	1	7	16	1	14	3	0	4
Pinetop-Lakeside	96	0	29	67	0	36	7	0	2
TOTAL	1,096	24	326	746	29	520	61	6	69

Pima County	3,665	38	1,096	2,531	45	1,570	209	9	135
South Tucson	111	0	48	63	0	74	2	0	0
Tucson	6,403	49	3,055	3,299	54	4,460	426	18	307
Sahuarita	210	0	67	143	0	112	13	0	7
Oro Valley	457	4	150	303	4	197	12	1	3
Marana	791	8	169	614	10	228	11	4	5
TOTAL	11,637	99	4,585	6,953	113	6,641	673	32	457

Pinal County	2,289	37	727	1,525	41	1,135	125	11	95
Casa Grande	760	6	219	535	6	313	34	2	27
Coolidge	177	3	47	127	3	86	13	2	8
Eloy	114	1	35	78	3	61	3	0	4
Florence	98	0	35	63	0	58	3	0	6
Kearny	6	1	2	3	1	4	0	0	0
Mammoth	2	0	0	2	0	0	1	0	0
Superior	1	0	1	0	0	1	0	0	0
Apache Junction	487	5	157	325	5	216	27	2	14
Maricopa	284	3	70	211	3	95	11	1	9
TOTAL	4,218	56	1,293	2,869	62	1,969	217	18	163

Santa Cruz County	336	3	99	234	3	147	16	0	11
Nogales	213	0	40	173	0	52	5	0	2
Patagonia	3	0	0	3	0	0	0	0	0
TOTAL	552	3	139	410	3	199	21	0	13

Yavapai County	1,768	28	532	1,208	34	837	87	6	64
Clarkdale	14	0	3	11	0	3	0	0	0
Cottonwood	245	0	70	175	0	99	12	0	6
Jerome	12	0	0	12	0	0	1	0	0
Prescott	729	1	220	508	1	294	30	0	25
Prescott Valley	492	3	170	319	3	245	20	0	18
Chino Valley	152	1	34	117	1	48	9	0	2
Camp Verde	147	1	44	102	1	57	10	0	9
Dewey-Humboldt	29	0	9	20	0	9	1	0	1
TOTAL	3,588	34	1,082	2,472	40	1,592	170	6	125

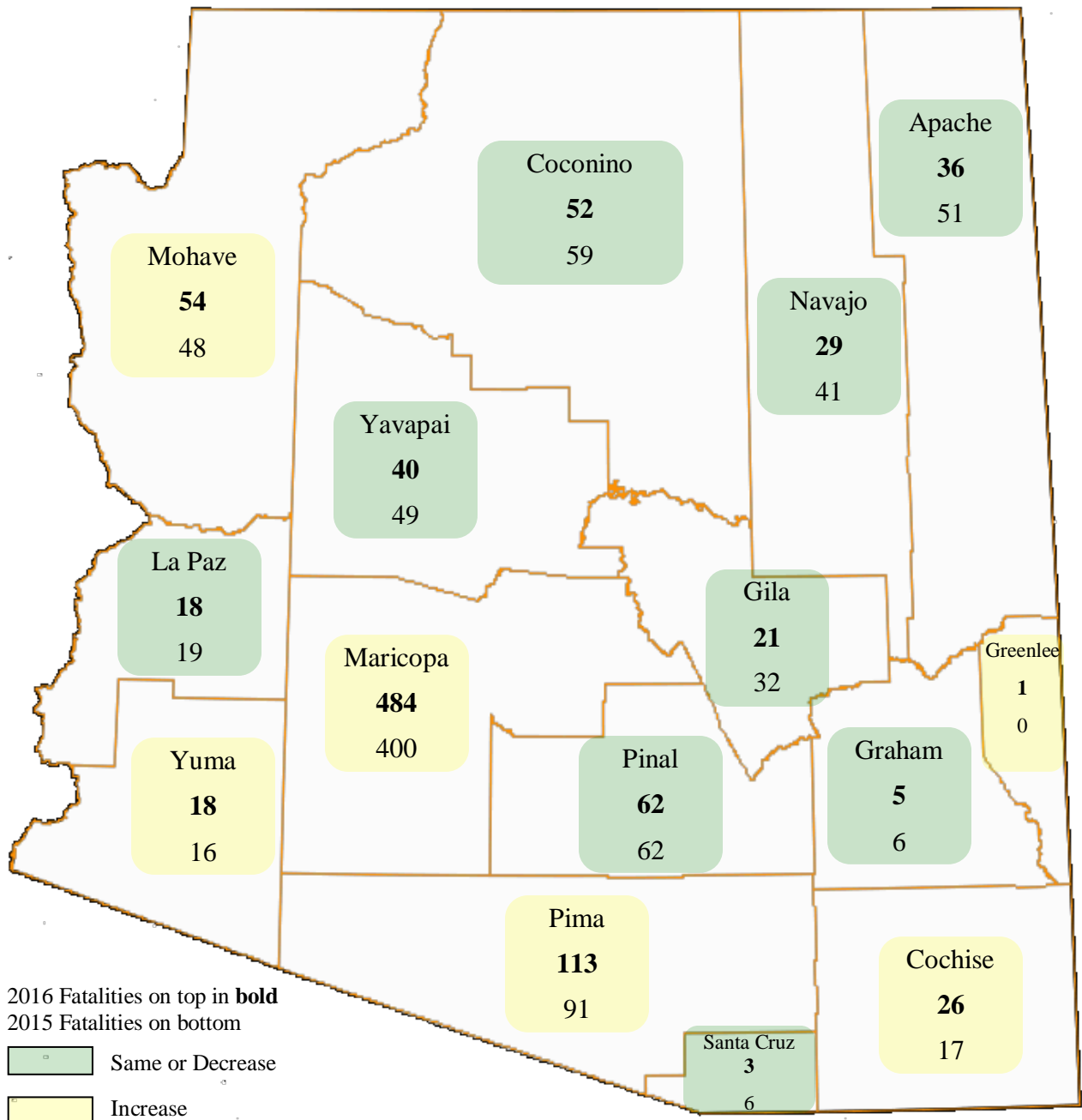
Section 2: – Geographic Location

Table 2 – 5
Analysis by Jurisdiction

COUNTIES Cities	Number of Crashes				No. of Persons		Alcohol Related		
	Total	Fatal	Injury	PDO	Killed	Injured	Crashes	Killed	Injured
Yuma County	720	9	231	480	10	370	31	3	28
Somerton	30	0	9	21	0	13	0	0	0
Yuma	1,595	7	580	1,008	8	815	89	1	53
Wellton	9	0	2	7	0	5	0	0	0
San Luis	203	0	28	175	0	37	3	0	1
TOTAL	2,557	16	850	1,691	18	1,240	123	4	82

Note: Some individual city data may be incomplete due to lack of timely reporting or changes in crash reporting procedures.

Total Fatalities by County for 2015 and 2016



Section 2: – Geographic Location

Chart 2 – 1

Urban and Rural Crashes by Day of Week

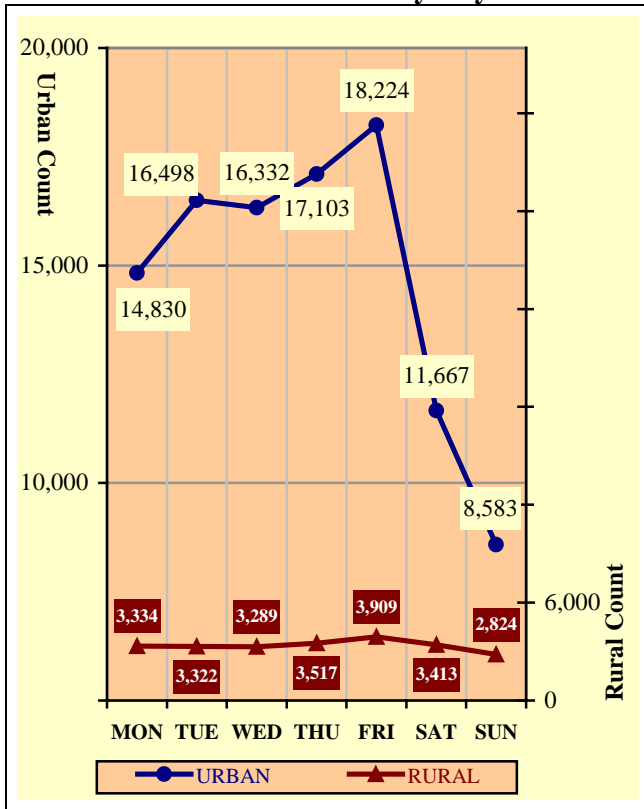


Chart 2 – 2

Urban and Rural Fatal Crashes by Day of Week

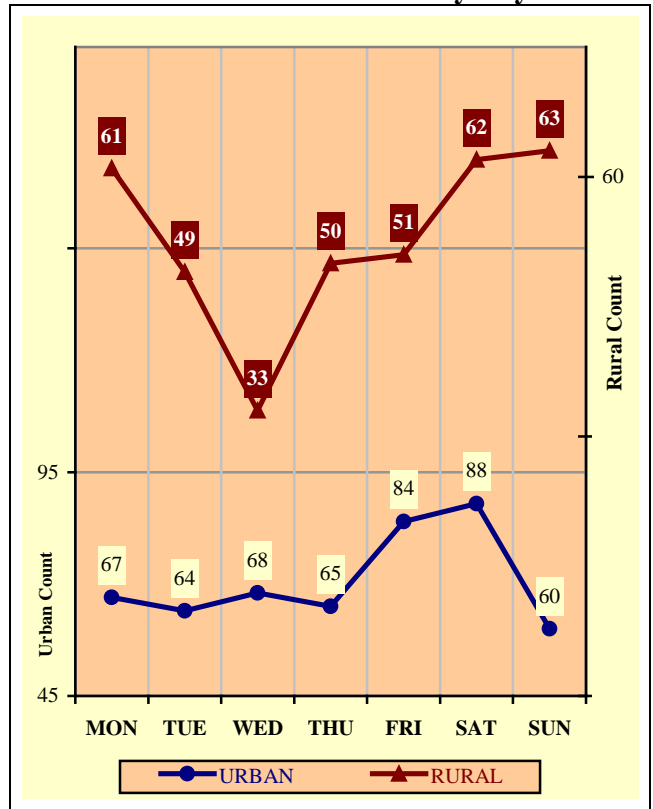
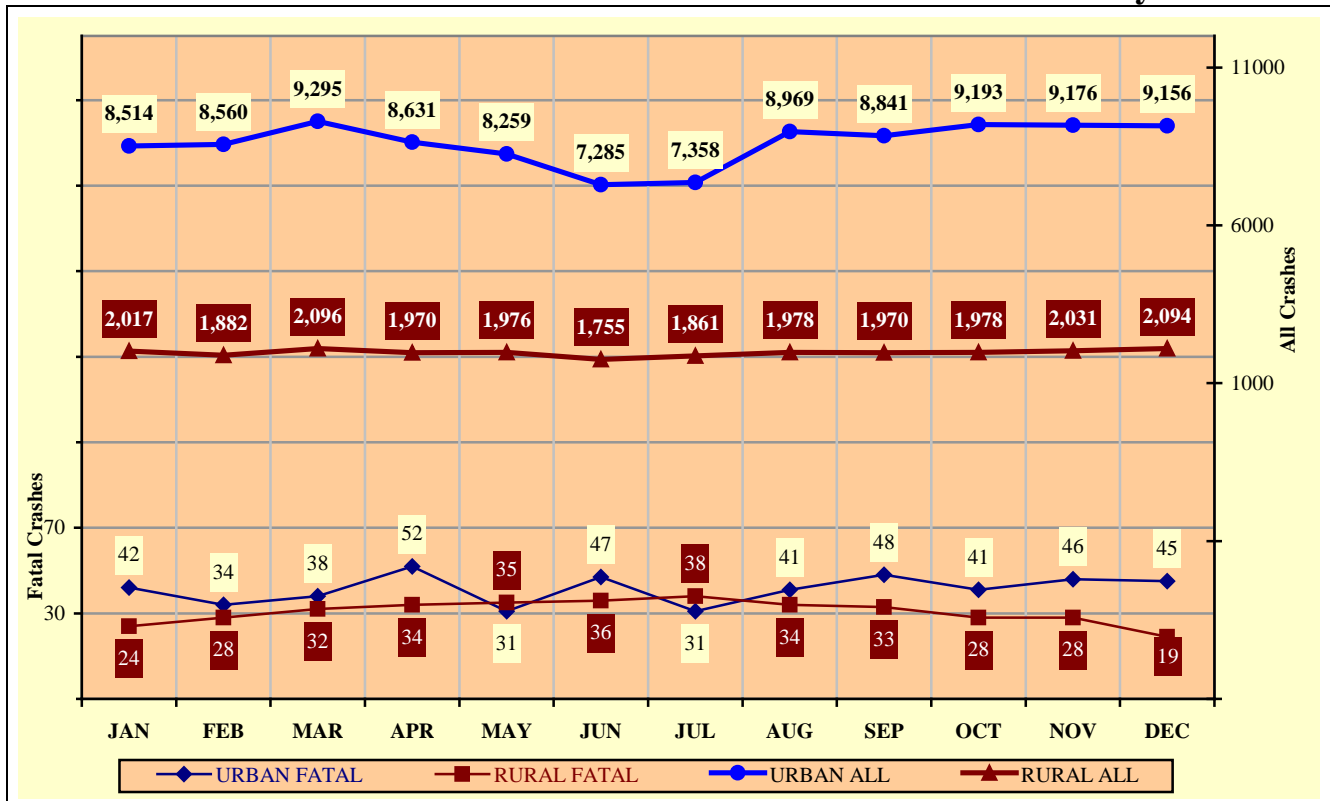


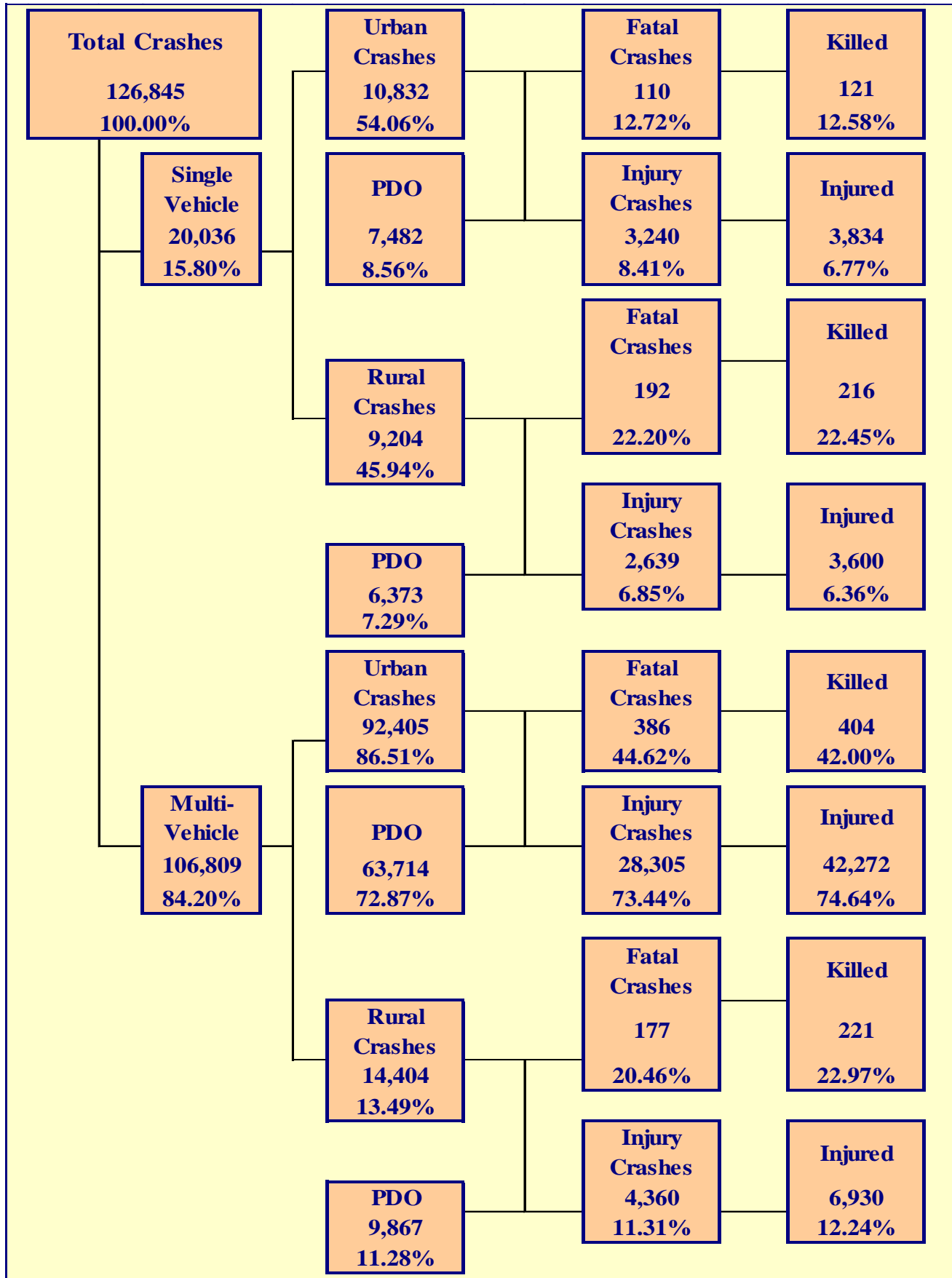
Chart 2 – 3

All Urban and Rural Crashes vs. Urban and Rural Fatal Crashes by Month



Section 3

Crash Descriptions



Section 3: – Crash Descriptions

Table 3 – 1
Manner of Collision in Multi-Vehicle Crashes

Manner of Collision Type	Number of Crashes							
	Total	Percent of Total Crashes	Fatal	Percent of Fatal Crashes	Injury	Percent of Injury Crashes	PDO	Percent of PDO Crashes
Angle	15,717	14.72%	78	13.85%	5,735	17.56%	9,904	13.46%
Left Turn	16,868	15.79%	59	10.48%	6,738	20.63%	10,071	13.69%
Rear End	48,279	45.20%	62	11.01%	14,150	43.32%	34,067	46.30%
Head-On	1,852	1.73%	68	12.08%	820	2.51%	964	1.31%
Sideswipe (same)	15,264	14.29%	24	4.26%	1,789	5.48%	13,451	18.28%
Sideswipe (opposite)	1,560	1.46%	8	1.42%	364	1.11%	1,188	1.61%
Rear to Side	789	0.74%	0	0.00%	51	0.16%	738	1.00%
Rear to Rear	657	0.62%	0	0.00%	141	0.43%	516	0.70%
Other	5,111	4.79%	252	44.76%	2,768	8.47%	2,091	2.84%
Unknown	712	0.67%	12	2.13%	109	0.33%	591	0.80%
TOTAL	106,809	100.00%	563	100.00%	32,665	100.00%	73,581	100.00%

Table 3 – 2
Lighting Conditions

Type of Lighting Conditions	Number of Crashes				Number of Persons	
	Total	Fatal	Injury	PDO	Killed	Injured
Daylight	89,766	381	27,424	61,961	432	40,251
Dawn	2,206	33	626	1,547	35	900
Dusk	3,588	22	1,124	2,442	23	1,691
Dark - Lighted	23,456	178	7,247	16,031	191	10,666
Dark - Not Lighted	7,152	129	2,028	4,995	152	2,950
Dark - Unknown Lighting	677	122	95	460	129	178
TOTAL	126,845	865	38,544	87,436	962	56,636

Table 3 – 3
Weather Conditions

Type of Weather Conditions	Number of Crashes				Number of Persons	
	Total	Fatal	Injury	PDO	Killed	Injured
Clear	109,825	593	33,613	75,619	666	49,348
Cloudy	10,943	70	3,384	7,489	76	4,974
Sleet/Hail	158	2	41	115	3	79
Rain	4,347	18	1,215	3,114	24	1,742
Snow	567	1	95	471	1	142
Severe Crosswinds	86	0	32	54	0	44
Blowing Sand, Soil, Dirt	105	1	33	71	1	51
Fog, Smog, Smoke	41	2	10	29	2	19
Blowing Snow	21	0	6	15	0	9
Other	83	0	23	60	0	34
Unknown	669	178	92	399	189	194
TOTAL	126,845	865	38,544	87,436	962	56,636

Section 3: – Crash Descriptions

**Table 3 – 4
Road Surface Conditions**

Type of Road Surface Condition	Number of Drivers				Number of Persons	
	Total	In Fatal Crashes	In Injury Crashes	In PDO Crashes	Killed	Injured
Dry	231,798	1,034	72,420	158,344	728	53,484
Wet	10,427	37	3,001	7,389	27	2,320
Snow	722	1	112	609	1	106
Slush	154	2	55	97	1	75
Ice/Frost	475	3	87	385	4	87
Water (standing or moving)	280	1	84	195	1	79
Sand	60	4	20	36	3	29
Mud, Dirt, Gravel	429	12	134	283	12	171
Oil	27	0	15	12	0	15
Other	85	6	13	66	3	19
Unknown	2,587	246	429	1,912	182	251
TOTAL	247,044	1,346	76,370	169,328	962	56,636

**Table 3 – 5
Roadway Grade**

Type of Roadway Grade	Number of Drivers				Number of Persons	
	Total	In Fatal Crashes	In Injury Crashes	In PDO Crashes	Killed	Injured
Level	229,159	920	71,120	157,119	635	52,165
Downhill	8,195	104	2,565	5,526	80	2,313
Uphill	6,591	56	1,991	4,544	44	1,618
Hillcrest	493	11	177	305	8	169
Sag/Dip/Bottom	201	6	82	113	8	94
Unknown	2,405	249	435	1,721	187	277
TOTAL	247,044	1,346	76,370	169,328	962	56,636

**Table 3 – 6
Roadway Alignment**

Type of Roadway Alignment	Number of Drivers				Number of Persons	
	Total	In Fatal Crashes	In Injury Crashes	In PDO Crashes	Killed	Injured
Straight	229,733	936	71,650	157,147	632	52,449
Curve Left	6,005	84	1,708	4,213	74	1,683
Curve Right	6,262	72	1,857	4,333	68	1,706
Unknown	5,044	254	1,155	3,635	188	798
TOTAL	247,044	1,346	76,370	169,328	962	56,636

Section 3: – Crash Descriptions

Chart 3 – 1

All Crashes vs. Fatal Crashes by Time of Day - Weekdays

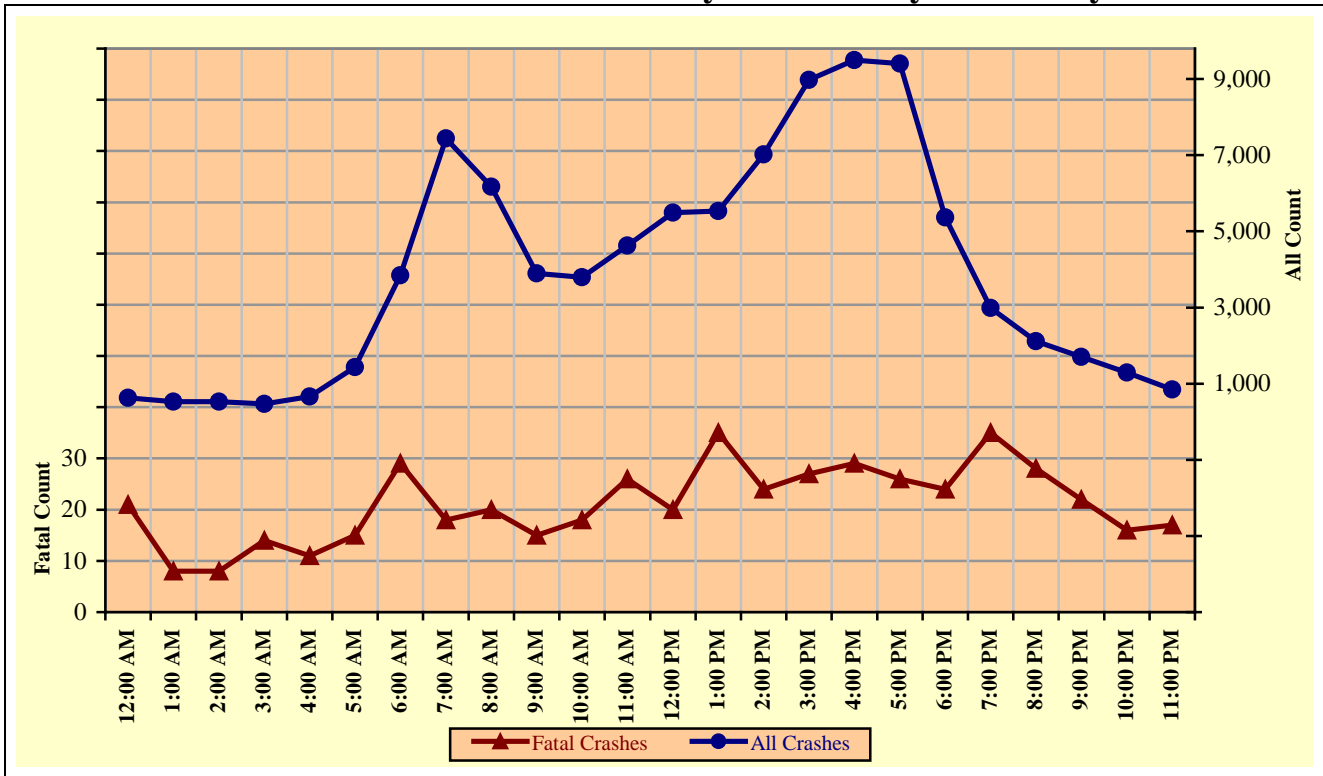
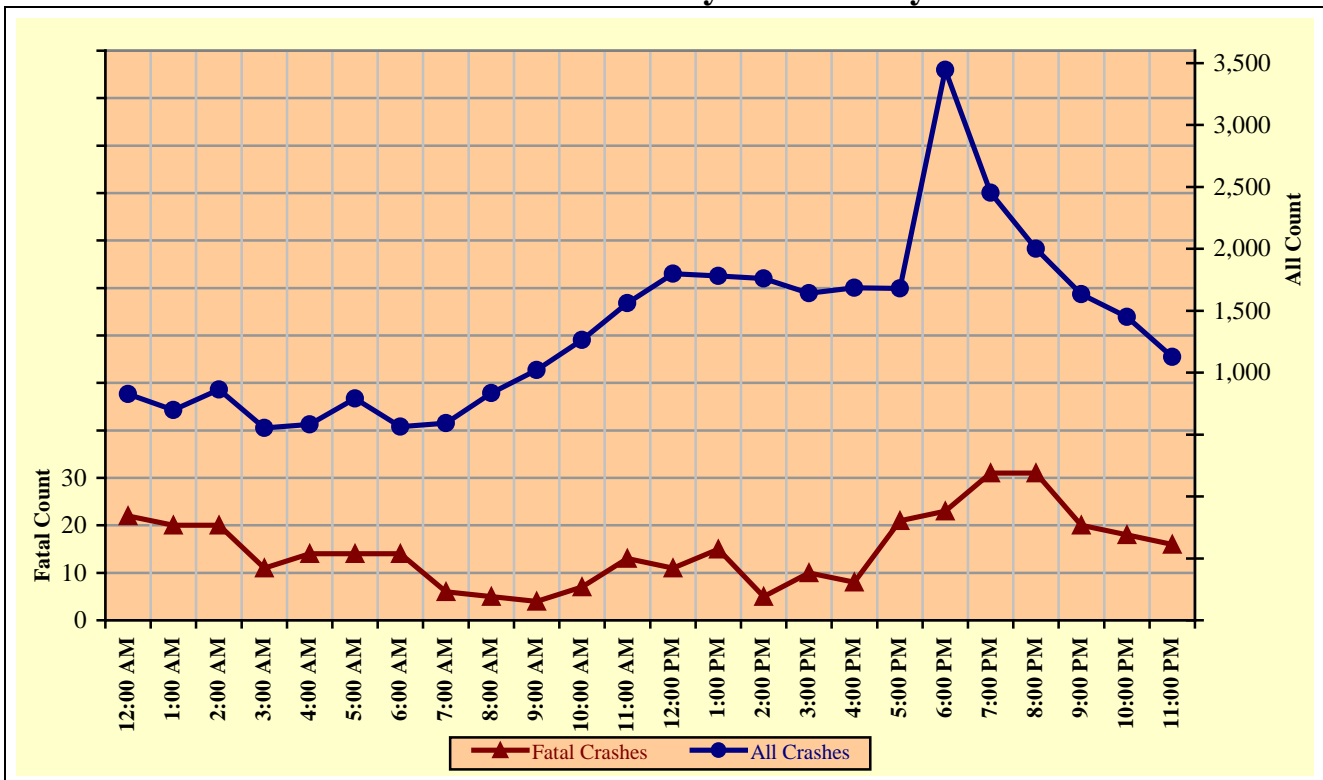


Chart 3 – 2

All Crashes vs. Fatal Crashes by Time of Day - Weekends



Section 3: – Crash Descriptions

Chart 3 – 3
Crashes by Day of Week

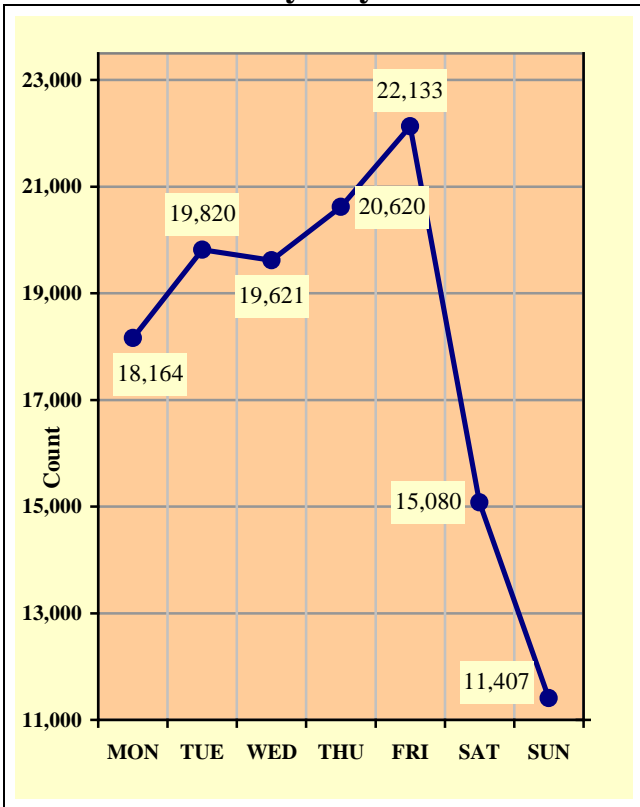


Chart 3 – 4
Fatal Crashes by Day of Week

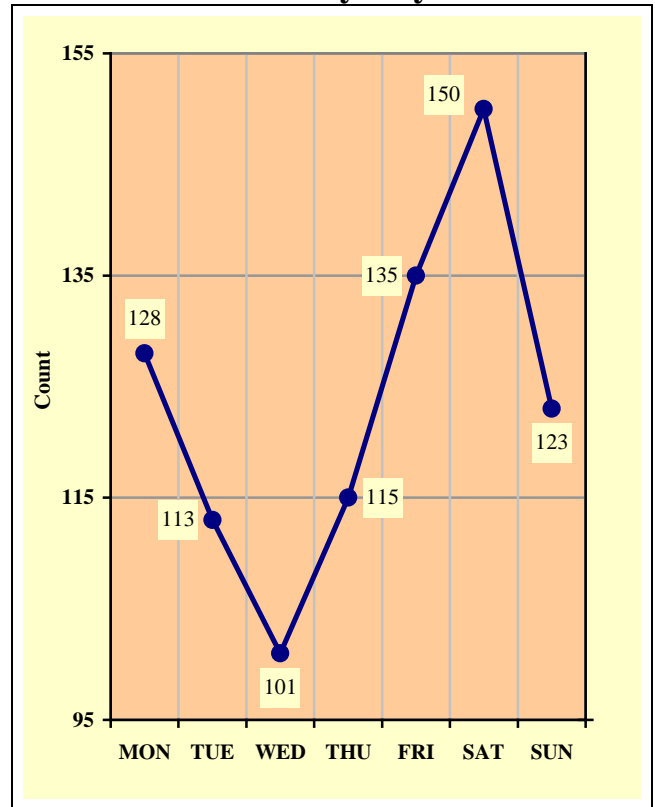
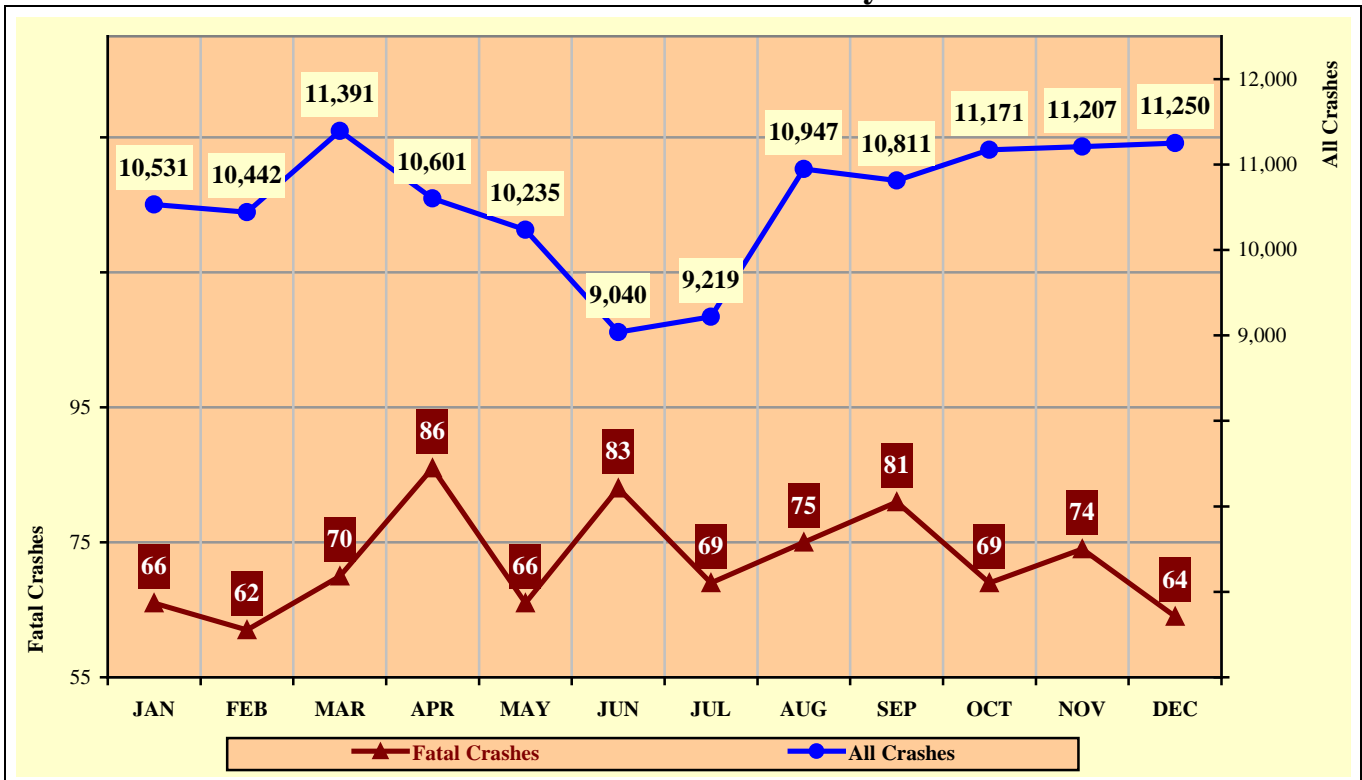


Chart 3 – 5
All Crashes vs. Fatal Crashes by Month



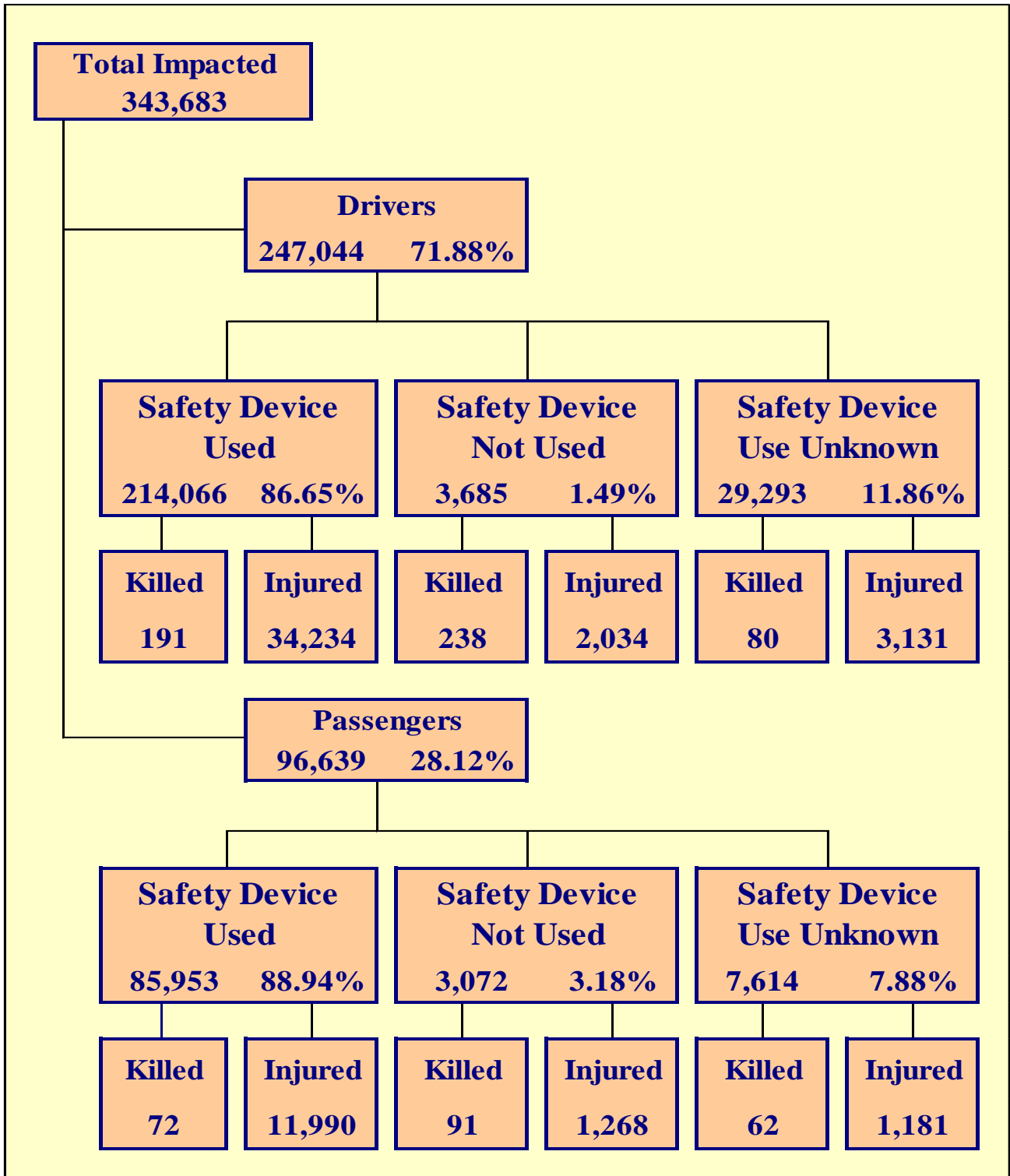
Section 3: – Crash Descriptions

**Table 3 – 7
Crashes by Hour and Day of Week**

Hour Beginning	Total Crashes		Monday		Tuesday		Wednesday		Thursday		Friday		Saturday		Sunday		Weekdays		Weekends	
	All	Fatal	All	Fatal	All	Fatal	All	Fatal	All	Fatal	All	Fatal	All	Fatal	All	Fatal	All	Fatal	All	Fatal
12:00 AM	1,459	43	153	3	133	8	136	4	185	5	177	4	343	8	332	11	631	21	828	22
1:00 AM	1,224	28	128	1	101	3	109	0	127	2	190	3	270	9	299	10	527	8	697	20
2:00 AM	1,386	28	170	6	107	1	101	1	129	3	187	3	349	10	343	4	524	8	862	20
3:00 AM	1,020	25	113	4	98	3	93	3	120	3	157	5	219	5	220	2	468	14	552	11
4:00 AM	1,244	25	157	6	142	2	163	3	171	2	187	4	228	5	196	3	663	11	581	14
5:00 AM	2,222	29	315	8	370	4	343	4	381	5	338	2	278	2	197	4	1,432	15	790	14
6:00 AM	4,404	43	730	7	848	4	810	8	797	5	656	5	298	7	265	7	3,841	29	563	14
7:00 AM	8,028	24	1,379	7	1,689	5	1,606	2	1,473	2	1,289	2	351	5	241	1	7,436	18	592	6
8:00 AM	7,007	25	1,141	4	1,365	8	1,339	5	1,245	2	1,083	1	519	5	315	0	6,173	20	834	5
9:00 AM	4,918	19	694	3	800	3	768	2	813	1	822	6	599	3	422	1	3,897	15	1,021	4
10:00 AM	5,061	25	757	6	740	3	734	3	764	4	802	2	760	3	504	4	3,797	18	1,264	7
11:00 AM	6,188	39	870	8	891	9	865	3	954	1	1,048	5	920	1	640	12	4,628	26	1,560	13
12:00 PM	7,292	31	992	5	1,032	0	1,033	4	1,078	3	1,357	8	1,085	6	715	5	5,492	20	1,800	11
1:00 PM	7,311	50	987	8	981	8	1,132	11	1,110	4	1,320	4	1,043	10	738	5	5,530	35	1,781	15
2:00 PM	8,780	29	1,391	5	1,302	5	1,360	4	1,333	5	1,635	5	1,017	3	742	2	7,021	24	1,759	5
3:00 PM	10,621	37	1,590	8	1,827	4	1,683	6	1,891	5	1,990	4	925	5	715	5	8,981	27	1,640	10
4:00 PM	11,186	37	1,713	4	1,906	6	1,862	3	1,984	10	2,035	6	936	4	750	4	9,500	29	1,686	8
5:00 PM	11,087	47	1,703	3	1,937	6	1,867	5	2,115	4	1,786	8	937	10	742	11	9,408	26	1,679	21
6:00 PM	8,812	47	1,141	1	1,359	5	1,382	8	1,485	10	1,645	12	1,026	8	774	3	5,367	24	3,445	23
7:00 PM	5,437	66	659	10	730	7	730	8	866	10	994	11	791	13	667	7	2,985	35	2,452	31
8:00 PM	4,114	59	493	8	552	5	517	5	551	10	779	12	659	10	563	9	2,113	28	2,001	31
9:00 PM	3,332	42	406	4	406	7	432	5	455	6	635	6	564	9	434	5	1,699	22	1,633	20
10:00 PM	2,742	34	284	4	306	3	340	2	363	7	590	6	525	7	334	5	1,293	16	1,449	18
11:00 PM	1,970	33	198	5	198	4	216	2	230	6	431	11	438	2	259	3	842	17	1,128	16
TOTAL	126,845	865	18,164	128	19,820	113	19,621	101	20,620	115	22,133	135	15,080	150	11,407	123	94,248	506	32,597	359

Crashes during Weekends accounted for 25.70% of all crashes and 41.50% of Fatal Crashes.

Crashes during Weekdays accounted for 74.30% of all crashes and 58.50% of Fatal Crashes.



Section 4: – Safety Devices

**Table 4 – 1
Child Safety Device Usage (less than five years old)**

Severity of Injury	Safety Device Used	Percent of Safety Device Used	Safety Device Not Used	Percent of Safety Device Not Used	Safety Device Use Unknown	Percent of Unknown
No Injury	11,662	91.07%	118	67.82%	239	72.21%
Unknown Injury	136	1.06%	2	1.15%	53	16.01%
Possible Injury	673	5.26%	16	9.20%	17	5.14%
Non-Incapacitating Injury	287	2.24%	26	14.94%	15	4.53%
Incapacitating Injury	44	0.34%	9	5.17%	2	0.60%
Fatal Injury	3	0.02%	3	1.72%	5	1.51%
TOTALS	12,805	100.00%	174	100.00%	331	100.00%

**Table 4 – 2
Driver Safety Device Usage**

Severity of Injury	Safety Device Used	Percent of Safety Device Used	Safety Device Not Used	Percent of Safety Device Not Used	Safety Device Use Unknown	Percent of Unknown
No Injury	178,406	83.34%	1,366	37.07%	14,807	50.55%
Unknown Injury	1,235	0.58%	47	1.28%	11,275	38.49%
Possible Injury	19,680	9.19%	573	15.55%	1,289	4.40%
Non-Incapacitating Injury	12,668	5.92%	978	26.54%	1,335	4.56%
Incapacitating Injury	1,886	0.88%	483	13.11%	507	1.73%
Fatal Injury	191	0.09%	238	6.46%	80	0.27%
TOTALS	214,066	100.00%	3,685	100.00%	29,293	100.00%

**Table 4 – 3
Passenger Safety Device Usage**

Severity of Injury	Safety Device Used	Percent of Safety Device Used	Safety Device Not Used	Percent of Safety Device Not Used	Safety Device Use Unknown	Percent of Unknown
No Injury	73,123	85.07%	1,683	54.79%	5,174	67.95%
Unknown Injury	768	0.89%	30	0.98%	1,197	15.72%
Possible Injury	7,335	8.53%	426	13.87%	533	7.00%
Non-Incapacitating Injury	4,035	4.69%	608	19.79%	468	6.15%
Incapacitating Injury	620	0.72%	234	7.62%	180	2.36%
Fatal Injury	72	0.08%	91	2.96%	62	0.81%
TOTALS	85,953	100.00%	3,072	100.00%	7,614	100.00%

Section 4: – Safety Devices

**Table 4 – 4
Driver Safety Device Usage by Gender**

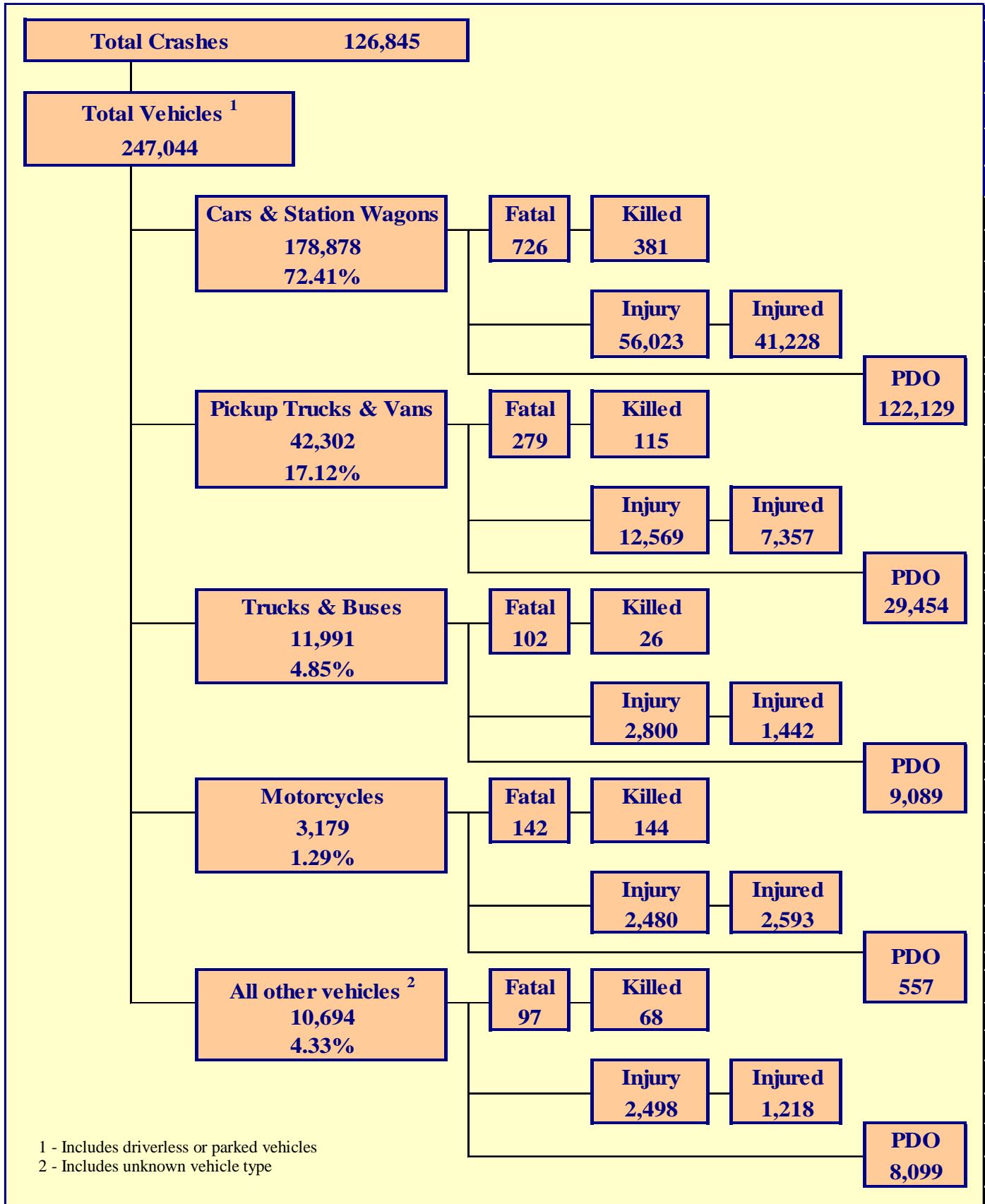
Gender of Driver	Number of Drivers							Total	Percent of Total
	Safety Device Used	Percent of Safety Device Used	Safety Device Not Used	Percent of Safety Device Not Used	Safety Device Use Unknown	Percent of Unknown			
Male	119,583	55.86%	2,649	71.89%	10,015	34.19%	132,247	53.53%	
Female	94,327	44.06%	1,012	27.46%	4,776	16.30%	100,115	40.53%	
Unknown	156	0.07%	24	0.65%	14,502	49.51%	14,682	5.94%	
TOTAL	214,066	100.00%	3,685	100.00%	29,293	100.00%	247,044	100.00%	

**Table 4 – 5
Driver Safety Device Usage by Age**

Driver Age Group	Number of Drivers							Total	Percent of Total
	Safety Device Used	Percent of Safety Device Used	Safety Device Not Used	Percent of Safety Device Not Used	Safety Device Use Unknown	Percent of Unknown			
15 & Under	238	0.11%	34	0.92%	63	0.22%	335	0.14%	
16	2,822	1.32%	39	1.06%	161	0.55%	3,022	1.22%	
17	4,365	2.04%	73	1.98%	231	0.79%	4,669	1.89%	
18	5,902	2.76%	137	3.72%	367	1.25%	6,406	2.59%	
19	6,611	3.09%	144	3.91%	420	1.43%	7,175	2.90%	
20	6,573	3.07%	141	3.83%	384	1.31%	7,098	2.87%	
21	6,420	3.00%	137	3.72%	418	1.43%	6,975	2.82%	
22	6,163	2.88%	146	3.96%	379	1.29%	6,688	2.71%	
23	6,103	2.85%	148	4.02%	403	1.38%	6,654	2.69%	
24	5,945	2.78%	119	3.23%	408	1.39%	6,472	2.62%	
25-34	47,963	22.41%	892	24.21%	3,075	10.50%	51,930	21.02%	
35-44	36,608	17.10%	510	13.84%	2,132	7.28%	39,250	15.89%	
45-54	32,187	15.04%	475	12.89%	1,824	6.23%	34,486	13.96%	
55-64	24,190	11.30%	368	9.99%	1,296	4.42%	25,854	10.47%	
65-74	13,922	6.50%	173	4.69%	716	2.44%	14,811	6.00%	
75 & Older	7,186	3.36%	86	2.33%	376	1.28%	7,648	3.10%	
Unknown	868	0.41%	63	1.71%	16,640	56.81%	17,571	7.11%	
TOTAL	214,066	100.00%	3,685	100.00%	29,293	100.00%	247,044	100.00%	

Section 5

Motor Vehicle and Driver Descriptions



Section 5: – Motor Vehicle and Driver Descriptions

Table 5 – 1

Arizona Motor Vehicle Registrations

Privately Owned Vehicles	4,944,715
Commercial Vehicles	525,385
Buses and Taxis	3,280
Motorcycles	203,498
Mopeds	330
TOTAL	5,677,208
Source: MVD - MV988 MV630419, Currently Registered Vehicles by County Listing, dated 12/31/2016.	

Table 5 – 2

Motor Vehicle Crash Involvement by Vehicle Type

Motor Vehicle Type	Number of Vehicles				
	Total	Percent of Total	In Fatal Crashes	In Injury Crashes	In PDO Crashes
Passenger Cars (Sedans, Convertibles, etc.)	129,230	52.311%	442	40,327	88,461
Station Wagons	49,648	20.097%	284	15,696	33,668
Pickup Trucks	38,091	15.419%	257	11,175	26,659
Vans	4,211	1.705%	22	1,394	2,795
Truck Tractor (with or without Semi-Trailer)	2,522	1.021%	54	618	1,850
Concrete Mixer Trucks	59	0.024%	2	12	45
Dump Trucks	204	0.083%	1	42	161
Garbage Trucks	132	0.053%	1	30	101
Tanker Trucks	40	0.016%	0	8	32
Wrecker or Tow Trucks	131	0.053%	4	42	85
Other Truck Combinations	7,785	3.151%	31	1,803	5,951
School Bus	228	0.092%	2	50	176
Commercial or Non-Commercial Bus	890	0.360%	7	195	688
Motorcycle (two or three wheel)	3,179	1.287%	142	2,480	557
All Terrain Vehicle or Cycle	170	0.069%	20	99	51
Moped	37	0.015%	2	32	3
Recreational Vehicle	200	0.081%	3	47	150
Motor Home or House Car	116	0.047%	0	28	88
Fire Trucks	50	0.020%	0	9	41
Ambulances	51	0.021%	1	16	34
Other Types Of Vehicles	198	0.080%	8	93	97
Vehicle Type Unknown	9,872	3.996%	63	2,174	7,635
TOTAL	247,044	100.00%	1,346	76,370	169,328

Section 5: – Motor Vehicle and Driver Descriptions

Table 5 – 3

Hit and Run Drivers Involved in Crashes

Hit and Run	Number of Crashes				Number of Persons	
	Total	Fatal	Injury	PDO	Killed	Injured
Yes	14,912	53	2,876	11,983	53	3,744
No	111,933	812	35,668	75,453	909	52,892
TOTAL	126,845	865	38,544	87,436	962	56,636

Table 5 – 4

Gender of Drivers Involved in Crashes

Gender of Driver	Number of Drivers							
	Total	Percent of Total	In Fatal Crashes	Percent of Fatal	In Injury Crashes	Percent of Injury	In PDO Crashes	Percent of PDO
Male	132,247	53.53%	919	68.28%	41,058	53.76%	90,270	53.31%
Female	100,115	40.53%	338	25.11%	32,999	43.21%	66,778	39.44%
Unknown	14,682	5.94%	89	6.61%	2,313	3.03%	12,280	7.25%
TOTAL	247,044	100.00%	1,346	100.00%	76,370	100.00%	169,328	100.00%

Table 5 – 5

License Status of Drivers Involved in Crashes

License Status of Driver	Number of Drivers							
	Total	Percent of Total	In Fatal Crashes	Percent of Fatal	In Injury Crashes	Percent of Injury	In PDO Crashes	Percent of PDO
Arizona License	193,994	78.53%	978	72.66%	62,009	81.20%	131,007	77.37%
All Others*	53,050	21.47%	368	27.34%	14,361	18.80%	38,321	22.63%
TOTAL	247,044	100.00%	1,346	100.00%	76,370	100.00%	169,328	100.00%

*Includes drivers that have a suspended, revoked, out-of-state or country license, as well as drivers with no license or unknown license type

Table 5 – 6

Passengers Killed and Injured by Age and Gender

Age of Passenger	Passengers Killed				Passengers Injured			
	Total	Male	Female	Gender Unknown	Total	Male	Female	Gender Unknown
0-4	11	7	4	0	876	453	423	0
5-9	5	4	1	0	1,152	558	594	0
10-14	10	5	5	0	1,252	517	735	0
15-19	26	12	14	0	2,123	832	1,291	0
20-24	30	15	15	0	1,631	690	941	0
25-34	29	16	13	0	1,949	759	1,190	0
35-44	22	11	11	0	1,316	464	852	0
45-54	28	21	7	0	1,254	381	873	0
55-64	20	10	10	0	1,082	273	809	0
65-74	13	7	6	0	803	174	629	0
75 & Older	30	11	19	0	560	153	407	0
Unknown	1	0	0	1	441	160	240	41
TOTAL	225	119	105	1	14,439	5,414	8,984	41

Section 5: – Motor Vehicle and Driver Descriptions

Table 5 – 7

Drivers and Passengers Killed and Injured by Vehicle Type

Motor Vehicle Type	Number of Drivers		Number of Passengers	
	Killed	Injured	Killed	Injured
Passenger Cars (Sedans, Convertibles, etc.)	159	22,054	83	7,765
Station Wagons	86	7,935	53	3,474
Pickup Trucks	71	4,678	33	1,743
Vans	9	572	2	364
Truck Tractor (with or without Semi-Trailer)	11	175	2	51
Concrete Mixer Trucks	0	0	0	2
Dump Trucks	0	14	0	5
Garbage Trucks	0	2	0	1
Tanker Trucks	0	2	0	0
Wrecker or Tow Trucks	0	13	0	3
Other Truck Combinations	4	662	8	309
School Bus	0	11	0	33
Commercial or Non-Commercial Bus	0	35	1	124
Motorcycle (two or three wheel)	134	2,417	10	176
All Terrain Vehicle or Cycle	15	79	6	52
Moped	2	32	0	1
Recreational Vehicle	0	20	2	8
Motor Home or House Car	0	7	0	11
Fire Trucks	0	1	0	1
Ambulances	0	4	1	7
Other Types Of Vehicles	4	73	2	16
Vehicle Type Unknown	14	613	22	293
TOTAL	509	39,399	225	14,439

Table 5 – 8

Drivers Killed and Injured by Age and Gender

Age of Driver	Drivers Killed				Drivers Injured			
	Total	Male	Female	Gender Unknown	Total	Male	Female	Gender Unknown
0-4	0	0	0	0	0	0	0	0
5-9	1	0	1	0	1	1	0	0
10-14	2	1	1	0	18	11	7	0
15-19	29	18	11	0	3,182	1,594	1,588	0
20-24	68	59	9	0	5,669	2,812	2,857	0
25-34	85	68	17	0	8,659	4,243	4,416	0
35-44	69	58	11	0	6,522	3,153	3,369	0
45-54	89	72	17	0	6,077	3,102	2,975	0
55-64	75	64	11	0	4,803	2,492	2,311	0
65-74	43	31	12	0	2,756	1,417	1,339	0
75 & Older	47	35	12	0	1,513	770	743	0
Unknown	1	0	0	1	199	100	46	53
TOTAL	509	406	102	1	39,399	19,695	19,651	53

Section 5: – Motor Vehicle and Driver Descriptions

**Table 5 – 9
Licensed Drivers in Arizona by Age**

Driver Age Group	Male Number	Percent of Male	Female Number	Percent of Female	Total Number	Percent of Total	Cumulative Percent
16	10,373	0.40%	10,669	0.42%	21,042	0.41%	0.41%
17	19,233	0.75%	18,416	0.72%	37,649	0.73%	1.14%
18	27,078	1.05%	25,052	0.98%	52,130	1.02%	2.16%
19	32,873	1.28%	29,364	1.15%	62,237	1.21%	3.37%
20	35,376	1.37%	33,072	1.29%	68,448	1.33%	4.70%
21	37,836	1.47%	35,770	1.40%	73,606	1.43%	6.14%
22	39,557	1.54%	37,832	1.48%	77,389	1.51%	7.64%
23	40,974	1.59%	39,363	1.54%	80,337	1.56%	9.21%
24	43,130	1.67%	41,529	1.62%	84,659	1.65%	10.86%
25-34	463,188	17.98%	456,150	17.83%	919,338	17.90%	28.76%
35-44	468,772	18.19%	452,704	17.69%	921,476	17.94%	46.70%
45-54	474,364	18.41%	454,128	17.75%	928,492	18.08%	64.78%
55-64	435,420	16.90%	451,250	17.64%	886,670	17.27%	82.05%
65-74	283,990	11.02%	302,530	11.82%	586,520	11.42%	93.47%
75 & older	164,533	6.39%	170,736	6.67%	335,269	6.53%	100.00%
TOTALS	2,576,697	100.00%	2,558,565	100.00%	5,135,262	100.00%	100.00%

Source: MVD - MV708 MV650653-1, Point-in-Time Driver Credential Report/All Driver Licenses by Age, Gender, & Class (page 19), dated 1/3/2017.

**Table 5 – 10
Driver Involvement by Age**

Driver Age Group	Number of Drivers							
	Total	Percent of Total	In Fatal Crashes	Percent of Fatal	In Injury Crashes	Percent of Injury	In PDO Crashes	Percent of PDO
15 & Under	335	0.14%	8	0.59%	112	0.15%	215	0.13%
16	3,022	1.22%	7	0.52%	823	1.08%	2,192	1.29%
17	4,669	1.89%	11	0.82%	1,331	1.74%	3,327	1.96%
18	6,406	2.59%	22	1.63%	1,930	2.53%	4,454	2.63%
19	7,175	2.90%	32	2.38%	2,268	2.97%	4,875	2.88%
20	7,098	2.87%	21	1.56%	2,208	2.89%	4,869	2.88%
21	6,975	2.82%	27	2.01%	2,189	2.87%	4,759	2.81%
22	6,688	2.71%	49	3.64%	2,062	2.70%	4,577	2.70%
23	6,654	2.69%	38	2.82%	2,082	2.73%	4,534	2.68%
24	6,472	2.62%	33	2.45%	2,062	2.70%	4,377	2.58%
25-34	51,930	21.02%	240	17.83%	16,433	21.52%	35,257	20.82%
35-44	39,250	15.89%	200	14.86%	12,460	16.32%	26,590	15.70%
45-54	34,486	13.96%	192	14.26%	11,178	14.64%	23,116	13.65%
55-64	25,854	10.47%	191	14.19%	8,575	11.23%	17,088	10.09%
65-74	14,811	6.00%	98	7.28%	4,965	6.50%	9,748	5.76%
75 & Older	7,648	3.10%	77	5.72%	2,627	3.44%	4,944	2.92%
Unknown	17,571	7.11%	100	7.43%	3,065	4.01%	14,406	8.51%
TOTAL	247,044	100.00%	1,346	100.00%	76,370	100.00%	169,328	100.00%

Section 5: – Motor Vehicle and Driver Descriptions

Table 5 – 11
Driver Violations

Type of Violation or Behavior	Number of Drivers							
	Total	Percent of Total	In Fatal Crashes	Percent of Fatal	In Injury Crashes	Percent of Injury	In PDO Crashes	Percent of PDO
No Improper Action	122,463	49.57%	491	36.48%	38,580	50.52%	83,392	49.25%
Speed too Fast for Conditions	45,224	18.31%	169	12.56%	14,293	18.72%	30,762	18.17%
Exceeded Lawful Speed	1,124	0.45%	42	3.12%	485	0.64%	597	0.35%
Failed to Yield Right-Of-Way	21,016	8.51%	86	6.39%	7,979	10.45%	12,951	7.65%
Followed Too Closely	7,259	2.94%	3	0.22%	1,837	2.41%	5,419	3.20%
Ran Stop Sign	1,163	0.47%	15	1.11%	514	0.67%	634	0.37%
Disregarded Traffic Signal	5,556	2.25%	34	2.53%	2,635	3.45%	2,887	1.70%
Made Improper Turn	4,992	2.02%	6	0.45%	1,240	1.62%	3,746	2.21%
Drove in Opposing Lane	1,363	0.55%	63	4.68%	550	0.72%	750	0.44%
Knowingly Operated with Faulty or Missing Equipment	188	0.08%	2	0.15%	63	0.08%	123	0.07%
Required Motorcycle Safety Equipment Not Used	16	0.01%	5	0.37%	7	0.01%	4	0.00%
Passed in No-Passing Zone	114	0.05%	1	0.07%	34	0.04%	79	0.05%
Unsafe Lane Change	7,986	3.23%	9	0.67%	1,174	1.54%	6,803	4.02%
Failed to Keep in Proper Lane	5,182	2.10%	92	6.84%	1,300	1.70%	3,790	2.24%
Disregarded Pavement Markings	240	0.10%	2	0.15%	66	0.09%	172	0.10%
Other Unsafe Passing	668	0.27%	5	0.37%	133	0.17%	530	0.31%
Other	6,567	2.66%	26	1.93%	1,619	2.12%	4,922	2.91%
Unknown	15,923	6.45%	295	21.92%	3,861	5.06%	11,767	6.95%
TOTAL	247,044	100.00%	1,346	100.00%	76,370	100.00%	169,328	100.00%

Table 5 – 12
Driver Physical Condition

Type of Condition	Number of Drivers							
	Total	Percent of Total	In Fatal Crashes	Percent of Fatal	In Injury Crashes	Percent of Injury	In PDO Crashes	Percent of PDO
No Apparent Influence	217,098	87.88%	722	53.64%	67,453	88.32%	148,923	87.95%
Alcohol	4,719	1.91%	197	14.64%	1,992	2.61%	2,530	1.49%
Appeared to be Under the Influence of Drugs*	873	0.35%	80	5.94%	377	0.49%	416	0.25%
Medications	185	0.07%	4	0.30%	89	0.12%	92	0.05%
Illness	691	0.28%	7	0.52%	386	0.51%	298	0.18%
Physical Impairment	202	0.08%	0	0.00%	95	0.12%	107	0.06%
Fell Asleep or Fatigued	1,909	0.77%	19	1.41%	747	0.98%	1,143	0.68%
Other	1,584	0.64%	10	0.74%	409	0.54%	1,165	0.69%
Unknown	19,783	8.01%	307	22.81%	4,822	6.31%	14,654	8.65%
TOTAL	247,044	100.00%	1,346	100.00%	76,370	100.00%	169,328	100.00%
*Illegal drugs or narcotics								

Section 5: – Motor Vehicle and Driver Descriptions

Table 5 – 13

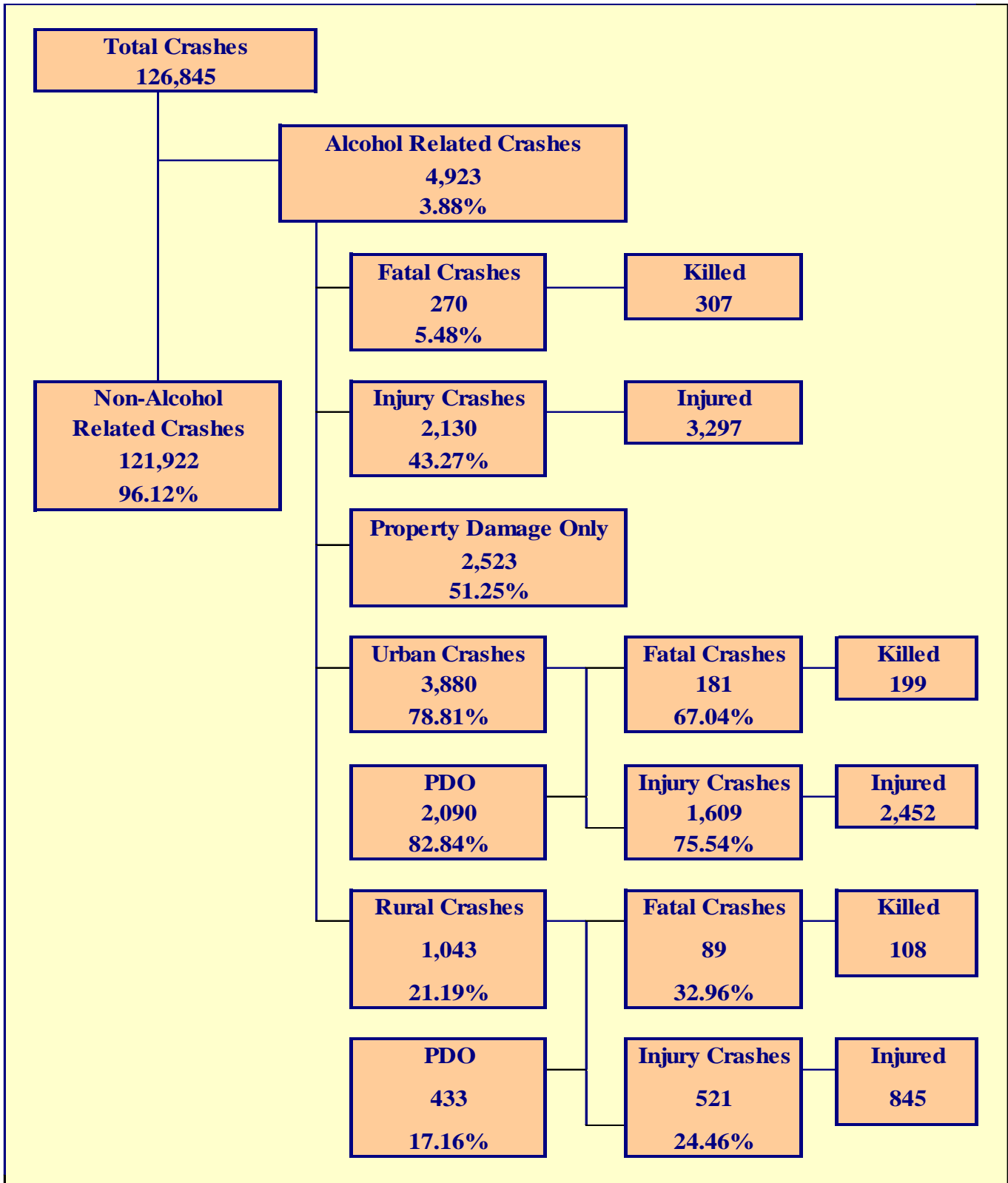
Distracted Driving Behavior

Type of Distraction	Number of Drivers							
	Total	Percent of Total	In Fatal Crashes	Percent of Fatal	In Injury Crashes	Percent of Injury	In PDO Crashes	Percent of PDO
Not Distracted	188,591	76.34%	554	41.16%	58,141	76.13%	129,896	76.71%
Talking on Hands Free Device	220	0.09%	1	0.07%	65	0.09%	154	0.09%
Talking on Hand Held Device	522	0.21%	2	0.15%	185	0.24%	335	0.20%
Passenger	995	0.40%	8	0.59%	350	0.46%	637	0.38%
Other Activity with an Electronic Device	1,338	0.54%	9	0.67%	441	0.58%	888	0.52%
Manually Operating an Electronic Device	776	0.31%	5	0.37%	275	0.36%	496	0.29%
Other Inside the Vehicle (eating, drinking, etc.)	3,166	1.28%	7	0.52%	1,065	1.39%	2,094	1.24%
Outside the Vehicle (includes unspecified distractions)	2,726	1.10%	10	0.74%	867	1.14%	1,849	1.09%
Unknown	48,710	19.72%	750	55.72%	14,981	19.62%	32,979	19.48%
TOTAL	247,044	100.00%	1,346	100.00%	76,370	100.00%	169,328	100.00%

Table 5 – 14

Secondary Crashes

Secondary Crash	Number of Crashes				Number of Persons	
	Total	Fatal	Injury	PDO	Killed	Injured
Yes	3,323	14	1,140	2,169	18	1,904
No	108,941	639	32,845	75,457	719	47,738
Unknown	14,581	212	4,559	9,810	225	6,994
TOTAL	126,845	865	38,544	87,436	962	56,636



Section 6: – Alcohol Related Crashes

The statistics in the Alcohol Related section represent those crashes where the investigating officer indicated that a driver, pedestrian, or pedalcyclist had been drinking an alcoholic beverage and may or may not be substantiated by a blood or breath test. No assumption is to be made that the person was legally intoxicated (blood alcohol content of 0.08% or higher) at the time of the crash.

**Table 6 – 1
Economic Loss Due to Alcohol Related Crashes in Arizona for 2016**

Fatalities	\$1,780,600,000
Incapacitating Injuries	\$254,000,000
Non-Incapacitating Injuries	\$111,040,000
Possible Injuries	\$53,508,000
Property Damage Only	\$10,092,000
TOTAL	\$2,209,240,000

Refer to note on Page 4 for Economic Loss Estimates

**Table 6 – 2
Alcohol Related Crash History**

Year	Alcohol Related Crashes	Percent of all Crashes	Persons Killed	Percent of all Fatalities	Persons Injured	Percent of all Injuries
2012	5,468	5.26%	283	34.47%	3,765	7.52%
2013	5,250	4.88%	282	33.22%	3,529	7.00%
2014	4,918	4.48%	275	35.53%	3,193	6.26%
2015	4,987	4.27%	329	36.68%	3,240	6.04%
2016	4,923	3.88%	307	31.91%	3,297	5.82%

**Table 6 – 3
Manner of Collision in Alcohol Related Crashes**

Manner of Collision Type	Number of Crashes							
	Total	Percent of All Crashes	Fatal	Percent of Fatal Crashes	Injury	Percent of Injury Crashes	PDO	Percent of PDO Crashes
Angle	439	14.75%	13	7.65%	220	16.67%	206	13.85%
Left Turn	316	10.61%	13	7.65%	168	12.73%	135	9.08%
Rear End	1,204	40.44%	16	9.41%	499	37.80%	689	46.33%
Head-On	205	6.89%	24	14.12%	112	8.48%	69	4.64%
Sideswipe (same)	275	9.24%	3	1.76%	58	4.39%	214	14.39%
Sideswipe (opposite)	106	3.56%	1	0.59%	41	3.11%	64	4.30%
Rear to Side	19	0.64%	0	0.00%	2	0.15%	17	1.14%
Rear to Rear	12	0.40%	0	0.00%	7	0.53%	5	0.34%
Other	382	12.83%	99	58.24%	207	15.68%	76	5.11%
Unknown	19	0.64%	1	0.59%	6	0.45%	12	0.81%
TOTAL	2,977	100.00%	170	100.00%	1,320	100.00%	1,487	100.00%

Note: Includes only multi-vehicle alcohol related crashes

Section 6: – Alcohol Related Crashes

Table 6 – 4
Alcohol Related Crashes by First Harmful Event

First Harmful Event Type	Number of Crashes				Number of Persons	
	Total	Fatal	Injury	PDO	Killed	Injured
Collision with Motor Vehicle in Transport	2,209	73	991	1,145	91	1,825
Overturning	228	41	157	30	46	238
Collision with Pedestrian	232	83	145	4	83	169
Collision with Pedalcyclist	41	8	32	1	9	40
Collision with Animal	5	0	3	2	0	4
Collision with Fixed Object	1,693	56	647	990	69	817
Collision with Non-fixed Object*	335	4	80	251	4	96
Vehicle Fire or Explosion	2	1	0	1	1	0
Other Non-collision**	16	2	10	4	2	13
Unknown	162	2	65	95	2	95
TOTAL	4,923	270	2,130	2,523	307	3,297

*Includes Collision with Parked Vehicles, Trains, Railway Vehicles, and Work Zone Equipment

**Includes Vehicle Immersion, Jackknife, and Cargo Loss or Shift

Table 6 – 5
Alcohol Related Crashes by Vehicle Type

Motor Vehicle Type	Number of Vehicles				
	Total	Percent of Total	In Fatal Crashes	In Injury Crashes	In PDO Crashes
Passenger Cars (Sedans, Convertibles, etc.)	2,599	55.075%	60	1,020	1,519
Station Wagons	798	16.910%	36	345	417
Pickup Trucks	910	19.284%	45	402	463
Vans	45	0.954%	1	18	26
Truck Tractor (with or without Semi-Trailer)	8	0.170%	2	3	3
Concrete Mixer Trucks	0	0.000%	0	0	0
Dump Trucks	0	0.000%	0	0	0
Garbage Trucks	0	0.000%	0	0	0
Tanker Trucks	0	0.000%	0	0	0
Wrecker or Tow Trucks	2	0.042%	1	0	1
Other Truck Combinations	64	1.356%	3	25	36
School Bus	0	0.000%	0	0	0
Commercial or Non-Commercial Bus	1	0.021%	0	1	0
Motorcycle (two or three wheel)	181	3.836%	43	131	7
All Terrain Vehicle or Cycle	19	0.403%	3	14	2
Moped	0	0.000%	0	0	0
Recreational Vehicle	8	0.170%	0	2	6
Motor Home or House Car	0	0.000%	0	0	0
Fire Trucks	0	0.000%	0	0	0
Ambulances	0	0.000%	0	0	0
Other Types Of Vehicles	4	0.085%	0	3	1
Vehicle Type Unknown	80	1.695%	3	28	49
TOTAL	4,719	100.00%	197	1,992	2,530

Section 6: – Alcohol Related Crashes

**Table 6 – 6
Lighting Conditions in Alcohol Related Crashes**

Type of Lighting Conditions	Number of Crashes				Number of Persons	
	Total	Fatal	Injury	PDO	Killed	Injured
Daylight	1,454	62	635	757	74	1,018
Dawn	81	6	31	44	7	54
Dusk	133	8	58	67	8	96
Dark - Lighted	2,448	99	1,038	1,311	110	1,554
Dark - Not Lighted	730	54	356	320	63	533
Dark - Unknown Lighting	77	41	12	24	45	42
TOTAL	4,923	270	2,130	2,523	307	3,297

**Table 6 – 7
Road Surface Conditions in Alcohol Related Crashes**

Type of Road Surface Condition	Number of Drivers				Number of Persons	
	Total	In Fatal Crashes	In Injury Crashes	In PDO Crashes	Killed	Injured
Dry	4,386	152	1,873	2,361	228	3,078
Wet	214	6	82	126	11	128
Snow	10	0	3	7	0	2
Slush	0	0	0	0	0	0
Ice/Frost	9	1	5	3	2	5
Water (standing or moving)	4	1	2	1	1	7
Sand	3	1	1	1	2	4
Mud, Dirt, Gravel	43	6	21	16	6	39
Oil	1	0	1	0	0	0
Other	3	1	0	2	3	6
Unknown	46	29	4	13	54	28
TOTAL	4,719	197	1,992	2,530	307	3,297

**Table 6 – 8
Gender of Drivers Involved in Alcohol Related Crashes**

Gender of Driver	Number of Drivers							
	Total	Percent of Total	In Fatal Crashes	Percent of Fatal	In Injury Crashes	Percent of Injury	In PDO Crashes	Percent of PDO
Male	3,447	73.05%	174	88.32%	1,497	75.15%	1,776	70.20%
Female	1,236	26.19%	23	11.68%	493	24.75%	720	28.46%
Unknown	36	0.76%	0	0.00%	2	0.10%	34	1.34%
TOTAL	4,719	100.00%	197	100.00%	1,992	100.00%	2,530	100.00%

In total crashes across the state, 53.53% of the drivers were males. When alcohol was involved, males accounted for 73.05% of the drivers.

Section 6: – Alcohol Related Crashes

**Table 6 – 9
Driver Involvement by Age in Alcohol Related Crashes**

Driver Age Group	Number of Drivers							
	Total	Percent of Total	In Fatal Crashes	Percent of Fatal	In Injury Crashes	Percent of Injury	In PDO Crashes	Percent of PDO
15 & Under	5	0.11%	1	0.51%	4	0.20%	0	0.00%
16	12	0.25%	0	0.00%	8	0.40%	4	0.16%
17	29	0.61%	0	0.00%	15	0.75%	14	0.55%
18	77	1.63%	5	2.54%	36	1.81%	36	1.42%
19	116	2.46%	4	2.03%	54	2.71%	58	2.29%
20	105	2.23%	2	1.02%	51	2.56%	52	2.06%
21	193	4.09%	4	2.03%	75	3.77%	114	4.51%
22	203	4.30%	12	6.09%	78	3.92%	113	4.47%
23	208	4.41%	6	3.05%	84	4.22%	118	4.66%
24	199	4.22%	12	6.09%	84	4.22%	103	4.07%
25-34	1,451	30.75%	59	29.95%	611	30.67%	781	30.87%
35-44	838	17.76%	39	19.80%	367	18.42%	432	17.08%
45-54	608	12.88%	28	14.21%	259	13.00%	321	12.69%
55-64	430	9.11%	15	7.61%	181	9.09%	234	9.25%
65-74	155	3.28%	7	3.55%	63	3.16%	85	3.36%
75 & Older	19	0.40%	0	0.00%	11	0.55%	8	0.32%
Unknown	71	1.50%	3	1.52%	11	0.55%	57	2.25%
TOTAL	4,719	100.00%	197	100.00%	1,992	100.00%	2,530	100.00%

**Table 6 – 10
When Alcohol Related Crashes Occurred in 2016**

Time of Day	Total	Weekday	Weekend*
Daytime**	1,405	893	512
Nighttime	3,518	1,406	2,112
Total	4,923	2,299	2,624
*Weekend begins at 6:00 p.m. on Friday and continues through 6:00 a.m. Monday. All other times and days are considered Weekdays.			
**Daytime refers to the hours between 6:00 a.m. and 6:00 p.m.			

**Table 6 – 11
Safety Device Usage for Drinking Drivers**

Severity of Injury	Safety Device Not Used	Lap Belt	Lap & Shoulder Belt	Protective Helmet	Other	Unknown	Totals
No Injury	123	35	1,918	2	2	873	2,953
Unknown Injury	7	0	35	0	0	156	198
Possible Injury	60	2	279	7	2	153	503
Non-Incapacitating Injury	133	5	307	12	0	209	666
Incapacitating Injury	100	0	76	21	0	76	273
Fatal Injury	87	0	12	9	0	18	126
TOTALS	510	42	2,627	51	4	1,485	4,719

Section 6: – Alcohol Related Crashes

Table 6 – 12

Persons Killed and Injured in Alcohol Related Crashes

Age of Victim	Persons Killed			Persons Injured			
	Total	Male	Female	Total	Male	Female	Gender Unknown
0-4	2	2	0	49	27	22	0
5-9	3	3	0	51	22	29	0
10-14	1	0	1	47	22	25	0
15-19	20	12	8	302	163	139	0
20-24	48	34	14	518	337	181	0
25-34	58	43	15	809	533	276	0
35-44	50	38	12	544	344	200	0
45-54	62	56	6	449	279	170	0
55-64	41	34	7	312	202	110	0
65-74	15	11	4	127	82	45	0
75 & Older	7	4	3	38	20	18	0
Unknown	0	0	0	51	30	15	6
TOTAL	307	237	70	3,297	2,061	1,230	6

Table 6 – 13

Alcohol Related Crashes by County

County	Number of Crashes				Number of Persons	
	Total	Fatal	Injury	PDO	Killed	Injured
Apache	34	11	14	9	15	47
Cochise	59	6	24	29	6	28
Coconino	183	11	74	98	12	108
Gila	43	3	24	16	4	38
Graham	17	4	11	2	5	21
Greenlee	2	1	0	1	1	0
La Paz	16	1	10	5	1	14
Maricopa	3,110	164	1,278	1,668	184	1,986
Mohave	194	11	94	89	13	146
Navajo	61	6	34	21	6	69
Pima	673	28	310	335	32	457
Pinal	217	16	102	99	18	163
Santa Cruz	21	0	10	11	0	13
Yavapai	170	5	87	78	6	125
Yuma	123	3	58	62	4	82
TOTAL	4,923	270	2,130	2,523	307	3,297

Section 6: – Alcohol Related Crashes

Chart 6 – 1

All Alcohol Related Crashes vs. Fatal Alcohol Related Crashes by Day of Week

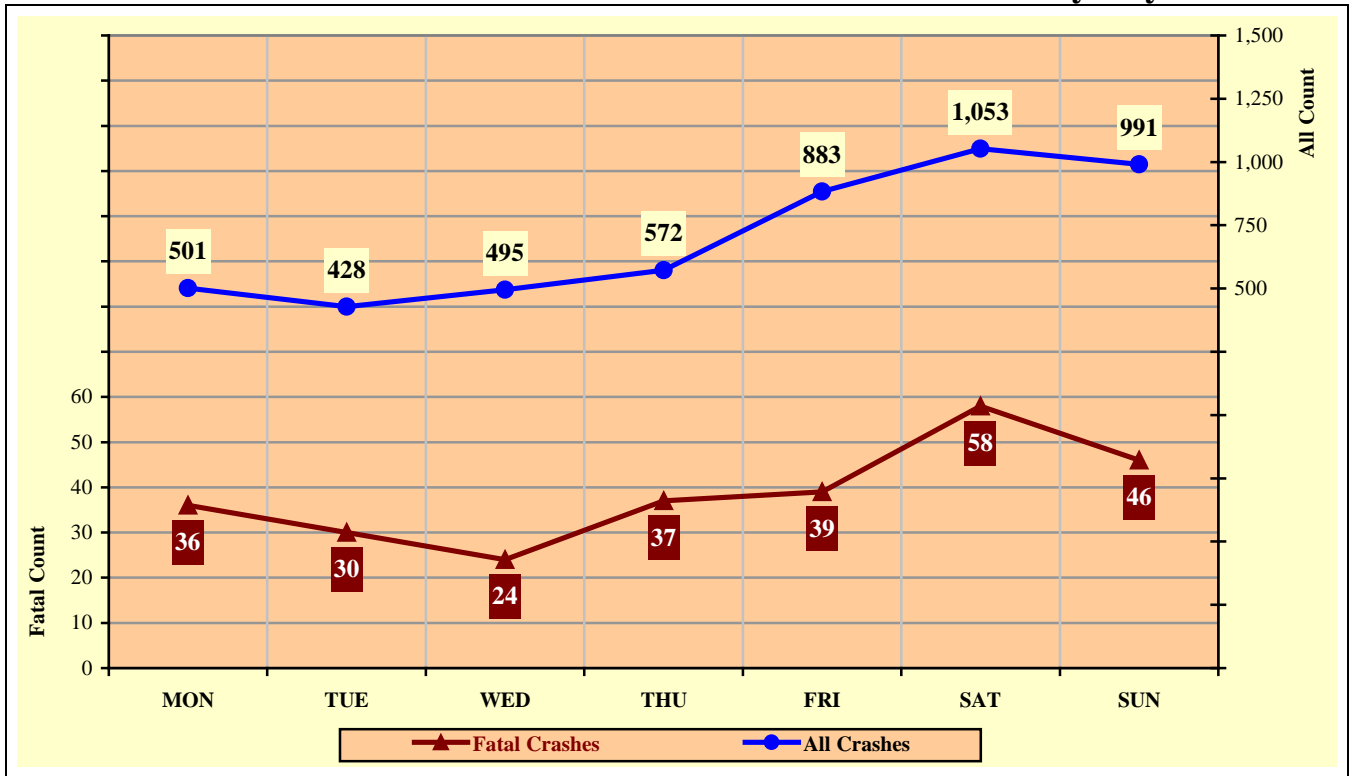
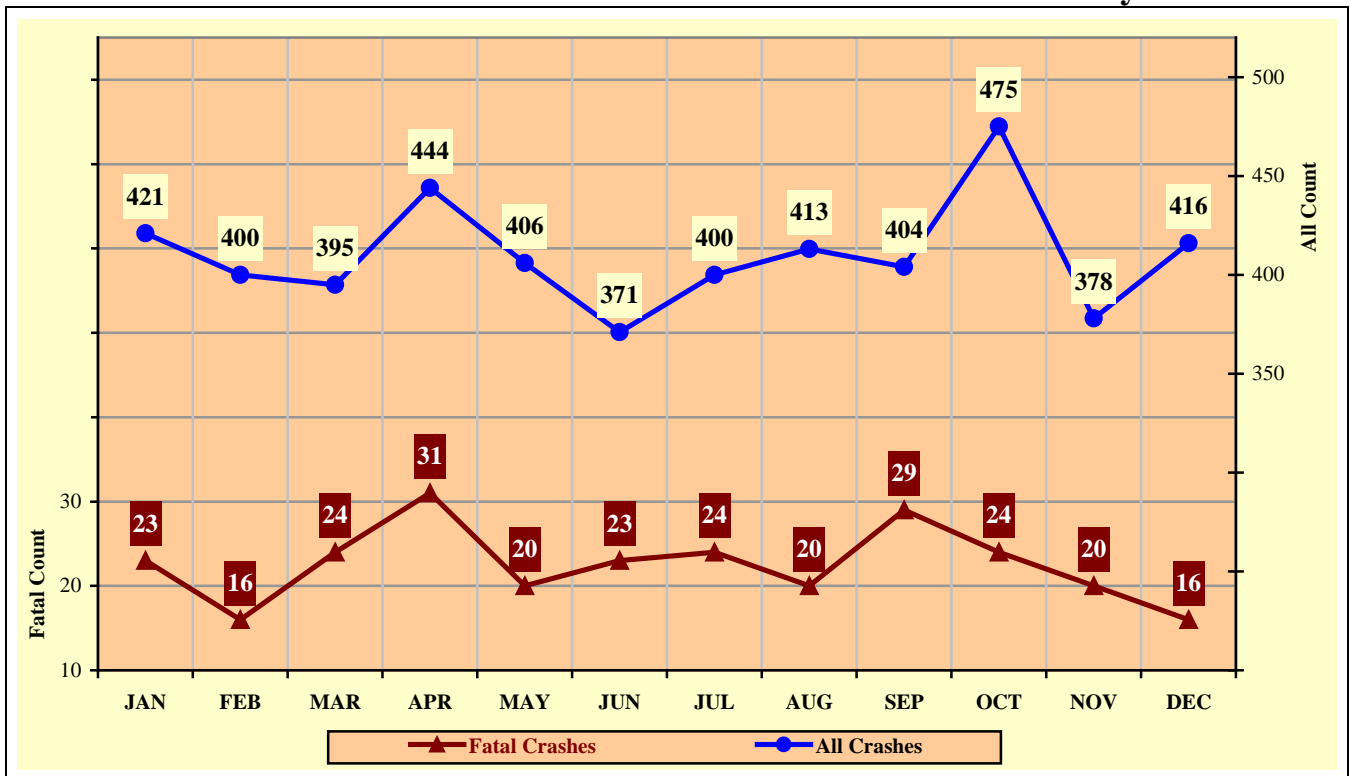


Chart 6 – 2

All Alcohol Related Crashes vs. Fatal Alcohol Related Crashes by Month



Section 6: – Alcohol Related Crashes

Chart 6 – 3

All Alcohol Related Crashes vs. Fatal Alcohol Related Crashes - Weekdays

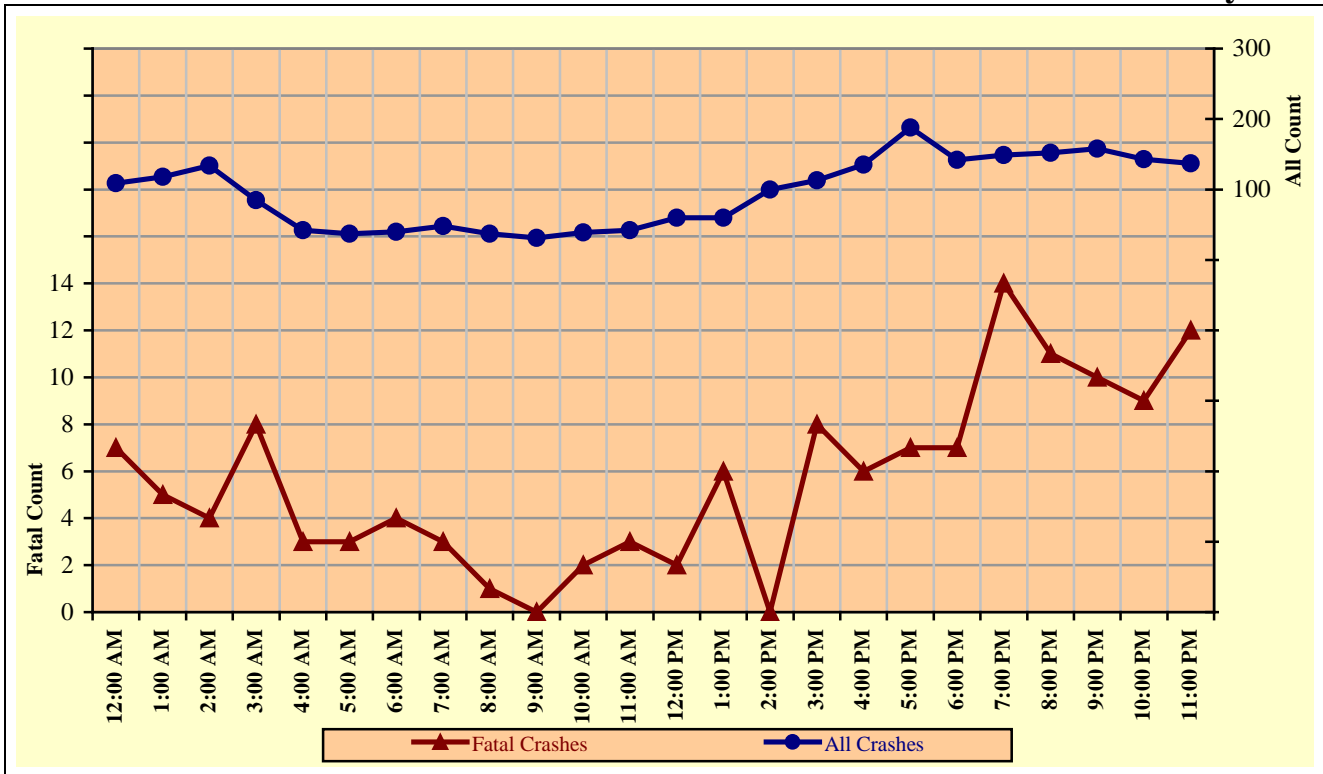
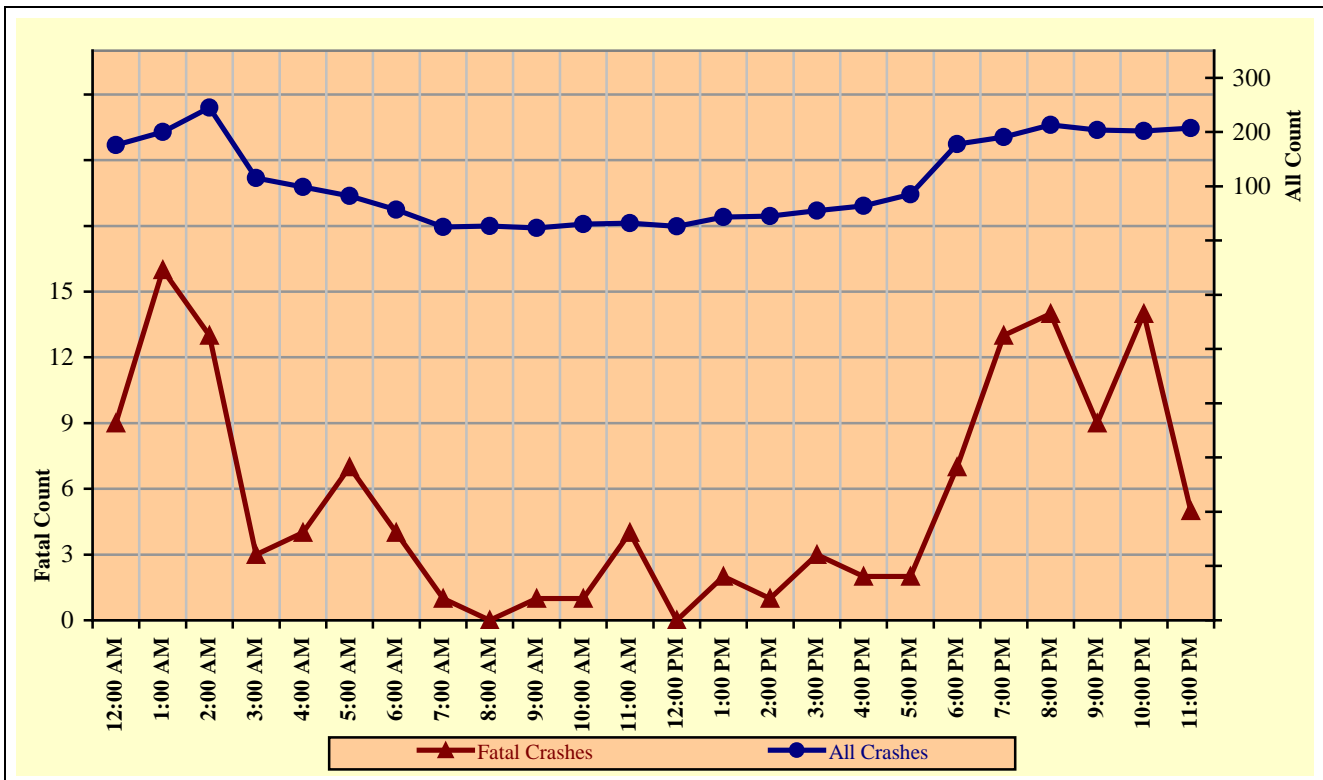


Chart 6 – 4

All Alcohol Related Crashes vs. Fatal Alcohol Related Crashes - Weekends



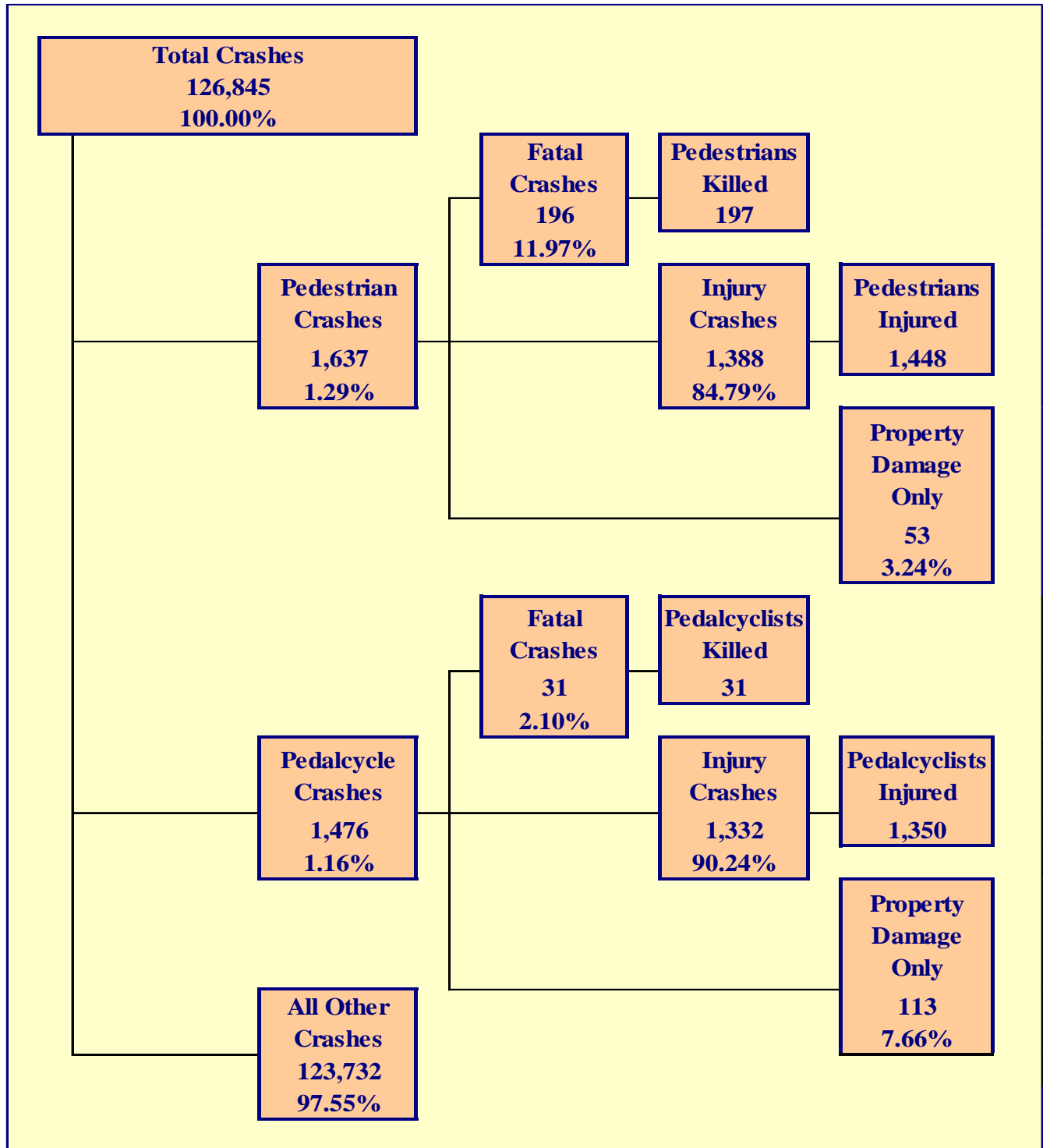
Section 6: – Alcohol Related Crashes

Table 6 – 14
Alcohol Related Crashes by Hour and Day of Week

Hour Beginning	Total Crashes		Monday		Tuesday		Wednesday		Thursday		Friday		Saturday		Sunday		Weekdays		Weekends	
	All	Fatal	All	Fatal	All	Fatal	All	Fatal	All	Fatal	All	Fatal	All	Fatal	All	Fatal	All	Fatal	All	Fatal
12:00 AM	285	16	26	0	19	4	27	0	30	2	33	1	68	4	82	5	109	7	176	9
1:00 AM	318	21	32	1	16	1	22	0	24	2	56	2	75	6	93	9	118	5	200	16
2:00 AM	379	17	40	4	20	0	20	1	35	0	59	3	101	7	104	2	134	4	245	13
3:00 AM	200	11	12	0	10	2	15	2	23	1	37	3	57	2	46	1	85	8	115	3
4:00 AM	141	7	12	1	6	1	8	0	12	1	16	1	45	2	42	1	42	3	99	4
5:00 AM	119	10	11	3	8	0	4	1	12	2	13	0	35	1	36	3	37	3	82	7
6:00 AM	97	8	6	0	9	2	7	1	5	1	13	0	29	3	28	1	40	4	57	4
7:00 AM	73	4	9	1	9	2	12	0	4	0	14	0	11	1	14	0	48	3	25	1
8:00 AM	64	1	7	0	7	0	6	1	6	0	11	0	13	0	14	0	37	1	27	0
9:00 AM	54	1	8	0	3	0	7	0	3	0	10	0	11	1	12	0	31	0	23	1
10:00 AM	69	3	4	1	10	0	10	0	7	1	8	0	16	0	14	1	39	2	30	1
11:00 AM	74	7	5	1	7	1	7	0	17	1	6	0	9	0	23	4	42	3	32	4
12:00 PM	86	2	13	0	11	0	10	0	10	1	16	1	14	0	12	0	60	2	26	0
1:00 PM	103	8	10	1	16	3	14	2	9	0	11	0	28	2	15	0	60	6	43	2
2:00 PM	145	1	17	0	20	0	19	0	18	0	26	0	24	1	21	0	100	0	45	1
3:00 PM	168	11	21	4	18	0	18	3	20	0	36	1	25	1	30	2	113	8	55	3
4:00 PM	199	8	25	1	32	2	24	0	27	2	27	1	29	1	35	1	135	6	64	2
5:00 PM	273	9	32	0	36	1	34	1	42	1	44	4	42	0	43	2	188	7	85	2
6:00 PM	320	14	33	1	26	1	34	2	49	3	60	2	62	4	56	1	142	7	178	7
7:00 PM	340	27	32	3	38	3	44	4	35	4	74	5	55	6	62	2	149	14	191	13
8:00 PM	365	25	40	4	33	2	34	1	45	4	75	4	73	6	65	4	152	11	213	14
9:00 PM	362	19	39	2	24	2	43	2	52	4	77	3	83	4	44	2	158	10	204	9
10:00 PM	345	23	37	3	28	2	37	2	41	2	73	4	75	6	54	4	143	9	202	14
11:00 PM	344	17	30	5	22	1	39	1	46	5	88	4	73	0	46	1	137	12	207	5
TOTAL	4,923	270	501	36	428	30	495	24	572	37	883	39	1,053	58	991	46	2,299	135	2,624	135

Crashes during Weekends accounted for 53.30% of all Alcohol Related crashes and 50.00% of Alcohol Related Fatal Crashes.

Crashes during Weekdays accounted for 46.70% of all Alcohol Related crashes and 50.00% of Alcohol Related Fatal Crashes.



Section 7: – Pedestrian and Pedalcyclist Crashes

**Table 7 – 1
Pedestrians Killed and Injured By Age and Gender**

Age Group	Pedestrians Killed				Pedestrians Injured			
	Total	Male	Female	Gender Unknown	Total	Male	Female	Gender Unknown
0-4	3	2	1	0	21	8	13	0
5-9	1	1	0	0	51	33	18	0
10-14	3	2	1	0	81	53	28	0
15-19	4	3	1	0	197	129	68	0
20-24	13	7	6	0	147	87	60	0
25-34	25	14	11	0	267	171	96	0
35-44	34	22	12	0	196	121	75	0
45-54	40	31	9	0	153	98	55	0
55-64	40	28	12	0	177	108	69	0
65-74	23	14	9	0	85	59	26	0
75 & Older	10	8	2	0	45	29	16	0
Unknown	1	0	0	1	28	20	6	2
TOTAL	197	132	64	1	1,448	916	530	2

**Table 7 – 2
Pedestrian Crashes by Geographic Location**

Category	Total	Urban	Percent of Total	Rural	Percent of Total
Total Crashes	1,637	1,492	91.14%	145	8.86%
Fatal Crashes	196	155	79.08%	41	20.92%
Injury Crashes	1,388	1,289	92.87%	99	7.13%
PDO Crashes	53	48	90.57%	5	9.43%
Pedestrians Killed	197	155	78.68%	42	21.32%
Pedestrians Injured	1,448	1,345	92.89%	103	7.11%

**Table 7 – 3
Pedestrian Crash History**

Year	Pedestrian Crashes	Percent of all Crashes	Pedestrians Killed	Percent of all Fatalities	Pedestrians Injured	Percent of all Injuries
2012	1,583	1.52%	131	15.96%	1,366	2.73%
2013	1,608	1.49%	160	18.85%	1,366	2.71%
2014	1,569	1.43%	155	20.03%	1,357	2.66%
2015	1,408	1.21%	163	18.17%	1,243	2.32%
2016	1,637	1.29%	197	20.48%	1,448	2.56%

Section 7: – Pedestrian and Pedalcyclist Crashes

Table 7 – 4
Pedestrians Killed by Age and Action

Pedestrian Action	Total	Age Group of Pedestrian											
		0-4	5-9	10-14	15-19	20-24	25-34	35-44	45-54	55-64	65-74	75 & Older	Unknown
Crossing Road	121	3	1	2	1	6	15	19	29	27	11	7	0
Walking With Traffic	13	0	0	0	0	1	3	4	0	1	4	0	0
Walking Against Traffic	10	0	0	0	1	0	2	3	2	1	1	0	0
Standing	15	0	0	0	1	3	1	3	1	3	2	1	0
Lying	2	0	0	0	0	0	1	0	0	0	1	0	0
Getting on/off Vehicle	0	0	0	0	0	0	0	0	0	0	0	0	0
Working on/pushing Veh	3	0	0	0	1	0	0	0	0	1	0	1	0
Working on Road	0	0	0	0	0	0	0	0	0	0	0	0	0
Other	10	0	0	0	0	1	0	2	2	3	1	1	0
Unknown	23	0	0	1	0	2	3	3	6	4	3	0	1
TOTAL	197	3	1	3	4	13	25	34	40	40	23	10	1

Table 7 – 5
Pedestrians Injured by Age and Action

Pedestrian Action	Total	Age Group of Pedestrian											
		0-4	5-9	10-14	15-19	20-24	25-34	35-44	45-54	55-64	65-74	75 & Older	Unknown
Crossing Road	923	14	42	58	125	86	155	116	92	127	63	31	14
Walking With Traffic	83	0	1	3	10	13	19	13	9	12	2	0	1
Walking Against Traffic	108	1	1	1	18	8	27	14	15	10	7	6	0
Standing	78	0	0	2	5	8	16	16	13	11	2	1	4
Lying	7	0	0	0	0	0	3	1	0	1	0	1	1
Getting on/off Vehicle	3	0	0	0	0	0	2	0	0	0	0	1	0
Working on/pushing Veh	15	0	0	0	3	4	4	2	0	1	1	0	0
Working on Road	10	0	0	1	1	2	2	1	1	1	0	0	1
Other	156	4	5	14	26	21	22	23	17	10	9	4	1
Unknown	65	2	2	2	9	5	17	10	6	4	1	1	6
TOTAL	1,448	21	51	81	197	147	267	196	153	177	85	45	28

Table 7 – 6
Pedestrian Physical Condition in Motor Vehicle Crashes

Type of Condition	Number of Pedestrians							
	Total	Percent of Total	In Fatal Crashes	Percent of Fatal	In Injury Crashes	Percent of Injury	In PDO Crashes	Percent of PDO
No Apparent Influence	1,073	62.06%	36	17.56%	998	68.08%	39	67.24%
Alcohol	220	12.72%	77	37.56%	139	9.48%	4	6.90%
Appeared to be Under the Influence of Drugs*	33	1.91%	24	11.71%	9	0.61%	0	0.00%
Medications	0	0.00%	0	0.00%	0	0.00%	0	0.00%
Illness	5	0.29%	0	0.00%	5	0.34%	0	0.00%
Physical Impairment	5	0.29%	0	0.00%	5	0.34%	0	0.00%
Fell Asleep or Fatigued	2	0.12%	0	0.00%	2	0.14%	0	0.00%
Other	10	0.58%	0	0.00%	10	0.68%	0	0.00%
Unknown	381	22.04%	68	33.17%	298	20.33%	15	25.86%
TOTAL	1,729	100.00%	205	100.00%	1,466	100.00%	58	100.00%

*Illegal drugs or narcotics

Section 7: – Pedestrian and Pedalcyclist Crashes

Table 7 – 7

Lighting Conditions in Pedestrian Crashes

Type of Lighting Conditions	Number of Crashes			
	Total	Fatal	Injury	PDO
Daylight	804	34	735	35
Dawn	29	5	23	1
Dusk	46	3	41	2
Dark - Lighted	546	72	463	11
Dark - Not Lighted	156	34	118	4
Dark - Unknown Lighting	56	48	8	0
TOTAL	1,637	196	1,388	53

Table 7 – 8

Weather Conditions in Pedestrian Crashes

Type of Weather Conditions	Number of Crashes			
	Total	Fatal	Injury	PDO
Clear	1,382	114	1,220	48
Cloudy	124	17	103	4
Sleet/Hail	1	1	0	0
Rain	56	3	52	1
Snow	1	0	1	0
Severe Crosswinds	0	0	0	0
Blowing Sand, Soil, Dirt	0	0	0	0
Fog, Smog, Smoke	0	0	0	0
Blowing Snow	0	0	0	0
Other	1	0	1	0
Unknown	72	61	11	0
TOTAL	1,637	196	1,388	53

Table 7 – 9

Pedalcyclists Killed and Injured by Age and Gender

Age Group	Pedalcyclists Killed			Pedalcyclists Injured			
	Total	Male	Female	Total	Male	Female	Gender Unknown
0-4	0	0	0	7	6	1	0
5-9	0	0	0	25	17	8	0
10-14	0	0	0	104	78	26	0
15-19	1	0	1	168	140	28	0
20-24	2	1	1	141	106	35	0
25-34	4	3	1	259	192	67	0
35-44	4	4	0	161	109	52	0
45-54	5	5	0	213	161	52	0
55-64	4	3	1	149	122	27	0
65-74	8	5	3	81	75	6	0
75 & Older	3	3	0	20	19	1	0
Unknown	0	0	0	22	10	4	8
TOTAL	31	24	7	1,350	1,035	307	8

Section 7: – Pedestrian and Pedalcyclist Crashes

Table 7 – 10

Pedalcycle Crashes by Geographic Location

Category	Total	Urban	Percent of Total	Rural	Percent of Total
Total Crashes	1,476	1,333	90.31%	143	9.69%
Fatal Crashes	31	21	67.74%	10	32.26%
Injury Crashes	1,332	1,219	91.52%	113	8.48%
PDO Crashes	113	93	82.30%	20	17.70%
Pedalcyclists Killed	31	20	64.52%	11	35.48%
Pedalcyclists Injured	1,350	1,232	91.26%	118	8.74%

Table 7 – 11

Pedalcycle Crash History

Year	Pedalcycle Crashes	Percent of all Crashes	Pedalcyclists Killed	Percent of all Fatalities	Pedalcyclists Injured	Percent of all Injuries
2012	2,147	2.07%	18	2.19%	1,767	3.53%
2013	2,039	1.90%	29	3.42%	1,680	3.33%
2014	1,745	1.59%	29	3.75%	1,468	2.88%
2015	1,434	1.23%	28	3.12%	1,277	2.38%
2016	1,476	1.16%	31	3.22%	1,350	2.38%

Table 7 – 12

Lighting Conditions in Pedalcyclist Crashes

Type of Lighting Conditions	Number of Crashes			
	Total	Fatal	Injury	PDO
Daylight	1,121	19	1,020	82
Dawn	22	2	20	0
Dusk	52	2	45	5
Dark - Lighted	230	4	203	23
Dark - Not Lighted	41	0	39	2
Dark - Unknown Lighting	10	4	5	1
TOTAL	1,476	31	1,332	113

Table 7 – 13

Weather Conditions in Pedalcyclist Crashes

Type of Weather Conditions	Number of Crashes			
	Total	Fatal	Injury	PDO
Clear	1,329	19	1,206	104
Cloudy	105	3	95	7
Sleet/Hail	0	0	0	0
Rain	22	0	21	1
Snow	0	0	0	0
Severe Crosswinds	0	0	0	0
Blowing Sand, Soil, Dirt	1	0	1	0
Fog, Smog, Smoke	0	0	0	0
Blowing Snow	0	0	0	0
Other	2	0	2	0
Unknown	17	9	7	1
TOTAL	1,476	31	1,332	113

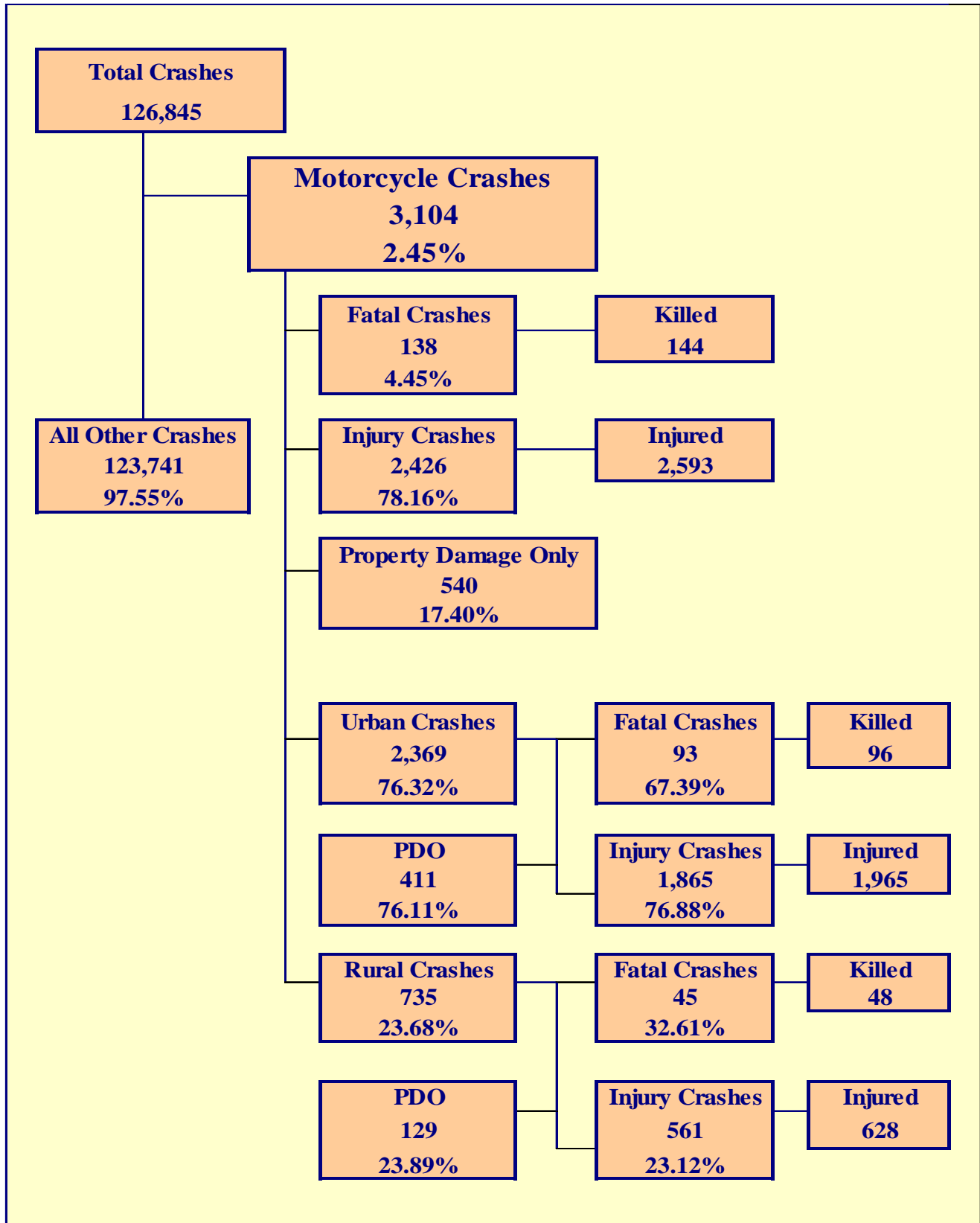
Section 7: – Pedestrian and Pedalcyclist Crashes

Table 7 – 14
Pedestrian Crashes by County

County	Number of Crashes				Number of Pedestrians	
	Total	Fatal	Injury	PDO	Killed	Injured
Apache	7	5	2	0	5	2
Cochise	10	2	8	0	2	9
Coconino	34	7	25	2	7	26
Gila	5	2	3	0	2	3
Graham	3	0	3	0	0	3
Greenlee	0	0	0	0	0	0
La Paz	2	2	0	0	2	1
Maricopa	1,209	137	1,030	42	137	1,074
Mohave	21	4	16	1	4	16
Navajo	12	4	7	1	4	7
Pima	261	23	235	3	23	241
Pinal	28	6	19	3	6	23
Santa Cruz	2	0	1	1	0	1
Yavapai	20	3	17	0	4	18
Yuma	23	1	22	0	1	24
TOTAL	1,637	196	1,388	53	197	1,448

Table 7 – 15
Pedalcyclist Crashes by County

County	Number of Crashes				Number of Pedalcyclists	
	Total	Fatal	Injury	PDO	Killed	Injured
Apache	0	0	0	0	0	0
Cochise	5	0	5	0	0	5
Coconino	35	0	31	4	0	31
Gila	5	0	5	0	0	5
Graham	2	0	2	0	0	2
Greenlee	0	0	0	0	0	0
La Paz	0	0	0	0	0	0
Maricopa	1,086	24	980	82	23	991
Mohave	21	0	18	3	0	19
Navajo	4	0	4	0	0	4
Pima	245	5	221	19	6	227
Pinal	25	2	21	2	2	21
Santa Cruz	0	0	0	0	0	0
Yavapai	14	0	12	2	0	12
Yuma	34	0	33	1	0	33
TOTAL	1,476	31	1,332	113	31	1,350



Section 8: – Motorcycle (MC) Crashes

Chart 8 – 1
MC Fatalities by Year

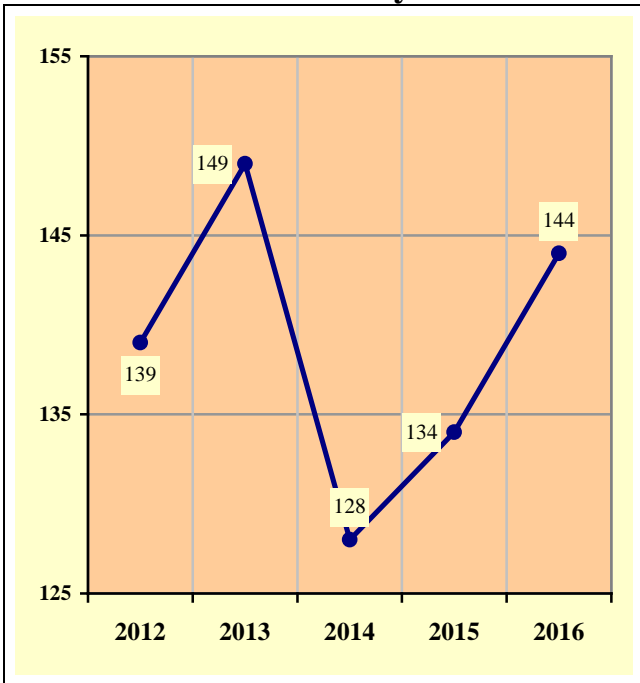
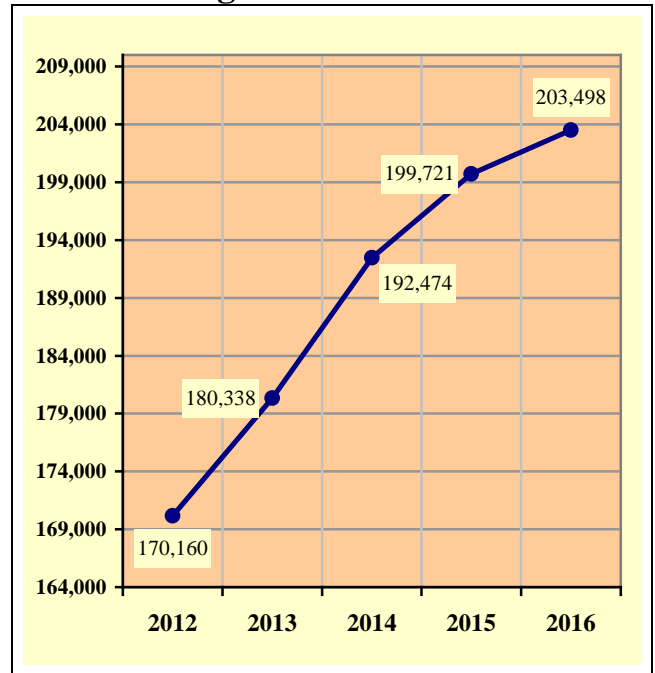


Chart 8 – 2
MC Registrations in Arizona



Total Point-in-Time of Registered Motorcycles at the end of
Calendar year 2016.
(Source: MVD - MV988 MV630419 Currently Registered Vehicles by County
Listing (motorcycle sub category), reports dated 12/31/16.)

Chart 8 – 3
Fatality Rate per Registered MC

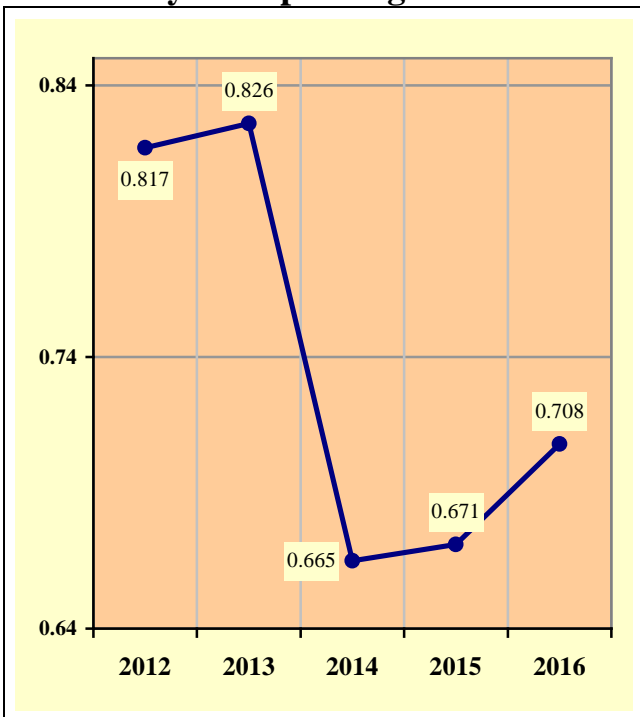
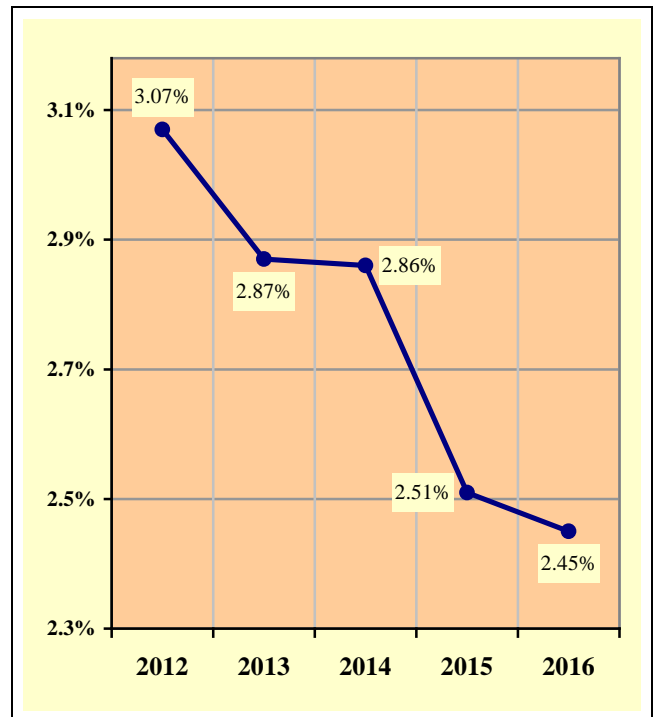


Chart 8 – 4
Percent of MC Crashes to All Crashes



Section 8: – Motorcycle (MC) Crashes

**Table 8 – 1
MC Crashes by First Harmful Event**

First Harmful Event Type	Number of Crashes			
	Total	Fatal	Injury	PDO
Collision with Motor Vehicle in Transport	1,778	85	1,312	381
Overturning	694	23	605	66
Collision with Pedestrian	19	0	19	0
Collision with Pedalcyclist	13	0	12	1
Collision with Animal	31	0	24	7
Collision with Fixed Object	308	28	255	25
Collision with Non-fixed Object*	76	2	45	29
Vehicle Fire or Explosion	2	0	1	1
Other Non-collision**	53	0	45	8
Unknown	130	0	108	22
TOTAL	3,104	138	2,426	540
*Includes Collision with Parked Vehicles, Trains, Railway Vehicles, and Work Zone Equipment				
**Includes Vehicle Immersion, Jackknife, and Cargo Loss or Shift				

**Table 8 – 2
Lighting Conditions in MC Crashes**

Type of Lighting Conditions	Number of Crashes			
	Total	Fatal	Injury	PDO
Daylight	2,098	73	1,652	373
Dawn	49	1	39	9
Dusk	114	9	84	21
Dark - Lighted	656	32	514	110
Dark - Not Lighted	163	11	129	23
Dark - Unknown Lighting	24	12	8	4
TOTAL	3,104	138	2,426	540

**Table 8 – 3
Road Surface Conditions in MC Crashes**

Type of Road Surface Condition	Number of Operators			
	Total	In Fatal Crashes	In Injury Crashes	In PDO Crashes
Dry	3,020	119	2,385	516
Wet	83	2	63	18
Snow	0	0	0	0
Slush	3	0	0	3
Ice/Frost	0	0	0	0
Water (standing or moving)	1	0	1	0
Sand	3	0	2	1
Mud, Dirt, Gravel	23	1	15	7
Oil	9	0	9	0
Other	4	0	3	1
Unknown	33	20	2	11
TOTAL	3,179	142	2,480	557

Section 8: – Motorcycle (MC) Crashes

Table 8 – 4

MC Crashes by Geographic Location

Category	Total	Urban	Percent of Total	Rural	Percent of Total
Total Crashes	3,104	2,369	76.32%	735	23.68%
Fatal Crashes	138	93	67.39%	45	32.61%
Injury Crashes	2,426	1,865	76.88%	561	23.12%
PDO Crashes	540	411	76.11%	129	23.89%
Persons Killed	144	96	66.67%	48	33.33%
Persons Injured	2,593	1,965	75.78%	628	24.22%

Table 8 – 5

Operator Involvement by Age in MC Crashes

Operator Age Group	Number of Operators							
	Total	Percent of Total	In Fatal Crashes	Percent of Fatal	In Injury Crashes	Percent of Injury	In PDO Crashes	Percent of PDO
15 & Under	9	0.28%	1	0.70%	8	0.32%	0	0.00%
16	13	0.41%	0	0.00%	12	0.48%	1	0.18%
17	14	0.44%	0	0.00%	11	0.44%	3	0.54%
18	40	1.26%	2	1.41%	30	1.21%	8	1.44%
19	78	2.45%	1	0.70%	62	2.50%	15	2.69%
20	97	3.05%	1	0.70%	75	3.02%	21	3.77%
21	95	2.99%	2	1.41%	80	3.23%	13	2.33%
22	117	3.68%	1	0.70%	100	4.03%	16	2.87%
23	89	2.80%	3	2.11%	73	2.94%	13	2.33%
24	101	3.18%	5	3.52%	81	3.27%	15	2.69%
25-34	706	22.21%	26	18.31%	570	22.98%	110	19.75%
35-44	486	15.29%	27	19.01%	382	15.40%	77	13.82%
45-54	557	17.52%	32	22.54%	440	17.74%	85	15.26%
55-64	458	14.41%	25	17.61%	358	14.44%	75	13.46%
65-74	192	6.04%	12	8.45%	150	6.05%	30	5.39%
75 & Older	30	0.94%	3	2.11%	21	0.85%	6	1.08%
Unknown	97	3.05%	1	0.70%	27	1.09%	69	12.39%
TOTAL	3,179	100.00%	142	100.00%	2,480	100.00%	557	100.00%

Table 8 – 6

MC Operator Physical Condition

Type of Condition	Number of Operators							
	Total	Percent of Total	In Fatal Crashes	Percent of Fatal	In Injury Crashes	Percent of Injury	In PDO Crashes	Percent of PDO
No Apparent Influence	2,691	84.65%	45	31.69%	2,163	87.22%	483	86.71%
Alcohol	181	5.69%	43	30.28%	131	5.28%	7	1.26%
Appeared to be Under the Influence of Drugs*	18	0.57%	12	8.45%	6	0.24%	0	0.00%
Medications	1	0.03%	0	0.00%	1	0.04%	0	0.00%
Illness	5	0.16%	0	0.00%	4	0.16%	1	0.18%
Physical Impairment	1	0.03%	0	0.00%	1	0.04%	0	0.00%
Fell Asleep or Fatigued	5	0.16%	0	0.00%	4	0.16%	1	0.18%
Other	21	0.66%	0	0.00%	11	0.44%	10	1.80%
Unknown	256	8.05%	42	29.58%	159	6.41%	55	9.87%
TOTAL	3,179	100.00%	142	100.00%	2,480	100.00%	557	100.00%

*Illegal drugs or narcotics

Section 8: – Motorcycle (MC) Crashes

Table 8 – 7
Helmet Use by Gender

Gender	Number of Operators and Passengers							
	Helmet Used	Percent of Helmet Used	Helmet Not Used	Percent of Helmet Not Used	Helmet Use Unknown	Percent of Unknown	Total	Percent of Total
Male	1,406	88.59%	705	86.40%	808	80.24%	2,919	85.60%
Female	179	11.28%	108	13.24%	134	13.31%	421	12.35%
Unknown	2	0.13%	3	0.37%	65	6.45%	70	2.05%
TOTAL	1,587	100.00%	816	100.00%	1,007	100.00%	3,410	100.00%

Table 8 – 8
MC Operator’s Helmet Use

Severity of Injury	Helmet Used	Percent of Total	Helmet Not Used	Percent of Total	Unknown	Percent of Total	Total	Percent of Total
No Injury	247	16.43%	88	11.76%	238	25.65%	573	18.02%
Unknown Injury	6	0.40%	5	0.67%	44	4.74%	55	1.73%
Possible Injury	253	16.83%	96	12.83%	164	17.67%	513	16.14%
Non-Incapacitating Injury	644	42.85%	305	40.78%	300	32.33%	1,249	39.29%
Incapacitating Injury	303	20.16%	184	24.60%	168	18.10%	655	20.60%
Fatal Injury	50	3.33%	70	9.36%	14	1.51%	134	4.22%
TOTALS	1,503	100.00%	748	100.00%	928	100.00%	3,179	100.00%

Table 8 – 9
MC Passenger’s Helmet Use

Severity of Injury	Helmet Used	Percent of Total	Helmet Not Used	Percent of Total	Unknown	Percent of Total	Total	Percent of Total
No Injury	14	16.67%	8	11.76%	18	22.78%	40	17.32%
Unknown Injury	0	0.00%	1	1.47%	4	5.06%	5	2.16%
Possible Injury	15	17.86%	8	11.76%	16	20.25%	39	16.88%
Non-Incapacitating Injury	40	47.62%	29	42.65%	27	34.18%	96	41.56%
Incapacitating Injury	13	15.48%	15	22.06%	13	16.46%	41	17.75%
Fatal Injury	2	2.38%	7	10.29%	1	1.27%	10	4.33%
TOTALS	84	100.00%	68	100.00%	79	100.00%	231	100.00%

Section 8: – Motorcycle (MC) Crashes

Table 8 – 10

MC Operators and Passengers Killed and Injured

Age of Victim	Persons Killed			Persons Injured			
	Total	Male	Female	Total	Male	Female	Gender Unknown
0-4	0	0	0	1	1	0	0
5-9	0	0	0	4	3	1	0
10-14	0	0	0	13	8	5	0
15-19	5	4	1	130	114	16	0
20-24	12	11	1	418	387	31	0
25-34	26	23	3	591	524	67	0
35-44	27	26	1	408	348	60	0
45-54	35	31	4	459	372	87	0
55-64	24	23	1	374	322	52	0
65-74	12	11	1	153	141	12	0
75 & Older	3	3	0	21	19	2	0
Unknown	0	0	0	21	15	3	3
TOTAL	144	132	12	2,593	2,254	336	3

Table 8 – 11

MC Operator Violations

Type of Violation or Behavior	Number of Operators							
	Total	Percent of Total	In Fatal Crashes	Percent of Fatal	In Injury Crashes	Percent of Injury	In PDO Crashes	Percent of PDO
No Improper Action	1,559	49.04%	40	28.17%	1,232	49.68%	287	51.53%
Speed too Fast for Conditions	753	23.69%	25	17.61%	608	24.52%	120	21.54%
Exceeded Lawful Speed	69	2.17%	9	6.34%	54	2.18%	6	1.08%
Failed to Yield Right-Of-Way	81	2.55%	5	3.52%	52	2.10%	24	4.31%
Followed Too Closely	79	2.49%	2	1.41%	55	2.22%	22	3.95%
Ran Stop Sign	19	0.60%	2	1.41%	16	0.65%	1	0.18%
Disregarded Traffic Signal	42	1.32%	4	2.82%	36	1.45%	2	0.36%
Made Improper Turn	29	0.91%	1	0.70%	19	0.77%	9	1.62%
Drove in Opposing Lane	22	0.69%	3	2.11%	17	0.69%	2	0.36%
Knowingly Operated with Faulty or Missing Equipment	11	0.35%	1	0.70%	8	0.32%	2	0.36%
Required Motorcycle Safety Equipment Not Used	9	0.28%	4	2.82%	4	0.16%	1	0.18%
Passed in No-Passing Zone	8	0.25%	0	0.00%	7	0.28%	1	0.18%
Unsafe Lane Change	49	1.54%	2	1.41%	39	1.57%	8	1.44%
Failed to Keep in Proper Lane	94	2.96%	13	9.15%	74	2.98%	7	1.26%
Disregarded Pavement Markings	6	0.19%	1	0.70%	4	0.16%	1	0.18%
Other Unsafe Passing	27	0.85%	0	0.00%	17	0.69%	10	1.80%
Other	96	3.02%	1	0.70%	80	3.23%	15	2.69%
Unknown	226	7.11%	29	20.42%	158	6.37%	39	7.00%
TOTAL	3,179	100.00%	142	100.00%	2,480	100.00%	557	100.00%

Section 8: – Motorcycle (MC) Crashes

Chart 8 – 5

All MC Crashes vs. Fatal MC Crashes by Time of Day - Weekdays

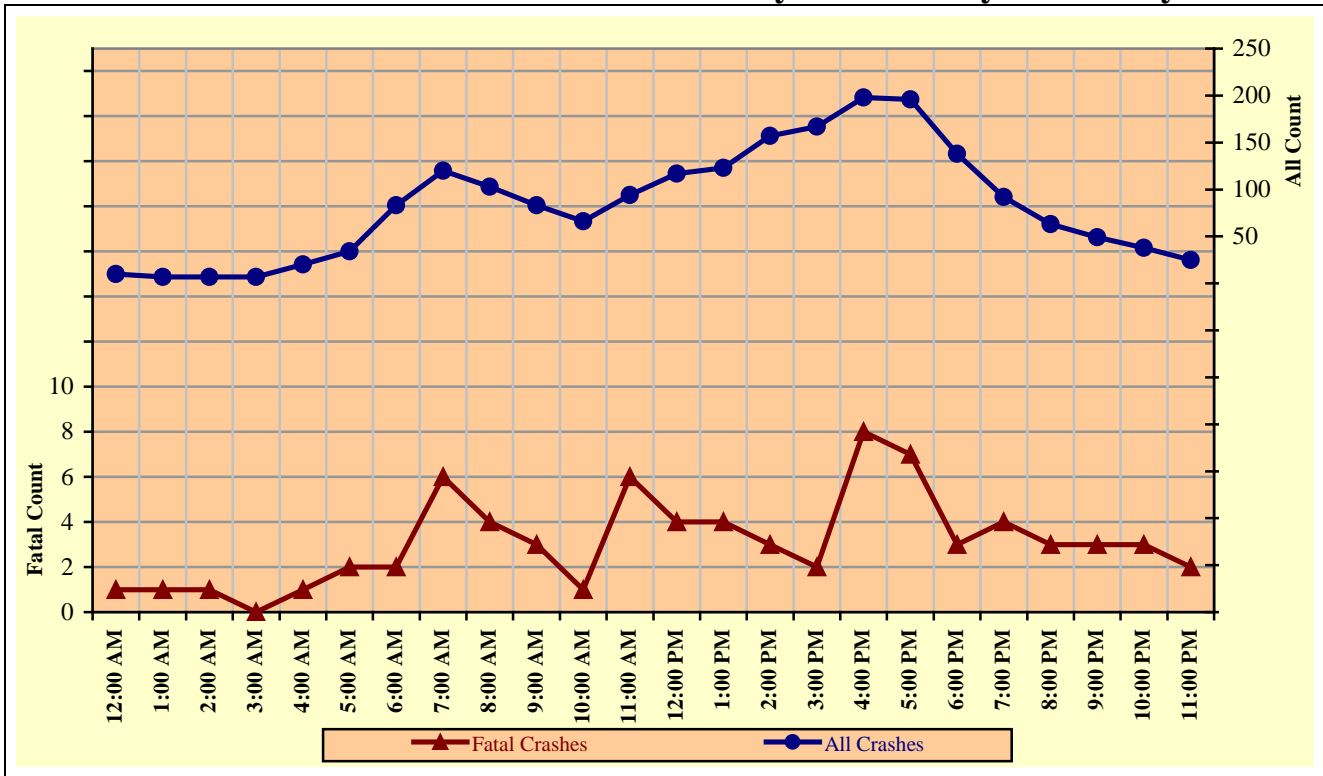
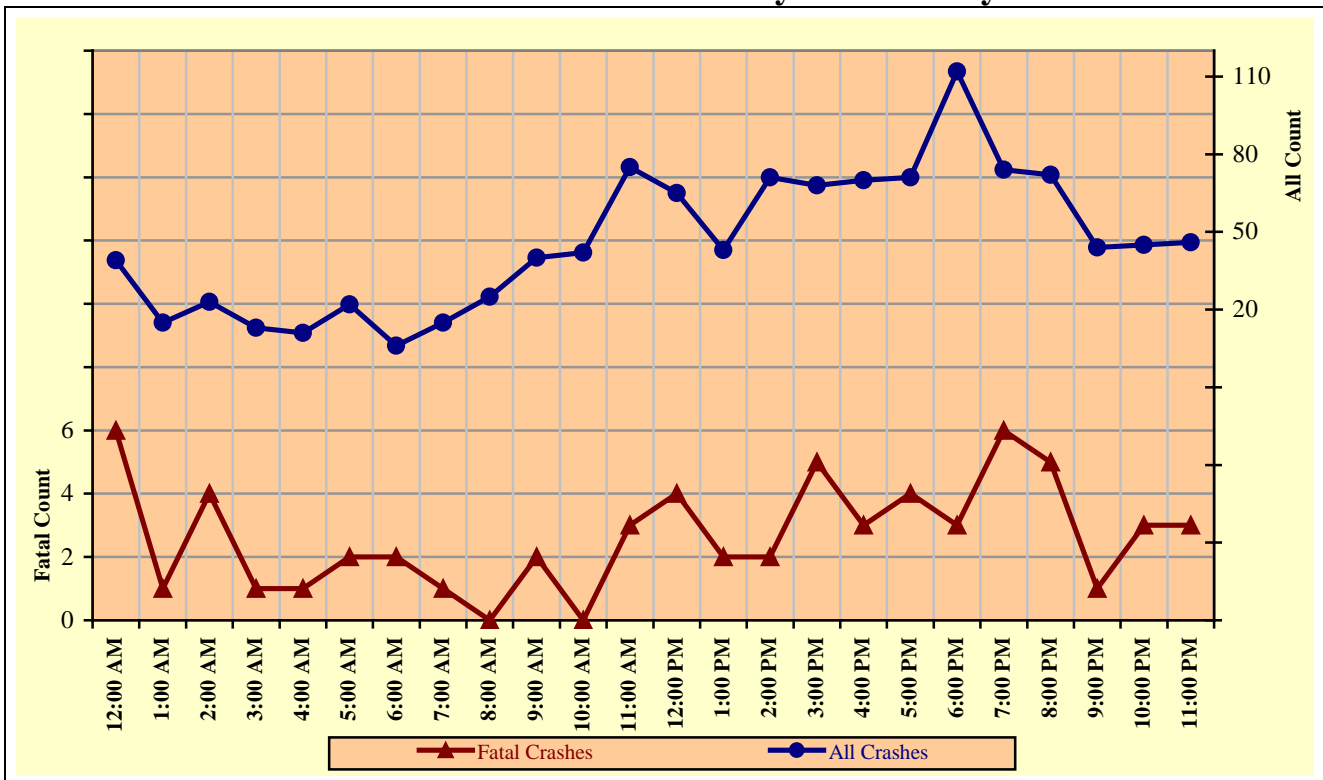


Chart 8 – 6

All MC Crashes vs. Fatal MC Crashes by Time of Day - Weekends



Section 8: – Motorcycle (MC) Crashes

Chart 8 – 7
All MC Crashes vs. Fatal MC Crashes by Day of Week

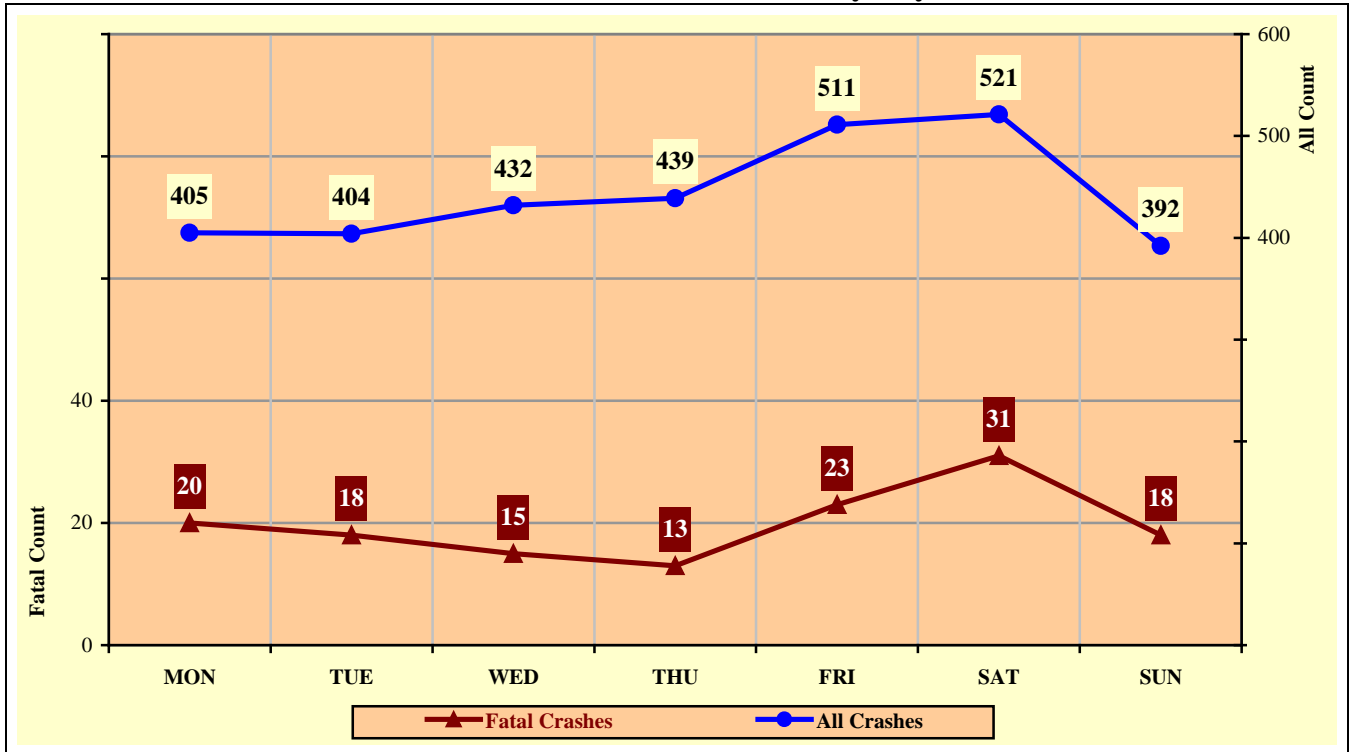
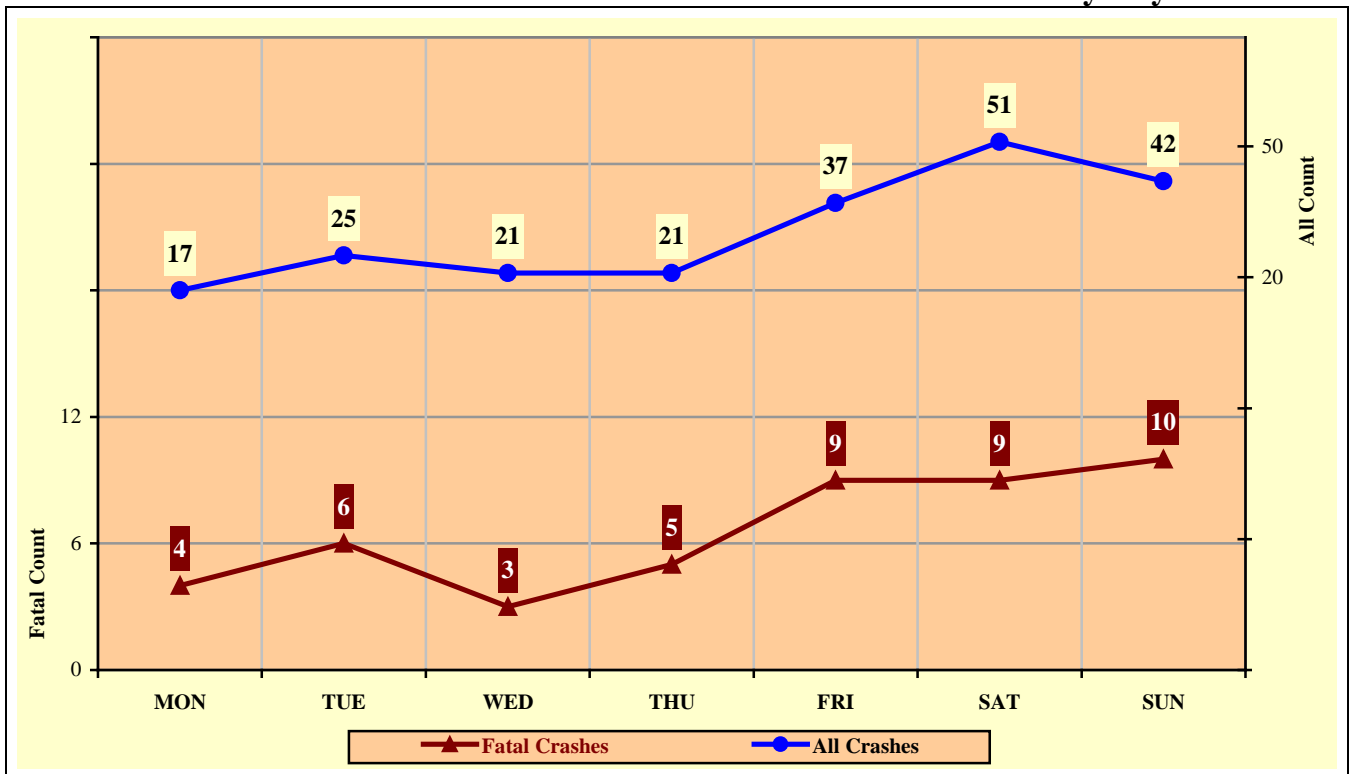


Chart 8 – 8
Alcohol Related MC Crashes vs. Fatal Alcohol Related MC Crashes by Day of Week



Section 8: – Motorcycle (MC) Crashes

Table 8 – 12
MC Crashes by Hour and Day of Week

Hour Beginning	Total Crashes		Monday		Tuesday		Wednesday		Thursday		Friday		Saturday		Sunday		Weekdays		Weekends	
	All	Fatal	All	Fatal	All	Fatal	All	Fatal	All	Fatal	All	Fatal	All	Fatal	All	Fatal	All	Fatal	All	Fatal
12:00 AM	49	7	4	0	2	1	5	0	1	0	2	0	17	3	18	3	10	1	39	6
1:00 AM	22	2	4	0	1	1	1	0	1	0	4	0	6	0	5	1	7	1	15	1
2:00 AM	30	5	3	1	1	0	1	0	2	0	3	1	8	3	12	0	7	1	23	4
3:00 AM	20	1	3	0	1	0	3	0	2	0	1	0	6	0	4	1	7	0	13	1
4:00 AM	31	2	4	0	6	0	4	0	6	0	4	1	3	1	4	0	20	1	11	1
5:00 AM	56	4	10	2	9	0	5	0	12	1	8	1	4	0	8	0	34	2	22	2
6:00 AM	89	4	13	1	15	0	13	1	25	0	17	0	5	2	1	0	83	2	6	2
7:00 AM	135	7	22	2	29	2	28	1	21	1	20	0	9	1	6	0	120	6	15	1
8:00 AM	128	4	18	2	20	1	21	1	25	0	19	0	20	0	5	0	103	4	25	0
9:00 AM	123	5	16	0	16	0	17	1	17	0	17	2	22	2	18	0	83	3	40	2
10:00 AM	108	1	13	0	13	0	11	1	11	0	18	0	26	0	16	0	66	1	42	0
11:00 AM	169	9	14	1	12	4	22	0	15	0	31	1	40	0	35	3	94	6	75	3
12:00 PM	182	8	25	3	22	0	24	0	19	0	27	1	42	4	23	0	117	4	65	4
1:00 PM	166	6	23	0	17	0	34	2	26	2	23	0	27	2	16	0	123	4	43	2
2:00 PM	228	5	31	1	31	0	28	2	27	0	40	0	33	1	38	1	157	3	71	2
3:00 PM	235	7	33	1	36	0	25	1	39	0	34	0	41	3	27	2	167	2	68	5
4:00 PM	268	11	34	2	39	2	53	0	38	3	34	1	45	2	25	1	198	8	70	3
5:00 PM	267	11	23	0	39	2	42	2	49	0	43	3	32	2	39	2	196	7	71	4
6:00 PM	250	6	41	0	29	1	38	1	30	1	46	2	38	0	28	1	138	3	112	3
7:00 PM	166	10	22	2	25	1	14	0	31	1	24	3	27	1	23	2	92	4	74	6
8:00 PM	135	8	18	0	15	1	15	1	15	1	33	3	25	2	14	0	63	3	72	5
9:00 PM	93	4	14	0	13	1	11	1	11	1	20	1	15	0	9	0	49	3	44	1
10:00 PM	83	6	14	2	8	1	7	0	9	0	20	1	12	1	13	1	38	3	45	3
11:00 PM	71	5	3	0	5	0	10	0	7	2	23	2	18	1	5	0	25	2	46	3
TOTAL	3,104	138	405	20	404	18	432	15	439	13	511	23	521	31	392	18	1,997	74	1,107	64

Crashes during Weekends accounted for 35.66% of all MC crashes and 46.38% of Fatal MC Crashes.

Crashes during Weekdays accounted for 64.34% of all MC crashes and 53.62% of Fatal MC Crashes.

Section 8: – Motorcycle (MC) Crashes

Table 8 – 13

MC Crashes by County

County	Number of Crashes				Number of Persons	
	Total	Fatal	Injury	PDO	Killed	Injured
Apache	6	0	5	1	0	5
Cochise	57	3	45	9	3	49
Coconino	75	1	48	26	1	63
Gila	34	4	27	3	5	33
Graham	5	1	4	0	1	5
Greenlee	8	0	7	1	0	9
La Paz	17	2	15	0	2	18
Maricopa	2,045	83	1,601	361	85	1,681
Mohave	110	9	80	21	10	90
Navajo	14	0	10	4	0	14
Pima	385	18	316	51	19	330
Pinal	145	8	113	24	8	130
Santa Cruz	11	0	11	0	0	11
Yavapai	133	6	99	28	7	107
Yuma	59	3	45	11	3	48
TOTAL	3,104	138	2,426	540	144	2,593

Table 8 – 14

Manner of Collision in MC Crashes

Manner of Collision Type	Number of Crashes							
	Total	Percent of All Crashes	Fatal	Percent of Fatal Crashes	Injury	Percent of Injury Crashes	PDO	Percent of PDO Crashes
Angle	324	16.27%	20	21.51%	268	18.22%	36	8.43%
Left Turn	495	24.86%	33	35.48%	387	26.31%	75	17.56%
Rear End	667	33.50%	14	15.05%	448	30.46%	205	48.01%
Head-On	39	1.96%	4	4.30%	30	2.04%	5	1.17%
Sideswipe (same)	279	14.01%	11	11.83%	197	13.39%	71	16.63%
Sideswipe (opposite)	32	1.61%	0	0.00%	28	1.90%	4	0.94%
Rear to Side	9	0.45%	0	0.00%	5	0.34%	4	0.94%
Rear to Rear	3	0.15%	0	0.00%	2	0.14%	1	0.23%
Other	126	6.33%	10	10.75%	95	6.46%	21	4.92%
Unknown	17	0.85%	1	1.08%	11	0.75%	5	1.17%
TOTAL	1,991	100.00%	93	100.00%	1,471	100.00%	427	100.00%

Note: Includes only multi-vehicle MC crashes

Acknowledgements

Special gratitude to our other providers of data and information including:

The Information Technology Group, Arizona Department of Transportation

Motor Vehicle Division, Arizona Department of Transportation

Multimodal Planning Division, Arizona Department of Transportation

The Federal Highway Administration, U.S. Department of Transportation

National Highway Transportation Safety Administration