

ARIZONA

MOTOR VEHICLE CRASH FACTS

2013



2013 Motor Vehicle Crash Facts for the State of Arizona

Prepared by:
The Arizona Department of Transportation
Intermodal Transportation Division

Publication Date: June 4, 2014



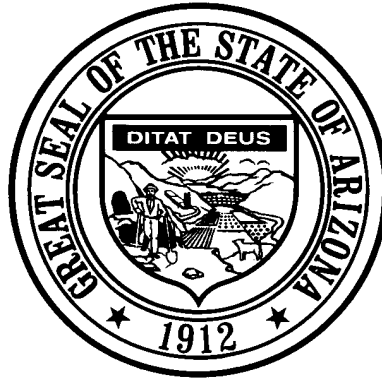
This publication is an annual statistical review of the motor vehicle crashes in the State of Arizona for the calendar year 2013. The results are compiled from Arizona Traffic Accident Reports submitted to the Arizona Department of Transportation by state, county, city, tribal, and other law enforcement agencies. Specific inquiries regarding the data in this report should be directed to:

The Arizona Department of Transportation
Intermodal Transportation Division
Traffic Records Section
206 S. 17th Ave. MD 064R
Phoenix, AZ 85007-3213

E-mail: azcrashfacts@azdot.gov

In order to provide the most current information, preliminary data is utilized when necessary. For this reason, previous or future reports may differ slightly and we encourage you to refer to the latest issue of Motor Vehicle Crash Facts.

This issue as well as previous issues of this publication may be viewed and downloaded from ADOT's Web Site at:
<http://www.azdot.gov/mvd/Statistics/arizona-motor-vehicle-crash-facts>



Janice K. Brewer
Governor

Arizona Department of Transportation

John S. Halikowski
Director

State Transportation Board

Stephen W. Christy – District 2
Chairman

Kelly O. Anderson – District 4
Vice Chairman

Members

Joseph E. La Rue – District 1

Jack Sellers – District 1

William F. Cuthbertson – District 3

Hank Rogers – District 5

Deanna L. Beaver – District 6

OVERVIEW

Section 1: – Highlights and Historical Trends 1

Section 2: – Geographic Location..... 9

Section 3: – Crash Descriptions 17

Section 4: – Safety Devices 23

Section 5: – Motor Vehicle and Driver Descriptions 26

Section 6: – Alcohol Related Crashes..... 32

Section 7: – Pedestrian and Pedalcyclist Crashes 41

Section 8: – Motorcycle (MC) Crashes 47

Acknowledgements 57

2013 Arizona Crash Facts Summary

Table of Contents

Section 1: Highlights and Historical Trends	1
Arizona Crash Facts Summary and Comparison.....	2
Arizona at a Glance – 2013.....	2
Licensed Drivers, Motor Vehicle Registration and Crash History in Arizona.....	3
Historical Trends – Arizona and the United States	3
Statewide Economic Loss Due to Motor Vehicle Crashes.....	4
Average Economic Cost per Incident.....	4
Traffic Crashes in Arizona by Year.....	5
Victims of Motor Vehicle Crashes.....	6
Arizona’s 2013 Estimated Population.....	6
Victims of Motor Vehicle Crashes (Arizona Residents Only).....	6
Vehicle Miles Traveled.....	7
Arizona vs. U.S. Fatality Rate.....	7
Traffic Fatalities by Geographic Region.....	7
Traffic Injuries by Geographic Region.....	7
Holiday Crash Statistics.....	8
Section 2: Geographic Location	9
Crash Severity by First Harmful Event Statewide.....	10
Crashes by County.....	10
Crash Severity by First Harmful Event in Urban Areas.....	11
Crash Severity by First Harmful Event in Rural Areas.....	11
Analysis by Jurisdiction.....	12
Total Fatalities by County for 2012 and 2013.....	15
Urban and Rural Crashes by Day of Week.....	16
Urban and Rural Fatal Crashes by Day of Week.....	16
All Urban and Rural Crashes vs. Urban and Rural Fatal Crashes by Month.....	16
Section 3: Crash Descriptions	17
Manner of Collision in Multi-Vehicle Crashes.....	18
Lighting Conditions.....	18
Weather Conditions.....	18
Road Surface Conditions.....	19
Roadway Grade.....	19
Roadway Alignment.....	19
All Crashes vs. Fatal Crashes by Time of Day - Weekdays.....	20
All Crashes vs. Fatal Crashes by Time of Day - Weekends.....	20
Crashes by Day of Week.....	21
Fatal Crashes by Day of Week.....	21
All Crashes vs. Fatal Crashes by Month.....	21
Crashes by Hour and Day of Week.....	22
Section 4: Safety Devices	23
Child Safety Device Usage (less than five years old).....	24
Driver Safety Device Usage.....	24
Passenger Safety Device Usage.....	24
Driver Safety Device Usage by Gender.....	25
Driver Safety Device Usage by Age.....	25
Section 5: Motor Vehicle and Driver Descriptions	26
Arizona Motor Vehicle Registrations.....	27
Motor Vehicle Crash Involvement by Vehicle Type.....	27
Hit and Run Drivers Involved in Crashes.....	28
Gender of Drivers Involved in Crashes.....	28

2013 Arizona Crash Facts Summary

License Status of Drivers Involved in Crashes.....	28
Passengers Killed and Injured by Age and Gender.....	28
Drivers and Passengers Killed and Injured by Vehicle Type.....	29
Drivers Killed and Injured by Age and Gender.....	29
Licensed Drivers in Arizona by Age.....	30
Driver Involvement by Age.....	30
Driver Violations.....	31
Driver Physical Condition.....	31
Section 6: Alcohol Related Crashes.....	32
Economic Loss Due to Alcohol Related Crashes in Arizona for 2013.....	33
Alcohol Related Crash History.....	33
Manner of Collision in Alcohol Related Crashes.....	33
Alcohol Related Crashes by First Harmful Event.....	34
Alcohol Related Crashes by Vehicle Type.....	34
Lighting Conditions in Alcohol Related Crashes.....	35
Road Surface Conditions in Alcohol Related Crashes.....	35
Gender of Drivers Involved in Alcohol Related Crashes.....	35
Driver Involvement by Age in Alcohol Related Crashes.....	36
When Alcohol Related Crashes Occurred in 2013.....	36
Safety Device Usage for Drinking Drivers.....	36
Persons Killed and Injured in Alcohol Related Crashes.....	37
Alcohol Related Crashes by County.....	37
All Alcohol Related Crashes vs. Fatal Alcohol Related Crashes by Day of Week.....	38
All Alcohol Related Crashes vs. Fatal Alcohol Related Crashes by Month.....	38
All Alcohol Related Crashes vs. Fatal Alcohol Related Crashes - Weekdays.....	39
All Alcohol Related Crashes vs. Fatal Alcohol Related Crashes - Weekends.....	39
Alcohol Related Crashes by Hour and Day of Week.....	40
Section 7: Pedestrian and Pedalcyclist Crashes.....	41
Pedestrians Killed and Injured By Age and Gender.....	42
Pedestrian Crashes by Geographic Location.....	42
Pedestrian Crash History.....	42
Pedestrians Killed by Age and Action.....	43
Pedestrians Injured by Age and Action.....	43
Pedestrian Physical Condition in Motor Vehicle Crashes.....	43
Lighting Conditions in Pedestrian Crashes.....	44
Weather Conditions in Pedestrian Crashes.....	44
Pedalcyclists Killed and Injured by Age and Gender.....	44
Pedalcycle Crashes by Geographic Location.....	45
Pedalcycle Crash History.....	45
Lighting Conditions in Pedalcyclist Crashes.....	45
Weather Conditions in Pedalcyclist Crashes.....	45
Pedestrian Crashes by County.....	46
Pedalcyclist Crashes by County.....	46
Section 8: Motorcycle (MC) Crashes.....	47
MC Fatalities by Year.....	48
MC Registrations in Arizona.....	48
Fatality Rate per Registered MC.....	48
Percent of MC Crashes to All Crashes.....	48
MC Crashes by First Harmful Event.....	49
Lighting Conditions in MC Crashes.....	49
Road Surface Conditions in MC Crashes.....	49
MC Crashes by Geographic Location.....	50
Operator Involvement by Age in MC Crashes.....	50
MC Operator Physical Condition.....	50
MC Operators Involved in Fatal Crashes by License Status.....	51

2013 Arizona Crash Facts Summary

MC Operator's Helmet Use.....	51
MC Passenger's Helmet Use.....	51
MC Operators and Passengers Killed and Injured.....	52
MC Operator Violations.....	52
All MC Crashes vs. Fatal MC Crashes by Time of Day - Weekdays.....	53
All MC Crashes vs. Fatal MC Crashes by Time of Day - Weekends.....	53
All MC Crashes vs. Fatal MC Crashes by Day of Week.....	54
Alcohol Related MC Crashes vs. Fatal Alcohol Related MC Crashes by Day of Week.....	54
MC Crashes by Hour and Day of Week.....	55
MC Crashes by County.....	56
Manner of Collision in MC Crashes.....	56
Acknowledgements.....	57

2013 Arizona Crash Facts Summary

BREAKDOWN OF ALL CRASHES IN ARIZONA

TOTAL	107,348
FATAL	777
INJURY	34,047
PROPERTY DAMAGE ONLY	72,524
URBAN	87,084
RURAL	20,264
ALCOHOL RELATED	5,190
PEDESTRIAN	1,596
PEDALCYCLE	2,039
MOTORCYCLE	3,081
SINGLE VEHICLE	19,053
MULTI-VEHICLE	88,295

BREAKDOWN OF FATAL CRASHES IN ARIZONA

TOTAL	777
ALCOHOL RELATED	245
URBAN	420
RURAL	357
SINGLE VEHICLE	305
MULTI-VEHICLE	472
ALCOHOL RELATED SINGLE VEHICLE	104
ALCOHOL RELATED MULTI-VEHICLE	141

BREAKDOWN OF PERSONS KILLED AND INJURED

TYPE	KILLED	INJURED
IN ALL CRASHES	844	50,284
IN ALCOHOL RELATED CRASHES	262	3,480
IN URBAN CRASHES	443	40,843
IN RURAL CRASHES	401	9,441
SPEED RELATED*	266	19,015
USING SAFETY DEVICE	243	39,888
NOT USING SAFETY DEVICE	299	3,502
DRIVERS AGE 24 OR YOUNGER	92	7,718
DRINKING DRIVERS AGE 24 OR YOUNGER	26	436

BREAKDOWN OF CRASHES BY TIME

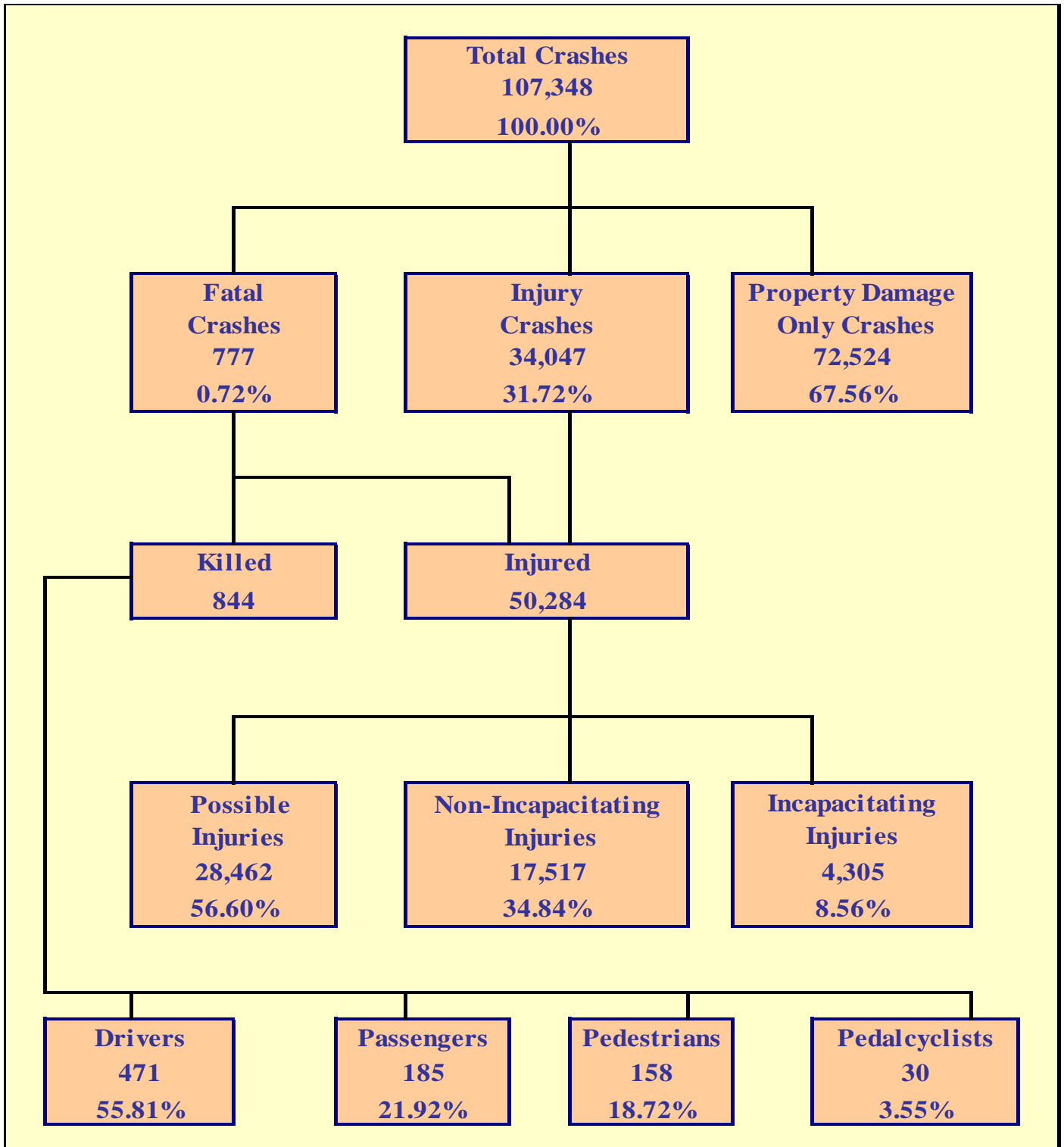
PEAK MONTH FOR ALL CRASHES	OCTOBER
PEAK DAY FOR ALL CRASHES	FRIDAY
PEAK HOUR FOR ALL CRASHES	5 PM - 6 PM
PEAK MONTH FOR FATAL CRASHES	MAY
PEAK DAY FOR FATAL CRASHES	SATURDAY
PEAK DATE FOR ALL CRASHES IN 2013	NOVEMBER 22ND (737 CRASHES)
PEAK DATE FOR FATAL CRASHES IN 2013	FEBRUARY 2ND AND MARCH 31ST (8 CRASHES)
PEAK HOUR FOR ALCOHOL RELATED CRASHES	2 AM - 3 AM
PEAK DAY FOR MOTORCYCLE CRASHES	SATURDAY
PEAK HOUR FOR FATAL MOTORCYCLE CRASHES	5 PM - 6 PM

OTHER FACTS

MOST COMMON MANNER OF COLLISION	REAR END
MOST COMMON DRIVER VIOLATION	SPEED TOO FAST FOR CONDITIONS

*Note: These numbers represent the total number of fatalities and injuries in crashes where the violation "speed too fast for conditions" or "exceeded lawful speed" was marked on the crash form

THIS PAGE LEFT BLANK FOR PRINTING PURPOSES



Section 1: – Highlights and Historical Trends

Table 1 – 1

Arizona Crash Facts Summary and Comparison

Category	2012	2013	Percent Change
Total Crashes	103,909	107,348	3.31%
Total Fatalities	821	844	2.80%
Total Injuries	50,051	50,284	0.47%
Alcohol Related Fatalities	283	262	-7.42%
Alcohol Related Injuries	3,755	3,480	-7.32%
Urban Fatalities	394	443	12.44%
Urban Injuries	40,379	40,843	1.15%
Rural Fatalities	427	401	-6.09%
Rural Injuries	9,672	9,441	-2.39%
MC Operator and Passenger Fatalities	139	149	7.19%
MC Operator and Passenger Injuries	2,741	2,653	-3.21%
Pedestrians Fatalities	131	158	20.61%
Pedestrians Injuries	1,361	1,356	-0.37%
Pedalcyclist Fatalities	18	30	66.67%
Pedalcyclist Injuries	1,766	1,679	-4.93%
Millions of vehicle miles traveled (VMT)	60,129	60,586	0.76%
Fatalities per 100 million VMT	1.37	1.39	2.03%
Injuries per 100 million VMT	83.24	83.00	-0.29%

Arizona at a Glance – 2013

- Approximately **2.31** persons were killed each day.
- One person was killed every **10.39** hours.
- There were **137.67** persons injured every day.
- One person was injured every **10.46** minutes.
- Alcohol Related crashes accounted for **4.83%** of all crashes and **31.53%** of all fatal crashes.
- Of all alcohol related crashes, **78.67%** occurred in Urban areas and **21.33%** occurred in Rural areas, while **59.59%** of all alcohol related fatal crashes occurred in Urban areas and **40.41%** occurred in Rural areas.
- Single vehicle crashes accounted for **17.75%** of all crashes and **39.25%** of all fatal crashes.
- Of all Pedestrian crashes, **9.90%** were fatal while **1.47%** of Pedalcycle crashes were fatal.
- Crashes which occurred during daylight hours (6:00 a.m. to 6:00 p.m.) accounted for **72.9%** of all crashes.
- Motor vehicle crashes resulted in **\$2.993** billion in economic losses to Arizona.
- Children age 14 and younger accounted for **48** fatalities and **3,386** injuries in motor vehicle crashes.

Section 1: – Highlights and Historical Trends

The Nation In 2013

The population of the United States was estimated at **317,292,487** (source: www.census.gov).

An estimated **32,719** persons were killed in motor vehicle crashes in the United States.

An estimated **2,313,000** persons were injured in motor vehicle crashes in the United States.

Source for this data: www.nhtsa.gov.

**Table 1 – 2
Licensed Drivers, Motor Vehicle Registration
and Crash History in Arizona**

Calendar Year	Total Crashes	Fatal Crashes	Injury Crashes	Property Damage Only Crashes	Total Persons Killed	Total Persons Injured	Total Licensed Drivers	Total Registered Vehicles
2009	107,149	709	33,506	72,934	806	50,809	4,434,719	4,787,350
2010	106,895	695	33,416	72,784	759	50,459	4,537,653	4,805,904
2011	103,945	756	33,220	69,969	827	49,849	4,634,405	4,855,014
2012	103,909	738	33,576	69,595	821	50,051	4,736,517	4,969,620
2013	107,348	777	34,047	72,524	844	50,284	4,826,903	5,130,780

**Table 1 – 3
Historical Trends – Arizona and the United States**

Calendar Year	U.S. Fatality Rate*	Arizona Fatality Rate	Arizona Traffic Fatalities	Estimated Motor Vehicle Miles Traveled	Arizona Fatal Crash Rate
2009	1.15	1.34	806	59,978	1.18
2010	1.11	1.27	759	59,906	1.16
2011	1.10	1.39	827	59,575	1.27
2012	1.14	1.37	821	60,129	1.23
2013	1.10	1.39	844	60,586	1.28

Vehicle miles traveled are shown in million miles and rates per 100 million miles

*Source for U.S. Fatality Rate: www.nhtsa.gov

Section 1: – Highlights and Historical Trends

Statewide Economic Loss Due to Motor Vehicle Crashes

Fatalities	\$1,213,840,800
Incapacitating Injuries	\$319,232,970
Non-Incapacitating Injuries	\$418,095,756
Possible Injuries	\$383,212,368
Property Damage Only	\$658,372,872
TOTAL	\$2,992,754,766

Table 1 – 4

Estimated Economic Loss by County

County	Cost of Traffic Crashes			
	Fatalities	Injuries	PDO	Total
Apache	\$ 35,955,000	\$ 5,433,234	\$ 1,960,848	\$ 43,349,082
Cochise	\$ 28,764,000	\$ 13,953,906	\$ 9,286,794	\$ 52,004,700
Coconino	\$ 57,528,000	\$ 30,731,478	\$ 24,056,700	\$ 112,316,178
Gila	\$ 31,640,400	\$ 8,299,536	\$ 5,092,758	\$ 45,032,694
Graham	\$ 2,876,400	\$ 2,986,356	\$ 1,951,770	\$ 7,814,526
Greenlee	\$ 8,629,200	\$ 1,636,998	\$ 699,006	\$ 10,965,204
La Paz	\$ 18,696,600	\$ 5,026,764	\$ 1,851,912	\$ 25,575,276
Maricopa	\$ 572,403,600	\$ 749,012,010	\$ 473,009,190	\$ 1,794,424,800
Mohave	\$ 79,101,000	\$ 36,765,696	\$ 17,193,732	\$ 133,060,428
Navajo	\$ 50,337,000	\$ 13,036,416	\$ 6,418,146	\$ 69,791,562
Pima	\$ 136,629,000	\$ 142,206,768	\$ 55,285,020	\$ 334,120,788
Pinal	\$ 86,292,000	\$ 45,781,068	\$ 23,021,808	\$ 155,094,876
Santa Cruz	\$ 11,505,600	\$ 3,084,786	\$ 3,821,838	\$ 18,412,224
Yavapai	\$ 57,528,000	\$ 36,299,964	\$ 20,389,188	\$ 114,217,152
Yuma	\$ 35,955,000	\$ 26,286,114	\$ 14,334,162	\$ 76,575,276
TOTALS	\$ 1,213,840,800	\$ 1,120,541,094	\$ 658,372,872	\$ 2,992,754,766

NOTE: Cost estimates are based on a 2% increase of the 2012 National Safety Council estimates of the average cost of motor vehicle crashes, deaths, and injuries. These costs are an estimate of wage and productivity losses, medical expenses, administrative expenses, motor vehicle damage, and employer costs. A description of the National Safety Council's current cost estimating procedures may be found in the Technical Appendix of *Injury Facts*® (source: www.nsc.org/news_resources/injury_and_death_statistics).

Table 1 – 5

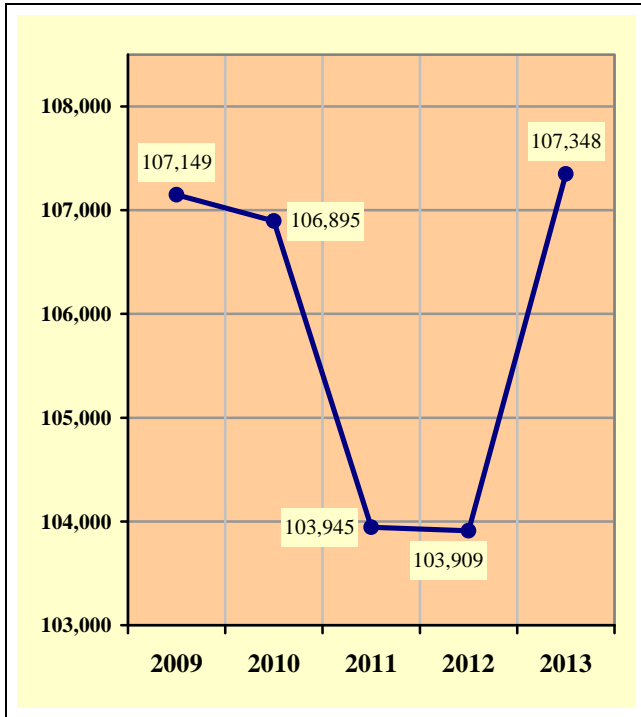
Average Economic Cost per Incident

1.	Fatality	\$1,438,200
2.	Incapacitating Injury	\$74,154
3.	Non-Incapacitating Injury	\$23,868
4.	Possible Injury	\$13,464
5.	Property Damage Only	\$9,078

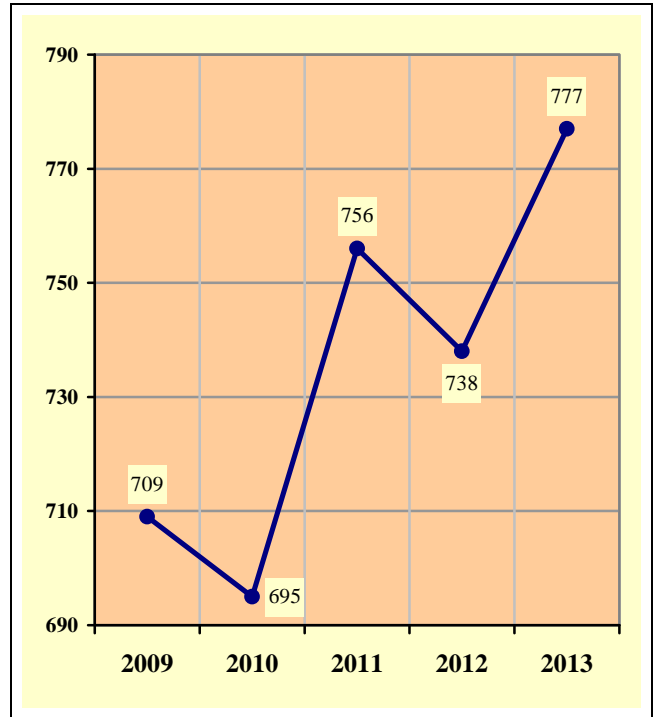
Section 1: – Highlights and Historical Trends

Traffic Crashes in Arizona by Year

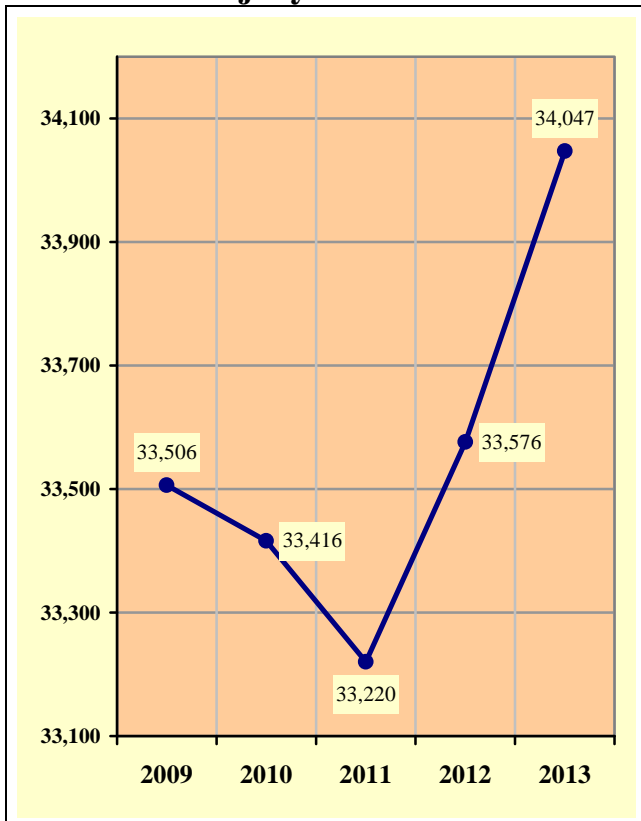
**Chart 1 – 1
Total Crashes**



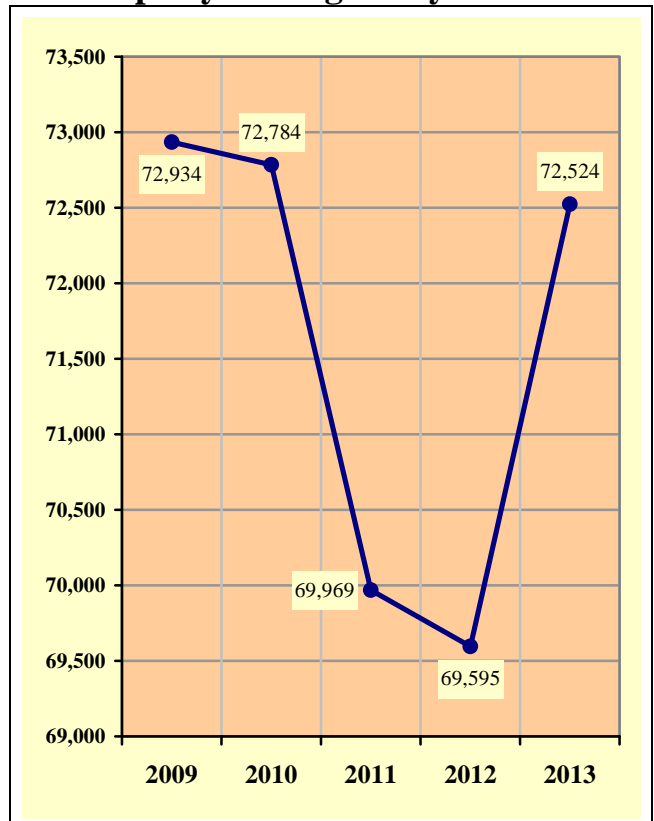
**Chart 1 – 2
Fatal Crashes**



**Chart 1 – 3
Injury Crashes**



**Chart 1 – 4
Property Damage Only Crashes**



Section 1: – Highlights and Historical Trends

Table 1 – 6
Victims of Motor Vehicle Crashes

Age of Victim	Persons Killed			Persons Injured			
	Total	Male	Female	Total	Male	Female	Gender Unknown
0-4	14	7	7	803	411	392	0
5-9	16	9	7	1,161	573	588	0
10-14	18	11	7	1,422	688	734	0
15-19	59	41	18	5,102	2,432	2,670	0
20-24	88	67	21	6,714	3,272	3,442	0
25-34	141	102	39	9,727	4,672	5,055	0
35-44	95	62	33	7,552	3,623	3,929	0
45-54	126	97	29	6,960	3,358	3,602	0
55-64	127	90	37	5,256	2,543	2,713	0
65-74	80	57	23	2,986	1,374	1,612	0
75 & Older	78	49	29	1,841	818	1,023	0
Unknown	2	2	0	760	338	330	92
TOTAL	844	594	250	50,284	24,102	26,090	92

Table 1 – 7
Arizona’s 2013 Estimated Population

Race/Ethnic group	Population Percentage	Traffic Crash Fatality Percentage	Population Estimate*
White non-Hispanic	58.38%	55.48%	3,842,190
Hispanic or Latino	29.80%	26.63%	1,961,135
Black or African American	4.09%	**	269,384
American Indian or Alaska Native	4.70%	12.27%	309,035
Asian or Pacific Islander	3.03%	**	199,310
Ethnicity Unknown	N/A	N/A	N/A
TOTAL	100.00%	**	6,581,054

Source: Arizona Department of Health Services, Health Status and Vital Statistics Section.
 *Population estimates for 2013 are available at www.azdhs.gov/plan/menu/info/pop/index.php
 **Data not released by Arizona Department of Health Services, Health Status and Vital Statistics Section

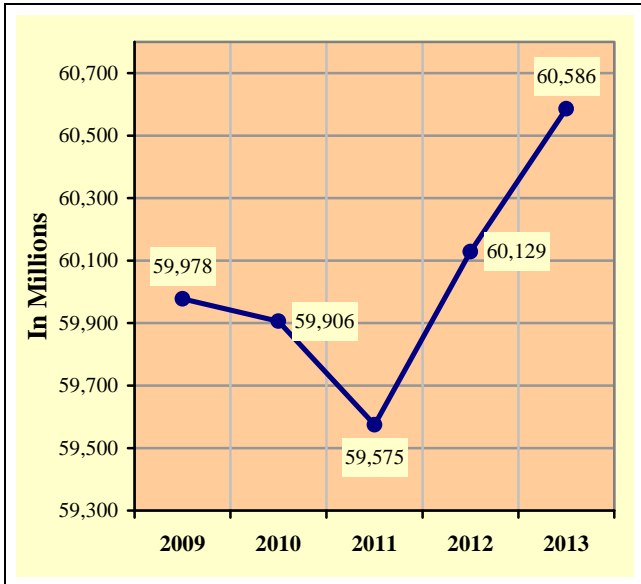
Table 1 – 8
Victims of Motor Vehicle Crashes (Arizona Residents Only)*

Age of Victim	Total Killed	Male	Female	Detail Breakdown:					
				White non-Hispanic	Hispanic or Latino	Black or African American	American Indian or Alaska Native	Asian or Pacific Islander	Ethnicity Unknown
1-14	45	29	16	15	14	6	10	0	0
15-19	51	37	14	24	16	**	8	**	0
20-44	288	208	80	120	99	16	50	3	0
45-64	248	181	67	163	60	6	18	1	0
65 & Older	134	86	48	103	15	**	8	**	0
TOTAL	766	541	225	425	204	**	94	**	0

Source: Arizona Department of Health Services, Health Status and Vital Statistics Section (www.azdhs.gov/plan/report/ahs/ahs2013).
 *Includes victims of crashes occurring outside Arizona.
 **Data not released by Arizona Department of Health Services, Health Status and Vital Statistics Section

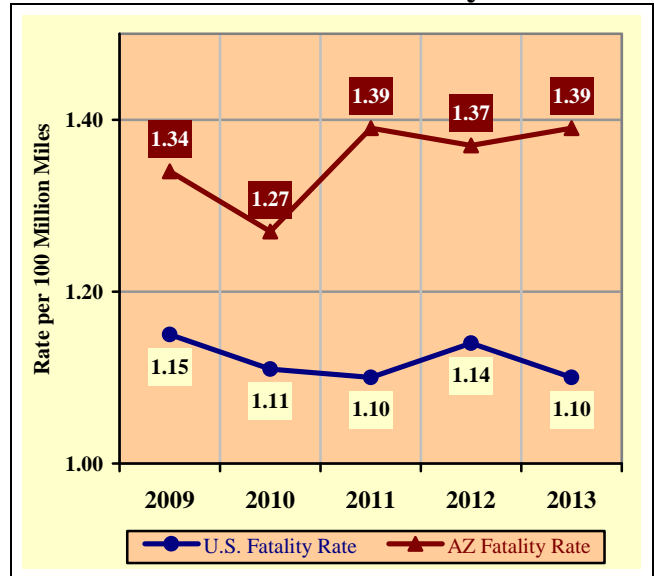
Section 1: – Highlights and Historical Trends

Chart 1 – 5
Vehicle Miles Traveled



Source: ADOT – Multimodal Planning Division – Data Bureau

Chart 1 – 6
Arizona vs. U.S. Fatality Rate



Source for U.S. Fatality Rate: www.nhtsa.gov

Chart 1 – 7
Traffic Fatalities by Geographic Region

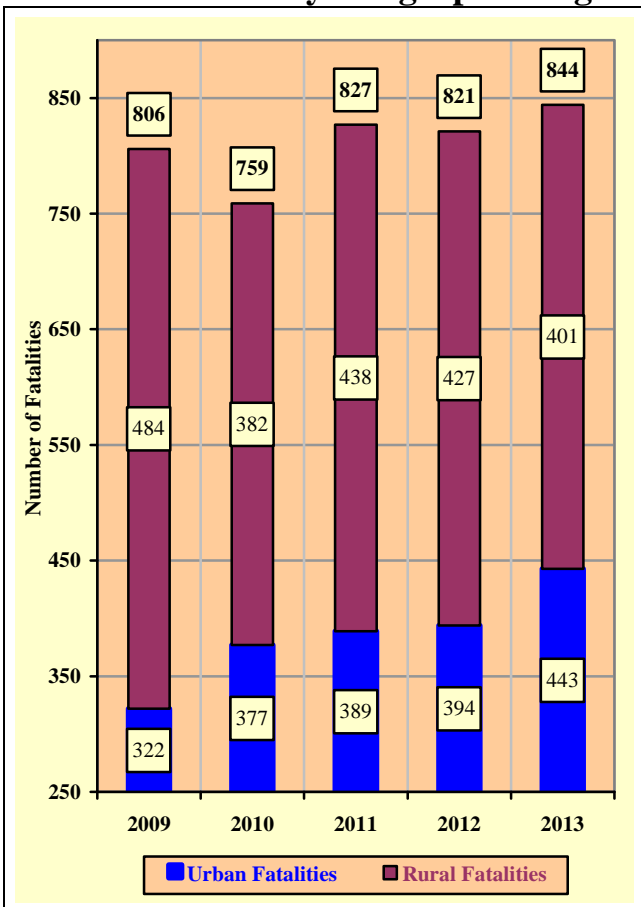
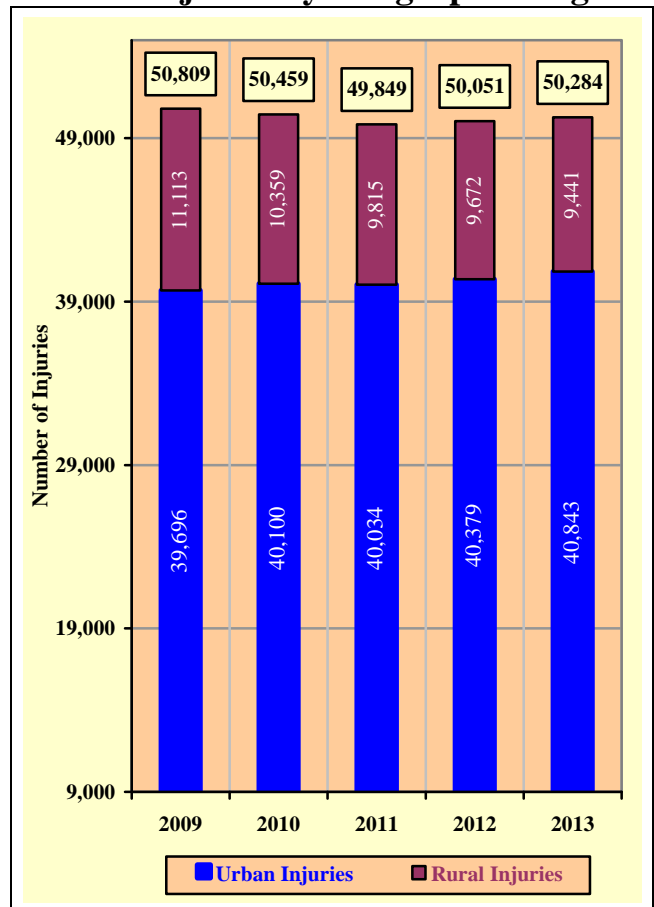


Chart 1 – 8
Traffic Injuries by Geographic Region



Section 1: – Highlights and Historical Trends

Table 1 – 9

Holiday Crash Statistics

Holidays such as Memorial Day, Labor Day, and Thanksgiving are regarded as three or four day weekend holidays for statistical purposes. Holidays such as Christmas, New Year’s Day, and the Fourth of July are celebrated on specific dates; which make the holiday period range from two to five days in length.

Holiday fatality statistics are based on fatal crashes occurring from 6:00 p.m. on the last working day prior to the holiday through 5:59 a.m. the day following the holiday period. Example: Thanksgiving fatalities are counted from Wednesday evening at 6:00 p.m. through 5:59 a.m. of the following Monday.

2013 Holidays	Beginning at 6:00 p.m.	Ending at 5:59 a.m.	Number of Days	Fatal Crashes	Persons Killed	Alcohol Related Fatal Crashes	Alcohol Related Fatalities
New Year’s Day	Friday	Wednesday	5	3	4	1	2
	12/28/2012	1/2/2013					
Memorial Day	Friday	Tuesday	4	9	10	4	4
	5/24/2013	5/28/2013					
July 4th	Wednesday	Monday	5	15	16	4	4
	7/3/2013	7/8/2013					
Labor Day	Friday	Tuesday	4	8	8	5	5
	8/30/2013	9/3/2013					
Thanksgiving Day	Wednesday	Monday	5	10	13	3	3
	11/27/2013	12/2/2013					
Christmas Day	Tuesday	Thursday	2	1	1	0	0
	12/24/2013	12/26/2013					

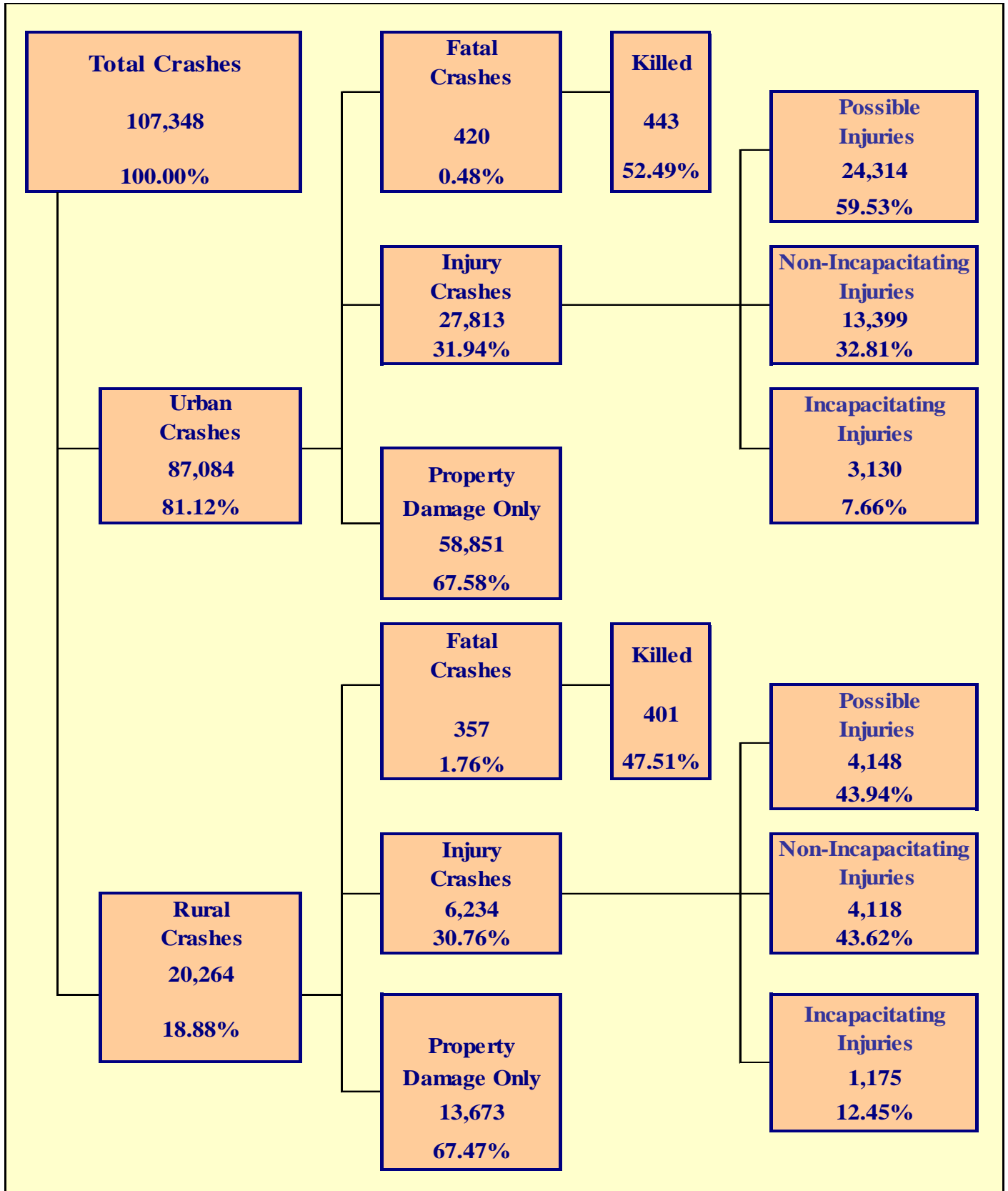
Fatal Crashes by Year	New Year’s Day	Memorial Day	July 4th	Labor Day	Thanksgiving	Christmas Day	Total
2009	10	6	7	5	11	7	46
2010	9	8	14	9	11	9	60
2011	5	8	9	7	12	6	47
2012	14	7	5	15	11	4	56
2013	3	9	15	8	10	1	46

Persons Killed	New Year’s Day	Memorial Day	July 4th	Labor Day	Thanksgiving	Christmas Day	Total
2009	11	7	7	7	12	7	51
2010	10	8	16	11	12	10	67
2011	5	9	11	8	14	6	53
2012	14	8	6	18	11	4	61
2013	4	10	16	8	13	1	52

Number of Days	New Year’s Day	Memorial Day	July 4th	Labor Day	Thanksgiving	Christmas Day	Total
2009	5	4	4	4	5	4	26
2010	4	4	4	4	5	4	25
2011	4	4	4	4	5	4	25
2012	4	4	2	4	5	5	24
2013	5	4	5	4	5	2	25

Section 2

Geographic Location



Section 2: – Geographic Location

Fatal Crashes in Arizona (777) accounted for 0.72% of all crashes, Injury Crashes (34,047) accounted for 31.72%, and Property Damage Only (PDO) Crashes (72,524) accounted for 67.56%.

**Table 2 – 1
Crash Severity by First Harmful Event Statewide**

First Harmful Event Type	Number of Crashes				Number of Persons	
	Total	Fatal	Injury	PDO	Killed	Injured
Collision with Motor Vehicle in Transport	64,751	260	19,148	45,343	301	29,871
Overturning	2,350	140	1,506	704	149	2,196
Collision with Pedestrian	1,079	149	818	112	150	886
Collision with Pedalcyclist	1,519	30	1,231	258	30	1,259
Collision with Animal	1,598	2	166	1,430	2	228
Collision with Fixed Object	10,784	169	3,262	7,353	184	4,110
Collision with Non-fixed Object*	4,237	8	416	3,813	9	514
Vehicle Fire or Explosion	341	2	10	329	2	11
Other Non-collision**	1,130	8	269	853	8	300
Unknown	19,559	9	7,221	12,329	9	10,909
TOTAL	107,348	777	34,047	72,524	844	50,284
*Includes Collision with Parked Vehicles, Trains, Railway Vehicles, and Work Zone Equipment						
**Includes Vehicle Immersion, Jackknife, and Cargo Loss or Shift						

**Table 2 – 2
Crashes by County**

County	Number of Crashes				Number of Persons	
	Total	Fatal	Injury	PDO	Killed	Injured
Apache	358	21	121	216	25	194
Cochise	1,441	16	402	1,023	20	560
Coconino	3,547	38	859	2,650	40	1,250
Gila	806	22	223	561	22	313
Graham	310	2	93	215	2	135
Greenlee	118	4	37	77	6	55
La Paz	331	11	116	204	13	183
Maricopa	76,335	375	23,855	52,105	398	35,219
Mohave	2,835	46	895	1,894	55	1,314
Navajo	1,031	35	289	707	35	484
Pima	10,240	89	4,061	6,090	95	5,972
Pinal	3,793	55	1,202	2,536	60	1,819
Santa Cruz	532	7	104	421	8	153
Yavapai	3,230	33	951	2,246	40	1,410
Yuma	2,441	23	839	1,579	25	1,223
TOTAL	107,348	777	34,047	72,524	844	50,284

Section 2: – Geographic Location

Table 2 – 3
Crash Severity by First Harmful Event in Urban Areas

First Harmful Event Type	Number of Crashes				Number of Persons	
	Total	Fatal	Injury	PDO	Killed	Injured
Collision with Motor Vehicle in Transport	55,505	170	16,289	39,046	186	25,106
Overturning	697	24	503	170	27	630
Collision with Pedestrian	930	107	731	92	108	791
Collision with Pedalcyclist	1,396	21	1,140	235	21	1,161
Collision with Animal	250	0	27	223	0	42
Collision with Fixed Object	7,083	87	2,081	4,915	90	2,564
Collision with Non-fixed Object*	3,186	4	296	2,886	4	361
Vehicle Fire or Explosion	122	0	4	118	0	4
Other Non-collision**	608	5	170	433	5	184
Unknown	17,307	2	6,572	10,733	2	10,000
TOTAL	87,084	420	27,813	58,851	443	40,843
*Includes Collision with Parked Vehicles, Trains, Railway Vehicles, and Work Zone Equipment						
**Includes Vehicle Immersion, Jackknife, and Cargo Loss or Shift						

Table 2 – 4
Crash Severity by First Harmful Event in Rural Areas

First Harmful Event Type	Number of Crashes				Number of Persons	
	Total	Fatal	Injury	PDO	Killed	Injured
Collision with Motor Vehicle in Transport	9,246	90	2,859	6,297	115	4,765
Overturning	1,653	116	1,003	534	122	1,566
Collision with Pedestrian	149	42	87	20	42	95
Collision with Pedalcyclist	123	9	91	23	9	98
Collision with Animal	1,348	2	139	1,207	2	186
Collision with Fixed Object	3,701	82	1,181	2,438	94	1,546
Collision with Non-fixed Object*	1,051	4	120	927	5	153
Vehicle Fire or Explosion	219	2	6	211	2	7
Other Non-collision**	522	3	99	420	3	116
Unknown	2,252	7	649	1,596	7	909
TOTAL	20,264	357	6,234	13,673	401	9,441
*Includes Collision with Parked Vehicles, Trains, Railway Vehicles, and Work Zone Equipment						
**Includes Vehicle Immersion, Jackknife, and Cargo Loss or Shift						

While Urban Crashes in Arizona (87,084) accounted for 81.12% of all crashes, they accounted for 54.05% of all Fatal Crashes (420) occurring in 2013.

While Rural Crashes in Arizona (20,264) accounted for 18.88% of all crashes, they accounted for 45.95% of all Fatal Crashes (357) occurring in 2013.

Section 2: – Geographic Location

Table 2 – 5

Analysis by Jurisdiction

COUNTIES Cities	Number of Crashes				No. of Persons		Alcohol Related		
	Total	Fatal	Injury	PDO	Killed	Injured	Crashes	Killed	Injured
Apache County	323	21	106	196	25	169	21	6	20
Eagar	12	0	6	6	0	13	0	0	0
St. Johns	4	0	3	1	0	3	0	0	0
Springerville	19	0	6	13	0	9	1	0	0
TOTAL	358	21	121	216	25	194	22	6	20

Cochise County	608	14	184	410	18	272	28	5	17
Benson	79	0	24	55	0	36	6	0	3
Bisbee	1	0	0	1	0	0	1	0	0
Douglas	139	0	26	113	0	31	5	0	0
Huachuca City	3	0	0	3	0	0	0	0	0
Sierra Vista	583	2	162	419	2	215	15	0	6
Tombstone	0	0	0	0	0	0	0	0	0
Willcox	28	0	6	22	0	6	1	0	0
TOTAL	1,441	16	402	1,023	20	560	56	5	26

Coconino County	1,252	31	356	865	33	555	63	8	63
Flagstaff	1,856	6	388	1,462	6	531	62	4	44
Fredonia	0	0	0	0	0	0	0	0	0
Williams	96	0	16	80	0	22	3	0	0
Page	120	0	34	86	0	55	10	0	2
Sedona	223	1	65	157	1	87	9	1	5
TOTAL	3,547	38	859	2,650	40	1,250	147	13	114

Gila County	513	17	135	361	17	196	29	6	19
Globe	165	2	46	117	2	63	7	0	2
Hayden	1	0	0	1	0	0	0	0	0
Miami	13	1	5	7	1	5	0	0	0
Payson	114	2	37	75	2	49	4	1	1
Winkelman	0	0	0	0	0	0	0	0	0
TOTAL	806	22	223	561	22	313	40	7	22

Graham County	145	1	54	90	1	78	17	1	19
Pima	0	0	0	0	0	0	0	0	0
Safford	115	0	28	87	0	40	9	0	2
Thatcher	50	1	11	38	1	17	1	1	2
TOTAL	310	2	93	215	2	135	27	2	23

Greenlee County	68	2	23	43	3	37	4	1	5
Clifton	47	1	14	32	2	18	4	0	3
Duncan	3	1	0	2	1	0	1	1	0
TOTAL	118	4	37	77	6	55	9	2	8

Section 2: – Geographic Location

Table 2 – 5

Analysis by Jurisdiction

COUNTIES Cities	Number of Crashes				No. of Persons		Alcohol Related		
	Total	Fatal	Injury	PDO	Killed	Injured	Crashes	Killed	Injured
La Paz County	258	8	96	154	9	149	8	2	1
Parker	25	0	3	22	0	3	2	0	0
Quartzite	48	3	17	28	4	31	3	1	1
TOTAL	331	11	116	204	13	183	13	3	2

Maricopa County	5,505	64	1,777	3,664	66	2,667	225	13	157
Avondale	1,140	9	323	808	9	450	56	1	38
Buckeye	487	6	124	357	6	196	22	1	17
Cave Creek	43	0	13	30	0	20	12	0	6
Chandler	4,046	12	1,141	2,893	12	1,613	162	7	94
El Mirage	409	1	112	296	1	161	19	0	10
Gila Bend	32	0	11	21	0	14	1	0	2
Gilbert	2,751	7	618	2,126	7	846	112	1	60
Glendale	4,859	19	1,436	3,404	20	2,199	188	12	102
Goodyear	870	5	303	562	5	416	52	2	44
Mesa	7,082	35	2,197	4,850	40	3,085	282	7	174
Paradise Valley	175	0	46	129	0	64	6	0	3
Peoria	2,047	5	581	1,461	5	826	88	1	51
Phoenix	32,954	172	10,810	21,972	184	16,442	1,478	70	980
Scottsdale	4,101	8	1,430	2,663	8	2,055	207	1	135
Surprise	1,027	5	274	748	5	436	34	0	18
Tempe	7,610	19	2,333	5,258	21	3,263	293	4	203
Tolleson	372	2	97	273	3	161	20	0	9
Wickenburg	82	0	23	59	0	33	1	0	0
Youngtown	40	0	12	28	0	15	1	0	0
Guadalupe	273	2	77	194	2	101	8	1	5
Litchfield Park	38	1	10	27	1	14	0	0	0
Queen Creek	222	1	56	165	1	71	9	0	5
Fountain Hills	144	0	44	100	0	61	12	0	9
Carefree	26	2	7	17	2	10	3	0	1
TOTAL	76,335	375	23,855	52,105	398	35,219	3,291	121	2,123

Mohave County	1,007	30	334	643	38	518	69	6	62
Kingman	542	8	163	371	8	211	27	2	19
Lake Havasu City	620	5	198	417	5	271	64	1	39
Bullhead City	651	3	198	450	4	311	37	2	21
Colorado City	15	0	2	13	0	3	0	0	0
TOTAL	2,835	46	895	1,894	55	1,314	197	11	141

Section 2: – Geographic Location

Table 2 – 5

Analysis by Jurisdiction

COUNTIES Cities	Number of Crashes				No. of Persons		Alcohol Related		
	Total	Fatal	Injury	PDO	Killed	Injured	Crashes	Killed	Injured
Navajo County	546	28	164	354	28	299	48	8	65
Holbrook	77	2	18	57	2	33	4	0	5
Show Low	211	3	60	148	3	78	6	1	6
Snowflake	39	0	8	31	0	16	1	0	3
Taylor	34	1	7	26	1	8	1	1	0
Winslow	15	0	5	10	0	10	2	0	1
Pinetop-Lakeside	109	1	27	81	1	40	7	1	0
TOTAL	1,031	35	289	707	35	484	69	11	80

Pima County	3,823	41	1,183	2,599	47	1,686	251	20	149
South Tucson	86	0	33	53	0	50	1	0	1
Tucson	4,863	44	2,458	2,361	44	3,679	472	22	317
Sahuarita	253	1	69	183	1	101	7	0	10
Oro Valley	448	0	146	302	0	196	9	0	1
Marana	767	3	172	592	3	260	16	1	10
TOTAL	10,240	89	4,061	6,090	95	5,972	756	43	488

Pinal County	1,888	38	619	1,231	42	987	118	11	106
Casa Grande	848	5	249	594	5	370	39	1	23
Coolidge	143	0	40	103	0	52	8	0	2
Eloy	117	2	35	80	3	43	5	0	3
Florence	70	2	28	40	2	36	5	0	5
Kearny	2	0	1	1	0	1	0	0	0
Mammoth	1	0	0	1	0	0	0	0	0
Superior	3	0	1	2	0	1	0	0	0
Apache Junction	455	7	155	293	7	229	25	4	27
Maricopa	266	1	74	191	1	100	20	0	17
TOTAL	3,793	55	1,202	2,536	60	1,819	220	16	183

Santa Cruz County	234	5	53	176	6	82	6	2	7
Nogales	298	2	51	245	2	71	4	0	3
Patagonia	0	0	0	0	0	0	0	0	0
TOTAL	532	7	104	421	8	153	10	2	10

Yavapai County	1,349	27	446	876	33	692	96	6	66
Clarkdale	23	0	7	16	0	8	5	0	5
Cottonwood	254	1	68	185	1	102	12	1	10
Jerome	3	0	2	1	0	3	1	0	1
Prescott	785	2	225	558	2	295	33	0	22
Prescott Valley	534	1	136	397	1	205	31	0	17
Chino Valley	142	0	33	109	0	51	12	0	8
Camp Verde	121	1	29	91	2	48	13	2	7
Dewey-Humboldt	19	1	5	13	1	6	2	0	1
TOTAL	3,230	33	951	2,246	40	1,410	205	9	137

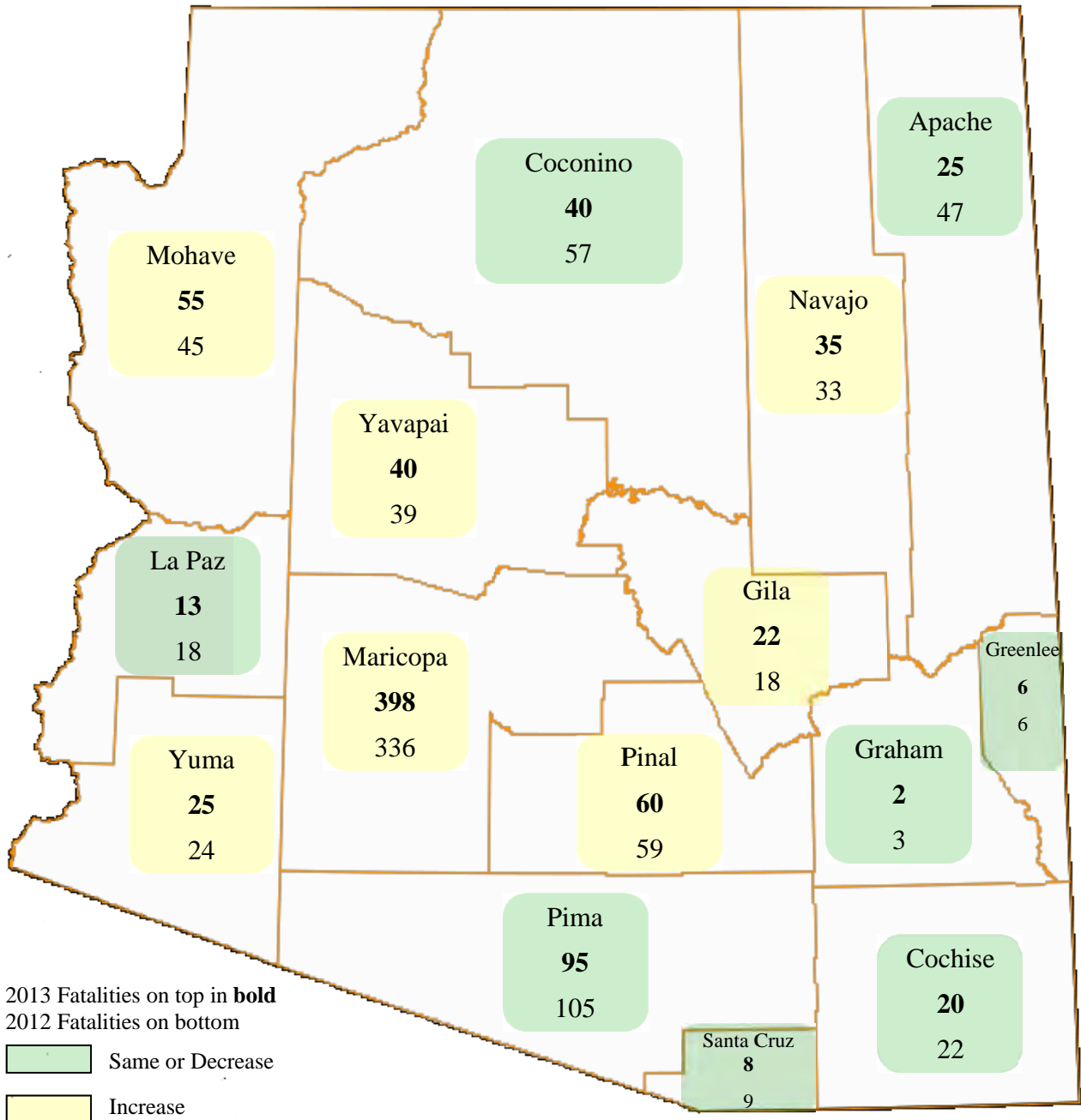
Section 2: – Geographic Location

Table 2 – 5
Analysis by Jurisdiction

COUNTIES Cities	Number of Crashes				No. of Persons		Alcohol Related		
	Total	Fatal	Injury	PDO	Killed	Injured	Crashes	Killed	Injured
Yuma County	584	12	166	406	14	254	31	5	25
Somerton	35	0	3	32	0	5	2	0	0
Yuma	1,663	10	632	1,021	10	916	89	5	71
Wellton	6	0	3	3	0	5	1	0	2
San Luis	153	1	35	117	1	43	5	1	5
TOTAL	2,441	23	839	1,579	25	1,223	128	11	103

Note: Some individual city data may be incomplete due to lack of timely reporting or changes in crash reporting procedures.

Total Fatalities by County for 2012 and 2013



Section 2: – Geographic Location

Chart 2 – 1

Urban and Rural Crashes by Day of Week

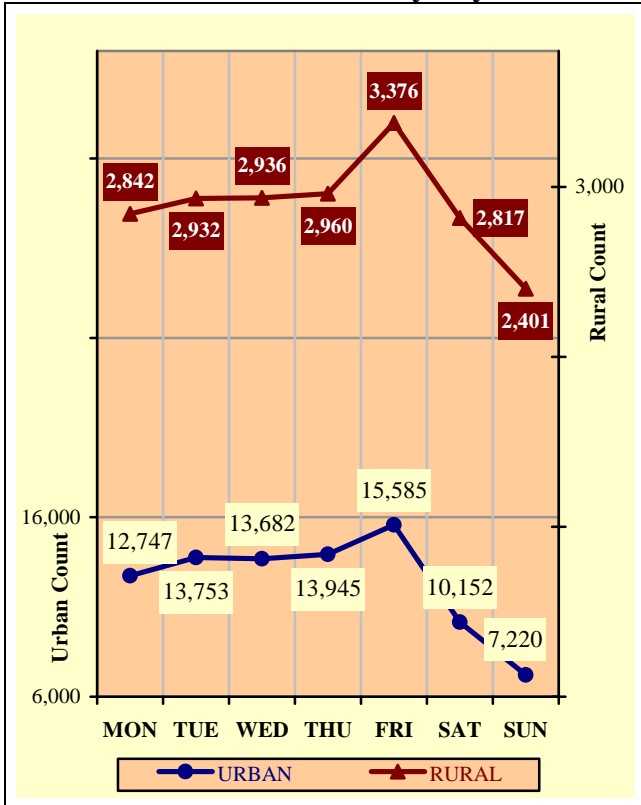


Chart 2 – 2

Urban and Rural Fatal Crashes by Day of Week

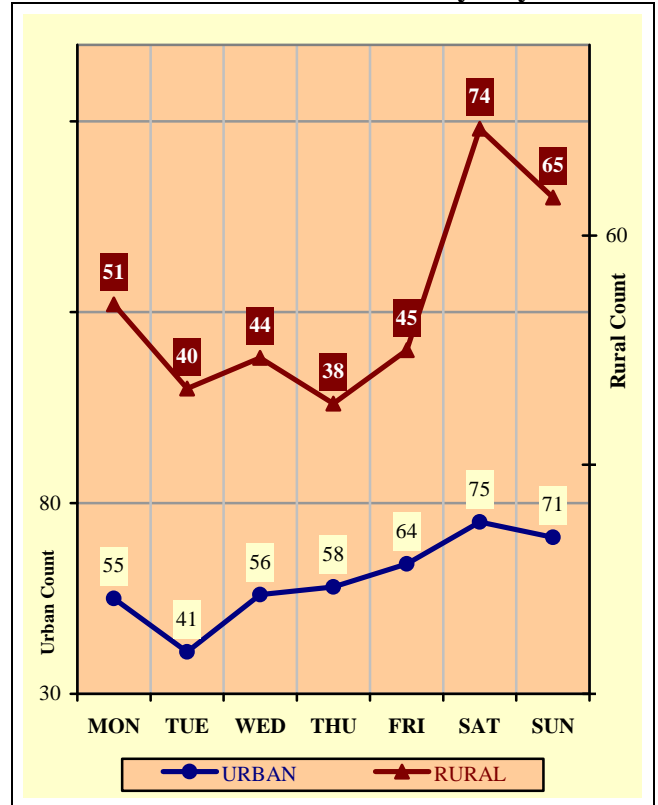
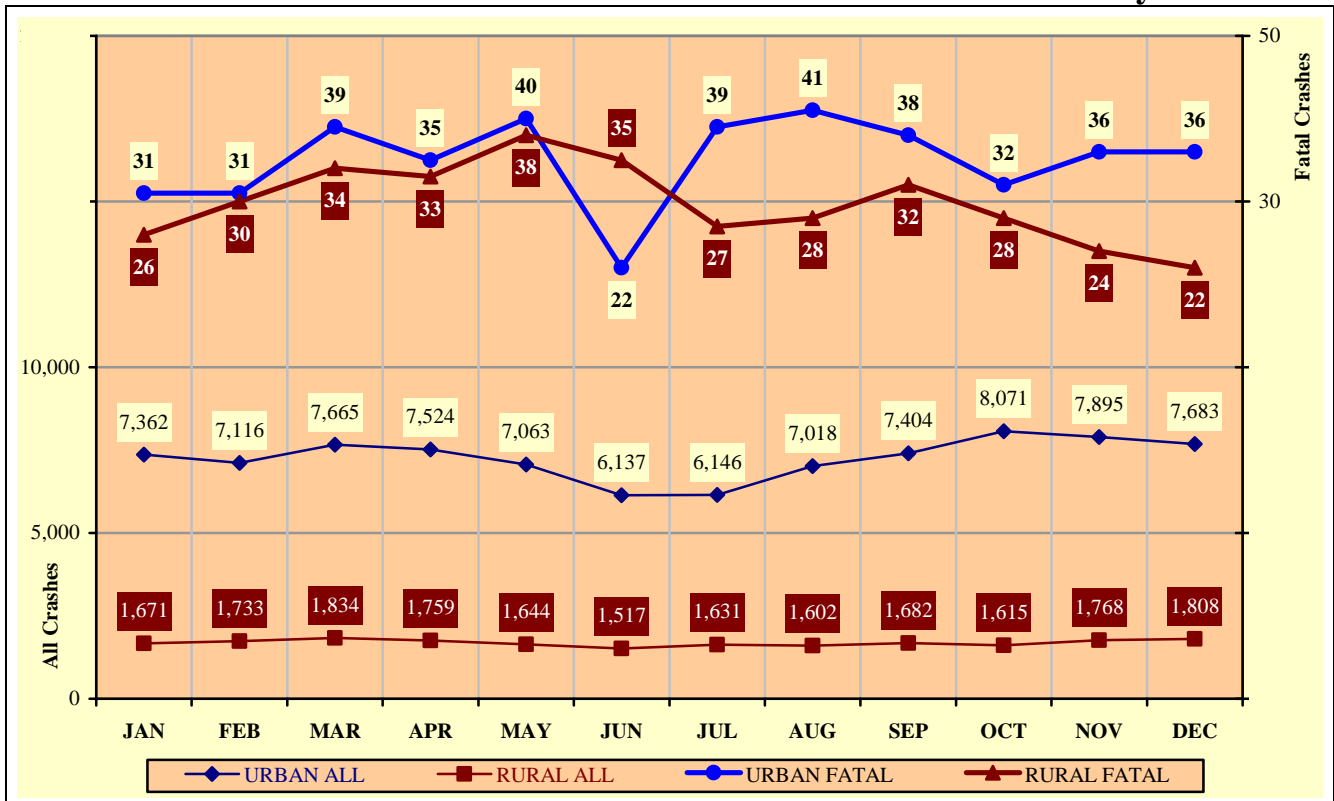


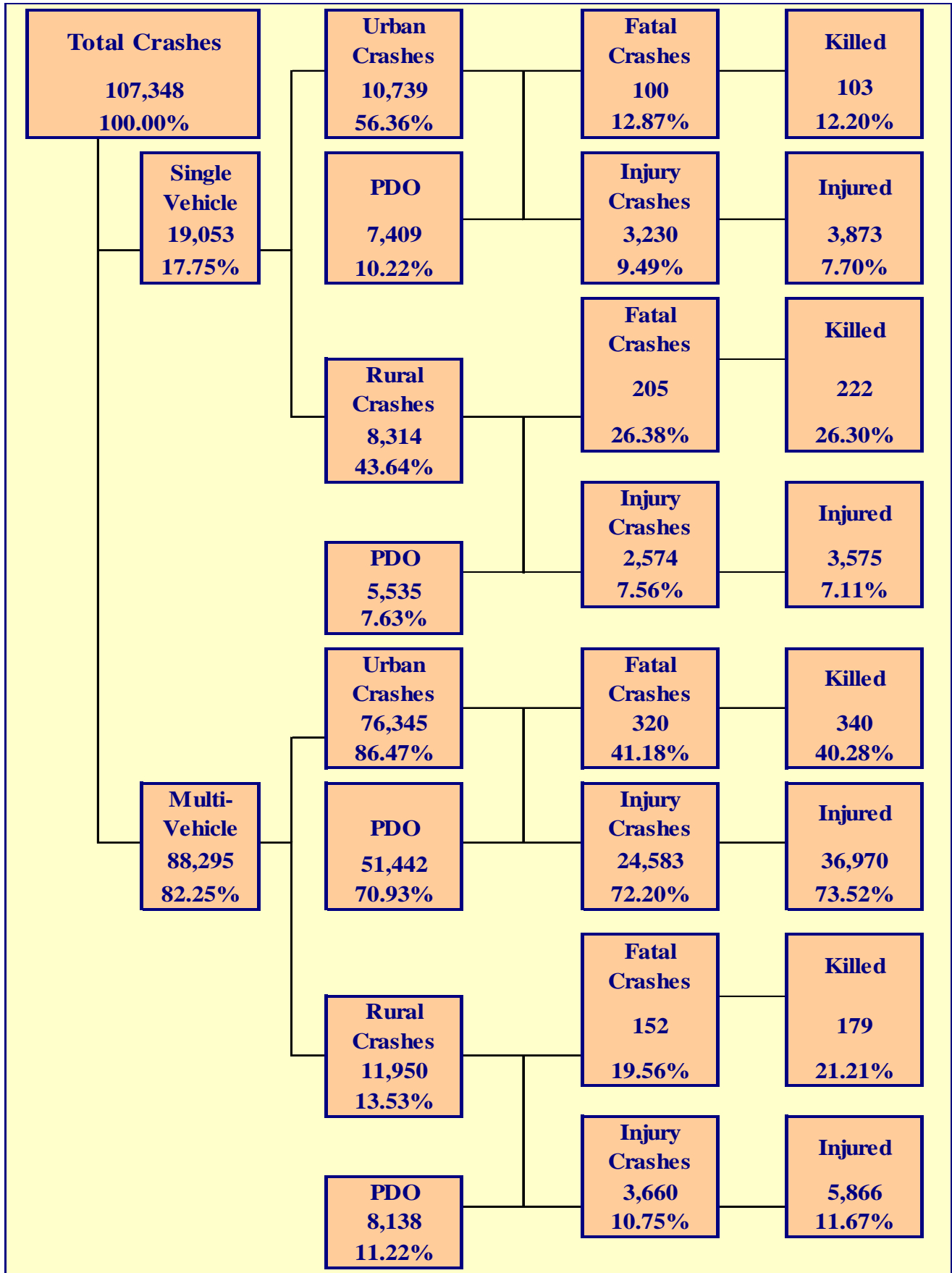
Chart 2 – 3

All Urban and Rural Crashes vs. Urban and Rural Fatal Crashes by Month



Section 3

Crash Descriptions



Section 3: – Crash Descriptions

Table 3 – 1
Manner of Collision in Multi-Vehicle Crashes

Manner of Collision Type	Number of Crashes							
	Total	Percent of Total Crashes	Fatal	Percent of Fatal Crashes	Injury	Percent of Injury Crashes	PDO	Percent of PDO Crashes
Angle	14,757	16.71%	71	15.04%	6,029	21.35%	8,657	14.53%
Left Turn	12,828	14.53%	54	11.44%	5,377	19.04%	7,397	12.42%
Rear End	40,599	45.98%	49	10.38%	12,269	43.44%	28,281	47.47%
Head-On	1,605	1.82%	47	9.96%	769	2.72%	789	1.32%
Sideswipe (same)	11,326	12.83%	24	5.08%	1,521	5.39%	9,781	16.42%
Sideswipe (opposite)	1,257	1.42%	5	1.06%	344	1.22%	908	1.52%
Rear to Side	905	1.02%	0	0.00%	60	0.21%	845	1.42%
Rear to Rear	299	0.34%	0	0.00%	64	0.23%	235	0.39%
Other	3,893	4.41%	215	45.55%	1,610	5.70%	2,068	3.47%
Unknown	826	0.94%	7	1.48%	200	0.71%	619	1.04%
TOTAL	88,295	100.00%	472	100.00%	28,243	100.00%	59,580	100.00%

Table 3 – 2
Lighting Conditions

Type of Lighting Conditions	Number of Crashes				Number of Persons	
	Total	Fatal	Injury	PDO	Killed	Injured
Daylight	76,926	352	24,470	52,104	384	35,933
Dawn	1,748	26	524	1,198	29	770
Dusk	3,218	26	1,036	2,156	27	1,600
Dark - Lighted	18,559	182	6,060	12,317	187	9,051
Dark - Not Lighted	6,175	131	1,835	4,209	155	2,747
Dark - Unknown Lighting	722	60	122	540	62	183
TOTAL	107,348	777	34,047	72,524	844	50,284

Table 3 – 3
Weather Conditions

Type of Weather Conditions	Number of Crashes				Number of Persons	
	Total	Fatal	Injury	PDO	Killed	Injured
Clear	92,799	598	29,661	62,540	649	43,872
Cloudy	8,605	53	2,776	5,776	55	4,059
Sleet/Hail	145	1	49	95	1	75
Rain	4,071	17	1,150	2,904	18	1,616
Snow	627	1	138	488	1	200
Severe Crosswinds	94	1	29	64	1	44
Blowing Sand, Soil, Dirt	104	1	50	53	3	89
Fog, Smog, Smoke	27	0	8	19	0	13
Blowing Snow	26	0	7	19	0	10
Other	62	1	22	39	1	31
Unknown	788	104	157	527	115	275
TOTAL	107,348	777	34,047	72,524	844	50,284

Section 3: – Crash Descriptions

Table 3 – 4
Road Surface Conditions

Type of Road Surface Condition	Number of Drivers				Number of Persons	
	Total	In Fatal Crashes	In Injury Crashes	In PDO Crashes	Killed	Injured
Dry	190,364	982	61,758	127,624	685	47,245
Wet	9,082	34	2,686	6,362	23	2,088
Snow	735	0	151	584	0	130
Slush	160	3	52	105	1	47
Ice/Frost	590	5	136	449	3	147
Water (standing or moving)	104	2	34	68	2	32
Sand	65	3	20	42	3	19
Mud, Dirt, Gravel	511	14	168	329	12	215
Oil	23	0	7	16	0	6
Other	70	2	19	49	2	16
Unknown	2,555	140	549	1,866	113	339
TOTAL	204,259	1,185	65,580	137,494	844	50,284

Table 3 – 5
Roadway Grade

Type of Roadway Grade	Number of Drivers				Number of Persons	
	Total	In Fatal Crashes	In Injury Crashes	In PDO Crashes	Killed	Injured
Level	186,458	853	59,789	125,816	573	45,400
Downhill	8,064	93	2,759	5,212	77	2,458
Uphill	6,239	77	2,043	4,119	60	1,718
Hillcrest	431	3	165	263	2	133
Sag/Dip/Bottom	212	8	88	116	9	99
Unknown	2,855	151	736	1,968	123	476
TOTAL	204,259	1,185	65,580	137,494	844	50,284

Table 3 – 6
Roadway Alignment

Type of Roadway Alignment	Number of Drivers				Number of Persons	
	Total	In Fatal Crashes	In Injury Crashes	In PDO Crashes	Killed	Injured
Straight	150,373	894	46,628	102,851	584	35,107
Curve Left	4,646	82	1,524	3,040	70	1,519
Curve Right	4,869	71	1,447	3,351	77	1,457
Unknown	44,371	138	15,981	28,252	113	12,201
TOTAL	204,259	1,185	65,580	137,494	844	50,284

Section 3: – Crash Descriptions

Chart 3 – 1

All Crashes vs. Fatal Crashes by Time of Day - Weekdays

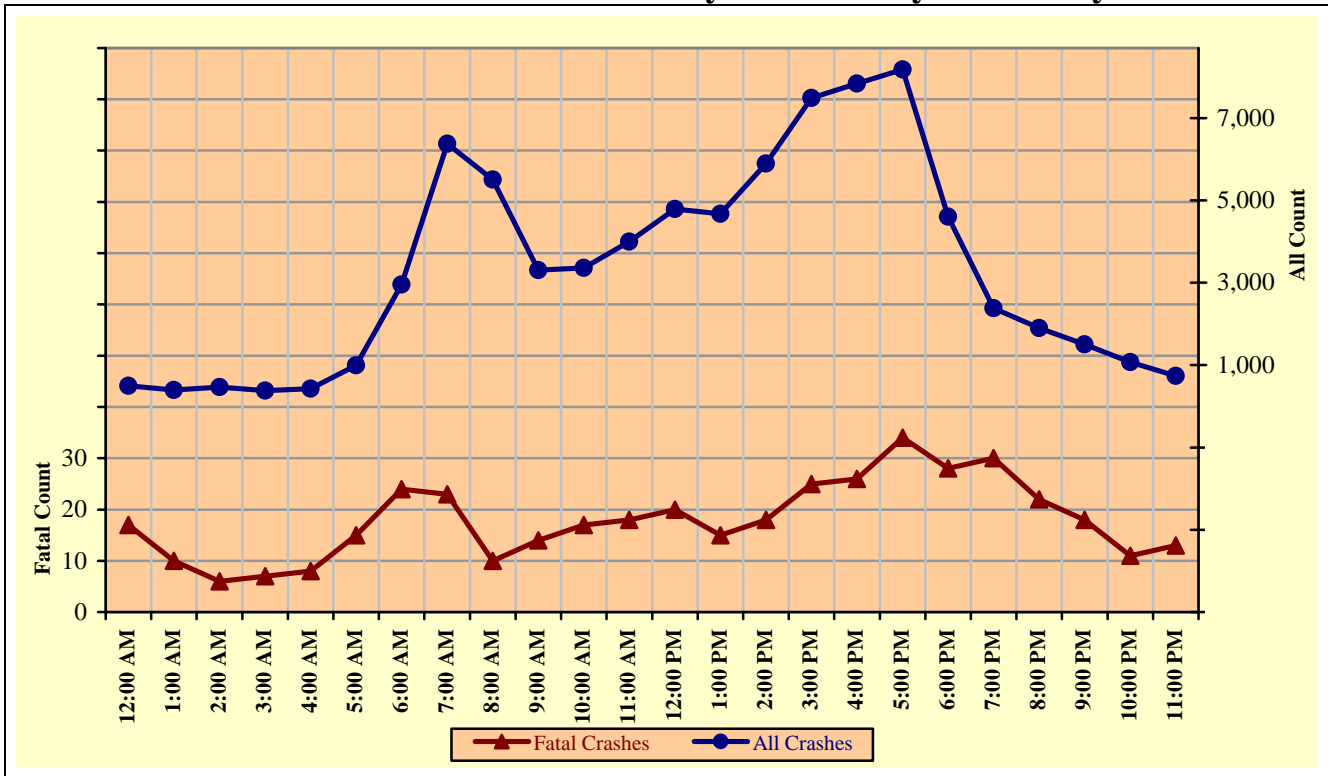
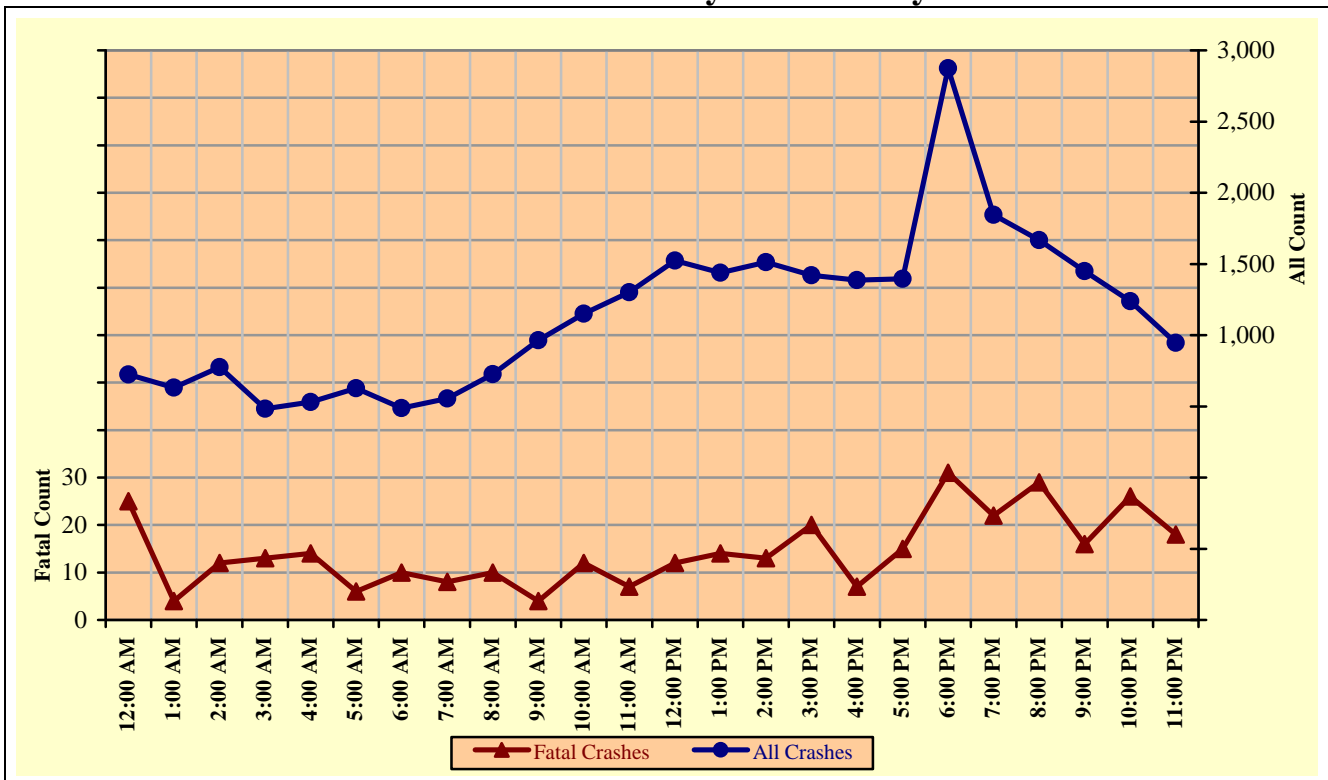


Chart 3 – 2

All Crashes vs. Fatal Crashes by Time of Day - Weekends



Section 3: – Crash Descriptions

Chart 3 – 3
Crashes by Day of Week

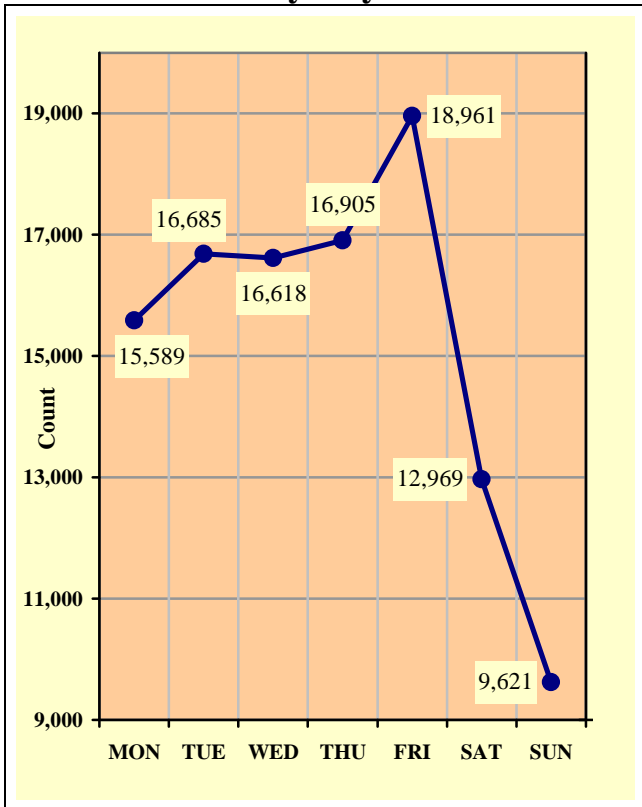


Chart 3 – 4
Fatal Crashes by Day of Week

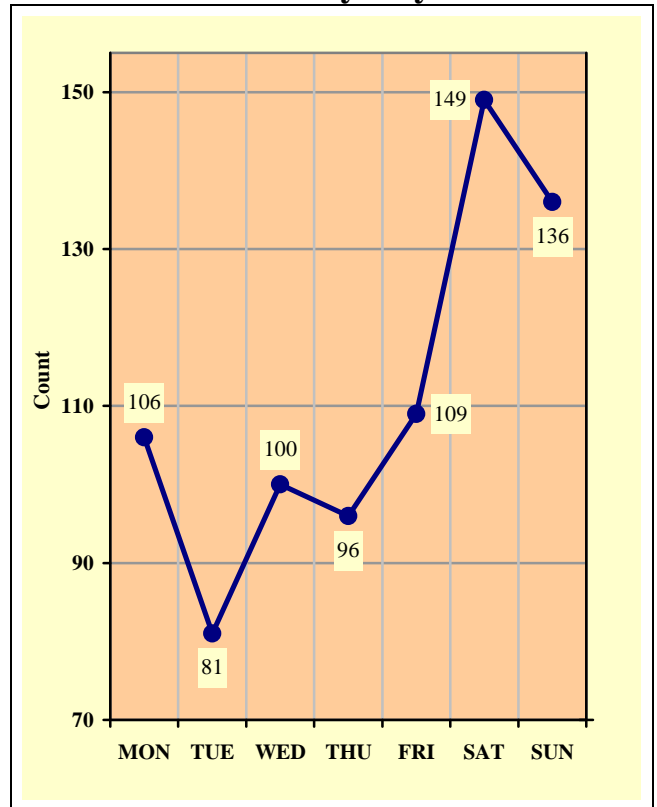
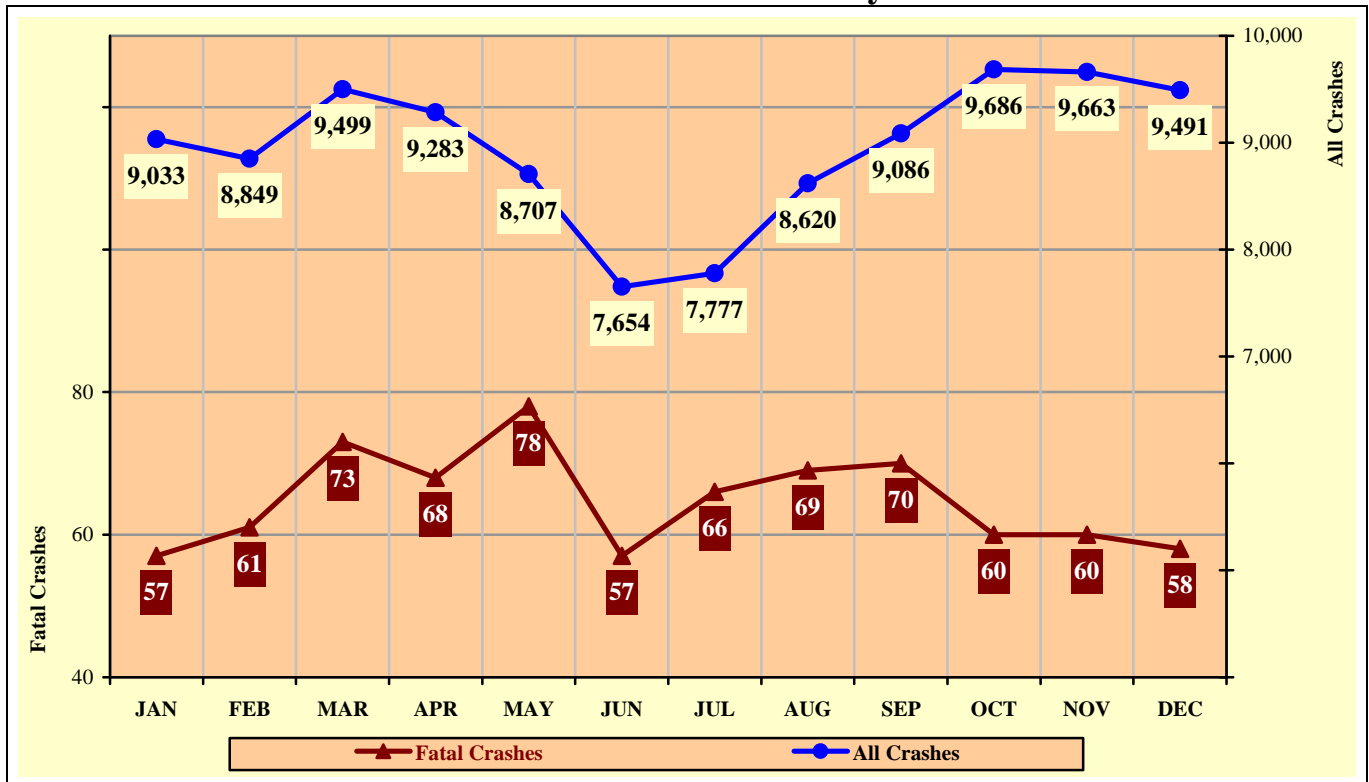


Chart 3 – 5
All Crashes vs. Fatal Crashes by Month



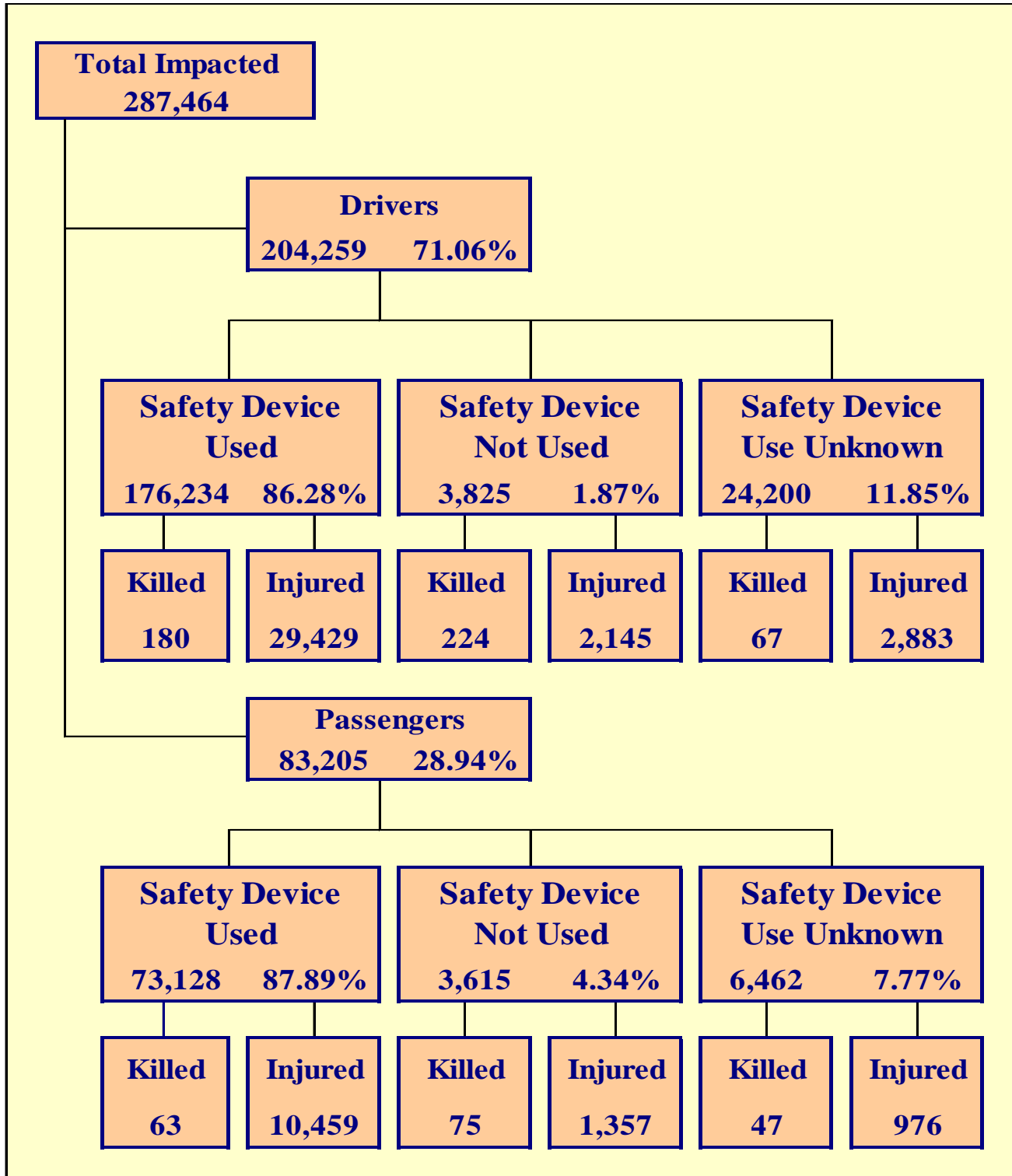
Section 3: – Crash Descriptions

**Table 3 – 7
Crashes by Hour and Day of Week**

Hour Beginning	Total Crashes		Monday		Tuesday		Wednesday		Thursday		Friday		Saturday		Sunday		Weekdays		Weekends	
	All	Fatal	All	Fatal	All	Fatal	All	Fatal	All	Fatal	All	Fatal	All	Fatal	All	Fatal	All	Fatal	All	Fatal
12:00 AM	1,222	42	149	6	110	4	99	1	126	4	164	8	290	10	284	9	499	17	723	25
1:00 AM	1,025	14	91	1	84	1	85	3	119	3	106	3	266	3	274	0	394	10	631	4
2:00 AM	1,242	18	114	0	95	1	109	1	98	1	164	3	317	6	345	6	466	6	776	12
3:00 AM	862	20	88	5	89	2	65	1	94	3	131	1	207	3	188	5	379	7	483	13
4:00 AM	957	22	111	2	94	3	96	2	113	3	123	0	221	5	199	7	426	8	531	14
5:00 AM	1,619	21	262	1	276	4	237	3	238	5	242	3	180	3	184	2	993	15	626	6
6:00 AM	3,443	34	535	6	646	6	641	2	595	3	538	7	258	5	230	5	2,955	24	488	10
7:00 AM	6,932	31	1,239	7	1,376	6	1,286	4	1,355	2	1,122	4	345	2	209	6	6,378	23	554	8
8:00 AM	6,229	20	1,104	2	1,181	4	1,116	1	1,087	1	1,016	2	423	4	302	6	5,504	10	725	10
9:00 AM	4,268	18	617	4	702	1	680	8	637	1	668	0	589	2	375	2	3,304	14	964	4
10:00 AM	4,507	29	664	5	668	1	665	6	661	2	699	3	665	6	485	6	3,357	17	1,150	12
11:00 AM	5,296	25	734	2	743	4	833	5	812	7	872	0	791	5	511	2	3,994	18	1,302	7
12:00 PM	6,313	32	867	7	933	3	908	3	949	4	1,132	3	885	5	639	7	4,789	20	1,524	12
1:00 PM	6,110	29	868	5	930	1	878	2	889	3	1,107	4	883	11	555	3	4,672	15	1,438	14
2:00 PM	7,403	31	1,155	3	1,111	2	1,128	3	1,101	7	1,396	3	868	6	644	7	5,891	18	1,512	13
3:00 PM	8,911	45	1,355	4	1,446	5	1,438	7	1,502	4	1,749	5	817	14	604	6	7,490	25	1,421	20
4:00 PM	9,226	33	1,432	7	1,610	3	1,516	8	1,521	3	1,760	5	770	3	617	4	7,839	26	1,387	7
5:00 PM	9,575	49	1,415	9	1,636	5	1,680	6	1,721	7	1,727	7	814	7	582	8	8,179	34	1,396	15
6:00 PM	7,480	59	988	8	1,153	10	1,242	4	1,223	6	1,401	11	835	9	638	11	4,606	28	2,874	31
7:00 PM	4,223	52	597	9	584	4	603	10	594	7	712	6	610	9	523	7	2,378	30	1,845	22
8:00 PM	3,560	51	439	3	460	5	500	10	494	4	669	9	565	9	433	11	1,893	22	1,667	29
9:00 PM	2,949	34	335	2	360	5	377	2	428	9	611	7	503	4	335	5	1,500	18	1,449	16
10:00 PM	2,310	37	258	3	223	1	253	4	337	3	472	11	481	8	286	7	1,071	11	1,239	26
11:00 PM	1,686	31	172	5	175	0	183	4	211	4	380	4	386	10	179	4	741	13	945	18
TOTAL	107,348	777	15,589	106	16,685	81	16,618	100	16,905	96	18,961	109	12,969	149	9,621	136	79,698	429	27,650	348

Crashes during Weekends accounted for 25.76% of all crashes and 44.79% of Fatal Crashes.

Crashes during Weekdays accounted for 74.24% of all crashes and 55.21% of Fatal Crashes.



Section 4: – Safety Devices

**Table 4 – 1
Child Safety Device Usage (less than five years old)**

Severity of Injury	Safety Device Used	Percent of Safety Device Used	Safety Device Not Used	Percent of Safety Device Not Used	Safety Device Use Unknown	Percent of Unknown
No Injury	10,013	90.81%	149	66.52%	213	64.74%
Unknown Injury	122	1.11%	1	0.45%	72	21.88%
Possible Injury	661	5.99%	28	12.50%	21	6.38%
Non-Incapacitating Injury	189	1.71%	31	13.84%	18	5.47%
Incapacitating Injury	38	0.34%	8	3.57%	4	1.22%
Fatal Injury	3	0.03%	7	3.13%	1	0.30%
TOTALS	11,026	100.00%	224	100.00%	329	100.00%

**Table 4 – 2
Driver Safety Device Usage**

Severity of Injury	Safety Device Used	Percent of Safety Device Used	Safety Device Not Used	Percent of Safety Device Not Used	Safety Device Use Unknown	Percent of Unknown
No Injury	145,275	82.43%	1,383	36.16%	11,191	46.24%
Unknown Injury	1,350	0.77%	73	1.91%	10,059	41.57%
Possible Injury	17,883	10.15%	580	15.16%	1,252	5.17%
Non-Incapacitating Injury	9,705	5.51%	1,033	27.01%	1,216	5.02%
Incapacitating Injury	1,841	1.04%	532	13.91%	415	1.71%
Fatal Injury	180	0.10%	224	5.86%	67	0.28%
TOTALS	176,234	100.00%	3,825	100.00%	24,200	100.00%

**Table 4 – 3
Passenger Safety Device Usage**

Severity of Injury	Safety Device Used	Percent of Safety Device Used	Safety Device Not Used	Percent of Safety Device Not Used	Safety Device Use Unknown	Percent of Unknown
No Injury	61,948	84.71%	2,135	59.06%	4,320	66.85%
Unknown Injury	658	0.90%	48	1.33%	1,119	17.32%
Possible Injury	6,689	9.15%	490	13.55%	469	7.26%
Non-Incapacitating Injury	3,177	4.34%	578	15.99%	366	5.66%
Incapacitating Injury	593	0.81%	289	7.99%	141	2.18%
Fatal Injury	63	0.09%	75	2.07%	47	0.73%
TOTALS	73,128	100.00%	3,615	100.00%	6,462	100.00%

Section 4: – Safety Devices

**Table 4 – 4
Driver Safety Device Usage by Gender**

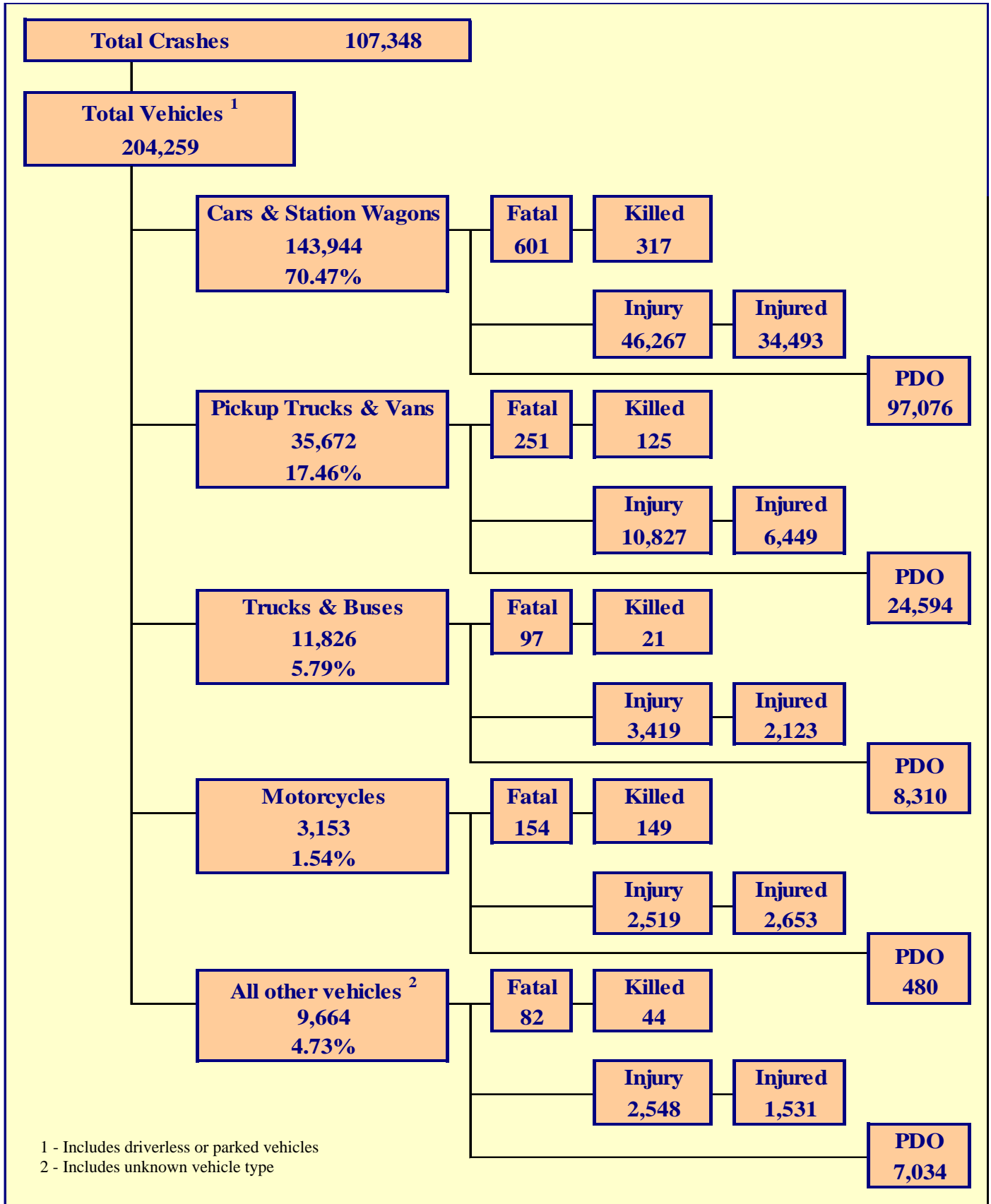
Gender of Driver	Number of Drivers						Total	Percent of Total
	Safety Device Used	Percent of Safety Device Used	Safety Device Not Used	Percent of Safety Device Not Used	Safety Device Use Unknown	Percent of Unknown		
Male	97,481	55.31%	2,762	72.21%	8,361	34.55%	108,604	53.17%
Female	78,629	44.62%	1,040	27.19%	4,330	17.89%	83,999	41.12%
Unknown	124	0.07%	23	0.60%	11,509	47.56%	11,656	5.71%
TOTAL	176,234	100.00%	3,825	100.00%	24,200	100.00%	204,259	100.00%

**Table 4 – 5
Driver Safety Device Usage by Age**

Driver Age Group	Number of Drivers						Total	Percent of Total
	Safety Device Used	Percent of Safety Device Used	Safety Device Not Used	Percent of Safety Device Not Used	Safety Device Use Unknown	Percent of Unknown		
15 & Under	242	0.14%	24	0.63%	57	0.24%	323	0.16%
16	2,393	1.36%	59	1.54%	130	0.54%	2,582	1.26%
17	3,795	2.15%	107	2.80%	230	0.95%	4,132	2.02%
18	5,004	2.84%	125	3.27%	316	1.31%	5,445	2.67%
19	5,340	3.03%	165	4.31%	339	1.40%	5,844	2.86%
20	5,219	2.96%	146	3.82%	301	1.24%	5,666	2.77%
21	5,233	2.97%	156	4.08%	381	1.57%	5,770	2.82%
22	5,018	2.85%	144	3.76%	360	1.49%	5,522	2.70%
23	4,764	2.70%	157	4.10%	357	1.48%	5,278	2.58%
24	4,462	2.53%	118	3.08%	354	1.46%	4,934	2.42%
25-34	38,015	21.57%	855	22.35%	2,666	11.02%	41,536	20.33%
35-44	31,266	17.74%	561	14.67%	1,882	7.78%	33,709	16.50%
45-54	26,898	15.26%	506	13.23%	1,608	6.64%	29,012	14.20%
55-64	19,992	11.34%	359	9.39%	1,106	4.57%	21,457	10.50%
65-74	11,175	6.34%	179	4.68%	590	2.44%	11,944	5.85%
75 & Older	6,222	3.53%	92	2.41%	328	1.36%	6,642	3.25%
Unknown	1,196	0.68%	72	1.88%	13,195	54.52%	14,463	7.08%
TOTAL	176,234	100.00%	3,825	100.00%	24,200	100.00%	204,259	100.00%

Section 5

Motor Vehicle and Driver Descriptions



Section 5: – Motor Vehicle and Driver Descriptions

Table 5 – 1

Arizona Motor Vehicle Registrations

Privately Owned Vehicles	4,487,203
Commercial Vehicles	458,522
Buses and Taxis	4,346
Motorcycles	180,338
Mopeds	371
TOTAL	5,130,780
Source: MVD - MV988 MV630419, Currently Registered Vehicles by County Listing, dated 12/31/2013.	

Table 5 – 2

Motor Vehicle Crash Involvement by Vehicle Type

Motor Vehicle Type	Number of Vehicles				
	Total	Percent of Total	In Fatal Crashes	In Injury Crashes	In PDO Crashes
Passenger Cars (Sedans, Convertibles, etc.)	102,427	50.146%	388	32,715	69,324
Station Wagons	41,517	20.326%	213	13,552	27,752
Pickup Trucks	33,511	16.406%	236	10,147	23,128
Vans	2,161	1.058%	15	680	1,466
Truck Tractor (with or without Semi-Trailer)	2,520	1.234%	47	609	1,864
Concrete Mixer Trucks	57	0.028%	2	21	34
Dump Trucks	183	0.090%	2	41	140
Garbage Trucks	139	0.068%	3	21	115
Tanker Trucks	42	0.021%	1	12	29
Wrecker or Tow Trucks	136	0.067%	1	36	99
Other Truck Combinations	7,664	3.752%	38	2,441	5,185
School Bus	205	0.100%	2	49	154
Commercial or Non-Commercial Bus	880	0.431%	1	189	690
Motorcycle (two or three wheel)	3,153	1.544%	154	2,519	480
All Terrain Vehicle or Cycle	136	0.067%	7	103	26
Moped	22	0.011%	2	17	3
Recreational Vehicle	90	0.044%	0	24	66
Motor Home or House Car	146	0.071%	2	23	121
Fire Trucks	51	0.025%	3	7	41
Ambulances	60	0.029%	0	13	47
Other Types Of Vehicles	145	0.071%	12	69	64
Vehicle Type Unknown	9,014	4.413%	56	2,292	6,666
TOTAL	204,259	100.00%	1,185	65,580	137,494

Section 5: – Motor Vehicle and Driver Descriptions

Table 5 – 3

Hit and Run Drivers Involved in Crashes

Hit and Run	Number of Crashes				Number of Persons	
	Total	Fatal	Injury	PDO	Killed	Injured
Yes	11,679	42	2,296	9,341	43	3,005
No	95,669	735	31,751	63,183	801	47,279
TOTAL	107,348	777	34,047	72,524	844	50,284

Table 5 – 4

Gender of Drivers Involved in Crashes

Gender of Driver	Number of Drivers							
	Total	Percent of Total	In Fatal Crashes	Percent of Fatal	In Injury Crashes	Percent of Injury	In PDO Crashes	Percent of PDO
Male	108,604	53.17%	782	65.99%	35,005	53.38%	72,817	52.96%
Female	83,999	41.12%	323	27.26%	28,670	43.72%	55,006	40.01%
Unknown	11,656	5.71%	80	6.75%	1,905	2.90%	9,671	7.03%
TOTAL	204,259	100.00%	1,185	100.00%	65,580	100.00%	137,494	100.00%

Table 5 – 5

License Status of Drivers Involved in Crashes

License Status of Driver	Number of Drivers							
	Total	Percent of Total	In Fatal Crashes	Percent of Fatal	In Injury Crashes	Percent of Injury	In PDO Crashes	Percent of PDO
Arizona License	163,912	80.25%	850	71.73%	54,226	82.69%	108,836	79.16%
All Others*	40,347	19.75%	335	28.27%	11,354	17.31%	28,658	20.84%
TOTAL	204,259	100.00%	1,185	100.00%	65,580	100.00%	137,494	100.00%

*Includes drivers that have a suspended, revoked, out-of-state or country license, as well as drivers with no license or unknown license type

Table 5 – 6

Passengers Killed and Injured by Age and Gender

Age of Passenger	Passengers Killed			Passengers Injured			Gender Unknown
	Total	Male	Female	Total	Male	Female	
0-4	9	5	4	772	394	378	0
5-9	11	6	5	1,072	506	566	0
10-14	11	7	4	1,170	514	656	0
15-19	20	12	8	1,812	763	1,049	0
20-24	11	7	4	1,449	612	837	0
25-34	35	19	16	1,714	685	1,029	0
35-44	18	8	10	1,180	405	775	0
45-54	11	4	7	1,152	351	801	0
55-64	19	8	11	906	214	692	0
65-74	17	8	9	658	155	503	0
75 & Older	22	11	11	490	137	353	0
Unknown	1	1	0	417	132	243	42
TOTAL	185	96	89	12,792	4,868	7,882	42

Section 5: – Motor Vehicle and Driver Descriptions

Table 5 – 7

Drivers and Passengers Killed and Injured by Vehicle Type

Motor Vehicle Type	Number of Drivers		Number of Passengers	
	Killed	Injured	Killed	Injured
Passenger Cars (Sedans, Convertibles, etc.)	137	18,199	59	6,338
Station Wagons	71	6,845	50	3,111
Pickup Trucks	81	4,398	39	1,641
Vans	1	272	4	138
Truck Tractor (with or without Semi-Trailer)	3	170	0	51
Concrete Mixer Trucks	0	11	0	0
Dump Trucks	0	10	0	2
Garbage Trucks	0	4	0	0
Tanker Trucks	0	5	0	0
Wrecker or Tow Trucks	0	9	0	2
Other Truck Combinations	10	1,014	8	627
School Bus	0	7	0	37
Commercial or Non-Commercial Bus	0	33	0	141
Motorcycle (two or three wheel)	141	2,466	8	187
All Terrain Vehicle or Cycle	7	94	0	44
Moped	2	15	0	2
Recreational Vehicle	0	6	0	7
Motor Home or House Car	0	10	1	2
Fire Trucks	0	1	0	3
Ambulances	0	2	0	9
Other Types Of Vehicles	6	48	5	25
Vehicle Type Unknown	12	838	11	425
TOTAL	471	34,457	185	12,792

Table 5 – 8

Drivers Killed and Injured by Age and Gender

Age of Driver	Drivers Killed			Drivers Injured			
	Total	Male	Female	Total	Male	Female	Gender Unknown
0-4	0	0	0	0	0	0	0
5-9	0	0	0	4	4	0	0
10-14	3	2	1	24	14	10	0
15-19	30	24	6	2,841	1,367	1,474	0
20-24	59	47	12	4,849	2,368	2,481	0
25-34	81	63	18	7,518	3,683	3,835	0
35-44	54	39	15	6,015	2,964	3,051	0
45-54	76	62	14	5,370	2,702	2,668	0
55-64	76	57	19	4,067	2,123	1,944	0
65-74	50	38	12	2,198	1,128	1,070	0
75 & Older	42	26	16	1,305	646	659	0
Unknown	0	0	0	266	163	70	33
TOTAL	471	358	113	34,457	17,162	17,262	33

Section 5: – Motor Vehicle and Driver Descriptions

**Table 5 – 9
Licensed Drivers in Arizona by Age**

Driver Age Group	Male Number	Percent of Male	Female Number	Percent of Female	Total Number	Percent of Total	Cumulative Percent
16	10,254	0.42%	9,772	0.41%	20,026	0.41%	0.41%
17	18,562	0.77%	17,778	0.74%	36,340	0.75%	1.17%
18	26,077	1.07%	23,952	1.00%	50,029	1.04%	2.20%
19	31,279	1.29%	28,934	1.21%	60,213	1.25%	3.45%
20	33,948	1.40%	31,916	1.33%	65,864	1.36%	4.82%
21	36,801	1.52%	34,714	1.45%	71,515	1.48%	6.30%
22	38,017	1.57%	36,841	1.53%	74,858	1.55%	7.85%
23	40,108	1.65%	39,085	1.63%	79,193	1.64%	9.49%
24	40,459	1.67%	39,495	1.65%	79,954	1.66%	11.15%
25-34	440,432	18.15%	435,306	18.13%	875,738	18.14%	29.29%
35-44	461,068	19.01%	435,360	18.13%	896,428	18.57%	47.86%
45-54	454,993	18.75%	438,249	18.25%	893,242	18.51%	66.37%
55-64	398,901	16.44%	415,361	17.30%	814,262	16.87%	83.23%
65-74	246,228	10.15%	258,253	10.76%	504,481	10.45%	93.69%
75 & older	148,877	6.14%	155,883	6.49%	304,760	6.31%	100.00%
TOTALS	2,426,004	100.00%	2,400,899	100.00%	4,826,903	100.00%	100.00%

Source: MVD - MV708 MV650653-1, Point-in-Time Driver Credential Report/All Driver Licenses by Age, Gender, & Class (page 19), dated 1/2/2014.

**Table 5 – 10
Driver Involvement by Age**

Driver Age Group	Number of Drivers							
	Total	Percent of Total	In Fatal Crashes	Percent of Fatal	In Injury Crashes	Percent of Injury	In PDO Crashes	Percent of PDO
15 & Under	323	0.16%	8	0.68%	122	0.19%	193	0.14%
16	2,582	1.26%	9	0.76%	747	1.14%	1,826	1.33%
17	4,132	2.02%	19	1.60%	1,239	1.89%	2,874	2.09%
18	5,445	2.67%	21	1.77%	1,751	2.67%	3,673	2.67%
19	5,844	2.86%	31	2.62%	1,904	2.90%	3,909	2.84%
20	5,666	2.77%	30	2.53%	1,862	2.84%	3,774	2.74%
21	5,770	2.82%	31	2.62%	1,919	2.93%	3,820	2.78%
22	5,522	2.70%	20	1.69%	1,781	2.72%	3,721	2.71%
23	5,278	2.58%	24	2.03%	1,787	2.72%	3,467	2.52%
24	4,934	2.42%	28	2.36%	1,688	2.57%	3,218	2.34%
25-34	41,536	20.33%	210	17.72%	13,649	20.81%	27,677	20.13%
35-44	33,709	16.50%	168	14.18%	11,287	17.21%	22,254	16.19%
45-54	29,012	14.20%	184	15.53%	9,721	14.82%	19,107	13.90%
55-64	21,457	10.50%	146	12.32%	7,214	11.00%	14,097	10.25%
65-74	11,944	5.85%	104	8.78%	3,960	6.04%	7,880	5.73%
75 & Older	6,642	3.25%	64	5.40%	2,315	3.53%	4,263	3.10%
Unknown	14,463	7.08%	88	7.43%	2,634	4.02%	11,741	8.54%
TOTAL	204,259	100.00%	1,185	100.00%	65,580	100.00%	137,494	100.00%

Section 5: – Motor Vehicle and Driver Descriptions

**Table 5 – 11
Driver Violations**

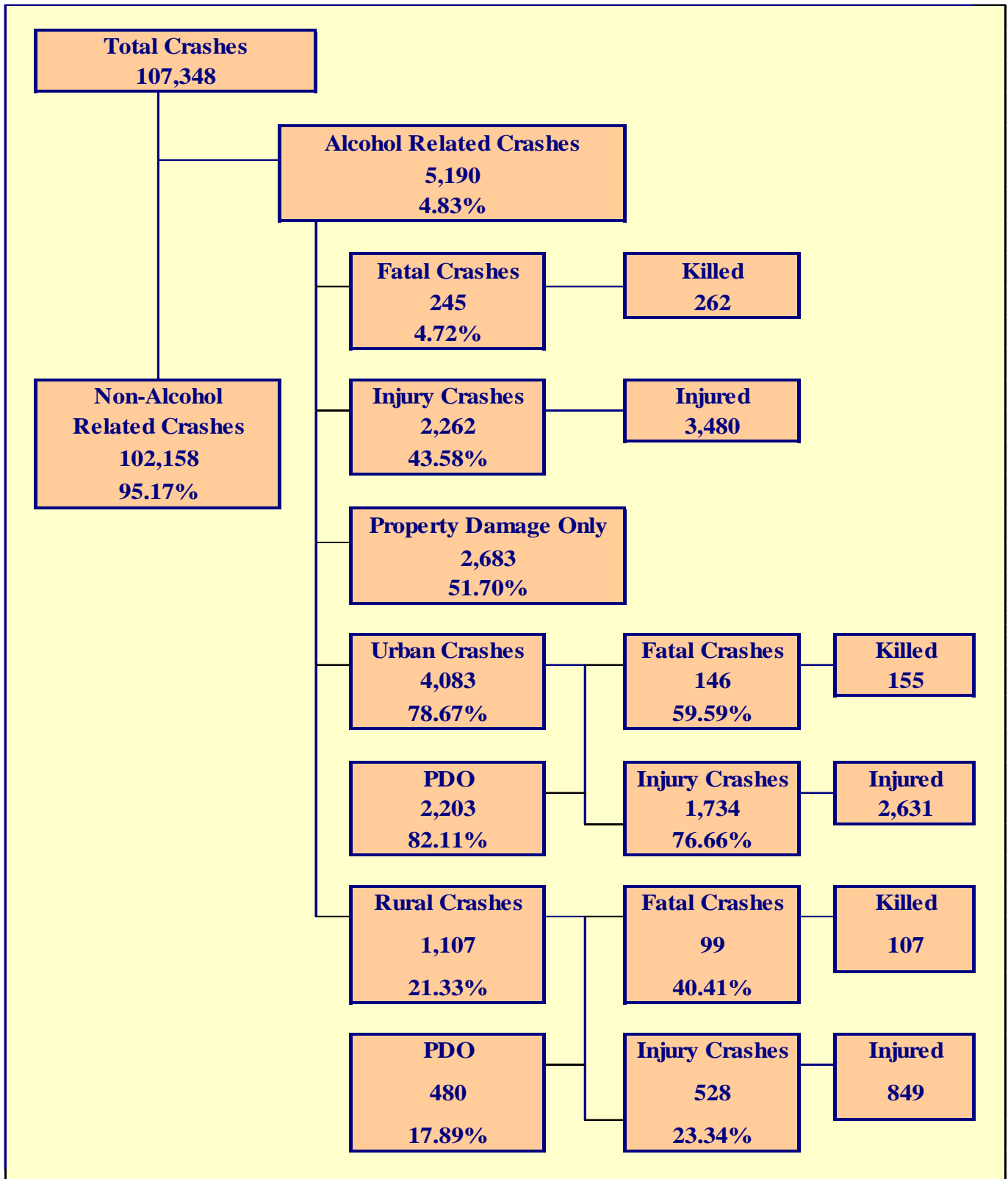
Type of Violation or Behavior	Number of Drivers							
	Total	Percent of Total	In Fatal Crashes	Percent of Fatal	In Injury Crashes	Percent of Injury	In PDO Crashes	Percent of PDO
No Improper Action	98,834	48.39%	441	37.22%	32,289	49.24%	66,104	48.08%
Speed too Fast for Conditions	34,819	17.05%	178	15.02%	11,531	17.58%	23,110	16.81%
Exceeded Lawful Speed	932	0.46%	39	3.29%	402	0.61%	491	0.36%
Failed to Yield Right-Of-Way	11,852	5.80%	69	5.82%	4,851	7.40%	6,932	5.04%
Followed Too Closely	5,087	2.49%	4	0.34%	1,396	2.13%	3,687	2.68%
Ran Stop Sign	1,084	0.53%	14	1.18%	475	0.72%	595	0.43%
Disregarded Traffic Signal	4,583	2.24%	34	2.87%	2,194	3.35%	2,355	1.71%
Made Improper Turn	5,617	2.75%	17	1.43%	1,650	2.52%	3,950	2.87%
Drove in Opposing Lane	1,236	0.61%	41	3.46%	497	0.76%	698	0.51%
Knowingly Operated with Faulty or Missing Equipment	250	0.12%	4	0.34%	82	0.13%	164	0.12%
Required Motorcycle Safety Equipment Not Used	30	0.01%	0	0.00%	18	0.03%	12	0.01%
Passed in No-Passing Zone	111	0.05%	1	0.08%	29	0.04%	81	0.06%
Unsafe Lane Change	5,910	2.89%	12	1.01%	900	1.37%	4,998	3.64%
Failed to Keep in Proper Lane	3,543	1.73%	55	4.64%	971	1.48%	2,517	1.83%
Disregarded Pavement Markings	223	0.11%	3	0.25%	57	0.09%	163	0.12%
Other Unsafe Passing	646	0.32%	3	0.25%	126	0.19%	517	0.38%
Inattention/Distraction	10,514	5.15%	20	1.69%	2,907	4.43%	7,587	5.52%
Electronic Communications Device	165	0.08%	3	0.25%	64	0.10%	98	0.07%
Other	5,896	2.89%	37	3.12%	1,799	2.74%	4,060	2.95%
Unknown	12,927	6.33%	210	17.72%	3,342	5.10%	9,375	6.82%
TOTAL	204,259	100.00%	1,185	100.00%	65,580	100.00%	137,494	100.00%

**Table 5 – 12
Driver Physical Condition**

Type of Condition	Number of Drivers							
	Total	Percent of Total	In Fatal Crashes	Percent of Fatal	In Injury Crashes	Percent of Injury	In PDO Crashes	Percent of PDO
No Apparent Influence	180,198	88.22%	643	54.26%	58,230	88.79%	121,325	88.24%
Had Been Drinking	4,961	2.43%	182	15.36%	2,108	3.21%	2,671	1.94%
Appeared to be Under the Influence of Drugs*	705	0.35%	47	3.97%	318	0.48%	340	0.25%
Medications	251	0.12%	6	0.51%	106	0.16%	139	0.10%
Illness	704	0.34%	6	0.51%	343	0.52%	355	0.26%
Physical Impairment	239	0.12%	1	0.08%	109	0.17%	129	0.09%
Fell Asleep or Fatigued	1,352	0.66%	5	0.42%	548	0.84%	799	0.58%
Other	1,090	0.53%	20	1.69%	338	0.52%	732	0.53%
Unknown	14,759	7.23%	275	23.21%	3,480	5.31%	11,004	8.00%
TOTAL	204,259	100.00%	1,185	100.00%	65,580	100.00%	137,494	100.00%
*Illegal drugs or narcotics								

Section 6

Alcohol Related Crashes



Section 6: – Alcohol Related Crashes

The statistics in the Alcohol Related section represent those crashes where the investigating officer indicated that a driver, pedestrian, or pedalcyclist had been drinking an alcoholic beverage and may or may not be substantiated by a blood or breath test. No assumption is to be made that the person was legally intoxicated (blood alcohol content of 0.08% or higher) at the time of the crash.

**Table 6 – 1
Economic Loss Due to Alcohol Related Crashes in Arizona for 2013**

Fatalities	\$376,808,400
Incapacitating Injuries	\$43,528,398
Non-Incapacitating Injuries	\$33,606,144
Possible Injuries	\$19,994,040
Property Damage Only	\$24,356,274
TOTAL	\$498,293,256

Refer to note on Page 4 for Economic Loss Estimates

**Table 6 – 2
Alcohol Related Crash History**

Year	Alcohol Related Crashes	Percent of all Crashes	Persons Killed	Percent of all Fatalities	Persons Injured	Percent of all Injuries
2009	5,905	5.51%	270	33.50%	4,185	8.24%
2010	5,583	5.22%	255	33.60%	3,801	7.53%
2011	5,602	5.39%	287	34.70%	3,714	7.45%
2012	5,460	5.25%	283	34.47%	3,755	7.50%
2013	5,190	4.83%	262	31.04%	3,480	6.92%

**Table 6 – 3
Manner of Collision in Alcohol Related Crashes**

Manner of Collision Type	Number of Crashes							
	Total	Percent of All Crashes	Fatal	Percent of Fatal Crashes	Injury	Percent of Injury Crashes	PDO	Percent of PDO Crashes
Angle	508	17.58%	11	7.80%	280	21.33%	217	15.12%
Left Turn	289	10.00%	4	2.84%	173	13.18%	112	7.80%
Rear End	1,126	38.98%	21	14.89%	460	35.03%	645	44.95%
Head-On	200	6.92%	13	9.22%	107	8.15%	80	5.57%
Sideswipe (same)	298	10.31%	5	3.55%	78	5.94%	215	14.98%
Sideswipe (opposite)	106	3.67%	2	1.42%	44	3.35%	60	4.18%
Rear to Side	18	0.62%	0	0.00%	4	0.30%	14	0.98%
Rear to Rear	10	0.35%	0	0.00%	5	0.38%	5	0.35%
Other	315	10.90%	83	58.87%	153	11.65%	79	5.51%
Unknown	19	0.66%	2	1.42%	9	0.69%	8	0.56%
TOTAL	2,889	100.00%	141	100.00%	1,313	100.00%	1,435	100.00%

Note: Includes only multi-vehicle alcohol related crashes

Section 6: – Alcohol Related Crashes

Table 6 – 4

Alcohol Related Crashes by First Harmful Event

First Harmful Event Type	Number of Crashes				Number of Persons	
	Total	Fatal	Injury	PDO	Killed	Injured
Collision with Motor Vehicle in Transport	1,694	60	751	883	74	1,435
Overturning	259	38	178	43	39	261
Collision with Pedestrian	181	68	103	10	68	115
Collision with Pedalcyclist	46	7	32	7	7	35
Collision with Animal	4	0	0	4	0	0
Collision with Fixed Object	1,611	66	620	925	68	810
Collision with Non-fixed Object*	282	2	71	209	2	86
Vehicle Fire or Explosion	2	0	0	2	0	0
Other Non-collision**	40	1	24	15	1	26
Unknown	1,071	3	483	585	3	712
TOTAL	5,190	245	2,262	2,683	262	3,480
*Includes Collision with Parked Vehicles, Trains, Railway Vehicles, and Work Zone Equipment						
**Includes Vehicle Immersion, Jackknife, and Cargo Loss or Shift						

Table 6 – 5

Alcohol Related Crashes by Vehicle Type

Motor Vehicle Type	Number of Vehicles				
	Total	Percent of Total	In Fatal Crashes	In Injury Crashes	In PDO Crashes
Passenger Cars (Sedans, Convertibles, etc.)	2,561	51.623%	69	1,004	1,488
Station Wagons	921	18.565%	28	399	494
Pickup Trucks	970	19.553%	41	404	525
Vans	32	0.645%	1	14	17
Truck Tractor (with or without Semi-Trailer)	7	0.141%	1	3	3
Concrete Mixer Trucks	0	0.000%	0	0	0
Dump Trucks	0	0.000%	0	0	0
Garbage Trucks	1	0.020%	1	0	0
Tanker Trucks	0	0.000%	0	0	0
Wrecker or Tow Trucks	0	0.000%	0	0	0
Other Truck Combinations	113	2.278%	4	45	64
School Bus	0	0.000%	0	0	0
Commercial or Non-Commercial Bus	0	0.000%	0	0	0
Motorcycle (two or three wheel)	200	4.031%	31	157	12
All Terrain Vehicle or Cycle	20	0.403%	2	15	3
Moped	0	0.000%	0	0	0
Recreational Vehicle	1	0.020%	0	1	0
Motor Home or House Car	0	0.000%	0	0	0
Fire Trucks	0	0.000%	0	0	0
Ambulances	0	0.000%	0	0	0
Other Types Of Vehicles	6	0.121%	1	5	0
Vehicle Type Unknown	129	2.600%	3	61	65
TOTAL	4,961	100.00%	182	2,108	2,671

Section 6: – Alcohol Related Crashes

Table 6 – 6
Lighting Conditions in Alcohol Related Crashes

Type of Lighting Conditions	Number of Crashes				Number of Persons	
	Total	Fatal	Injury	PDO	Killed	Injured
Daylight	1,508	59	711	738	65	1,107
Dawn	83	7	31	45	7	52
Dusk	136	7	55	74	8	93
Dark - Lighted	2,594	87	1,072	1,435	90	1,613
Dark - Not Lighted	817	65	381	371	72	588
Dark - Unknown Lighting	52	20	12	20	20	27
TOTAL	5,190	245	2,262	2,683	262	3,480

Table 6 – 7
Road Surface Conditions in Alcohol Related Crashes

Type of Road Surface Condition	Number of Drivers				Number of Persons	
	Total	In Fatal Crashes	In Injury Crashes	In PDO Crashes	Killed	Injured
Dry	4,634	153	1,988	2,493	211	3,257
Wet	214	3	78	133	7	132
Snow	13	0	3	10	0	3
Slush	0	0	0	0	0	0
Ice/Frost	6	0	3	3	0	9
Water (standing or moving)	0	0	0	0	0	0
Sand	6	2	3	1	2	4
Mud, Dirt, Gravel	48	3	24	21	3	42
Oil	0	0	0	0	0	1
Other	5	1	3	1	1	5
Unknown	35	20	6	9	38	27
TOTAL	4,961	182	2,108	2,671	262	3,480

Table 6 – 8
Gender of Drivers Involved in Alcohol Related Crashes

Gender of Driver	Number of Drivers							
	Total	Percent of Total	In Fatal Crashes	Percent of Fatal	In Injury Crashes	Percent of Injury	In PDO Crashes	Percent of PDO
Male	3,636	73.29%	143	78.57%	1,571	74.53%	1,922	71.96%
Female	1,293	26.06%	39	21.43%	527	25.00%	727	27.22%
Unknown	32	0.65%	0	0.00%	10	0.47%	22	0.82%
TOTAL	4,961	100.00%	182	100.00%	2,108	100.00%	2,671	100.00%

In total crashes across the state, 53.17% of the drivers were males. When alcohol was involved, males accounted for 73.29% of the drivers.

Section 6: – Alcohol Related Crashes

**Table 6 – 9
Driver Involvement by Age in Alcohol Related Crashes**

Driver Age Group	Number of Drivers							
	Total	Percent of Total	In Fatal Crashes	Percent of Fatal	In Injury Crashes	Percent of Injury	In PDO Crashes	Percent of PDO
15 & Under	8	0.16%	0	0.00%	5	0.24%	3	0.11%
16	14	0.28%	2	1.10%	7	0.33%	5	0.19%
17	43	0.87%	2	1.10%	20	0.95%	21	0.79%
18	90	1.81%	3	1.65%	44	2.09%	43	1.61%
19	133	2.68%	2	1.10%	44	2.09%	87	3.26%
20	145	2.92%	4	2.20%	63	2.99%	78	2.92%
21	242	4.88%	11	6.04%	81	3.84%	150	5.62%
22	231	4.66%	5	2.75%	94	4.46%	132	4.94%
23	217	4.37%	8	4.40%	105	4.98%	104	3.89%
24	216	4.35%	7	3.85%	82	3.89%	127	4.75%
25-34	1,446	29.15%	58	31.87%	627	29.74%	761	28.49%
35-44	896	18.06%	26	14.29%	389	18.45%	481	18.01%
45-54	698	14.07%	27	14.84%	309	14.66%	362	13.55%
55-64	377	7.60%	18	9.89%	158	7.50%	201	7.53%
65-74	107	2.16%	5	2.75%	51	2.42%	51	1.91%
75 & Older	30	0.60%	2	1.10%	7	0.33%	21	0.79%
Unknown	68	1.37%	2	1.10%	22	1.04%	44	1.65%
TOTAL	4,961	100.00%	182	100.00%	2,108	100.00%	2,671	100.00%

**Table 6 – 10
When Alcohol Related Crashes Occurred in 2013**

Time of Day	Total	Weekday	Weekend*
Daytime**	1,428	863	565
Nighttime	3,762	1,485	2,277
Total	5,190	2,348	2,842
*Weekend begins at 6:00 p.m. on Friday and continues through 6:00 a.m. Monday. All other times and days are considered Weekdays.			
**Daytime refers to the hours between 6:00 a.m. and 6:00 p.m.			

**Table 6 – 11
Safety Device Usage for Drinking Drivers**

Severity of Injury	Safety Device Not Used	Lap Belt	Lap & Shoulder Belt	Protective Helmet	Other	Unknown	Totals
No Injury	179	32	1,900	1	8	941	3,061
Unknown Injury	5	3	22	0	2	175	207
Possible Injury	95	9	261	7	1	190	563
Non-Incapacitating Injury	184	8	298	23	2	241	756
Incapacitating Injury	98	3	65	9	0	81	256
Fatal Injury	75	0	11	8	0	24	118
TOTALS	636	55	2,557	48	13	1,652	4,961

Section 6: – Alcohol Related Crashes

Table 6 – 12

Persons Killed and Injured in Alcohol Related Crashes

Age of Victim	Persons Killed			Persons Injured			
	Total	Male	Female	Total	Male	Female	Gender Unknown
0-4	5	3	2	46	17	29	0
5-9	4	3	1	62	27	35	0
10-14	2	2	0	64	31	33	0
15-19	9	6	3	316	178	138	0
20-24	38	28	10	626	408	218	0
25-34	69	50	19	897	623	274	0
35-44	37	26	11	573	358	215	0
45-54	49	41	8	447	277	170	0
55-64	36	28	8	265	181	84	0
65-74	9	7	2	91	56	35	0
75 & Older	4	3	1	29	14	15	0
Unknown	0	0	0	64	32	24	8
TOTAL	262	197	65	3,480	2,202	1,270	8

Table 6 – 13

Alcohol Related Crashes by County

County	Number of Crashes				Number of Persons	
	Total	Fatal	Injury	PDO	Killed	Injured
Apache	22	5	7	10	6	20
Cochise	56	4	18	34	5	26
Coconino	147	13	60	74	13	114
Gila	40	7	16	17	7	22
Graham	27	2	16	9	2	23
Greenlee	9	2	5	2	2	8
La Paz	13	3	2	8	3	2
Maricopa	3,291	111	1,401	1,779	121	2,123
Mohave	197	11	103	83	11	141
Navajo	69	11	34	24	11	80
Pima	756	41	317	398	43	488
Pinal	220	16	115	89	16	183
Santa Cruz	10	1	5	4	2	10
Yavapai	205	7	96	102	9	137
Yuma	128	11	67	50	11	103
TOTAL	5,190	245	2,262	2,683	262	3,480

Section 6: – Alcohol Related Crashes

Chart 6 – 1

All Alcohol Related Crashes vs. Fatal Alcohol Related Crashes by Day of Week

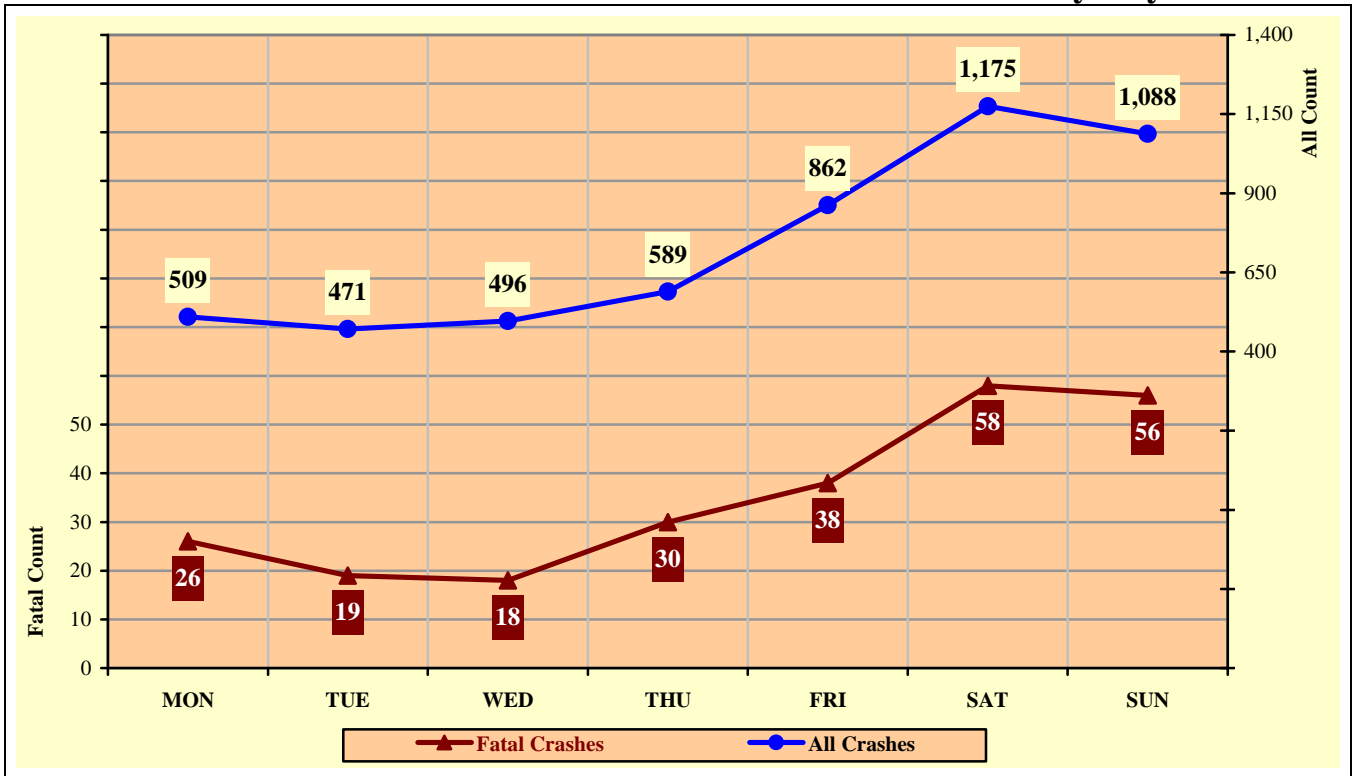
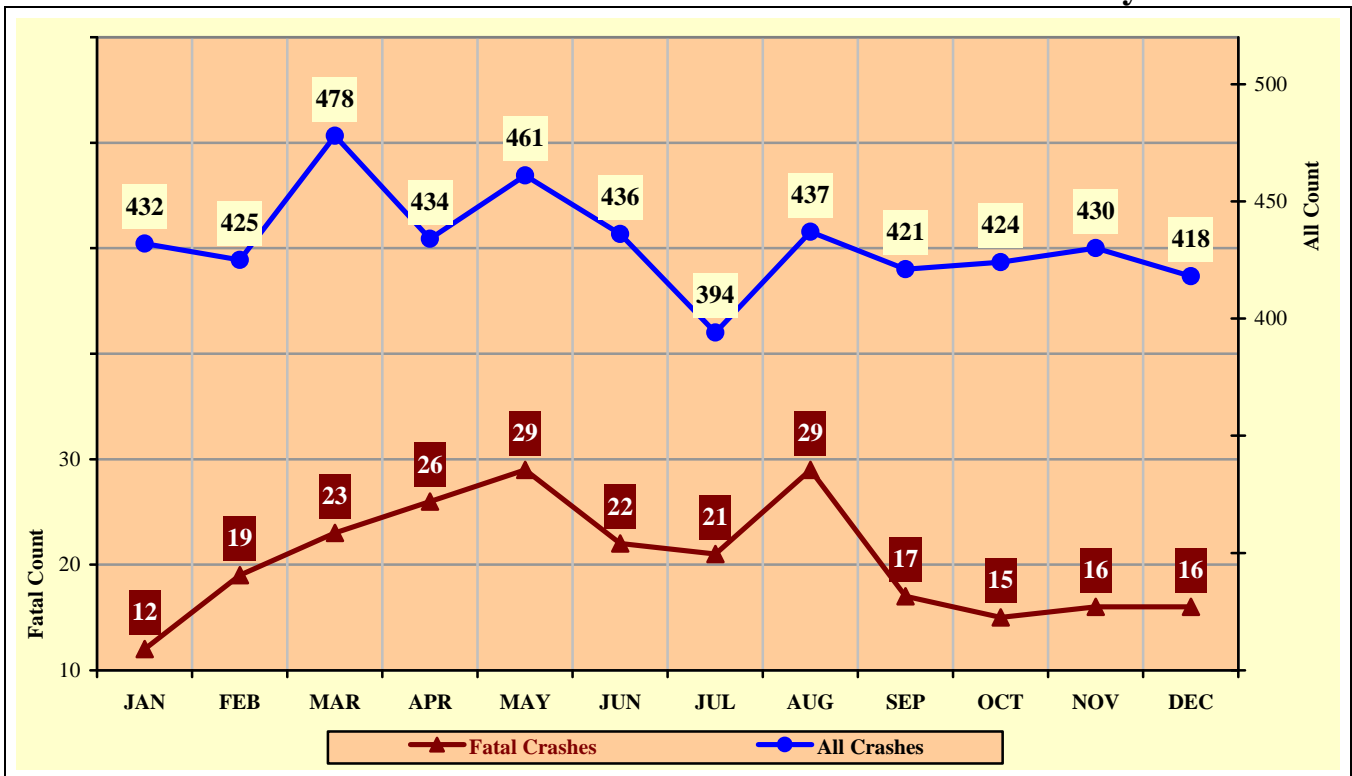


Chart 6 – 2

All Alcohol Related Crashes vs. Fatal Alcohol Related Crashes by Month



Section 6: – Alcohol Related Crashes

Chart 6 – 3

All Alcohol Related Crashes vs. Fatal Alcohol Related Crashes - Weekdays

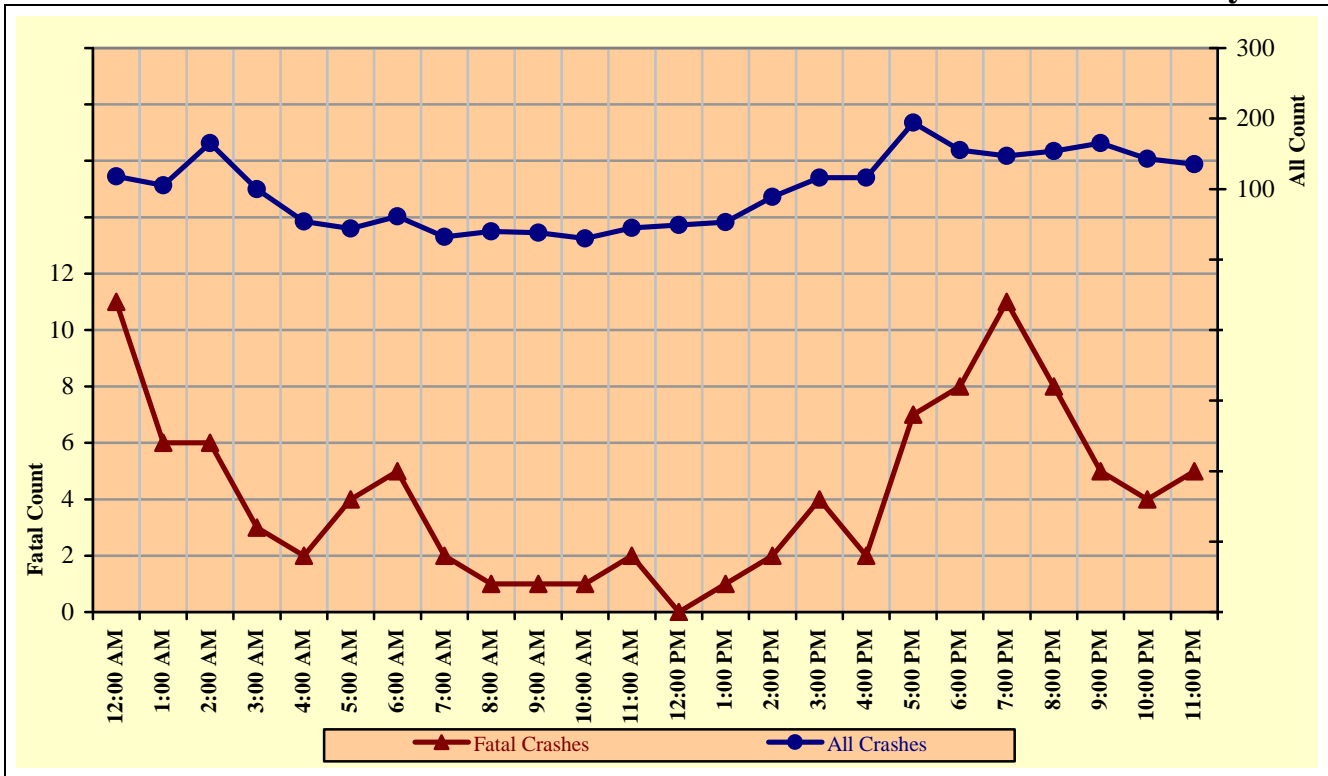
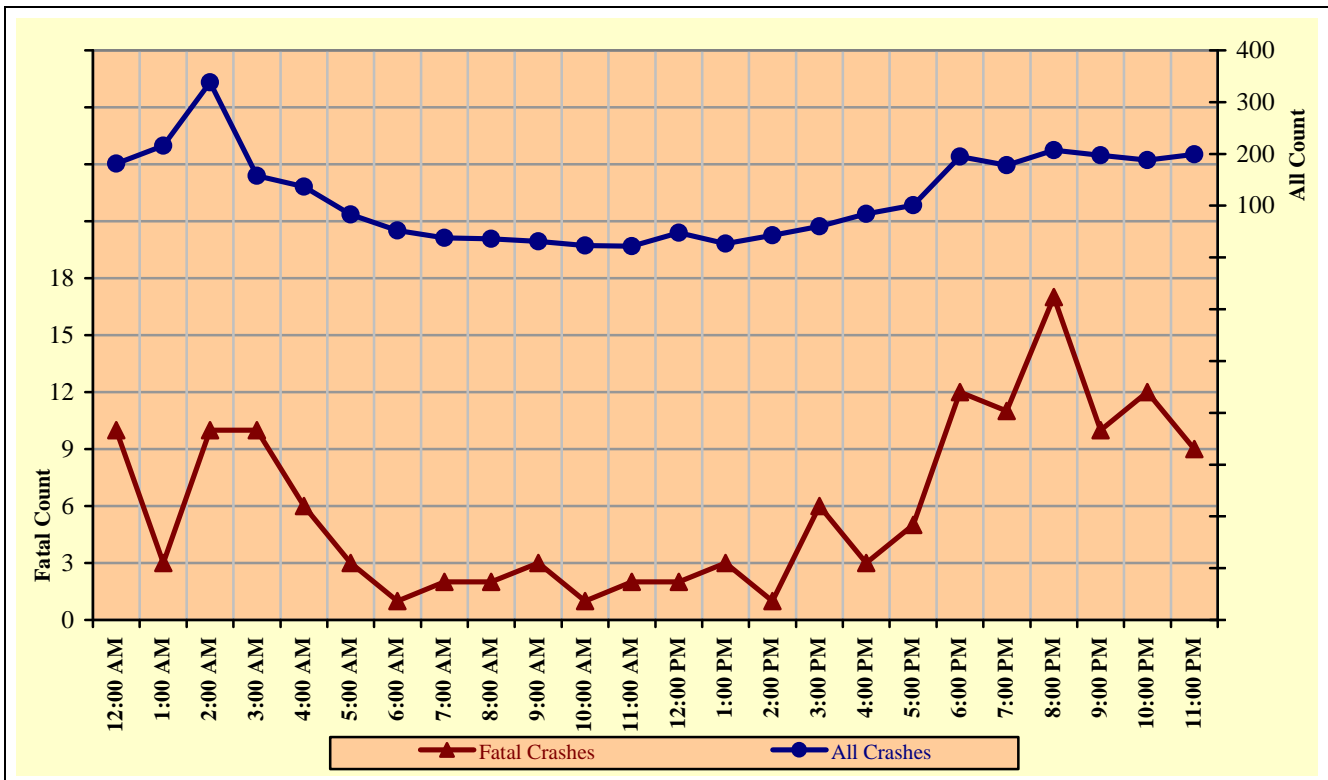


Chart 6 – 4

All Alcohol Related Crashes vs. Fatal Alcohol Related Crashes - Weekends



Section 6: – Alcohol Related Crashes

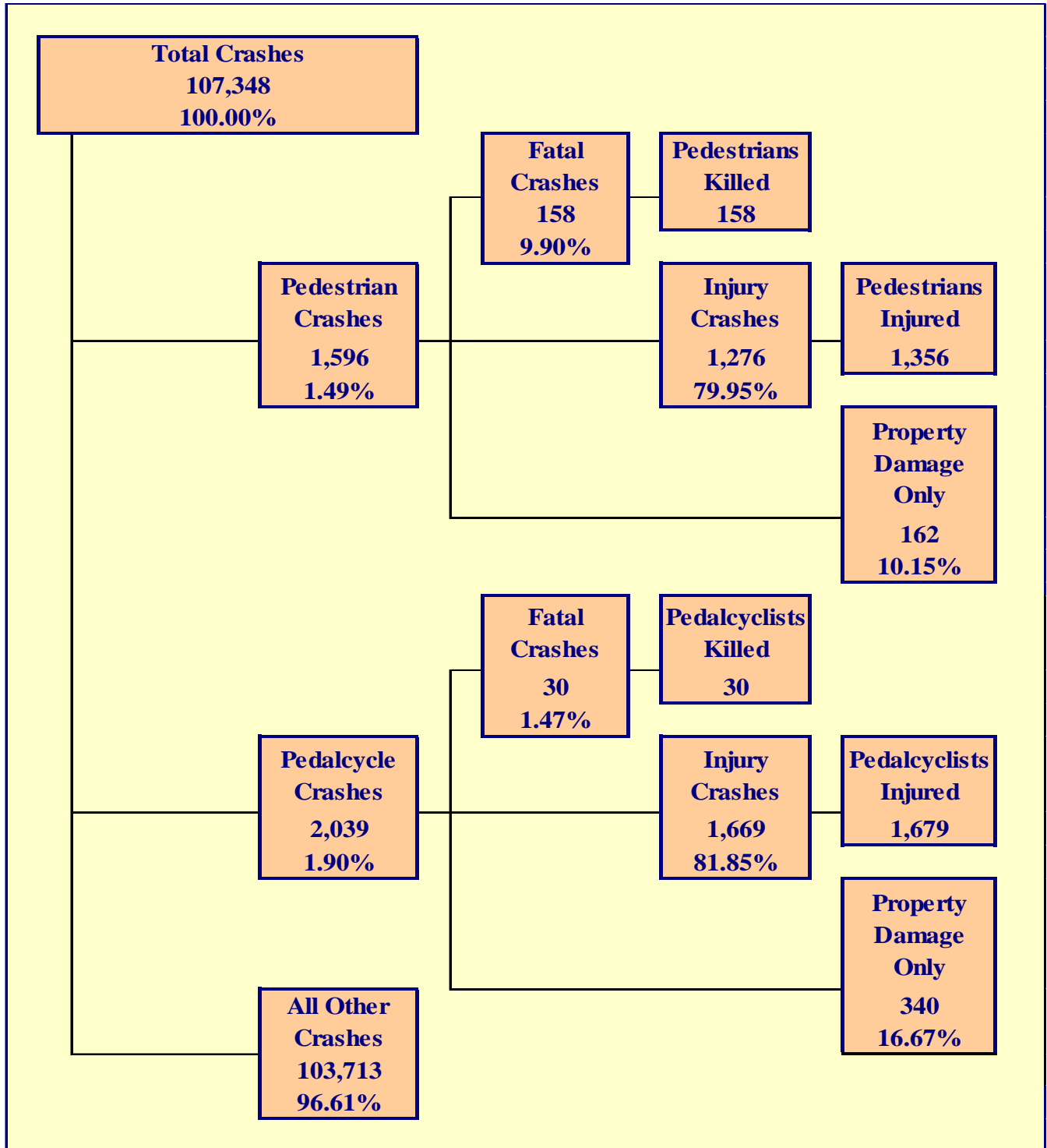
Table 6 – 14

Alcohol Related Crashes by Hour and Day of Week

Hour Beginning	Total Crashes		Monday		Tuesday		Wednesday		Thursday		Friday		Saturday		Sunday		Weekdays		Weekends	
	All	Fatal	All	Fatal	All	Fatal	All	Fatal	All	Fatal	All	Fatal	All	Fatal	All	Fatal	All	Fatal	All	Fatal
12:00 AM	299	21	38	2	21	2	18	0	32	4	47	5	64	6	79	2	118	11	181	10
1:00 AM	321	9	26	1	14	1	26	2	41	3	24	0	95	2	95	0	105	6	216	3
2:00 AM	503	16	41	0	24	1	38	1	34	1	69	3	138	5	159	5	165	6	338	10
3:00 AM	258	13	22	4	21	0	15	0	23	2	41	1	75	3	61	3	100	3	158	10
4:00 AM	191	8	20	1	11	1	12	1	16	0	15	0	57	1	60	4	54	2	137	6
5:00 AM	127	7	13	0	7	0	9	1	13	2	15	1	30	2	40	1	44	4	83	3
6:00 AM	113	6	20	2	7	1	4	0	9	0	21	2	17	1	35	0	61	5	52	1
7:00 AM	70	4	7	1	5	0	6	0	3	0	11	1	12	0	26	2	32	2	38	2
8:00 AM	76	3	4	1	10	0	10	0	3	0	13	0	18	0	18	2	40	1	36	2
9:00 AM	69	4	7	1	5	0	6	0	8	0	12	0	20	1	11	2	38	1	31	3
10:00 AM	53	2	11	0	2	0	7	0	4	1	6	0	10	0	13	1	30	1	23	1
11:00 AM	67	4	6	0	13	1	8	0	11	1	7	0	13	1	9	1	45	2	22	2
12:00 PM	97	2	15	0	16	0	1	0	9	0	8	0	14	1	34	1	49	0	48	2
1:00 PM	80	4	9	0	9	0	11	0	14	1	10	0	16	3	11	0	53	1	27	3
2:00 PM	132	3	21	0	17	0	20	0	12	2	19	0	23	1	20	0	89	2	43	1
3:00 PM	176	10	20	0	29	1	25	1	13	0	29	2	36	4	24	2	116	4	60	6
4:00 PM	200	5	22	1	25	0	17	1	24	0	28	0	45	2	39	1	116	2	84	3
5:00 PM	295	12	28	1	33	2	29	2	36	1	68	1	51	2	50	3	194	7	101	5
6:00 PM	350	20	32	3	40	3	40	1	43	1	61	3	73	4	61	5	155	8	195	12
7:00 PM	325	22	32	4	34	1	37	2	44	4	56	4	66	4	56	3	147	11	178	11
8:00 PM	361	25	34	1	30	2	40	3	50	2	83	6	74	4	50	7	154	8	207	17
9:00 PM	362	15	27	1	44	2	44	1	50	1	74	3	68	3	55	4	165	5	197	10
10:00 PM	331	16	31	1	26	1	36	0	50	2	71	5	74	3	43	4	143	4	188	12
11:00 PM	334	14	23	1	28	0	37	2	47	2	74	1	86	5	39	3	135	5	199	9
TOTAL	5,190	245	509	26	471	19	496	18	589	30	862	38	1,175	58	1,088	56	2,348	101	2,842	144

Crashes during Weekends accounted for 54.76% of all Alcohol Related crashes and 58.78% of Alcohol Related Fatal Crashes.

Crashes during Weekdays accounted for 45.24% of all Alcohol Related crashes and 41.22% of Alcohol Related Fatal Crashes.



Section 7: – Pedestrian and Pedalcyclist Crashes

Table 7 – 1

Pedestrians Killed and Injured By Age and Gender

Age Group	Pedestrians Killed			Pedestrians Injured			
	Total	Male	Female	Total	Male	Female	Gender Unknown
0-4	5	2	3	27	14	13	0
5-9	2	1	1	48	32	16	0
10-14	4	2	2	96	54	42	0
15-19	8	4	4	203	116	87	0
20-24	17	12	5	167	105	62	0
25-34	25	20	5	210	124	86	0
35-44	21	13	8	156	97	59	0
45-54	32	26	6	169	91	78	0
55-64	25	18	7	134	78	56	0
65-74	6	5	1	77	48	29	0
75 & Older	12	10	2	28	20	8	0
Unknown	1	1	0	41	20	9	12
TOTAL	158	114	44	1,356	799	545	12

Table 7 – 2

Pedestrian Crashes by Geographic Location

Category	Total	Urban	Percent of Total	Rural	Percent of Total
Total Crashes	1,596	1,413	88.53%	183	11.47%
Fatal Crashes	158	114	72.15%	44	27.85%
Injury Crashes	1,276	1,162	91.07%	114	8.93%
PDO Crashes	162	137	84.57%	25	15.43%
Pedestrians Killed	158	114	72.15%	44	27.85%
Pedestrians Injured	1,356	1,239	91.37%	117	8.63%

Table 7 – 3

Pedestrian Crash History

Year	Pedestrian Crashes	Percent of all Crashes	Pedestrians Killed	Percent of all Fatalities	Pedestrians Injured	Percent of all Injuries
2009	1,530	1.43%	122	15.14%	1,313	2.58%
2010	1,462	1.37%	154	20.29%	1,250	2.48%
2011	1,513	1.46%	154	18.62%	1,260	2.53%
2012	1,582	1.52%	131	15.96%	1,361	2.72%
2013	1,596	1.49%	158	18.72%	1,356	2.70%

Section 7: – Pedestrian and Pedalcyclist Crashes

Table 7 – 4

Pedestrians Killed by Age and Action

Pedestrian Action	Total	Age Group of Pedestrian											
		0-4	5-9	10-14	15-19	20-24	25-34	35-44	45-54	55-64	65-74	75 & Older	Unknown
Crossing Road	79	1	2	4	1	4	12	9	17	13	4	11	1
Walking With Traffic	12	0	0	0	1	2	1	3	3	2	0	0	0
Walking Against Traffic	8	0	0	0	0	1	1	0	2	2	1	1	0
Standing	11	0	0	0	0	0	2	3	3	2	1	0	0
Lying	4	0	0	0	0	1	0	2	1	0	0	0	0
Getting on/off Vehicle	1	0	0	0	0	0	0	0	0	1	0	0	0
Working on/pushing Veh	0	0	0	0	0	0	0	0	0	0	0	0	0
Working on Road	0	0	0	0	0	0	0	0	0	0	0	0	0
Other	11	1	0	0	2	1	2	1	1	3	0	0	0
Unknown	32	3	0	0	4	8	7	3	5	2	0	0	0
TOTAL	158	5	2	4	8	17	25	21	32	25	6	12	1

Table 7 – 5

Pedestrians Injured by Age and Action

Pedestrian Action	Total	Age Group of Pedestrian											
		0-4	5-9	10-14	15-19	20-24	25-34	35-44	45-54	55-64	65-74	75 & Older	Unknown
Crossing Road	870	15	35	66	132	117	129	90	102	91	48	22	23
Walking With Traffic	80	3	2	8	14	9	9	9	14	7	3	1	1
Walking Against Traffic	82	1	1	6	12	11	14	5	12	5	9	2	4
Standing	81	1	3	1	7	11	26	14	8	7	1	1	1
Lying	4	0	0	0	0	0	1	2	0	0	1	0	0
Getting on/off Vehicle	3	0	0	0	1	0	0	2	0	0	0	0	0
Working on/pushing Veh	5	0	0	0	0	0	2	1	2	0	0	0	0
Working on Road	4	0	0	0	0	0	1	3	0	0	0	0	0
Other	140	6	5	10	29	11	13	17	19	15	11	1	3
Unknown	87	1	2	5	8	8	15	13	12	9	4	1	9
TOTAL	1,356	27	48	96	203	167	210	156	169	134	77	28	41

Table 7 – 6

Pedestrian Physical Condition in Motor Vehicle Crashes

Type of Condition	Number of Pedestrians							
	Total	Percent of Total	In Fatal Crashes	Percent of Fatal	In Injury Crashes	Percent of Injury	In PDO Crashes	Percent of PDO
No Apparent Influence	1,193	70.18%	49	29.17%	1,029	75.50%	115	68.05%
Had Been Drinking	213	12.53%	65	38.69%	134	9.83%	14	8.28%
Appeared to be Under the Influence of Drugs*	11	0.65%	9	5.36%	2	0.15%	0	0.00%
Medications	1	0.06%	0	0.00%	1	0.07%	0	0.00%
Illness	5	0.29%	0	0.00%	4	0.29%	1	0.59%
Physical Impairment	13	0.76%	0	0.00%	9	0.66%	4	2.37%
Fell Asleep or Fatigued	0	0.00%	0	0.00%	0	0.00%	0	0.00%
Other	13	0.76%	0	0.00%	11	0.81%	2	1.18%
Unknown	251	14.76%	45	26.79%	173	12.69%	33	19.53%
TOTAL	1,700	100.00%	168	100.00%	1,363	100.00%	169	100.00%

*Illegal drugs or narcotics

Section 7: – Pedestrian and Pedalcyclist Crashes

Table 7 – 7

Lighting Conditions in Pedestrian Crashes

Type of Lighting Conditions	Number of Crashes			
	Total	Fatal	Injury	PDO
Daylight	845	30	724	91
Dawn	40	7	28	5
Dusk	47	8	35	4
Dark - Lighted	509	63	400	46
Dark - Not Lighted	123	28	81	14
Dark - Unknown Lighting	32	22	8	2
TOTAL	1,596	158	1,276	162

Table 7 – 8

Weather Conditions in Pedestrian Crashes

Type of Weather Conditions	Number of Crashes			
	Total	Fatal	Injury	PDO
Clear	1,397	114	1,137	146
Cloudy	104	9	87	8
Sleet/Hail	1	0	1	0
Rain	51	5	39	7
Snow	2	0	2	0
Severe Crosswinds	0	0	0	0
Blowing Sand, Soil, Dirt	0	0	0	0
Fog, Smog, Smoke	0	0	0	0
Blowing Snow	0	0	0	0
Other	1	1	0	0
Unknown	40	29	10	1
TOTAL	1,596	158	1,276	162

Table 7 – 9

Pedalcyclists Killed and Injured by Age and Gender

Age Group	Pedalcyclists Killed			Pedalcyclists Injured			
	Total	Male	Female	Total	Male	Female	Gender Unknown
0-4	0	0	0	4	3	1	0
5-9	3	2	1	37	31	6	0
10-14	0	0	0	132	106	26	0
15-19	1	1	0	246	186	60	0
20-24	1	1	0	249	187	62	0
25-34	0	0	0	285	180	105	0
35-44	2	2	0	201	157	44	0
45-54	7	5	2	269	214	55	0
55-64	7	7	0	149	128	21	0
65-74	7	6	1	53	43	10	0
75 & Older	2	2	0	18	15	3	0
Unknown	0	0	0	36	23	8	5
TOTAL	30	26	4	1,679	1,273	401	5

Section 7: – Pedestrian and Pedalcyclist Crashes

Table 7 – 10

Pedalcycle Crashes by Geographic Location

Category	Total	Urban	Percent of Total	Rural	Percent of Total
Total Crashes	2,039	1,858	91.12%	181	8.88%
Fatal Crashes	30	21	70.00%	9	30.00%
Injury Crashes	1,669	1,534	91.91%	135	8.09%
PDO Crashes	340	303	89.12%	37	10.88%
Pedalcyclists Killed	30	21	70.00%	9	30.00%
Pedalcyclists Injured	1,679	1,543	91.90%	136	8.10%

Table 7 – 11

Pedalcycle Crash History

Year	Pedalcycle Crashes	Percent of all Crashes	Pedalcyclists Killed	Percent of all Fatalities	Pedalcyclists Injured	Percent of all Injuries
2009	2,002	1.87%	25	3.10%	1,650	3.25%
2010	1,929	1.80%	19	2.50%	1,596	3.16%
2011	1,924	1.85%	23	2.78%	1,621	3.25%
2012	2,146	2.07%	18	2.19%	1,766	3.53%
2013	2,039	1.90%	30	3.55%	1,679	3.34%

Table 7 – 12

Lighting Conditions in Pedalcyclist Crashes

Type of Lighting Conditions	Number of Crashes			
	Total	Fatal	Injury	PDO
Daylight	1,554	11	1,295	248
Dawn	36	2	23	11
Dusk	62	6	43	13
Dark - Lighted	327	7	265	55
Dark - Not Lighted	48	1	35	12
Dark - Unknown Lighting	12	3	8	1
TOTAL	2,039	30	1,669	340

Table 7 – 13

Weather Conditions in Pedalcyclist Crashes

Type of Weather Conditions	Number of Crashes			
	Total	Fatal	Injury	PDO
Clear	1,838	22	1,508	308
Cloudy	134	2	112	20
Sleet/Hail	1	0	1	0
Rain	37	0	28	9
Snow	0	0	0	0
Severe Crosswinds	1	0	0	1
Blowing Sand, Soil, Dirt	2	0	2	0
Fog, Smog, Smoke	0	0	0	0
Blowing Snow	0	0	0	0
Other	1	0	0	1
Unknown	25	6	18	1
TOTAL	2,039	30	1,669	340

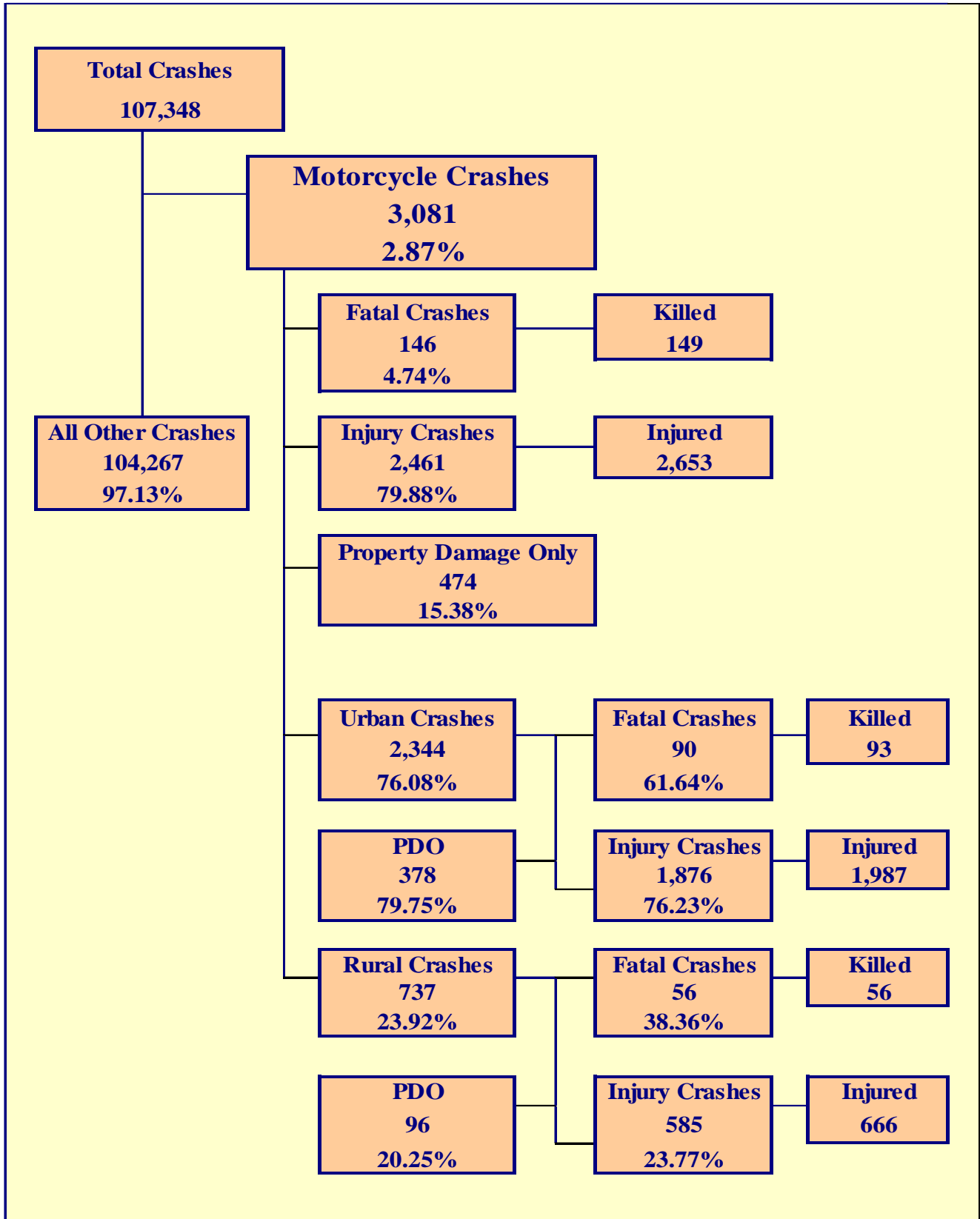
Section 7: – Pedestrian and Pedalcyclist Crashes

Table 7 – 14
Pedestrian Crashes by County

County	Number of Crashes				Number of Pedestrians	
	Total	Fatal	Injury	PDO	Killed	Injured
Apache	6	5	1	0	5	1
Cochise	10	0	10	0	0	10
Coconino	41	7	27	7	7	29
Gila	7	4	3	0	4	3
Graham	0	0	0	0	0	0
Greenlee	2	1	1	0	1	1
La Paz	0	0	0	0	0	0
Maricopa	1,109	87	930	92	87	1,002
Mohave	42	8	32	2	8	31
Navajo	15	7	7	1	7	7
Pima	248	25	180	43	25	184
Pinal	48	4	34	10	4	34
Santa Cruz	4	1	2	1	1	2
Yavapai	25	2	18	5	2	19
Yuma	39	7	31	1	7	33
TOTAL	1,596	158	1,276	162	158	1,356

Table 7 – 15
Pedalcyclist Crashes by County

County	Number of Crashes				Number of Pedalcyclists	
	Total	Fatal	Injury	PDO	Killed	Injured
Apache	0	0	0	0	0	0
Cochise	24	0	21	3	0	21
Coconino	77	0	56	21	0	56
Gila	7	0	5	2	0	5
Graham	1	1	0	0	1	0
Greenlee	1	0	1	0	0	1
La Paz	3	0	3	0	0	3
Maricopa	1,451	19	1,210	222	19	1,215
Mohave	31	2	25	4	2	26
Navajo	8	1	5	2	1	5
Pima	318	5	251	62	5	253
Pinal	58	2	43	13	2	44
Santa Cruz	2	0	2	0	0	2
Yavapai	29	0	21	8	0	21
Yuma	29	0	26	3	0	27
TOTAL	2,039	30	1,669	340	30	1,679



Section 8: – Motorcycle (MC) Crashes

Chart 8 – 1
MC Fatalities by Year

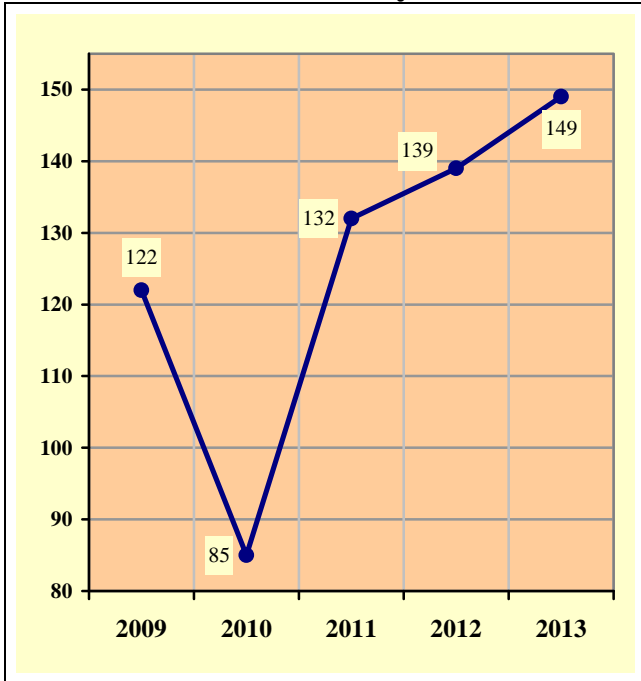
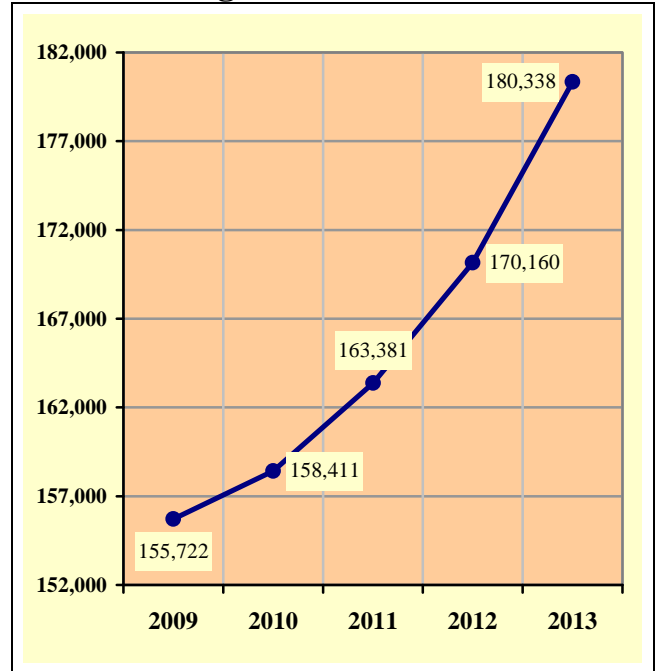


Chart 8 – 2
MC Registrations in Arizona



Total Point-in-Time of Registered Motorcycles at the end of
Calendar year 2013.
(Source: MVD - MV988 MV630419 Currently Registered Vehicles by County
Listing (motorcycle sub category), reports dated 12/31/13.)

Chart 8 – 3
Fatality Rate per Registered MC

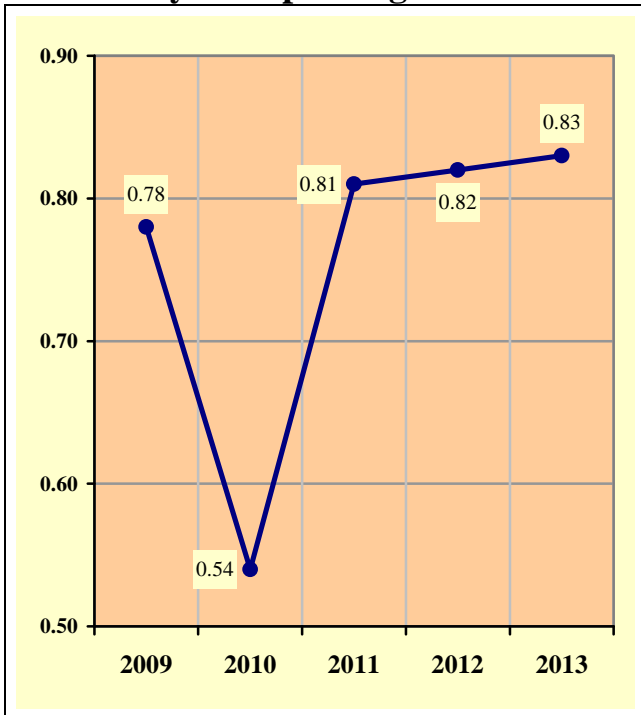
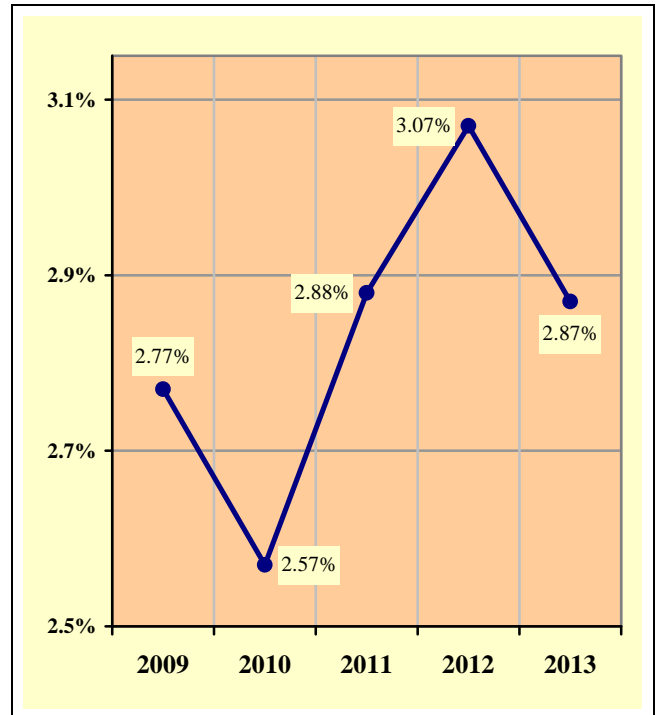


Chart 8 – 4
Percent of MC Crashes to All Crashes



Section 8: – Motorcycle (MC) Crashes

**Table 8 – 1
MC Crashes by First Harmful Event**

First Harmful Event Type	Number of Crashes			
	Total	Fatal	Injury	PDO
Collision with Motor Vehicle in Transport	1,350	85	966	299
Overturning	499	25	443	31
Collision with Pedestrian	10	0	10	0
Collision with Pedalcyclist	7	0	7	0
Collision with Animal	31	1	26	4
Collision with Fixed Object	319	33	257	29
Collision with Non-fixed Object*	62	1	37	24
Vehicle Fire or Explosion	2	0	0	2
Other Non-collision**	172	0	161	11
Unknown	629	1	554	74
TOTAL	3,081	146	2,461	474
*Includes Collision with Parked Vehicles, Trains, Railway Vehicles, and Work Zone Equipment				
**Includes Vehicle Immersion, Jackknife, and Cargo Loss or Shift				

**Table 8 – 2
Lighting Conditions in MC Crashes**

Type of Lighting Conditions	Number of Crashes			
	Total	Fatal	Injury	PDO
Daylight	2,151	85	1,717	349
Dawn	42	4	36	2
Dusk	110	4	90	16
Dark - Lighted	587	39	466	82
Dark - Not Lighted	168	10	137	21
Dark - Unknown Lighting	23	4	15	4
TOTAL	3,081	146	2,461	474

**Table 8 – 3
Road Surface Conditions in MC Crashes**

Type of Road Surface Condition	Number of Operators			
	Total	In Fatal Crashes	In Injury Crashes	In PDO Crashes
Dry	2,980	142	2,397	441
Wet	79	1	59	19
Snow	1	0	1	0
Slush	0	0	0	0
Ice/Frost	3	0	3	0
Water (standing or moving)	4	0	2	2
Sand	5	0	5	0
Mud, Dirt, Gravel	31	1	27	3
Oil	6	0	5	1
Other	3	0	3	0
Unknown	41	10	17	14
TOTAL	3,153	154	2,519	480

Section 8: – Motorcycle (MC) Crashes

Table 8 – 4

MC Crashes by Geographic Location

Category	Total	Urban	Percent of Total	Rural	Percent of Total
Total Crashes	3,081	2,344	76.08%	737	23.92%
Fatal Crashes	146	90	61.64%	56	38.36%
Injury Crashes	2,461	1,876	76.23%	585	23.77%
PDO Crashes	474	378	79.75%	96	20.25%
Persons Killed	149	93	62.42%	56	37.58%
Persons Injured	2,653	1,987	74.90%	666	25.10%

Table 8 – 5

Operator Involvement by Age in MC Crashes

Operator Age Group	Number of Operators							
	Total	Percent of Total	In Fatal Crashes	Percent of Fatal	In Injury Crashes	Percent of Injury	In PDO Crashes	Percent of PDO
15 & Under	17	0.54%	2	1.30%	13	0.52%	2	0.42%
16	8	0.25%	0	0.00%	7	0.28%	1	0.21%
17	18	0.57%	1	0.65%	15	0.60%	2	0.42%
18	59	1.87%	2	1.30%	50	1.98%	7	1.46%
19	88	2.79%	2	1.30%	71	2.82%	15	3.13%
20	76	2.41%	7	4.55%	56	2.22%	13	2.71%
21	107	3.39%	3	1.95%	92	3.65%	12	2.50%
22	86	2.73%	3	1.95%	67	2.66%	16	3.33%
23	109	3.46%	8	5.19%	92	3.65%	9	1.88%
24	92	2.92%	2	1.30%	78	3.10%	12	2.50%
25-34	659	20.90%	19	12.34%	544	21.60%	96	20.00%
35-44	522	16.56%	27	17.53%	420	16.67%	75	15.63%
45-54	576	18.27%	29	18.83%	474	18.82%	73	15.21%
55-64	436	13.83%	32	20.78%	346	13.74%	58	12.08%
65-74	195	6.18%	13	8.44%	149	5.92%	33	6.88%
75 & Older	27	0.86%	3	1.95%	21	0.83%	3	0.63%
Unknown	78	2.47%	1	0.65%	24	0.95%	53	11.04%
TOTAL	3,153	100.00%	154	100.00%	2,519	100.00%	480	100.00%

Table 8 – 6

MC Operator Physical Condition

Type of Condition	Number of Operators							
	Total	Percent of Total	In Fatal Crashes	Percent of Fatal	In Injury Crashes	Percent of Injury	In PDO Crashes	Percent of PDO
No Apparent Influence	2,662	84.43%	67	43.51%	2,186	86.78%	409	85.21%
Had Been Drinking	200	6.34%	31	20.13%	157	6.23%	12	2.50%
Appeared to be Under the Influence of Drugs*	16	0.51%	9	5.84%	7	0.28%	0	0.00%
Medications	5	0.16%	0	0.00%	5	0.20%	0	0.00%
Illness	9	0.29%	0	0.00%	7	0.28%	2	0.42%
Physical Impairment	7	0.22%	0	0.00%	5	0.20%	2	0.42%
Fell Asleep or Fatigued	2	0.06%	0	0.00%	2	0.08%	0	0.00%
Other	17	0.54%	1	0.65%	12	0.48%	4	0.83%
Unknown	235	7.45%	46	29.87%	138	5.48%	51	10.63%
TOTAL	3,153	100.00%	154	100.00%	2,519	100.00%	480	100.00%

*Illegal drugs or narcotics

Section 8: – Motorcycle (MC) Crashes

Table 8 – 7

MC Operators Involved in Fatal Crashes by License Status

License Status	2011		2012		2013	
	Number of Operators	Percent of Total	Number of Operators	Percent of Total	Number of Operators	Percent of Total
No license	4	2.90%	6	4.14%	5	3.38%
Invalid	23	16.67%	25	17.24%	26	17.57%
Valid	109	78.99%	111	76.55%	112	75.68%
Unknown	2	1.45%	3	2.07%	5	3.38%
TOTALS	138	100.00%	145	100.00%	148	100.00%
Note: Includes only motorcycle operators involved in fatal crashes						
Source: FARS Data Queries (http://www-fars.nhtsa.dot.gov)						

Table 8 – 8

MC Operator's Helmet Use

Severity of Injury	Helmet Used	Percent of Total	Helmet Not Used	Percent of Total	Unknown	Percent of Total	Total	Percent of Total
No Injury	206	13.63%	83	10.10%	197	24.02%	486	15.41%
Unknown Injury	13	0.86%	5	0.61%	42	5.12%	60	1.90%
Possible Injury	243	16.08%	118	14.36%	164	20.00%	525	16.65%
Non-Incapacitating Injury	678	44.87%	331	40.27%	284	34.63%	1,293	41.01%
Incapacitating Injury	314	20.78%	213	25.91%	121	14.76%	648	20.55%
Fatal Injury	57	3.77%	72	8.76%	12	1.46%	141	4.47%
TOTALS	1,511	100.00%	822	100.00%	820	100.00%	3,153	100.00%

Table 8 – 9

MC Passenger's Helmet Use

Severity of Injury	Helmet Used	Percent of Total	Helmet Not Used	Percent of Total	Unknown	Percent of Total	Total	Percent of Total
No Injury	16	17.98%	7	7.45%	23	37.70%	46	18.85%
Unknown Injury	0	0.00%	0	0.00%	3	4.92%	3	1.23%
Possible Injury	14	15.73%	13	13.83%	6	9.84%	33	13.52%
Non-Incapacitating Injury	36	40.45%	40	42.55%	19	31.15%	95	38.93%
Incapacitating Injury	20	22.47%	30	31.91%	9	14.75%	59	24.18%
Fatal Injury	3	3.37%	4	4.26%	1	1.64%	8	3.28%
TOTALS	89	100.00%	94	100.00%	61	100.00%	244	100.00%

Section 8: – Motorcycle (MC) Crashes

Table 8 – 10

MC Operators and Passengers Killed and Injured

Age of Victim	Persons Killed			Persons Injured			
	Total	Male	Female	Total	Male	Female	Gender Unknown
0-4	0	0	0	1	0	1	0
5-9	0	0	0	6	4	2	0
10-14	1	1	0	13	8	5	0
15-19	6	6	0	158	142	16	0
20-24	21	20	1	408	359	49	0
25-34	20	16	4	569	501	68	0
35-44	27	23	4	442	382	60	0
45-54	28	26	2	502	420	82	0
55-64	29	29	0	366	310	56	0
65-74	14	13	1	147	140	7	0
75 & Older	3	3	0	21	21	0	0
Unknown	0	0	0	20	16	3	1
TOTAL	149	137	12	2,653	2,303	349	1

Table 8 – 11

MC Operator Violations

Type of Violation or Behavior	Number of Operators							
	Total	Percent of Total	In Fatal Crashes	Percent of Fatal	In Injury Crashes	Percent of Injury	In PDO Crashes	Percent of PDO
No Improper Action	1,478	46.86%	49	31.82%	1,190	47.22%	239	49.79%
Speed too Fast for Conditions	734	23.27%	36	23.38%	609	24.17%	89	18.54%
Exceeded Lawful Speed	54	1.71%	10	6.49%	39	1.55%	5	1.04%
Failed to Yield Right-Of-Way	54	1.71%	2	1.30%	36	1.43%	16	3.33%
Followed Too Closely	89	2.82%	2	1.30%	74	2.94%	13	2.71%
Ran Stop Sign	14	0.44%	2	1.30%	10	0.40%	2	0.42%
Disregarded Traffic Signal	30	0.95%	2	1.30%	24	0.95%	4	0.83%
Made Improper Turn	38	1.20%	1	0.65%	30	1.19%	7	1.46%
Drove in Opposing Lane	22	0.70%	5	3.25%	13	0.52%	4	0.83%
Knowingly Operated with Faulty or Missing Equipment	12	0.38%	3	1.95%	7	0.28%	2	0.42%
Required Motorcycle Safety Equipment Not Used	5	0.16%	0	0.00%	5	0.20%	0	0.00%
Passed in No-Passing Zone	13	0.41%	1	0.65%	10	0.40%	2	0.42%
Unsafe Lane Change	55	1.74%	3	1.95%	40	1.59%	12	2.50%
Failed to Keep in Proper Lane	69	2.19%	6	3.90%	54	2.14%	9	1.88%
Disregarded Pavement Markings	6	0.19%	2	1.30%	3	0.12%	1	0.21%
Other Unsafe Passing	29	0.92%	2	1.30%	24	0.95%	3	0.63%
Inattention/Distraction	114	3.61%	1	0.65%	95	3.77%	18	3.75%
Electronic Communications Device	1	0.03%	0	0.00%	1	0.04%	0	0.00%
Other	120	3.80%	2	1.30%	109	4.33%	9	1.88%
Unknown	217	6.88%	25	16.23%	147	5.83%	45	9.38%
TOTAL	3,154	100.00%	154	100.00%	2,520	100.00%	480	100.00%

Section 8: – Motorcycle (MC) Crashes

Chart 8 – 5

All MC Crashes vs. Fatal MC Crashes by Time of Day - Weekdays

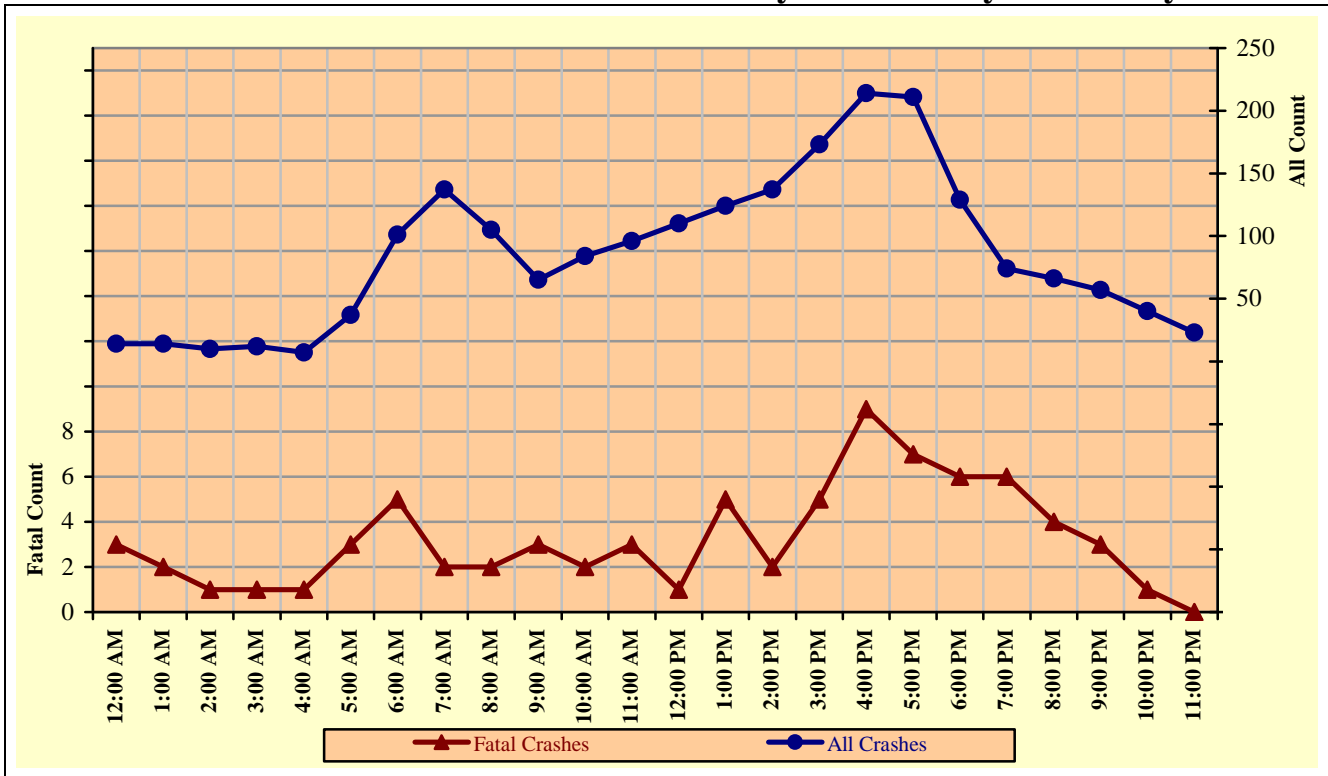
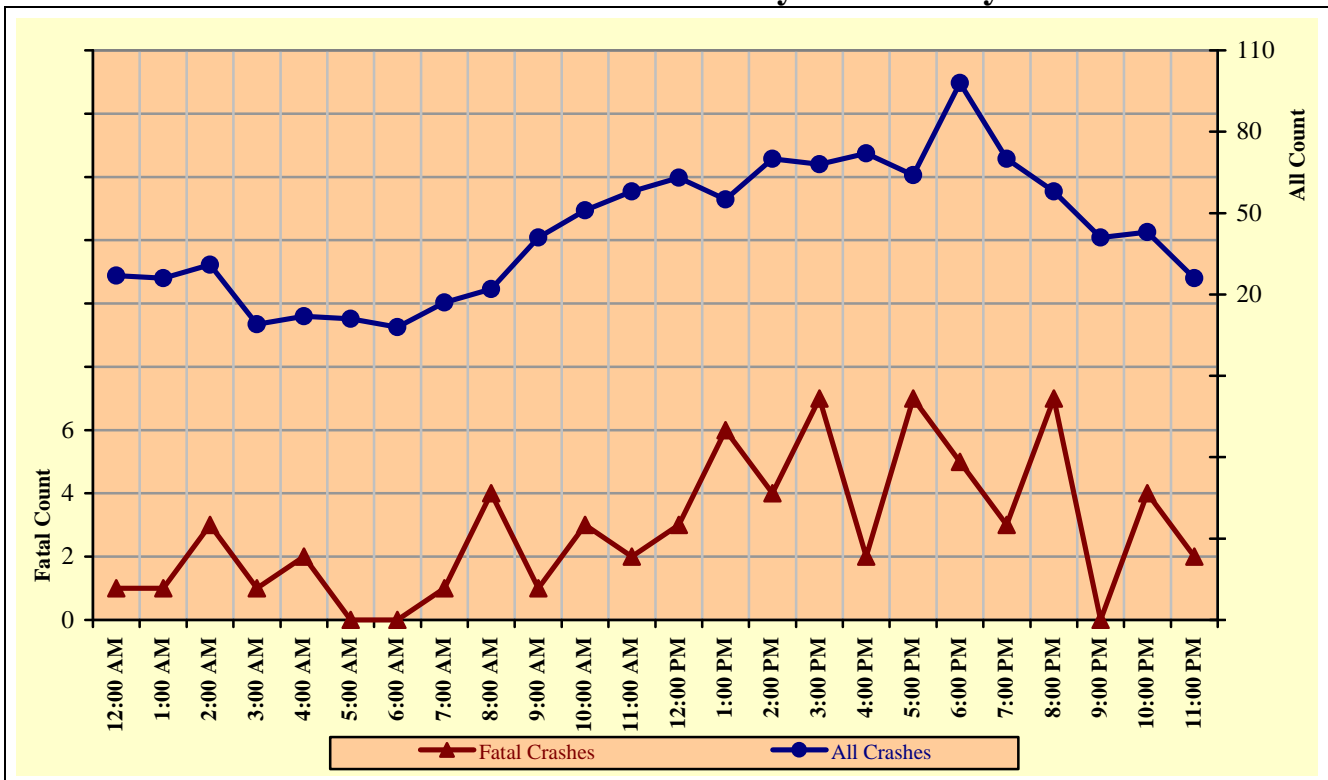


Chart 8 – 6

All MC Crashes vs. Fatal MC Crashes by Time of Day - Weekends



Section 8: – Motorcycle (MC) Crashes

Chart 8 – 7
All MC Crashes vs. Fatal MC Crashes by Day of Week

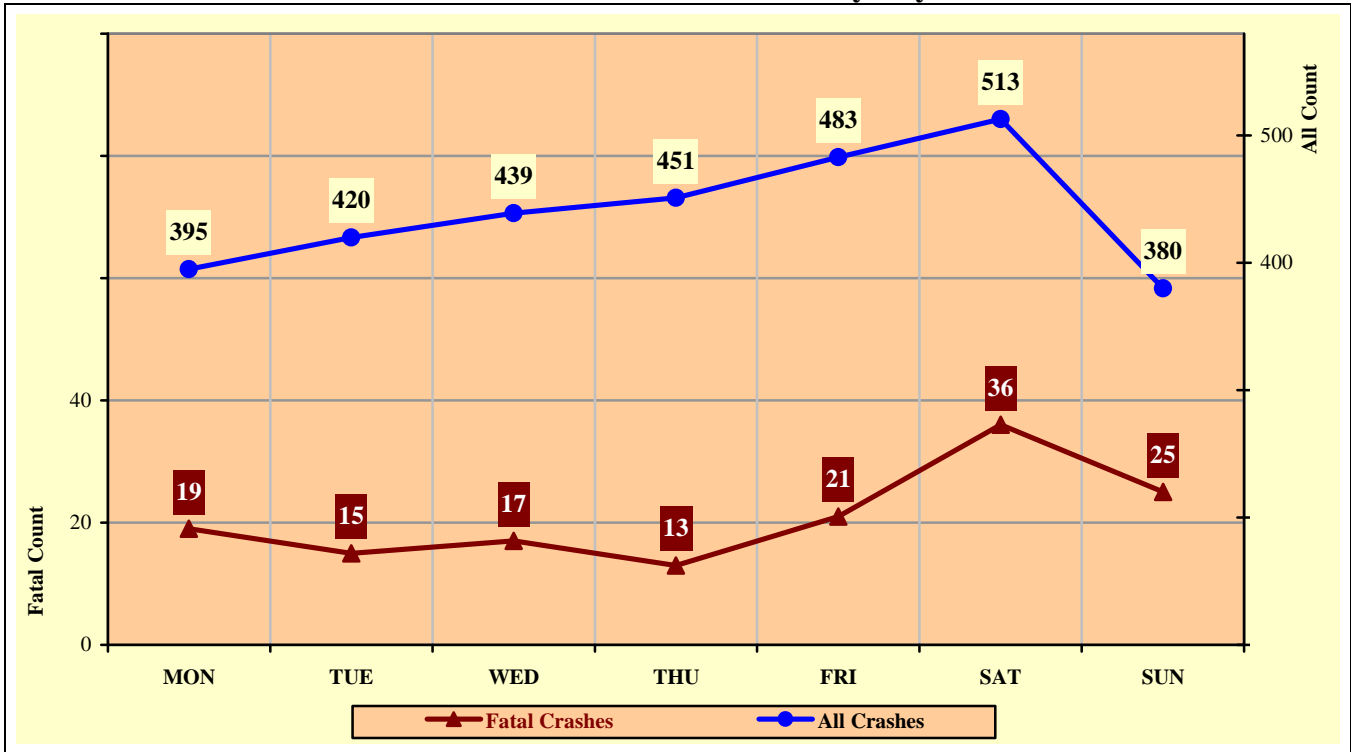
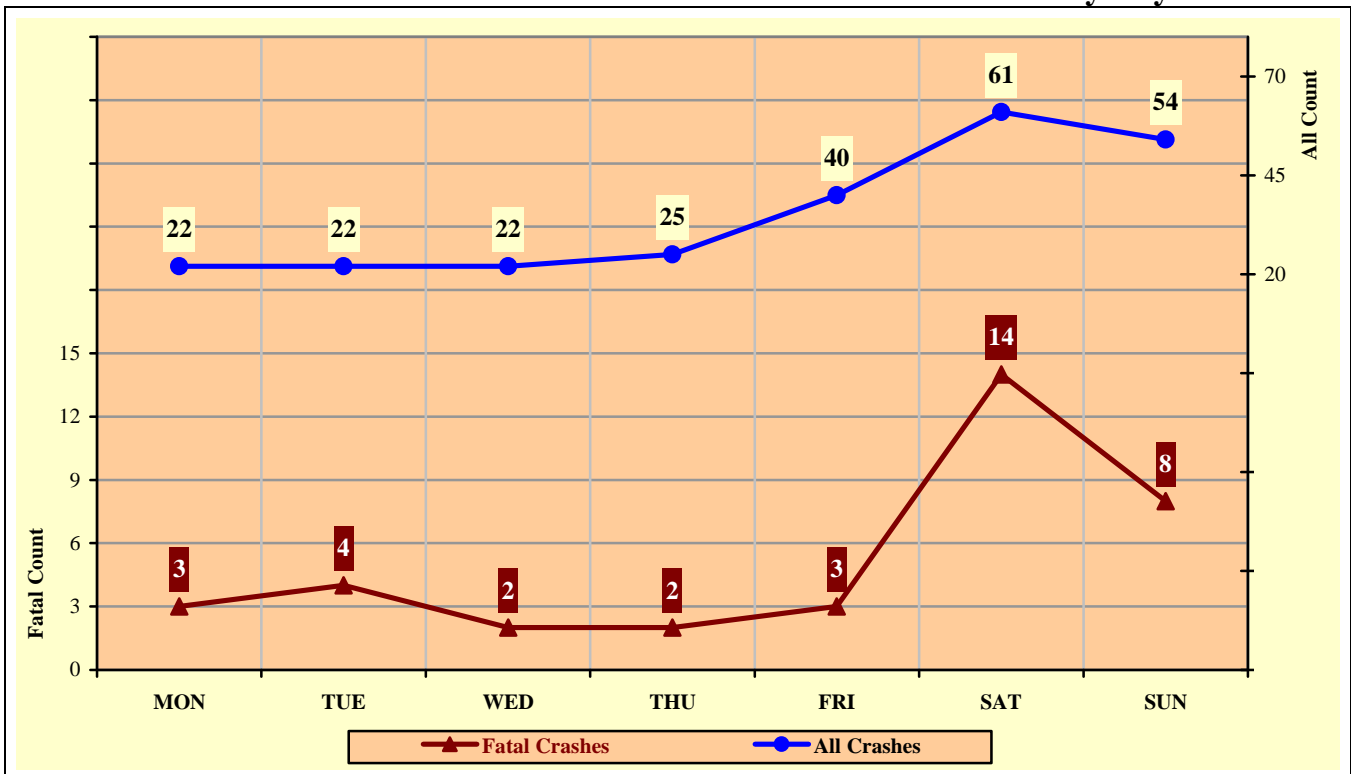


Chart 8 – 8
Alcohol Related MC Crashes vs. Fatal Alcohol Related MC Crashes by Day of Week



Section 8: – Motorcycle (MC) Crashes

Table 8 – 12
MC Crashes by Hour and Day of Week

Hour Beginning	Total Crashes		Monday		Tuesday		Wednesday		Thursday		Friday		Saturday		Sunday		Weekdays		Weekends	
	All	Fatal	All	Fatal	All	Fatal	All	Fatal	All	Fatal	All	Fatal	All	Fatal	All	Fatal	All	Fatal	All	Fatal
12:00 AM	41	4	11	0	4	1	2	1	6	1	2	0	7	1	9	0	14	3	27	1
1:00 AM	40	3	2	1	3	0	1	0	4	1	6	1	8	0	16	0	14	2	26	1
2:00 AM	41	4	6	0	2	1	3	0	1	0	4	0	13	1	12	2	10	1	31	3
3:00 AM	21	2	1	1	2	0	1	0	2	1	7	0	3	0	5	0	12	1	9	1
4:00 AM	19	3	3	0	1	0	3	0	3	1	0	0	5	2	4	0	7	1	12	2
5:00 AM	48	3	9	0	11	2	12	1	3	0	11	0	1	0	1	0	37	3	11	0
6:00 AM	109	5	14	1	18	1	18	1	30	0	21	2	8	0	0	0	101	5	8	0
7:00 AM	154	3	38	1	29	1	25	0	23	0	22	0	12	0	5	1	137	2	17	1
8:00 AM	127	6	19	0	24	1	24	0	14	1	24	0	13	2	9	2	105	2	22	4
9:00 AM	106	4	9	2	17	0	11	1	12	0	16	0	17	1	24	0	65	3	41	1
10:00 AM	135	5	25	0	15	0	18	0	8	0	18	2	34	2	17	1	84	2	51	3
11:00 AM	154	5	25	1	20	0	14	1	21	1	16	0	31	1	27	1	96	3	58	2
12:00 PM	173	4	20	0	21	0	18	0	28	0	23	1	41	1	22	2	110	1	63	3
1:00 PM	179	11	15	1	19	0	36	1	27	0	27	3	32	5	23	1	124	5	55	6
2:00 PM	207	6	22	0	25	1	28	0	24	1	38	0	41	1	29	3	137	2	70	4
3:00 PM	241	12	22	2	35	0	40	1	37	0	39	2	39	4	29	3	173	5	68	7
4:00 PM	286	11	37	3	42	0	43	4	49	1	43	1	45	2	27	0	214	9	72	2
5:00 PM	275	14	31	2	42	2	48	0	40	0	50	3	39	4	25	3	211	7	64	7
6:00 PM	227	11	31	1	39	4	29	0	30	1	29	1	40	2	29	2	129	6	98	5
7:00 PM	144	9	16	1	18	1	19	4	21	0	29	0	21	2	20	1	74	6	70	3
8:00 PM	124	11	14	1	14	0	21	2	17	1	21	2	16	2	21	3	66	4	58	7
9:00 PM	98	3	11	0	10	0	14	0	22	3	17	0	11	0	13	0	57	3	41	0
10:00 PM	83	5	11	1	6	0	5	0	18	0	10	1	23	3	10	0	40	1	43	4
11:00 PM	49	2	3	0	3	0	6	0	11	0	10	2	13	0	3	0	23	0	26	2
TOTAL	3,081	146	395	19	420	15	439	17	451	13	483	21	513	36	380	25	2,040	77	1,041	69

Crashes during Weekends accounted for 33.79% of all MC crashes and 47.26% of Fatal MC Crashes.

Crashes during Weekdays accounted for 66.21% of all MC crashes and 52.74% of Fatal MC Crashes.

Section 8: – Motorcycle (MC) Crashes

Table 8 – 13

MC Crashes by County

County	Number of Crashes				Number of Persons	
	Total	Fatal	Injury	PDO	Killed	Injured
Apache	7	0	7	0	0	11
Cochise	43	2	29	12	2	30
Coconino	98	4	77	17	4	90
Gila	42	5	33	4	5	40
Graham	10	0	8	2	0	9
Greenlee	7	0	6	1	0	8
La Paz	10	3	7	0	3	7
Maricopa	1,975	83	1,569	323	86	1,651
Mohave	125	12	92	21	11	106
Navajo	20	3	17	0	3	20
Pima	425	15	359	51	15	389
Pinal	129	10	102	17	11	114
Santa Cruz	7	2	2	3	2	2
Yavapai	111	5	94	12	5	107
Yuma	72	2	59	11	2	69
TOTAL	3,081	146	2,461	474	149	2,653

Table 8 – 14

Manner of Collision in MC Crashes

Manner of Collision Type	Number of Crashes							
	Total	Percent of All Crashes	Fatal	Percent of Fatal Crashes	Injury	Percent of Injury Crashes	PDO	Percent of PDO Crashes
Angle	311	16.70%	21	22.58%	250	17.97%	40	10.58%
Left Turn	470	25.24%	36	38.71%	383	27.53%	51	13.49%
Rear End	623	33.46%	16	17.20%	424	30.48%	183	48.41%
Head-On	37	1.99%	2	2.15%	29	2.08%	6	1.59%
Sideswipe (same)	229	12.30%	7	7.53%	165	11.86%	57	15.08%
Sideswipe (opposite)	33	1.77%	2	2.15%	22	1.58%	9	2.38%
Rear to Side	12	0.64%	0	0.00%	8	0.58%	4	1.06%
Rear to Rear	1	0.05%	0	0.00%	1	0.07%	0	0.00%
Other	125	6.71%	8	8.60%	94	6.76%	23	6.08%
Unknown	21	1.13%	1	1.08%	15	1.08%	5	1.32%
TOTAL	1,862	100.00%	93	100.00%	1,391	100.00%	378	100.00%

Note: Includes only multi-vehicle MC crashes

Acknowledgements

Special gratitude to our other providers of data and information including:

National Highway Transportation Safety Administration

Health Status and Vital Statistics Section, Arizona Department of Health Services

The Information Technology Group, Arizona Department of Transportation

Motor Vehicle Division, Arizona Department of Transportation

Multimodal Planning Division, Data Bureau, Arizona Department of Transportation

The National Safety Council