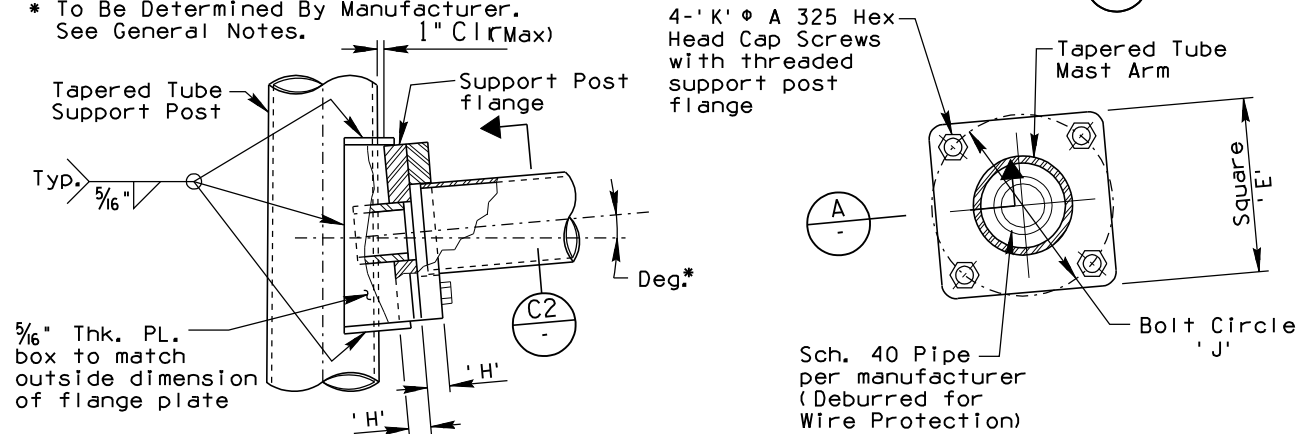
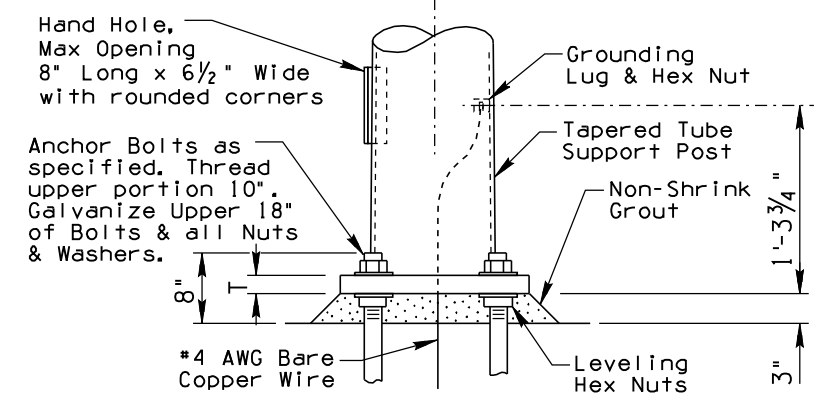


MAST ARM FLANGE DETAIL - ALTERNATIVE 1

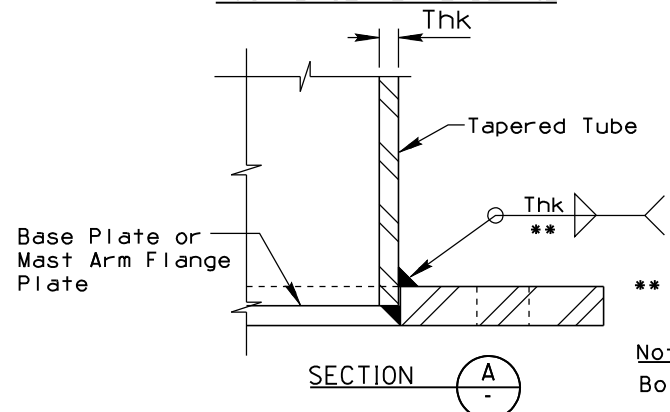
* To Be Determined By Manufacturer. See General Notes.



MAST ARM FLANGE DETAIL - ALTERNATIVE 2



POST BASE PLATE DETAIL

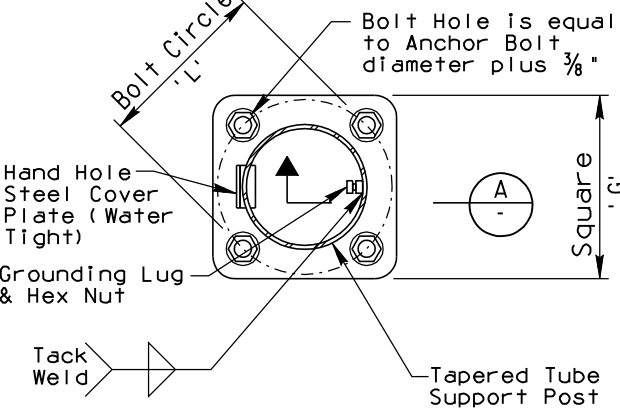


SECTION A

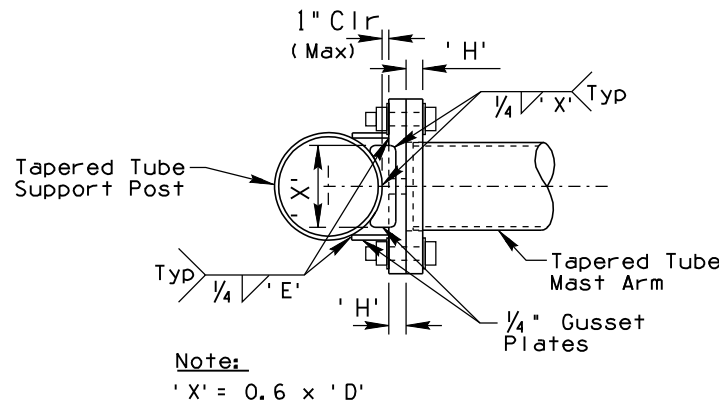
Note: Bolts, Nuts, & Washers not shown.

SECTION C1

SECTION C2



POST BASE PLATE PLAN

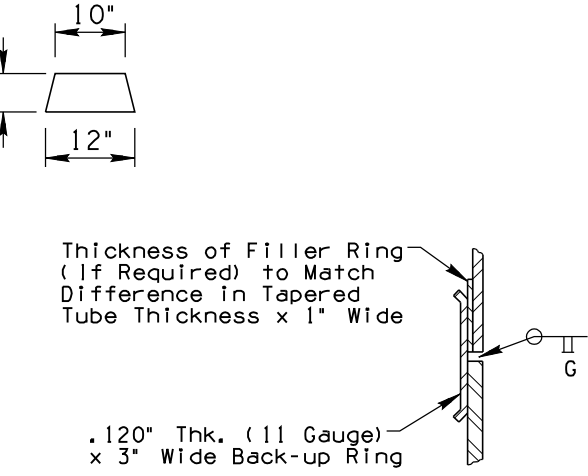


SECTION B

WEB TRUSS DETAIL

WELDING NOTES:

Welding of structural tubing shall conform to the requirements of the American Welding Society, Structural Welding Code, Latest Edition. All other welding shall conform to the requirements of the American Welding Society D1.1 Welding Code. All welding shall be continuous unless noted otherwise. All butt welds shall be full penetration using prequalified welding procedures and shall be inspected by ultrasonic testing. All butt welds shall be ground flush with base material.



SPLICE DETAIL

Mast Arm Length	Mast Arm			Mast Arm Flange Plate			
	Tapered Tube Minimum Yield	Outside Diameter 'D'	Wall Thickness	Plate Thk. 'H'	Square 'E'	Bolt Circle 'J'	Bolt Diameter 'K'
16'-0"	48.0 ksi	8"	0.1793"	1"	12.5"	12"	1.25"
	55.0 ksi	7"	0.1793"	1"	12"	11"	1.25"
	65.0 ksi	7"	0.1875"	1"	12"	11"	1.25"
22'-0"	48.0 ksi	10.75"	0.1793"	1.25"	14"	14.5"	1.25"
	55.0 ksi	9"	0.1793"	1.25"	14"	13"	1.25"
	65.0 ksi	8"	0.1875"	1.25"	13"	12"	1.25"
34'-0"	48.0 ksi	13.5"	0.2391"	1.5"	17.5"	18"	1.5"
	55.0 ksi	12.5"	0.2092"	1.5"	17"	17"	1.5"
	65.0 ksi	13"	0.1875"	1.5"	17"	17"	1.5"

NOT TO SCALE

DESIGN APPROVED	ARIZONA DEPARTMENT OF TRANSPORTATION INTERMODAL TRANSPORTATION DIVISION TRAFFIC SIGNING & MARKING STANDARD DRAWINGS	REVISION 6/14
SIGNATURES		DRAWING NO. S-11
APPROVED FOR DISTRIBUTION	TAPERED TUBE SIGN STRUCTURE CANTILEVER POST AND MAST ARM DETAILS	SHEET NO. 2 of 4
ON FILE		