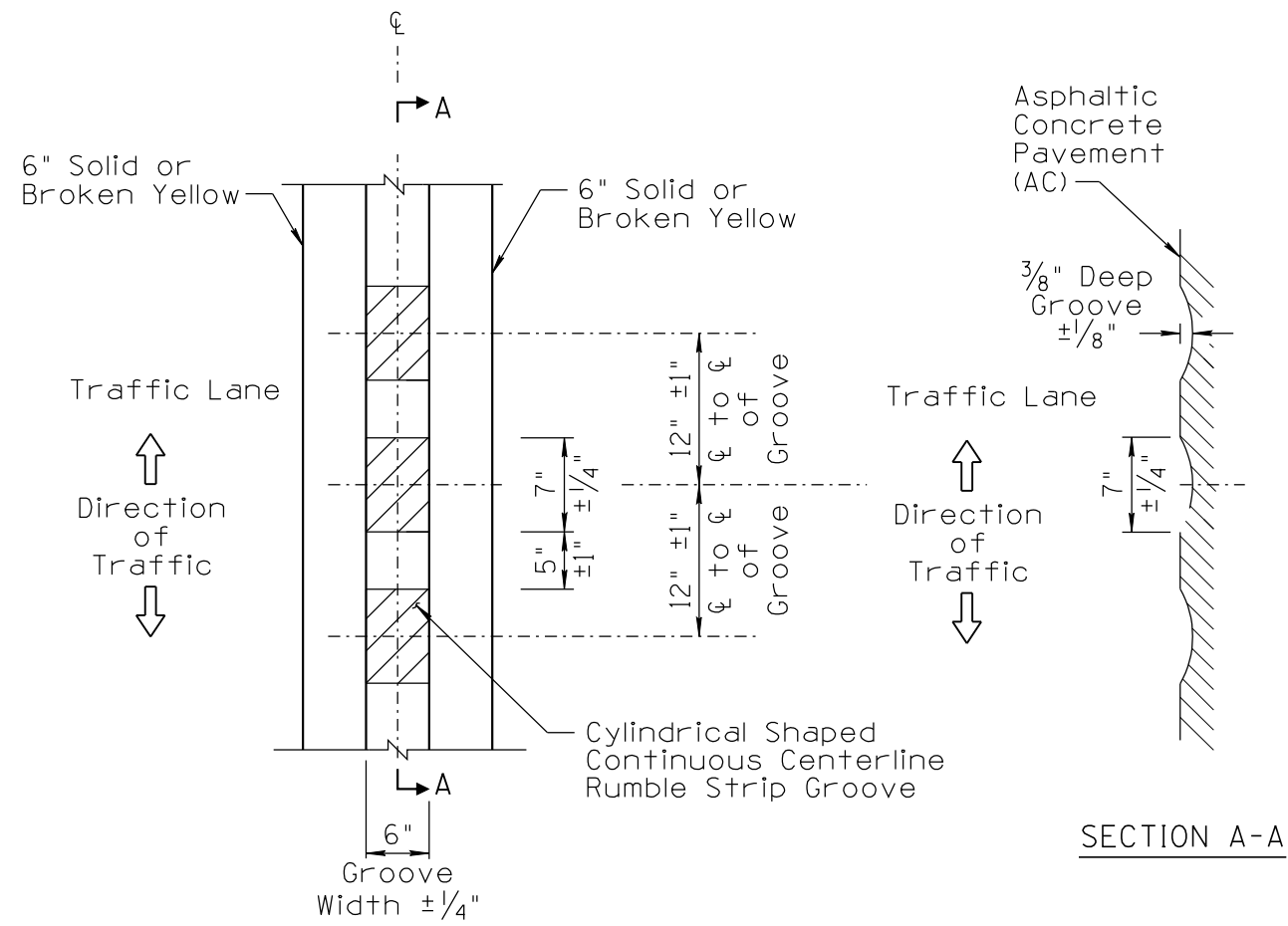
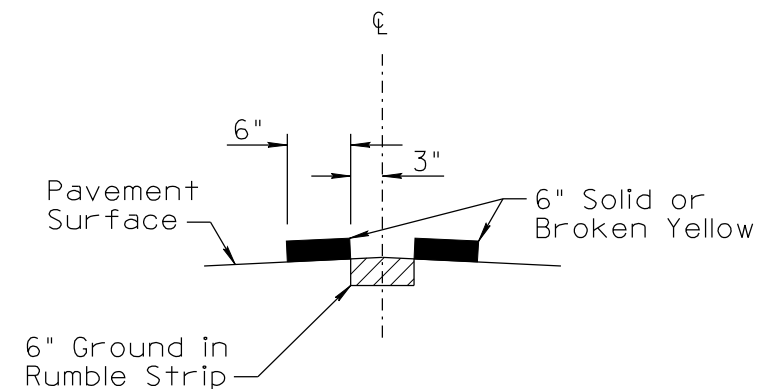
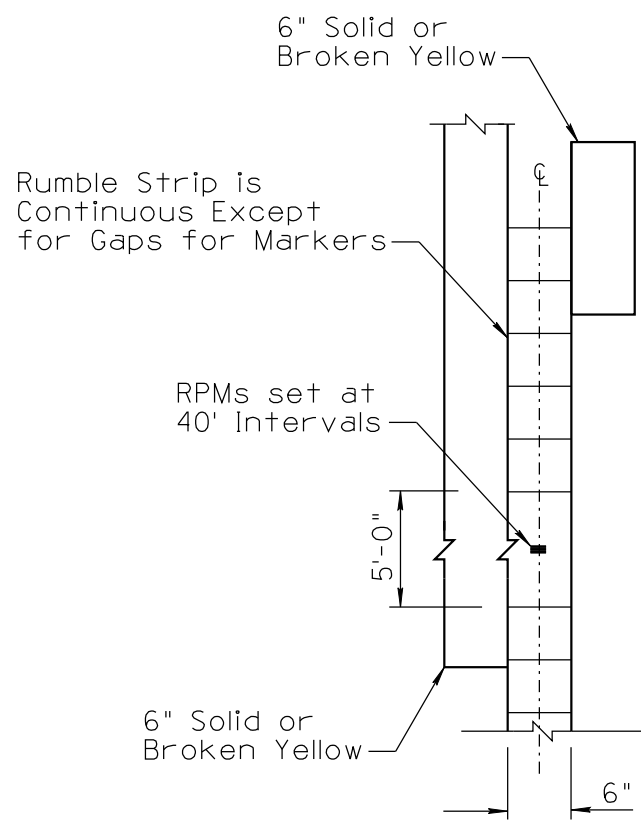


NO	DESCRIPTION OF REVISIONS	MADE BY	DATE
1	ORIGINAL ISSUE	HDR	6/14
2			
3			
4			



PLAN VIEW



PROFILE VIEW

**NOTES:**

1. See exception table in plans for rumble strip locations and exceptions.
2. The longitudinal rumble strip groove and pattern shall be constructed by milling or grinding the indentations in the asphaltic concrete pavement.
3. The grinding machine shall be equipped with an acceptable guide that allows the strip to be installed to the proper alignment within acceptable tolerances.
4. If permanent markings are not in place, to ensure proper rumble strip location, a temporary paint edge line shall be installed at the permanent location of the center line prior to the installation of the ground-in rumble strip. The rumble strip shall follow the location of the center line.
5. The radius and configuration of the cutting/milling drum and machine shall be able to produce a smooth and consistent groove to the requirements of these specifications.

NOT TO SCALE

DESIGN APPROVED	ARIZONA DEPARTMENT OF TRANSPORTATION INTERMODAL TRANSPORTATION DIVISION TRAFFIC SIGNING & MARKING STANDARD DRAWINGS	REVISION 6/14
<b>SIGNATURES</b>		DRAWING NO. M-22
APPROVED FOR DISTRIBUTION	CENTERLINE RUMBLE STRIP GROOVE, PATTERN AND LOCATION DETAILS	SHEET NO. 3 of 3
<b>ON FILE</b>		