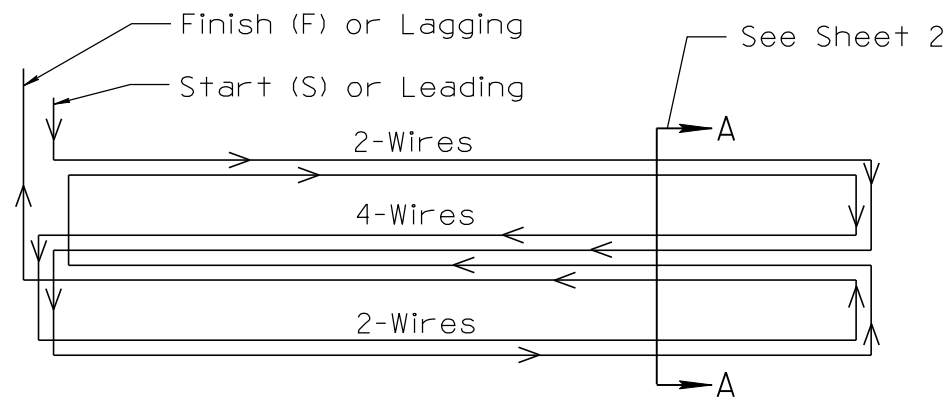
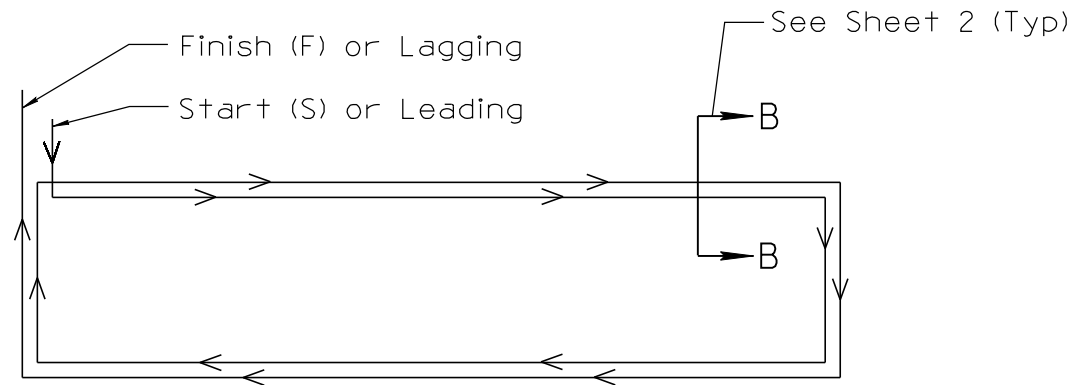


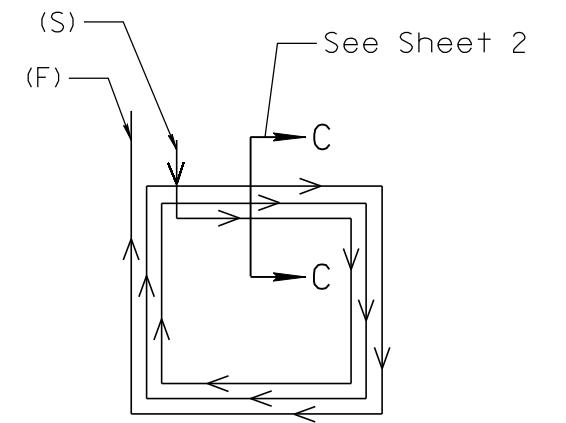
DATE: _____ MADE BY: _____
 DESCRIPTION OF REVISIONS: _____ NO. 3 4 DATE: 03/10 MADE BY: C. COLE
 DESCRIPTION OF REVISIONS: _____ NO. 1 2 DATE: 2010 EDITION



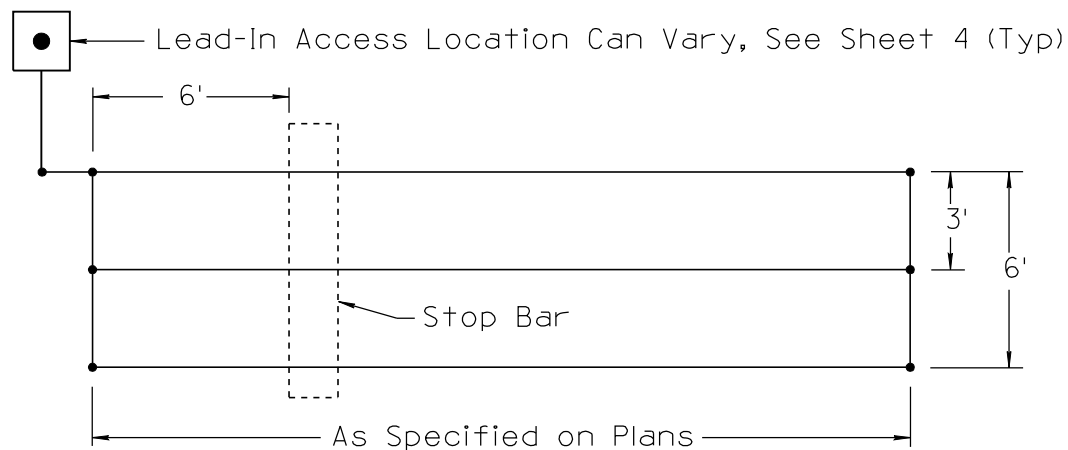
WINDING DIAGRAM
(For 2 Turns Quad)



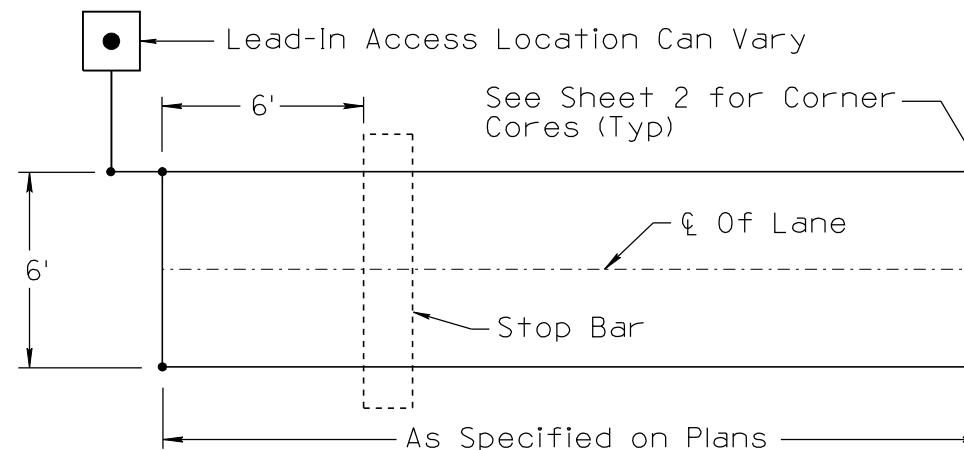
WINDING DIAGRAM
(For 2 Turns Std)



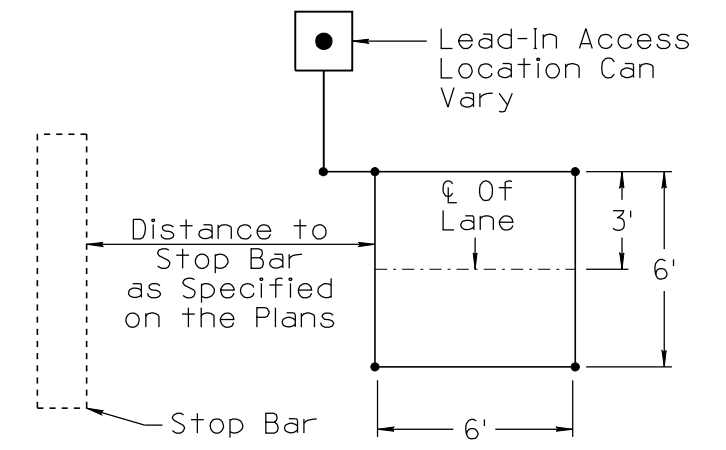
WINDING DIAGRAM
(For 3 Turns Std)



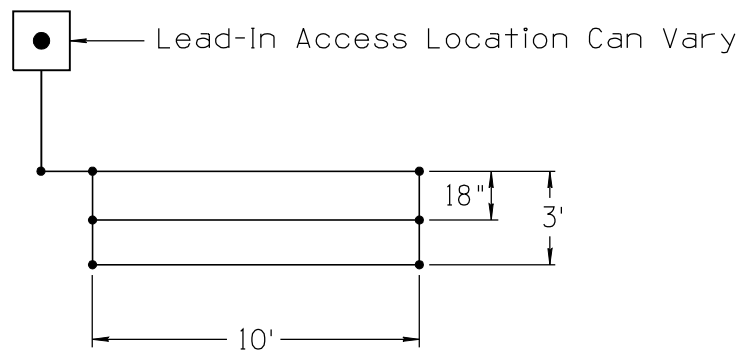
QUADRUPOLE (QUAD) VEHICLE DETECTOR



STANDARD (STD) VEHICLE DETECTOR



STANDARD ADVANCE VEHICLE DETECTOR



BICYCLE QUAD DETECTOR
(Winding Diagram Same as Above)

NOTES:

1. All materials and constitution shall conform to the requirements of the standard specifications
2. See other sheets within this drawing series for other details and requirements.
3. Detector loop saw cutting and installation shall be subjected to full-time inspection by the Engineer. Detector loops that are not inspected full-time may not be eligible for payment. Therefore, the contractor shall coordinate with the Engineer at least 72 hours in advance to schedule oversight.
4. Prior to cutting and coring, the contractor shall meet with the Engineer and determine the final loop layouts. Upon completion of this meeting the contractor shall measure out and mark the proposed lead-in and loop locations with white, silver or black spray paint or chalk. Marked lines shall be straight and exact to the loop locations and sizes as show on the plans. Locations shall be adjusted as directed by the Engineer. Marks not to be used shall be removed or obscured in on acceptable fashion. The exact marking color and material used shall be approved by the Engineer. However, paint should not be used on the finished pavement or riding surface.

NOT TO SCALE

- Standard 6' x 6' Loop Detector
- Standard Loop Detector
- Quadrupole Loop Detector

PLAN SYMBOLS

DESIGN APPROVED	ARIZONA DEPARTMENT OF TRANSPORTATION INTERMODAL TRANSPORTATION DIVISION TRAFFIC SIGNALS AND LIGHTING STANDARD DRAWINGS	REVISION 03/10
SIGNATURE		DRAWING NO. T.S. 7-1
APPROVED FOR DISTRIBUTION	LOOP DETECTOR LOCATION SAW CUT PATTERNS AND INSTALLATION DETAILS	SHEET NO. 1 OF 5
ON FILE		