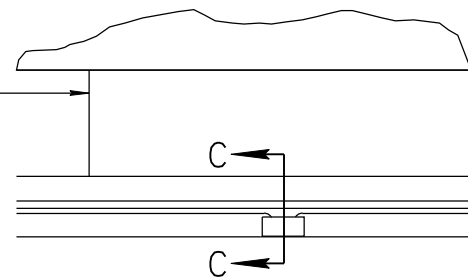
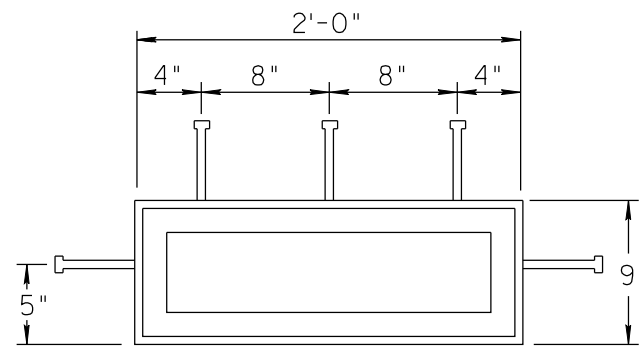


NO	DESCRIPTION OF REVISIONS	DATE	MADE BY
1	2010 EDITION	03/10	C. COLE
2	2011 EDITION - UPDATED NOTE II	09/11	C. COLE

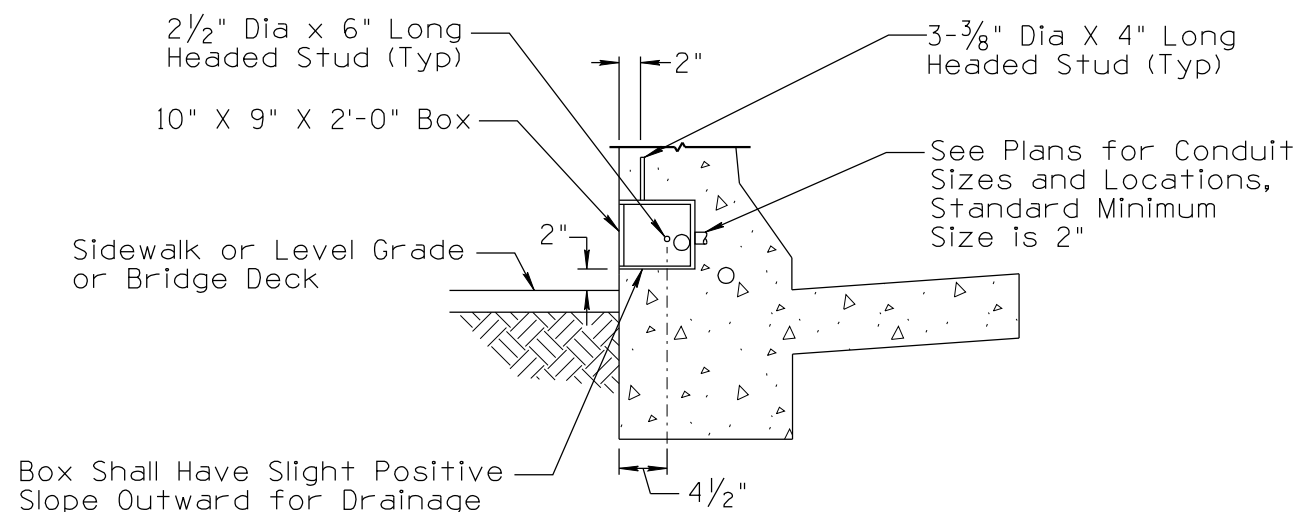
Gutter Pan or Bridge Deck
See Roadway or Structure
Plans



BOX ON BARRIER BACK DETAIL



ELEVATION C-C



SECTION C-C

NOTES:

1. See specifications for materials and construction.
2. See ADOT Std Dwg B-21.30 for additional information.
3. See Structural plans for barrier details and reinforcing.
4. Cover plate shall have "ADOT ELECTRICAL HIGH VOLTAGE" welded stamped or etched on it in 1" letters.
5. The junction box shall be fabricated from sheet, frame and plate steel conforming to an appropriate ASTM Specification. The sheet steel shall be bent and/or welded at corners to provide a concrete and weather tight enclosure. Suitable openings shall be provided for entrance of electrical conduits.
6. All steel items shall be hot dipped galvanized after fabrication in accordance with the applicable requirements of ASTM A123.
7. The installation of the steel studs and welding shall conform to the latest edition/revision of AWS D1.1 and AASHTO Standard Specification for welding of structural steel highway bridges.
8. The 1/8" neoprene gasket or similar suitable synthetic rubber shall be continuous around cover frame space and secured to the frame or Lid.
9. Conduit knock-outs shall be cut and placed per the requirements of the plans.
10. Conduit connections to the junction box shall be with threaded connectors and lock nuts. The interface between the conduit box shall be fully sealed prior to the concrete pour.
11. The steel box shell and the steel lids shall be bonded in an approved manner.
12. See sheet 1 of 2 for other requirements.

NOT TO SCALE

DESIGN APPROVED	ARIZONA DEPARTMENT OF TRANSPORTATION INTERMODAL TRANSPORTATION DIVISION TRAFFIC SIGNALS AND LIGHTING STANDARD DRAWINGS	REVISION 09/11
SIGNATURE		DRAWING NO. T.S. 1-8
APPROVED FOR DISTRIBUTION	ON FILE	SHEET NO. 2 OF 2
	BACK OF BARRIER JUNCTION BOX	