

MAINTENANCE UNIT BOUNDARIES

YUMA MAINTENANCE

Supervisor: Ramiro Sandoval 928.317.2124

I-8	MP 0 — 79.86
US 95	MP 0— 0.6, 29.3-70.7
SR 195	MP 5.5 — 27

QUARTZSITE MAINTENANCE

Supervisor: Timothy Mitchell 928.927.6311

I-10	MP 0 — 52
SR 72	MP 13.1 — 49.9
US/SR 95	MP 70.7 — 161.7
US 60	MP 31.26 — 49.56
SR 95 Spur	MP 143.8 — 144.8
SR 95 Spur	MP 158.7 — 159.5

GILA BEND MAINTENANCE

Supervisor: Cameron Mendoza 928.683.2582

I-8	MP 79.87 — 147.6
SR 85	MP 120.3 — 148.5
SR 85 South	MP 0 — 32.51

TONOPAH MAINTENANCE

Supervisor: Sal Mata 602.712.2141

I-10	MP 52— 113.40
SR 85	MP 148.5— 155.04

ADOT

MISSION

We provide highway infrastructure and transportation services

VISION

To safely connect people and empower our economy

VALUES

Easy to work with, collaborative, results focused

TRAFFIC INCIDENT MANAGEMENT:

QUICK CLEARANCE

FENDER BENDER?

If you're in a minor or non-injury crash and your vehicle is operable, move it out of travel lanes.

Move your vehicle to the side of the road and inspect it there — not in dangerous travel lanes.

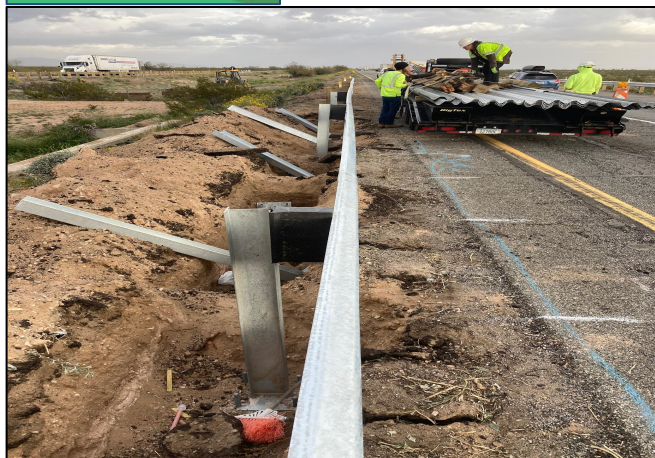
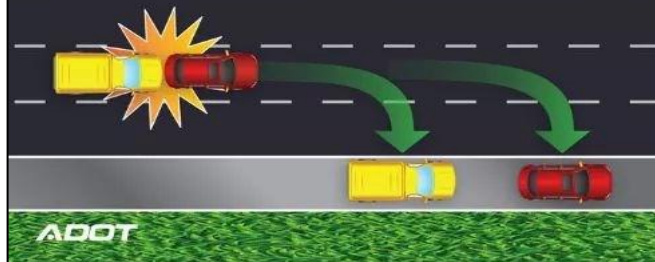
Often, a primary crash leads to a traffic backup and increases the risk of a secondary crash, which can be more severe than the original collision.

Vehicles involved in a non-injury crash that remain operable, according to Arizona law, must be removed from the roadway.

Emergency responders — police, fire, tow truck operators, etc. — need a safe place to work, too. On average, a tow truck operator is struck and killed every six days in the U.S.

Why move your vehicle out of travel lanes?

- Driver Safety
- Traveler Safety
- Responder Safety
- It's the Law! A.R.S. 28-674



ADOT

Arizona Department of Transportation

SOUTHWEST DISTRICT

Jan - March 2024

CURRENT CONSTRUCTION PROJECTS

Interstate 8	MP 135-Pinal Co. Line
Type of Project:	Pavement Preservation
Contractor:	FNF Construction, Inc.
Status:	65% Complete
Contract Amount:	\$11,189,791
Interstate 8	Aztec to County Line
Type of Project:	Pavement Preservation
Contractor:	FNF Construction, Inc.
Status:	85% Complete
Contract Amount:	\$17,478,739
State Route 85S	Gila Bend-Range 4 Rd
Type of Project:	Pavement Life Extension
Contractor:	Sunland Asphalt & Construction, LLC.
Status:	0% Complete
Contract Amount:	\$6,097,000
Interstate 10	443rd Ave-Wintersburg
Type of Project:	Pavement Preservation
Contractor:	FNF Construction, Inc.
Status:	94% Complete
Contract Amount:	\$28,041,563
US 95	Rifle Range Road-Wellton Mohawk Canal Bridge
Type of Project:	Roadway Widening & Reconstruction
Contractor:	Fisher Sand & Gravel, Co.
Status:	50% Complete
Contract Amount:	\$28,053,208
Interstate 10	Dome Rock Rd-Scaddan
Type of Project:	Pavement Preservation
Contractor:	Fisher Sand & Gravel, Co.
Status:	35% Complete
Contract Amount:	\$28,200,201

CURRENT CONSTRUCTION PROJECTS

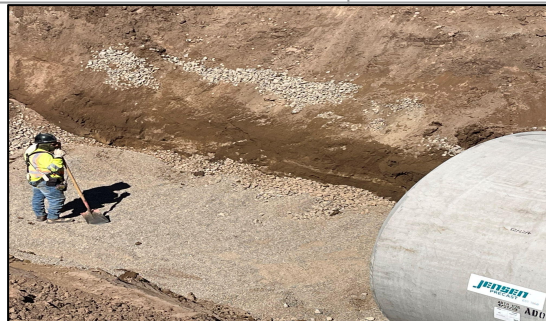
Interstate 8	Truck Parking Availability
Type of Project:	Truck Parking
Contractor:	William Charles Const. Co.
Status:	12% Complete
Contract Amount:	\$3,487,071
Business 8	Gila Bend
Type of Project:	ADA Improvement
Contractor:	DBA
Status:	2% Complete
Contract Amount:	\$1,124,579

UPCOMING CONSTRUCTION

PROJECT	ADVERTISE
US 60, Vicksburg -SR 72 Pavement Preservation	FY 24
Interstate 10 Scaddan- Plomosa Pavement Preservation	FY 24
Statewide Port of Entry Barrier Protection	FY 24
State Route 85S, I-8-Thayer Rd Drainage Improvement	FY 24

CURRENT MAINTENANCE PROJECTS

PROJECT	DATES
SR 95, MP 142.5-144.5 Crack Seal Project	Jan.-Feb. 2024
I-8, MP 106-115 Crack Seal Project	Feb.-March 2024
I-8, MP 0.56-13.7, 20.5-29, & 66-71 Crack Seal Projects	March 2024



SOUTHWEST DISTRICT

Bruce Fenske	District Administrator
Jon Fell	Assistant District Engineer
Vacant	Senior Resident Engineer
John Murillo & Micah Hannam	Resident Engineer (Consultant)
Danny Soliz	Operations Superintendent
Stephanie Dyer	Community Relations Manager
Gerry Ramirez	Permits Supervisor
Frank Felix	Traffic Analyst
Vacant	Environmental Coordinator

District Office

2243 E Gila Ridge Road | Yuma, AZ 85365
Phone: 928.317.2101 Fax: 928.317.2107

Construction Office

2243 E. Gila Ridge Road | Yuma, AZ 85365
Phone: 928.317.2150

Southwest District Contacts

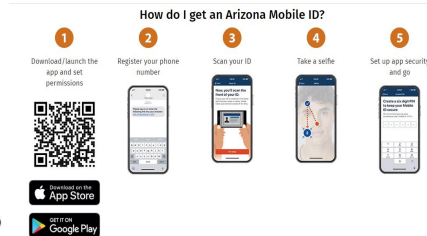
azdot.gov/contacts-southwest-district
Project Information Hotline 1.855.712.8530

AZ 5-1-1

Updates Arizona's Road Conditions Every 5 Minutes
az511.com Click on 'Closures'
Or Call: 1.888.411.ROAD (7623)



ARIZONA MOBILE ID



DOWNLOAD THE ADOT APP

The App is a free download available on both iTunes App Store and Google Play