

The Way to Better Jobs  
Expanding Arizona's Advantage

ARIZONA'S KEY  
**COMMERCE**  
**CORRIDORS**

---

LOCAL JOBS, GLOBAL MARKETS

Connecting  
Arizona to  
Global Markets

Essential Foundational  
Infrastructure  
for Our Economy

Advancing Arizona's Economy

# Creating a Strong, Resilient Economy

One of the keys to bolstering Arizona's economy is ensuring that critical infrastructure facilitates economic and job growth. With our prime location amid major markets, an excellent surface transportation system connects us to markets and facilitates quality job creation and the growth of base industries that export outside of the state.

## Arizona's Competitive Advantage:

- Available, skilled workforce for export-focused base industries to produce goods to sell in major markets
- The migration of businesses away from California's challenging business climate

Key Commerce Corridors are integral to the state transportation system and Arizona's continued economic growth and development

- Statewide commerce concentration in base industries including manufacturing, aerospace and defense, renewable energy, science and technology, small business and entrepreneurship
- An existing transportation network connecting to suppliers and out-of-state customers

Producing goods for customers in major markets creates quality jobs

**Jobs**

Base industries, especially manufacturing, produce goods for trade and export

**Market Connections**

Transportation infrastructure connects Arizona to major markets

**Transportation Infrastructure**

**Export and Trade**

Trade brings resources to build the statewide and local economy

Improvements to Key Commerce Corridors allow Arizona's economy to maximize its unique location.

Arizona's prime location between two existing major domestic markets in Texas and California and adjacent to the growing international market in Mexico is a key competitive advantage for our state.

Arizona Exports (\$ Billions)			
	2011	2035	Change
California	\$21.1	\$58.9	280%
Texas	\$10.3	\$34.5	330%
Mexico	\$8.6	\$35.6	410%

Source: Freight Analysis Framework Version 3 (FAF3), FHWA Office of Freight Management, U.S. Department of Transportation Federal Highway Administration. Data presented in 2007 dollars.

California, Texas, and Mexico are Arizona's largest export trade partners. California and Texas represent over a third of all of Arizona's exports to all U.S. states.





# The Key Commerce Corridors\*

The Key Commerce Corridors plan represents the Arizona Department of Transportation's role over the next 20 years to preserve and encourage quality job creation in Arizona. Key goals of the plan are:

- Enhance and maintain access to more than 16 million consumers in Southern California and 13 million consumers in Central Texas
- Improve commercial flow to and from Mexico and Central America (Potential I-11 Corridor)
- Improve connections with Las Vegas, Salt Lake City, and the Northwest (Potential I-11 Corridor)
- Support the State's focus on quality economic growth

**Businesses connect with suppliers and customers along statewide roadways—the most important are the Key Commerce Corridors**

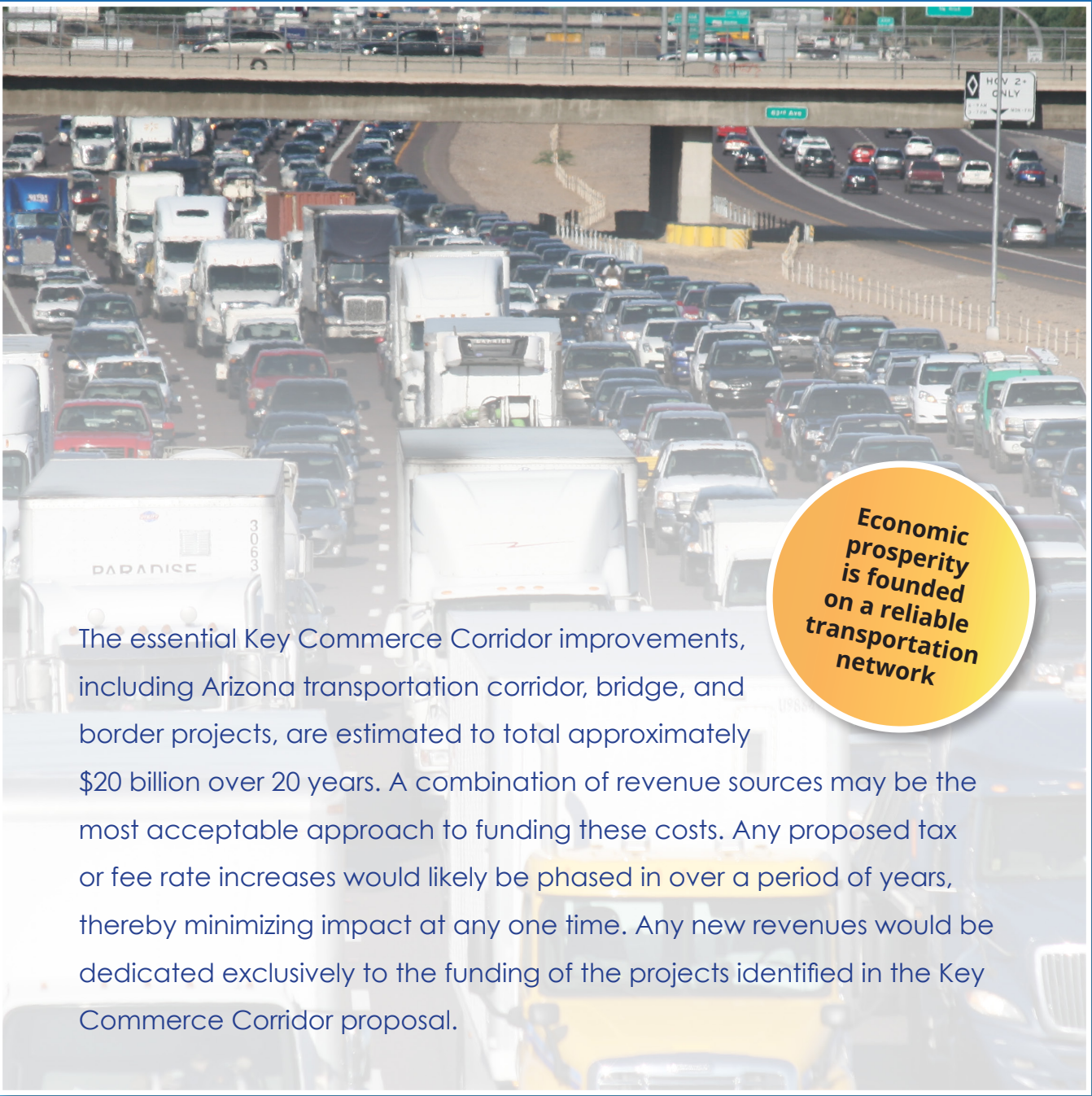
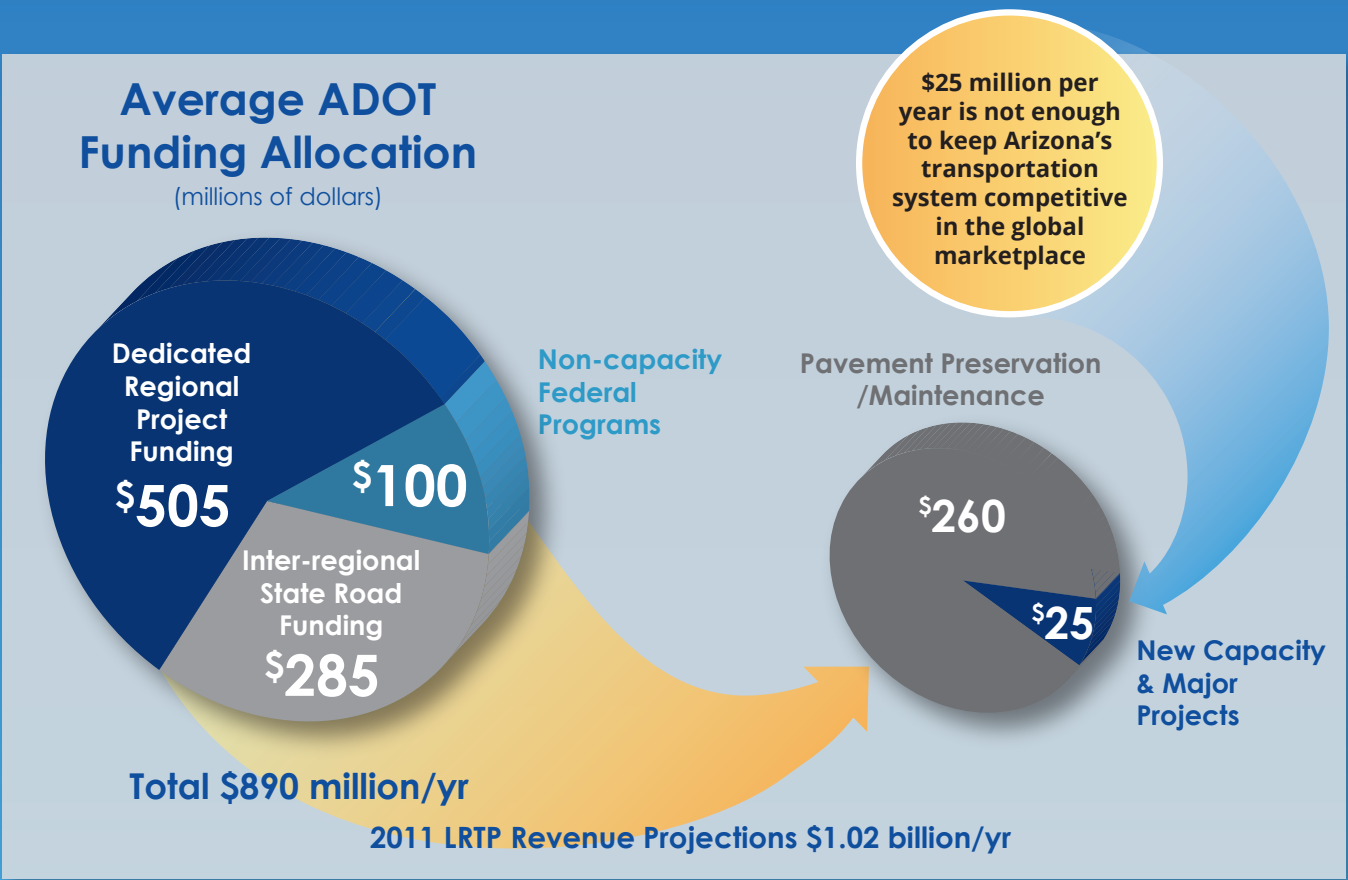
## Legend

- Infrastructure Investments
- Potential Public-Private Partnership Infrastructure Investments
- International Port of Entry
- Transportation Priority Corridors



# Constrained Funding Outlook

Preservation of the system is our number one priority—but after that, current projections show \$25 million a year for new capacity or major projects—**this equates, for example, to only upgrading one-half mile of interstate per year (adding a lane in each direction)**. This is not enough to keep pace with economic and job growth throughout Arizona.



**Economic prosperity is founded on a reliable transportation network**

The essential Key Commerce Corridor improvements, including Arizona transportation corridor, bridge, and border projects, are estimated to total approximately \$20 billion over 20 years. A combination of revenue sources may be the most acceptable approach to funding these costs. Any proposed tax or fee rate increases would likely be phased in over a period of years, thereby minimizing impact at any one time. Any new revenues would be dedicated exclusively to the funding of the projects identified in the Key Commerce Corridor proposal.



# Why Key Commerce Corridors?

Improvements to Key Commerce Corridors are critical to meeting Arizona's projected population growth and job demand



Key Commerce Corridors are integral to the state transportation system and Arizona's continued economic growth and development

ADOT identified these routes based on professional transportation planning and engineering analysis

Businesses connect with suppliers and customers along statewide roadways—the most important are the Key Commerce Corridors

Goods produced here and sold elsewhere drive the local economy

Economic prosperity is founded on a reliable transportation network



Prepared by the Arizona Department of Transportation

