

1 OVERVIEW

ADOT and Graham County hosted an open house for Alternate Route Study on April 29th, 2009 in the Graham County General Services building in Safford. The purpose of the meeting was to present the determination of need for the alternate route and show the preliminary corridor alternatives. Alternate route focus area, future work tasks and the project schedule were also presented. The meeting was intended to be informative while gathering public input on issues and opportunities to be considered during the study. Study team members were present during the meeting to answer questions and to collect comment letters.

2 NOTIFICATION

Meeting advertisement was published in Eastern Arizona Courier newspaper both on Sunday, April 26th, 2009 and Wednesday, April 29th, 2009. The advertisement outlined the purpose of the meeting and also provided contact information for the project management team.

3 MEETING DETAILS

There were 3 attendees at the public meeting. The concerns expressed were focused on improving traffic safety and impacts to existing residences. Attendees were encouraged to leave comments either during the meeting or later within two weeks from the meeting either through mail, email or fax. The comments are summarized below.

4 COMMENT SUMMARY

The comments from the meeting suggested the alternate route for the state routes US 60 and US 191 follow either the alternative AE2 or C1D3 alignment. This would provide an opportunity to decrease the traffic on US 70 and US 191 while providing an opportunity to develop in the infill area.

**Arizona Department of Transportation
Graham County**



PUBLIC OPEN HOUSE
**Graham County Small Area
Transportation Study (SATS) &
Graham County Alternate Route Study**



**A public open house will be held on Wednesday, April 29, 2009
at the following location:**

**Graham County
General Services Building**
921 Thatcher Boulevard
Safford, Arizona 85546
5:00 p.m. - 7:00 p.m.

The Arizona Department of Transportation (ADOT) and Graham County, in coordination with Safford, Thatcher and Pima, have initiated two transportation studies in Graham County, a Small Area Transportation Study (SATS) to examine regional travel and an Alternate Route Study to examine potential new corridors in the region.

The SATS examines current and projected travel demand to provide recommendations for future transportation improvements. The purpose of this meeting will be to inform the public of the existing and future population, employment and travel characteristics of the region and to gather public input on issues and opportunities to be considered during the study.

The Alternate Route Study examines regional travel and will propose a new alternate route for traffic traveling through the region. In this meeting, the determination of need and preliminary alternatives will be presented as information for the public. Input will be collected through public comment to understand concerns and potential improvements associated with the identified alternatives.

This will be the second open house meeting held for the projects. Study team members will be present to answer your questions and address your concerns. Maps of the project area and informational exhibits will be available for viewing at the meeting.

Written comments may be submitted by May 8th, 2009, to:

Graham County SATS

Graham County c/o Will Wright
921 Thatcher Blvd
Safford, Az 85546
Phone: (928) 428-0410
Fax: (928) 428-8825
Email: wwright@graham.az.gov

Graham County Alternate Route Study

ADOT c/o Charlene FitzGerald,
206 S. 17th Ave 310B
Phoenix, AZ 85007
Phone: (602) 712-6196
Fax: (602) 712-3046
Email: cfitzgerald@azdot.gov



Graham County Alternate Route Study

- **Study Need**
 - Plan for regional growth / local development (Horizon years of 2020, 2030, 2040)
 - Provide an alternative for regional travel

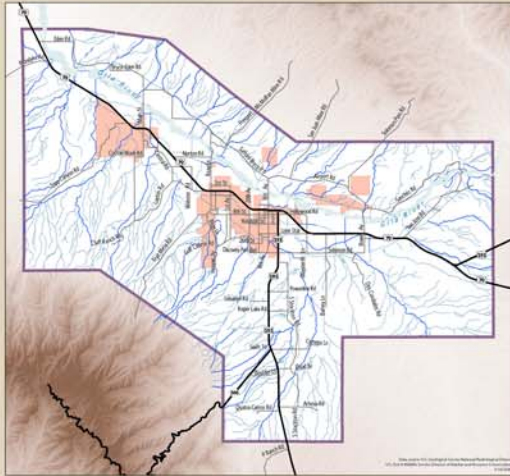
- **Study Goals and Objectives**
 - Create a "vision" for an Alternate Route and develop a plan for achieving the vision
 - Define the role of an Alternate Route in the regional system
 - Define long-term corridor needs and requirements
 - Establish principles, policies and guidelines for corridor improvements
 - Develop / evaluate alternate route alternatives
 - Provide recommendations based on local input for the preferred alternate route
 - Coordinate with other current ongoing area studies to ensure an integrated roadway corridor system

- **Study Challenges**
 - Incorporate regional and local travel
 - Address current and future development
 - Address engineering challenges
 - Consider roadway environment

Graham County Alternate Route Study

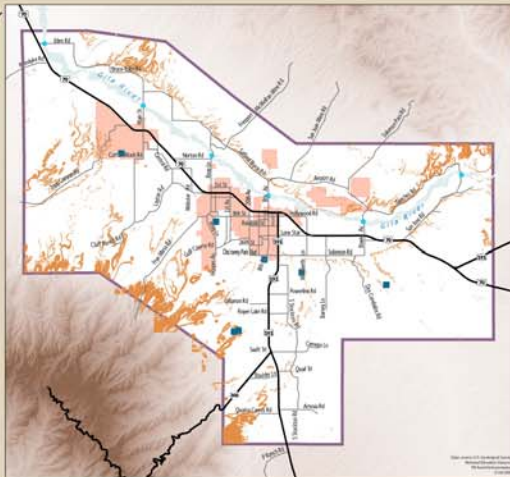
Safeguarding Water Resources

Legend
 Lakes and Reservoirs
 Gila River
BlueLines*
 Named
 Unnamed
*Lines extending outside of study area not shown



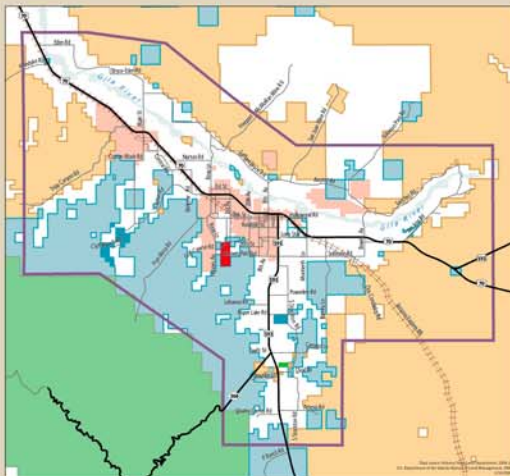
Preserving Topographic Character

Legend
 Existing Bridge
 Earthen Dam
 High Slope Areas

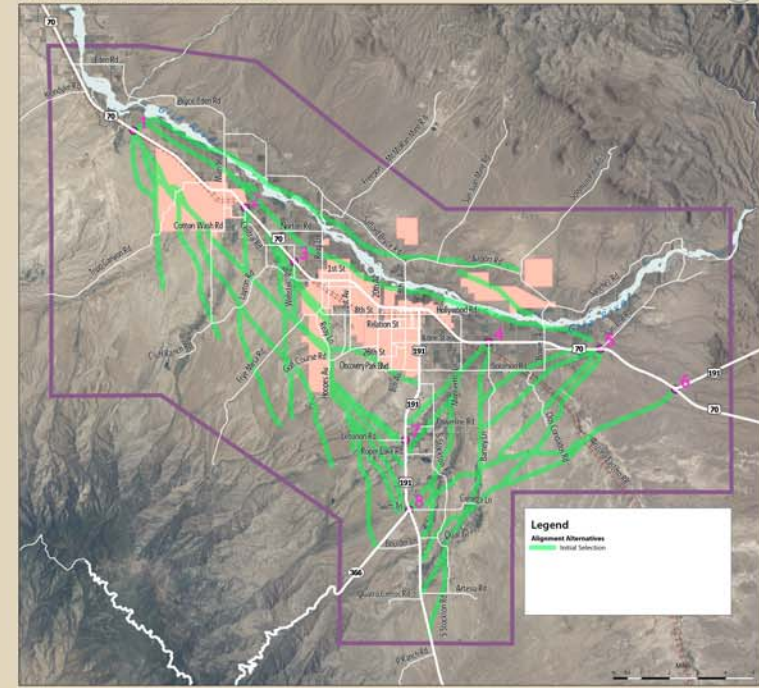


Identifying Property Control

Legend
 Bureau of Land Mgmt.
 Coronado N.F.
 Game and Fish
 Local or State Park
 Military Res.
 Private Land
 State Trust Land
 Study Area
 Incorporated area

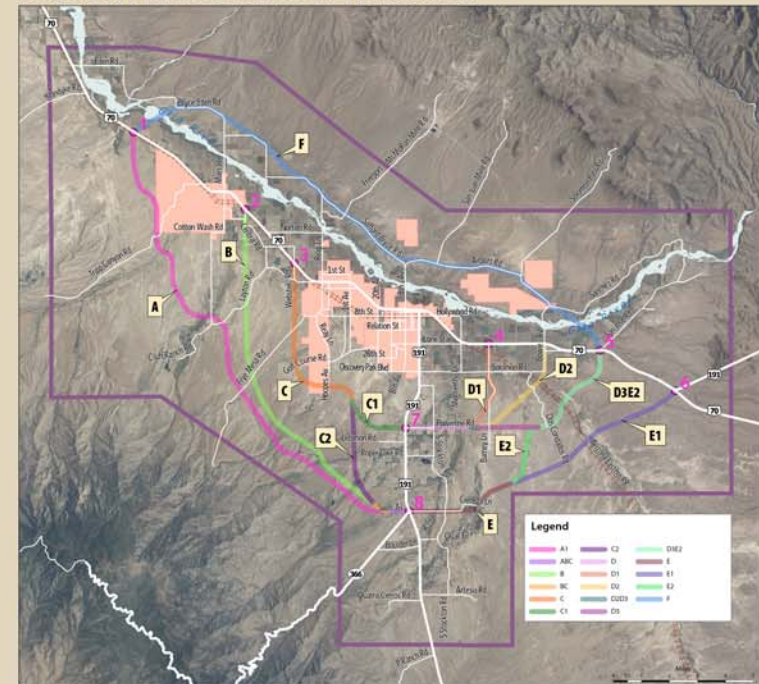


Initial Alternatives



Legend
 Alignment Alternatives
 Initial Selection

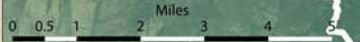
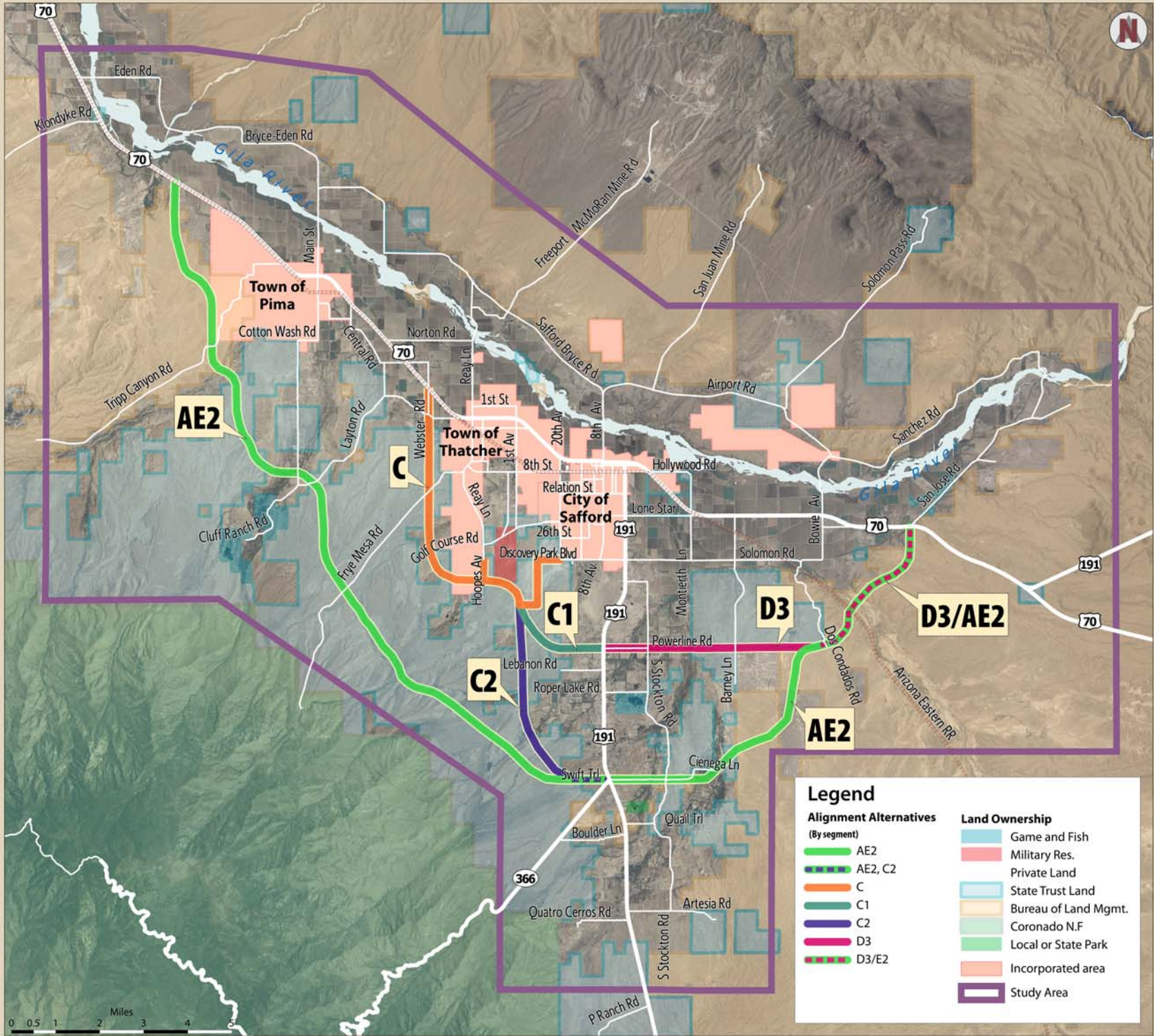
Second Refinement Alternatives



Legend

Graham County Alternate Route Study

Recommendations from Working Paper Two





Graham County Alternate Route Study

- **Project Stakeholders**
 - Arizona Department of Transportation (ADOT)
 - Graham County
 - City of Safford
 - Town of Thatcher
 - Town of Pima
 - South Eastern Arizona Governments Organization (SEAGO)

Milestone	
Existing and Future Condition Analysis (Working Paper No 1)	July 2008
Public Meeting No 1	August 2008
Determination of Need and Feasibility - Development of Alternatives (Working Paper No 2)	Spring 2009
Public Meeting No 2	April 2009
Alternative Analysis and Recommendation of Preferred Alternative (Working Paper No 3)	Summer 2009
Final Report	Fall 2009