



Arizona Department of Transportation and the Town of Wellton  
Wellton Long-Range Transportation Study  
Public Open House 1: Summary  
November 10, 2010



Meeting date: Wednesday, October 27, 2010  
5:00 p.m. to 7:00 p.m.

Meeting Location: Wellton Community Center, 10234 Dome Street, Wellton, AZ 85356

Participants: 24 community members attended

### **Project Overview**

The Arizona Department of Transportation (ADOT) is working together with the Town of Wellton to conduct a long-range transportation study. The study will result in a plan of improvements for planning periods of 5, 10, and 20 years. The study will also project future build-out conditions and develop a framework for accommodating build-out travel demands. The final recommendation will be multimodal, considering roadways, non-motorized transportation modes (bicycles and pedestrians) and transit (bus and rail) components.

The public's input is essential to the study results. The first of two public open houses was held on Wednesday, October 27, at the Wellton Community Center. Project team members presented information related to the existing and future conditions and needs of Wellton's transportation system. A second open house will be held in 2011 to present the study's findings related to the recommended plan.

### **Public Meeting Notification**

Efforts were made to notify the Wellton community as well as the surrounding areas. A variety of methods were used to announce the study and the public open house.

Prior to the open house, ADOT:

- Inserted notifications in the Town's October utility billing cycle. Approximately 1,000 Wellton residents received these notifications with their water bill.
- Distributed emails to a list of 326 individuals on Tuesday, October 26, 2010.
- Distributed notification posters to twelve locations throughout town including:
  - Coyote Wash Golf Course – Pro Shop
  - Mota's Market
  - Pioneer RV Park
  - Sun Country RV Park
  - Sunset Community Health Center
  - Tier Drop RV Park
  - Wellton Coffee Shop
  - Wellton Justice Court
  - Wellton Laundry Mat
  - Wellton Post Office
  - Wellton Senior Center/Community Center
  - Wellton Town Hall
- Distributed information to the media the week of October 18. This included the Yuma Sun, Bajo el Sol, KSWT News Channel 13, KYMA News Channel 11, El Dorado Broadcasting, KLIZ, KAWC, San Luis News, and El Siglo.



### Public Meeting Overview

ADOT Multimodal Planning Division Project Manager, Mark Hoffman, welcomed the participants, recognized elected officials in attendance, and introduced the project team. He then gave a brief overview of the Planning Assistance in Rural Areas (PARA) program. Michael Grandy, Project Manager with Kimley-Horn and Associates, presented technical information regarding the study. He introduced the study area, reviewed the current and projected populations, and discussed the existing and future needs of the transportation system. He then turned the meeting over to Gaby Gonzalez, ADOT Public Information Officer, to lead the participants in a question and answer session.

Below is a summary of the questions asked and answers provided at the end of the presentation.

### Question-and-Answer Session Summary

1. *We experience a lot of golf cart traffic during the winter months when the winter visitors arrive. How are golf carts classified? They do not seem to fit into any multimodal category. Golf carts are a problem because they travel too slow and create dust when using non-paved surfaces.*

Golf carts will be considered in their own category. This study does recognize the increase in population in the winter months, and will consider golf cart transportation. Additionally, the town recognizes the issue and applied for funding to construct a multi-use path along Avenue 29E/William Street. At this time, no funding has been secured but the town will continue to pursue funding opportunities.

2. *We need to develop a solution for emergency services to cross the railroad tracks. Often times, trains are stopped on the tracks and traffic backs up. If there is an emergency on the other side of the tracks, emergency responders need to be able to get through.*

Safety is one of ADOT's highest priorities. Emergency access will be considered when developing a transportation plan. Opportunities for crossing the railroad tracks in an emergency situation will be identified.

3. *There has been a lot of discussion regarding new interstate interchanges. Where would these new interchanges be located?*

This plan will include potential new interstate interchanges. Specific locations will be identified and traffic volumes will be analyzed to determine the best locations. ADOT has a policy that interchanges need to be spaced in two-mile increments. Per that policy, potential interchange locations could include locations such as Avenue 25E, Avenue 27E, and Avenue 31E. A couple of interested parties have approached ADOT about building new interchanges, but ADOT does not have funding for and has not programmed the building of any new interchanges in the Wellton area. ADOT is, however, willing to work with the Town of Wellton and other government agencies in seeking outside funding for new interchanges. ADOT is also willing to work with private developers willing to fund improvements to I-8.

4. *Does YCAT have a line running from the Yuma International Airport or the Greyhound station out to Wellton?*

There used to be direct routes to both the Yuma International Airport and the Greyhound station; however, due to funding YCAT routes were consolidated. There are new locations along YCAT routes that are near both the Yuma International Airport and the Greyhound station.



5. *If additional railroad facilities are to be constructed, then both rail and vehicle traffic will increase. Will ADOT share a portion of the cost of new roadway facilities that will need to be constructed to handle the increased traffic?*

This depends on the location of the railroad and roadway facilities. If the railroads intersect with an ADOT facility, then ADOT may need to help share the cost with the railroad company of providing a roadway crossing over or under the railroad. Generally, the railroad will contribute five percent of the total cost of roadway crossings over or under the railroad and the community will need to fund the remaining 95 percent. If the roadway is an ADOT facility, there may be opportunities for ADOT to contribute funding for the crossing of the railroad. Once a total cost has been identified, funding opportunities can be identified and pursued.

6. *How did winter visitors factor into your calculations of the projected population?*

Winter visitors are not included in the population numbers presented; however, they are considered when calculating the projected traffic volume demands. We assume that the percentage of winter visitors as a portion of the total population will continue to decrease over the years as they become full time residents of Wellton.

7. *At-grade crossings are best for large farm equipment. Drivers have considerably less visibility when driving large farm equipment and having to use an overpass or underpass is more difficult than at-grade crossings.*

Railroads do issue permits to allow communities to construct new crossings, but they prefer these crossings to either go over or under the railroad. They are less likely to issue a permit for an at-grade crossing due to safety concerns.

8. *Can we put a limitation on the amount of time trains can stop on tracks blocking traffic? In an emergency situation, there is no way to access the other side of the tracks.*

Trains are operated by the railroad companies and regulated by the Federal Railroad Administration of the U.S. Department of Transportation. Neither ADOT nor the Town of Wellton has control over where and how often trains can stop.

9. *Avenue 27E does not cross the interstate because of the Coyote Wash development. If a bridge is constructed over the railroad tracks at Avenue 27E, where would the road lead? There is no possible connection on the south side of the interstate.*

The feasibility of bridges over the railroad and associated connecting roadways is something that will be considered and evaluated as part of this study.

10. *How do you fund roads that are used by unregistered vehicles such as golf carts and bicycles?*

Different funding sources can be applied for to assist in funding roadways, multiuse paths, bike lanes, etc. With a transportation plan in place, the town can begin to identify and pursue funding opportunities to implement the improvements.

11. *What is the build-out population projected for Yuma?*

ADOT recently completed a Statewide Transportation Planning Framework study which was accepted by the State Transportation Board in January 2010. This study projected the total population for Arizona to be near 14.8 million in the year 2050, with Yuma County's population being nearly 400,000. As of 2005, Yuma County's population was 173,000. More information regarding this study can be found on [www.bqaz.gov](http://www.bqaz.gov).



*12. Who is responsible for paying for a new interstate interchange?*

The responsible party depends on the reason for the construction of the interchange. If the interchange is driven by a new development, then the developer will need to fund the construction of the interchange. If there is already an interchange in place, ADOT is responsible for maintenance and improvements. If the need is driven by the community in general, the first step in the process is to get it into a regional transportation plan. Once it's included in a regional transportation plan, funding can be obtained at either a state or federal level. A study such as this one is the first step in the process to identify the need for a new interchange and get it included in the regional transportation plan.

*13. Does the federal government have grants available for improvements to Avenue 25E? It is because of the military that traffic has increased on this roadway. As such, the federal government/military should be responsible for funding improvements.*

A portion of this study will be to evaluate multiple funding opportunities for improvements. The results will be included in the final report and will be available once the study is complete in 2011.

*14. Are other areas of Arizona doing plans like this?*

Yes, this study is part of ADOT's Planning Assistance for Rural Areas (PARA) program. The program provides federal funding for rural communities to develop short-, mid-, and long-range transportation plans. Projects are awarded based on a competitive annual application process.

Comments Received Verbally During the Question-and-Answer Session

- Golf carts also pose a safety problem. In Sun City, golf carts are licensed and drive on roadways. Because of their low speed and lack of consideration for other motor vehicles, safety is a major concern.
- As a local farmer, safely transporting large farming equipment throughout town is a major concern. There are limited options regarding roadways in Wellton which we can use to move this equipment. We used to use Avenue 29E to cross the interstate; however, we are no longer able to get our equipment through because of the new concrete median implemented at the railroad crossing as part of the railroad quiet zone. There needs to be another point where we can safely cross the interstate and railroad tracks. The Avenue 31E overpass is also dangerous. Visibility while driving large equipment is poor.
- Frontage roads should be considered now before there is too much development.
- There is a need for additional YCAT service in Wellton. Many students at the Arizona Western College Campus are affected by the existing routes and schedules. Transportation is a big concern for the students coming from the Yuma area. It would also be nice to have YCAT service to Dateland.
- Senior citizens are also affected by the YCAT schedule. They need to be able to have access to medical services, grocery stores, etc., and it would be nice for there to be more routes in Wellton to assist the senior citizens.
- Avenue 27E is a good location to construct a bridge over the railroad tracks with connecting frontage roads for emergency services to cross the railroad tracks when trains are stopped.
- We need to construct a stoplight in town. Not everyone knows how to drive through a four-way stop.
- The roadways in Wellton are very narrow and large trucks have a hard time navigating turns. We need to improve this so that trucks stop driving on sidewalks and curbs.
- There needs to be a way to provide access around Interstate 8 in situations where accidents close the freeway. Right now, traffic is directed onto Avenue 29E and it gets very congested with trains and freeway traffic.



- It would be nice to have bike lanes along Avenue 29E. As we become more conscious about the environment, bicyclists on the road will become more of an issue.
- I'm not sure that rail would solve the problems we have in this area. It's nice to be able to ride a train for long distances, but how do you get around once you arrive at your destination? In order for rail to be a reasonable solution, there needs to be a local transportation system. San Diego has a trolley system which goes to multiple places throughout town.
- We should widen the interstate bridge at Avenue 29E like 16<sup>th</sup> Street in Yuma.
- Please consider improving ADA compliance throughout town.

#### Verbal Comments from the Mayor

- The cost of constructing a bridge over the railroad tracks is very high. There are many options that the town has considered, including a bridge at Avenue 27E, Dome Street, and William Street. By constructing a new bridge, farmers will be able to use it to relocate equipment.
- A study on commuter rail between Phoenix, Tucson, and Yuma is currently underway; but at this time there are no plans to build.

#### Written Responses Received to Survey Questions

1. What are your top three transportation issues in and around the Wellton area?

- (1)Bus services. (2)Railroad crossing bridge. (3)Many Road Improvements.
- (1)Emergency freeway access at Avenue 25E and Avenue 31E. (2)Safe walking and bicycling paths. (3)Frontage roads from Avenue 25E to Avenue 31E on the north side.
- (1)Safely transporting farm equipment to and from fields.
- (1)Railroad crossings. (2)Routing of industrial/farm equipment. (3)Golf cart/bicycle/foot traffic.
- (1)Railroad grade separation. (2)Road paving. (3)Sidewalk and trails.
- (1)Bike trails. (2)Bus transit. (3)Golf paths.
- (1)Bike and walking trails. (2)Bus transit. (3)Golf cart paths.
- (1)Rail traffic. (2)Farm equipment.

2. Do you think that public transportation options, such as bus service, are important to you and your community? Please tell us why.

- To me not so much. However, low cost transportation is always good for the community.
- Minor.
- Bus service is a big need. We have many college students who need to ride in to Arizona Western College Main Campus.
- Bus service convenient to college schedules should have priority to general service.
- Yes. Bus service to Yuma is important to Wellton.
- Movement for the elderly and poor.
- YCAT is important for all the reasons mass transit is a favored option. Is a small local mass transit (bus system) feasible?



3. What type of pedestrian facilities would you like to see in your community? These include facilities used for non-motorized transportation such as walking and biking, widened shoulders, new multiuse pathways, trails, sidewalks, bike lanes, etc.

- We need widened shoulders for biking from Avenue 20E to Avenue 32E. "Bike lanes". Trails in mountain areas.
- I would like to see more paved bike trails in the eastern part of town.
- More bike and walking trails.
- Multiuse paths are getting a lot of use. I could see more paths as a positive.

4. What is the number one traffic problem in the community that you feel needs to be addressed?

- Railroad crossings.
- The railroad crossing. We need a bridge.
- Crossing of railroad tracks.

5. If you had \$100 to spend on transportation improvements how much would you spend on each of the following?

Transportation Mode	Average \$ Amount	Range of \$ Amount
Bike paths/lanes	\$17	\$0 - \$50
Transit	\$20	\$0 - \$50
Sidewalks	\$10	\$0 - \$33
Railroad Crossing Improvements	\$36	\$0 - \$70
Traffic Signals	\$3	\$0 - \$10
Freeway Interchanges	\$13	\$0 - \$60
Roundabout	\$1	\$0 - \$5
Other	\$0	n/a

6. Please feel free to share any additional comments with us!

- If there is concern with golf carts, Sun City is an example of what not to do.
- An at-grade crossing of the railroad tracks at Avenue 27E connecting Highway 80 with County 11<sup>th</sup> Street would be rather inexpensive alternative route than through town.
- Wellton needs better emergency access to town from I-8. One entrance is too little. Another exit on I-8 at Avenue 25E would relieve congestion and serve the Coyote Wash population as well as Wellton proper. Avenue 25E has tremendous traffic and is in need of study. It serves military and residential traffic.



Arizona Department of Transportation and the Town of Wellton  
Wellton Long-Range Transportation Study  
Public Open House 1: Summary  
November 10, 2010



## Appendix: Publicity and Meeting Materials

# Wellton

## Long-Range Transportation Plan



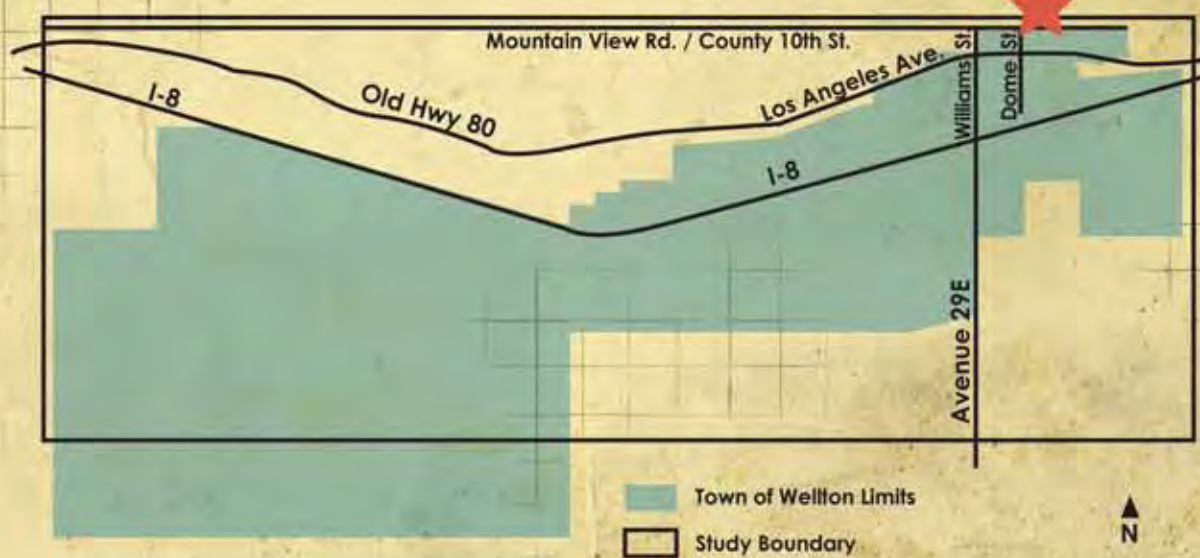
# PUBLIC OPEN HOUSE



Open House Location  
Town of Wellton  
Community Center

*The* Arizona Department of Transportation and the Town of Wellton are working to develop a multimodal Long-Range Transportation Plan for a 44 square-mile area in the vicinity of the Town of Wellton. The multimodal plan will consider pedestrian, bicycle, automobile, and public transit needs for 5, 10, and 20 year planning periods. This plan will recommend projects that will address local multimodal transportation needs and will serve as a guide for future community development, project funding and project implementation.

*Join us* and help identify areas where transportation improvements are most desired and needed within and around the Town of Wellton.



*Wellton*  
Long-Range Transportation Plan

## PUBLIC OPEN HOUSE

WEDNESDAY, October 27

5 p.m. to 7 p.m. Brief presentation to begin at 5:15 p.m.

TOWN OF WELLTON COMMUNITY CENTER  
10234 Dome St. Wellton, AZ 85356

[http://www.azdot.gov/mpd/systems\\_planning/wellton.asp](http://www.azdot.gov/mpd/systems_planning/wellton.asp)



Please take a meeting reminder



*For more information:*

Contact Gaby Gonzalez at [ggonzalez@azdot.gov](mailto:ggonzalez@azdot.gov) or 928.699.8983 or visit [http://www.azdot.gov/mpd/systems\\_planning/wellton.asp](http://www.azdot.gov/mpd/systems_planning/wellton.asp).

[<Back](#) [Print](#)

# Wellton

## Long-Range Transportation Plan

### E-MAIL UPDATE



October 26, 2010

### Arizona Department of Transportation and the Town of Wellton Wellton Long-Range Transportation Plan Public Open House

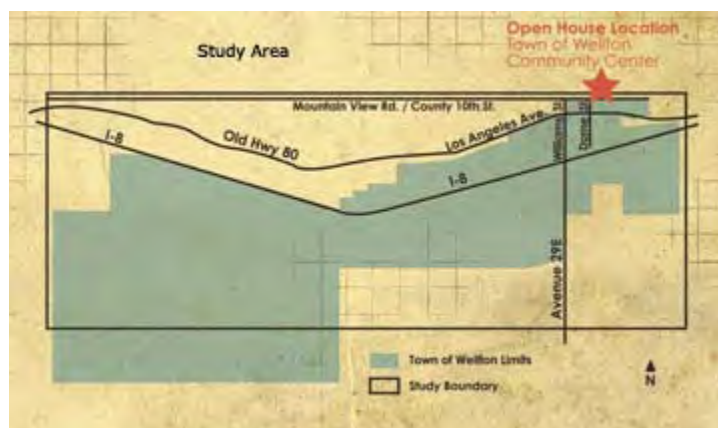
The Arizona Department of Transportation is conducting a multimodal transportation planning study for the Town of Wellton and would like the local community to provide their input. Please join us and help us plan for the future of Wellton!

The Wellton Long-Range Transportation Plan covers a 44 square-mile area which includes the town limits as well as portions of Yuma County. The plan will evaluate pedestrian, bicycle, automobile and public transit needs for the next 20 years and will serve as a guide for future community development.

#### Public Open House

**When:** Wednesday, Oct. 27  
5 p.m. to 7 p.m.  
(A brief presentation  
will begin at 5:15 p.m.)

**Where:** Wellton Community Center  
10234 Dome Street  
Wellton, AZ 85356

[Printable Version](#)

For more information regarding this project, please contact Gaby Gonzalez, Yuma District Public Information Officer, at 928.699.8983 or e-mail [ggonzalez@azdot.gov](mailto:ggonzalez@azdot.gov) or visit [www.azdot.gov/PARA/wellton.asp](http://www.azdot.gov/PARA/wellton.asp).

<http://www.azdot.gov/PARA/Wellton.asp>

[Forward email](#)

# Wellton

Long-Range Transportation Plan



The Arizona Department of Transportation and the Town of Wellton are working to develop a multimodal Long-Range Transportation Plan for a 44 square-mile area in the vicinity of the Town of Wellton. The multimodal plan will consider pedestrian, bicycle, automobile, and public transit needs for 5, 10, and 20 year planning periods. This plan will recommend projects that will address local multimodal transportation needs and will serve as a guide for future community development, project funding and project implementation.

*Join us* and help identify areas where transportation improvements are most desired and needed within and around the Town of Wellton.

*Public Open House*

WEDNESDAY,  
October 27

5 p.m. to 7 p.m. Brief presentation to begin at 5:15 p.m.

TOWN OF WELLTON COMMUNITY CENTER

10234 Dome St. Wellton, AZ 85356

*For More Information*

Contact Gaby Gonzalez at [ggonzalez@azdot.gov](mailto:ggonzalez@azdot.gov)  
or 928.699.8983 or visit  
[http://www.azdot.gov/mpd/systems\\_planning/wellton.asp](http://www.azdot.gov/mpd/systems_planning/wellton.asp)



---

For Immediate Release: October 19, 2010  
Contact: ADOT Media Relations  
[news@azdot.gov](mailto:news@azdot.gov) or 1.800.949.8057

## **Public's input wanted in the Wellton transportation study**

YUMA – The Arizona Department of Transportation has begun a study to produce a long-range transportation plan for the Town of Wellton. The plan will recommend multimodal transportation improvements for planning periods of five, 10, and 20 years. Objectives of the study are to identify areas where transportation improvements are needed. Once a plan is in place, the Town of Wellton can pursue funding opportunities to help implement improvement projects.

ADOT and the Town of Wellton will be hosting a public open house on Wednesday, October 27 to present information on the existing and future conditions and needs of Wellton's transportation system. The community is encouraged to attend and provide input which will be used to develop future transportation recommendations.

The open house is scheduled between 5 p.m. and 7 p.m. at the Town of Wellton Community Center located at 10234 Dome Street in Wellton. A brief presentation will begin at 5:15 p.m. and study team members will be available to discuss the study one-on-one with participants.

This is the first of two public open houses scheduled for the study. The second open house will be held in early 2011 to present information and findings related to the plan for improvements.

For more information contact Gaby Gonzalez, ADOT Public Information Officer, [ggonzalez@azdot.gov](mailto:ggonzalez@azdot.gov).

###

###



What are your top three transportation issues in and around the Wellton area?

1. \_\_\_\_\_
2. \_\_\_\_\_
3. \_\_\_\_\_

Do you think that public transportation options, such as bus service, are important to you and your community? Please tell us why.

\_\_\_\_\_

\_\_\_\_\_

\_\_\_\_\_

What type of pedestrian facilities would you like to see in your community? These include facilities used for non-motorized transportation such as walking and biking and can be widened shoulders, new multiuse pathways, trails, sidewalks, bike lanes, etc.

\_\_\_\_\_

\_\_\_\_\_

\_\_\_\_\_

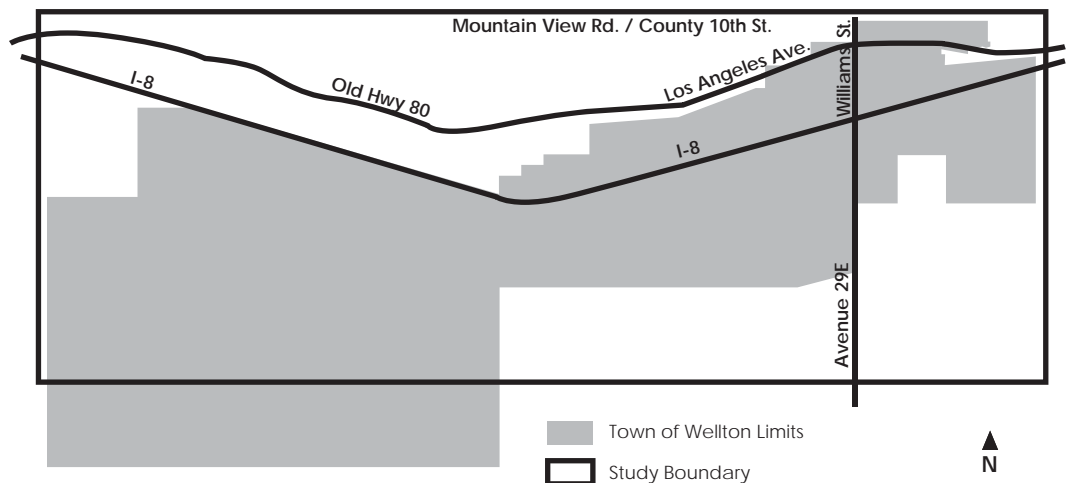
What is the number one traffic problem in the community that you feel needs to be addressed?

\_\_\_\_\_

\_\_\_\_\_

\_\_\_\_\_

Project Study Area





Arizona Department of Transportation and the Town of Wellton  
 Wellton Long-Range Transportation Plan  
 Public Open House 1: Comment Form  
 October 27, 2010 - 5 p.m. to 7 p.m. - Wellton Community Center



If you had \$100 to spend on transportation improvements how much would you spend on each of the following?

- |                                      |                            |
|--------------------------------------|----------------------------|
| \$___ Bike paths/lanes               | \$___ Traffic Signals      |
| \$___ Transit                        | \$___ Freeway Interchanges |
| \$___ Sidewalks                      | \$___ Roundabouts          |
| \$___ Railroad Crossing Improvements | \$___ Other: _____         |

Please feel free to share any additional comments with us!

---



---



---



---



---



---

Thank you for coming this evening!

Name: \_\_\_\_\_

Address: \_\_\_\_\_

City: \_\_\_\_\_ Zip: \_\_\_\_\_

Email Address: \_\_\_\_\_

Completed comment forms can be submitted to the project team at the completion of the public meeting or mailed/faxed/mailed to the project team no later than Wednesday, November 10.

Mail: Amy Rosar	Fax: 602-368-9644
c/o KDA Creative	Email: amy@kdacreative.com
4545 E. Shea Blvd., Ste 210	
Phoenix, AZ 85028	

More information can be found by visiting: [www.azdot.gov/PARA/Wellton.asp](http://www.azdot.gov/PARA/Wellton.asp)

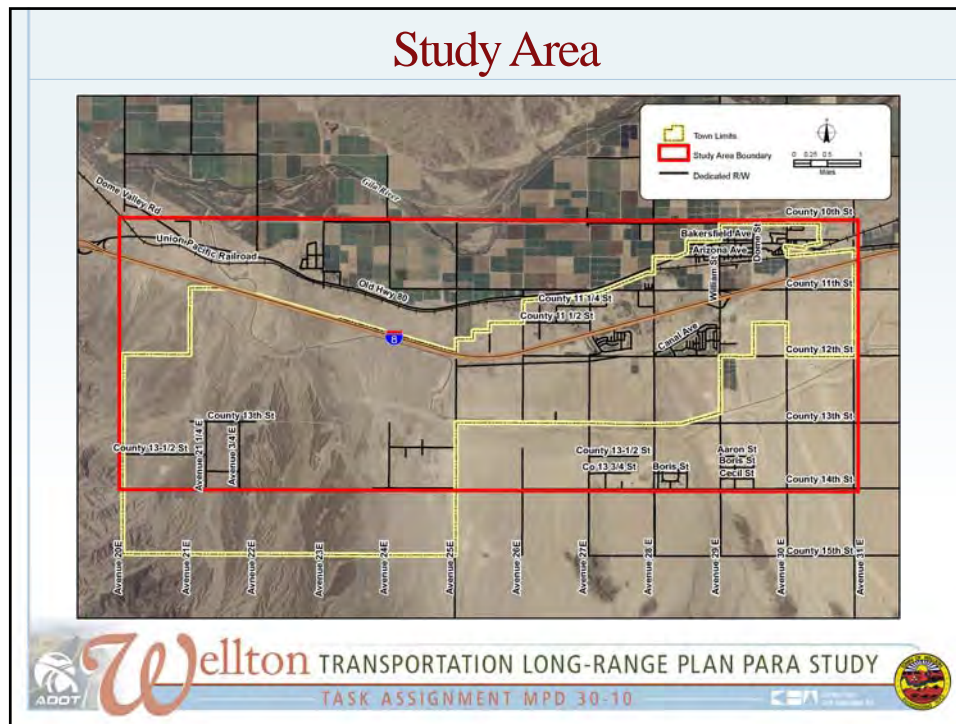
Completion of this comment sheet is completely voluntary. All comments provided will become part of the study's documentation. Under state law, any identifying information provided will become part of the public record, and as such, must be release to any individual upon request.



## Study Objectives

- ▲ Document existing transportation needs
- ▲ Project future travel demands
- ▲ Identify future transportation needs
- ▲ Develop and evaluate multimodal alternatives
- ▲ Recommend improvements
- ▲ Obtain public input
- ▲ Document study findings






- ### Current Needs
- ▲ Pave roadways
  - ▲ Provide additional freeway interchanges
  - ▲ Provide additional railroad crossings
  - ▲ Expand Yuma County Area Transit (YCAT) and secure stable funding
  - ▲ Provide pedestrian and bicycle facilities on most roadways
- The Wellton logo and project title 'Wellton TRANSPORTATION LONG-RANGE PLAN PARA STUDY TASK ASSIGNMENT MPD 30-10' are at the bottom.

### Population and Employment Projections

Study Area Category	2008	2033	Build-out
Population	2,886	4,735	102,995
Employment	930	1,894	41,198

 Wellton TRANSPORTATION LONG-RANGE PLAN PARA STUDY  
TASK ASSIGNMENT MPD 30-10

- ### 2033 Future Needs
- ▲ Pave roadways
  - ▲ Potential traffic improvements at Old Highway 80/William Street intersection
  - ▲ New and/or reconstructed freeway interchanges and railroad crossings
  - ▲ Expand YCAT and secure stable funding
  - ▲ Provide pedestrian and bicycle facilities on most roadways
-  Wellton TRANSPORTATION LONG-RANGE PLAN PARA STUDY  
TASK ASSIGNMENT MPD 30-10

## Build-out Future Needs

- ▲ Comprehensive, interconnected roadway network
- ▲ New and/or reconstructed freeway interchanges and railroad crossings
- ▲ Expand YCAT and secure stable funding
- ▲ Provide pedestrian and bicycle facilities on most roadways



## Progress to Date

- ▲ Documented existing transportation needs
- ▲ Projected future travel demands
- ▲ Identified future transportation needs
- ▲ Obtained input from stakeholder interviews and technical advisory committee



## Next Steps

- ▲ Develop and evaluate multimodal alternatives  
(Nov.-Dec. 2010)
- ▲ Recommend draft improvements  
(Jan.-Feb. 2011)
- ▲ Conduct 2<sup>nd</sup> public open house to obtain public  
input on alternatives evaluation and draft  
recommended improvements  
(Feb. 2011)
- ▲ Document study findings in Final Report  
(Mar.-Jun. 2011)

