

Public Open House Meeting No. 1

October 27, 2010

Wellton

Transportation Long-Range Plan

PARA STUDY

Task Assignment MPD 30-10

REDUCED
SPEED
AHEAD



Prepared by:

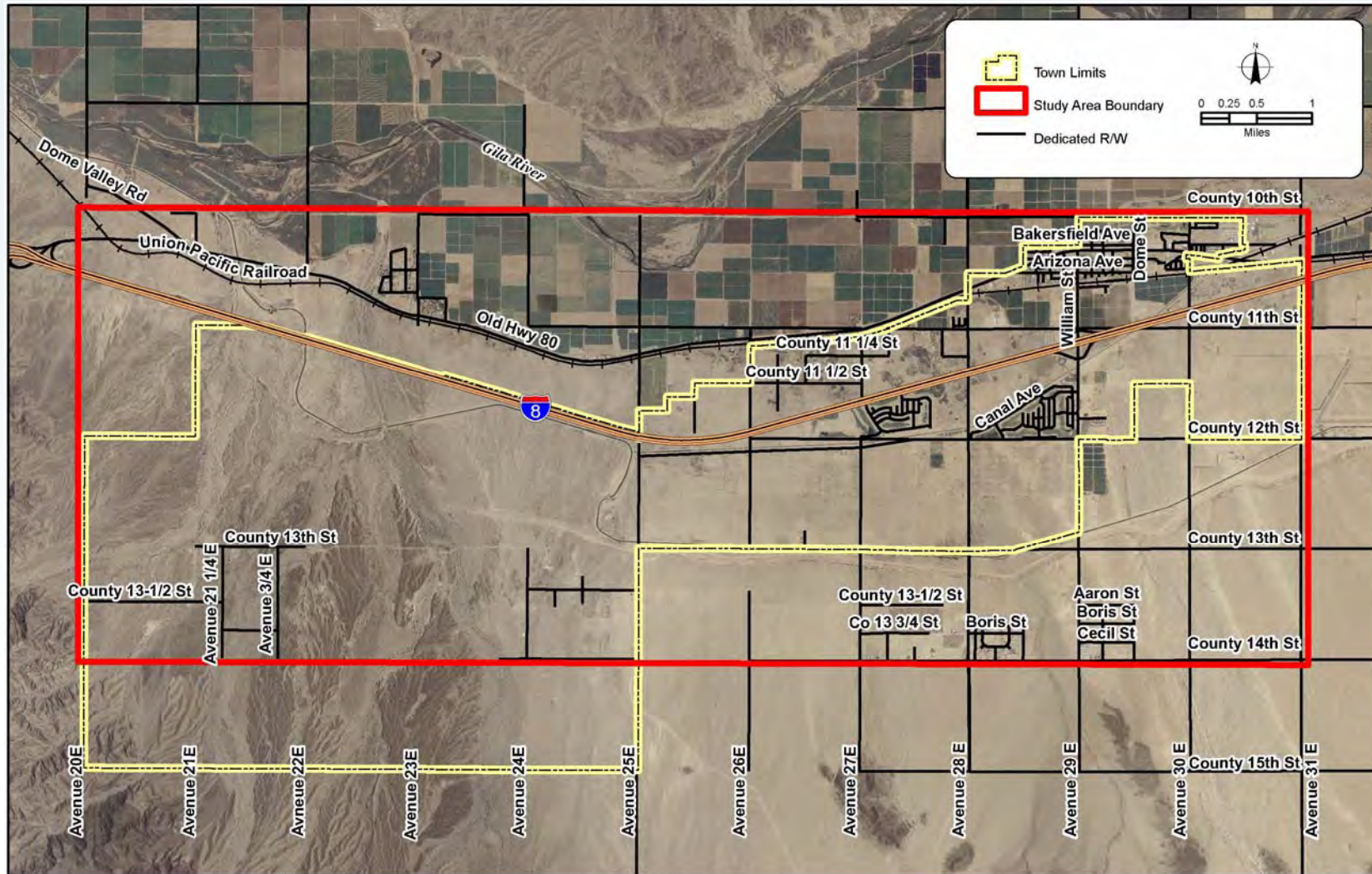
 Kimley-Horn
and Associates, Inc.

Prepared for:
Arizona Department of Transportation

Study Objectives

- ▲ Document existing transportation needs
- ▲ Project future travel demands
- ▲ Identify future transportation needs
- ▲ Develop and evaluate multimodal alternatives
- ▲ Recommend improvements
- ▲ Obtain public input
- ▲ Document study findings

Study Area



Current Needs

- ▲ Pave roadways
- ▲ Provide additional freeway interchanges
- ▲ Provide additional railroad crossings
- ▲ Expand Yuma County Area Transit (YCAT) and secure stable funding
- ▲ Provide pedestrian and bicycle facilities on most roadways

Population and Employment Projections

Study Area Category	2008	2033	Build-out
Population	2,886	4,735	102,995
Employment	930	1,894	41,198

2033 Future Needs

- ▲ Pave roadways
- ▲ Potential traffic improvements at Old Highway 80/William Street intersection
- ▲ New and/or reconstructed freeway interchanges and railroad crossings
- ▲ Expand YCAT and secure stable funding
- ▲ Provide pedestrian and bicycle facilities on most roadways

Build-out Future Needs

- ▲ Comprehensive, interconnected roadway network
- ▲ New and/or reconstructed freeway interchanges and railroad crossings
- ▲ Expand YCAT and secure stable funding
- ▲ Provide pedestrian and bicycle facilities on most roadways

Progress to Date

- ▲ Documented existing transportation needs
- ▲ Projected future travel demands
- ▲ Identified future transportation needs
- ▲ Obtained input from stakeholder interviews and technical advisory committee

Next Steps

- ▲ Develop and evaluate multimodal alternatives (Nov.-Dec. 2010)
- ▲ Recommend draft improvements (Jan.-Feb. 2011)
- ▲ Conduct 2nd public open house to obtain public input on alternatives evaluation and draft recommended improvements (Feb. 2011)
- ▲ Document study findings in Final Report (Mar.-Jun. 2011)

