

North Havasu Area Transportation Study

First Open House



June 2, 2009

Welcome!

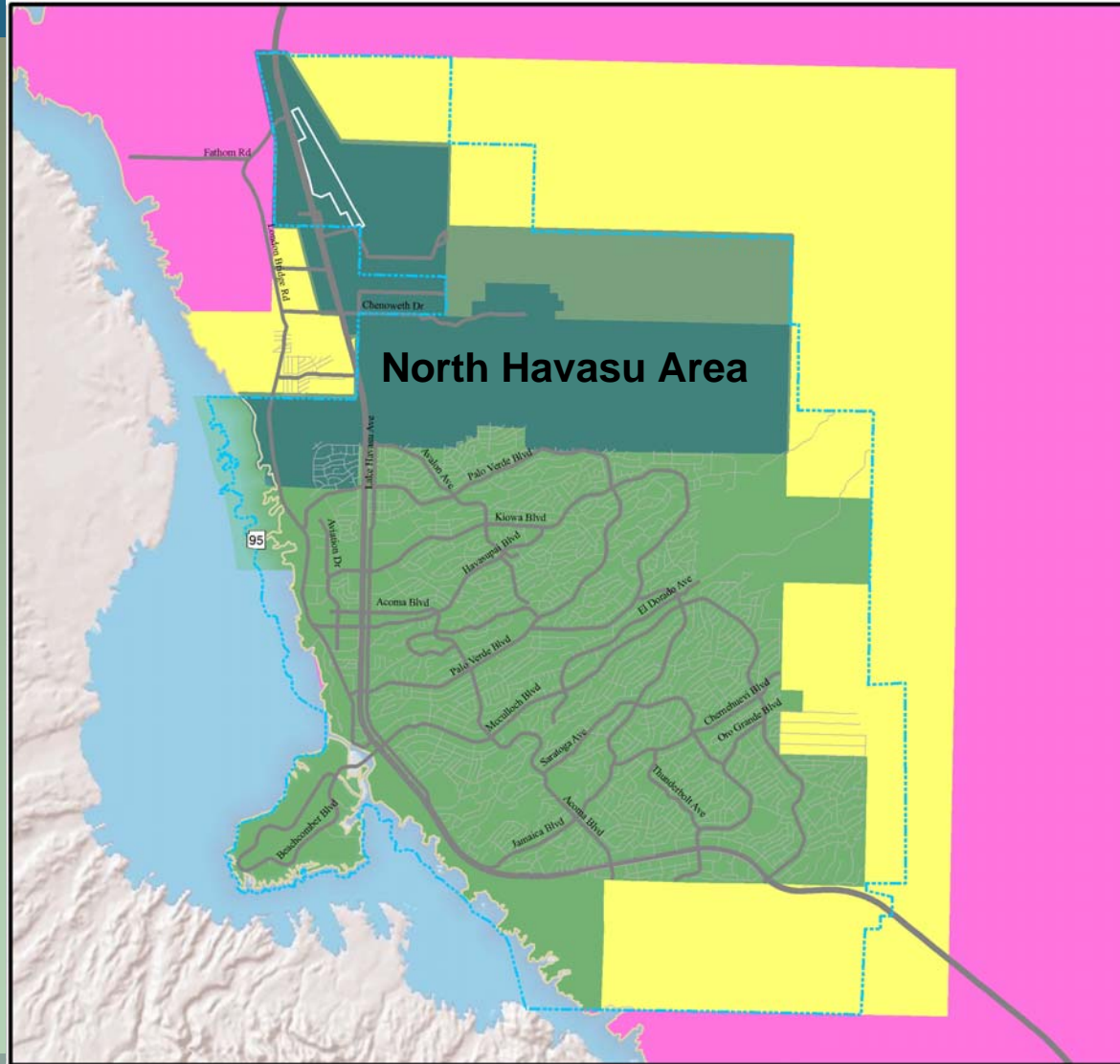
- ◆ Charlene FitzGerald, ADOT Project Manager
- ◆ Mark Clark, Lake Havasu City Project Manager

Purpose of Study

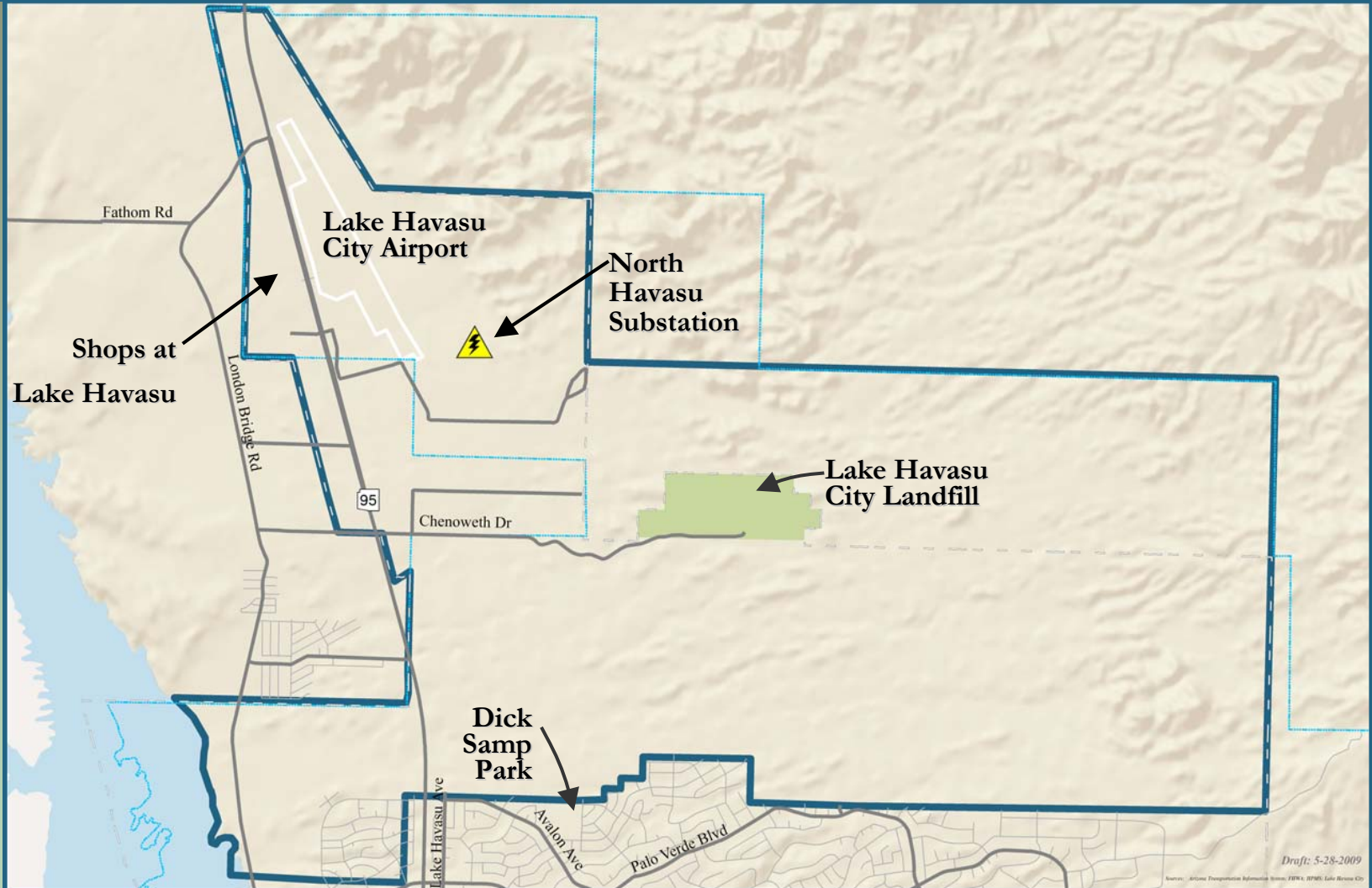
Produce North Havasu Area Transportation Plan

- ◆ Major Road Network that Responds to:
 - Existing Major Roads
 - SR 95 Realignment Corridor
 - Land Use and Economic Development Planning
- ◆ Plans for 2015, 2020, and 2030
- ◆ Transportation Improvement Program for 2015
- ◆ Multimodal:
 - Transit and Pedestrian, Bicycle, and Equestrian Trails
 - Coordination with Airport Master Plan
- ◆ Access Management Strategies

Lake Havasu City Area Context



North Havasu Study Area



Study Progress

Tasks

✓ Define Current Conditions

- ◆ Define Future Conditions
- ◆ Develop Plan for Improvements

- ✓ Gather and Review Available Material
- ✓ Prepare Inventory of Current Conditions
- ✓ Conduct Stakeholder Meetings
- ✓ Develop Traffic Analysis Zones to use in Sketch Planning Model

Public Involvement

- ◆ First Open House (June)
- ◆ Second Open House (Late November)

Methods and Data

- ◆ Inventory Data from more than ten Agencies
- ◆ Expertise of Technical Advisory Committee
- ◆ Plans and Studies:
 - SR 95 Realignment, Lake Havasu Area Study
 - 2005 Small Area Transportation Study
- ◆ Trend Analysis and Synthesis
- ◆ Travel Simulation

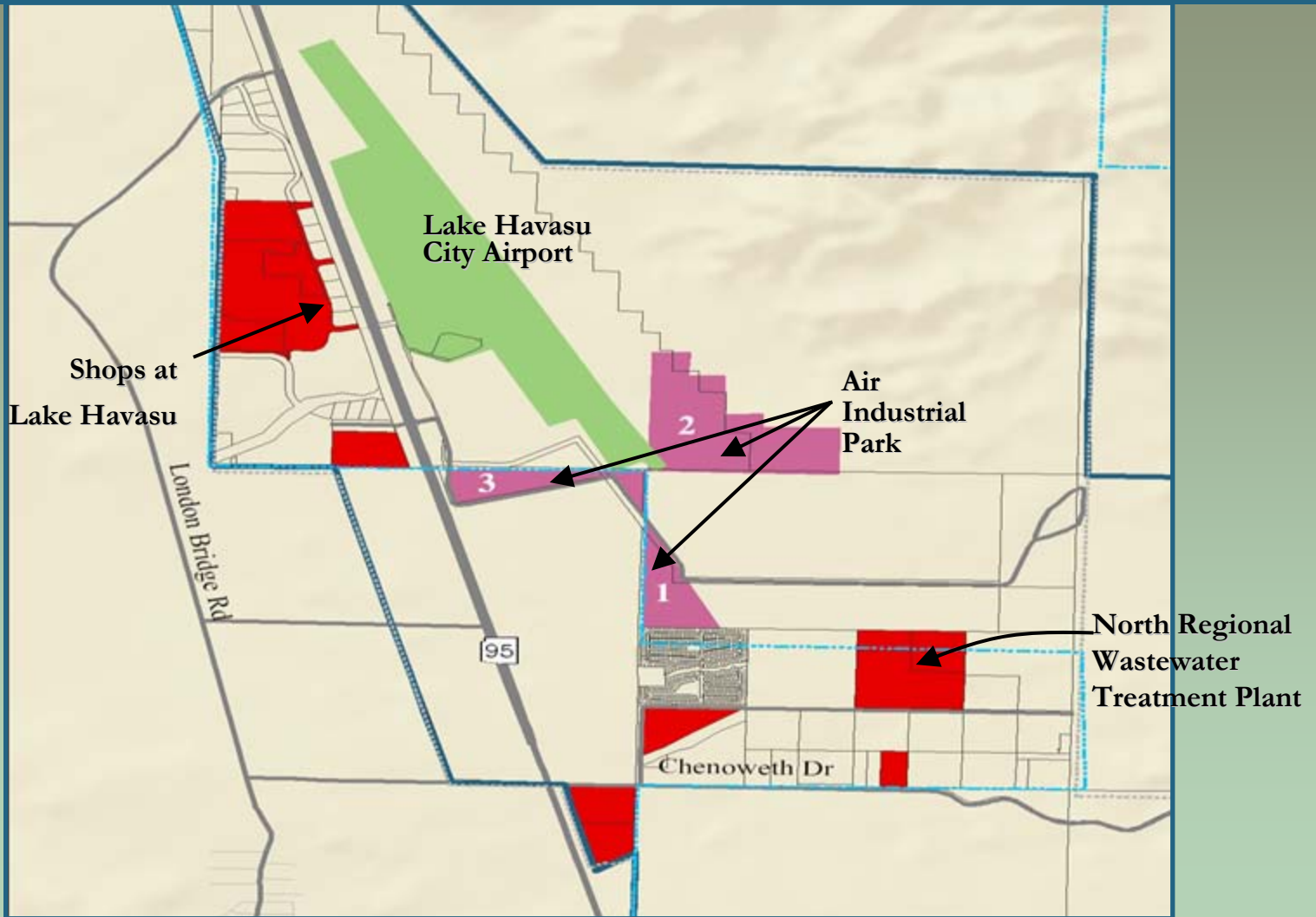
Recent Trends

- ◆ Lake Havasu City grew in Population from 42,000 to 55,500 in the Past Eight Years
- ◆ 85 percent of original 33,000 lots are developed
- ◆ North Havasu Area's development is along SR 95
- ◆ Industrial Park and Water/Wastewater Services are underway

POPULATION CHANGE 2000 TO 2008

ARIZONA	29.2%
MOHAVE COUNTY	32.8%
LAKE HAVASU CITY	32.2%
BULLHEAD CITY	22.0%
KINGMAN	43.6%

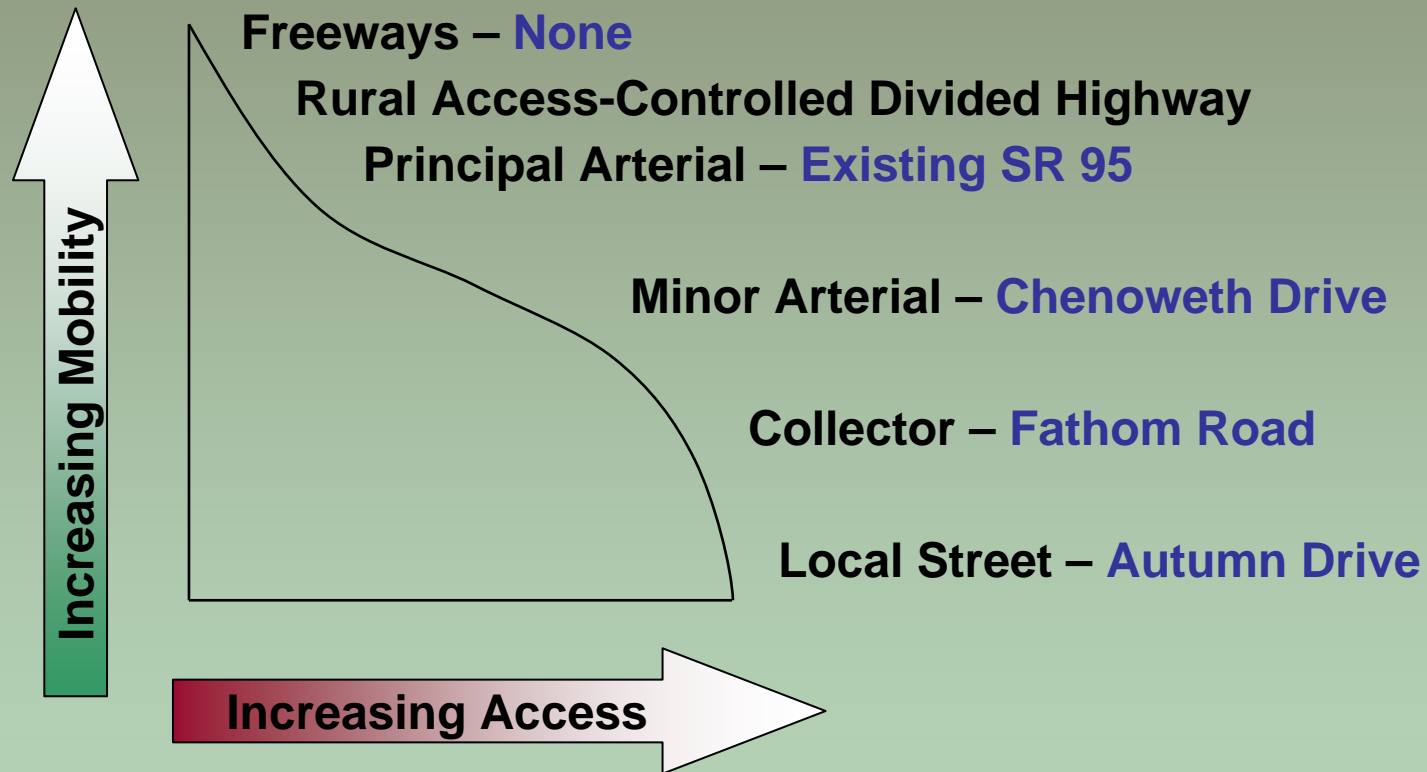
Activity Centers (West)



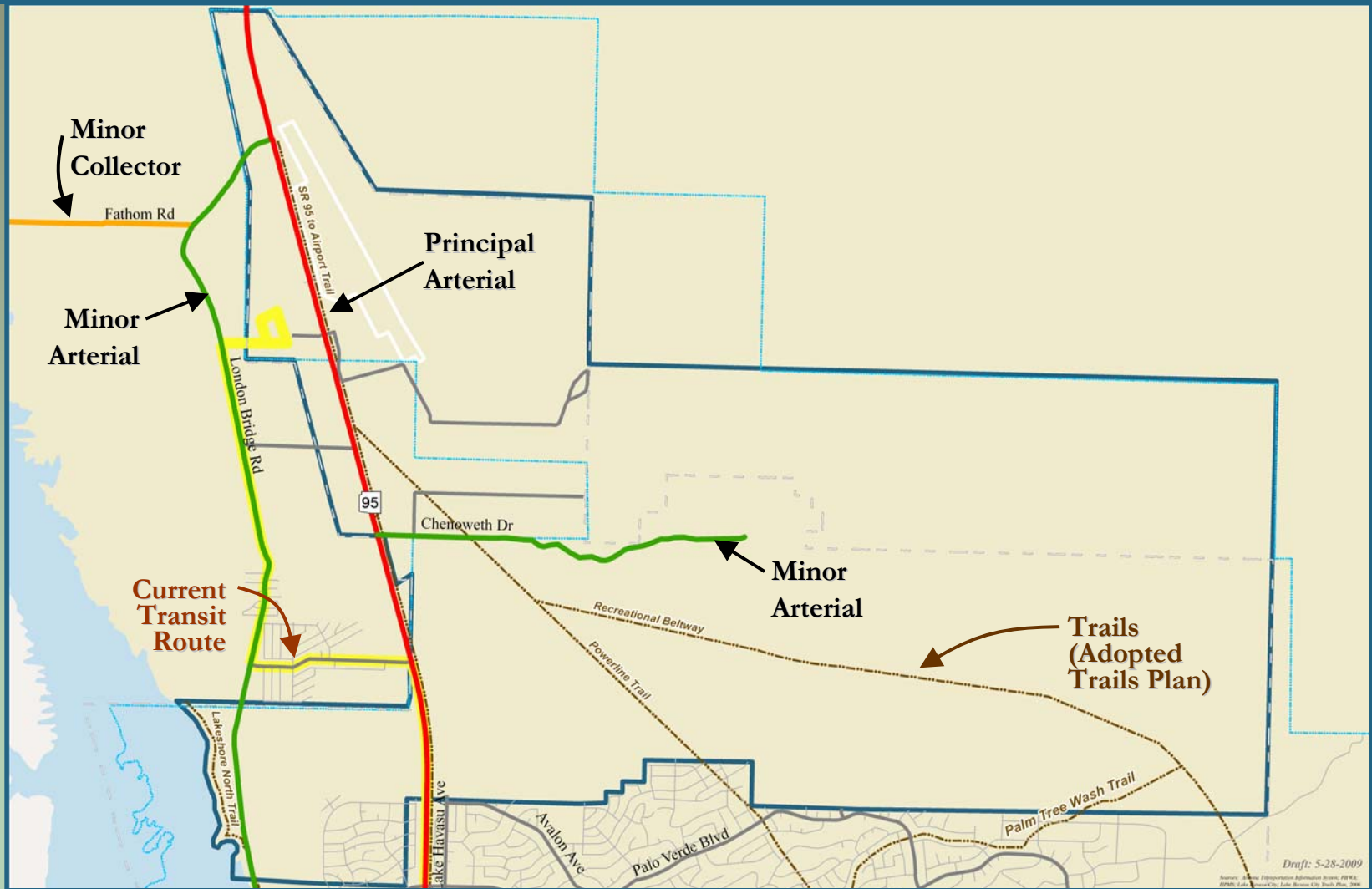
Potential Development (East)



Road Functional Classification



Committed Network



Access Management

- ◆ Corridor Preservation
- ◆ System Relates to Timing of Realignment Construction
- ◆ Interchanges, Intersections, Underpasses, Frontage Roads
- ◆ Intersections of Interior Streets some with Activities that draw traffic, some not

Stakeholder Comments

- ◆ Arterials in a Grid Pattern, but Accommodate Slopes
- ◆ Arterials not as Curved as “Plate of Spaghetti”
- ◆ Keep a “Net” Low Density, with a Mix of Densities and Open Space
- ◆ Havasu Area Transit Service to New Activity Centers

Stakeholder Comments, continued

- ◆ Develop Trails as in some Recent Lake Havasu City Developments
- ◆ Provide Clear Signs throughout
- ◆ Good Access to Commercial and Industrial Areas
- ◆ Widen Arterial Pavements for a Bicycle Lane in Each Direction
- ◆ Mountain Protection Areas, Drainage, and Special Environmental Areas Respected

Next Steps

- ◆ Future Socioeconomic Projections
- ◆ Assumptions Concerning Phasing of State Trust Land Sales
- ◆ Travel Demand Projections

Public Comment Opportunities

North Havasu Area Transportation Plan Planning Assistance for Rural Arizona

Public Meeting - June 2, 2009

Lake Havasu Aquatic Center, 100 Park Avenue, Lake Havasu City, Arizona, 86403



COMMENT SHEET

You may leave this comment sheet with us tonight, or send it by June 22, 2009, to
ADOT c/o Coralie Cole, Jacobs Engineering, 101 North 1st Avenue, Suite 3100,
Phoenix, AZ 85003; or Coralie.Cole@jacobs.com; fax 602-253-1202.

THANKS FOR YOUR INPUT!

◆ ADOT project website: <http://mpd.azdot.gov/planning/havasu.php>

Public Comment, continued

◆ For additional information:

- Charlene FitzGerald, ADOT Multimodal Planning Division, phone: 602.712.6196, email: cfitzgerald@azdot.gov
- Michele Beggs, Public Information Officer, ADOT Kingman District, phone: 928.681.6054, email: mbeggs@azdot.gov



◆ Questions / Answers with Team Members

◆ Second Open House, November Comment on draft plan

North Havasu Area Transportation Study

First Open House



June 2, 2009