

ARIZONA DEPARTMENT OF TRANSPORTATION and the TOWN OF CLARKDALE



Clarkdale Transportation Study

Public Open House 1 • Study Fact Sheet
August 26, 2010

Study Background

Recently Clarkdale has experienced substantial growth due to new housing developments. Once complete, these developments will add traffic to Clarkdale's existing transportation system. Although the current economic condition has affected growth, the Town and Yavapai County are projecting steady growth in the future. Improvements are needed to maintain the efficient system Clarkdale has today.

Proactive Planning

The Arizona Department of Transportation (ADOT) is working with the Town of Clarkdale to develop a transportation plan to identify multimodal transportation needs within the Town. The plan will recommend transportation improvements for five-, ten-, and twenty-year planning horizons for roads, transit, bicycle, and pedestrian facilities.

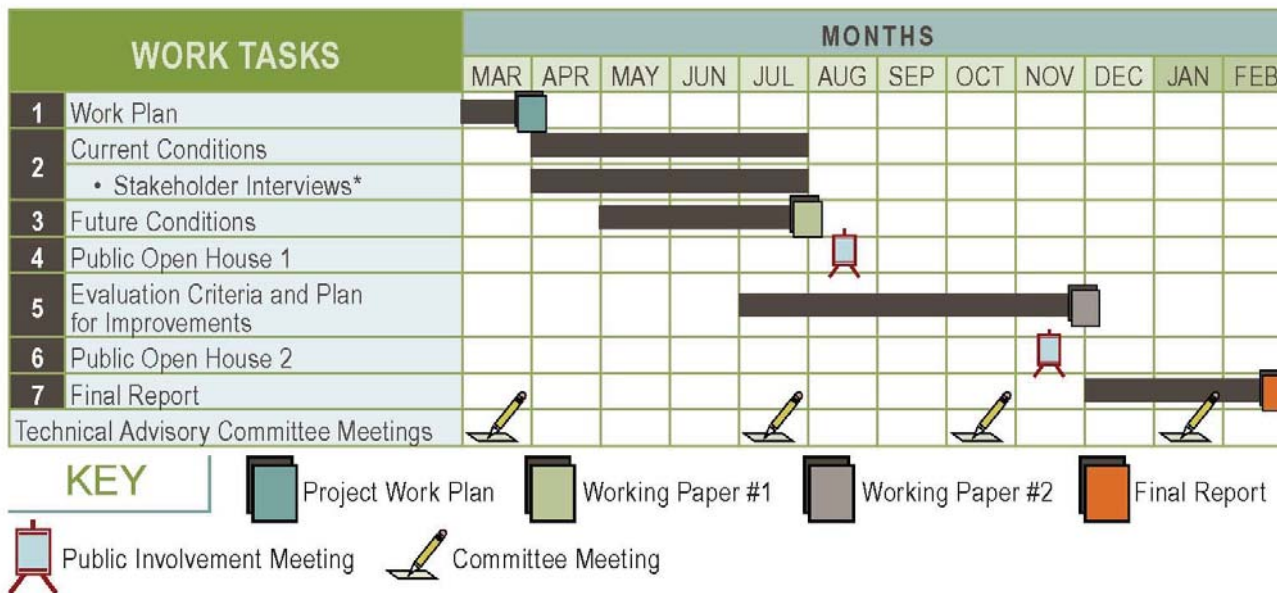
What's ADOT's Role?

ADOT's Planning Assistance for Rural Areas (PARA) program is sponsored by the Multimodal Planning Division and provides funding for transportation planning studies in rural areas.

What's YOUR Role?

ADOT and the Town are asking for your input regarding transportation needs in your community. Please review the map and list of preliminary needs and deficiencies on the opposite side of this fact sheet. Your comments will be included in the final report.

Study Schedule

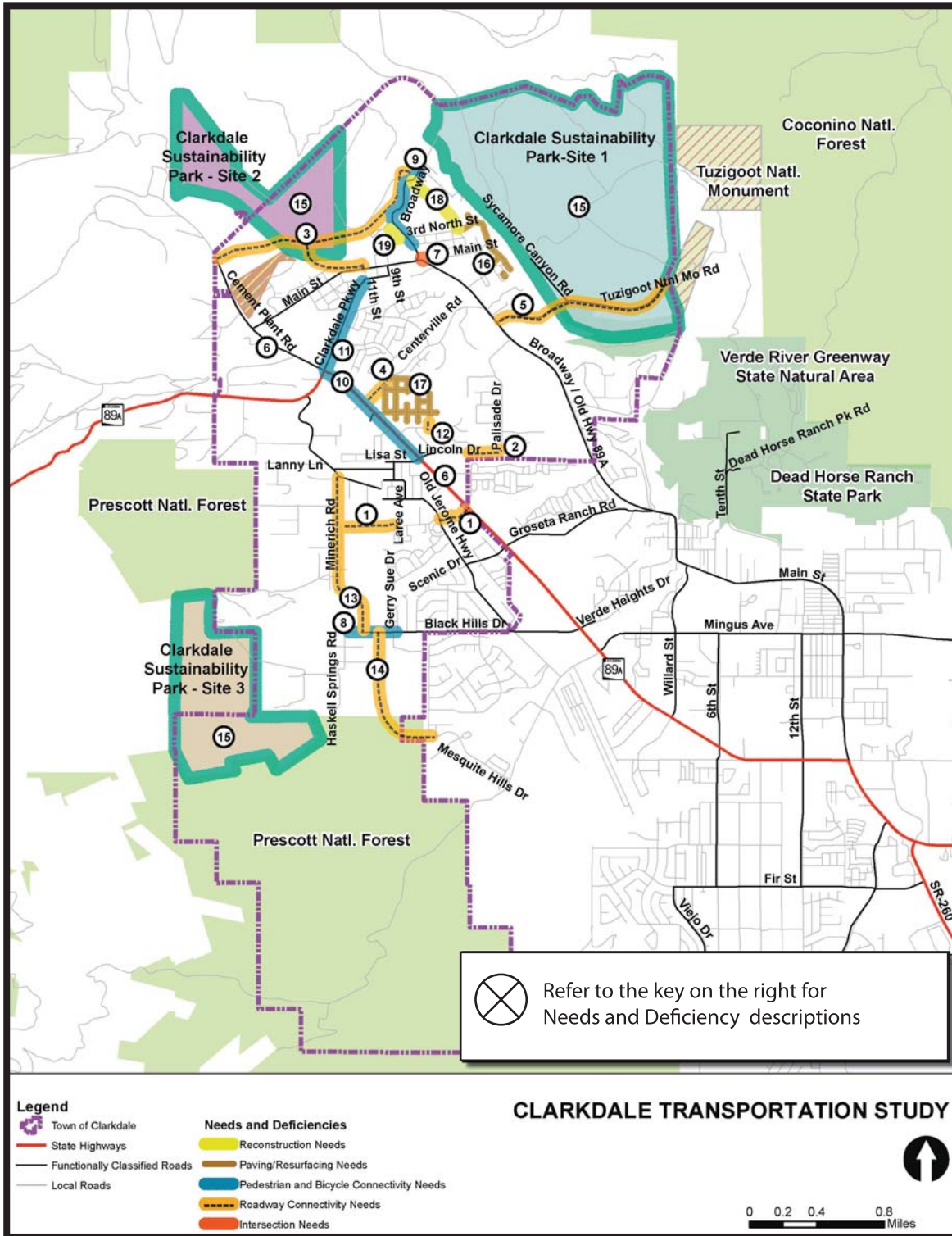


*One-on-one stakeholder interviews with the Town and other agencies, including natural resource and land management agencies, economic development, and bicycle stakeholder groups

Be sure to **complete and submit**
your **comment form!**

Keep in Touch

For more information regarding this study, please contact **Bill Pederson**, ADOT Communication and Community Partnerships Division, at **bpederson@azdot.gov** or **602-712-8069**.



Transportation **Needs and Deficiencies** are areas identified in which **enhancements or improvements** are needed to maintain a safe and efficient transportation system. The list below identifies **19 specific areas** which are addressed in this **transportation study**.

1	Extend Mescal Spur Rd. west to Minerich Rd. and east to SR 89A to improve connectivity and facilitate emergency vehicle access and response
2	Improve connectivity between Lincoln Dr. and Palisade Dr., to facilitate access
3	Facilitate truck access to Clarkdale Metals and Salt River Materials Group industrial areas via new industrial road and 11st St. connectors
4	Improve connectivity between Old Highway 89A and SR 89A in the vicinity of Centerville Rd.
5	Improve multimodal access and mobility to Tuzigoot National Monument
6	Alternate routes to SR 89A may be needed to serve Salt River Materials Group and Clarkdale Metals
7	Improve Broadway/Main St intersection (included in the FY 2010-2014 Transportation Improvement Program) - a roundabout is planned
8	Improve sidewalk connectivity on Black Hills Drive from Haskell Springs Rd. to Gerry Sue Dr.
9	Improve sidewalk connectivity and lighting on Broadway from 2nd North St. to Patio Park area
10	Improve pedestrian accommodations and address sidewalk discontinuities between SR 89A roundabouts. ADOT received a grant for the SR 89A Pedestrian Sidewalk Enhancement Project
11	Enhance bicycle and pedestrian travel between downtown Clarkdale and SR 89A. The Town received a grant to construct bicycle lanes and a sidewalk along the south side of Clarkdale Parkway (11th St.) from SR 89A to 11th St.
12	Improve connectivity between Calle Carillo to Mingus Shadows Dr.
13	Upgrade Minerich Rd. and extend it south to Black Hills Dr. to improve connectivity and facilitate emergency vehicle access and response
14	Improve connectivity between Black Hills Dr. and Mesquite Hills Dr.
15	Three sites are being reviewed as potential locations for the Clarkdale Sustainability Park. Access will be needed to the chosen site(s)
16	Resurface Rincon Dr., Hopi Dr., River Rat Rd., Rio Ln., and Vista Ln.
17	Resurface the streets in the Centerville area
18	Reconstruct the bridge and Benatz Trail from 3rd North St. to Broadway
19	Reconstruct the bridge at Bitter Creek with traffic signage and lighting