



City of Bullhead City Transportation Study Planning Assistance for Rural Arizona (PARA)

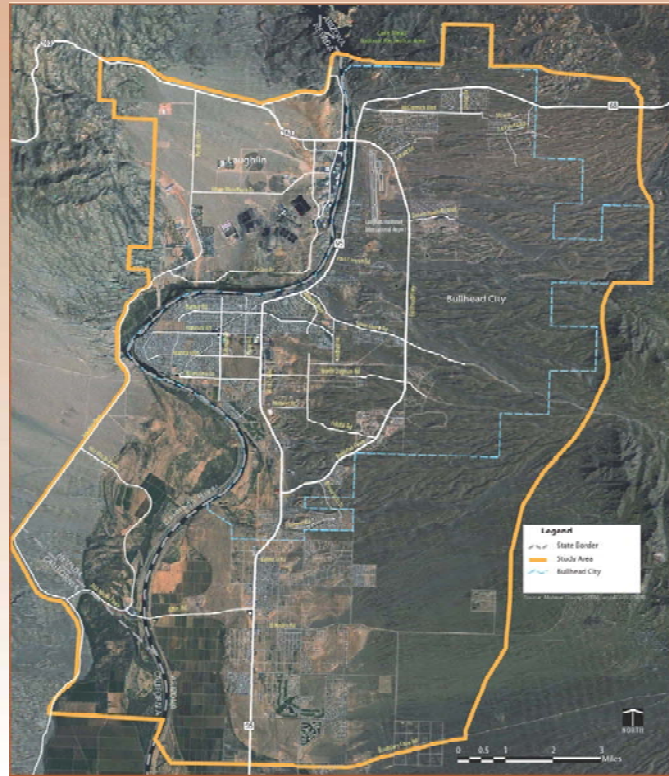
Open House
Wednesday, May 6, 2009

Presentation Overview

- Background
- Schedule
- Goals and Objectives
- Current Conditions
- Next Steps

Study Area

The Study Area extends beyond the City boundary to identify factors affecting the City's transportation network



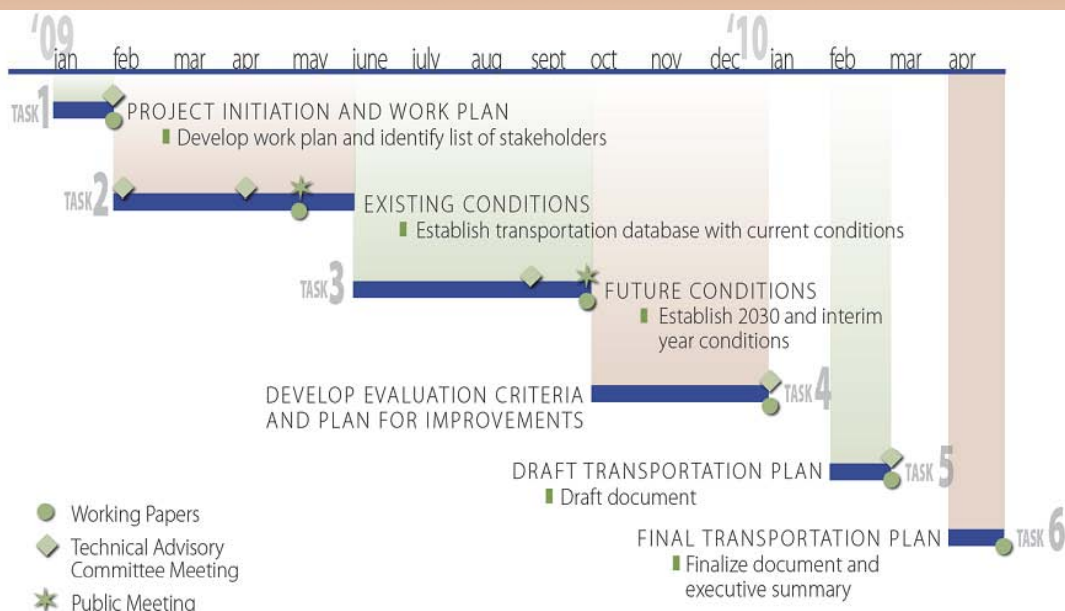
What is a Transportation Study?

- Identifies and addresses intermediate and long range transportation issues for Bullhead City
- Encompasses roadway, transit, and non-motorized modes of travel (such as pedestrian and bicycle)

Study Process

- Planning Assistance for Rural Arizona (PARA) is a program of the Arizona Department of Transportation (ADOT)
 - Provides federal funds to non-metropolitan communities for transportation planning studies
- A technical advisory committee was formed to guide the development of the study

Project Schedule



Goals from the General Plan

- Improve and enhance traffic circulation in and through the City.
 - Objective: Construct and maintain a functional system of arterial, collector and local streets.
 - Objective: Support the expansion of the Laughlin-Bullhead International Airport facilities.
- Improve north/south access through the City.
 - Objective: Investigate additional north/south routes through the City.

Goals from the General Plan

- Provide transportation options for Bullhead City residents and visitors.
 - Objective: Promote long-term public transit service and routes within Bullhead City and between Bullhead City and Laughlin.
 - Objective: Encourage the use of bicycles or walking instead of single occupancy vehicles for short trips.
- Improve access between Highway 95 and the Bullhead Parkway.
 - Objective: Prioritize planned east/west connections between Highway 95 and the Bullhead Parkway.

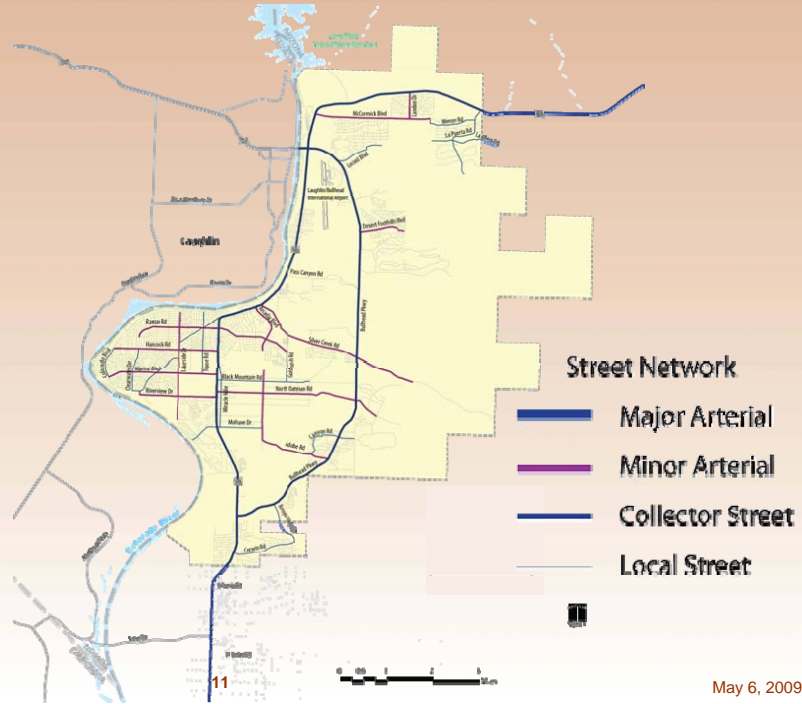
Goals from the General Plan

- Improve access between Bullhead City, Arizona and Laughlin, Nevada
 - Objective: Encourage the design and construction of an additional bridge crossing over the Colorado River...
- Require roadway right-of-way cross sections that are consistent with the General Plan corridor widths.
 - Objective: Evaluate existing General Plan cross sections for consistency with existing right-of way and proposed General Plan corridor widths.
- Facilitate the safe accommodation of diverted truck traffic as a result of the Hoover Dam closure to truck traffic.
 - Objective: Minimize the impacts of the diverted traffic on the normal Bullhead City traffic.

Current Conditions

- Roadway Classification
- Traffic Counts
- Crash Data Map
- Levels of Service at Intersections
- General Plan Land Use Map

Functional Classification



May 6, 2009

Traffic Counts



May 6, 2009

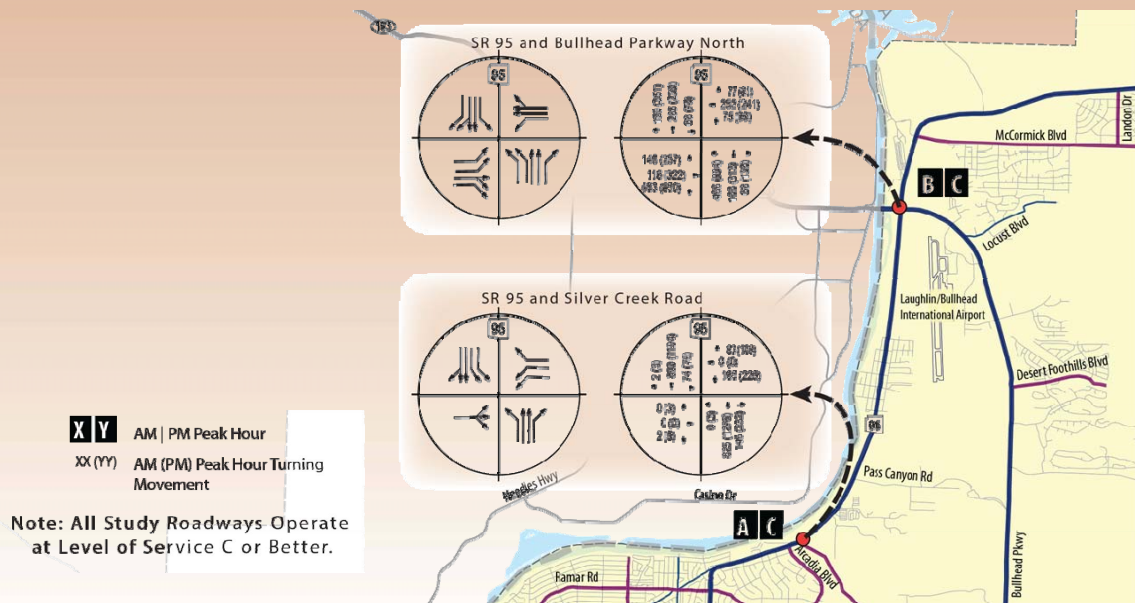
Level of Service

Level of Service	Flow Conditions	Technical Descriptions
• LOS A		Free flow conditions with minimal delays. Full freedom to choose lane and speed. minimum congestion
• LOS B		Stable flow conditions with occasional delays. Slightly restricted freedom to choose lane and speed. minimum congestion
• LOS C		Stable flow conditions with periodic delays. Restricted freedom to choose lane and speed. low congestion
• LOS D		Restricted flow conditions with regular delays. Limited freedom to choose lane and speed. moderate congestion
• LOS E		Constrained flow conditions with extended delays. Very limited freedom to choose lane and speed. high congestion
• LOS F		Forced flow conditions with excessive delays. No freedom to choose lane and speed. very high congestion

LOS D is typically acceptable in urban areas

May 6, 2009

Intersection LOS



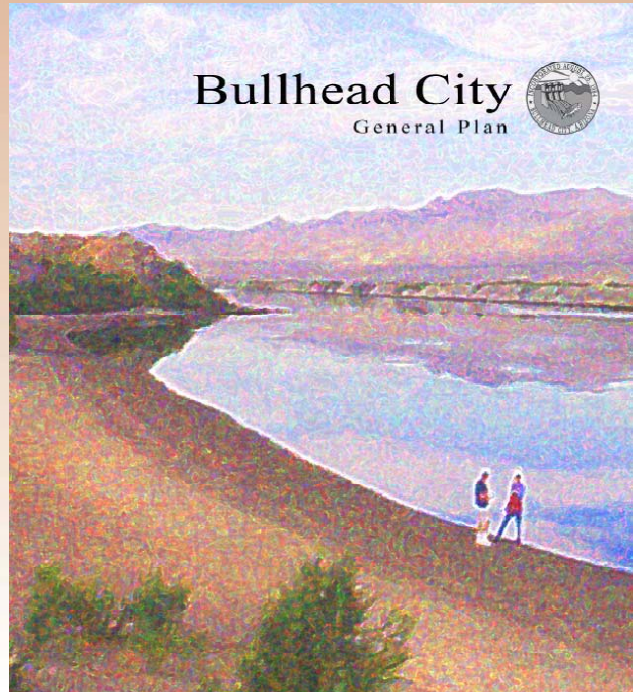
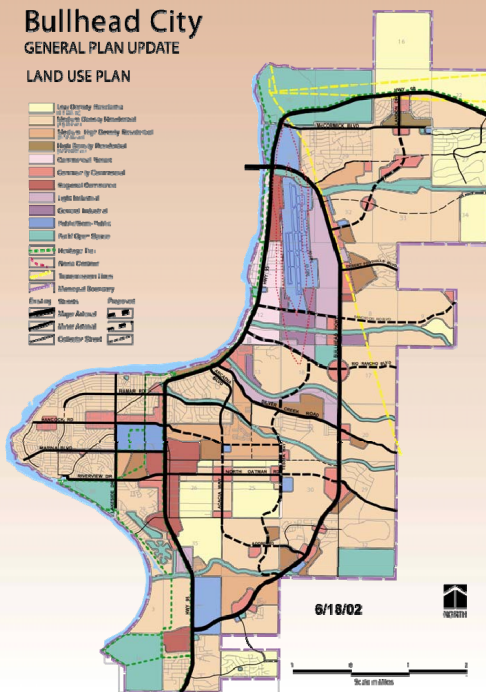
Crash Data

- ADOT crash data was analyzed for a five year period between January 1, 2003 through December 31, 2007
- A total of 4,553 crashes were reported during the 5-year period

Crash Map



General Plan Land Use



Next Steps

- Develop Near-Term (2015) Intermediate (2020) and Long Range (2030) Traffic Forecasts
- Identify Transportation Deficiencies and Needs
- Evaluate Improvement Alternatives
- Public Meeting (Fall of 2009)
- Plan Adoption



Bullhead City Transportation Plan



QUESTIONS?

- Contact Information

Charlene FitzGerald, Project Manager
ADOT Multimodal Planning Division
Phone: 602-712-6196
email: cfitzgerald@azdot.gov

Michele Beggs, Public Involvement Officer
ADOT Kingman District
Phone: 928-681-6054
Email: mbeggs@azdot.gov