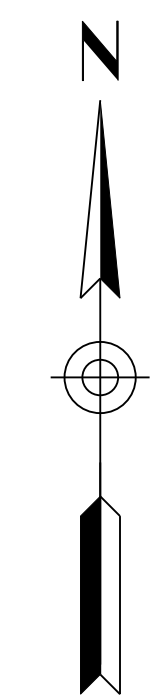
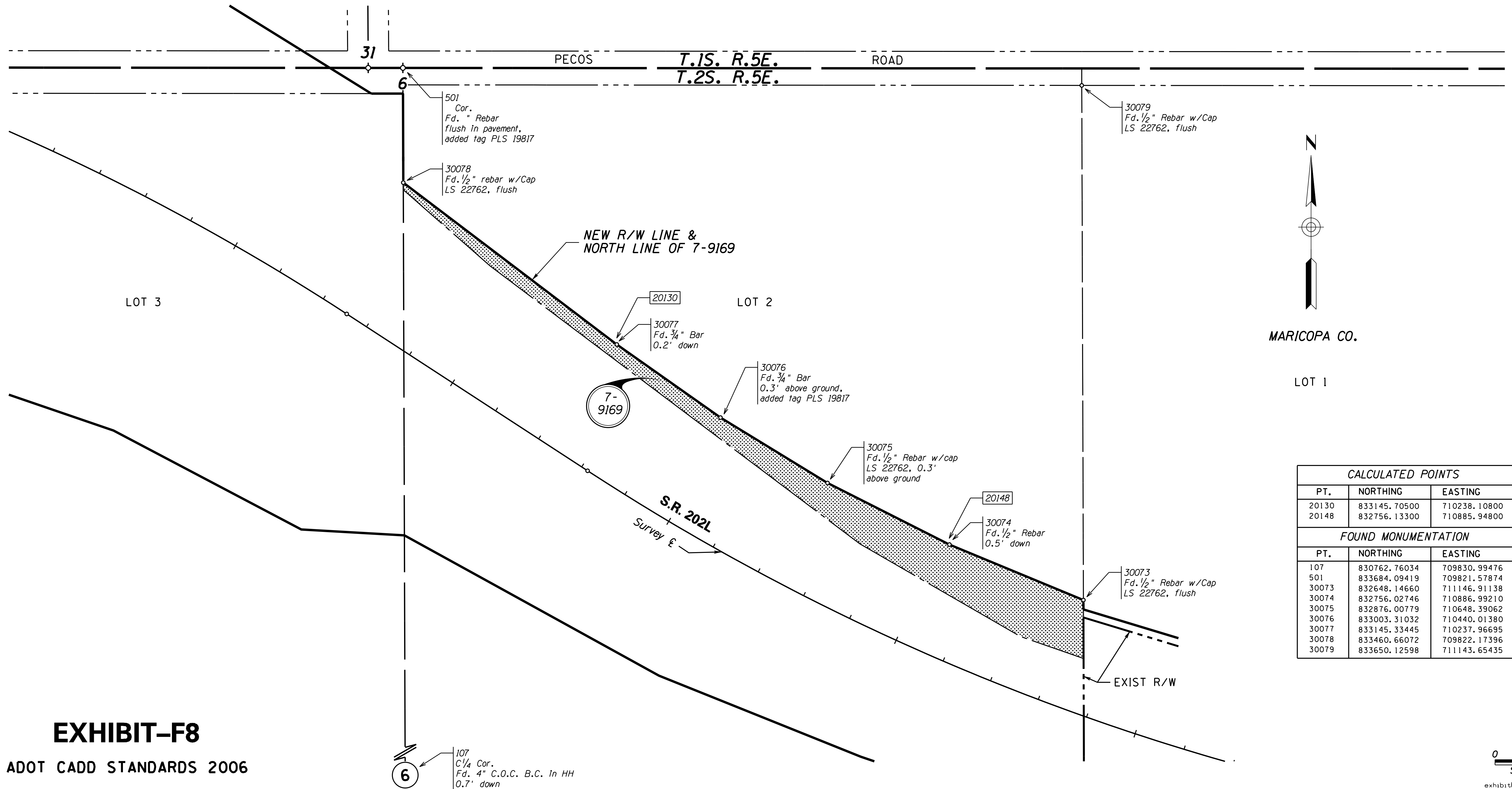


# SUPPLEMENTAL RESULTS OF SURVEY

THIS SURVEY SUPPLEMENTS THE RESULTS OF SURVEY  
SHOWN ON SHEETS RS-1 TO RS-9



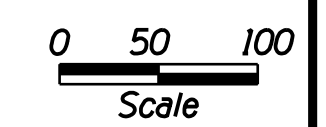
MARICOPA CO.

LOT 1

CALCULATED POINTS		
PT.	NORTHING	EASTING
20130	833145.70500	710238.10800
20148	832756.13300	710885.94800

FOUND MONUMENTATION		
PT.	NORTHING	EASTING
107	830762.76034	709830.99476
501	833684.09419	709821.57874
30073	832648.14660	711146.91138
30074	832756.02746	710886.99210
30075	832876.00779	710648.39062
30076	833003.31032	710440.01380
30077	833145.33445	710237.96695
30078	833460.66072	709822.17396
30079	833650.12598	711143.65435



Scale  
exhibitF8\_rs01.dgn

## EXHIBIT-F8

ADOT CADD STANDARDS 2006

THIS SURVEY WAS PERFORMED TO ESTABLISH THE NORTH LINE OF PARCEL 7-9169 AND TO ADJUST THE NEW R/W LINE SO THAT IT IS COINCIDENT TO SAID NORTH LINE.

### LEGEND

- 301 Set Monument
- 300 Found Monument
- C.O.C. City of Chandler
- 301 Calculated position
- Parcel Limits

CHANGE ORDER REVISIONS				DRAWING NO.	D-7-T-909	ARIZONA DEPARTMENT OF TRANSPORTATION INTERMODAL TRANSPORTATION DIVISION RIGHT OF WAY PLANS SECTION	
C.O. NO.	DATE	BY	DESCRIPTION OF REVISIONS	SURVEY	AUG. 2001	HIGHWAY NAME: SANTAN FREEWAY	
				DRAWN/DATE	J. Crume/Sep 01	FEDERAL AID NO.:	
				ADOT REVIEW	B. Gurney	RAM 600-7-802	
				HUBBARD ENGINEERING 480-892-3313 Gilbert, AZ jcrume@heaz.us Job # 20047		PROJECT NO.:	
				ROUTE NO.:	SR 202L	202L MA 003 H5380 01R	
				LOCATION:	Price Road - Arizona Avenue		

PRELIMINARY  
NOT FOR  
CONSTRUCTION  
OR RECORDING  
--Created--  
9/9/2009  
9:26:44 AM