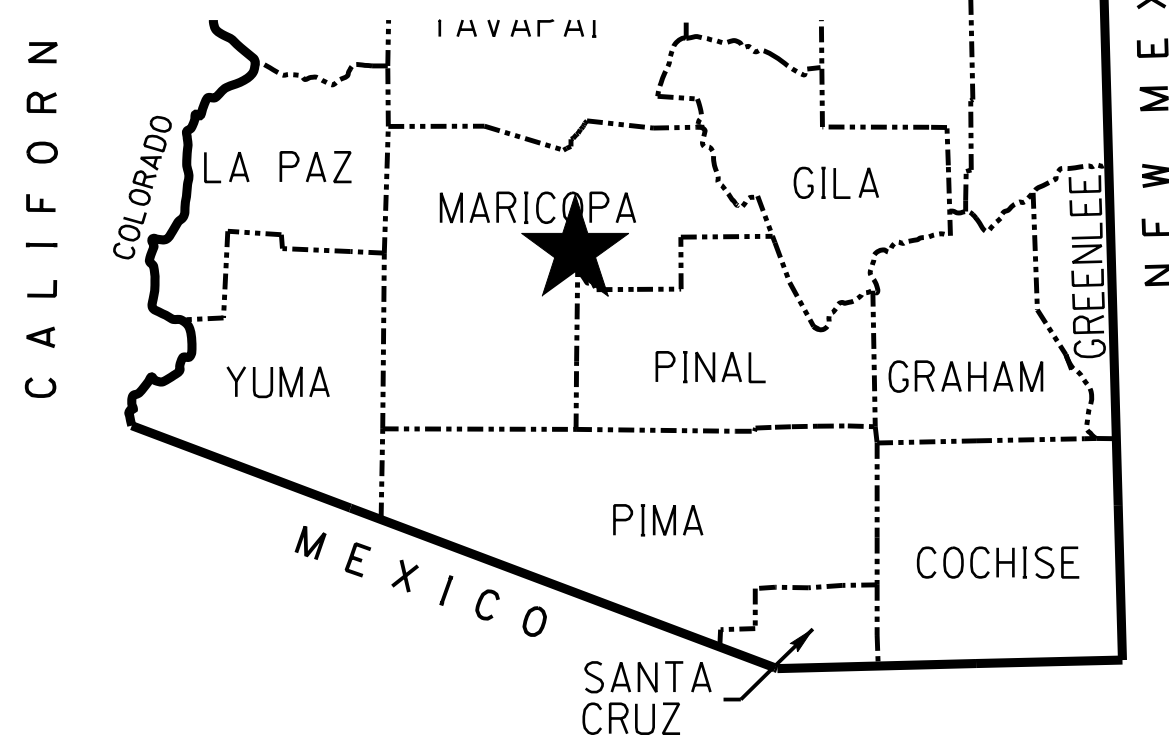


PLAN SHEET NOTES
 SEED FILE: Seed_cvr.dgn
 FILE NAME: --rw---_cvr.dgn
 REFERENCE FILES:
 None
 AA=0 AS=1
 See plotting instructions
 in CADD Standards manual
 for additional details.



★ PROJECT LOCATION
 COUNTY NAME: MARICOPA
 LENGTH OF PROJECT: 3.7 MILES
 ADOT DISTRICT: PHOENIX (E)
 DRAWING NUMBER: D-7-T-909

STAR
 RW_V8.cel
 AC=RWSTAR
 LV=262
 CO=154
 LC=0
 WT=2

DATA FIELD
 LV=262 FT=1
 CO=62 TX=18
 LC=0 ACTIVE
 WT=3 TXJ=LT

SHEET INDEX

COVER SHEET	1
STANDARD ABBREVIATIONS & SYMBOLS	S-1
OWNERSHIP RECORD SHEET	ORS-1 TO ORS-2
VICINITY MAP SHEET	VM-1 TO VM-2
PLAN SHEET	P-1 TO P-20
PARCEL INSERT SHEET	PAR-1
BIA SHEET	BIA-1
ADVANCE ACQUISITION	AA-1
RESULTS OF SURVEY	RS-1 TO RS-3
SUPPLEMENTAL RESULTS OF SURVEY	SS-1 TO SS-3
RIGHT OF WAY MONUMENTATION SURVEY	MS-1 TO MS-3
TOTAL SHEETS	38

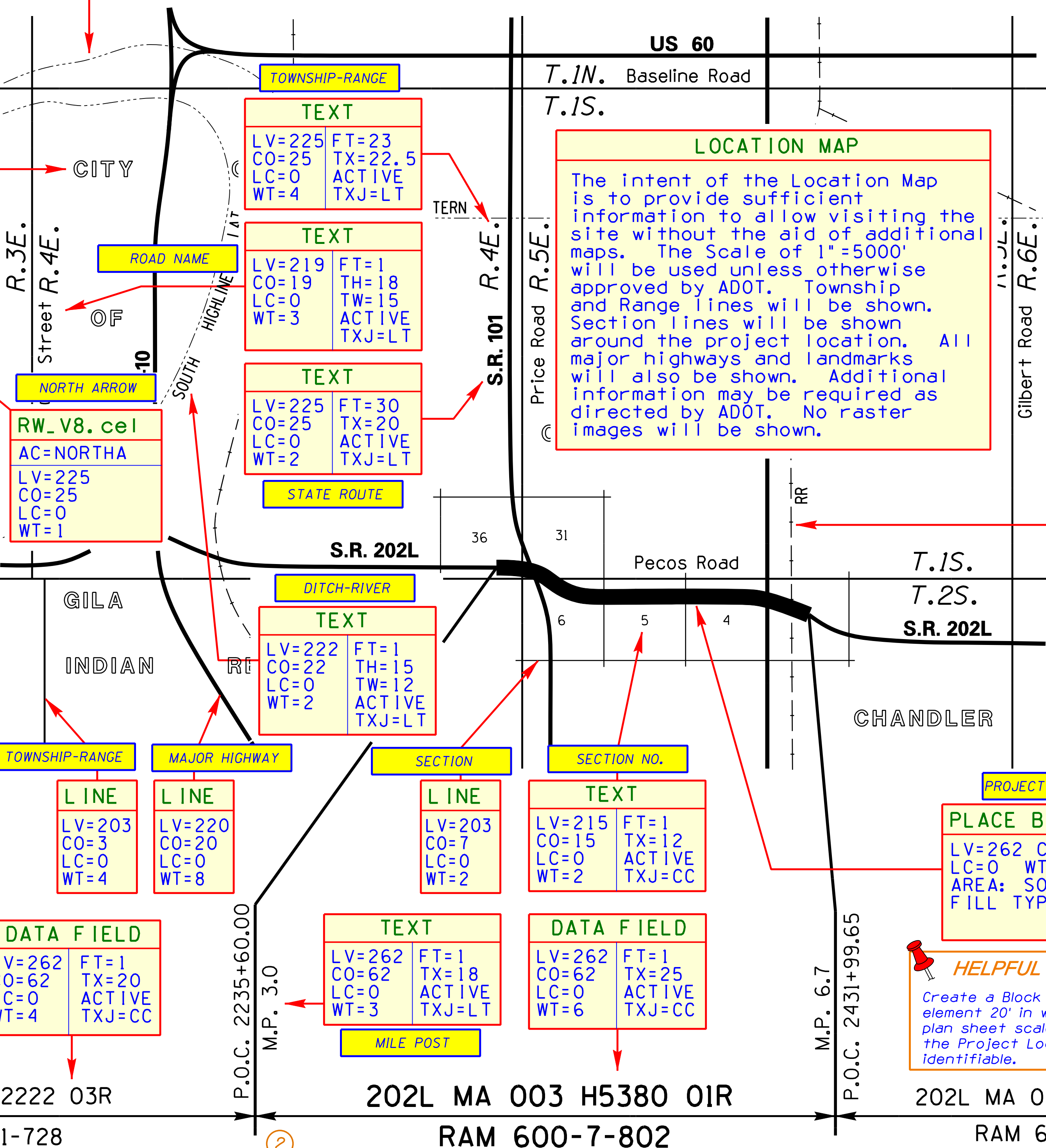
EXHIBIT-A1
 ADOT CADD STANDARDS 2006

② RW_V8.cel
 LT=ARROW
 TS=2
 LV=201
 CO=1
 LC=0
 WT=1

HELPFUL HINTS
 Copy Star from Project Location box and place on Map at location of Project.
 If project is located in Greenlee Co. then move text and add leader.

CITY-RESERVATION
TEXT
 LV=271 FT=42
 CO=71 TX=20
 LC=0 ACTIVE
 WT=2 TXJ=LT

RIGHT OF WAY PLANS OF THE SANTAN FREEWAY PRICE ROAD - ARIZONA AVENUE 2L MA 003 H5380 01R RAM 600-7-802



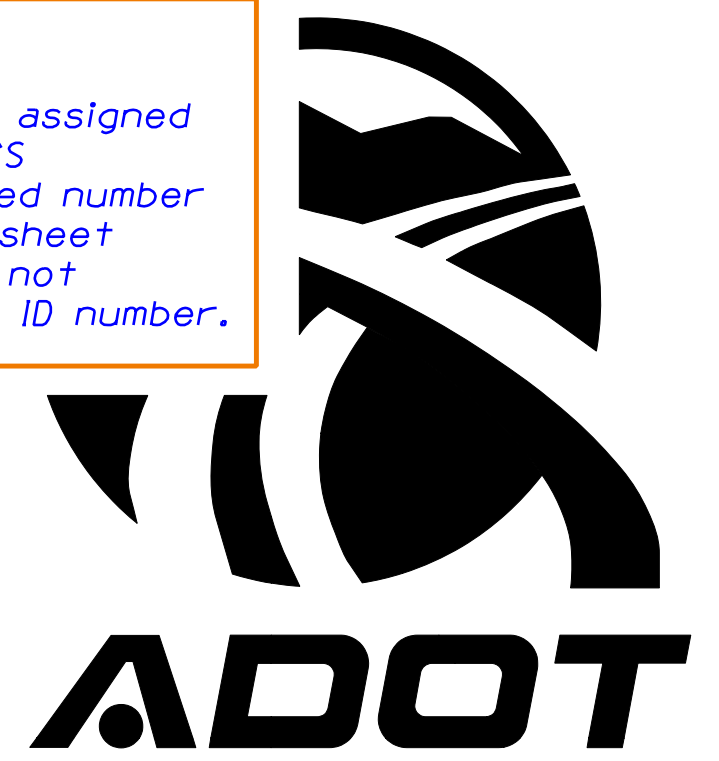
DATA FIELD
 LV=262 FT=1
 CO=62 TX=47
 LC=0 ACTIVE
 WT=6 TXJ=CB

HELPFUL HINTS
 If the project does not have an assigned federal ID number, then the TRACS number is the only project related number that will be shown on the cover sheet and the word 'unassigned' should not be shown in place of the federal ID number.

HELPFUL HINTS
 For Rural projects that do not lie within a Town or City and the nearest Town or City does not appear on the Cover Sheet Map, A distance to the nearest mile will be shown in both directions to the nearest Town or City.

HELPFUL HINTS
 Raster images can be referenced and sized to the proper scale for purposes of locating lines, highways and landmarks. They will be detached prior to final submittal.

RW_V8.cel
 AC=LOGO
 LV=254
 CO=245/246
 LC=0
 WT=2



RAILROAD
ADOT_e.rsc
 LV=211
 CO=11
 LC=ARR100_e
 WT=2
 SCALE FACTOR=1

① Text for plotting of file name using a Pen Table with Text Substitution. See plotting instructions in the CADD Standards manual.

DATA FIELD
 LV=262 FT=1
 CO=62 TH=16
 LC=0 TW=14
 WT=3

APPROVED IN ACCORDANCE WITH
 ARIZONA DEPARTMENT OF TRANSPORTATION BOARD
 RESOLUTION 2001-03-A-017 DATED 3-16-01
 RESOLUTION 2001-09-A-068 DATED 9-14-01

HELPFUL HINTS
 Edit text to add additional resolutions as needed.

①
 exhibitA1_cvr.dgn
 PRELIMINARY
 NOT FOR
 CONSTRUCTION
 OR RECORDING
 --Created--
 9/9/2009
 7:57:48 AM