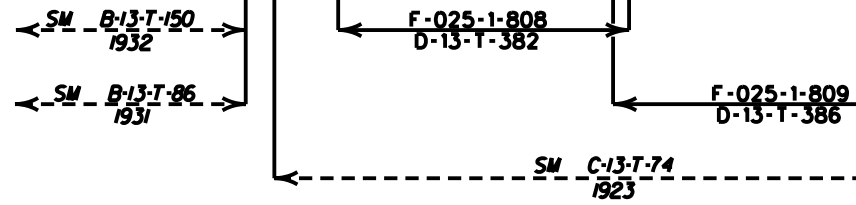
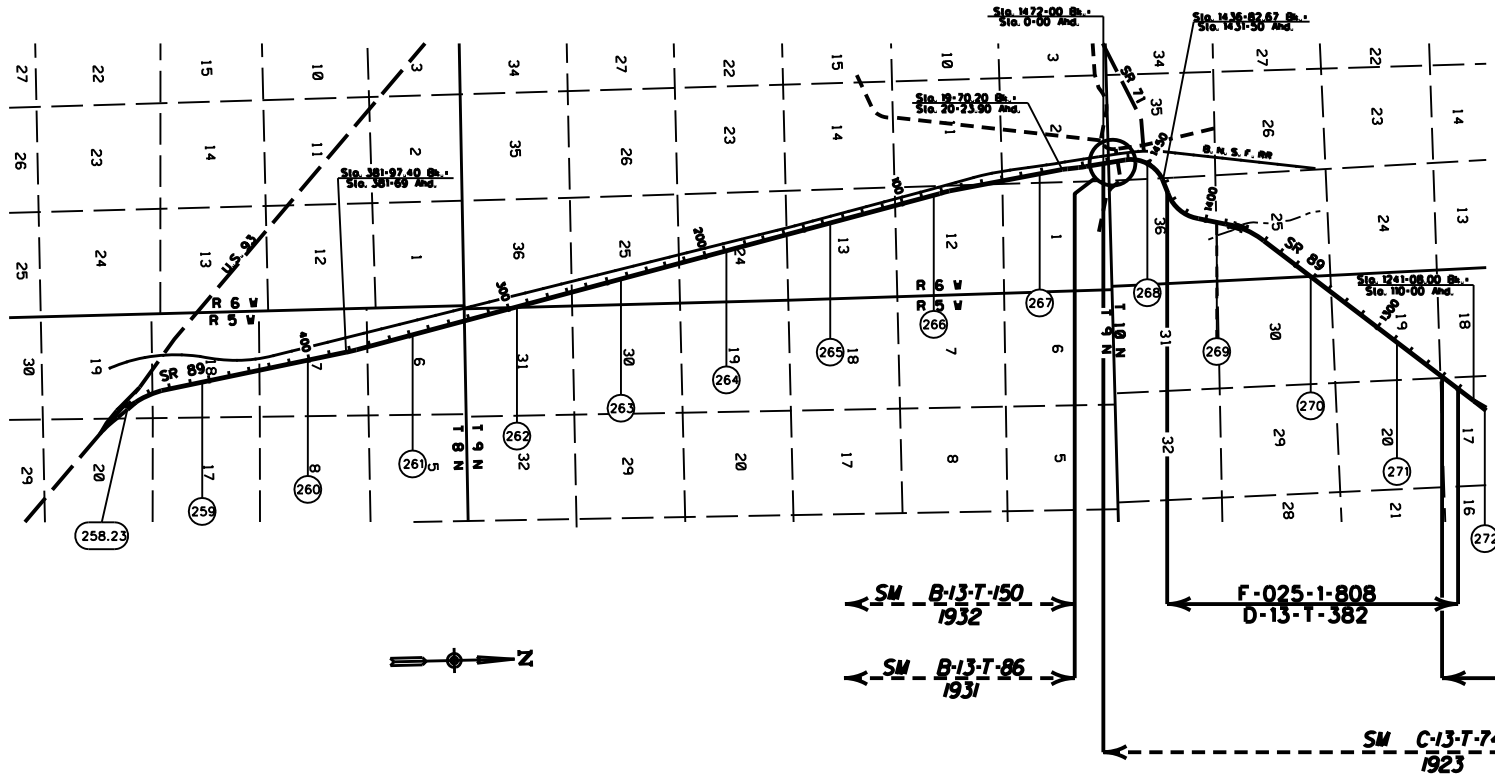


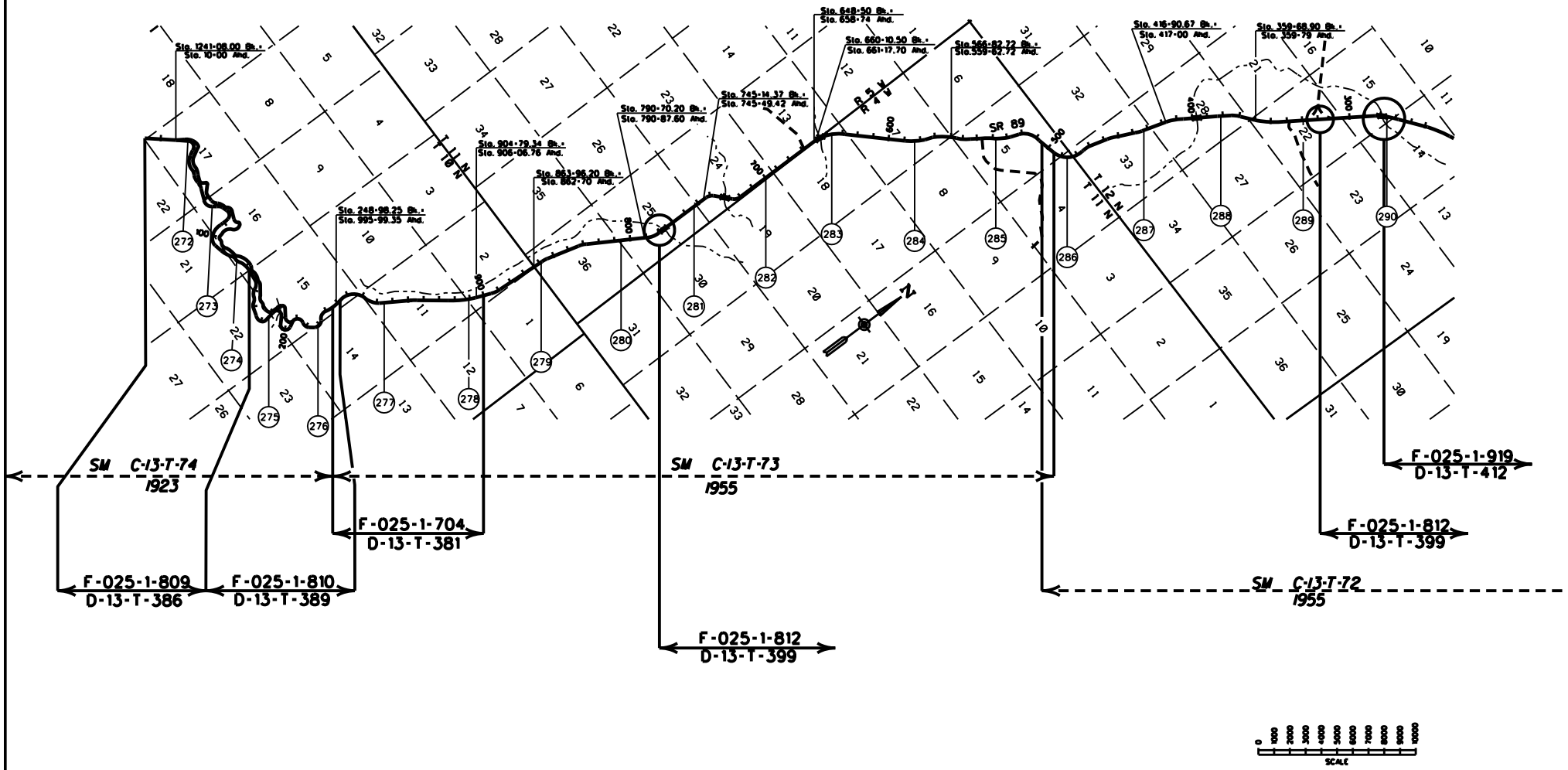
YAVAPAI COUNTY



<p>LEGEND</p> <p>HIGHWAY</p> <p>MILEPOST</p> <p>STATIONING TICKS</p> <p>STRIP MAP</p> <p>SHEET MAP</p>		<p>ARIZONA DEPARTMENT OF TRANSPORTATION INTERMODAL TRANSPORTATION DIVISION RIGHT OF WAY SECTION</p>		1
		<p>MILEPOST MAP</p>		
		<p>ROUTE SR 89</p>	<p>MILEPOST 258.23 - 272.00</p>	
		<p>WICKENBURG - PRESCOTT HWY</p>		

COPIES OF RIGHT OF WAY MAP SHEETS AND STRIP MAPS ARE AVAILABLE TO THE PUBLIC FROM: RIGHT OF WAY PLANS SECTION, MAIL DROP 612E, 205 SOUTH 17TH AVENUE, PHOENIX AZ 85007, TELEPHONE (602)712-7270.

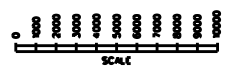
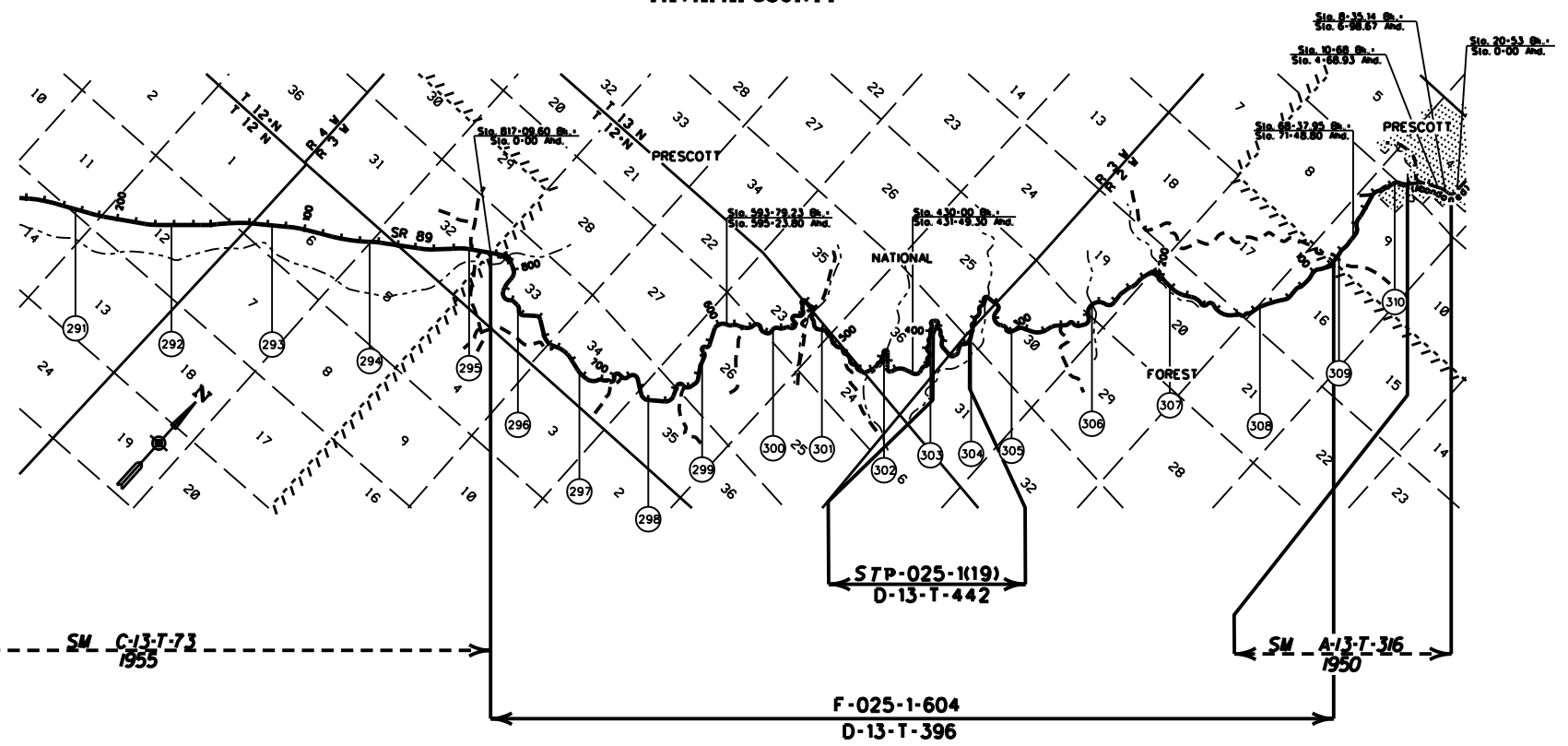
YAVAPAI COUNTY



COPIES OF RIGHT OF WAY MAP SHEETS AND STRIP MAPS ARE AVAILABLE TO THE PUBLIC FROM: RIGHT OF WAY PLANS SECTION, MAIL DROP 612E, 205 SOUTH 17TH AVENUE, PHOENIX AZ 85007, TELEPHONE (602) 712-7270.

<p>LEGEND</p> <p>HIGHWAY</p> <p>MILEPOST</p> <p>STATIONING TICKS</p> <p>STRIP MAP</p> <p>SHEET MAP</p>	<p>ARIZONA DEPARTMENT OF TRANSPORTATION INTERMODAL TRANSPORTATION DIVISION RIGHT OF WAY SECTION</p>		<p>2</p>
	<p>MILEPOST MAP</p>		
	<p>ROUTE SR 89</p>	<p>MILEPOST 272.00 - 290.0</p>	
<p>WICKENBURG - PRESCOTT HWY</p>			

YAVAPAI COUNTY

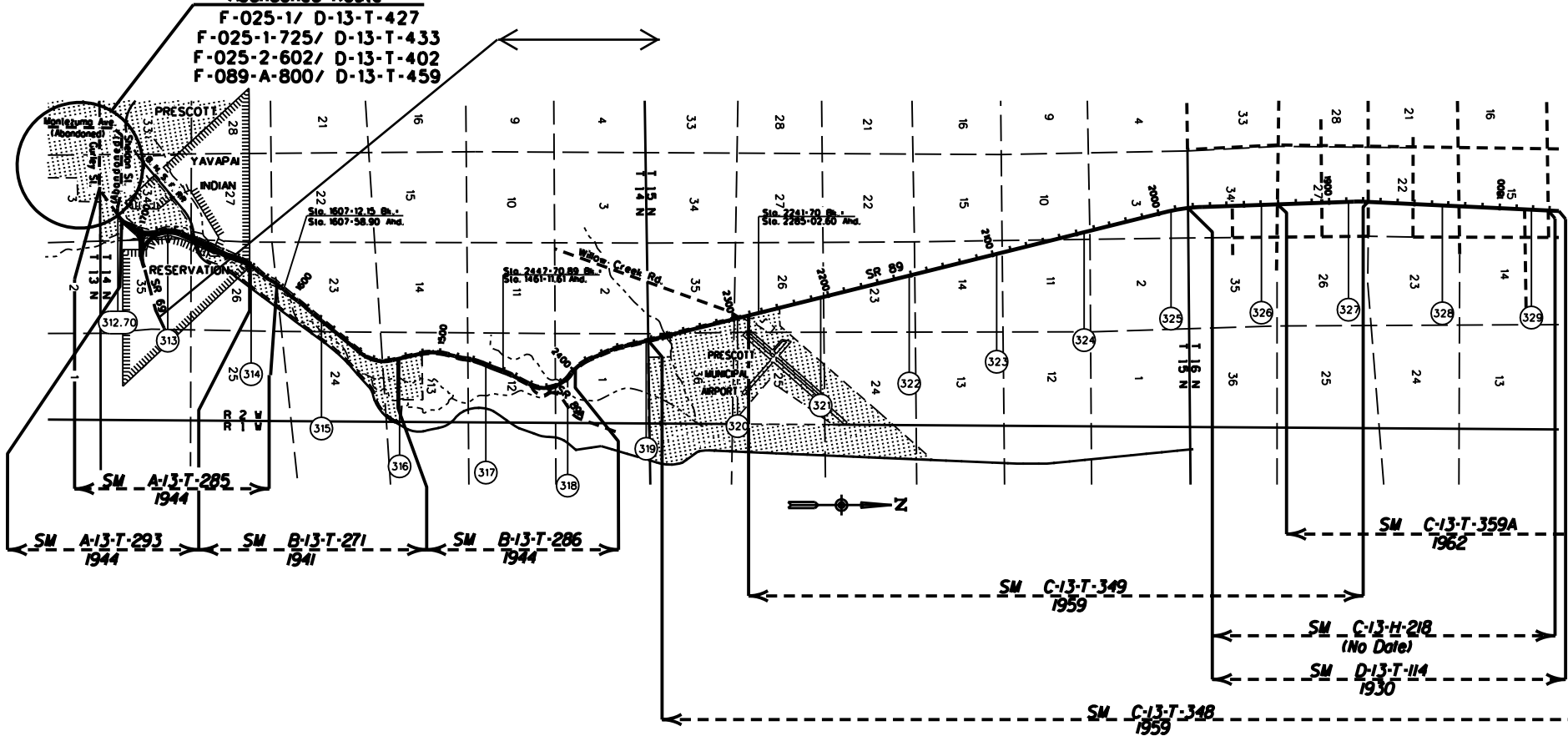


COPIES OF RIGHT OF WAY MAP SHEETS AND STRIP MAPS ARE AVAILABLE TO THE PUBLIC FROM: RIGHT OF WAY PLANS SECTION, MAIL DROP 612E, 205 SOUTH 17TH AVENUE, PHOENIX AZ 85007, TELEPHONE (602) 712-7270.

<p>LEGEND</p> <p>HIGHWAY</p> <p>MILEPOST</p> <p>STATIONING TICKS</p> <p>STRIP MAP</p> <p>SHEET MAP</p>		<p>ARIZONA DEPARTMENT OF TRANSPORTATION INTERMODAL TRANSPORTATION DIVISION RIGHT OF WAY SECTION</p>	<p style="font-size: 2em;">3</p>
	<p>MILEPOST MAP</p>		
	<p>ROUTE SR 89</p> <p>MILEPOST 291.00 - 310.00</p> <p>HIGHWAY NAME</p>	<p>WICKENBURG - PRESCOTT HWY</p>	

YAVAPAI COUNTY

Abandoned Route:
 F-025-1/ D-13-T-427
 F-025-1-725/ D-13-T-433
 F-025-2-602/ D-13-T-402
 F-089-A-800/ D-13-T-459



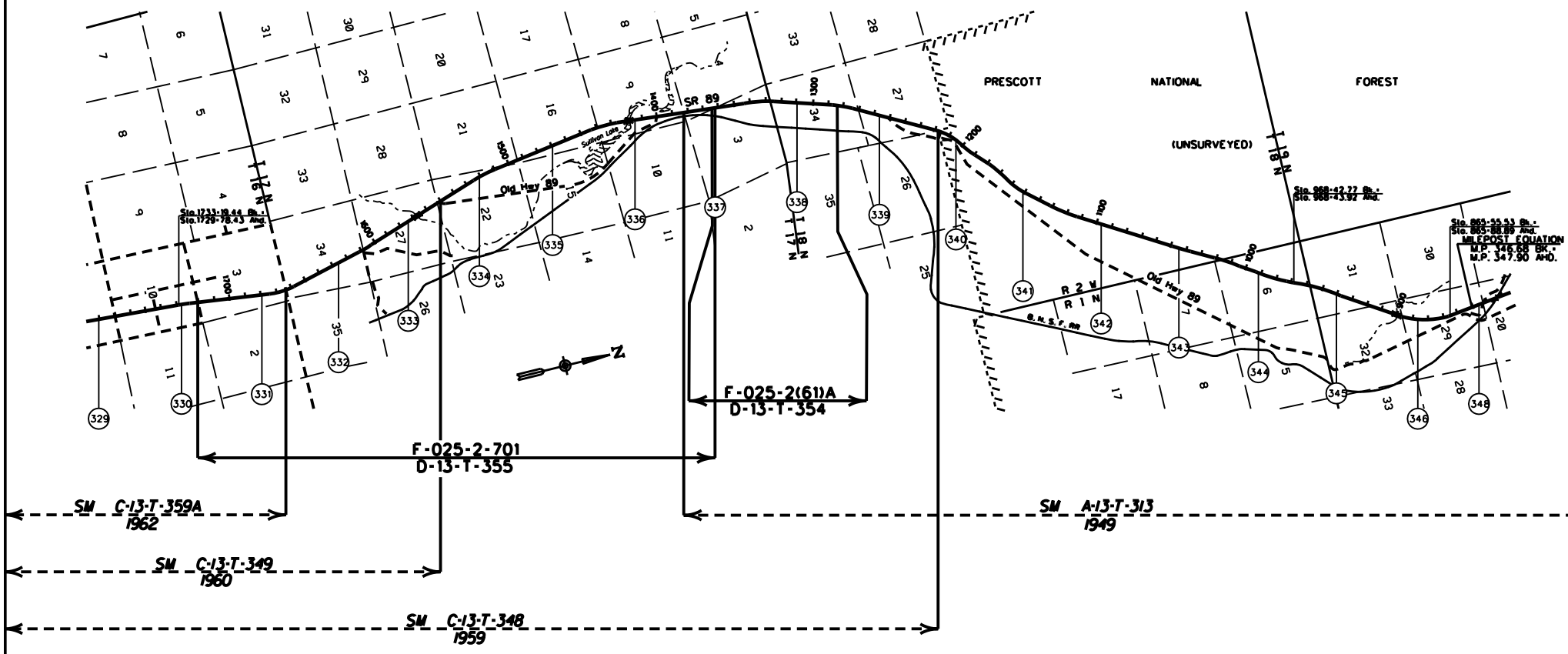
<p>LEGEND</p> <p>HIGHWAY</p> <p>MILEPOST</p> <p>STATIONING TICKS</p> <p>STRIP MAP</p> <p>SHEET MAP</p>		ARIZONA DEPARTMENT OF TRANSPORTATION INTERMODAL TRANSPORTATION DIVISION RIGHT OF WAY SECTION		
		MILEPOST MAP		
		ROUTE SR 89	MILEPOST 312.70 - 339.00	
		PRESCOTT - ASH FORK HWY		

COPIES OF RIGHT OF WAY MAP SHEETS AND STRIP MAPS ARE AVAILABLE TO THE PUBLIC FROM: RIGHT OF WAY PLANS SECTION, MAIL DROP 612E, 205 SOUTH 17TH AVENUE, PHOENIX AZ 85007, TELEPHONE (602) 712-7270.

YAVAPAI COUNTY

PRESCOTT NATIONAL FOREST

(UNSURVEYED)



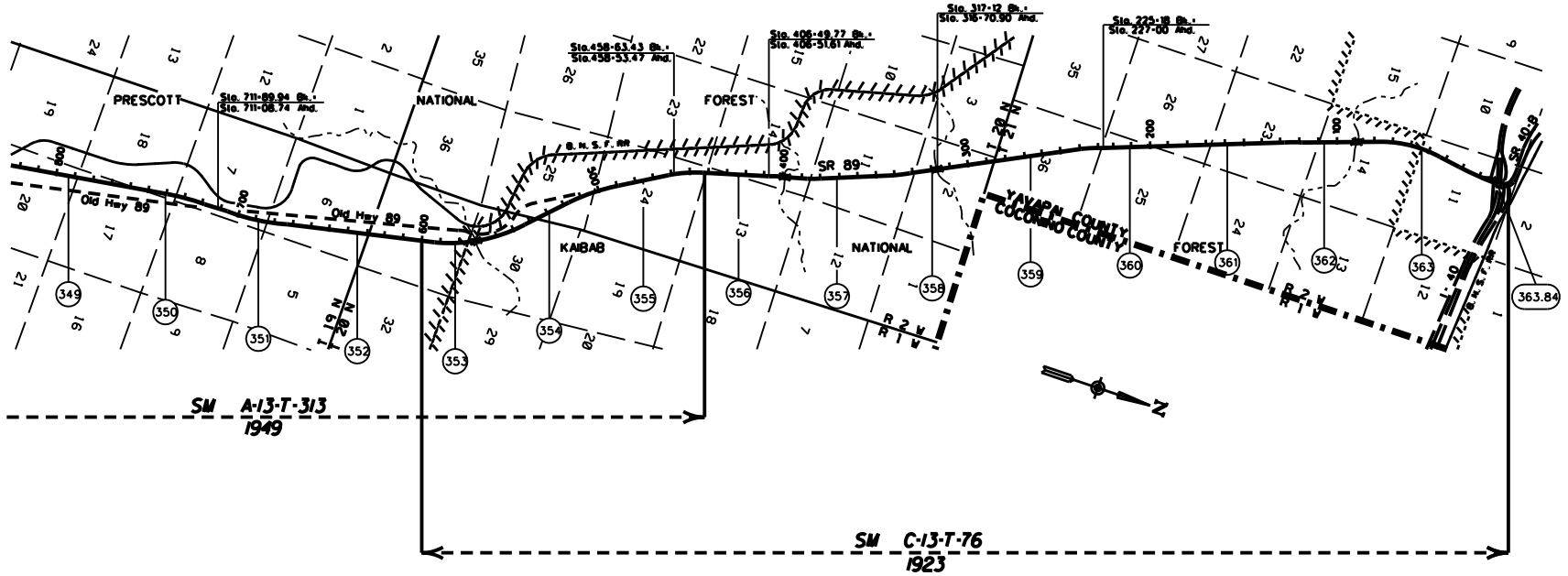
Sta. 083+55.53 Br. -
Sta. 083+88.88 Br. -
MILEPOST EQUATION
M.P. 347.90 64'-
M.P. 347.90 40'-



COPIES OF RIGHT OF WAY MAP SHEETS AND STRIP MAPS ARE AVAILABLE TO THE PUBLIC FROM: RIGHT OF WAY PLANS SECTION, MAIL DROP 612E, 205 SOUTH 17TH AVENUE, PHOENIX AZ 85007, TELEPHONE 16021712-7270.

<p>LEGEND</p> <p>HIGHWAY</p> <p>MILEPOST</p> <p>STATIONING TICKS</p> <p>STRIP MAP</p> <p>SHEET MAP</p>		<p>ARIZONA DEPARTMENT OF TRANSPORTATION</p> <p>INTERMODAL TRANSPORTATION DIVISION</p> <p>RIGHT OF WAY SECTION</p>	<p>5</p>
		<p>MILEPOST MAP</p>	
<p>ROUTE SR 89 MILEPOST 329.00 - 348.00</p>		<p>HIGHWAY NAME PRESCOTT - ASH FORK HWY</p>	

YAVAPAI COUNTY



COPIES OF RIGHT OF WAY MAP SHEETS AND STRIP MAPS ARE AVAILABLE TO THE PUBLIC FROM: RIGHT OF WAY PLANS SECTION, MAIL DROP 612E, 205 SOUTH 17TH AVENUE, PHOENIX AZ 85007, TELEPHONE (602)712-7270.

<p>LEGEND</p> <p>HIGHWAY ———</p> <p>MILEPOST (O)</p> <p>STATIONING TICKS — —</p> <p>STRIP MAP ———</p> <p>SHEET MAP ———</p>		<p>ARIZONA DEPARTMENT OF TRANSPORTATION INTERMODAL TRANSPORTATION DIVISION RIGHT OF WAY SECTION</p>		6
		<p>MILEPOST MAP</p>		
<p>ROUTE SR 89</p>		<p>MILEPOST 349.00 - 363.84</p>		
<p>HIGHWAY NAME</p>		<p>PRESCOTT - ASH FORK HWY</p>		