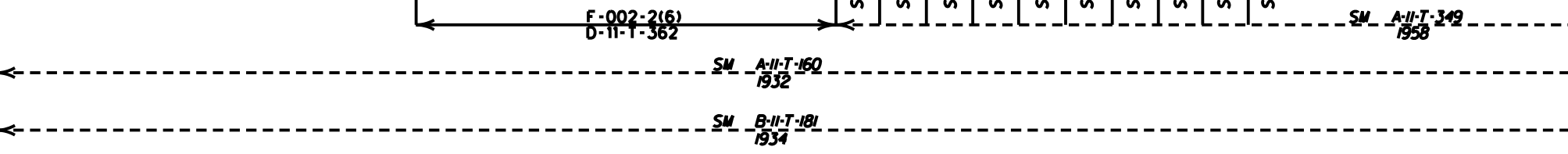
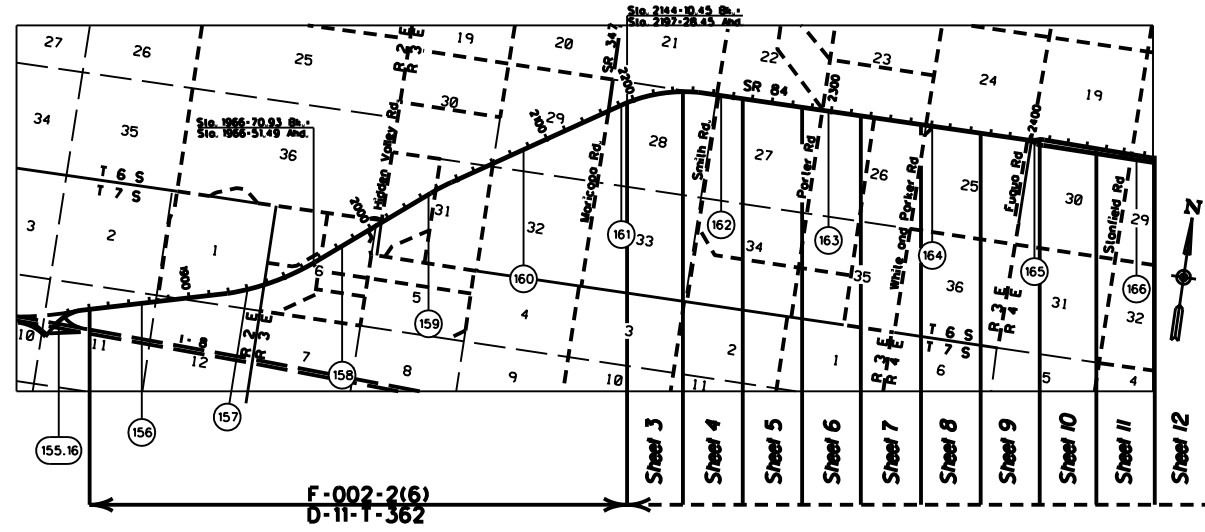


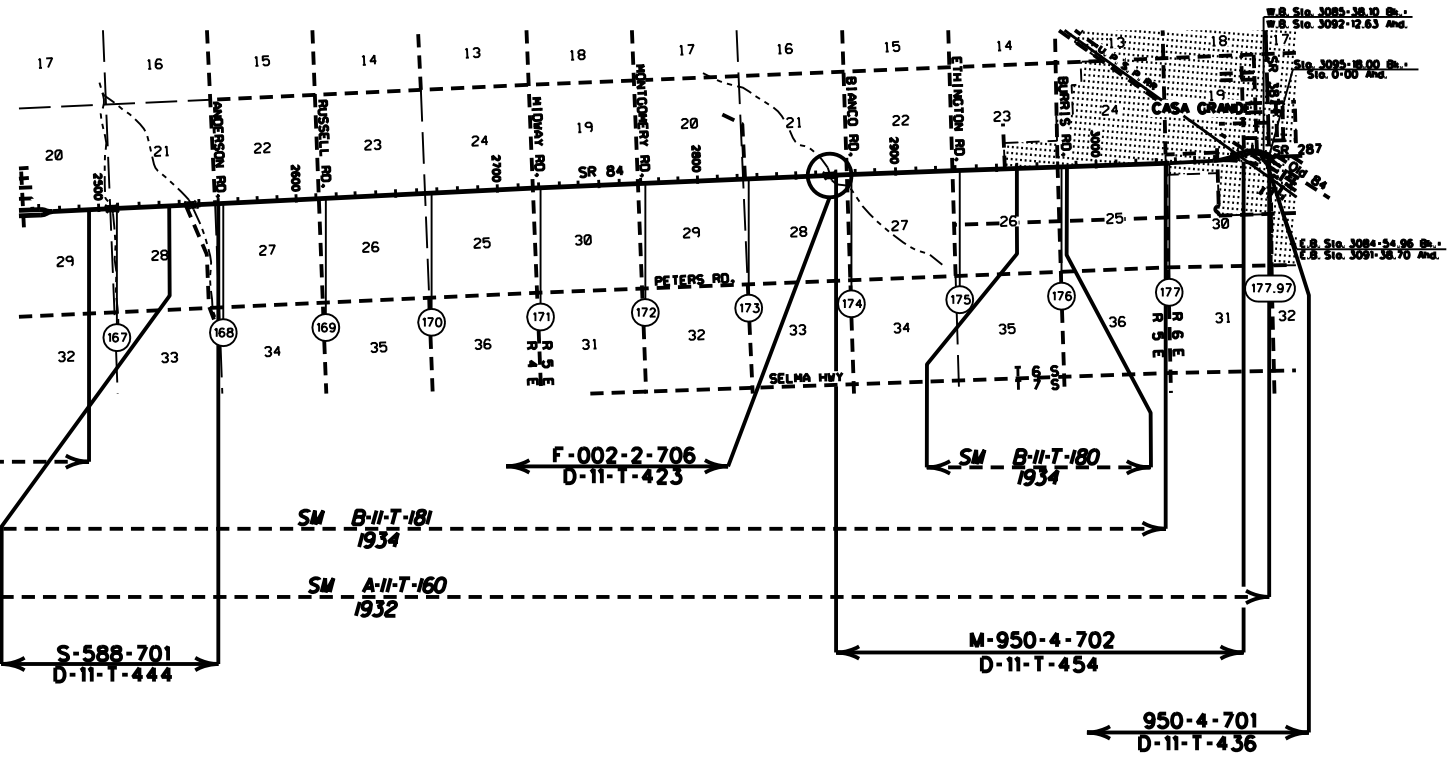
PINAL COUNTY



<p>LEGEND</p> <p>HIGHWAY</p> <p>MILEPOST</p> <p>STATIONING TICKS</p> <p>STRIP MAP</p> <p>SHEET MAP</p>		<p>ARIZONA DEPARTMENT OF TRANSPORTATION INTERMODAL TRANSPORTATION DIVISION RIGHT OF WAY SECTION</p> <p>MILEPOST MAP</p> <p>ROUTE SR 84 MILEPOST 155.16 - 166.00</p> <p>HIGHWAY NAME GILA BEND - CASA GRANDE HWY</p>	<p>1</p>	
	<p>ARIZONA DEPARTMENT OF TRANSPORTATION INTERMODAL TRANSPORTATION DIVISION RIGHT OF WAY SECTION</p>			
	<p>ROUTE SR 84 MILEPOST 155.16 - 166.00</p> <p>HIGHWAY NAME GILA BEND - CASA GRANDE HWY</p>			

COPIES OF RIGHT OF WAY MAP SHEETS AND STRIP MAPS ARE AVAILABLE TO THE PUBLIC FROM: RIGHT OF WAY PLANS SECTION, MAIL DROP 612E, 205 SOUTH 17TH AVENUE, PHOENIX AZ 85007, TELEPHONE (602)712-7270.

PINAL COUNTY



U.S. Sta. 3083-38.10 Br. -
 U.S. Sta. 3092-12.63 Ahd.
 U.S. Sta. 3095-18.00 Br. -
 U.S. Sta. 0-00 Ahd.
 U.S. Sta. 3084-34.95 Br. -
 U.S. Sta. 3087-38.70 Ahd.

SM A-II-T-349 (Sheet 12)
1958

F-002-2-706
D-11-T-423

SM B-II-T-180
1934

SM B-II-T-181
1934

SM A-II-T-160
1932

S-588-701
D-11-T-444

M-950-4-702
D-11-T-454

950-4-701
D-11-T-436



LEGEND

HIGHWAY	
MILEPOST	
STATIONING TICKS	
STRIP MAP	
SHEET MAP	

ARIZONA DEPARTMENT OF TRANSPORTATION INTERMODAL TRANSPORTATION DIVISION RIGHT OF WAY SECTION	
MILEPOST MAP	
ROUTE SR 84	MILEPOST 167.00 - 177.97
GILA BEND - CASA GRANDE HWY	

COPIES OF RIGHT OF WAY MAP SHEETS AND STRIP MAPS ARE AVAILABLE TO THE PUBLIC FROM: RIGHT OF WAY PLANS SECTION, MAIL DROP 612E, 205 SOUTH 17TH AVENUE, PHOENIX AZ 85007, TELEPHONE (602)712-7270.