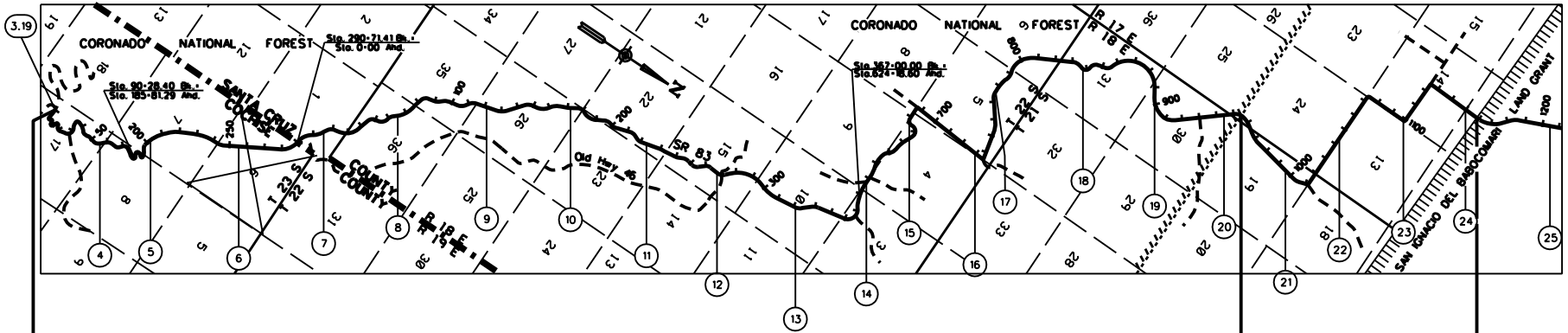


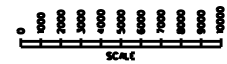
**SANTA CRUZ COUNTY**



**M-900-711**  
**D-2-T-467**

**S-249-814**  
**D-12-T-347**

**S-249-601**  
**D-12-T-321**



**LEGEND**

- HIGHWAY 
- MILEPOST 
- STATIONING TICKS 
- STRIP MAP 
- SHEET MAP 

ARIZONA DEPARTMENT OF TRANSPORTATION  
INTERMODAL TRANSPORTATION DIVISION  
RIGHT OF WAY SECTION

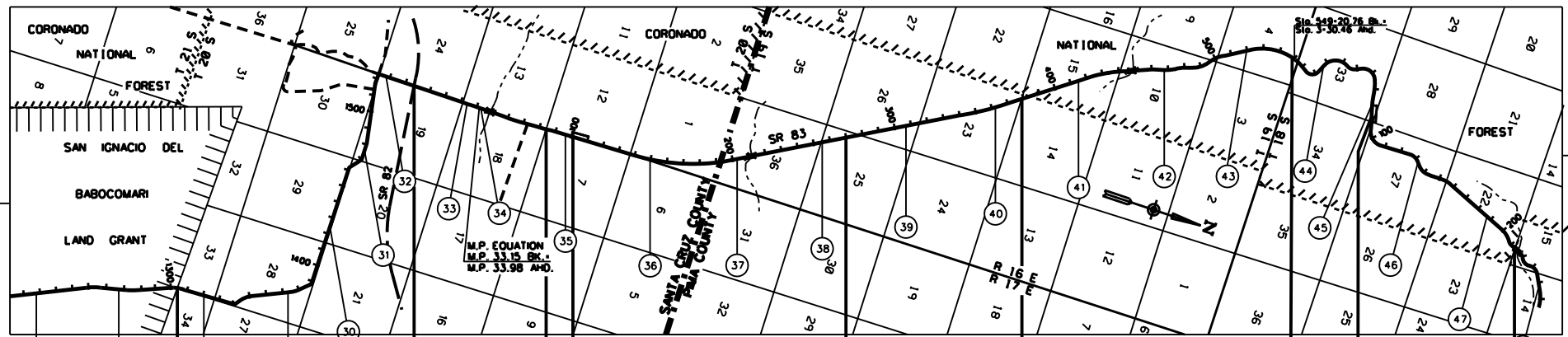
**MILEPOST MAP**

ROUTE **SR 83** MILEPOST **3.19 - 25.00**

HIGHWAY NAME  
**PARKER CANYON LAKE - MOUNTAIN VIEW HWY**

SANTA CRUZ COUNTY

PIMA COUNTY



**LEGEND**

- HIGHWAY
- MILEPOST
- STATIONING TICKS
- STRIP MAP
- SHEET MAP

ARIZONA DEPARTMENT OF TRANSPORTATION  
INTERMODAL TRANSPORTATION DIVISION  
RIGHT OF WAY SECTION

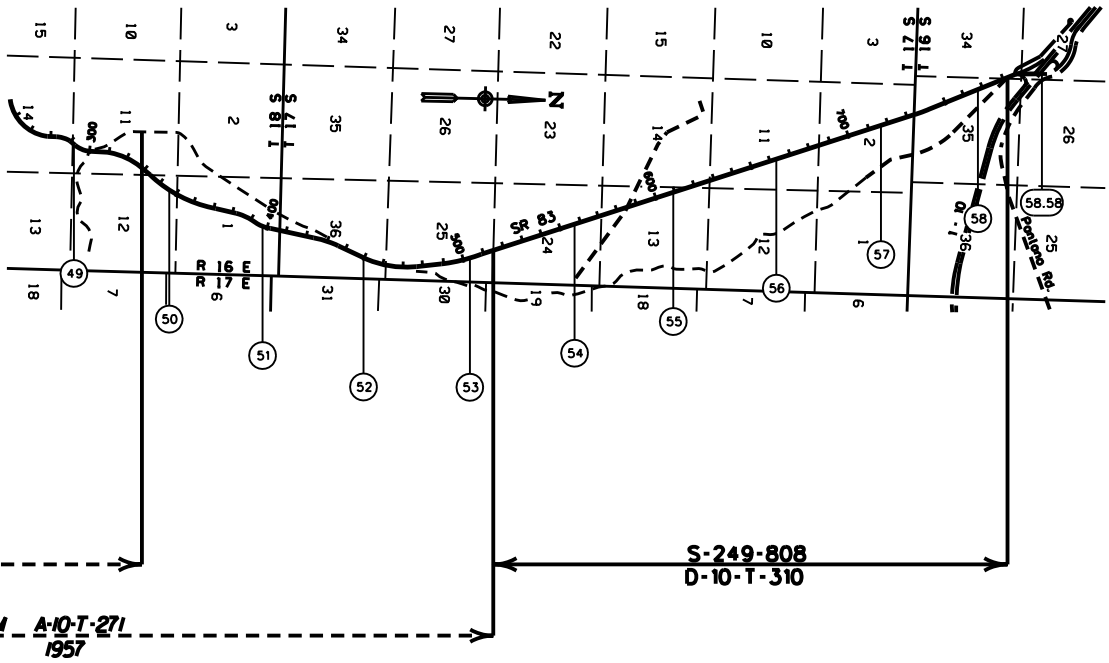
**MILEPOST MAP**

ROUTE SR 83 MILEPOST 26.00 - 48.00

HIGHWAY NAME  
**PARKER CANYON LAKE - MOUNTAIN VIEW HWY**

COPIES OF RIGHT OF WAY MAP SHEETS AND STRIP MAPS ARE AVAILABLE TO THE PUBLIC FROM: RIGHT OF WAY PLANS SECTION, MAIL DROP 612E, 205 SOUTH 17TH AVENUE, PHOENIX AZ 85007, TELEPHONE (602) 712-7270.

PIMA COUNTY



LEGEND

HIGHWAY	
MILEPOST	
STATIONING TICKS	
STRIP MAP	
SHEET MAP	

ARIZONA DEPARTMENT OF TRANSPORTATION INTERMODAL TRANSPORTATION DIVISION RIGHT OF WAY SECTION		<b>3</b>
<b>MILEPOST MAP</b>		
ROUTE SR 83	MILEPOST 49.00 - 58.58	
<b>PARKER CANYON LAKE - MOUNTAIN VIEW HWY</b>		

COPIES OF RIGHT OF WAY MAP SHEETS AND STRIP MAPS ARE AVAILABLE TO THE PUBLIC FROM: RIGHT OF WAY PLANS SECTION, MAIL DROP 612E, 205 SOUTH 17TH AVENUE, PHOENIX AZ 85007, TELEPHONE (602)712-7270.

REVISED 7-28-2004