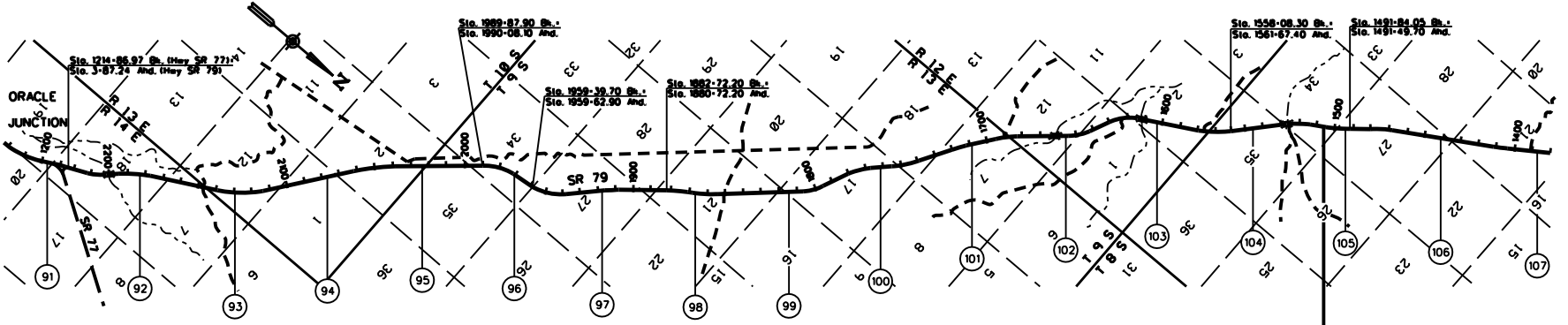


PINAL COUNTY



SM A-II-T-218
1939

SM A-II-T-227
1960



LEGEND

HIGHWAY	
MILEPOST	
STATIONING TICKS	
STRIP MAP	
SHEET MAP	

ARIZONA DEPARTMENT OF TRANSPORTATION
INTERMODAL TRANSPORTATION DIVISION
RIGHT OF WAY SECTION

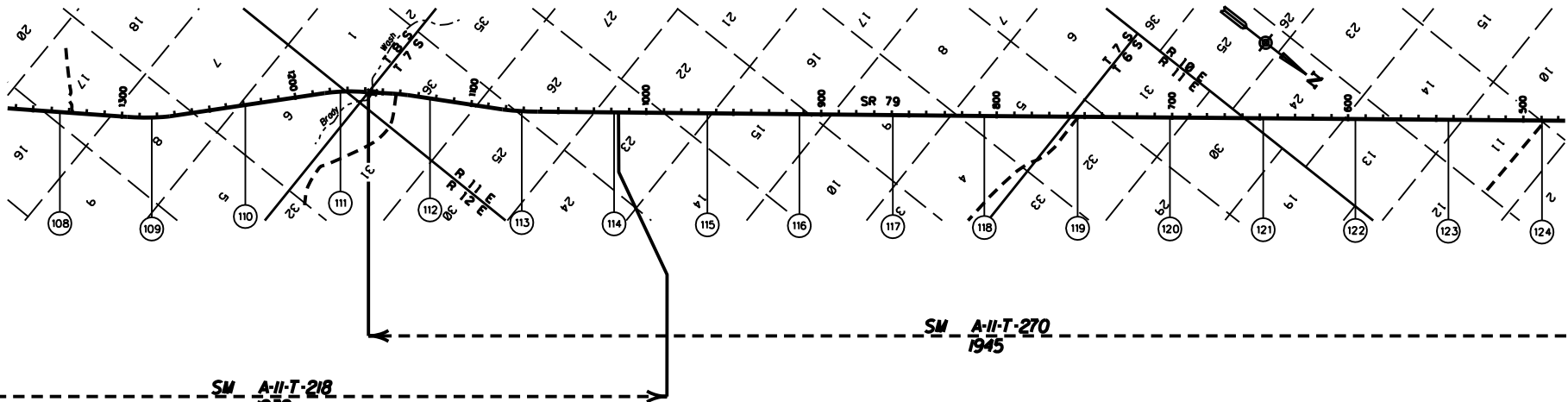
MILEPOST MAP

ROUTE SR 79 MILEPOST 91.14 - 107.00

HIGHWAY NAME
ORACLE JUNCTION - FLORENCE HWY

COPIES OF RIGHT OF WAY MAP SHEETS AND STRIP MAPS ARE AVAILABLE TO THE PUBLIC FROM: RIGHT OF WAY PLANS SECTION, MAIL DROP 612E, 205 SOUTH 17TH AVENUE, PHOENIX AZ 85007, TELEPHONE 16021712-7270.

PINAL COUNTY



LEGEND

HIGHWAY	
MILEPOST	
STATIONING TICKS	
STRIP MAP	
SHEET MAP	

ARIZONA DEPARTMENT OF TRANSPORTATION
INTERMODAL TRANSPORTATION DIVISION
RIGHT OF WAY SECTION

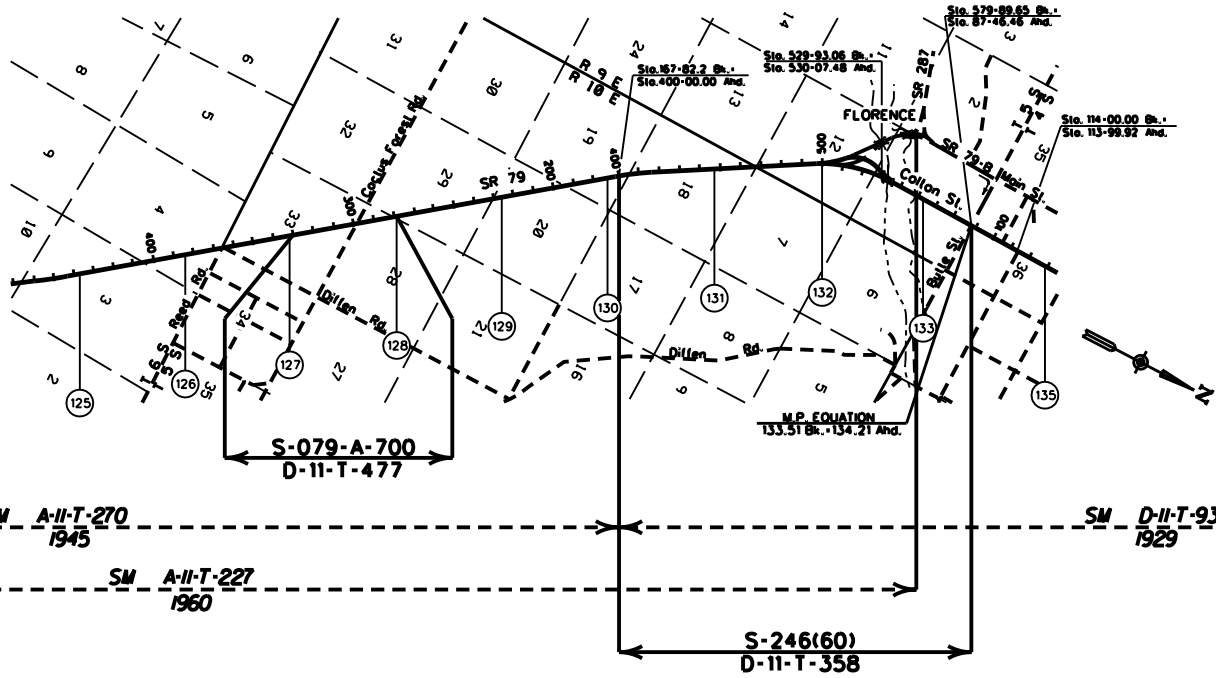
MILEPOST MAP

ROUTE SR 79 MILEPOST 108.00 - 124.00

HIGHWAY NAME ORACLE JUNCTION - FLORENCE HWY

COPIES OF RIGHT OF WAY MAP SHEETS AND STRIP MAPS ARE AVAILABLE TO THE PUBLIC FROM: RIGHT OF WAY PLANS SECTION, MAIL DROP 612E, 205 SOUTH 17TH AVENUE, PHOENIX AZ 85007, TELEPHONE 16021712-7270.

PINAL COUNTY



LEGEND

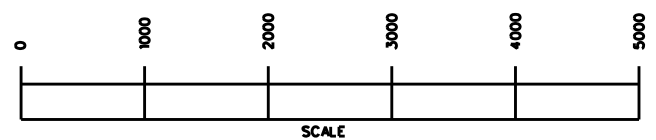
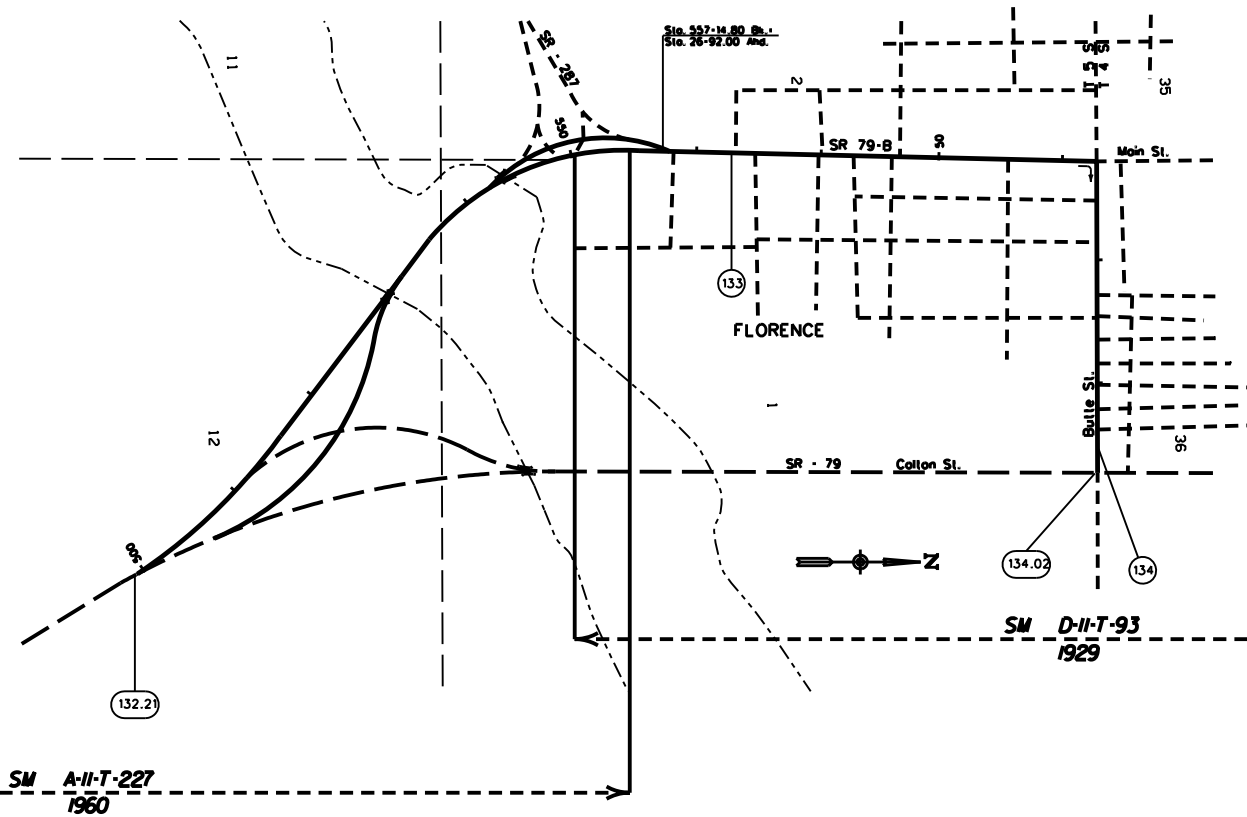
HIGHWAY	
MILEPOST	
STATIONING TICKS	
STRIP MAP	
SHEET MAP	

ARIZONA DEPARTMENT OF TRANSPORTATION INTERMODAL TRANSPORTATION DIVISION RIGHT OF WAY SECTION	
MILEPOST MAP	
ROUTE SR 79	MILEPOST 125.00 - 135.00
ORACLE JUNCTION - FLORENCE HWY	

COPIES OF RIGHT OF WAY MAP SHEETS AND STRIP MAPS ARE AVAILABLE TO THE PUBLIC FROM: RIGHT OF WAY PLANS SECTION, MAIL DROP 612E, 205 SOUTH 17TH AVENUE, PHOENIX AZ 85007, TELEPHONE 16021712-7270.

REVISED 10-26-2005

PINAL COUNTY



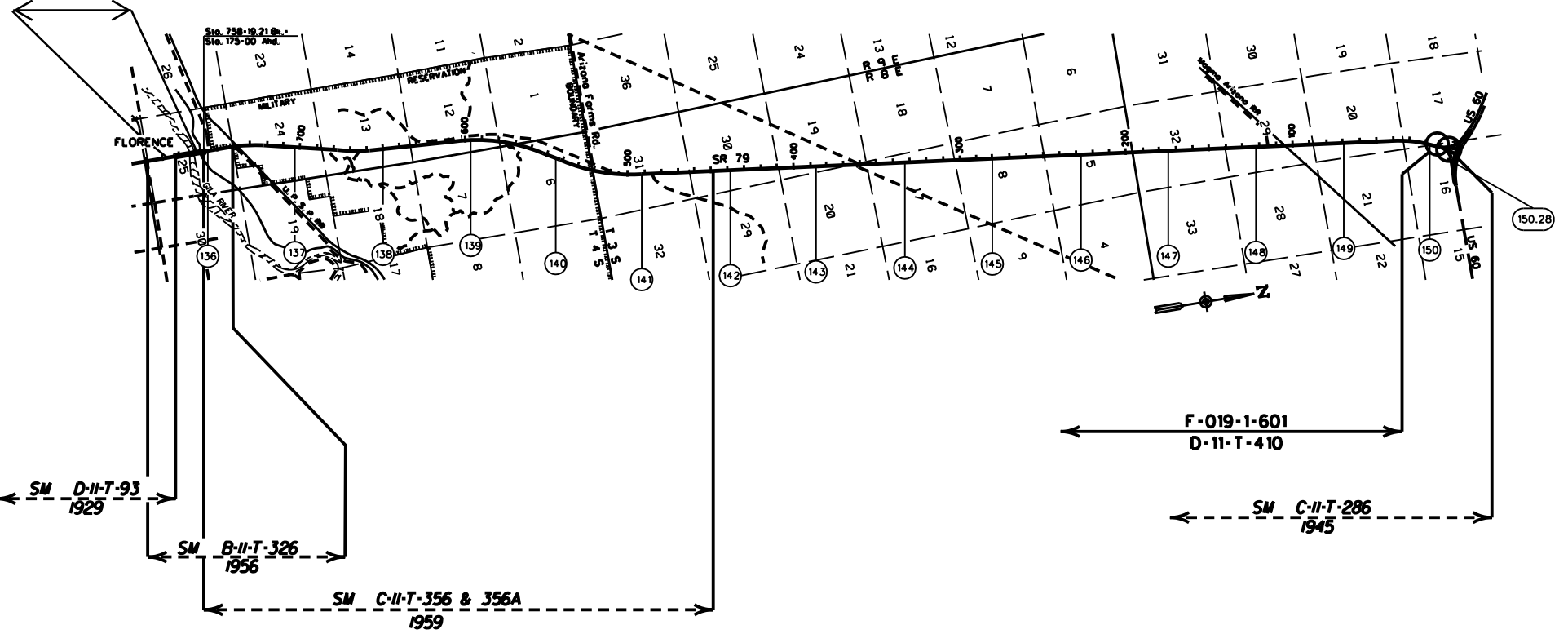
LEGEND

HIGHWAY	
MILEPOST	
STATIONING TICKS	
STRIP MAP	
SHEET MAP	

ARIZONA DEPARTMENT OF TRANSPORTATION INTERMODAL TRANSPORTATION DIVISION RIGHT OF WAY SECTION	
MILEPOST MAP	
ROUTE SR 79-B	MILEPOST 132.21 - 134.02
HIGHWAY NAME FLORENCE BUSINESS ROUTE	

COPIES OF RIGHT OF WAY MAP SHEETS AND STRIP MAPS ARE AVAILABLE TO THE PUBLIC FROM: RIGHT OF WAY PLANS SECTION, MAIL DROP 612E, 205 SOUTH 17TH AVENUE, PHOENIX AZ 85007, TELEPHONE (602) 712-7270.

PINAL COUNTY



COPIES OF RIGHT OF WAY MAP SHEETS AND STRIP MAPS ARE AVAILABLE TO THE PUBLIC FROM: RIGHT OF WAY PLANS SECTION, MAIL DROP 612E, 205 SOUTH 17TH AVENUE, PHOENIX AZ 85007, TELEPHONE (602)712-7270.

<p>LEGEND</p> <p>HIGHWAY</p> <p>MILEPOST</p> <p>STATIONING TICKS</p> <p>STRIP MAP</p> <p>SHEET MAP</p>		<p>ARIZONA DEPARTMENT OF TRANSPORTATION INTERMODAL TRANSPORTATION DIVISION RIGHT OF WAY SECTION</p>	
	<p>MILEPOST MAP</p>		
	<p>ROUTE SR 79</p> <p>MILEPOST 136.00 - 150.28</p> <p>HIGHWAY NAME</p> <p>ORACLE JUNCTION - FLORENCE HWY</p>		