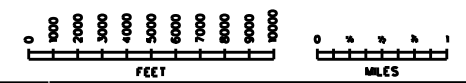
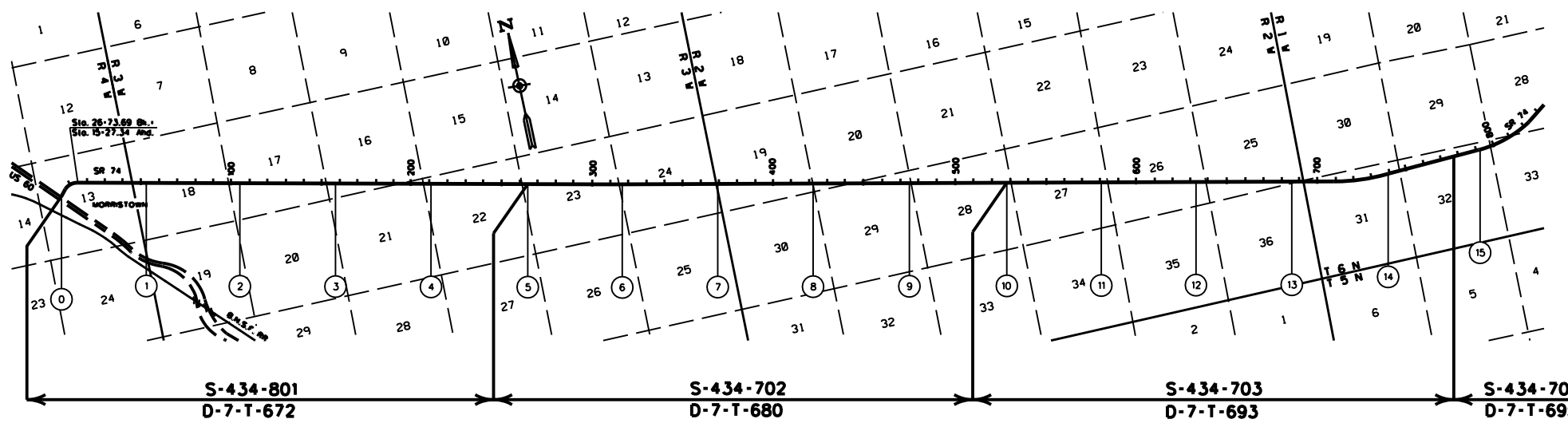


MARICOPA COUNTY

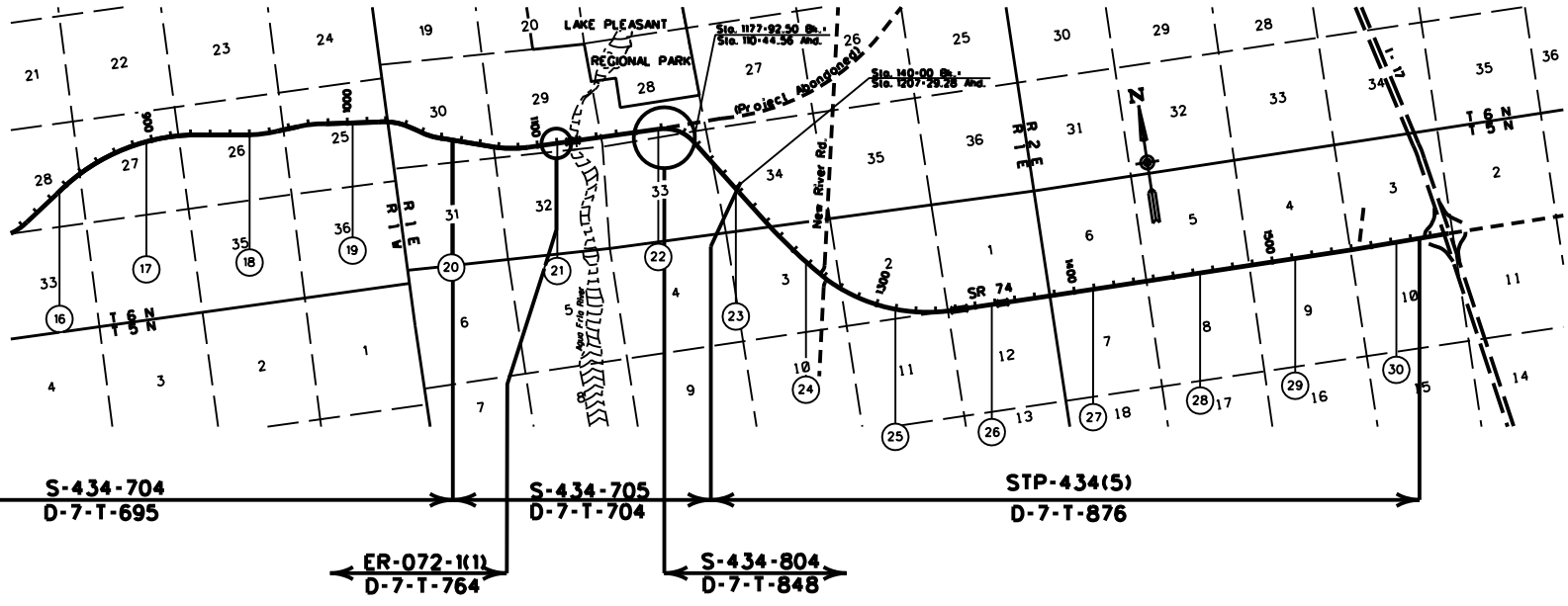


COPIES OF RIGHT OF WAY MAP SHEETS AND STRIP MAPS ARE AVAILABLE TO THE PUBLIC FROM: RIGHT OF WAY PLANS SECTION, MAIL DROP 612E, 205 SOUTH 17TH AVENUE, PHOENIX AZ 85007, TELEPHONE (602)712-7270.

REVISED 11-30-2005

<p>LEGEND</p> <p>HIGHWAY</p> <p>MILEPOST</p> <p>STATIONING TICKS</p> <p>STRIP MAP</p> <p>SHEET MAP</p>		<p>ARIZONA DEPARTMENT OF TRANSPORTATION</p> <p>INTERMODAL TRANSPORTATION DIVISION</p> <p>RIGHT OF WAY SECTION</p>	<p>1</p>
	<p>MILEPOST MAP</p>		
	<p>ROUTE SR 74 MILEPOST 0.00 - 15.00</p> <p>HIGHWAY NAME MORRISTOWN - NEW RIVER HWY</p>		

MARICOPA COUNTY



NOTE: Mileposts and Stationings are approximate.



LEGEND

HIGHWAY	
MILEPOST	
STATIONING TICKS	
STRIP MAP	
SHEET MAP	

ARIZONA DEPARTMENT OF TRANSPORTATION INTERMODAL TRANSPORTATION DIVISION RIGHT OF WAY SECTION	
MILEPOST MAP	
ROUTE SR 74	MILEPOST 16.00 - 30.84
MORRISTOWN - NEW RIVER HWY	

COPIES OF RIGHT OF WAY MAP SHEETS AND STRIP MAPS ARE AVAILABLE TO THE PUBLIC FROM: RIGHT OF WAY PLANS SECTION, MAIL DROP 612E, 205 SOUTH 17TH AVENUE, PHOENIX AZ 85007, TELEPHONE (602)712-7270.

REVISED 11-30-2005