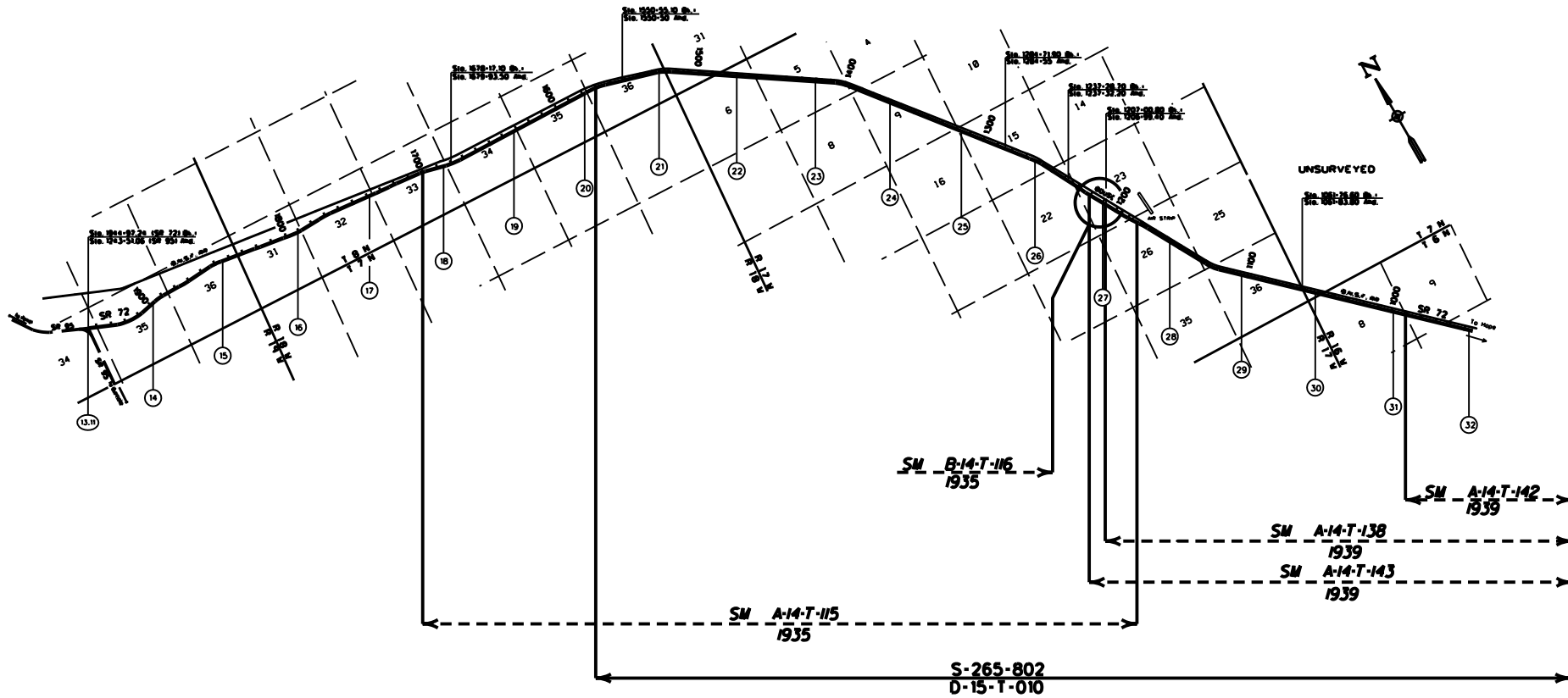


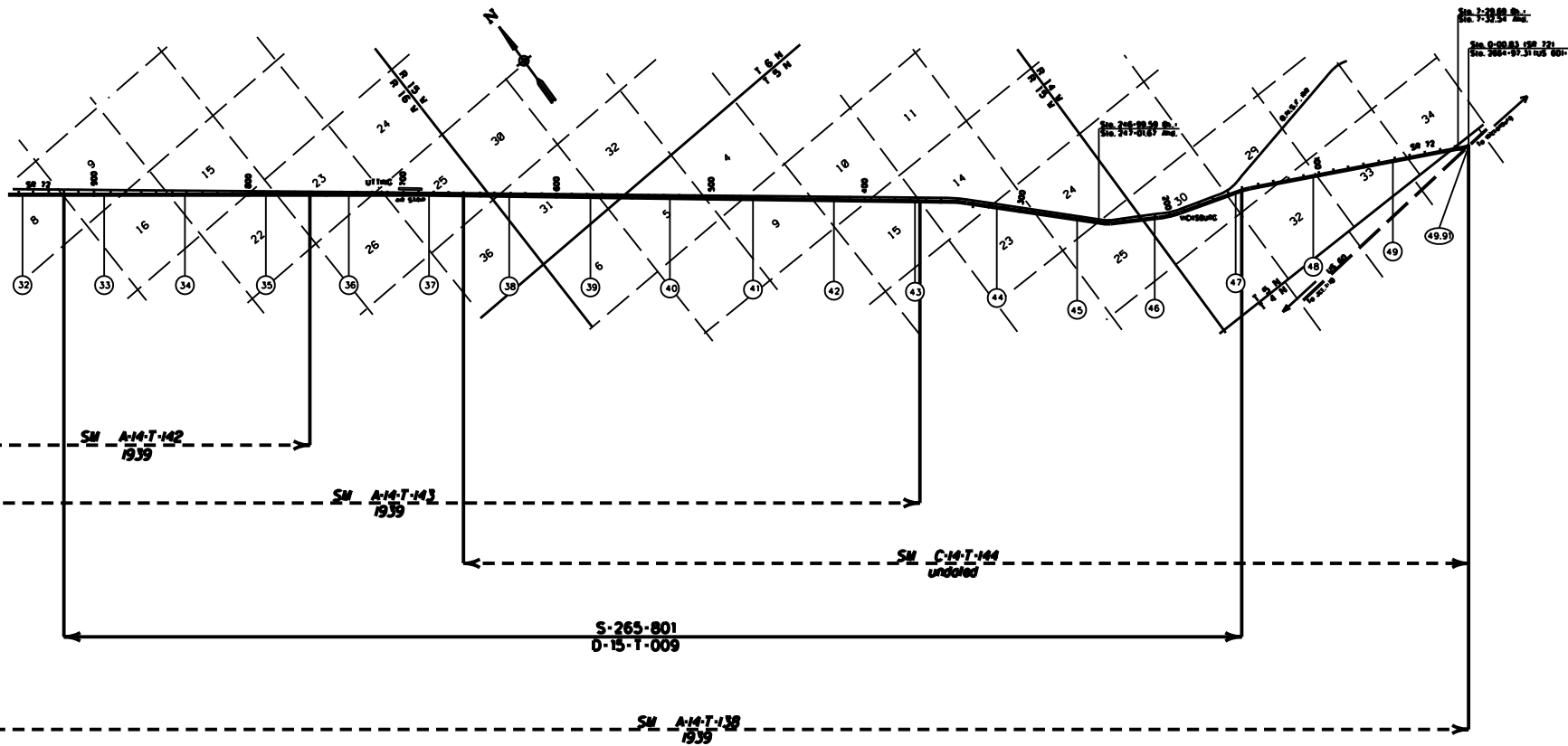
LA PAZ COUNTY



<p>LEGEND</p> <p>HIGHWAY ———</p> <p>MILEPOST (1) ———</p> <p>STATIONING TICKS ———</p> <p>STRIP MAP ———</p> <p>SHEET MAP ———</p>	<p>ARIZONA DEPARTMENT OF TRANSPORTATION INTERMODAL TRANSPORTATION DIVISION RIGHT OF WAY SECTION</p>		<p>1</p>
	<p>MILEPOST MAP</p>		
	<p>ROUTE SR 72</p>	<p>MILEPOST 13.11 - 32.00</p>	
<p>JUNCTION SR 95 - HOPE HWY</p>			

COPIES OF RIGHT OF WAY MAP SHEETS AND STRIP MAPS ARE AVAILABLE TO THE PUBLIC FROM: RIGHT OF WAY PLANS SECTION, MAIL DROP 6126, 206 SOUTH 17TH AVENUE, PHOENIX AZ 85007, TELEPHONE (602)712-7270.

LA PAZ COUNTY



LEGEND

HIGHWAY	
MILEPOST	
STATIONING TICKS	
STRIP MAP	
SHEET MAP	

ARIZONA DEPARTMENT OF TRANSPORTATION INTERMODAL TRANSPORTATION DIVISION RIGHT OF WAY SECTION	
MILEPOST MAP	
ROUTE SR 72	MILEPOST 32.00 - 49.91
JUNCTION SR 95 - HOPE HWY	

2

COPIES OF RIGHT OF WAY MAP SHEETS AND STRIP MAPS ARE AVAILABLE TO THE PUBLIC FROM: RIGHT OF WAY PLANS SECTION, MAIL DROP 612E, 206 SOUTH 17TH AVENUE, PHOENIX, AZ 85007, TELEPHONE 16021712-7270.