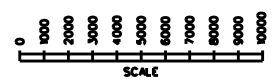
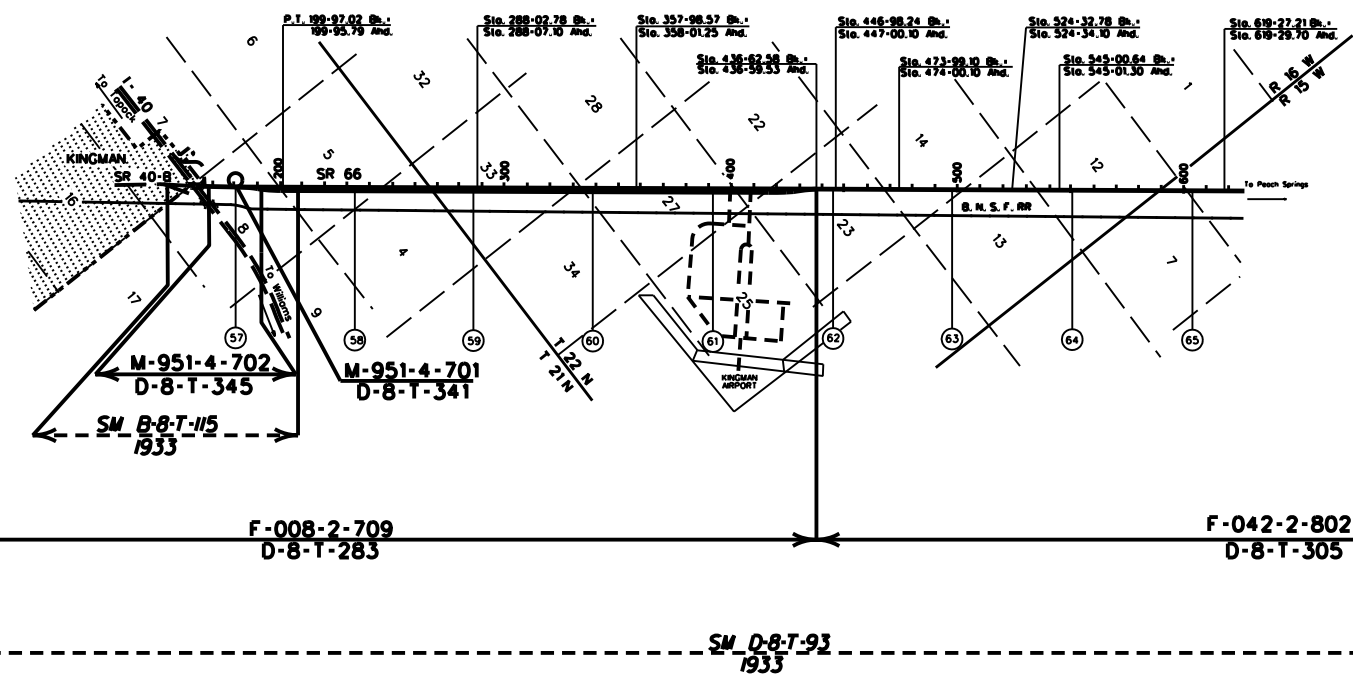


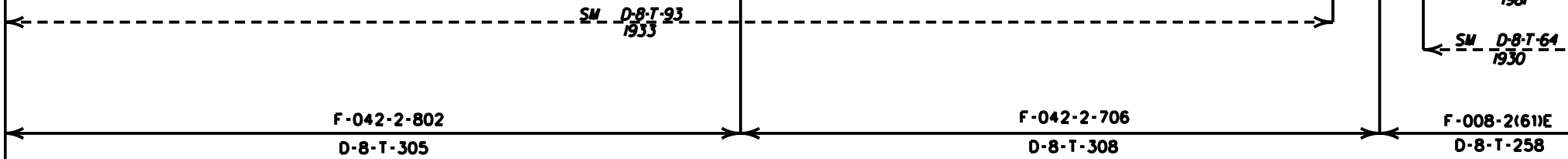
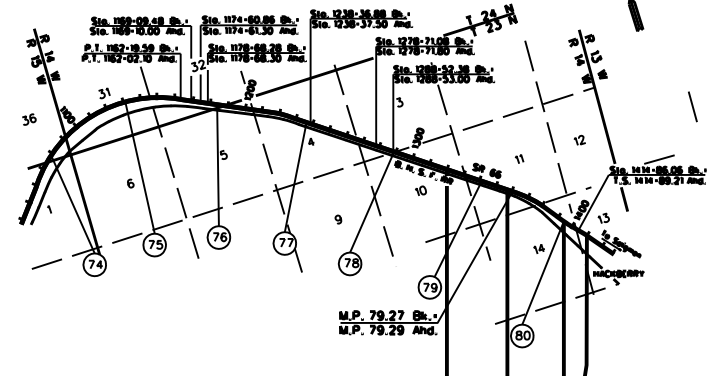
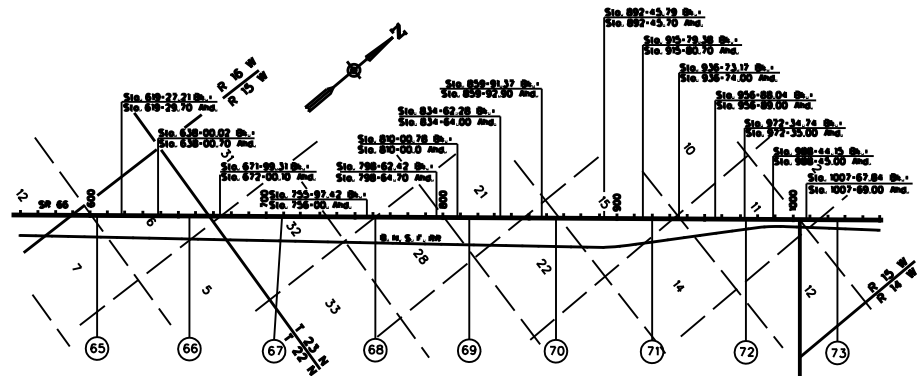
MOHAVE COUNTY



COPIES OF RIGHT OF WAY MAP SHEETS AND STRIP MAPS ARE AVAILABLE TO THE PUBLIC FROM: RIGHT OF WAY PLANS SECTION, MAIL DROP 612E, 205 SOUTH 17TH AVENUE, PHOENIX AZ 85007, TELEPHONE (602)712-7270.

<p>LEGEND</p> <p>HIGHWAY ———</p> <p>MILEPOST (1) ———</p> <p>STATIONING TICKS ———</p> <p>STRIP MAP ———</p> <p>SHEET MAP ———</p>	<p>ARIZONA DEPARTMENT OF TRANSPORTATION INTERMODAL TRANSPORTATION DIVISION RIGHT OF WAY SECTION</p>		<p>1</p>
	<p>MILEPOST MAP</p>		
	<p>ROUTE SR - 66</p>	<p>MILEPOST 66.67 - 68.00</p>	
<p>HIGHWAY NAME KINGMAN - SELIGMAN HWY</p>			

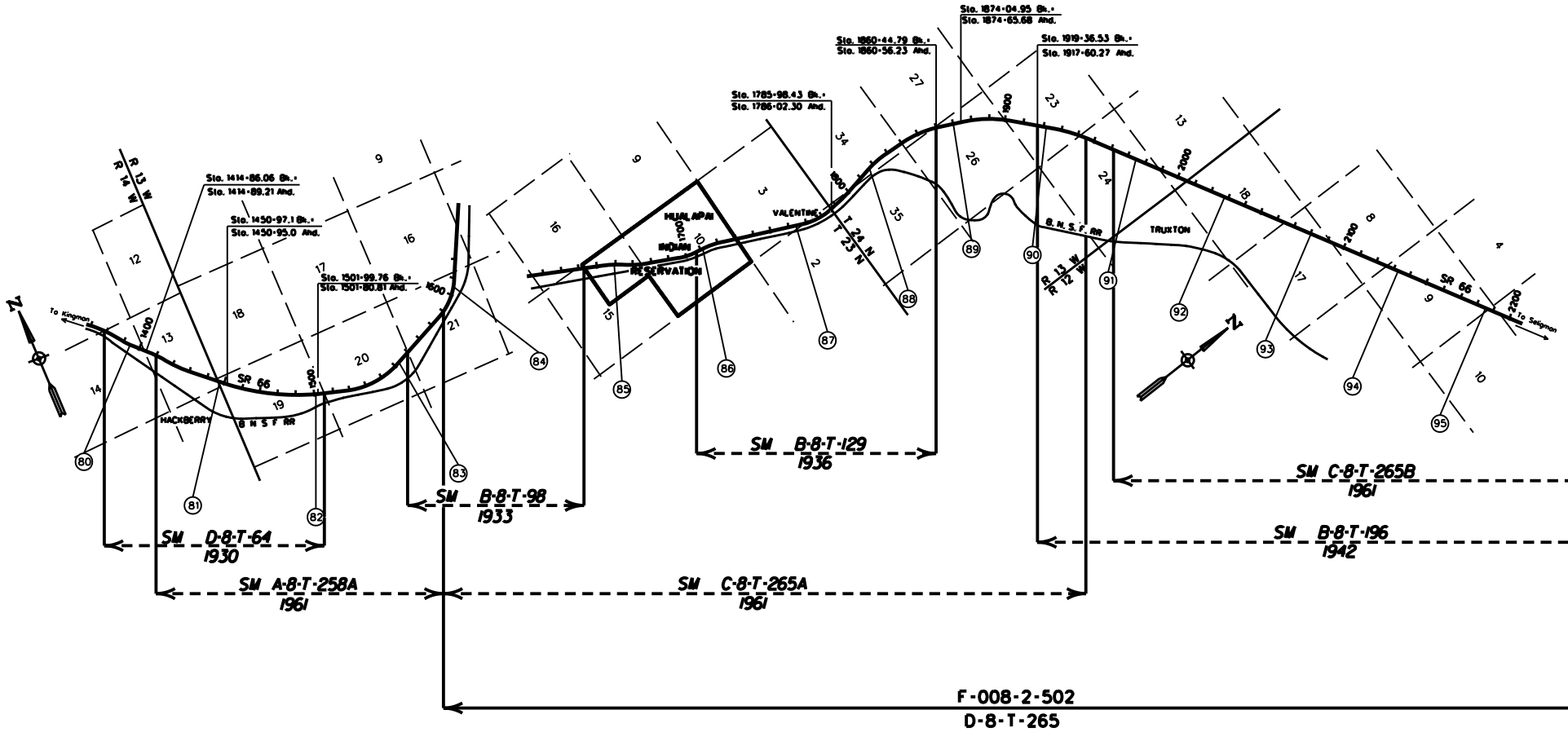
MOHAVE COUNTY



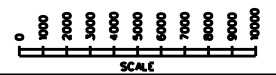
COPIES OF RIGHT OF WAY MAP SHEETS AND STRIP MAPS ARE AVAILABLE TO THE PUBLIC FROM: RIGHT OF WAY PLANS SECTION, MAIL DROP 612E, 205 SOUTH 17TH AVENUE, PHOENIX AZ 85007, TELEPHONE 16021712-7270.

<p>LEGEND</p> <p>HIGHWAY ———</p> <p>MILEPOST (1)</p> <p>STATIONING TICKS — — — — —</p> <p>STRIP MAP ———</p> <p>SHEET MAP ———</p>	<p>ARIZONA DEPARTMENT OF TRANSPORTATION INTERMODAL TRANSPORTATION DIVISION RIGHT OF WAY SECTION</p>		2
	<p>MILEPOST MAP</p> <p>ROUTE SR 66 MILEPOST 66.00 - 80.00</p> <p>HIGHWAY NAME KINGMAN - SELIGMAN HWY</p>		

MOHAVE COUNTY



F-008-2-502
D-8-T-265



LEGEND

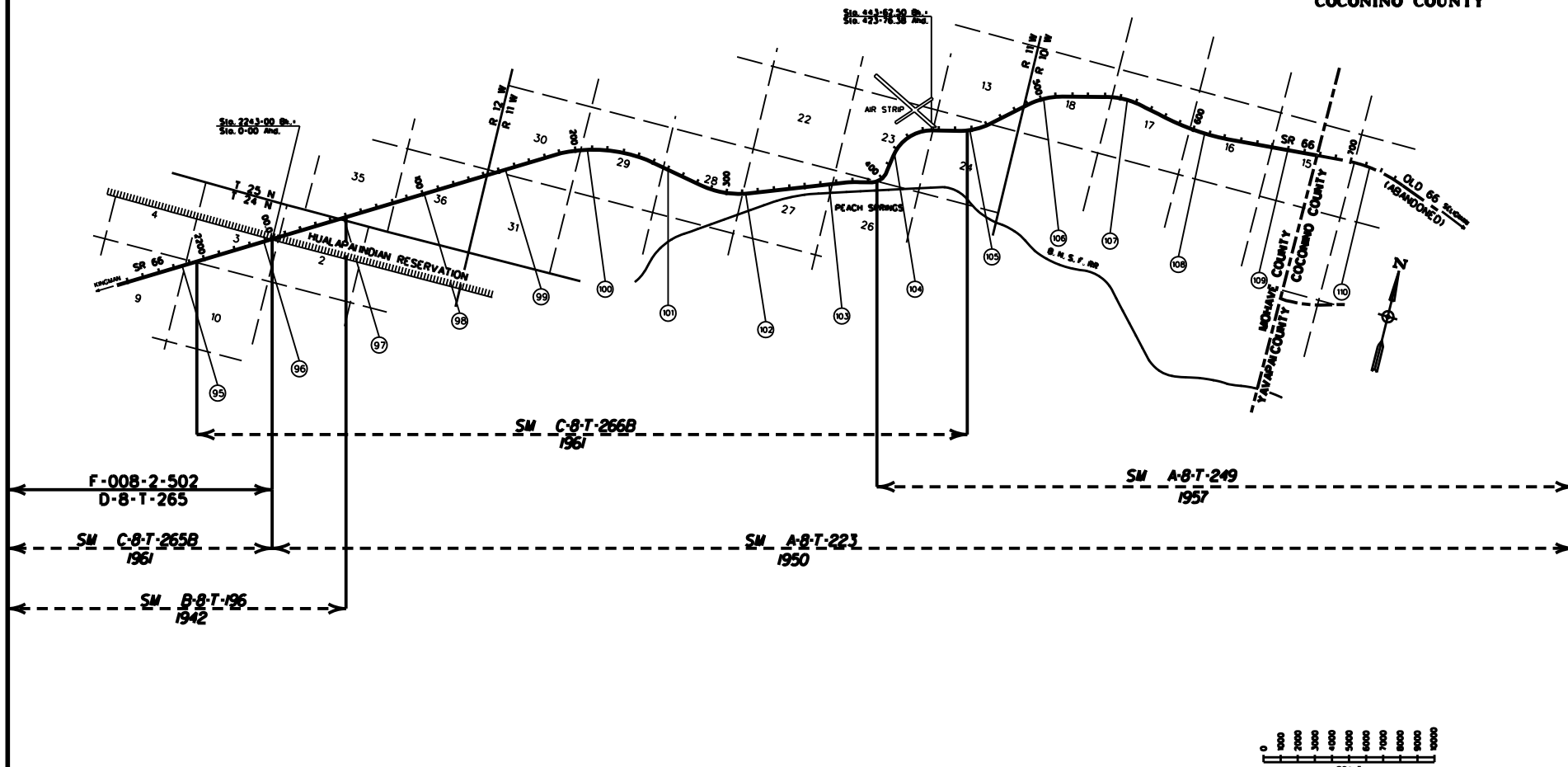
HIGHWAY	
MILEPOST	
STATIONING TICKS	
STRIP MAP	
SHEET MAP	

ARIZONA DEPARTMENT OF TRANSPORTATION INTERMODAL TRANSPORTATION DIVISION RIGHT OF WAY SECTION	
MILEPOST MAP	
ROUTE SR 66	MILEPOST 80.00 - 95.00
HIGHWAY NAME KINGMAN - SELIGMAN HWY	

COPIES OF RIGHT OF WAY MAP SHEETS AND STRIP MAPS ARE AVAILABLE TO THE PUBLIC FROM: RIGHT OF WAY PLANS SECTION, MAIL DROP 612E, 205 SOUTH 17TH AVENUE, PHOENIX AZ 85007, TELEPHONE 16021712-7270.

MOHAVE COUNTY

COCONINO COUNTY

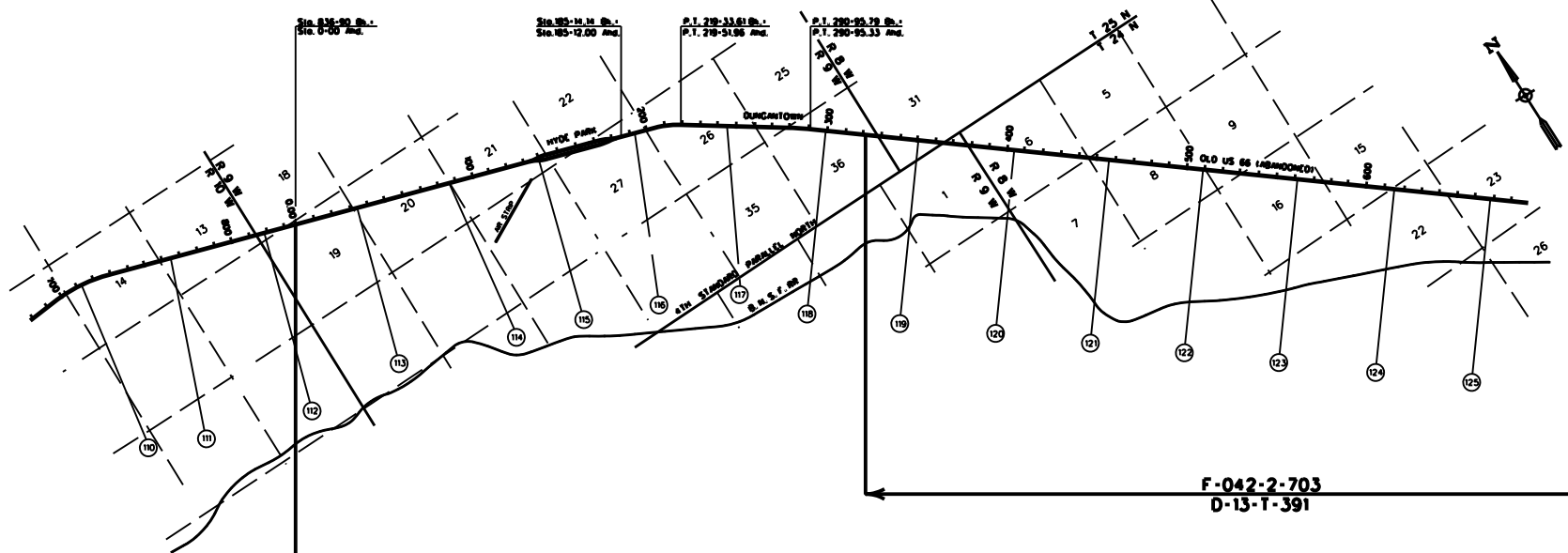


LEGEND			ARIZONA DEPARTMENT OF TRANSPORTATION INTERMODAL TRANSPORTATION DIVISION RIGHT OF WAY SECTION	4
HIGHWAY MILEPOST STATIONING TICKS STRIP MAP SHEET MAP				

COPIES OF RIGHT OF WAY MAP SHEETS AND STRIP MAPS ARE AVAILABLE TO THE PUBLIC FROM: RIGHT OF WAY PLANS SECTION, MAIL DROP 612E, 205 SOUTH 17TH AVENUE, PHOENIX AZ 85007, TELEPHONE 16021712-7270.

COCONINO COUNTY

YAVAPAI COUNTY



F-042-2-703
 D-13-T-391

F-008-2-705
 D-3-T-560

SM A-8-T-249
 1957

SM A-8-T-223
 1950

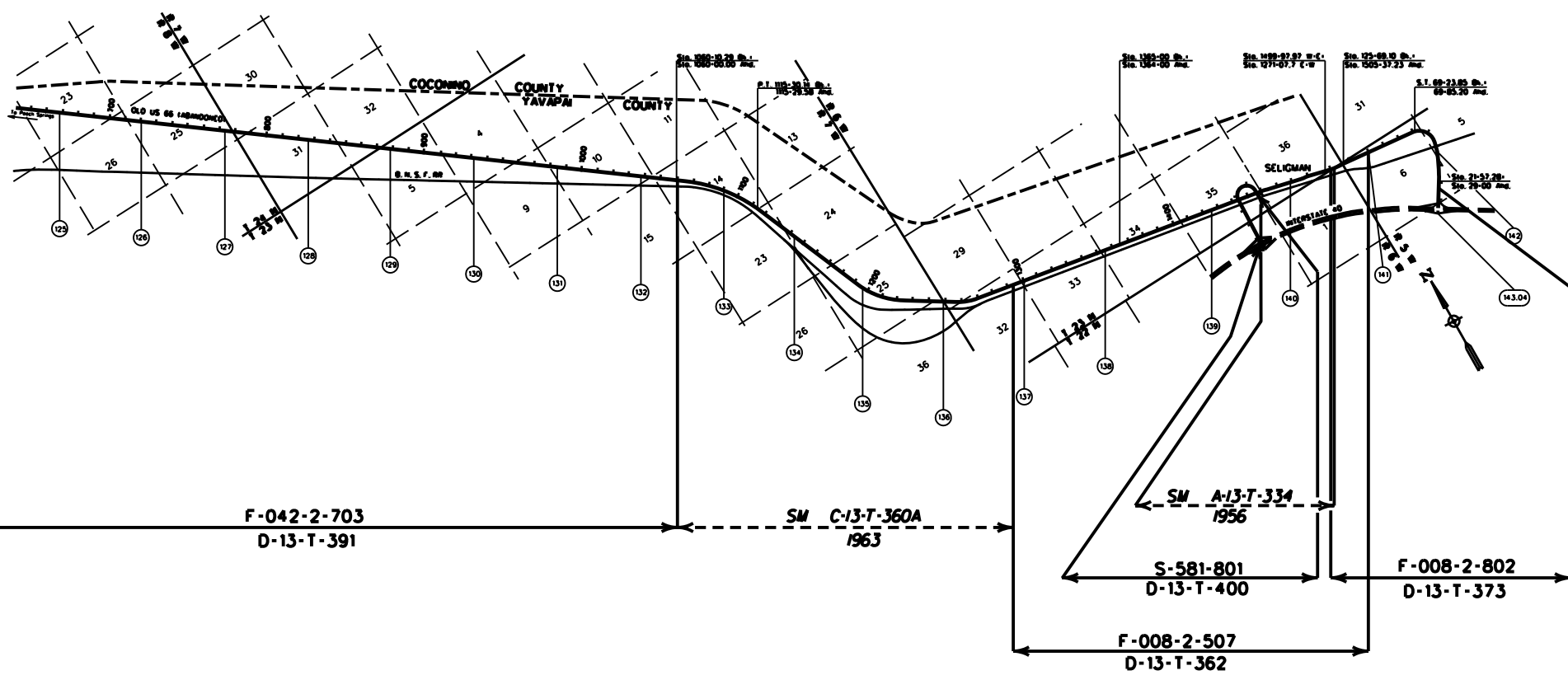


LEGEND HIGHWAY MILEPOST STATIONING TICKS STRIP MAP SHEET MAP		ARIZONA DEPARTMENT OF TRANSPORTATION INTERMODAL TRANSPORTATION DIVISION RIGHT OF WAY SECTION	<h1>5</h1>
	MILEPOST MAP		
		ROUTE 66 OLD US 66 CABANONENED 110.00 - 125.00	
		KINGMAN - SELIGMAN HWY (ABANDONED)	

COPIES OF RIGHT OF WAY MAP SHEETS AND STRIP MAPS ARE AVAILABLE TO THE PUBLIC FROM: RIGHT OF WAY PLANS SECTION, MAIL DROP 612E, 205 SOUTH 17TH AVENUE, PHOENIX AZ 85007, TELEPHONE 1802172-7270.

COCONINO COUNTY

YAVAPAI COUNTY



F-042-2-703
D-13-T-391

SM C-13-T-360A
1963

SM A-13-T-334
1956

S-581-801
D-13-T-400

F-008-2-802
D-13-T-373

F-008-2-507
D-13-T-362



COPIES OF RIGHT OF WAY MAP SHEETS AND STRIP MAPS ARE AVAILABLE TO THE PUBLIC FROM: RIGHT OF WAY PLANS SECTION, MAIL DROP 612E, 205 SOUTH 17TH AVENUE, PHOENIX AZ 85007, TELEPHONE 16021712-7270.

<p>LEGEND</p> <p>HIGHWAY</p> <p>MILEPOST</p> <p>STATIONING TICKS</p> <p>STRIP MAP</p> <p>SHEET MAP</p>		<p>ARIZONA DEPARTMENT OF TRANSPORTATION INTERMODAL TRANSPORTATION DIVISION RIGHT OF WAY SECTION</p>	<p>6</p>
		<p>MILEPOST MAP</p>	
<p>ROUTE OLD US 66 (ABANDONED) MILEPOST 126.00 - 139.96</p>		<p>HIGHWAY 40</p>	
<p>KINGMAN-SELIGMAN HWY (ABANDONED)</p>			