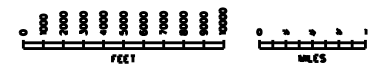
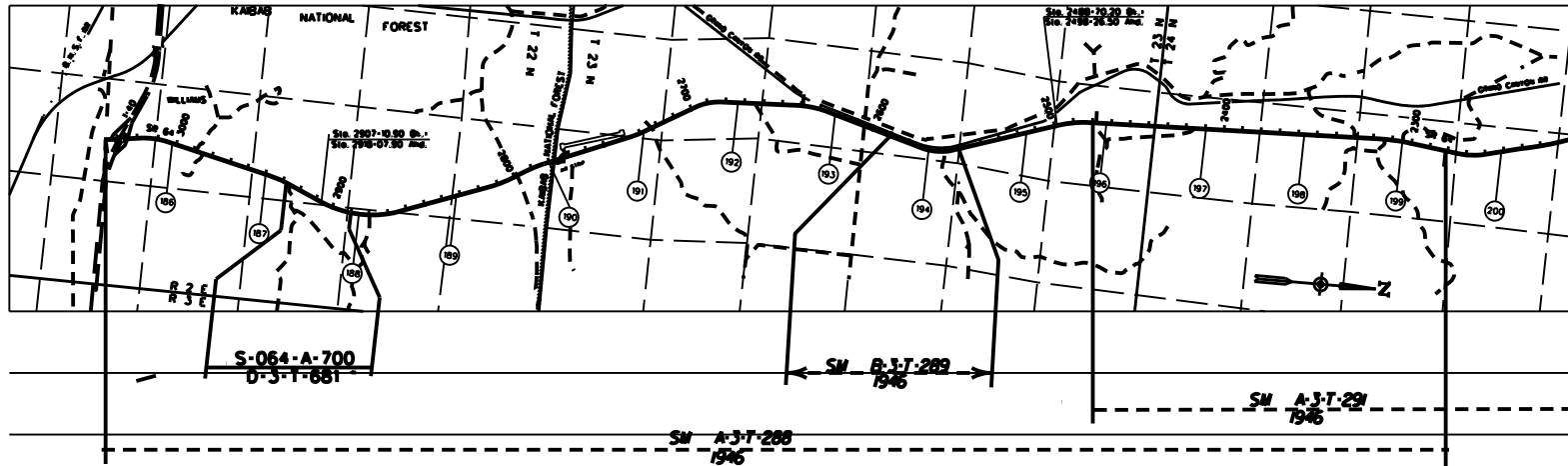


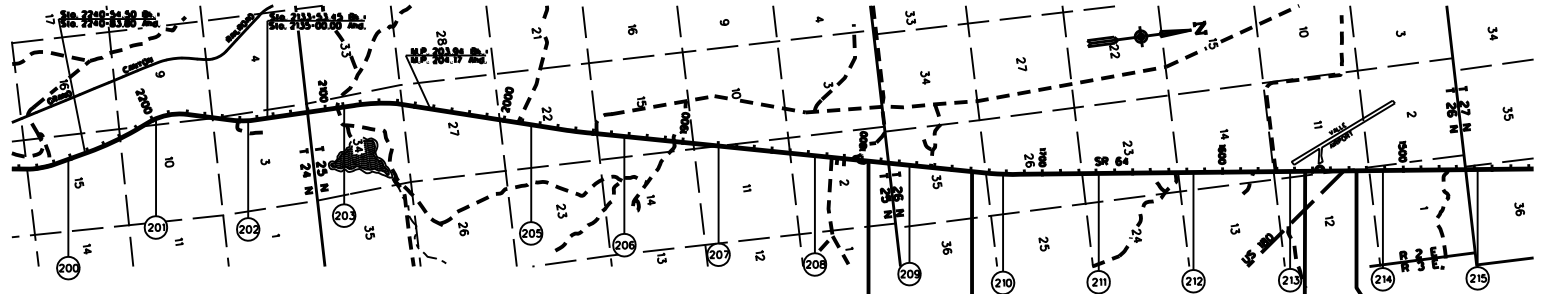
COCONINO COUNTY



<p>LEGEND</p> <p>HIGHWAY</p> <p>MILEPOST</p> <p>STATIONING TICKS</p> <p>STRIP MAP</p> <p>SHEET MAP</p>		<p>ARIZONA DEPARTMENT OF TRANSPORTATION</p> <p>INTERMODAL TRANSPORTATION DIVISION</p> <p>RIGHT OF WAY SECTION</p>	<p>1</p>
		<p><b>MILEPOST MAP</b></p> <p>BOOK SR 64 PAGES 186.81 - 300.00</p> <p><b>WILLIAMS - GRAND CANYON - CAMERON HWY</b></p>	

COPIES OF RIGHT OF WAY MAP SHEETS AND STRIP MAPS ARE AVAILABLE TO THE PUBLIC FROM: RIGHT OF WAY PLANS SECTION, MAIL DROP 612K, 205 SOUTH 17TH AVENUE, PHOENIX AZ 85007, TELEPHONE (602)712-7270.

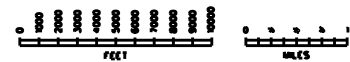
COCONINO COUNTY



SM A-3-T-291  
1946

SM A-3-T-290  
1946

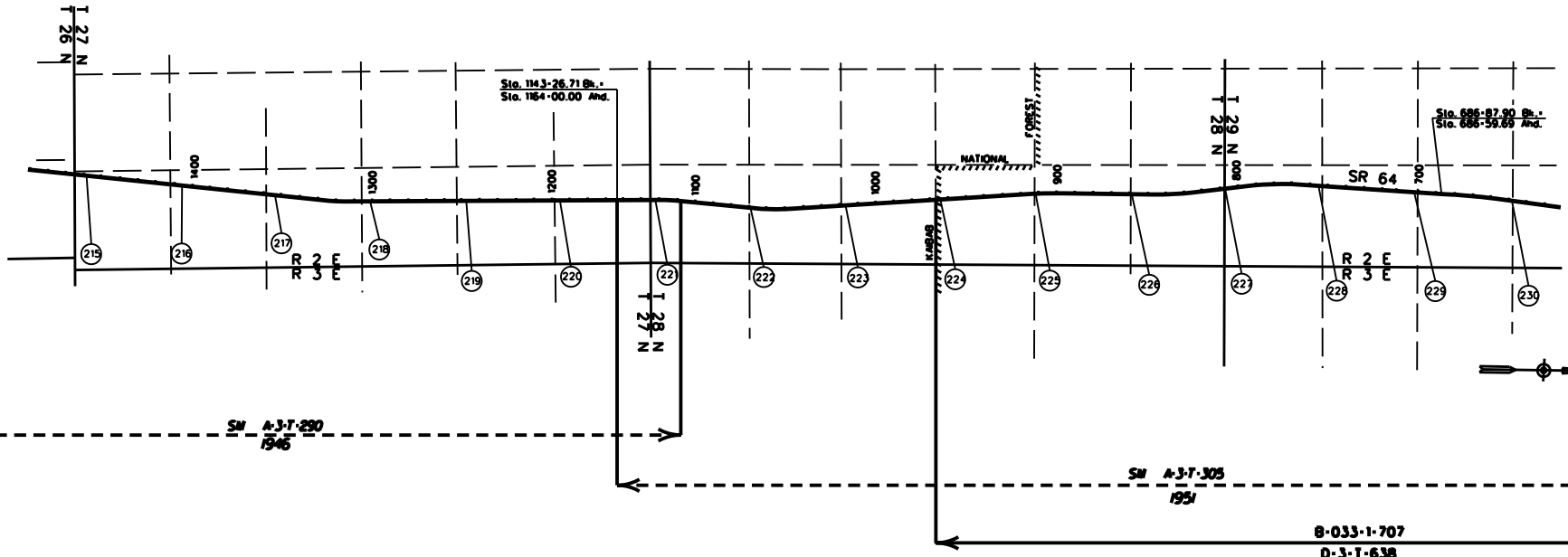
F-033-1-710  
D-3-T-662



<p>LEGEND</p> <p>HIGHWAY ———</p> <p>MILEPOST (O)</p> <p>STATIONING TICKS ———</p> <p>STRIP MAP ———</p> <p>SHEET MAP ———</p>		<p>ARIZONA DEPARTMENT OF TRANSPORTATION INTERMODAL TRANSPORTATION DIVISION RIGHT OF WAY SECTION</p>		2
		<p><b>MILEPOST MAP</b></p>		
		<p>PROJECT SR 64</p>	<p>MILEPOST 200.00 - 216.00</p>	
		<p>WILLIAMS - GRAND CANYON - CAMERON HWY</p>		

COPIES OF RIGHT OF WAY MAP SHEETS AND STRIP MAPS ARE AVAILABLE TO THE PUBLIC FROM: RIGHT OF WAY PLANS SECTION, MAIL DROP 612, 205 SOUTH 17TH AVENUE, PHOENIX AZ 85007, TELEPHONE 4602170-7270.

COCONINO COUNTY



LEGEND

HIGHWAY	
MILEPOST	
STATIONING TICKS	
STRIP MAP	
SHEET MAP	

ARIZONA DEPARTMENT OF TRANSPORTATION  
INTERMODAL TRANSPORTATION DIVISION  
RIGHT OF WAY SECTION

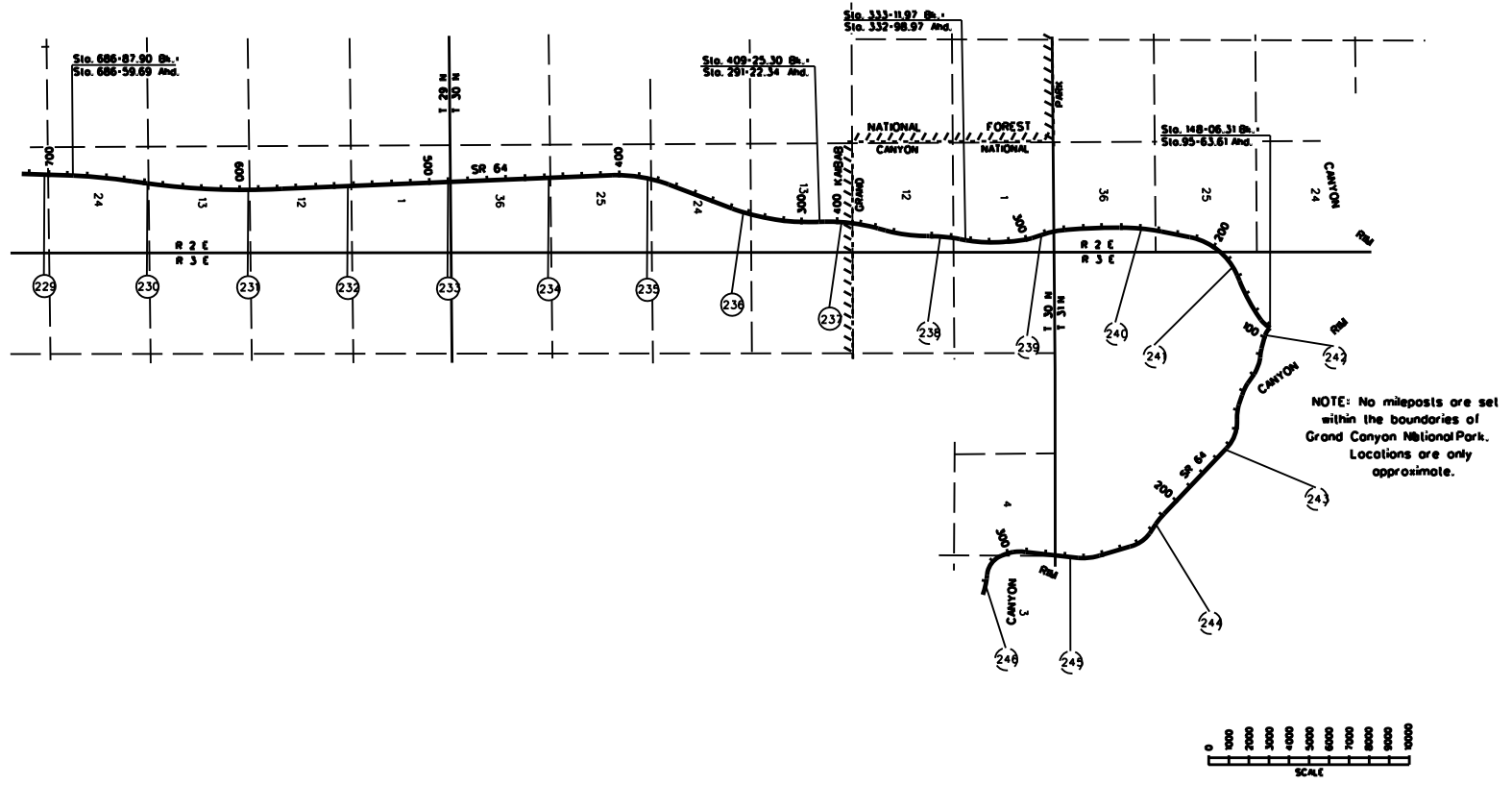
**MILEPOST MAP**

ROUTE	SR 64	MILEPOST	215.00 - 230.00
-------	-------	----------	-----------------

WILLIAMS - GRAND CANYON - CAMBRON HWY

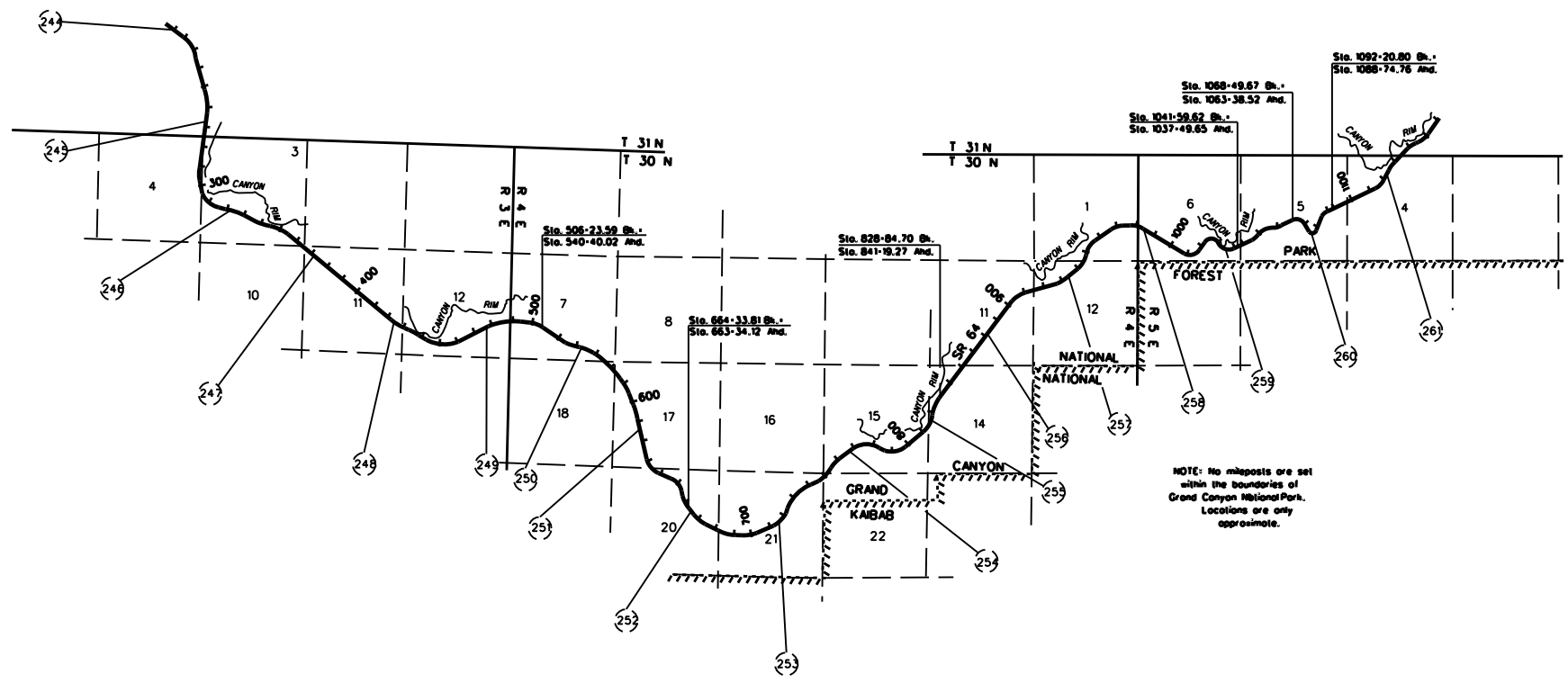
COPIES OF RIGHT OF WAY MAP SHEETS AND STRIP MAPS ARE AVAILABLE TO THE PUBLIC FROM: RIGHT OF WAY PLANS SECTION, MAIL DROP 612E, 206 SOUTH 17TH AVENUE, PHOENIX AZ 85007, TELEPHONE 16021712-7270.

COCONINO COUNTY



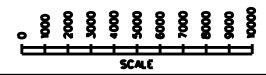
4

COCONINO COUNTY



NOTE: No mileposts are set within the boundaries of Grand Canyon National Park. Locations are only approximate.

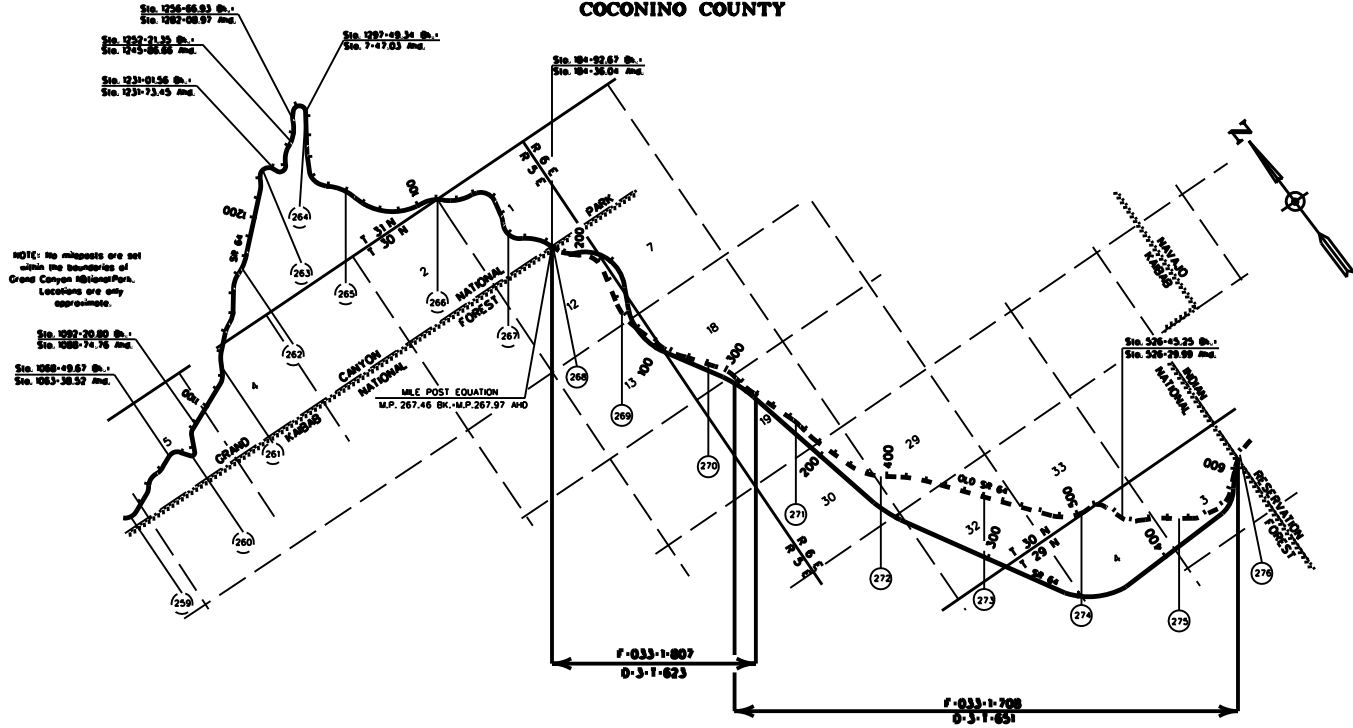
NOTE: No R/W Maps available for highway in Park. "As Built" only.



<b>LEGEND</b> HIGHWAY MILEPOST STATIONING TICKS STRIP MAP SHEET MAP		ARIZONA DEPARTMENT OF TRANSPORTATION INTERMODAL TRANSPORTATION DIVISION RIGHT OF WAY SECTION	5
	<b>MILEPOST MAP</b>		
	ROUTE SR 64 HIGHWAY NAME	MILEPOST 245.00 - 260.00 WILLIAMS - GRAND CANYON - CAMBRON HWY	

COPIES OF RIGHT OF WAY MAP SHEETS AND STRIP MAPS ARE AVAILABLE TO THE PUBLIC FROM: RIGHT OF WAY PLANS SECTION, MAIL DROP 612E, 206 SOUTH 17TH AVENUE, PHOENIX AZ 85007, TELEPHONE 16021712-7270.

### COCONINO COUNTY



NOTE: No mileposts are set within the boundaries of Grand Canyon National Park. Locations are only approximate.

Sta. 1252-71.35 Ch. - Sta. 1252-08.97 And.  
 Sta. 1252-71.35 Ch. - Sta. 1252-08.97 And.  
 Sta. 1231-01.56 Ch. - Sta. 1231-73.43 And.

Sta. 1252-70.80 Ch. - Sta. 1252-14.76 And.  
 Sta. 1252-08.97 Ch. - Sta. 1252-38.52 And.

Sta. 326-43.75 Ch. - Sta. 326-28.99 And.

F-033-1-807  
 O-S-T-623

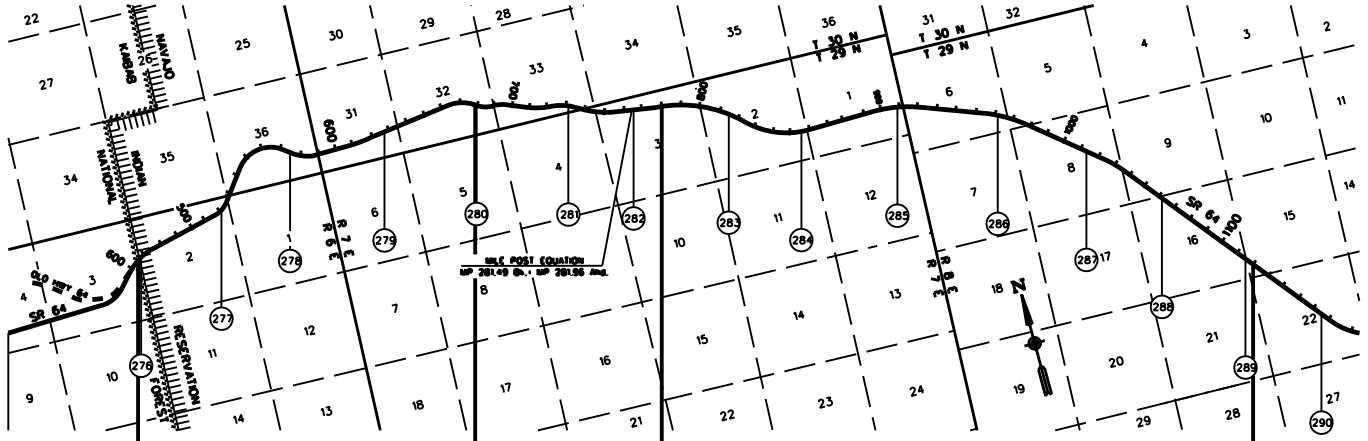
F-033-1-208  
 O-S-T-651



<b>LEGEND</b> HIGHWAY MILEPOST STATIONING TICKS STRIP MAP SHEET MAP		ARIZONA DEPARTMENT OF TRANSPORTATION INTERMODAL TRANSPORTATION DIVISION RIGHT OF WAY SECTION	<h1>6</h1>
	<b>MILEPOST MAP</b>		
	SR 64	360.00 - 375.00	
<b>WILLIAMS - GRAND CANYON - CAMERON HWY</b>			

COPIES OF RIGHT OF WAY MAP SHEETS AND STRIP MAPS ARE AVAILABLE TO THE PUBLIC FROM: RIGHT OF WAY PLANS SECTION, MAIL DROP 612, 206 SOUTH 17TH AVENUE, PHOENIX AZ 85007, TELEPHONE 1802712-7270.

COCONINO COUNTY



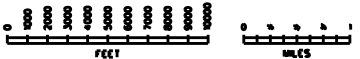
F-033-1-708  
D-3-T-651

F-033-1-801  
D-3-T-591

F-033-1-802  
D-3-T-590

F-033-1-808  
D-3-T-617

F-033-1-809  
D-3-T-643

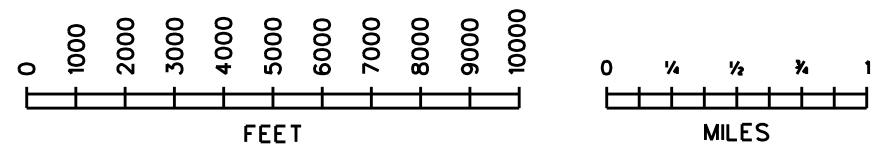
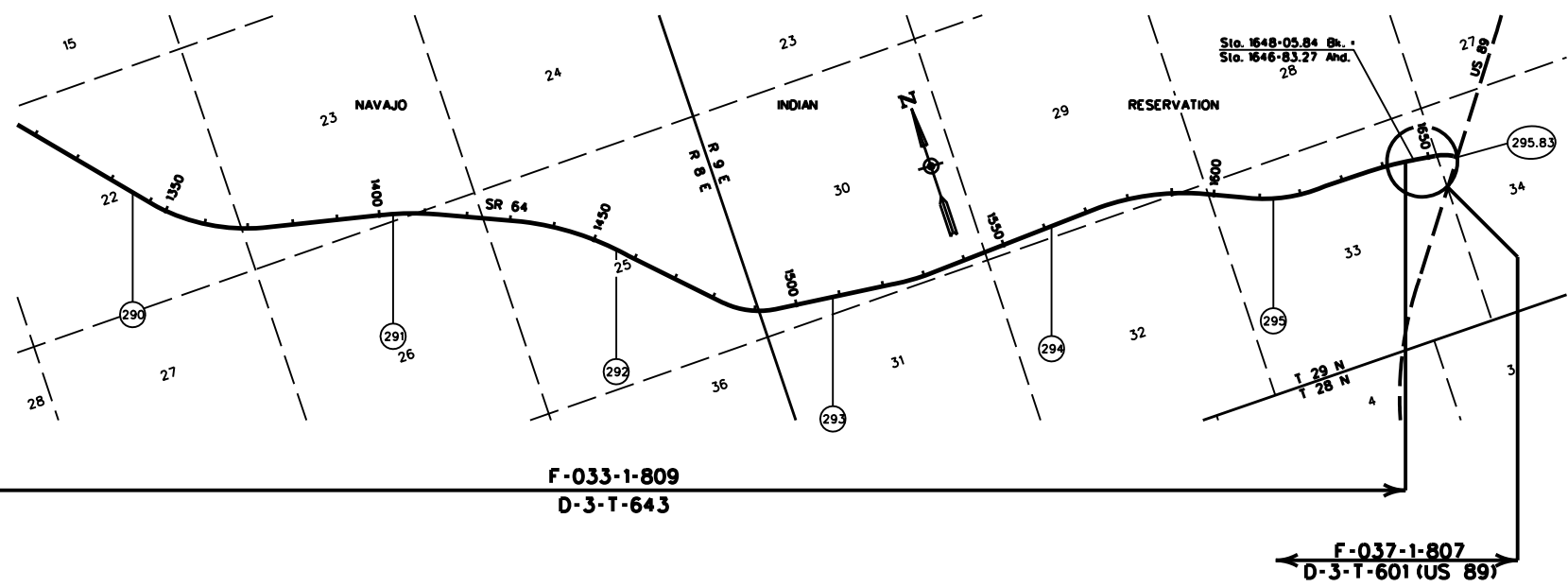


<b>LEGEND</b> HIGHWAY MILEPOST STATIONING TICKS STRIP MAP SHEET MAP		ARIZONA DEPARTMENT OF TRANSPORTATION INTERMODAL TRANSPORTATION DIVISION RIGHT OF WAY DIVISION		7
		<b>MILEPOST MAP</b>		
		ROUTE SR 64	MILEPOST 275.00 - 290.00	
<b>WILLIAMS - GRAND CANYON - CAMERON HWY</b>				

COPIES OF RIGHT OF WAY MAP SHEETS AND STRIP MAPS ARE AVAILABLE TO THE PUBLIC FROM: RIGHT OF WAY PLANS SECTION, MAIL DROP 612L, 205 SOUTH 17TH AVENUE, PHOENIX AZ 85007, TELEPHONE 1602172-7270.

REVISED 11-10-2005

COCONINO COUNTY



<p>LEGEND</p> <p>HIGHWAY ———</p> <p>MILEPOST (O)</p> <p>STATIONING TICKS — —</p> <p>STRIP MAP ———&gt;</p> <p>SHEET MAP ———&gt;</p>	<p>ARIZONA DEPARTMENT OF TRANSPORTATION                  INTERMODAL TRANSPORTATION DIVISION                  RIGHT OF WAY SECTION</p>		<p>8</p>
	<p><b>MILEPOST MAP</b></p>		
	<p>ROUTE SR 64</p>	<p>MILEPOST 290.00 - 295.83</p>	
<p>HIGHWAY NAME</p> <p><b>WILLIAMS - GRAND CANYON - CAMBRON HWY</b></p>			

COPIES OF RIGHT OF WAY MAP SHEETS AND STRIP MAPS ARE AVAILABLE TO THE PUBLIC FROM: RIGHT OF WAY PLANS SECTION, MAIL DROP 612E, 205 SOUTH 17TH AVENUE, PHOENIX AZ 85007, TELEPHONE 16021712-7270.

REVISED 11-18-2005