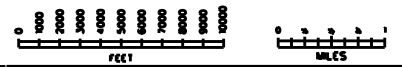
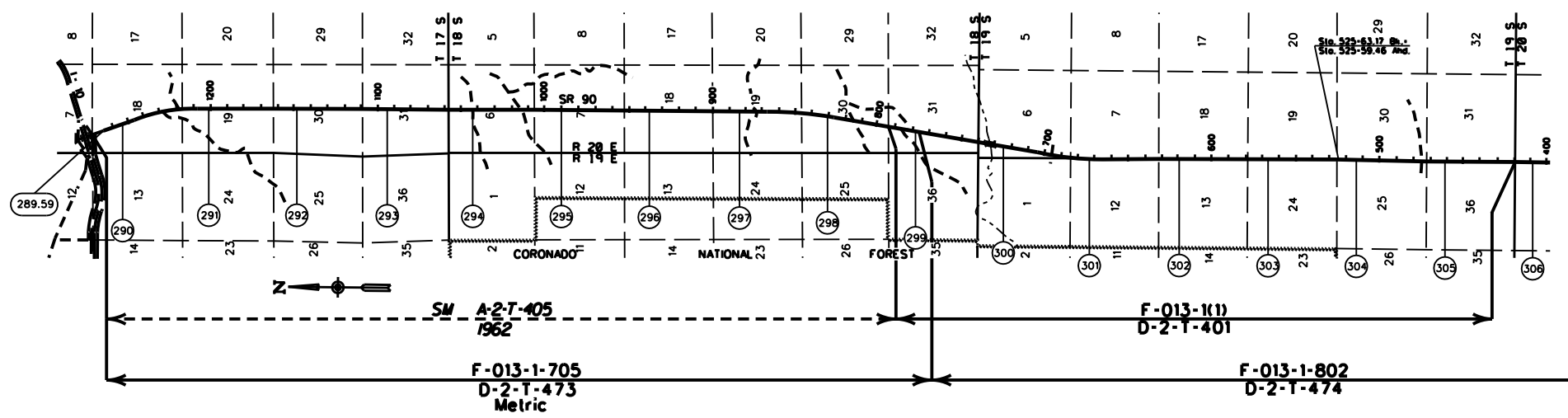


COCHISE COUNTY



LEGEND

HIGHWAY	
MILEPOST	
STATIONING TICKS	
STRIP MAP	
SHEET MAP	

ARIZONA DEPARTMENT OF TRANSPORTATION
INTERMODAL TRANSPORTATION DIVISION
RIGHT OF WAY SECTION

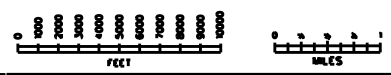
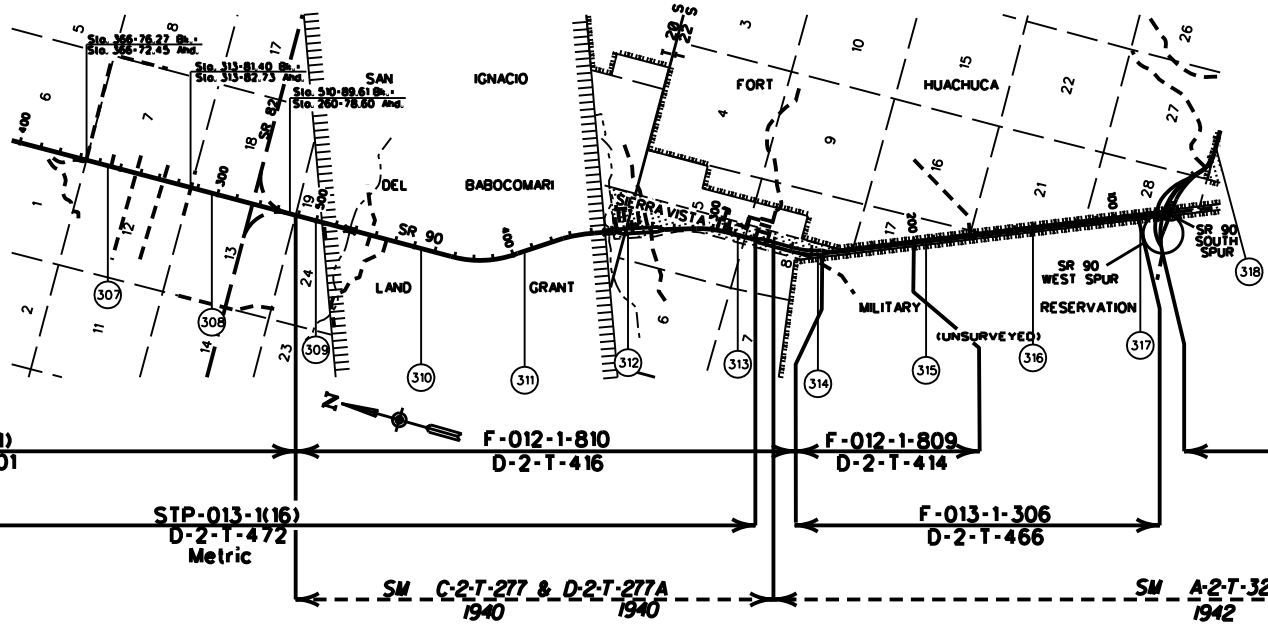
MILEPOST MAP

ROUTE SR 90 MILEPOST 289.59 - 306.00

HIGHWAY NAME WHETSTONE T.I. - JUNCTION SR 80 HWY

COPIES OF RIGHT OF WAY MAP SHEETS AND STRIP MAPS ARE AVAILABLE TO THE PUBLIC FROM: RIGHT OF WAY PLANS SECTION, MAIL DROP 612E, 205 SOUTH 17TH AVENUE, PHOENIX AZ 85007, TELEPHONE (602) 712-7270.

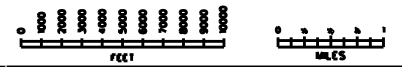
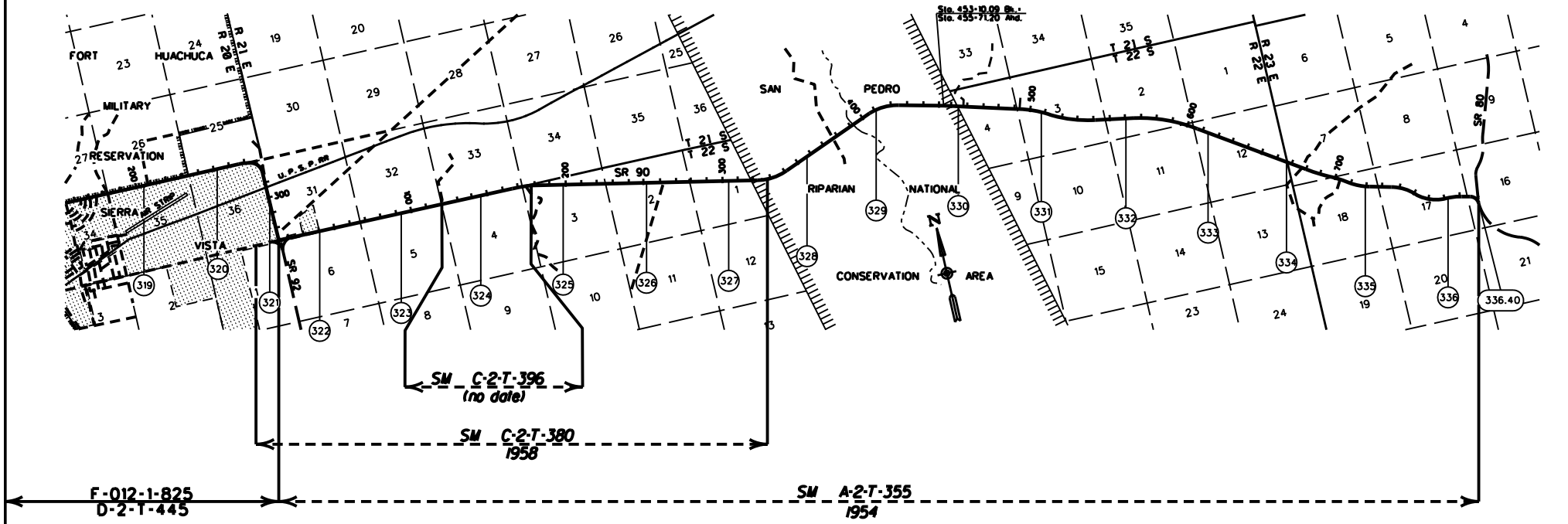
COCHISE COUNTY



<p>LEGEND</p> <p>HIGHWAY</p> <p>MILEPOST</p> <p>STATIONING TICKS</p> <p>STRIP MAP</p> <p>SHEET MAP</p>		<p>ARIZONA DEPARTMENT OF TRANSPORTATION INTERMODAL TRANSPORTATION DIVISION RIGHT OF WAY SECTION</p>		2
		<p>MILEPOST MAP</p>		
		<p>ROUTE SR 90</p>	<p>MILEPOST 307.00 - 318.00</p>	
		<p>WHETSTONE T.I. - JUNCTION SR 80 HWY</p>		

COPIES OF RIGHT OF WAY MAP SHEETS AND STRIP MAPS ARE AVAILABLE TO THE PUBLIC FROM: RIGHT OF WAY PLANS SECTION, MAIL DROP 612E, 205 SOUTH 17TH AVENUE, PHOENIX AZ 85007, TELEPHONE (602) 712-7270.

COCHISE COUNTY



LEGEND

- HIGHWAY:
- MILEPOST:
- STATIONING TICKS:
- STRIP MAP:
- SHEET MAP:

ARIZONA DEPARTMENT OF TRANSPORTATION
INTERMODAL TRANSPORTATION DIVISION
RIGHT OF WAY SECTION

MILEPOST MAP

ROUTE SR 90 MILEPOST 319.00 - 336.40

HIGHWAY NAME
WHETSTONE T.I. - JUNCTION SR 80 HWY

COPIES OF RIGHT OF WAY MAP SHEETS AND STRIP MAPS ARE AVAILABLE TO THE PUBLIC FROM: RIGHT OF WAY PLANS SECTION, MAIL DROP 612E, 205 SOUTH 17TH AVENUE, PHOENIX AZ 85007, TELEPHONE (602)712-7270.