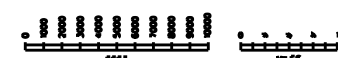
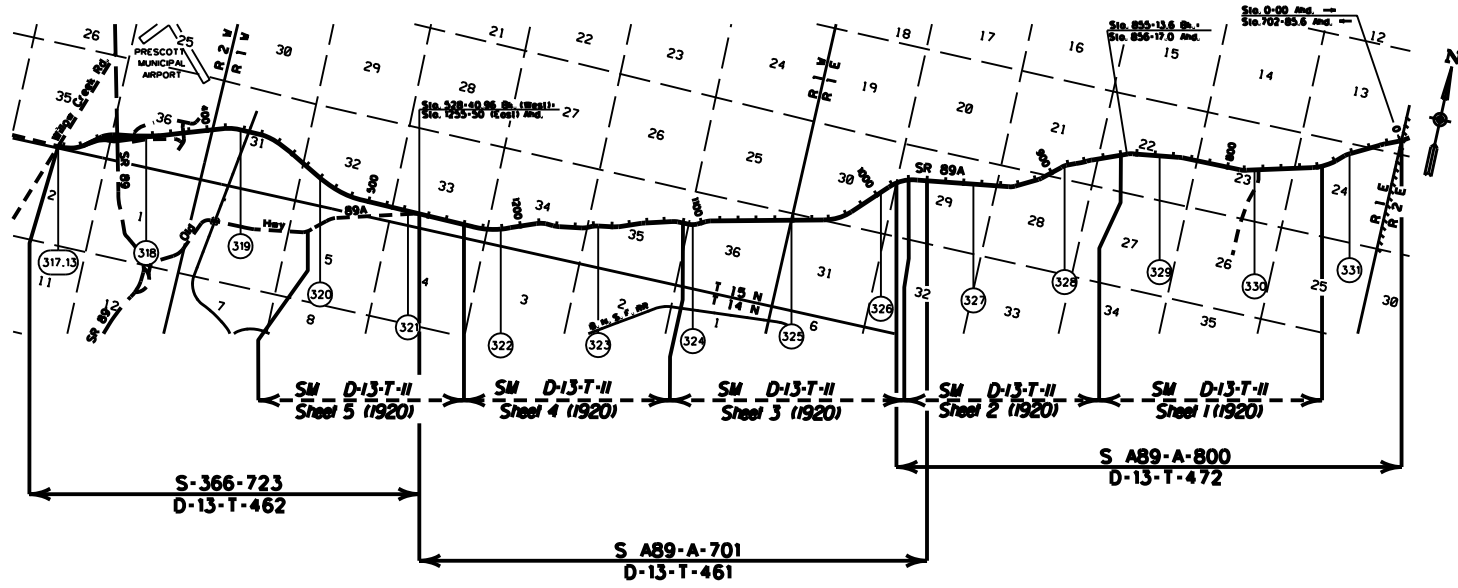


YAVAPAI COUNTY

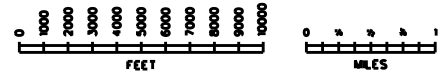
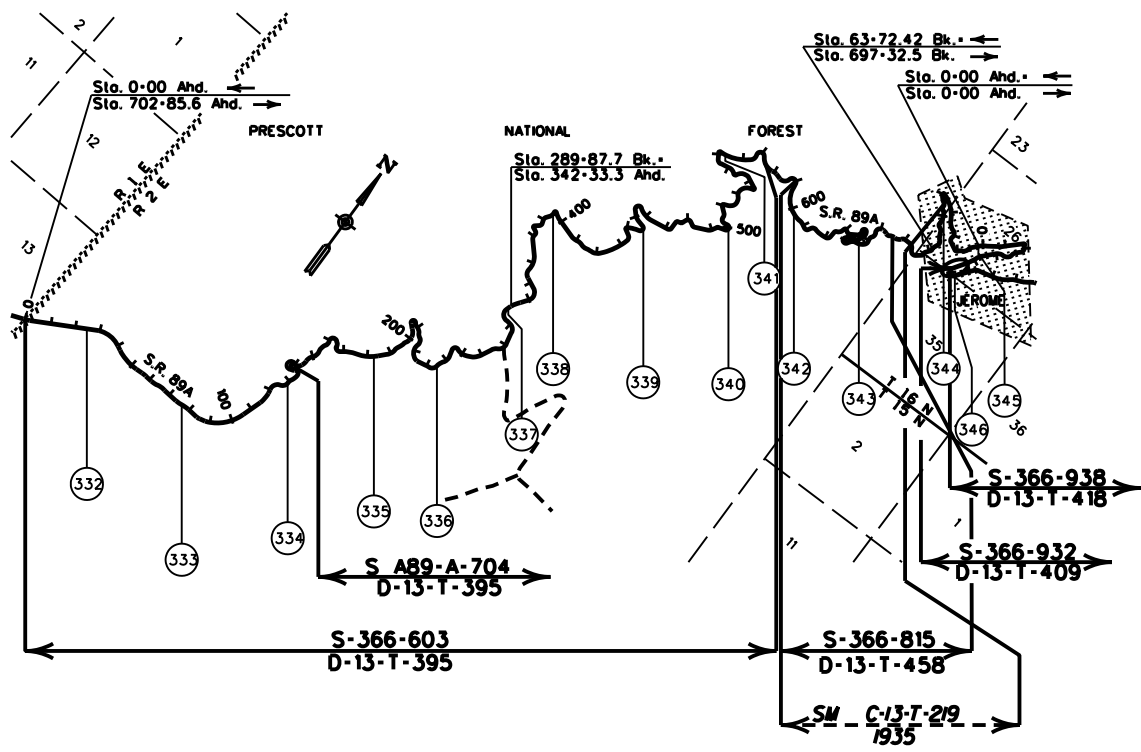


COPIES OF RIGHT OF WAY MAP SHEETS AND STRIP MAPS ARE AVAILABLE TO THE PUBLIC FROM: RIGHT OF WAY PLANS SECTION, MAIL DROP 612E, 205 SOUTH 17TH AVENUE, PHOENIX AZ 85007, TELEPHONE 1802172-7270.

REVISED 03-10-2005

<p><b>LEGEND</b></p> <p>HIGHWAY ———</p> <p>MILEPOST ○</p> <p>STATIONING TICKS ———</p> <p>STRIP MAP ———</p> <p>SHEET MAP ———</p>	<p>ARIZONA DEPARTMENT OF TRANSPORTATION INTERMODAL TRANSPORTATION DIVISION RIGHT OF WAY SECTION</p>		1
	<p><b>MILEPOST MAP</b></p>		
	<p>ROUTE SR 89A</p>	<p>MILEPOST 317.15 - 331.00</p>	

YAVAPAI COUNTY

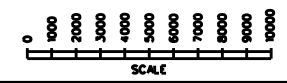
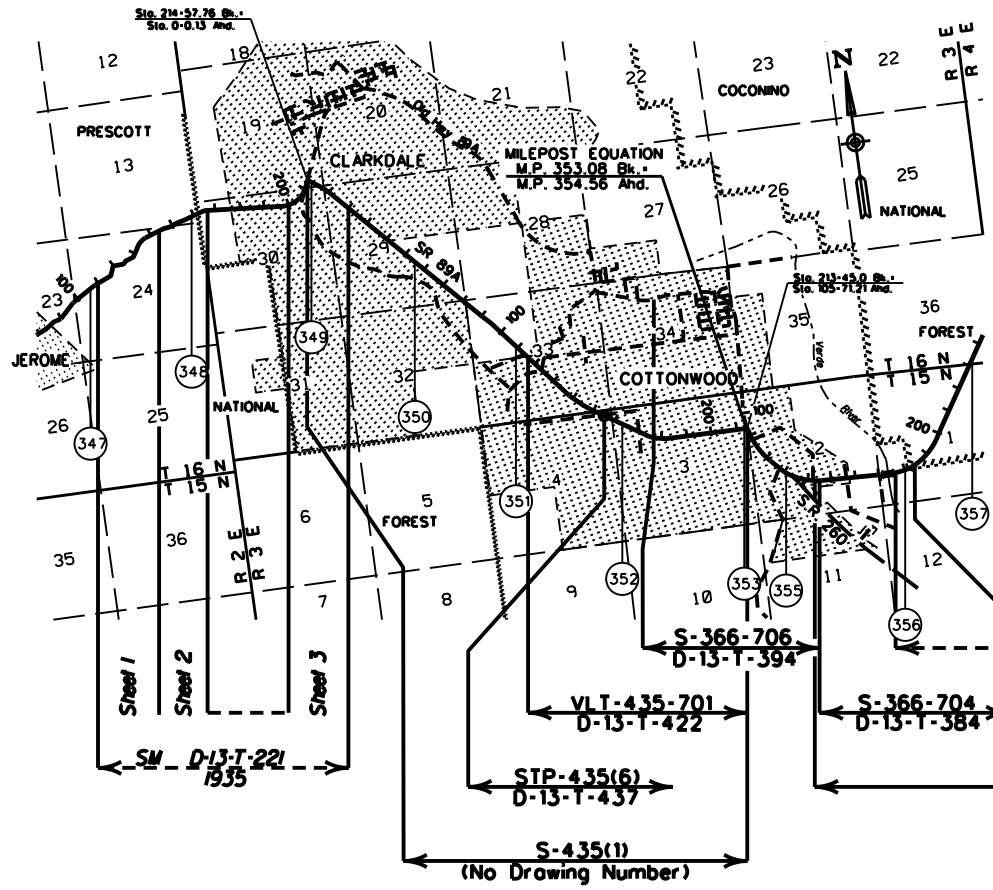


COPIES OF RIGHT OF WAY MAP SHEETS AND STRIP MAPS ARE AVAILABLE TO THE PUBLIC FROM: RIGHT OF WAY PLANS SECTION, MAIL DROP 612E, 205 SOUTH 17TH AVENUE, PHOENIX AZ 85007, TELEPHONE (602)712-7270.

REVISED 02-05-2005

<p><b>LEGEND</b></p> <p>HIGHWAY ———</p> <p>MILEPOST (1)</p> <p>STATIONING TICKS ———</p> <p>STRIP MAP ———</p> <p>SHEET MAP ———</p>	<p>ARIZONA DEPARTMENT OF TRANSPORTATION INTERMODAL TRANSPORTATION DIVISION RIGHT OF WAY SECTION</p>		<p><b>2</b></p>
	<p><b>MILEPOST MAP</b></p>		
	<p>ROUTE SR 89A</p>	<p>MILEPOST 332.00 - 346.00</p>	
	<p>HIGHWAY NAME <b>PRESCOTT - FLAGSTAFF HWY</b></p>		

YAVAPAI COUNTY



LEGEND

HIGHWAY	
MILEPOST	
STATIONING TICKS	
STRIP MAP	
SHEET MAP	

ARIZONA DEPARTMENT OF TRANSPORTATION  
INTERMODAL TRANSPORTATION DIVISION  
RIGHT OF WAY SECTION

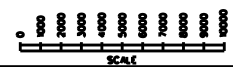
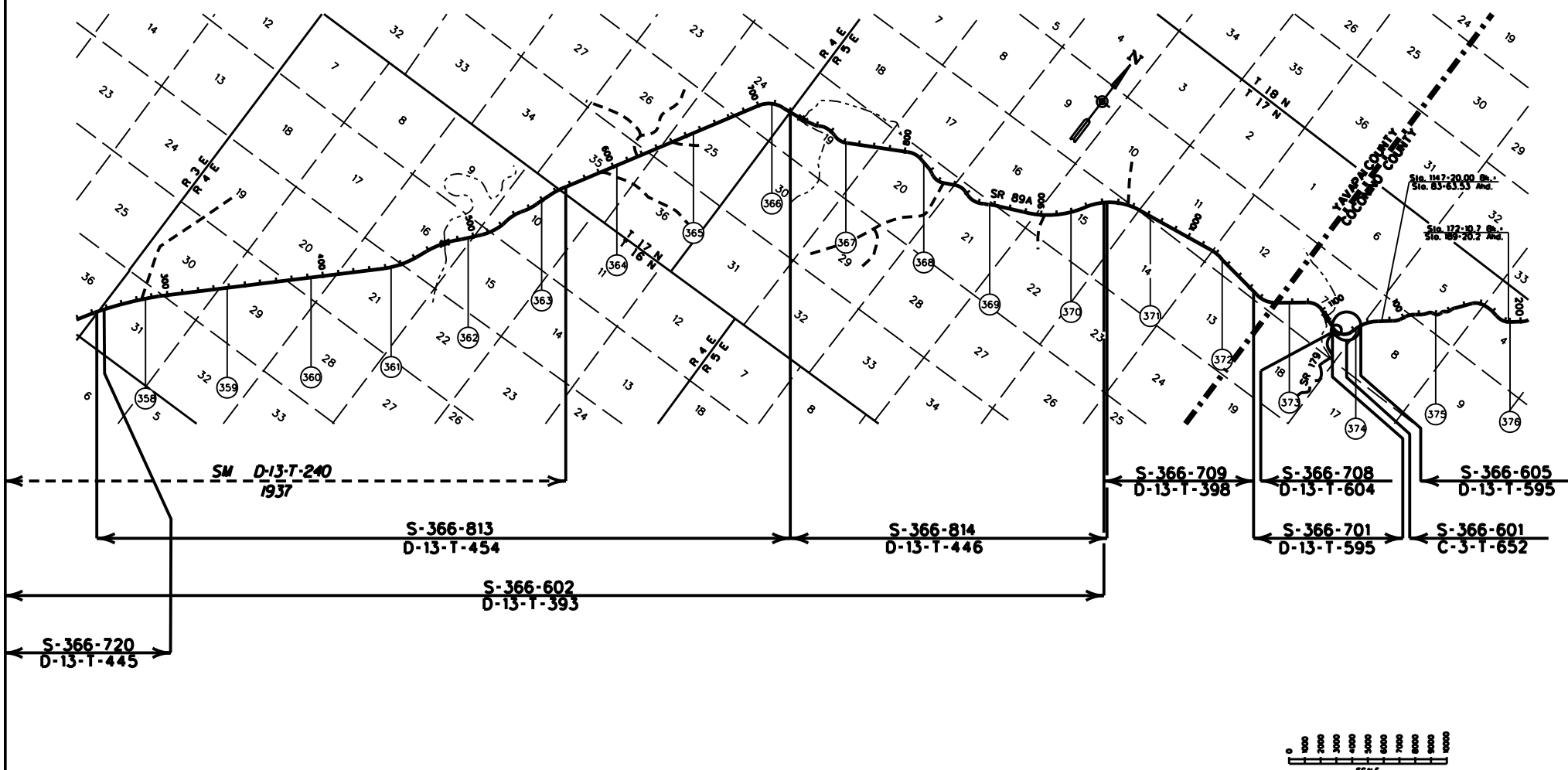
MILEPOST MAP

ROUTE SR 89A MILEPOST 347.00 - 357.00

HIGHWAY NAME  
PRESCOTT - FLAGSTAFF HWY

COPIES OF RIGHT OF WAY MAP SHEETS AND STRIP MAPS ARE AVAILABLE TO THE PUBLIC FROM: RIGHT OF WAY PLANS SECTION, MAIL DROP 612E, 205 SOUTH 17TH AVENUE, PHOENIX AZ 85007, TELEPHONE (602)712-7270.

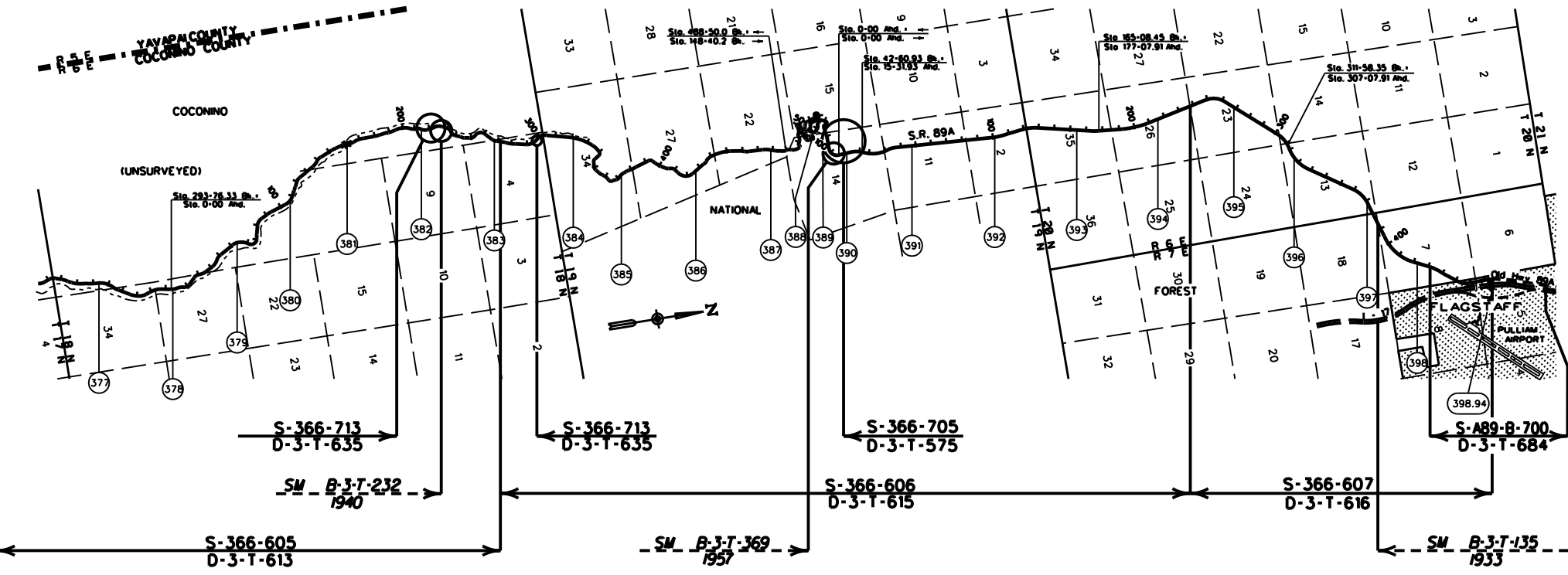
YAVAPAI COUNTY



COPIES OF RIGHT OF WAY MAP SHEETS AND STRIP MAPS ARE AVAILABLE TO THE PUBLIC FROM: RIGHT OF WAY PLANS SECTION, MAIL DROP 612E, 205 SOUTH 17TH AVENUE, PHOENIX AZ 85007, TELEPHONE (602)712-7270.

<b>LEGEND</b> HIGHWAY MILEPOST STATIONING TICKS STRIP MAP SHEET MAP		ARIZONA DEPARTMENT OF TRANSPORTATION INTERMODAL TRANSPORTATION DIVISION RIGHT OF WAY SECTION	
		<b>MILEPOST MAP</b> ROUTE SR 89A MILEPOST 368.00 - 376.00 HIGHWAY NAME <b>PRESCOTT - FLAGSTAFF HWY</b>	

COCONINO COUNTY



COPIES OF RIGHT OF WAY MAP SHEETS AND STRIP MAPS ARE AVAILABLE TO THE PUBLIC FROM: RIGHT OF WAY PLANS SECTION, MAIL DROP 612E, 205 SOUTH 17TH AVENUE, PHOENIX AZ 85007, TELEPHONE 16021712-7270.

**LEGEND**

- HIGHWAY
- MILEPOST
- STATIONING TICKS
- STRIP MAP
- SHEET MAP



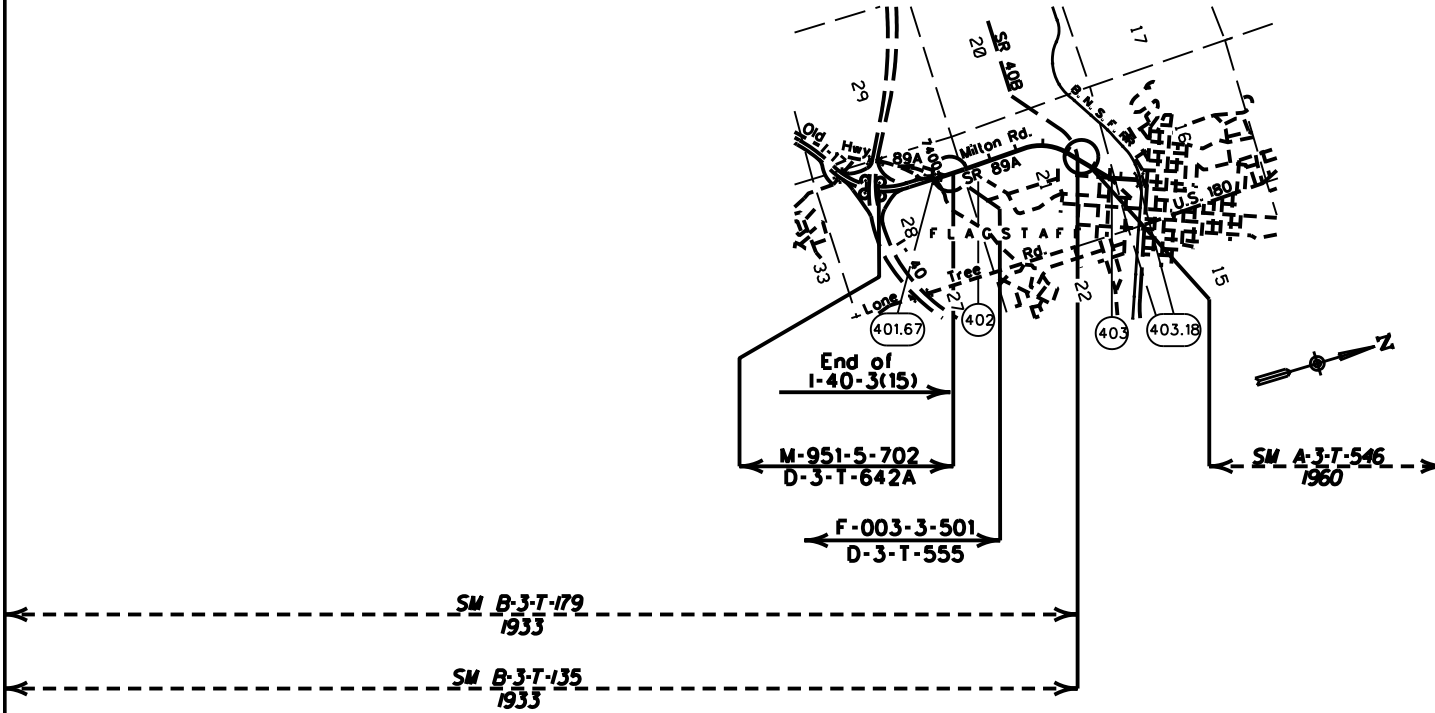
ARIZONA DEPARTMENT OF TRANSPORTATION  
INTERMODAL TRANSPORTATION DIVISION  
RIGHT OF WAY SECTION

**MILEPOST MAP**

ROUTE SR 89A MILEPOST 377.00 - 398.94

HIGHWAY NAME **PRESCOTT - FLAGSTAFF HWY**

COCONINO COUNTY



LEGEND

HIGHWAY	
MILEPOST	
STATIONING TICKS	
STRIP MAP	
SHEET MAP	

ARIZONA DEPARTMENT OF TRANSPORTATION INTERMODAL TRANSPORTATION DIVISION RIGHT OF WAY SECTION	
<b>MILEPOST MAP</b>	
ROUTE SR 89A	MILEPOST 401.67 - 403.18
<b>SOUTH MILTON ROAD</b>	

6

COPIES OF RIGHT OF WAY MAP SHEETS AND STRIP MAPS ARE AVAILABLE TO THE PUBLIC FROM: RIGHT OF WAY PLANS SECTION, MAIL DROP 612E, 205 SOUTH 17TH AVENUE, PHOENIX AZ 85007, TELEPHONE 16021712-7270.