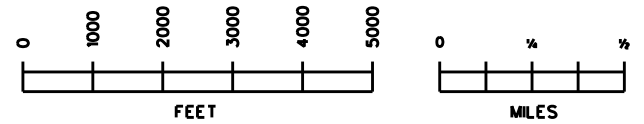
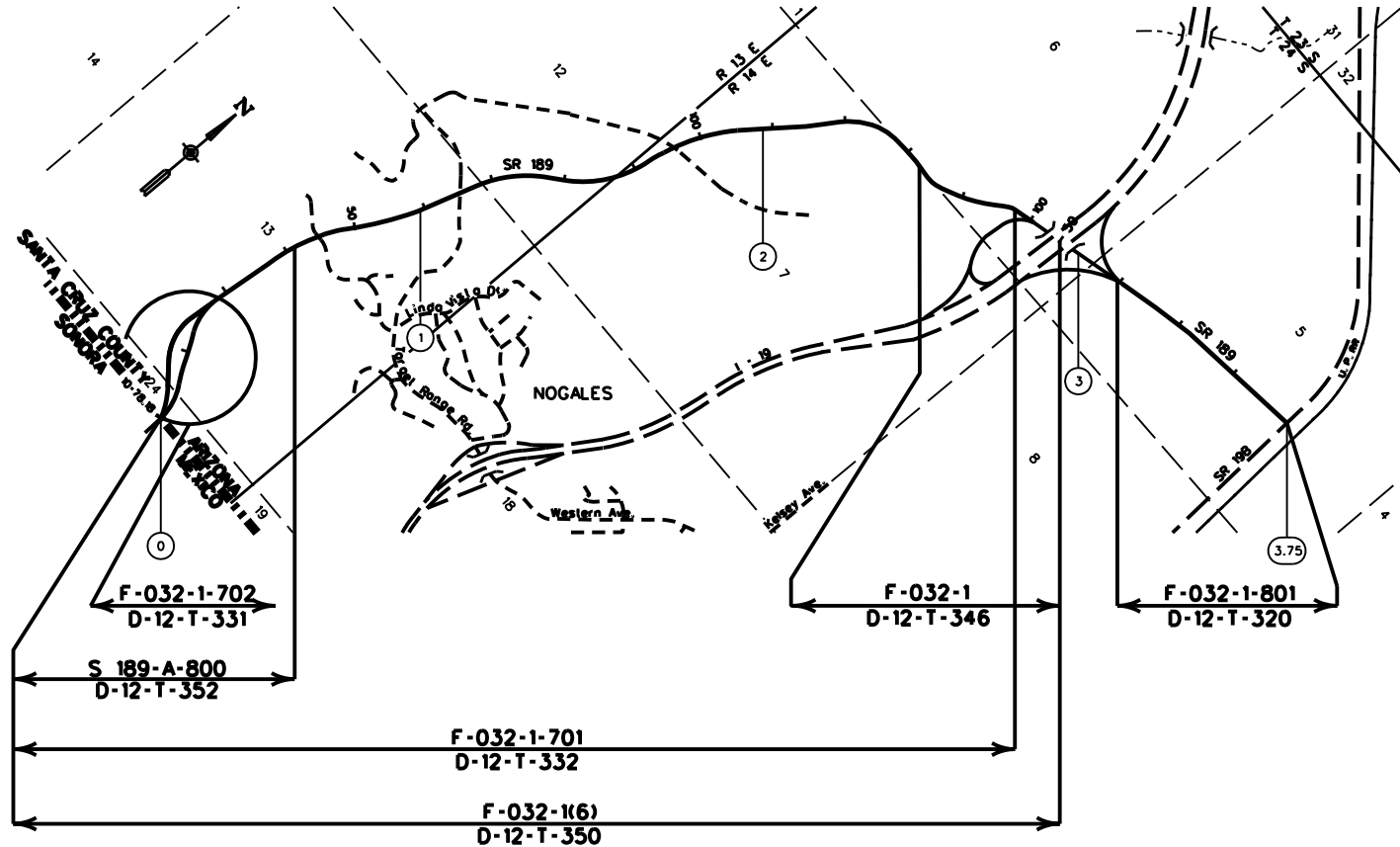


SANTA CRUZ COUNTY



COPIES OF RIGHT OF WAY MAP SHEETS AND STRIP MAPS ARE AVAILABLE TO THE PUBLIC FROM: RIGHT OF WAY PLANS SECTION, MAIL DROP 612E, 205 SOUTH 17TH AVENUE, PHOENIX AZ 85007, TELEPHONE (602)712-7270.

<p>LEGEND</p> <p>HIGHWAY</p> <p>MILEPOST</p> <p>STATIONING TICKS</p> <p>STRIP MAP</p> <p>SHEET MAP</p>	<p>ARIZONA DEPARTMENT OF TRANSPORTATION INTERMODAL TRANSPORTATION DIVISION RIGHT OF WAY SECTION</p>		<p>1</p>
	<p>MILEPOST MAP</p>		
	<p>ROUTE SR - 189</p>	<p>MILEPOST 0.00 - 3.75</p>	
<p>NOGALES PRIMARY CONNECTION</p>			