



Public Hearing

June 15, 2011



Interstate 19: San Xavier Road to I-10

Initial Design Concept Report and
Draft Environmental Assessment

ADOT Project No.: 019 PM 057 H510501L
Federal Aid No.: 019-A(014)





Welcome and Introductions

Linda Ritter

Senior Community Relations Officer, ADOT

- **Key project team members**

- Arizona Department of Transportation
- Federal Highway Administration



Hearing Purpose

- Present study information
- Receive public comments and questions
- Record hearing presentation, feedback, comments and questions through a court reporter



Agenda

- **ADOT Overview and Project History**
Project Manager - Robin Raine, P.E.
- **Project Overview, Proposed Design and Timeline**
Bill Schlesinger, P.E.
- **Environmental Overview**
Diane Simpson-Colebank, RLA

Agenda (cont.)

Question and Comment Session

- Questions and comments may be submitted in the following ways:
 - Fill out a yellow question card and give to a team member wearing a badge during the presentation
 - Questions will be read aloud during the question and comment session

QUESTION CARD
Interstate 19: San Xavier Road to Interstate 10
June 15, 2011 - Public Hearing
Please print clearly.
Return your card to a project team member before or during the presentation.
My question is regarding:
a. Construction b. Environmental c. Right of Way d. Public Outreach e. Other

ADOT

Agenda (cont.)

- Provide your comments directly to the Court Reporter after the presentation
- Fill out a comment form and return it by **June 30** in order for your comment to become an official part of the environmental document

INTERSTATE 19:
San Xavier Road to Interstate 10

Public Hearing
El Pueblo Senior Center
Wednesday, June 15, 2011, 5 to 7 p.m.

COMMENT FORM

Comments:

Optional

Name: Address: City: State: ZIP:

Phone: Fax: Email:

Public comments are an important part of the project and are welcome at any time for review and consideration. Comments returned by Thursday, June 30, 2011, will be included in the summary of this public hearing. Please send comments to ADOT, in care of Logan Simpson Design, Inc., 33 N. Stone Ave., Suite 1480, Tucson, AZ 85701; phone: 520-884-5500 ext. 15; fax: 520-620-0441; or email: florher@logansimpson.com.

www.azdot.gov/i19

ADOT Project No. 019 PM 057 HS105 01L
Federal Aid No. 019-A (01A)

ADOT

U.S. Department of Transportation
Federal Highway Administration



ADOT Tucson District Perspective

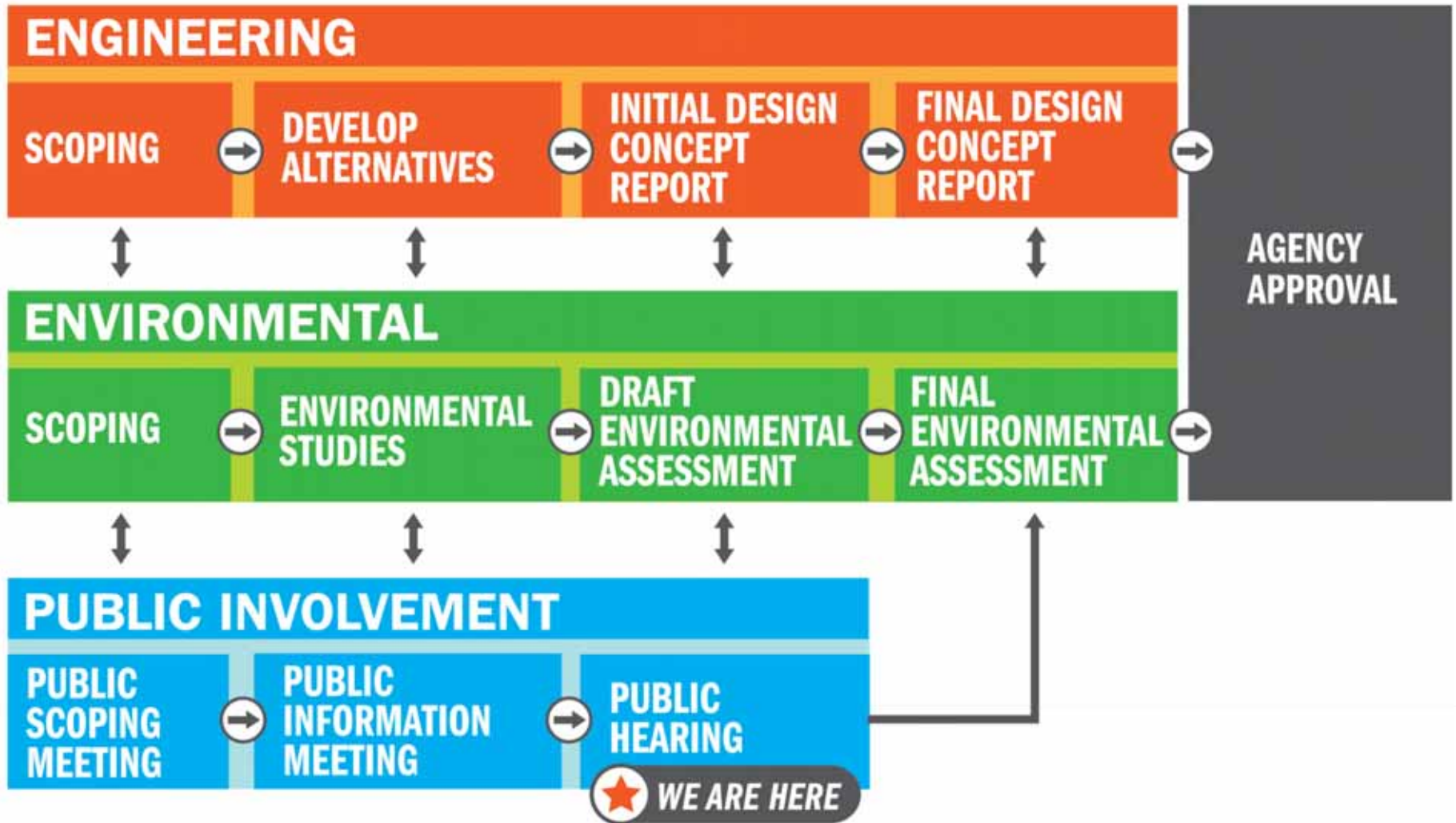
Robin Raine, P.E.

Project Manager, ADOT

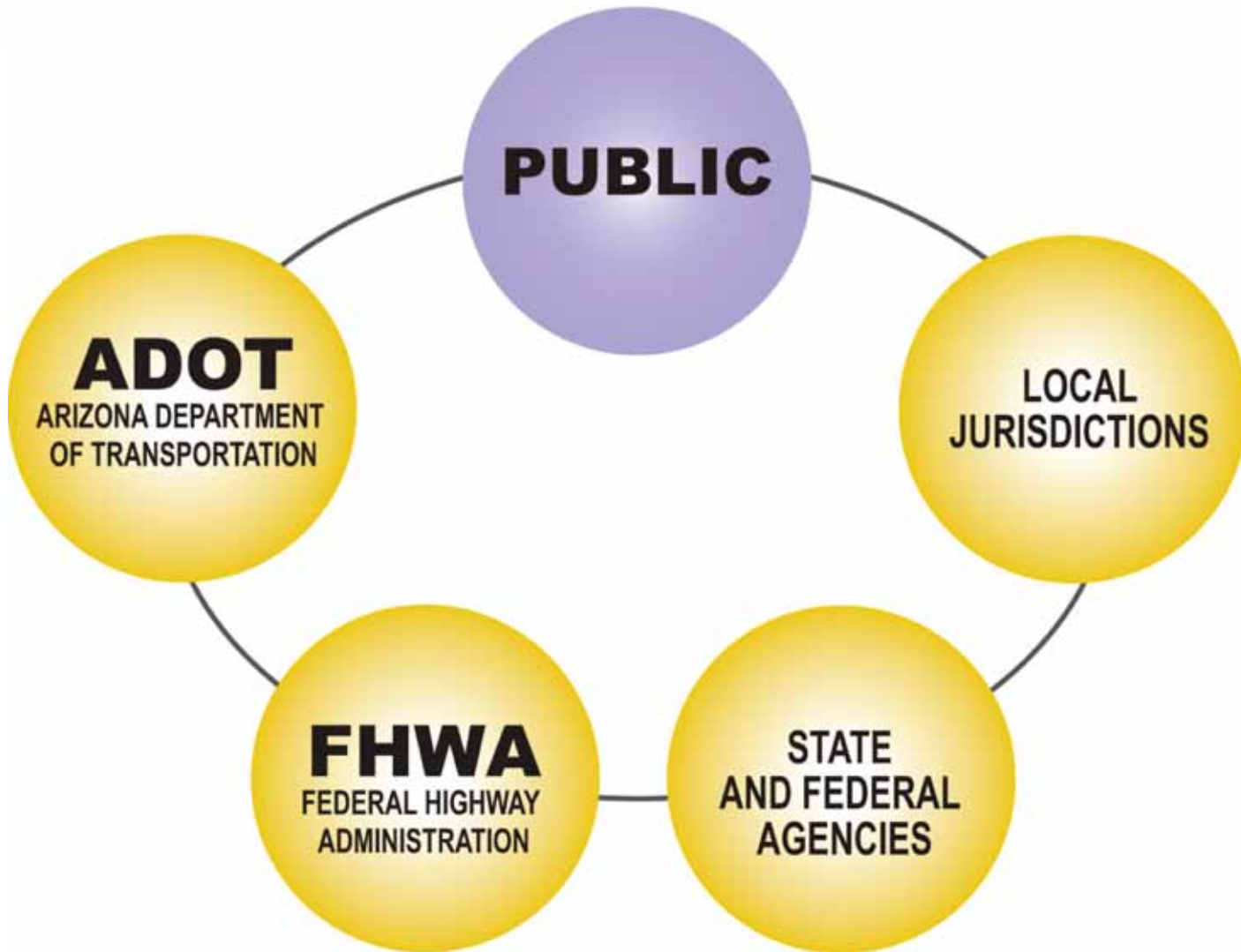
- **Study importance**
- **Study partners**
- **Study overview**



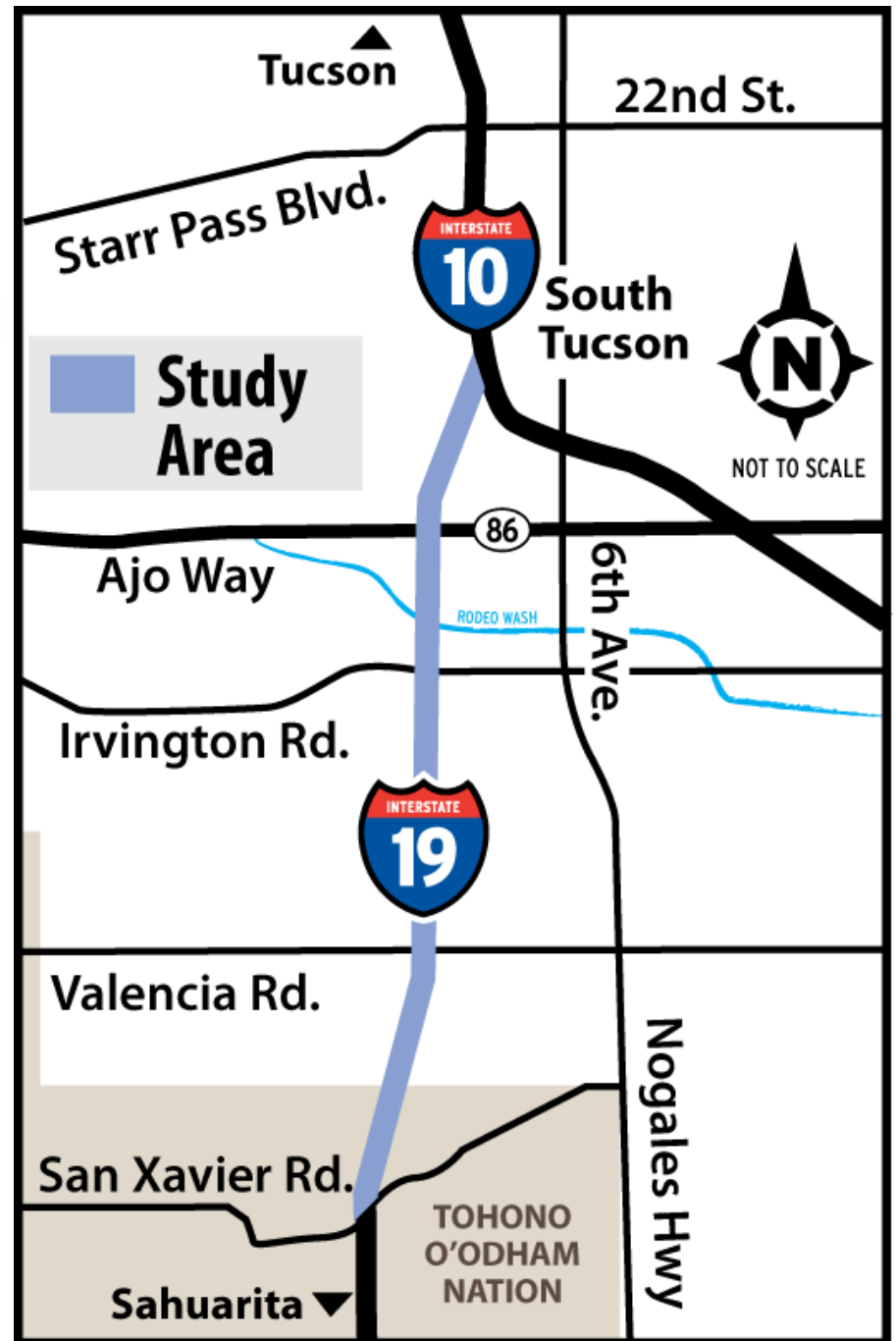
Study Process



Stakeholders



Study Area





Study Area History

- I-19: Constructed in the 1960s
- I-19 Corridor Study: I-10 to Pima/Santa Cruz County (completed in 2003)
- I-19 Project Assessment: San Xavier Road to Ajo Way (completed in 2003)
- I-10/I-19 Interchange: Construction (completed in 2004)



Study Purpose

Why is this study needed?

- Accommodate travel demand along the corridor
- Maintain I-19 as part of a congressionally designated high-priority corridor for international trade
- Meet the future access needs at traffic interchanges in the project area

Study Purpose (cont.)

- Provide roadway design that meets current engineering standards
- Improve pedestrian access across I-19
- Improve drainage



Initial Design Concept Report

- Evaluating the number of lanes and right-of-way needs
- Evaluating design and locations of interchanges
- Evaluating crossroad alignments





Draft Environmental Assessment

- Evaluating the potential social, economic, and environmental impacts of the project
- Documenting the mitigation measures required to implement the project



Study Overview

Bill Schlesinger, P.E.

Consultant Project Manager, AECOM



Proposed Improvements

- Additional travel lanes for a total of 4 lanes in each direction
- Construct new interchanges at Drexel Road and Los Reales Road
- Reconstruct interchanges at Ajo Way, Irvington Road and San Xavier Road



Proposed Improvements (cont.)

- Add/reconstruct ramps at the I-10/I-19 interchange
- Construct a new ADA-compliant pedestrian bridge between Irvington Road and Ajo Way

Proposed Implementation Plan

- Eight phases planned
- First phase tentatively to begin in late 2014
- Proposed project will take a total of 15-25 years
- Plan based on funding availability



Phase One

- Reconstruct the Ajo Way traffic interchange and the southbound I-19 exit ramp to Irvington Road



Phase Two

- Reconstruct the Irvington Road traffic interchange





Phase Three

- Reconstruct I-19 and add a third lane in each direction of I-19 between Valencia Road and I-10





Phase Four

- Reconstruct I-19 and add a third lane in each direction of I-19 between San Xavier Road and Valencia Road





Phase Five

- Construct the Drexel Road traffic interchange and the southbound I-19 exit ramp to Valencia Road
- If the Drexel Road bridge over the Santa Cruz River is completed, the order of this phase should be re-evaluated to determine if it should be constructed before Phase Four.



Phase Six

- Construct the outer fourth lane in each direction of I-19 and any auxiliary lanes between Valencia Road and I-10
- Also includes ramps between Ajo Way and I-19/I-10 traffic interchange



Phase Seven

- Construct the San Xavier Road traffic interchange and the Los Reales Road traffic interchange
- Also includes the collector distributor roads between San Xavier Road and Los Reales Road



Phase Eight

- Construct the outer fourth lane in each direction of I-19 and any auxiliary lanes between San Xavier Road and Valencia Road



Environmental Overview

Diane Simpson Colebank, RLA

Environmental Consultant, Logan Simpson Design



Draft Environmental Assessment

National Environmental Policy Act Environmental Process

- Evaluates the level of potential environmental impacts of a proposed action
- Provides an opportunity for the public and agencies to provide input and/or comments
- Assists in the decision-making process



Draft Environmental Assessment (cont.)

Types of Potential Environmental Impacts

- Human
- Cultural
- Natural
- Physical



Draft Environmental Assessment (cont.)

Human Environment

- Economics
 - Access to businesses would be maintained during construction
 - Long-term improvements to traffic flow
- Social impacts
 - Access to community services and schools would be maintained



Draft Environmental Assessment (cont.)

Human Environment (cont.)

- Neighborhood continuity
 - No anticipated long-term impacts
 - Replacement of pedestrian bridge near Michigan Street bridge



Draft Environmental Assessment (cont.)

Human Environment (cont.)

- Emergency services
 - Coordination with emergency services prior to construction phases
 - Some lane closures and detours during construction



Draft Environmental Assessment (cont.)

Human Environment (cont.)

- Relocations/displacements
 - No business closures or relocations
 - Potentially 82 full and 27 partial property acquisitions for roadway improvements and sound barriers along I-19



-  **Project Area**
-  **Potential Relocations**
-  **Proposed Right of Way**



Draft Environmental Assessment (cont.)

Human Environment (cont.)

- Access and traffic patterns
 - Traffic flow along I-19 maintained during construction
 - Some temporary lane closures and detours during construction
 - Eight phases of construction
 - Increased access points into community



Draft Environmental Assessment (cont.)

Cultural Environment

- Potential impacts to 13 sites
- Draft Memorandum of Agreement (MOA)



Draft Environmental Assessment (cont.)

Section 4(f) of the Transportation Act

- Refers to public recreation and park lands, historic properties, and wildlife refuges
 - Six properties within project area
 - One property potentially affected
 - ✧ Pima Community College and City of Tucson joint-use facility



Draft Environmental Assessment (cont.)

Natural Environment

- Vegetation
 - Vegetation within existing median would be removed
- Threatened and endangered species
 - No identified impacts



Draft Environmental Assessment (cont.)

Natural Environment (cont.)

- Visual resources
 - Landscape character would be maintained
 - Visual changes consistent with existing conditions

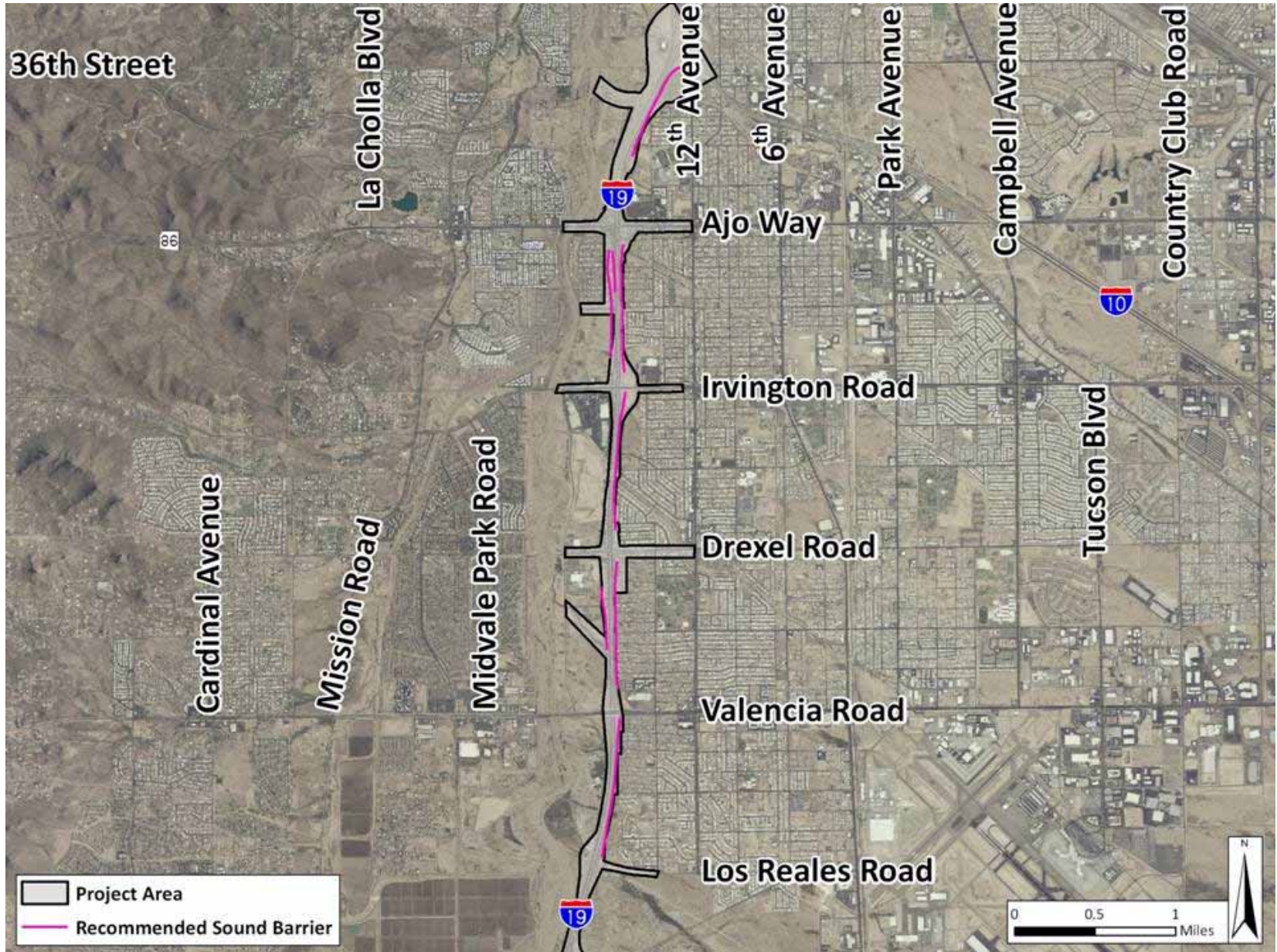


Draft Environmental Assessment (cont.)

Physical Environment

- Air quality
 - Minor impacts during construction
 - Long-term beneficial impacts
- Noise
 - Sound barriers proposed in 8 locations
 - ✧ approximately 12 to 20 feet high
 - ✧ final height and location to be determined

Recommended Sound Barrier





Draft Environmental Assessment (cont.)

Physical Environment (cont.)

- Floodplain/drainage
 - Potential impacts to 23 washes

Public Outreach & Participation

- Public meetings
- Small group meetings
- Continued public outreach
- Website
 - Subscribe to receive project updates





Formal Question and Comment Session

Your input is important to us!



Additional Questions and Comments

- Visit Court Reporter to provide your comments after the presentation
- Fill out a comment form and return by **June 30** for your comment to become an official part of the Environment Document



Contact Information

**Comments should be submitted after
this hearing to:**

ADOT in care of:

Theresa Fortner at Logan Simpson Design, Inc.

33 North Stone, Suite 1460

Tucson, AZ 85701

- **Email:** tfortner@logansimpson.com
- **Phone:** 520-884-5500 Ext. 15
- **Fax:** 520-620-0441



Thank you

**Please feel free to visit with
ADOT team members.**

Materials are available at the Valencia Library
and online at

www.azdot.gov/i19