

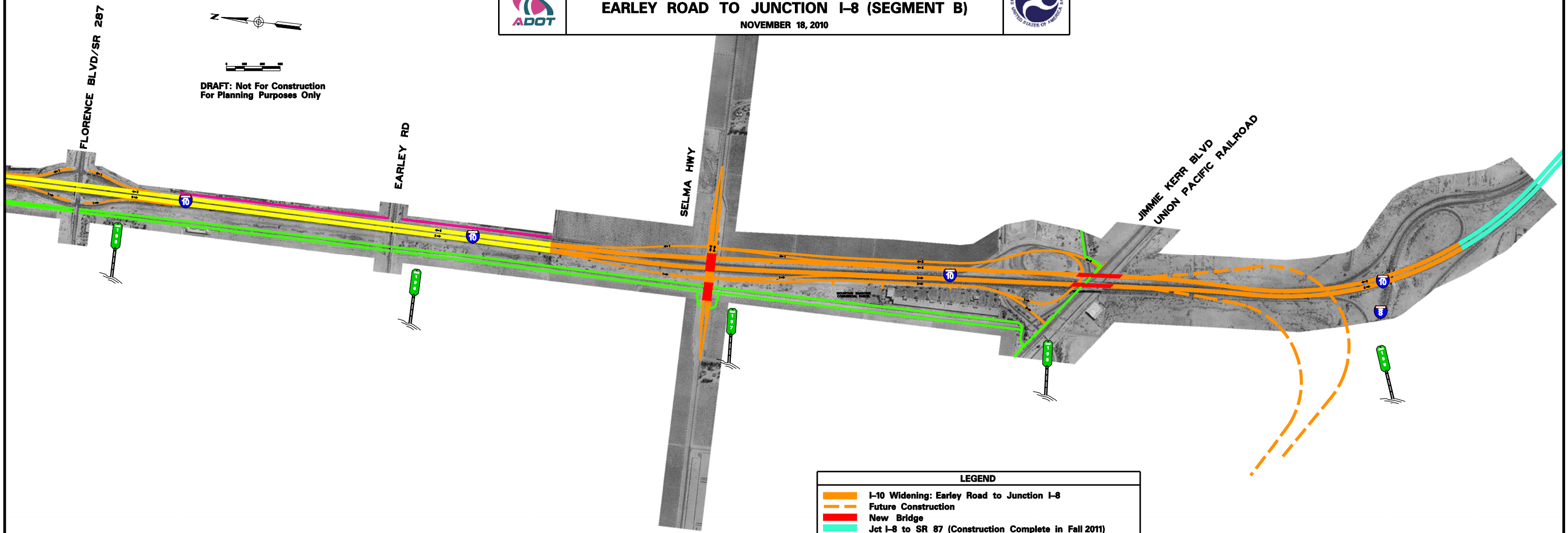


**INTERSTATE 10 WIDENING:  
EARLEY ROAD TO JUNCTION I-8 (SEGMENT B)**

NOVEMBER 18, 2010



DRAFT: Not For Construction  
For Planning Purposes Only



This Information May Be Accessed  
At Our Project Web Site:  
<http://www.i10tucsondistrict.com/vt0i8>

LEGEND	
	I-10 Widening: Earley Road to Junction I-8
	Future Construction
	New Bridge
	Jct I-8 to SR 87 (Construction Complete in Fall 2011)
	Val Vista to Earley Rd (Construction Nov 2010 to Nov 2012)
	City of Casa Grande Trail System
	Segment A Sound Wall Limits
	Number of Lanes & Direction Of Travel