



KINGMAN DISTRICT STAFF

- Mike Kondelis** District Engineer
- Chris Olson** Sr. Resident Engineer
- Ismail Attallah** Resident Engineer
- Kara Lavertue** Project Development
- Luke Brazdys** Maintenance Engineer
- Rance Spurlock** Maintenance Superintendent
- Julie Alpert** Environmental Coordinator
- Anthony Martinez** Permits Supervisor
- Michele Beggs** Community Relations

District Office
 3660 E. Andy Devine Avenue | Kingman, AZ 86401
 Phone: 928.681.6010 Fax: 928.757.1269

Construction Office
 3664 E. Andy Devine Avenue | Kingman, AZ 86401
 Phone: 928.681.6030 Fax: 928.757.3827

Kingman District Construction and Project Information:
<http://azdot.gov/Highways/Districts/Kingman/index.asp>

ADOT Natural Resources Hotline: 1.888.822.2604
 Information about burning & chemical spraying

AZ 5-1-1
 Updates Arizona's Road Conditions Every 5 Minutes
www.az511.com Click on 'Closures'
 Or Call: 1.888.411.ROAD (7623)

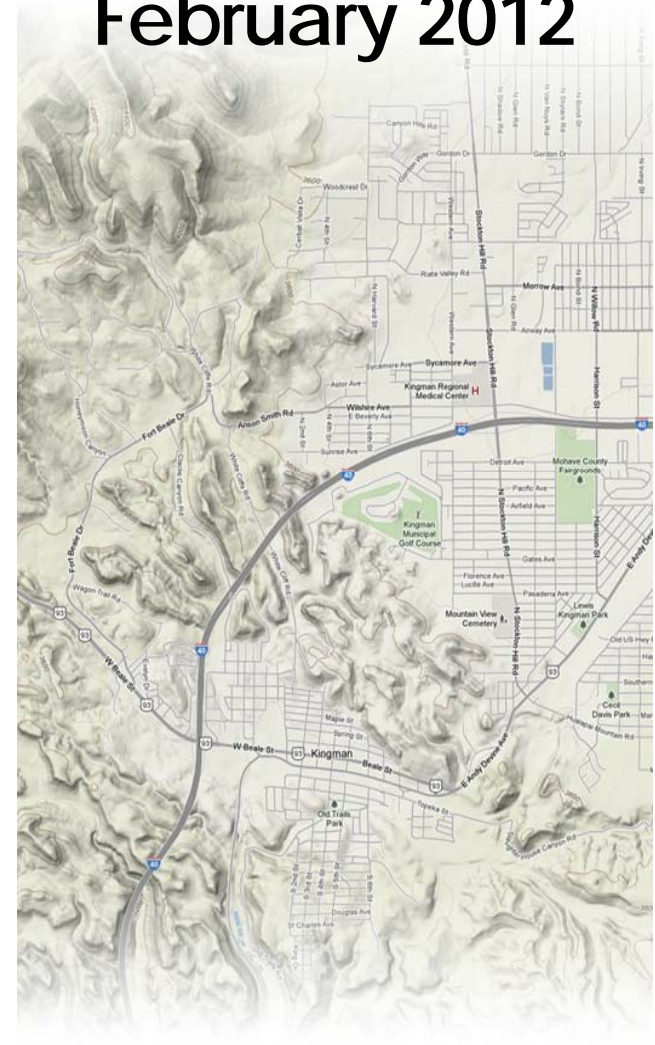


KINGMAN DISTRICT

CONSTRUCTION PROJECTS

**Providing Safe, Quality Roadways
 for Northwestern Arizona**

February 2012



Kingman District Construction and Project Information:
<http://azdot.gov/Highways/Districts/Kingman/index.asp>

MAINTENANCE ORG BOUNDARIES

KINGMAN MAINTENANCE George Webb 928.681.6029	
I-40	MP 44.0—MP 72.6
US 93	MP 0.0—MP 71.1
SR 68	MP 0.0—MP 27.2
Historical Route 66	In the City of Kingman
Route 66	MP 56.7—MP 123.2
SELIGMAN MAINTENANCE Curtiss West 928.422.3482	
I-40	MP 72.6—MP 146.0
SR 89	MP 345.7—MP 363.8
SR 68	MP 0.0—MP 27.2
Historical Route 66	Seligman & Ash Fork
NEEDLE MOUNTAIN MAINTENANCE Jeff Baumeister 928.768.4355	
I-40	MP 0.0—MP 44.0
SR 95	MP 161.7—MP 202.0
SR 95	MP 226.2—MP 250.0
WIKIEUP MAINTENANCE Randy Morris 928.765.2312	
US 93	MP 91.2—MP 182.9
SR 96	MP 0.0—MP 22.0
SR 97	MP 155.3—MP 167.0

CURRENT CONSTRUCTION PROJECTS

US 93 MP 68.3—71.3	Grandview to Ranch
Type of Project:	Pavement Preservation
Contractor:	McCormick Construction
Status:	Winter Shutdown
Construction Contact:	Lee Robertson 602.206.4231

US 93 MP 104.1—106.2 (NB), MP 115.96—119.0, MP 124.1—132.98	Kabba Wash
Type of Project:	Pavement Preservation
Contractor:	FNF Construction
Status:	Winter Shutdown
Construction Contact:	Lee Robertson 602.206.4231

US 93 MP 109—113 US 93 MP 113—116	SB Wagon Bow SB Deluge Wash
Type of Project:	Constr. New SB lanes, NB Bridges
Contractor:	FNF Construction
Status:	Construction Ongoing
Construction Contact:	Lee Robertson 602.206.4231

SR 66 MP 61.9—81.0	Mohave Airport Dr., Hackberry
Type of Project:	Pavement Preservation Double Chip Seal
Contractor:	Intermountain Slurry Seal, Inc.
Status:	Postponed until Spring
Construction Contact:	Chris Olson 928.681.6016

PROJECTS PENDING AWARD

PROJECT	AWARD DATE
SR 95 MP 236.4 Joy Lane Drainage Improvements Apparent Low Bidder:	February 17, 2012 Combs Construction

FISCAL YEAR 2012

PROJECT	ADVERTISE DATE
I-40 MP 21.1 (EB) Flat Top Wash Bridge Deck Rehabilitation	5/2012
I-40 MP 66.5 Blake Ranch Road PCCP	FY12
SR 66 MP 57.2—61.8 Airway Ave to Airport Drive Pavement Preservation	4/2012
SR 68 MP 8 & 26 Drainage Improvements	FY12
SR 95 MP 244.3—244.9, MP 247.9—248.3 Bullhead City Lighting Highway Lighting & H.A.W.K.	6/2012

FISCAL YEAR 2013

PROJECT	ADVERTISE DATE
I-40 MP 132.1—144.4 (WB) Weigh Station to Ash Fork Pavement Preservation	FY 13
I-40 MP 53.5 East Kingman T.I. and RR Bridges Bridge Rehabilitation	8/2012

FISCAL YEAR 2014

PROJECT	ADVERTISE DATE
I-40 MP 57.0—71.5 Rattlesnake Wash—Jct US 93 Pavement Preservation	FY 14

FISCAL YEAR 2015

PROJECT	ADVERTISE DATE
I-40 MP 101.8 —104.1 Antelope Wash Construct 4-Lane Divided Highway	FY 15



US 93 Wagon Bow & Deluge Wash