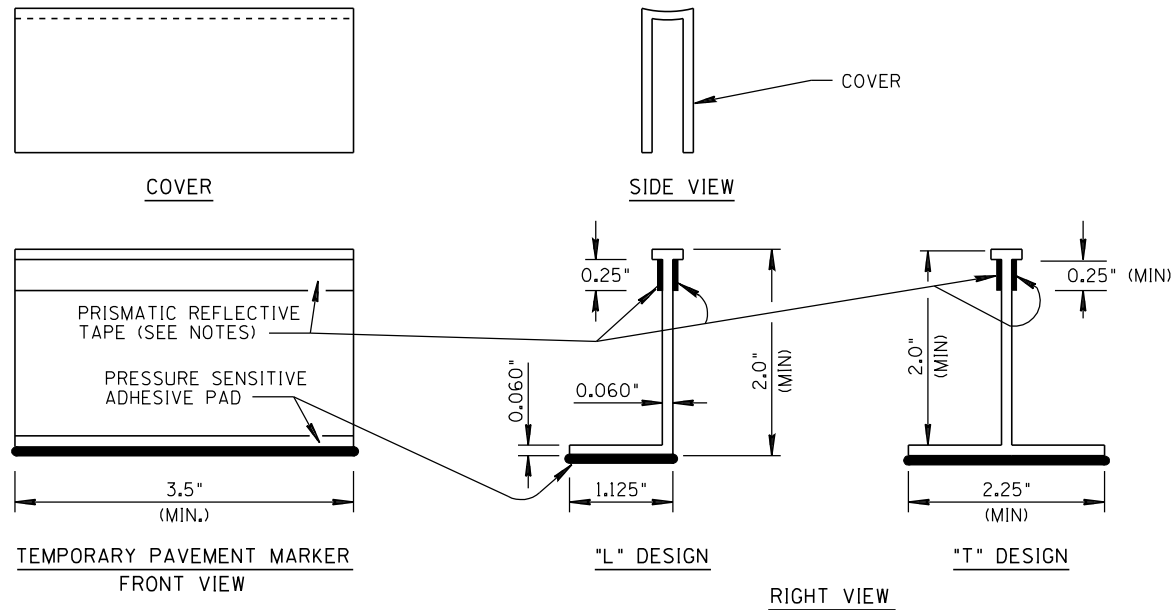


NO	DESCRIPTION OF REVISIONS	MADE BY	DATE
1	RE-ISSUE	L. LOPEZ	2/02
2			
3			
4			



TEMPORARY PAVEMENT MARKER AND COVER DETAIL

INSTALLATION INSTRUCTIONS:

1. FOR TWO LANE AND FOUR LANE ROADWAYS, THE TEMPORARY PAVEMENT MARKER WITH CLEAR PLASTIC SHALL BE PLACED ON EXISTING STRIPING PRIOR TO ANY WORK BEING DONE ON THE PAVEMENT. NORMALLY THREE LANE OR FIVE LANE ROADWAYS SHALL BE TEMPORARILY MARKED AS TWO LANE OR FOUR LANE DURING CONSTRUCTION.
2. TEMPORARY PAVEMENT MARKERS SHALL BE PLACED WITH REFLECTIVE SIDE FACING ON COMING TRAFFIC.
3. AFTER THE ASPHALT AND CHIPS ARE APPLIED TO THE PAVEMENT, REMOVE THE OUTERMOST PLASTIC COVER TO EXPOSE THE REFLECTIVE TAPE.
4. SPACING BETWEEN DOUBLE MARKERS WILL VARY IN ACCORDANCE WITH THE PAVEMENT MARKING PLANS.
5. IF THE PAVEMENT SURFACE IS SLIGHTLY MOIST OR THE SURFACE TEMPERATURE IS BELOW 60° F OR THE PHYSICAL CONDITION OF THE PAVEMENT IS QUESTIONABLE, A SPRAY ADHESIVE PRIMER SHALL BE APPLIED TO THE PAVEMENT SURFACE PRIOR TO THE APPLICATION OF THE MARKERS. THE SPRAY PRIMER SHALL BE PER THE TYPE RECOMMENDED BY THE MANUFACTURER OF THE MARKER.

MARKER TYPES SHALL BE AS FOLLOWS:

1. YELLOW MARKERS SHALL HAVE YELLOW BODIES AND YELLOW REFLECTIVE TAPE.
2. WHITE MARKERS SHALL HAVE WHITE BODIES AND WHITE REFLECTIVE TAPE.
3. ONE-WAY OR TWO-WAY REFLECTIVE MARKERS SHALL BE USED AS NECESSARY PER APPLICATION.
4. THE CLEAR PLASTIC COVER MAY VARY FROM ONE MANUFACTURER TO ANOTHER. THE CONFIGURATION AND DIMENSIONS OF THE COVER SHALL BE SUFFICIENT TO PROTECT THE REFLECTIVE FACE FROM APPLIED OILS AND PAVEMENTS. SOME APPLICATIONS WILL REQUIRE A DOUBLE COVER.

SHEET 2 OF 2  
NOT TO SCALE

DESIGN APPROVED	ARIZONA DEPARTMENT OF TRANSPORTATION INTERMODAL TRANSPORTATION DIVISION STANDARD DRAWINGS	REV.
<b>SIGNATURE ON FILE</b>		2/02
APPROVED FOR DESIGN	CHIP SEAL MARKER USAGE FOR TEMPORARY MARKINGS	DRAWING NO. M-20