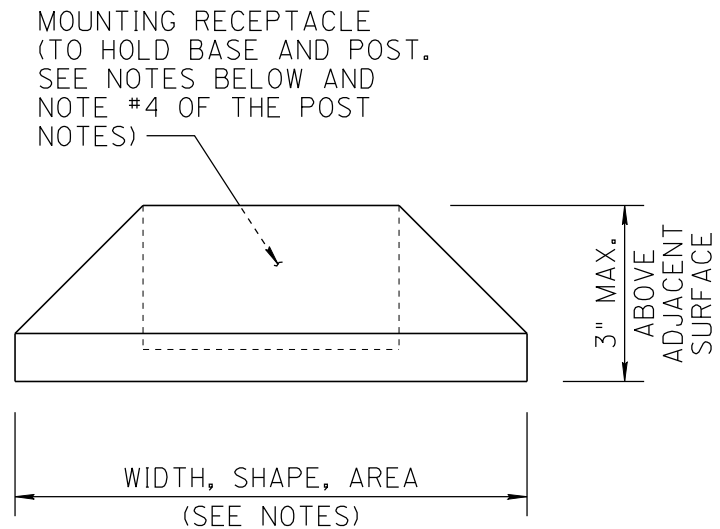
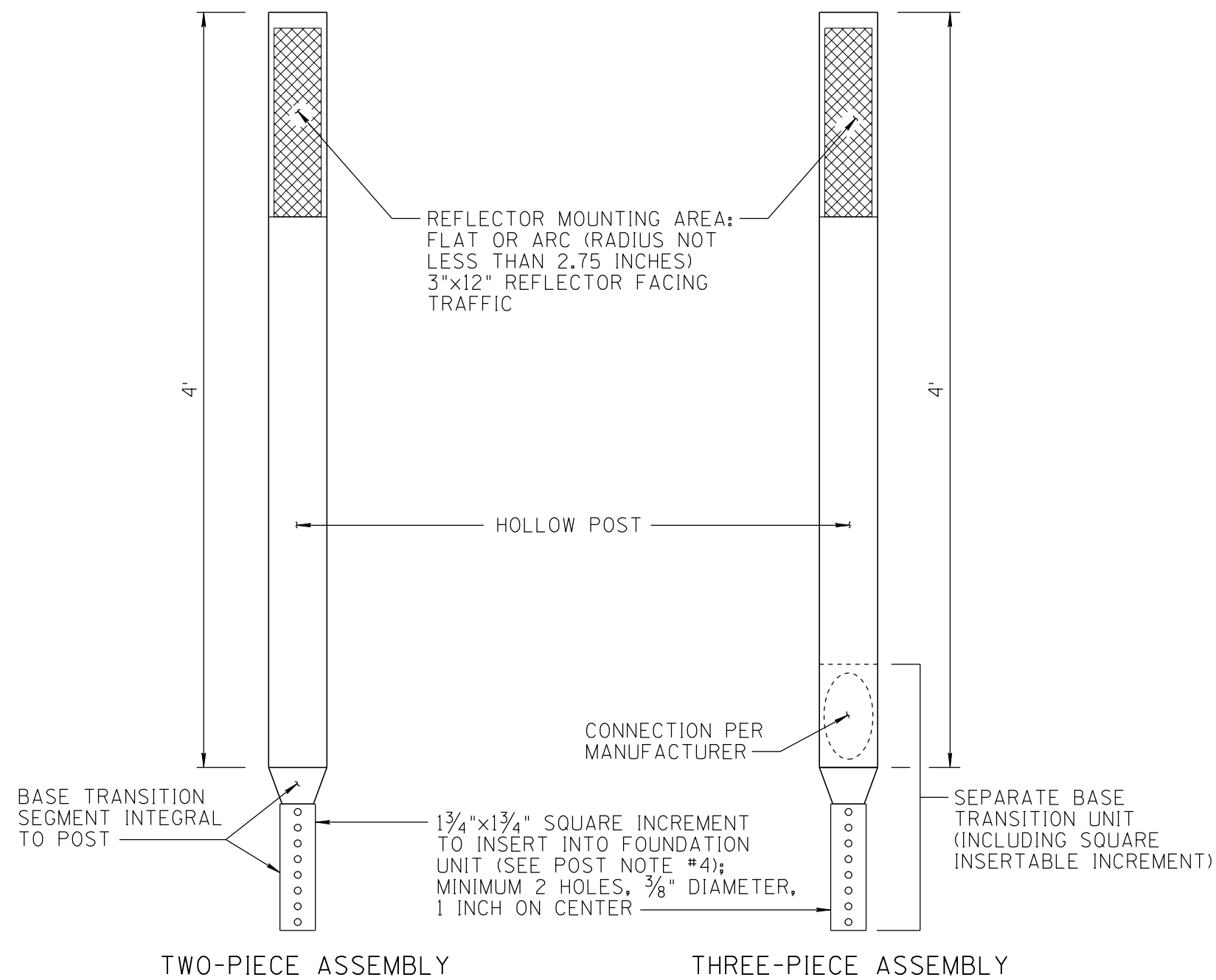


NO	DESCRIPTION OF REVISIONS	DATE	MADE BY
1	ORIGINAL ISSUE		
2	REMOVED PROPRIETARY LANGUAGE FROM NOTES AND CALL OUTS.		
NO	DESCRIPTION OF REVISIONS	DATE	MADE BY
3	EDIT CALL OUTS. ADDED 4 FT. DIMENSION TO DELINEATOR LENGTH	7/09	L. LOPEZ
4		1/10	L. LOPEZ
DATE	MADE BY		
8/11	L. LOPEZ		



**SURFACE-MOUNTED FOUNDATION UNIT**

(HOLDS BASE SEGMENT OF 2-PIECE OR BASE UNIT OF 3-PIECE ASSEMBLY)

**NOTES:**

1. RECEPTACLE SHAPE SHALL BE SQUARE UNLESS MATCHED BY MANUFACTURER TO TUBULAR POST.
2. FOUNDATION UNIT SHAPE MAY BE SQUARE, RECTANGULAR OR ROUNDED.
3. FOUNDATION UNIT MATERIAL SHALL BE COMPATIBLE WITH ADHERING OR FASTENING TO ALL FORMS OF ASPHALTIC AND PORTLAND CEMENTITIOUS SURFACE MATERIAL USED BY ADOT. SURFACE MOUNTED FOUNDATION UNITS SHOULD BE PLACED ONLY ON SOUND PAVEMENT ON THE ROADWAY PLANE AND BOLTED OR CEMENTED IN PLACE.
4. ALL REQUIRED EPOXY ADHESIVES OR FASTENERS SHALL BE INCLUDED.
5. FOUNDATION UNIT MAXIMUM DIMENSION SHALL NOT EXCEED 15 INCHES.
6. FOUNDATION UNIT SHALL BE LARGER THAN OR EQUAL TO 40 SQUARE INCHES AND LESS THAN OR EQUAL TO 115 SQUARE INCHES.
7. FOUNDATION UNIT LARGEST DIMENSION SHALL NOT BE GREATER THAN DOUBLE THE LEAST DIMENSION.
8. TWO-PIECE ASSEMBLY: FLEXIBLE DELINEATOR POST WITH INTEGRAL BASE TRANSITION SEGMENT, PLUS FOUNDATION UNIT.
9. THREE-PIECE ASSEMBLY: FLEXIBLE DELINEATOR POST, PLUS SEPARATE BASE TRANSITION UNIT, PLUS FOUNDATION UNIT.

**POST NOTES:**

(APPLICABLE TO ALL UNITS)

1. MINIMUM SIDEWALL THICKNESS SHALL BE 1/8 INCH.
2. SURFACE COLOR IS WHITE OR YELLOW AS SPECIFIED ON STD DRAWING M-26.
3. MUST MEET WARRANTY, UV-DURABILITY, STRIKE-DURABILITY AND ALL OTHER SPECIFIED REQUIREMENTS.
4. WHERE SURFACE MOUNTING IS REQUIRED, INSERTABLE BASE AND SURFACE-MOUNTED FOUNDATION UNIT MAY USE A "MATING" (RECEPTACLE) SHAPE.
5. UPPER END OF BASE TRANSITION UNITS SHALL FIT THE POST CONTOUR SUFFICIENTLY TO ATTACH FIRMLY TO THE POST USING BOLTS, PINS OR RIVETS.
6. LOWER END OF BASE TRANSITION SEGMENTS AND BASE TRANSITION UNITS SHALL BE SHAPED AND SIZED TO SNUGGLY FIT THE FOUNDATION UNIT. IT SHALL BE PERFORATED TO ATTACH FIRMLY TO THE FOUNDATION UNIT USING BOLTS OR PINS (SEE STD DRAWING M-37).

**FLEXIBLE DELINEATOR POSTS AND BASES**

FOUNDATION UNIT (NOT SHOWN)  
SEE STD DRAWING M-37

DESIGN APPROVED	ARIZONA DEPARTMENT OF TRANSPORTATION INTERMODAL TRANSPORTATION DIVISION TRAFFIC SIGNING & MARKING STANDARD DRAWINGS	REVISION 8/11
<b>SIGNATURES</b>		DRAWING NO. M-36
APPROVED FOR DISTRIBUTION	<b>ON FILE</b>	SHEET NO. 1 OF 1
	FLEXIBLE DELINEATOR ASSEMBLIES	

NOT TO SCALE