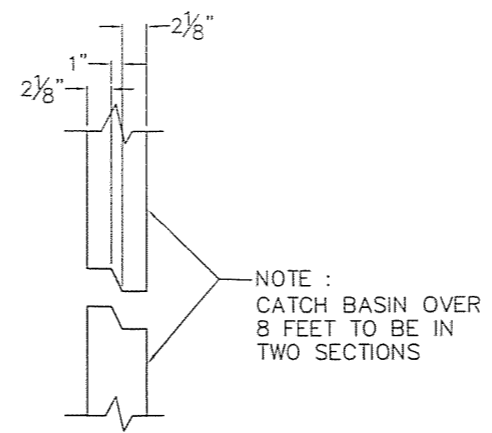
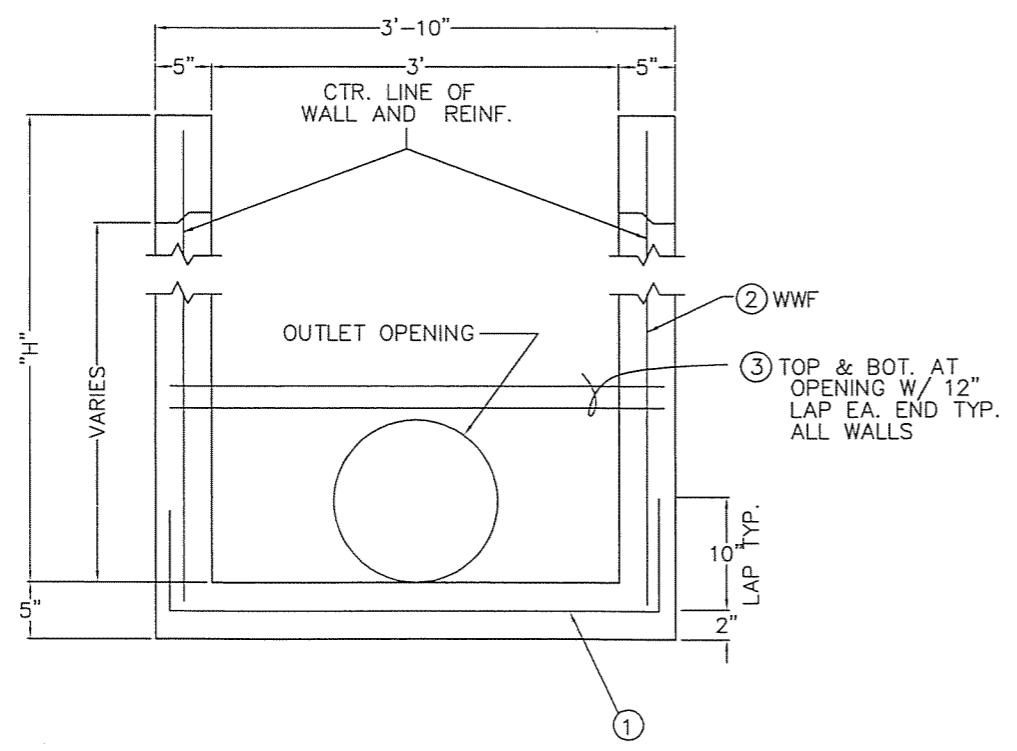


PLAN VIEW

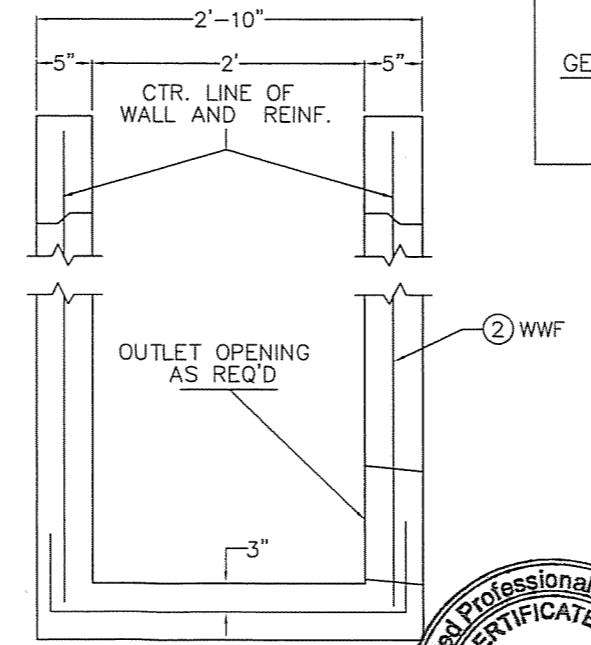


JOINT DETAIL

NOTE :
CATCH BASIN OVER
8 FEET TO BE IN
TWO SECTIONS



SECTION A-A



SECTION B-B

Registered Professional Engineer (Civil)
CERTIFICATE NO. 8081
DAVID M. NIESE
 Date Signed 12/29/08
 ARIZONA, U.S.A.
David M. Niese
 Exp. 9/30/2009

DESIGN CRITERIA:

LIVE LOAD: H-20 TRUCK LOADING (CONC. PRODUCT ONLY)

EQUIVALENT LATERAL EARTH PRESSURE: 30 P.C.F. (DRY)
36 P.C.F. (SATURATED)

DEPTH: (GROUND SURFACE TO TOP OF MANHOLE) AT GRADE

MINIMUM SOIL BEARING CAPACITY: 2200 P.S.F. AT 10'
2500 P.S.F. AT 15'
3000 P.S.F. AT 20'
4000 P.S.F. AT 25'
4500 P.S.F. AT 30'
5000 P.S.F. AT 35'

DESIGN SPECS:

CONCRETE COMPRESSIVE STRENGTH SHALL BE BASED ON 28 DAY TEST AGE AND SHALL REACH F_c OF 6,000 P.S.I.

REINFORCING STEEL GRADE 40 ADOT STD. SPEC 1003

REINFORCING WELDED WIRE FABRIC ASTM A185 65,000 P.S.I.

STRUCTURAL STEEL ASTM A-36

DESIGN CODES:

AMERICAN CONCRETE INSTITUTE (ACI) 318-95

ASTM C890-91 MINIMUM STRUCTURAL DESIGN LOADING FOR MONOLITHIC OR SECTIONAL PRECAST CONCRETE WATER AND WASTEWATER STRUCTURES.

AMERICAN ASSOCIATION OF STATE HIGHWAY AND TRANSPORTATION OFFICIALS (AASHTO) HB-17TH EDITION

GENERAL NOTES:

ALL JOINTS BETWEEN CONCRETE UNITS SHALL BE SEALED WITH A HIGH QUALITY SEALANT TO ASSURE WATERTIGHT INTEGRITY.

HEIGHT "H"	W W F, 4 X 4		OPNG. REINF.
	①	②	③
0 - 14'	W2.9 X W2.9	W2.9 X W2.9	1-#3
14' - 24'	W4 X W4	W4 X W4	2-#3
24' - 36'	W4 X W4	W2.9 X W2.9 AND W4 X W4	2-#4

CUSTOMER	2410 W. Broadway Phoenix, Arizona 85041 Phone: 602.268-0228 Fax: 602.243-5950	
JOB NAME	ARIZONA DOT CATCH BASIN C-15.80	
DWG. NO.	2X3CB	DATE: 12-19-08
DRAWN BY:	R. RIVERA	CAT. DWG NO.
SCALE:	N.T.S.	SHEET 1 OF 1