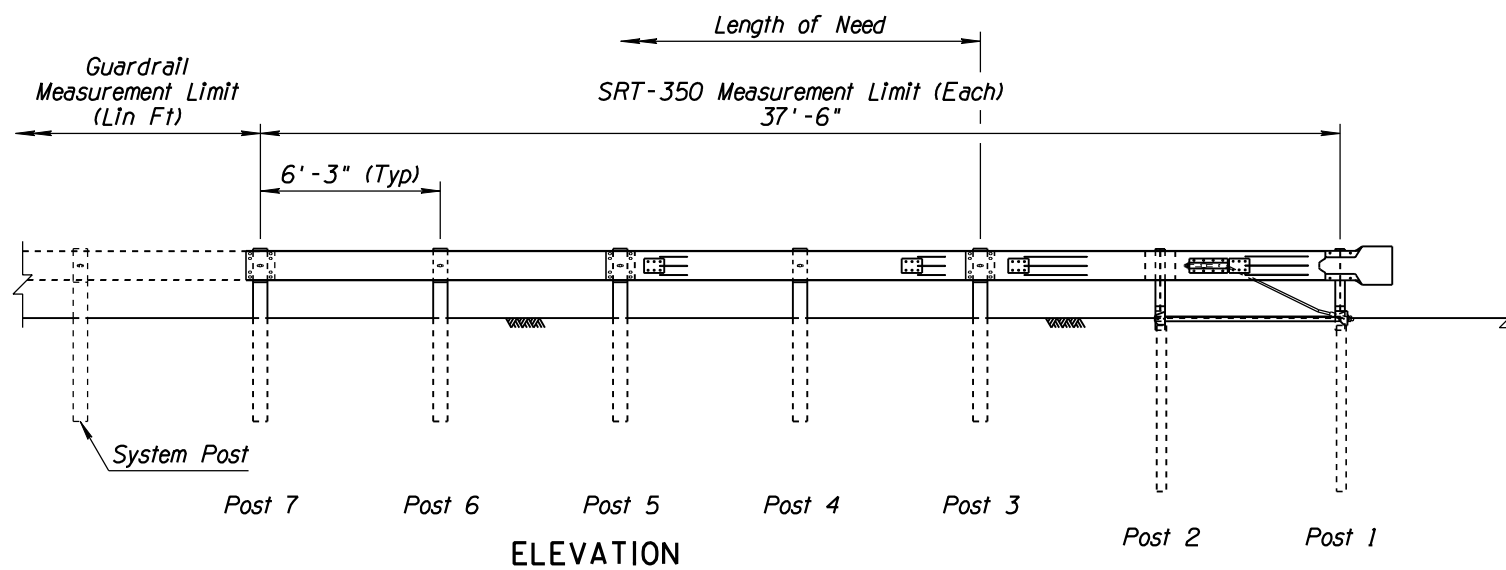
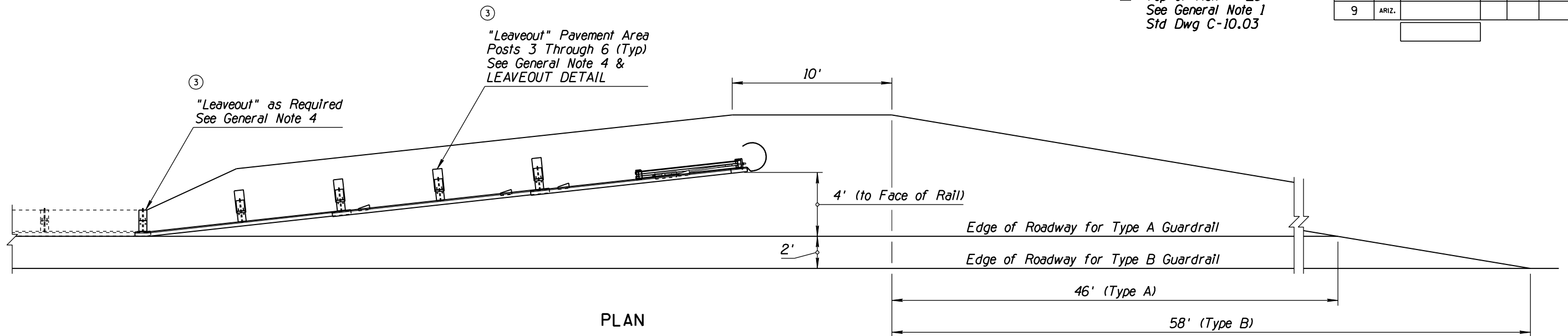


Date: 5/16/11

▲ Top of Rail = 28"  
See General Note 1  
Std Dwg C-10.03

F.H.W.A. REGION	STATE	PROJECT NO.	SHEET NO.	TOTAL SHEETS	AS BUILT
9	ARIZ.				

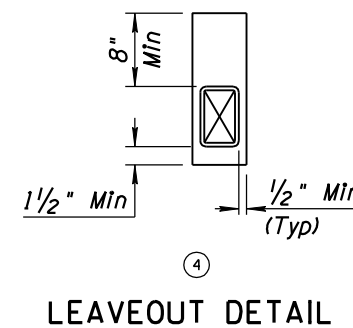
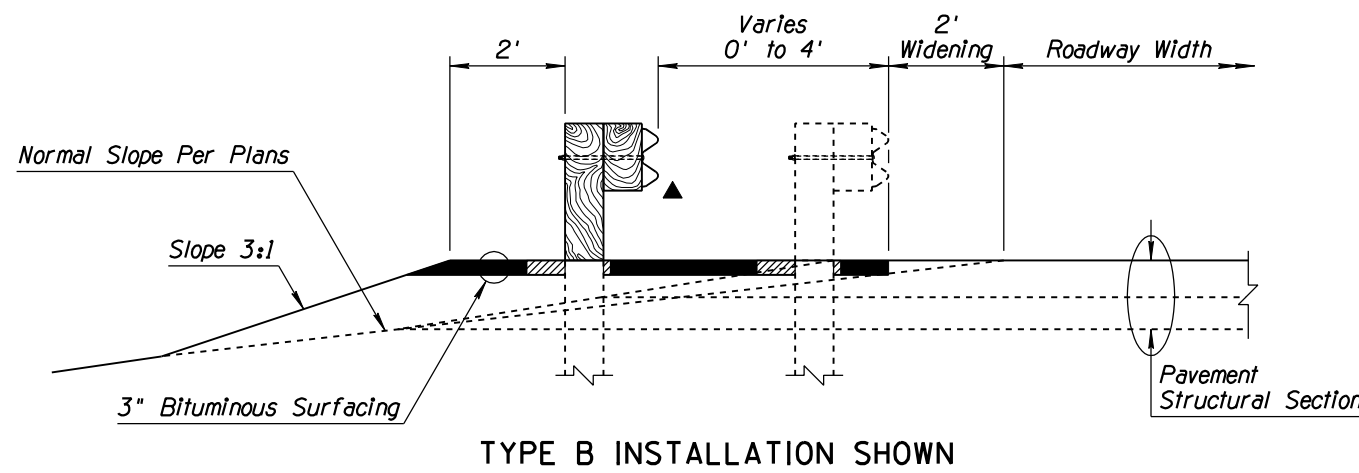
Note to Designer:  
 The information presented in this Roadway Plans Detail is for general use.  
 Designers should satisfy themselves that their project site conditions are  
 appropriate for use of this drawing. Contents within the inner border shall  
 not be altered, except for the addition of the Detail designation.



Traffic ←

**GENERAL NOTES**

1. This detail is for roadway layout only.
2. The SRT-350 shall be installed in accordance with the manufacturer's specifications and current approved drawings including all details, hardware, hardware quantities, and other information.  
  
The current manufacturer's approved drawing is number SS-355, 05/16/11. Visit the Roadway Design web site to view and print the drawing.
3. See specifications and Traffic Signing and Marking Standard Drawings.
4. "Leaveouts" in asphaltic concrete or PCC surface shall be provided around the guardrail posts at the locations and dimensions specified on the manufacturer approved drawings. "Leaveout" material shall consist of a 1-sack grout mix or other non-cohesive material as approved by the engineer.  
  
If the SRT-350 is installed in concrete, leaveouts shall be provided as shown for the depth of the concrete.



**DETAIL**  
 LAYOUT FOR SRT-350  
 HBA POSTS  
 (AC PAVEMENT APPLICATION SHOWN)

DESIGN APPROVED J.C. Cooper		ARIZONA DEPARTMENT OF TRANSPORTATION INTERMODAL TRANSPORTATION DIVISION ROADWAY GROUP PLANS DETAIL	
APPROVED FOR DISTRIBUTION Mary Viparina			
ROUTE	LOCATION	SHEET	OF
TRACS NO.		___ OF ___	

NO	DESCRIPTION OF REVISIONS	MADE BY	DATE
1	REISSUED DRAWING WITH MODIFIED APPROACH TAPER	RLF	5/22/07
2	REVISED APPROACH TAPER CRITERIA	RLF	7/09/09
3	ADDED "LEAVEOUT" CALLOUT & REVISED SECTION VIEW	RLF	5/16/11
4	ADDED "LEAVEOUT" DETAIL & NEW GENERAL NOTE 4	RLF	5/16/11