



# I-10 (Ruthrauff Road to Prince Road) Widening Project

Fact Sheet



## Project overview

The Arizona Department of Transportation has begun construction on a widening project along Interstate 10 between Ruthrauff Road and Prince Road in Tucson.

Some of the improvements that are planned as part of this project include:

- ▶ Widening the I-10 freeway to four lanes in each direction to better handle increases in traffic.
- ▶ Reconstructing the Prince Road traffic interchange so Prince Road will pass over the Union Pacific Railroad tracks and I-10.
- ▶ Updating the entrance and exit ramps to provide better connections and improved access for motorists.
- ▶ New landscaping along the project area.

I-10 will remain open with three lanes in each direction during construction, including emergency access lanes, with only minimal short-term lane closures along I-10 in the project area when necessary.

As part of the project, the I-10 Prince Road underpass and entrance and exit ramps will be closed until late 2013; however, Prince Road east of I-10 will remain open throughout the duration of the project. Access to all businesses and properties in the project area will be maintained during construction.



The federally funded \$76,438,547 project was awarded to Pulice Construction Inc. at the State Transportation Board meeting on July 15, 2011. Construction with traffic impacts in limited areas of the project began in September 2011. The project is scheduled to be completed by late 2013.



# I-10 (Ruthrauff Road to Prince Road) Widening Project

Fact Sheet Cont'd



## Project highlights

- ▶ The project will tie into the stretch of I-10 through the downtown Tucson area that was recently widened to four lanes in each direction.
- ▶ The reconstruction of the Prince Road traffic interchange will enhance safety and address traffic congestion at the railroad crossing so motorists can pass over the Union Pacific Railroad (UPRR) tracks and I-10.
- ▶ When complete, the Prince Road overpass will be 30 feet above ground level sloping down on the east side of I-10 to reach current ground level near Runway Drive. On the west side, the overpass will slope down and be realigned with Business Center Drive.

The improvements will allow traffic, including emergency service vehicles, to pass over the railroad tracks without having to wait for the 40 to 60 trains that pass daily through the area and cause vehicles to back up onto I-10 during peak hours. Since the UPRR plans to eventually double the tracks at this location, the project serves to address significantly increased future congestion and delays at Prince Road and the railroad tracks.

## What to expect

- ▶ Construction with traffic impacts in limited areas of the project began in September 2011. Traffic impacts prior to Phase One include Prince Road reduced to one lane of traffic in each direction at I-10, the closure of Business Center Drive at Prince Road and the partial closure of La Cholla Boulevard. The full closure of the Prince Road underpass and ramps started March 12, 2012.
- ▶ Drivers may use other I-10 traffic interchanges nearby to access roadways in the project area, such as the Miracle Mile traffic interchange one mile south of the project and the Ruthrauff Road/El Camino del Cerro traffic interchange two miles north of Prince Road.
- ▶ ADOT will use roadway signs, regular traffic alerts, news media announcements and the project website to provide the public with information about traffic impacts.
- ▶ Pedestrians and bicyclists near the work zone should watch for signage indicating safe access through the project area, as access may change.
- ▶ The construction schedule is subject to change due to a variety of reasons, including weather, coordination with multiple utilities, material availability and mechanical difficulties.

## Slow down in the work zone

Drivers are reminded to slow down in the work zone, proceed through the work zone with caution and be alert for construction equipment and personnel.

## Stay informed

For more information about this project, please visit [www.azdot.gov/tucsonI10widening](http://www.azdot.gov/tucsonI10widening) or call 1-855-712-8530. You may also contact Senior Community Relations Officer Linda Ritter at [Lritter@azdot.gov](mailto:Lritter@azdot.gov), or Community Relations Officer Paki Rico at [prico@azdot.gov](mailto:prico@azdot.gov). Motorists may also visit [www.azdot.gov/tucsonI10widening](http://www.azdot.gov/tucsonI10widening) to review the latest traffic alerts regarding this project and other I-10 projects in the area.

For businesses in the project area, please contact the ADOT Business Outreach Team at 520-777-7271, [marie.miyashiro@elucity.com](mailto:marie.miyashiro@elucity.com) or [beth.wedge@elucity.com](mailto:beth.wedge@elucity.com).

Traffic updates are available at [AZ511.gov](http://AZ511.gov) or by dialing 5-1-1 from any landline or mobile phone anywhere in Arizona.

To sign up to receive email updates regarding the project, visit [www.azdot.gov/statewide](http://www.azdot.gov/statewide). The website also provides information about other projects along the I-10 corridor, as well as projects throughout the state. Visit [www.facebook.com/azdot](http://www.facebook.com/azdot) or [www.azdot.gov](http://www.azdot.gov) for more information about ADOT.



# I-10 (Ruthrauff Road to Prince Road) Widening Project

Fact Sheet Cont'd



## Phase One overview

► Changes in traffic flow for Phase One of the project are occurring over the course of approximately 60 days. Phase One started March 12, 2012, and is anticipated to last until early 2013. The Prince Road underpass and entrance and exit ramps at I-10 are closed, while Prince Road east of I-10 remains open.

## What to expect

### I-10

► I-10 will be shifted slightly to the east with three lanes open in each direction.

### Westbound and eastbound frontage roads will be impacted

► The westbound I-10 frontage road will continue to be reduced to one lane between Miracle Mile and Prince Road and closed between Prince Road and Ruthrauff Road.

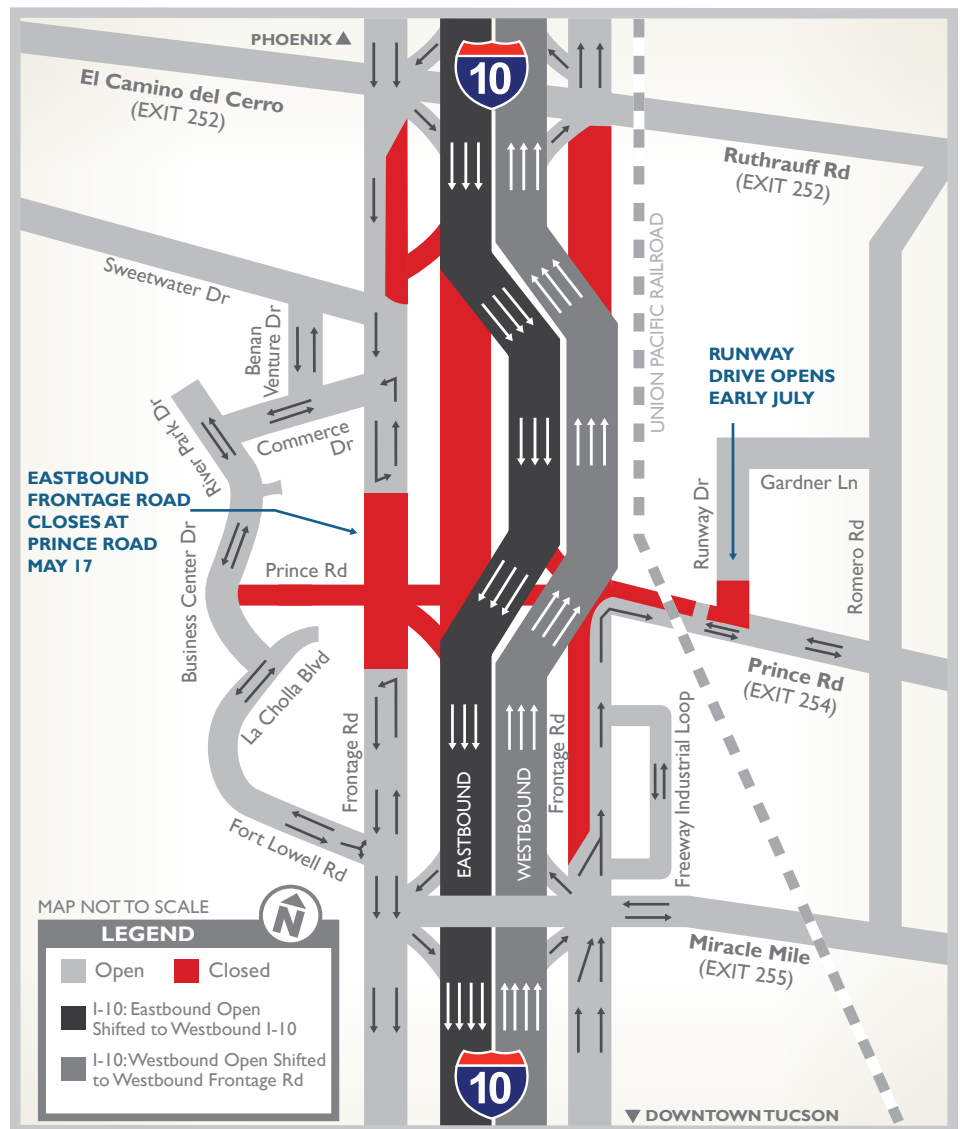
► The eastbound I-10 frontage road will close at Prince Road beginning May 17, 2012. Through-traffic will be reduced to one lane and detoured at Commerce Drive to Fort Lowell Road and back onto the eastbound frontage road, north of Miracle Mile.

► The eastbound I-10 frontage road sections between Commerce Drive north of Prince Road and between Fort Lowell Road south of Prince Road will become two-way roads through early 2013.

### Runway Drive, east of Prince Road TI

► Runway Drive closes between Prince Road and Weymouth Street until early July 2012.

## PHASE ONE – TRAFFIC RESTRICTIONS



While some frontage roads will be impacted during construction, other roadways in the project area will remain accessible. La Cholla Boulevard, Romero Road, Flowing Wells Road and Fairview Avenue will remain open for north/south travel. Ruthrauff Road, El Camino del Cerro, Wetmore Road and Miracle Mile will remain open for east/west travel. Commerce Drive on the west side of I-10 will also remain open.



# I-10 (Ruthrauff Road to Prince Road) Widening Project

Fact Sheet Cont'd



## Phase Two overview

Phase Two is anticipated to begin in early 2013 and end by late 2013. A new eastbound I-10 exit ramp will be open at Prince Road during Phase Two. All other Prince Road entrance and exit ramps, as well as the underpass, will remain closed, while Prince Road will remain open outside these areas. Construction work will focus on the east side of I-10 during Phase Two.

## What to expect

Frontage roads will be impacted.

- ▶ The eastbound I-10 frontage road will be open.
- ▶ The westbound I-10 frontage road from Freeway Industrial Loop's north entrance to Ruthrauff Road will be closed. Traffic from Freeway Industrial Loop will exit the area by a new temporary westbound Miracle Mile I-10 entrance ramp.
- ▶ The westbound I-10 frontage road traffic, south of Prince Road, will be rerouted to westbound I-10 and back onto the westbound I-10 frontage road at Ruthrauff Road.
- ▶ While some frontage roads will be impacted during Phase Two construction, other roadways in the project area will remain accessible. La Cholla Boulevard, Romero Road, Flowing Wells Road and Fairview Avenue will remain open for north/south travel. Ruthrauff Road, El Camino del Cerro, Wetmore Road and Miracle Mile will remain open for east/west travel. Runway Drive on the east side of I-10, and Commerce Drive on the west side of I-10, will also remain open.

## PHASE TWO – AT A GLANCE

