

ARIZONA

MOTOR VEHICLE CRASH FACTS

2011



2011 Motor Vehicle Crash Facts for the State of Arizona

Prepared by:
The Arizona Department of Transportation
Intermodal Transportation Division

Publication Date: August 9, 2012



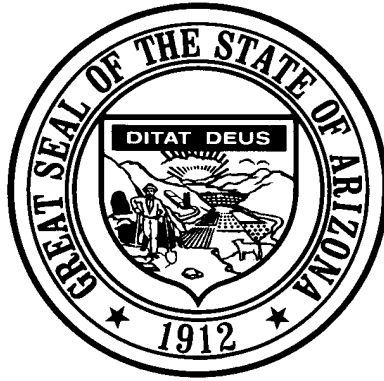
This publication is an annual statistical review of the motor vehicle crashes in the State of Arizona for the calendar year 2011. The results are compiled from Arizona Traffic Accident Reports submitted to the Arizona Department of Transportation by state, county, city, tribal, and other law enforcement agencies. Specific inquiries regarding the data in this report should be directed to:

The Arizona Department of Transportation
Intermodal Transportation Division
Traffic Records Section
206 S. 17th Ave. MD 064R
Phoenix, AZ 85007-3213

E-mail: azcrashfacts@azdot.gov

In order to provide the most current information, preliminary data is utilized when necessary. For this reason, previous or future reports may differ slightly and we encourage you to refer to the latest issue of Motor Vehicle Crash Facts.

This issue as well as previous issues of this publication may be viewed and downloaded from ADOT's Web Site at:
<http://www.azdot.gov/mvd/Statistics/crash/index.asp>



Janice K. Brewer
Governor

Arizona Department of Transportation

John S. Halikowski
Director

State Transportation Board

Barbara (Bobbie) Ann Lundstrom – District 3
Chairwoman

Victor Flores – District 1
Vice Chairman

Members

Joseph E. La Rue – District 1
Stephen W. Christy – District 2

Kelly O. Anderson – District 4

Hank Rogers – District 5

William (Bill) J. Feldmeier – District 6

OVERVIEW

Section 1: – Highlights and Historical Trends1

Section 2: – Geographic Location.....9

Section 3: – Crash Descriptions17

Section 4: – Safety Devices23

Section 5: – Motor Vehicle and Driver Descriptions26

Section 6: – Alcohol Related Crashes.....32

Section 7: – Pedestrian and Pedalcyclist Crashes41

Section 8: – Motorcycle (MC) Crashes46

Acknowledgements55

2011 Arizona Crash Facts Summary

Table of Contents

Section 1: Highlights and Historical Trends	1
Arizona Crash Facts Summary and Comparison.....	2
Arizona at a Glance – 2011	2
Licensed Drivers, Motor Vehicle Registration and Crash History in Arizona	3
Historical Trends – Arizona and the United States	3
Statewide Economic Loss Due to Motor Vehicle Crashes	4
Average Economic Cost per Incident.....	4
Traffic Crashes in Arizona by Year.....	5
Victims of Motor Vehicle Crashes.....	6
Arizona’s 2011 Estimated Population	6
Victims of Motor Vehicle Crashes (Arizona Residents Only)	6
Vehicle Miles Traveled	7
Arizona vs. U.S. Fatality Rate	7
Traffic Fatalities by Geographic Region	7
Traffic Injuries by Geographic Region.....	7
Holiday Crash Statistics	8
Section 2: Geographic Location	9
Crash Severity by First Harmful Event Statewide.....	10
Crashes by County	10
Crash Severity by First Harmful Event in Urban Areas	11
Crash Severity by First Harmful Event in Rural Areas	11
Analysis by Jurisdiction	12
Total Fatalities by County for 2010 and 2011	15
Urban and Rural Crashes by Day of Week.....	16
Urban and Rural Fatal Crashes by Day of Week.....	16
All Urban and Rural Crashes vs. Urban and Rural Fatal Crashes by Month.....	16
Section 3: Crash Descriptions	17
Manner of Collision in Multi-Vehicle Crashes	18
Lighting Conditions.....	18
Weather Conditions.....	18
Road Surface Conditions.....	19
Roadway Grade.....	19
Roadway Alignment.....	19
All Crashes vs. Fatal Crashes by Time of Day - Weekdays	20
All Crashes vs. Fatal Crashes by Time of Day - Weekends	20
Crashes by Day of Week	21
Fatal Crashes by Day of Week	21
All Crashes vs. Fatal Crashes by Month.....	21
Crashes by Hour and Day of Week	22
Section 4: Safety Devices	23
Child Safety Device Usage (less than five years old).....	24
Driver Safety Device Usage	24
Passenger Safety Device Usage.....	24
Driver Safety Device Usage by Gender	25
Driver Safety Device Usage by Age	25
Section 5: Motor Vehicle and Driver Descriptions	26
Arizona Motor Vehicle Registrations.....	27
Motor Vehicle Crash Involvement by Vehicle Type.....	27
Hit and Run Drivers Involved in Crashes.....	28
Gender of Drivers Involved in Crashes	28

2011 Arizona Crash Facts Summary

License Status of Drivers Involved in Crashes	28
Passengers Killed and Injured by Age and Gender	28
Drivers and Passengers Killed and Injured by Vehicle Type	29
Drivers Killed and Injured by Age and Gender	29
Licensed Drivers in Arizona by Age	30
Driver Involvement by Age	30
Driver Violations	31
Driver Physical Condition	31
Section 6: Alcohol Related Crashes	32
Economic Loss Due to Alcohol Related Crashes in Arizona for 2011	33
Alcohol Related Crash History	33
Manner of Collision in Alcohol Related Crashes	33
Alcohol Related Crashes by First Harmful Event	34
Alcohol Related Crashes by Vehicle Type	34
Lighting Conditions in Alcohol Related Crashes	35
Road Surface Conditions in Alcohol Related Crashes	35
Gender of Drivers Involved in Alcohol Related Crashes	35
Driver Involvement by Age in Alcohol Related Crashes	36
When Alcohol Related Crashes Occurred in 2011	36
Safety Device Usage for Drinking Drivers	36
Persons Killed and Injured in Alcohol Related Crashes	37
Alcohol Related Crashes by County	37
All Alcohol Related Crashes vs. Fatal Alcohol Related Crashes by Day of Week	38
All Alcohol Related Crashes vs. Fatal Alcohol Related Crashes by Month	38
All Alcohol Related Crashes vs. Fatal Alcohol Related Crashes - Weekdays	39
All Alcohol Related Crashes vs. Fatal Alcohol Related Crashes - Weekends	39
Alcohol Related Crashes by Hour and Day of Week	40
Section 7: Pedestrian and Pedalcyclist Crashes	41
Pedestrians Killed and Injured By Age and Gender	42
Pedestrian Crashes by Geographic Location	42
Pedestrian Crash History	42
Pedestrians Killed by Age and Action	43
Pedestrians Injured by Age and Action	43
Pedestrian Physical Condition in Motor Vehicle Crashes	43
Lighting Conditions in Pedestrian Crashes	44
Weather Conditions in Pedestrian Crashes	44
Pedalcyclists Killed and Injured by Age and Gender	44
Pedalcycle Crashes by Geographic Location	45
Pedalcycle Crash History	45
Lighting Conditions in Pedalcyclist Crashes	45
Weather Conditions in Pedalcyclist Crashes	45
Section 8: Motorcycle (MC) Crashes	46
MC Fatalities by Year	47
MC Registrations in Arizona	47
Fatality Rate per Registered MC	47
Percent of MC Crashes to All Crashes	47
MC Crashes by First Harmful Event	48
Lighting Conditions in MC Crashes	48
Road Surface Conditions in MC Crashes	48
MC Crashes by Geographic Location	49
Operator Involvement by Age in MC Crashes	49
MC Operator Physical Condition	49
MC Operators Involved in Fatal Crashes by License Status	50
MC Operator's Helmet Use	50

2011 Arizona Crash Facts Summary

MC Passenger's Helmet Use	50
MC Operators and Passengers Killed and Injured.....	51
MC Operator Errors	51
All MC Crashes vs. Fatal MC Crashes by Time of Day - Weekdays.....	52
All MC Crashes vs. Fatal MC Crashes by Time of Day - Weekends.....	52
All MC Crashes vs. Fatal MC Crashes by Day of Week.....	53
Alcohol Related MC Crashes vs. Fatal Alcohol Related MC Crashes by Day of Week.....	53
MC Crashes by Hour and Day of Week.....	54
Acknowledgements	55

2011 Arizona Crash Facts Summary

BREAKDOWN OF ALL CRASHES IN ARIZONA

TOTAL	103,423
FATAL	754
INJURY	33,030
PROPERTY DAMAGE ONLY	69,639
URBAN	82,864
RURAL	20,559
ALCOHOL RELATED	5,537
PEDESTRIAN	1,507
PEDALCYCLE	1,910
MOTORCYCLE	2,980
SINGLE VEHICLE	18,637
MULTI-VEHICLE	84,786

BREAKDOWN OF FATAL CRASHES IN ARIZONA

TOTAL	754
ALCOHOL RELATED	236
URBAN	370
RURAL	384
SINGLE VEHICLE	305
MULTI-VEHICLE	449
ALCOHOL RELATED SINGLE VEHICLE	94
ALCOHOL RELATED MULTI-VEHICLE	142

BREAKDOWN OF PERSONS KILLED AND INJURED

TYPE	KILLED	INJURED
IN ALL CRASHES	825	49,550
IN ALCOHOL RELATED CRASHES	265	3,660
IN URBAN CRASHES	389	39,874
IN RURAL CRASHES	436	9,676
USING SAFETY DEVICE	224	39,230
NOT USING SAFETY DEVICE	292	3,755
DRIVERS AGE 24 OR YOUNGER	84	7,677
DRINKING DRIVERS AGE 24 OR YOUNGER	27	515

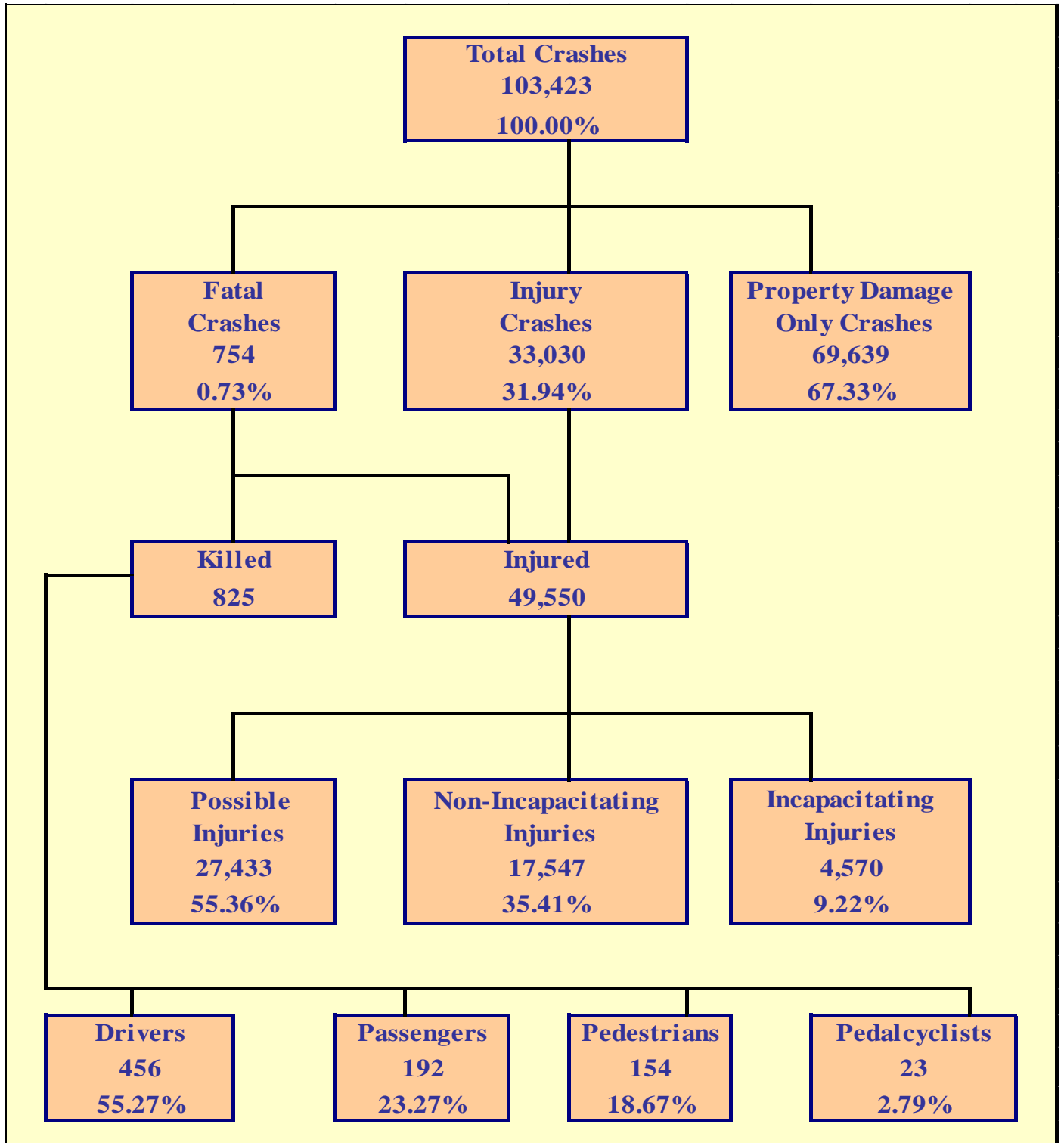
BREAKDOWN OF CRASHES BY TIME

PEAK MONTH FOR ALL CRASHES	DECEMBER
PEAK DAY FOR ALL CRASHES	FRIDAY
PEAK HOUR FOR ALL CRASHES	5 PM - 6 PM
PEAK MONTH FOR FATAL CRASHES	AUGUST
PEAK DAY FOR FATAL CRASHES	SATURDAY
PEAK DATE FOR ALL CRASHES IN 2011	DECEMBER 13TH (496 CRASHES)
PEAK DATE FOR FATAL CRASHES IN 2011	AUGUST 9TH (9 CRASHES)
PEAK HOUR FOR ALCOHOL RELATED CRASHES	2 AM - 3 AM
PEAK DAY FOR MOTORCYCLE CRASHES	SATURDAY
PEAK HOUR FOR FATAL MOTORCYCLE CRASHES	2 PM - 3 PM

OTHER FACTS

MOST COMMON MANNER OF COLLISION	REAR END
MOST COMMON DRIVER VIOLATION	SPEED TOO FAST FOR CONDITIONS

THIS PAGE LEFT BLANK FOR PRINTING PURPOSES



Section 1: – Highlights and Historical Trends

Table 1 - 1

Arizona Crash Facts Summary and Comparison

Category	2010	2011	Percent Change
Total Crashes	106,795	103,423	-3.16%
Total Fatalities	759	825	8.70%
Total Injuries	50,404	49,550	-1.69%
Alcohol Related Fatalities	255	265	3.92%
Alcohol Related Injuries	3,785	3,660	-3.30%
Urban Fatalities	378	389	2.91%
Urban Injuries	40,088	39,874	-0.53%
Rural Fatalities	381	436	14.44%
Rural Injuries	10,316	9,676	-6.20%
MC Operator and Passenger Fatalities	85	132	55.29%
MC Operator and Passenger Injuries	2,401	2,553	6.33%
Pedestrians Fatalities	154	154	0.00%
Pedestrians Injuries	1,250	1,253	0.24%
Pedalcyclist Fatalities	19	23	21.05%
Pedalcyclist Injuries	1,595	1,604	0.56%
Millions of vehicle miles traveled (VMT)	59,906	59,575	-0.55%
Fatalities per 100 million VMT	1.27	1.38	9.30%
Injuries per 100 million VMT	84.14	83.17	-1.15%

Arizona at a Glance – 2011

- Approximately **2.26** persons were killed each day.
- One person was killed every **10.63** hours.
- There were **135.66** persons injured every day.
- One person was injured every **10.61** minutes.
- Alcohol Related crashes accounted for **5.35%** of all crashes and **31.30%** of all fatal crashes.
- Of all alcohol related crashes, **77.93%** occurred in Urban areas and **22.07%** occurred in Rural areas, while **58.90%** of all alcohol related fatal crashes occurred in Urban areas and **41.10%** occurred in Rural areas.
- Single vehicle crashes accounted for **18.02%** of all crashes and **40.45%** of all fatal crashes.
- Of all Pedestrian crashes, **10.09%** were fatal while **1.20%** of Pedalcycle crashes were fatal.
- Crashes which occurred during daylight hours (6:00 a.m. to 6:00 p.m.) accounted for **72.7%** of all crashes.
- Motor vehicle crashes resulted in **\$2.893** billion in economic losses to Arizona.
- Children age 14 and younger accounted for **34** fatalities and **3,563** injuries in motor vehicle crashes.

The Nation In 2011

The population of the United States was estimated at **313,888,707** (source: www.census.gov).

Estimated vehicle miles traveled totaled **2.946 billion** miles.

An estimated **32,367** persons were killed in motor vehicle crashes in the United States.

Source for this data: www.nhtsa.gov.

Table 1 - 2

Licensed Drivers, Motor Vehicle Registration and Crash History in Arizona

Calendar Year	Total Crashes	Fatal Crashes	Injury Crashes	Property Damage Only Crashes	Total Persons Killed	Total Persons Injured	Total Licensed Drivers	Total Registered Vehicles
2007	141,193	952	43,560	96,681	1,071	66,062	4,212,393	4,848,162
2008	120,557	843	37,515	82,199	938	56,539	4,360,711	4,842,188
2009	107,126	709	33,493	72,924	806	50,785	4,434,719	4,787,350
2010	106,795	695	33,381	72,719	759	50,404	4,537,653	4,805,904
2011	103,423	754	33,030	69,639	825	49,550	4,634,405	4,855,014

Table 1 - 3

Historical Trends – Arizona and the United States

Calendar Year	U.S. Fatality Rate*	Arizona Fatality Rate	Arizona Traffic Fatalities	Estimated Motor Vehicle Miles Traveled	Arizona Fatal Crash Rate
2007	1.36	1.70	1,071	62,962	1.51
2008	1.26	1.52	938	61,628	1.37
2009	1.15	1.34	806	60,142	1.18
2010	1.11	1.27	759	59,906	1.16
2011	1.10	1.38	825	59,575	1.27

Vehicle miles traveled are shown in million miles and rates per 100 million miles

*Source for U.S. Fatality Rate: www.nhtsa.gov

Section 1: – Highlights and Historical Trends

Statewide Economic Loss Due to Motor Vehicle Crashes

Fatalities	\$1,186,515,000
Incapacitating Injuries	\$322,568,880
Non-Incapacitating Injuries	\$399,124,062
Possible Injuries	\$352,568,916
Property Damage Only	\$632,182,842
TOTAL	\$2,892,959,700

Table 1 - 4

Estimated Economic Loss by County

County	Cost of Traffic Crashes			
	Fatalities	Injuries	PDO	Total
Apache	\$ 63,280,800	\$ 4,444,242	\$ 2,215,032	\$ 69,940,074
Cochise	\$ 33,078,600	\$ 15,980,850	\$ 11,029,770	\$ 60,089,220
Coconino	\$ 64,719,000	\$ 29,857,236	\$ 23,167,056	\$ 117,743,292
Gila	\$ 27,325,800	\$ 10,261,914	\$ 5,455,878	\$ 43,043,592
Graham	\$ 10,067,400	\$ 4,075,104	\$ 1,606,806	\$ 15,749,310
Greenlee	\$ 1,438,200	\$ 974,814	\$ 689,928	\$ 3,102,942
La Paz	\$ 40,269,600	\$ 5,705,778	\$ 1,806,522	\$ 47,781,900
Maricopa	\$ 474,606,000	\$ 703,760,526	\$ 448,189,938	\$ 1,626,556,464
Mohave	\$ 56,089,800	\$ 40,658,934	\$ 17,702,100	\$ 114,450,834
Navajo	\$ 47,460,600	\$ 13,087,212	\$ 7,734,456	\$ 68,282,268
Pima	\$ 143,820,000	\$ 138,842,910	\$ 49,620,348	\$ 332,283,258
Pinal	\$ 112,179,600	\$ 41,972,082	\$ 23,448,474	\$ 177,600,156
Santa Cruz	\$ 4,314,600	\$ 3,597,846	\$ 3,676,590	\$ 11,589,036
Yavapai	\$ 76,224,600	\$ 34,830,858	\$ 19,281,672	\$ 130,337,130
Yuma	\$ 31,640,400	\$ 26,211,552	\$ 16,558,272	\$ 74,410,224
TOTALS	\$ 1,186,515,000	\$ 1,074,261,858	\$ 632,182,842	\$ 2,892,959,700

NOTE: Cost estimates are based on a 2% increase of the 2010 National Safety Council estimates of the average cost of motor vehicle crashes, deaths, and injuries. These costs are an estimate of wage and productivity losses, medical expenses, administrative expenses, motor vehicle damage, and employer costs. A description of the National Safety Council's current cost estimating procedures may be found in the Technical Appendix of *Injury Facts*[®]. Effective with the 1993 bulletin, the Council extensively revised its cost estimating procedures.

Table 1 - 5

Average Economic Cost per Incident

1.	Fatality	\$1,438,200
2.	Incapacitating Injury	\$70,584
3.	Non-Incapacitating Injury	\$22,746
4.	Possible Injury	\$12,852
5.	Property Damage Only	\$9,078

Traffic Crashes in Arizona by Year

Chart 1 - 1
Total Crashes

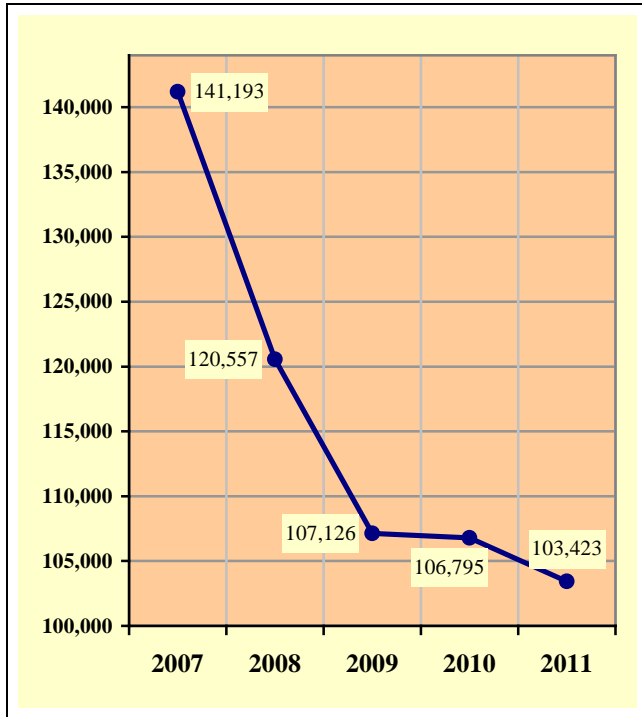


Chart 1 - 2
Fatal Crashes

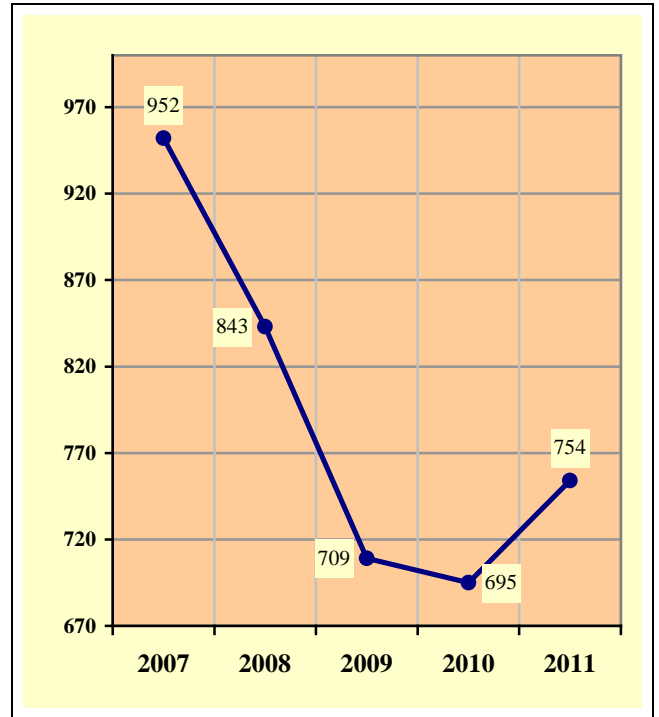


Chart 1 - 3
Injury Crashes

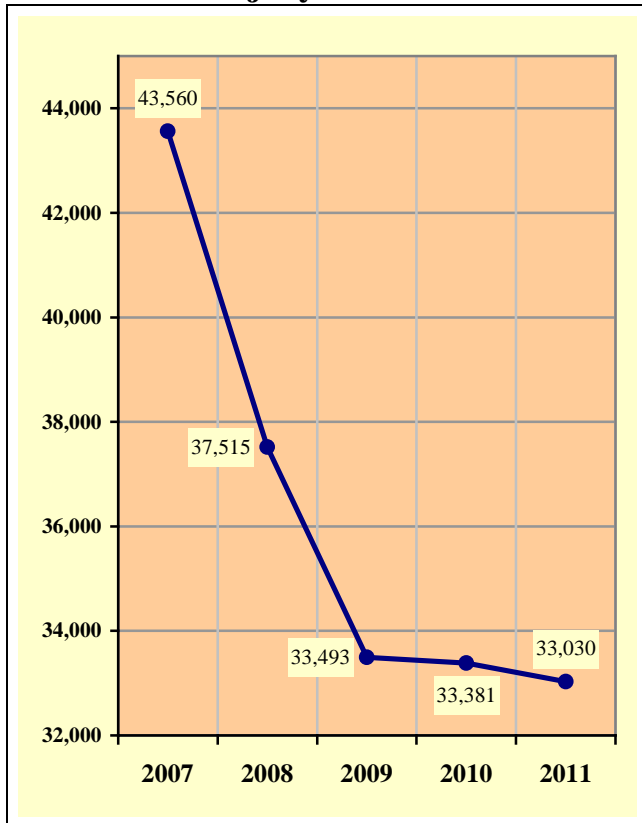
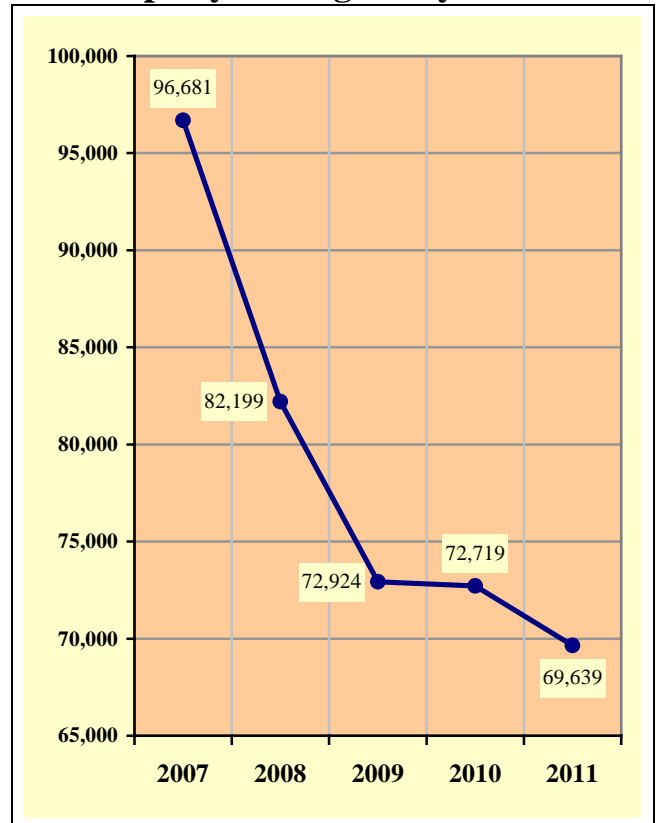


Chart 1 - 4
Property Damage Only Crashes



Section 1: – Highlights and Historical Trends

Table 1 - 6
Victims of Motor Vehicle Crashes

Age of Victim	Persons Killed			Persons Injured			
	Total	Male	Female	Total	Male	Female	Gender Unknown
0-4	12	9	3	930	454	476	0
5-9	9	7	2	1,173	580	593	0
10-14	13	9	4	1,460	715	745	0
15-19	65	49	16	5,387	2,492	2,895	0
20-24	83	63	20	6,546	3,171	3,375	0
25-34	142	97	45	9,365	4,496	4,869	0
35-44	109	75	34	7,460	3,549	3,911	0
45-54	123	92	31	6,972	3,409	3,563	0
55-64	127	91	36	5,036	2,379	2,657	0
65-74	64	47	17	2,625	1,217	1,408	0
75 & Older	77	49	28	1,712	767	945	0
Unknown	1	1	0	884	374	397	113
TOTAL	825	589	236	49,550	23,603	25,834	113

Table 1 - 7

Arizona's 2011 Estimated Population

Race/Ethnic group	Population Percentage	Traffic Crash Fatality Percentage	Population Estimate*
White non-Hispanic	58.70%	52.11%	3,779,432
Hispanic or Latino	28.39%	22.99%	1,827,753
Black or African American	4.21%	3.58%	270,944
American Indian or Alaska Native	5.60%	18.52%	360,414
Asian or Pacific Islander	3.10%	1.40%	199,635
Ethnicity Unknown	N/A	1.40%	N/A
TOTAL	100.00%	100.00%	6,438,178

Source: Arizona Department of Health Services, Health Status and Vital Statistics Section.
*Population estimates for 2011 are available at www.azdhs.gov/plan/menu/info/pop/pop11/pd11.htm

Table 1 - 8

Victims of Motor Vehicle Crashes (Arizona Residents Only)*

Age of Victim	Total Killed	M a l e	F e m a l e	Detail Breakdown:					
				White non-Hispanic	Hispanic or Latino	Black or African American	American Indian or Alaska Native	Asian or Pacific Islander	Ethnicity Unknown
1-14	33	26	7	13	11	2	5	0	2
15-19	58	45	13	18	21	2	17	0	0
20-44	326	225	101	143	88	12	75	2	6
45-64	222	164	58	133	39	9	34	5	2
65 & Older	144	100	44	101	21	3	14	4	1
TOTAL	783	560	223	408	180	28	145	11	11

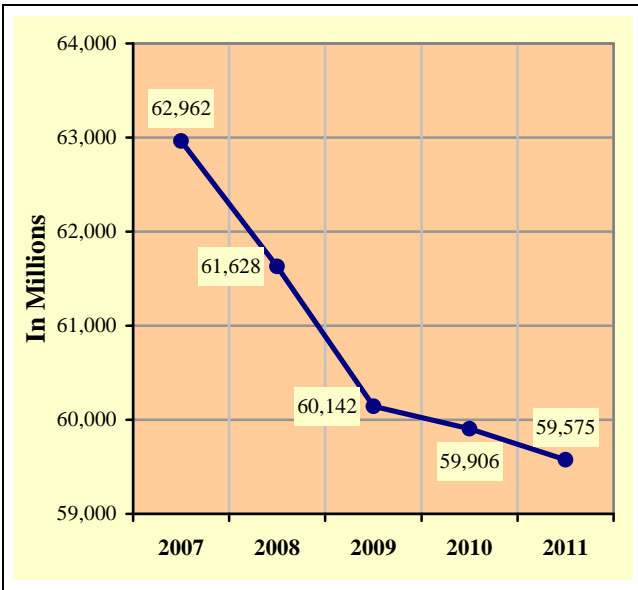
Source: Arizona Department of Health Services, Health Status and Vital Statistics Section (www.azdhs.gov/plan/report/ahs/ahs2011/toc11.htm).

*Includes victims of crashes occurring outside Arizona.

Section 1: – Highlights and Historical Trends

Chart 1 - 5

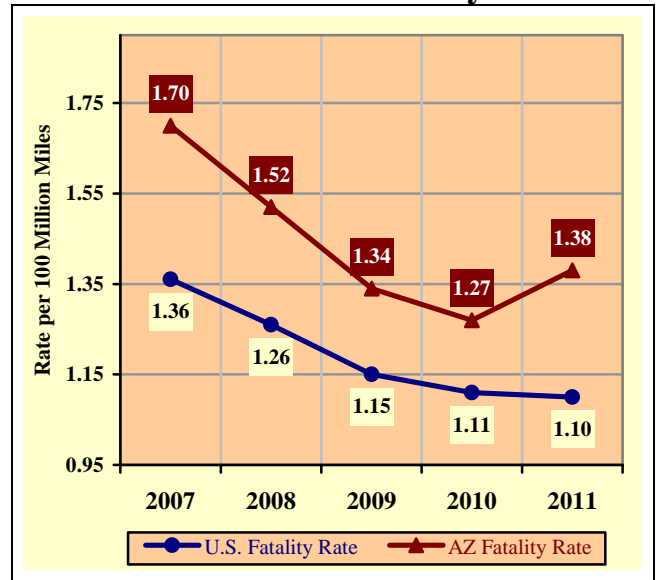
Vehicle Miles Traveled



Source: ADOT – Multimodal Planning Division – Data Bureau

Chart 1 – 6

Arizona vs. U.S. Fatality Rate



Source for U.S. Fatality Rate: www.nhtsa.gov.

Chart 1 - 7

Traffic Fatalities by Geographic Region

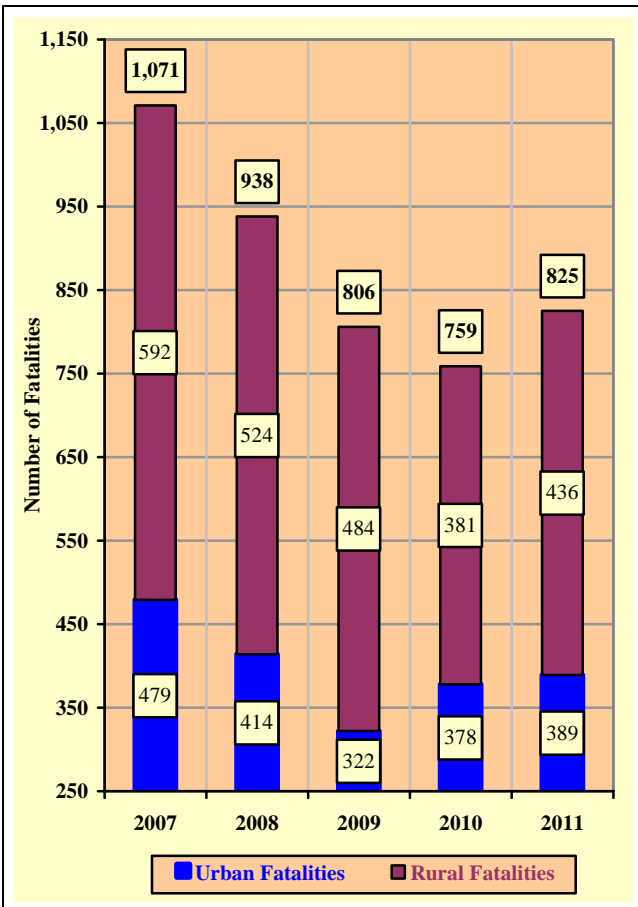
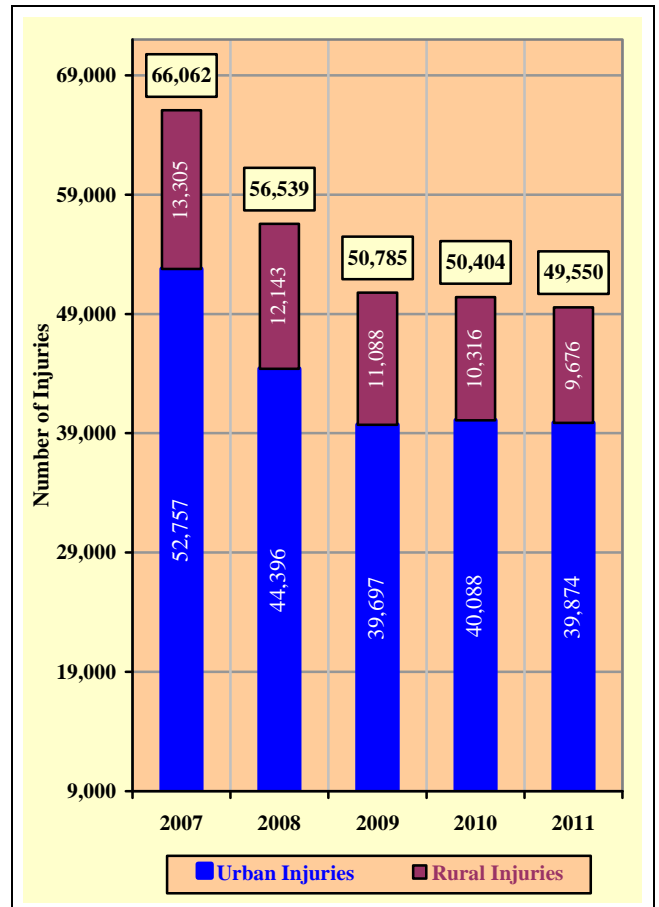


Chart 1 - 8

Traffic Injuries by Geographic Region



Section 1: – Highlights and Historical Trends

Table 1 - 9

Holiday Crash Statistics

Holidays such as Memorial Day, Labor Day, and Thanksgiving are regarded as three or four day weekend holidays for statistical purposes. Holidays such as Christmas, New Year's Day, and the Fourth of July are celebrated on specific dates; which make the holiday period range from two to five days in length.

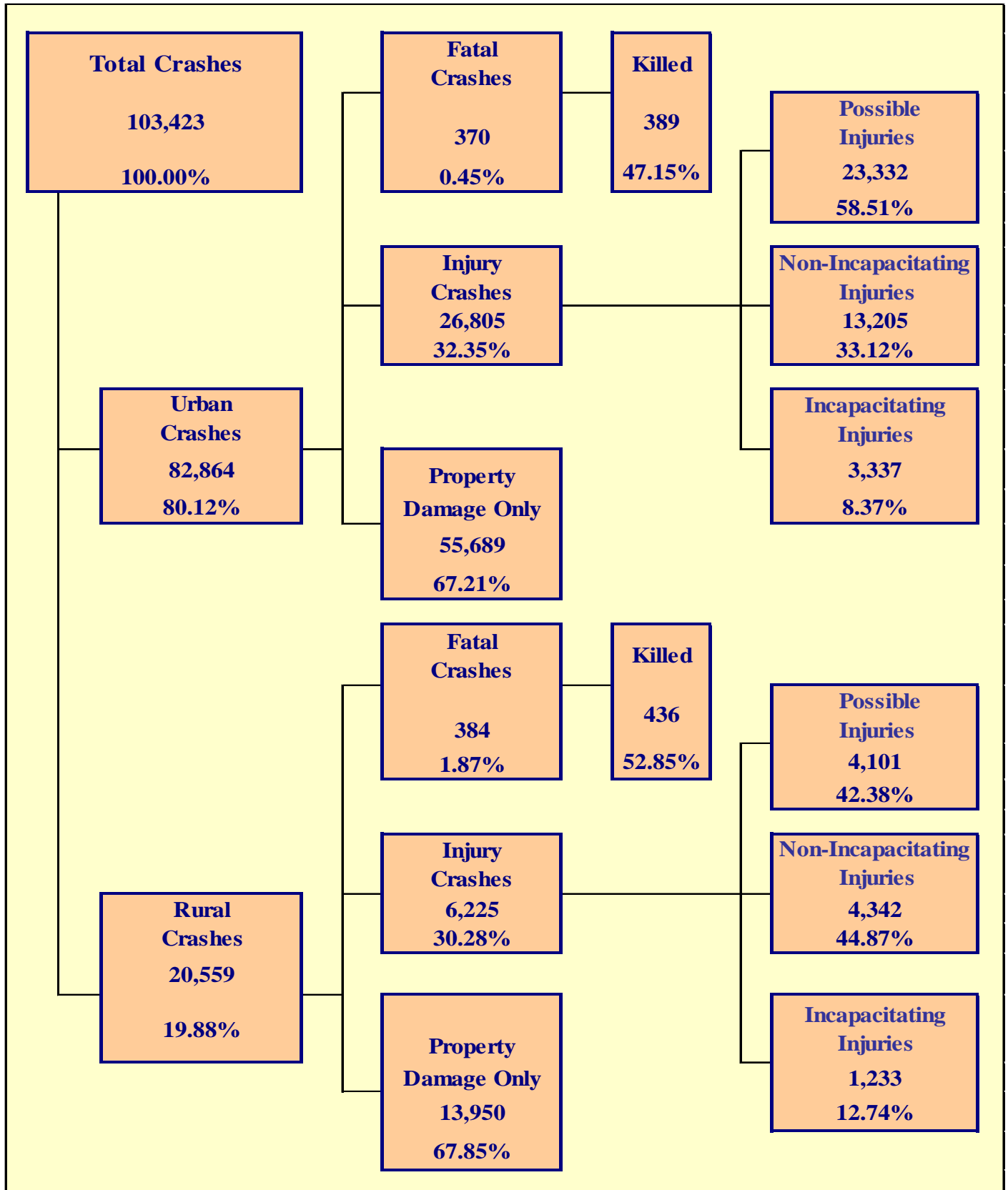
Holiday fatality statistics are based on fatal crashes occurring from 6:00 p.m. on the last working day prior to the holiday through 5:59 a.m. the day following the holiday period. Example: Thanksgiving fatalities are counted from Wednesday evening at 6:00 p.m. through 5:59 a.m. of the following Monday.

2011 Holidays	Beginning at 6:00 p.m.	Ending at 5:59 a.m.	Number of Days	Fatal Crashes	Persons Killed	Alcohol Related Fatal Crashes	Alcohol Related Fatalities
New Year's Day	Thursday	Monday	4	5	5	3	3
	12/30/2010	1/3/2011					
Memorial Day	Friday	Tuesday	4	8	9	1	1
	5/27/2011	5/31/2011					
July 4th	Friday	Tuesday	4	9	11	3	4
	7/1/2011	7/5/2011					
Labor Day	Friday	Tuesday	4	7	8	1	1
	9/2/2011	9/6/2011					
Thanksgiving Day	Wednesday	Monday	5	12	14	3	4
	11/23/2011	11/28/2011					
Christmas Day	Friday	Tuesday	4	6	6	4	4
	12/23/2011	12/27/2011					

Fatal Crashes by Year	New Year's Day	Memorial Day	July 4th	Labor Day	Thanksgiving	Christmas Day	Total
2007	9	7	1	10	14	9	50
2008	10	14	13	14	5	2	58
2009	10	6	7	5	11	7	46
2010	9	8	14	9	11	9	60
2011	5	8	9	7	12	6	47

Persons Killed	New Year's Day	Memorial Day	July 4th	Labor Day	Thanksgiving	Christmas Day	Total
2007	9	7	1	11	16	12	56
2008	11	17	15	19	5	2	69
2009	11	7	7	7	12	7	51
2010	10	8	16	11	12	10	67
2011	5	9	11	8	14	6	53

Number of Days	New Year's Day	Memorial Day	July 4th	Labor Day	Thanksgiving	Christmas Day	Total
2007	4	4	2	4	5	5	24
2008	5	4	4	4	5	5	27
2009	5	4	4	4	5	4	26
2010	4	4	4	4	5	4	25
2011	4	4	4	4	5	4	25



Section 2: – Geographic Location

Fatal Crashes in Arizona (754) accounted for 0.73% of all crashes, Injury Crashes (33,030) accounted for 31.94%, and Property Damage Only (PDO) Crashes (69,639) accounted for 67.33%.

Table 2 - 1

Crash Severity by First Harmful Event Statewide

First Harmful Event Type	Number of Crashes				Number of Persons	
	Total	Fatal	Injury	PDO	Killed	Injured
Collision with Motor Vehicle in Transport	70,224	251	21,099	48,874	291	33,777
Overturning	2,611	171	1,599	841	184	2,457
Collision with Pedestrian	1,212	149	925	138	151	1,024
Collision with Pedalcyclist	1,669	23	1,379	267	23	1,421
Collision with Animal	1,679	2	184	1,493	2	224
Collision with Fixed Object	11,145	114	3,353	7,678	125	4,171
Collision with Non-fixed Object*	4,489	13	458	4,018	16	588
Vehicle Fire or Explosion	340	1	11	328	1	16
Other Non-collision**	1,612	11	559	1,042	11	649
Unknown	8,442	19	3,463	4,960	21	5,223
TOTAL	103,423	754	33,030	69,639	825	49,550
*Includes Collision with Parked Vehicles, Trains, Railway Vehicles, and Work Zone Equipment						
**Includes Vehicle Immersion, Jackknife, and Cargo Loss or Shift						

Table 2 - 2

Crashes by County

County	Number of Crashes				Number of Persons	
	Total	Fatal	Injury	PDO	Killed	Injured
Apache	378	41	93	244	44	156
Cochise	1,677	22	440	1,215	23	643
Coconino	3,430	38	840	2,552	45	1,262
Gila	888	18	269	601	19	400
Graham	273	6	90	177	7	160
Greenlee	109	1	32	76	1	43
La Paz	334	21	114	199	28	195
Maricopa	72,454	309	22,774	49,371	330	34,031
Mohave	2,992	37	1,005	1,950	39	1,504
Navajo	1,209	30	327	852	33	530
Pima	9,578	94	4,018	5,466	100	6,064
Pinal	3,757	68	1,106	2,583	78	1,718
Santa Cruz	522	3	114	405	3	176
Yavapai	3,111	46	941	2,124	53	1,366
Yuma	2,711	20	867	1,824	22	1,302
TOTAL	103,423	754	33,030	69,639	825	49,550

Table 2 - 3

Crash Severity by First Harmful Event in Urban Areas

First Harmful Event Type	Number of Crashes				Number of Persons	
	Total	Fatal	Injury	PDO	Killed	Injured
Collision with Motor Vehicle in Transport	59,677	137	17,993	41,547	151	28,463
Overturning	682	33	474	175	35	653
Collision with Pedestrian	1,081	107	844	130	108	931
Collision with Pedalcyclist	1,537	21	1,274	242	21	1,306
Collision with Animal	210	1	26	183	1	33
Collision with Fixed Object	7,309	56	2,156	5,097	58	2,612
Collision with Non-fixed Object*	3,440	6	350	3,084	6	430
Vehicle Fire or Explosion	115	0	2	113	0	6
Other Non-collision**	930	5	372	553	5	426
Unknown	7,883	4	3,314	4,565	4	5,014
TOTAL	82,864	370	26,805	55,689	389	39,874
*Includes Collision with Parked Vehicles, Trains, Railway Vehicles, and Work Zone Equipment						
**Includes Vehicle Immersion, Jackknife, and Cargo Loss or Shift						

Table 2 - 4

Crash Severity by First Harmful Event in Rural Areas

First Harmful Event Type	Number of Crashes				Number of Persons	
	Total	Fatal	Injury	PDO	Killed	Injured
Collision with Motor Vehicle in Transport	10,547	114	3,106	7,327	140	5,314
Overturning	1,929	138	1,125	666	149	1,804
Collision with Pedestrian	131	42	81	8	43	93
Collision with Pedalcyclist	132	2	105	25	2	115
Collision with Animal	1,469	1	158	1,310	1	191
Collision with Fixed Object	3,836	58	1,197	2,581	67	1,559
Collision with Non-fixed Object*	1,049	7	108	934	10	158
Vehicle Fire or Explosion	225	1	9	215	1	10
Other Non-collision**	682	6	187	489	6	223
Unknown	559	15	149	395	17	209
TOTAL	20,559	384	6,225	13,950	436	9,676
*Includes Collision with Parked Vehicles, Trains, Railway Vehicles, and Work Zone Equipment						
**Includes Vehicle Immersion, Jackknife, and Cargo Loss or Shift						

While Urban Crashes in Arizona (82,864) accounted for 80.12% of all crashes, they accounted for 49.07% of all Fatal Crashes (370) occurring in 2011.

While Rural Crashes in Arizona (20,559) accounted for 19.88% of all crashes, they accounted for 50.93% of all Fatal Crashes (384) occurring in 2011.

Section 2: – Geographic Location

Table 2 - 5

Analysis by Jurisdiction

COUNTIES Cities	Number of Crashes				No. of Persons		Alcohol Related		
	Total	Fatal	Injury	PDO	Killed	Injured	Crashes	Killed	Injured
Apache County	319	41	81	197	44	137	23	7	14
Eagar	30	0	4	26	0	10	1	0	0
St. Johns	11	0	3	8	0	3	1	0	0
Springerville	18	0	5	13	0	6	0	0	0
TOTAL	378	41	93	244	44	156	25	7	14

Cochise County	609	16	192	401	17	309	31	1	17
Benson	91	3	18	70	3	23	5	0	3
Bisbee	1	1	0	0	1	0	0	0	0
Douglas	223	0	34	189	0	40	13	0	5
Huachuca City	10	0	3	7	0	4	1	0	2
Sierra Vista	707	2	184	521	2	253	27	1	14
Tombstone	1	0	0	1	0	0	0	0	0
Willcox	35	0	9	26	0	14	0	0	0
TOTAL	1,677	22	440	1,215	23	643	77	2	41

Coconino County	1,353	28	379	946	35	623	59	11	58
Flagstaff	1,763	7	403	1,353	7	542	88	3	47
Fredonia	1	0	0	1	0	0	0	0	0
Williams	99	0	14	85	0	30	0	0	0
Page	16	2	7	7	2	18	4	2	6
Sedona	198	1	37	160	1	49	6	0	6
TOTAL	3,430	38	840	2,552	45	1,262	157	16	117

Gila County	588	17	174	397	18	269	39	3	52
Globe	169	1	52	116	1	72	13	1	7
Hayden	0	0	0	0	0	0	0	0	0
Miami	15	0	9	6	0	13	0	0	0
Payson	116	0	34	82	0	46	9	0	3
Winkelman	0	0	0	0	0	0	0	0	0
TOTAL	888	18	269	601	19	400	61	4	62

Graham County	126	5	42	79	6	87	17	5	14
Pima	2	0	1	1	0	3	0	0	0
Safford	89	0	30	59	0	44	6	0	2
Thatcher	56	1	17	38	1	26	3	0	4
TOTAL	273	6	90	177	7	160	26	5	20

Greenlee County	68	1	18	49	1	21	3	1	2
Clifton	40	0	13	27	0	20	3	0	1
Duncan	1	0	1	0	0	2	0	0	0
TOTAL	109	1	32	76	1	43	6	1	3

Table 2 - 5

Analysis by Jurisdiction

COUNTIES Cities	Number of Crashes				No. of Persons		Alcohol Related		
	Total	Fatal	Injury	PDO	Killed	Injured	Crashes	Killed	Injured
La Paz County	284	20	95	169	27	168	14	8	13
Parker	18	0	5	13	0	7	0	0	0
Quartzite	32	1	14	17	1	20	2	1	1
TOTAL	334	21	114	199	28	195	16	9	14

Maricopa County	5,292	57	1,699	3,536	64	2,525	264	17	208
Avondale	1,127	8	307	812	8	487	46	2	25
Buckeye	422	4	134	284	5	187	24	1	9
Cave Creek	56	0	20	36	0	28	6	0	4
Chandler	3,922	12	1,134	2,776	12	1,603	196	6	91
El Mirage	356	0	91	265	0	133	24	0	6
Gila Bend	31	0	11	20	0	16	0	0	0
Gilbert	2,374	5	567	1,802	5	803	106	0	64
Glendale	5,014	21	1,434	3,559	21	2,193	210	9	128
Goodyear	808	3	256	549	4	375	48	3	36
Mesa	6,599	34	2,142	4,423	37	3,046	310	16	199
Paradise Valley	231	1	77	153	1	95	7	0	5
Peoria	2,301	9	711	1,581	11	1,051	89	6	47
Phoenix	31,052	124	10,408	20,520	129	16,067	1,562	51	1,039
Scottsdale	3,593	11	1,172	2,410	12	1,646	212	7	126
Surprise	1,035	5	257	773	6	395	44	1	22
Tempe	7,119	12	2,069	5,038	12	2,988	316	1	185
Tolleson	365	0	81	284	0	119	7	0	5
Wickenburg	101	0	20	81	0	30	1	0	0
Youngtown	20	1	10	9	1	14	1	0	1
Guadalupe	283	0	84	199	0	107	10	0	9
Litchfield Park	30	0	5	25	0	7	0	0	0
Queen Creek	144	0	40	104	0	51	4	0	5
Fountain Hills	149	1	36	112	1	51	12	0	2
Carefree	30	1	9	20	1	14	4	0	3
TOTAL	72,454	309	22,774	49,371	330	34,031	3,503	120	2,219

Mohave County	1,168	31	395	742	33	651	68	4	52
Kingman	546	0	194	352	0	266	24	0	15
Lake Havasu City	641	2	186	453	2	250	63	0	32
Bullhead City	621	4	223	394	4	327	51	2	31
Colorado City	16	0	7	9	0	10	0	0	0
TOTAL	2,992	37	1,005	1,950	39	1,504	206	6	130

Section 2: – Geographic Location

Table 2 - 5

Analysis by Jurisdiction

COUNTIES Cities	Number of Crashes				No. of Persons		Alcohol Related		
	Total	Fatal	Injury	PDO	Killed	Injured	Crashes	Killed	Injured
Navajo County	606	27	197	382	29	319	56	10	52
Holbrook	82	0	20	62	0	34	6	0	5
Show Low	195	1	41	153	2	65	4	0	6
Snowflake	58	0	14	44	0	22	4	0	0
Taylor	31	0	7	24	0	10	0	0	0
Winslow	136	0	21	115	0	29	13	0	8
Pinetop-Lakeside	101	2	27	72	2	51	8	1	7
TOTAL	1,209	30	327	852	33	530	91	11	78

Pima County	3,776	33	1,158	2,585	37	1,803	270	13	163
South Tucson	79	0	30	49	0	51	4	0	5
Tucson	4,215	54	2,467	1,694	56	3,690	427	22	314
Sahuarita	215	1	56	158	1	88	10	0	4
Oro Valley	450	1	128	321	1	169	10	0	11
Marana	843	5	179	659	5	263	29	0	19
TOTAL	9,578	94	4,018	5,466	100	6,064	750	35	516

Pinal County	1,830	44	554	1,232	52	900	121	19	104
Casa Grande	898	12	248	638	12	364	42	4	25
Coolidge	142	1	43	98	1	78	8	0	12
Eloy	168	3	56	109	4	82	13	3	7
Florence	70	1	21	48	1	37	7	0	6
Kearny	1	0	1	0	0	1	0	0	0
Mammoth	1	0	1	0	0	1	0	0	0
Superior	0	0	0	0	0	0	0	0	0
Apache Junction	406	3	115	288	3	163	21	1	17
Maricopa	241	4	67	170	5	92	20	1	12
TOTAL	3,757	68	1,106	2,583	78	1,718	232	28	183

Santa Cruz County	238	2	58	178	2	89	20	1	12
Nogales	283	1	55	227	1	86	3	0	0
Patagonia	1	0	1	0	0	1	0	0	0
TOTAL	522	3	114	405	3	176	23	1	12

Yavapai County	1,344	38	434	872	44	632	85	11	57
Clarkdale	2	1	0	1	1	0	0	0	0
Cottonwood	269	2	75	192	2	104	20	0	9
Jerome	1	0	1	0	0	1	0	0	0
Prescott	764	0	219	545	0	308	31	0	12
Prescott Valley	477	3	136	338	3	205	28	2	23
Chino Valley	111	2	29	80	3	46	5	1	2
Camp Verde	129	0	45	84	0	68	14	0	10
Dewey-Humboldt	14	0	2	12	0	2	1	0	0
TOTAL	3,111	46	941	2,124	53	1,366	184	14	113

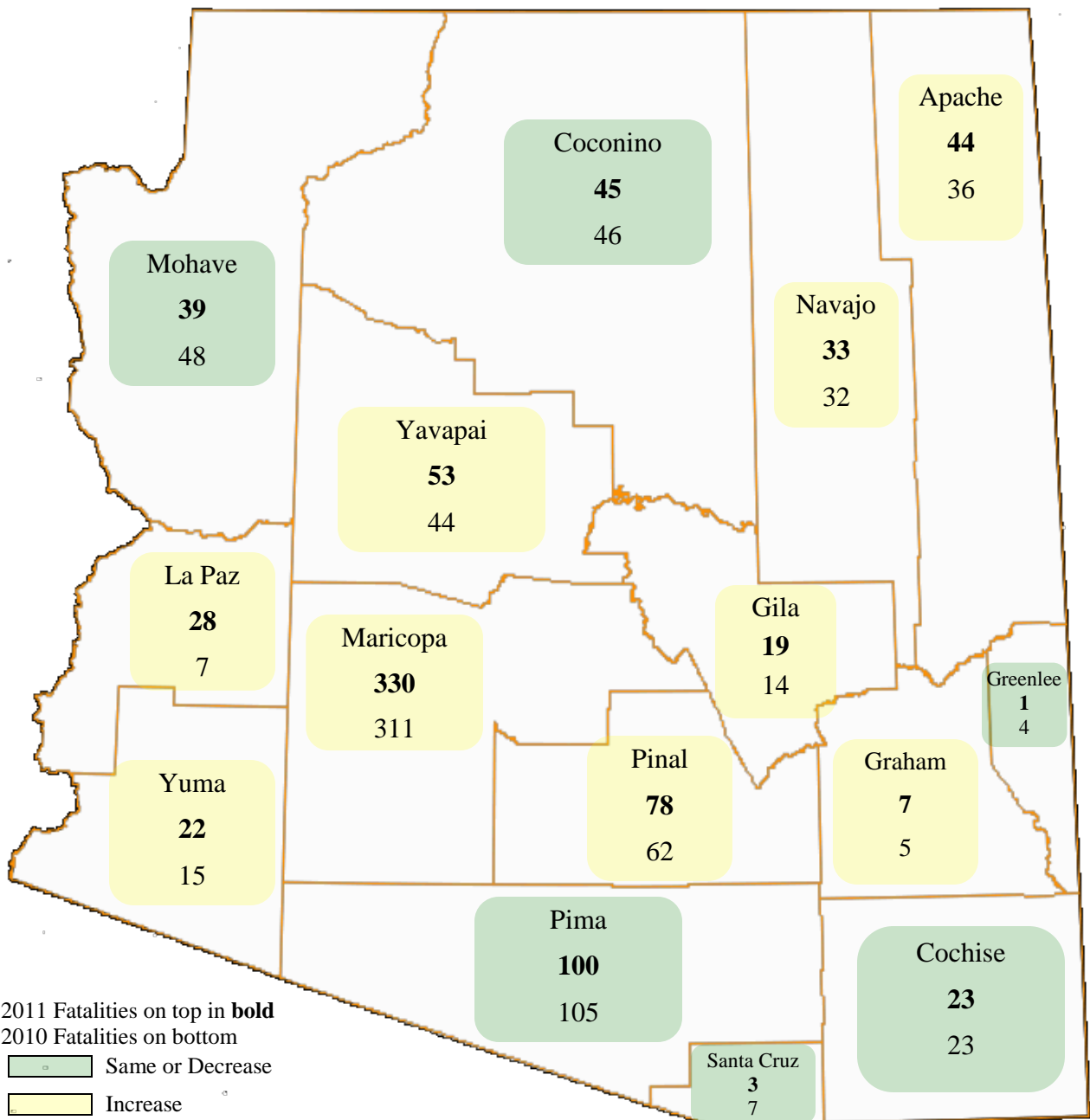
Table 2 - 5

Analysis by Jurisdiction

COUNTIES Cities	Number of Crashes				No. of Persons		Alcohol Related		
	Total	Fatal	Injury	PDO	Killed	Injured	Crashes	Killed	Injured
Yuma County	710	8	199	503	10	320	47	2	33
Somerton	26	1	4	21	1	5	3	1	0
Yuma	1,821	11	637	1,173	11	947	119	3	104
Wellton	8	0	2	6	0	2	0	0	0
San Luis	146	0	25	121	0	28	11	0	1
TOTAL	2,711	20	867	1,824	22	1,302	180	6	138

Some individual city data may be incomplete due to lack of timely reporting.
Totals within city and town jurisdictions include all state highways.

Total Fatalities by County for 2010 and 2011



Section 2: – Geographic Location

Chart 2 - 1

Urban and Rural Crashes by Day of Week

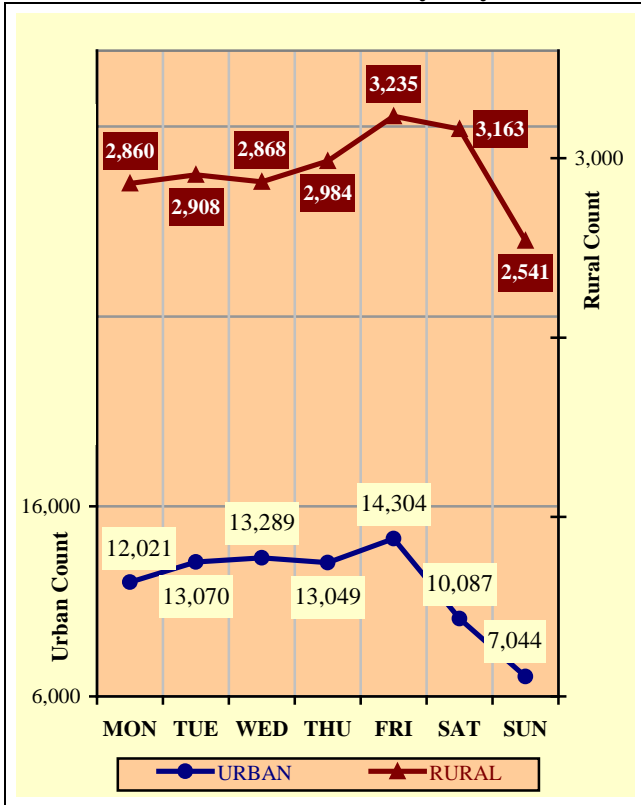


Chart 2 - 2

Urban and Rural Fatal Crashes by Day of Week

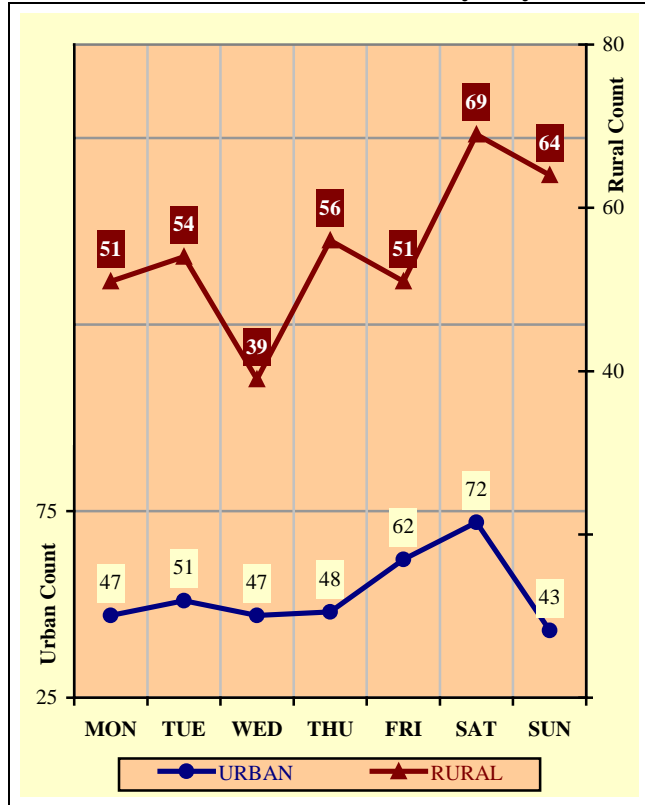
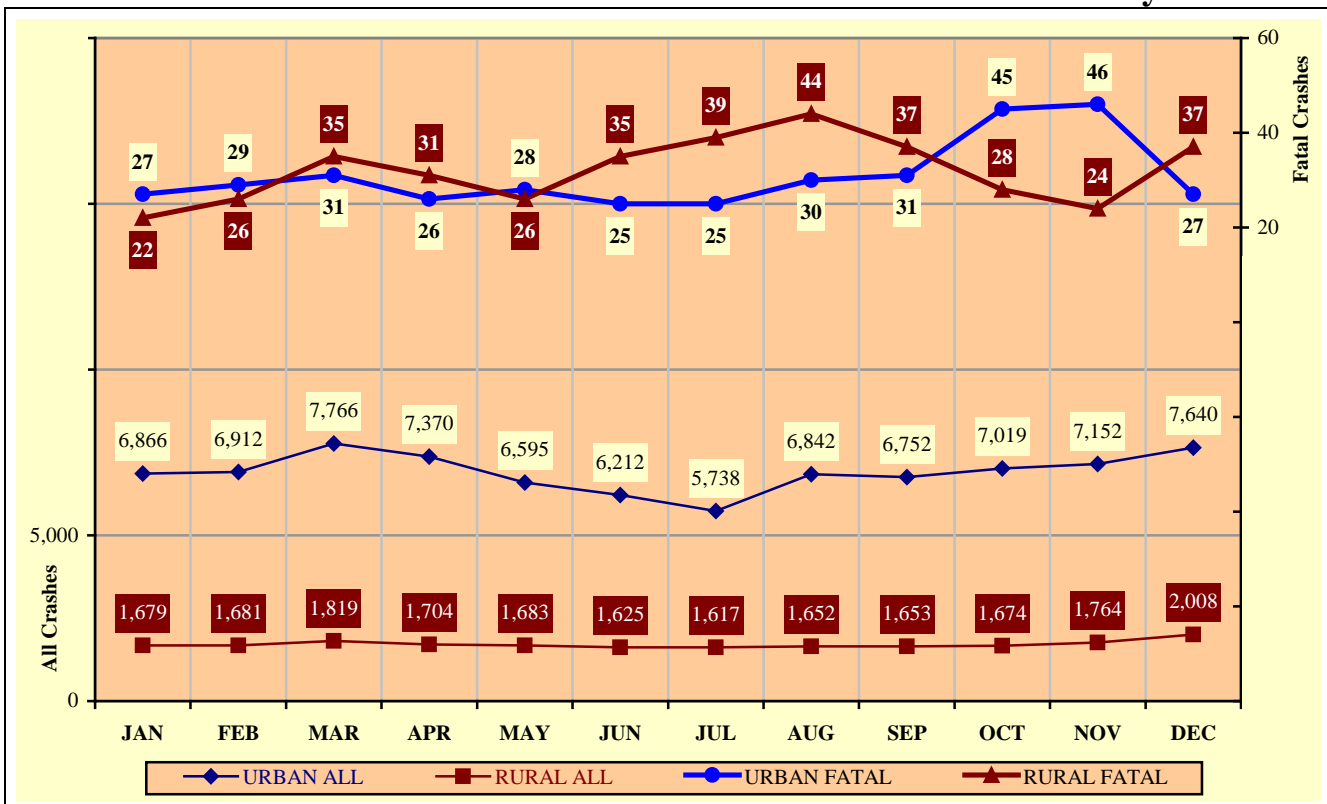
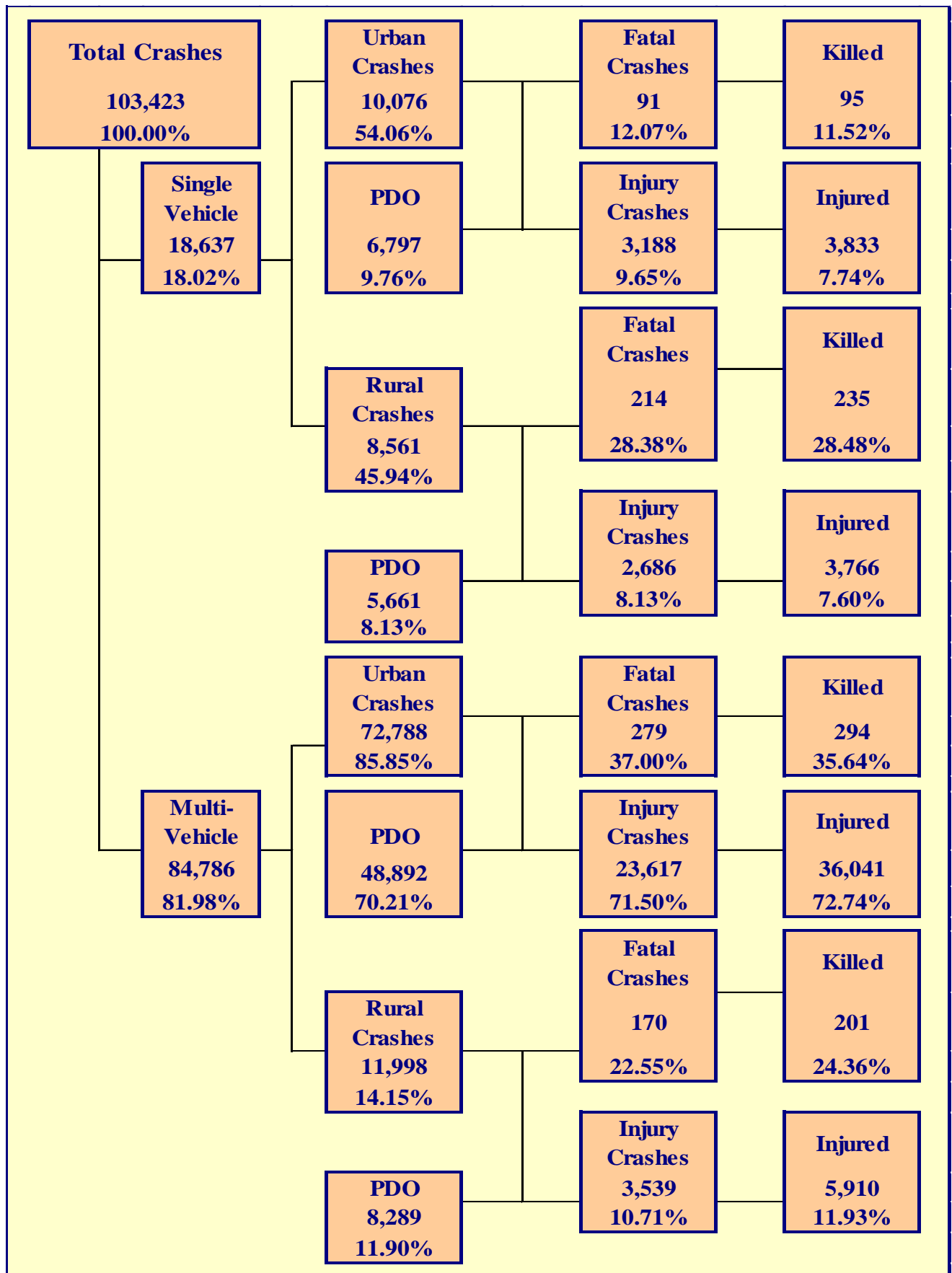


Chart 2 - 3

All Urban and Rural Crashes vs. Urban and Rural Fatal Crashes by Month





Section 3: – Crash Descriptions

Table 3 - 1

Manner of Collision in Multi-Vehicle Crashes

Manner of Collision Type	Number of Crashes							
	Total	Percent of Total Crashes	Fatal	Percent of Fatal Crashes	Injury	Percent of Injury Crashes	PDO	Percent of PDO Crashes
Angle	14,651	17.28%	76	16.93%	5,843	21.52%	8,732	15.27%
Left Turn	11,403	13.45%	40	8.91%	4,958	18.26%	6,405	11.20%
Rear End	38,888	45.87%	65	14.48%	11,890	43.78%	26,933	47.10%
Head-On	1,525	1.80%	54	12.03%	735	2.71%	736	1.29%
Sideswipe (same)	11,095	13.09%	15	3.34%	1,561	5.75%	9,519	16.65%
Sideswipe (opposite)	1,331	1.57%	6	1.34%	330	1.22%	995	1.74%
Rear to Side	942	1.11%	0	0.00%	64	0.24%	878	1.54%
Rear to Rear	313	0.37%	0	0.00%	60	0.22%	253	0.44%
Other	3,704	4.37%	190	42.32%	1,494	5.50%	2,020	3.53%
Unknown	934	1.10%	3	0.67%	221	0.81%	710	1.24%
TOTAL	84,786	100.00%	449	100.00%	27,156	100.00%	57,181	100.00%

Table 3 - 2

Lighting Conditions

Type of Lighting Conditions	Number of Crashes				Number of Persons	
	Total	Fatal	Injury	PDO	Killed	Injured
Daylight	73,970	348	23,714	49,908	374	35,503
Dawn	1,790	14	537	1,239	17	740
Dusk	2,948	29	947	1,972	32	1,441
Dark - Lighted	17,570	141	5,810	11,619	153	8,803
Dark - Not Lighted	6,146	163	1,798	4,185	184	2,685
Dark - Unknown Lighting	999	59	224	716	65	378
TOTAL	103,423	754	33,030	69,639	825	49,550

Table 3 - 3

Weather Conditions

Type of Weather Conditions	Number of Crashes				Number of Persons	
	Total	Fatal	Injury	PDO	Killed	Injured
Clear	90,826	557	29,215	61,054	606	43,800
Cloudy	7,439	76	2,482	4,881	88	3,742
Sleet/Hail	128	1	38	89	1	65
Rain	3,034	14	859	2,161	18	1,256
Snow	705	5	136	564	5	199
Severe Crosswinds	110	1	42	67	1	61
Blowing Sand, Soil, Dirt	193	2	74	117	2	140
Fog, Smog, Smoke	60	1	16	43	1	28
Blowing Snow	29	0	3	26	0	3
Other	75	0	22	53	0	31
Unknown	824	97	143	584	103	225
TOTAL	103,423	754	33,030	69,639	825	49,550

Table 3 - 4

Road Surface Conditions

Type of Road Surface Condition	Number of Drivers				Number of Persons	
	Total	In Fatal Crashes	In Injury Crashes	In PDO Crashes	Killed	Injured
Dry	183,647	974	60,063	122,610	677	46,703
Wet	7,458	33	2,189	5,236	28	1,776
Snow	974	2	188	784	2	155
Slush	172	1	41	130	1	45
Ice/Frost	557	4	135	418	3	143
Water (standing or moving)	86	0	36	50	0	42
Sand	69	1	37	31	1	38
Mud, Dirt, Gravel	610	9	235	366	10	295
Oil	36	0	17	19	0	15
Other	87	1	26	60	2	28
Unknown	2,653	113	504	2,036	101	310
TOTAL	196,349	1,138	63,471	131,740	825	49,550

Table 3 - 5

Roadway Grade

Type of Roadway Grade	Number of Drivers				Number of Persons	
	Total	In Fatal Crashes	In Injury Crashes	In PDO Crashes	Killed	Injured
Level	176,225	814	56,839	118,572	566	43,673
Downhill	7,539	101	2,581	4,857	91	2,410
Uphill	6,074	84	1,975	4,015	55	1,707
Hillcrest	421	14	150	257	8	156
Sag/Dip/Bottom	197	5	74	118	3	91
Unknown	5,893	120	1,852	3,921	102	1,513
TOTAL	196,349	1,138	63,471	131,740	825	49,550

Table 3 - 6

Roadway Alignment

Type of Roadway Alignment	Number of Drivers				Number of Persons	
	Total	In Fatal Crashes	In Injury Crashes	In PDO Crashes	Killed	Injured
Straight	155,461	850	48,459	106,152	574	37,231
Curve Left	4,911	96	1,574	3,241	85	1,621
Curve Right	5,201	74	1,526	3,601	63	1,468
Unknown	30,776	118	11,912	18,746	103	9,230
TOTAL	196,349	1,138	63,471	131,740	825	49,550

Section 3: – Crash Descriptions

Chart 3 - 1

All Crashes vs. Fatal Crashes by Time of Day - Weekdays

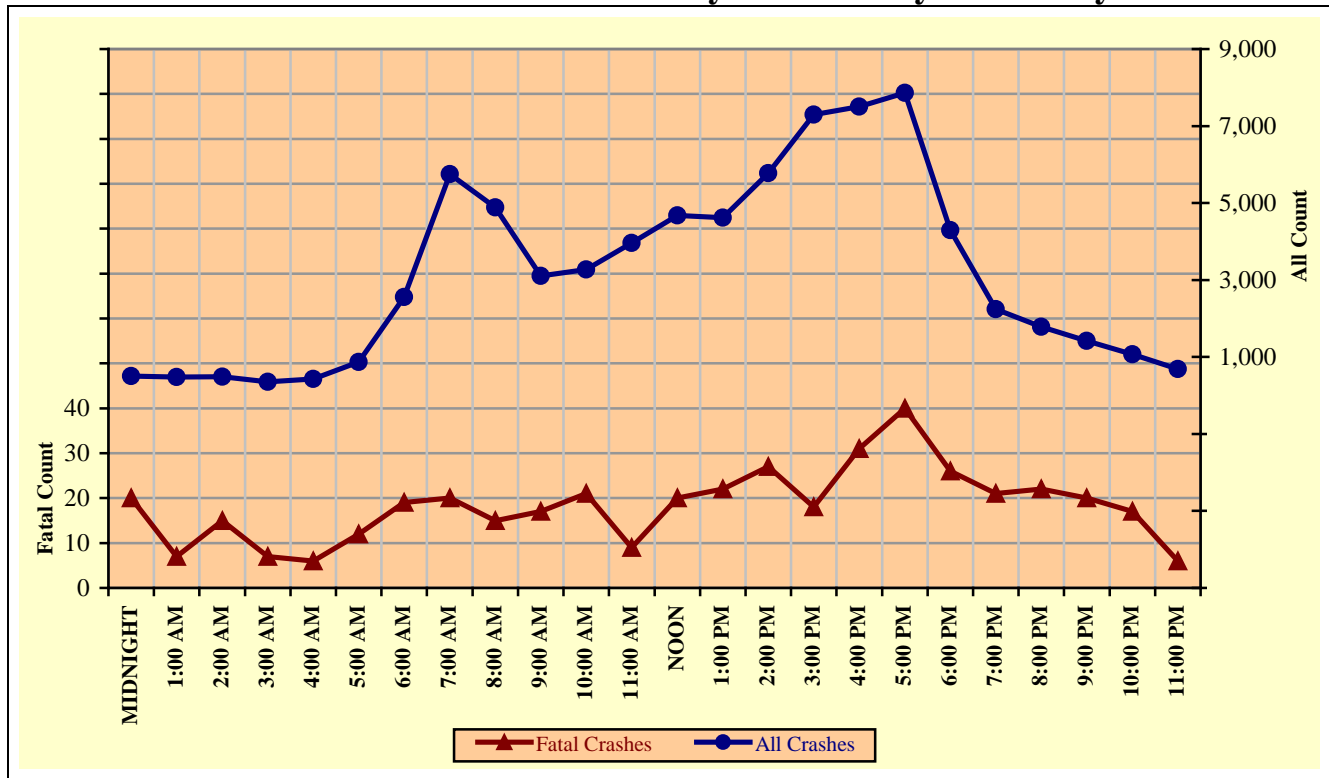


Chart 3 - 2

All Crashes vs. Fatal Crashes by Time of Day - Weekends

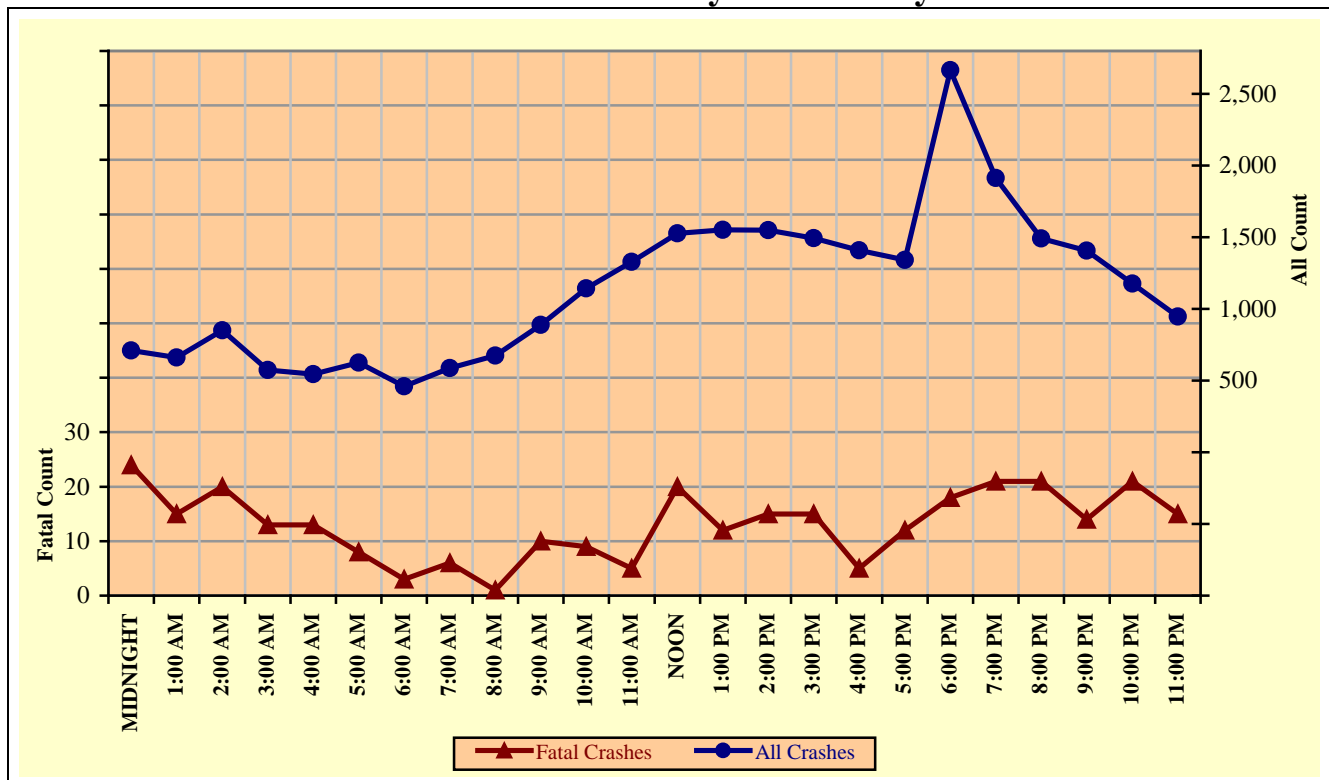


Chart 3 - 3

Crashes by Day of Week

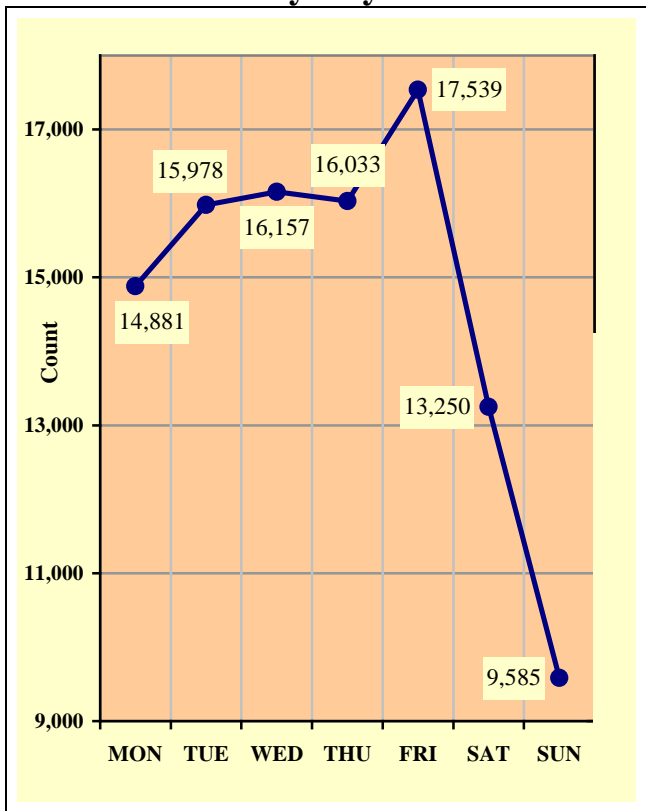


Chart 3 - 4

Fatal Crashes by Day of Week

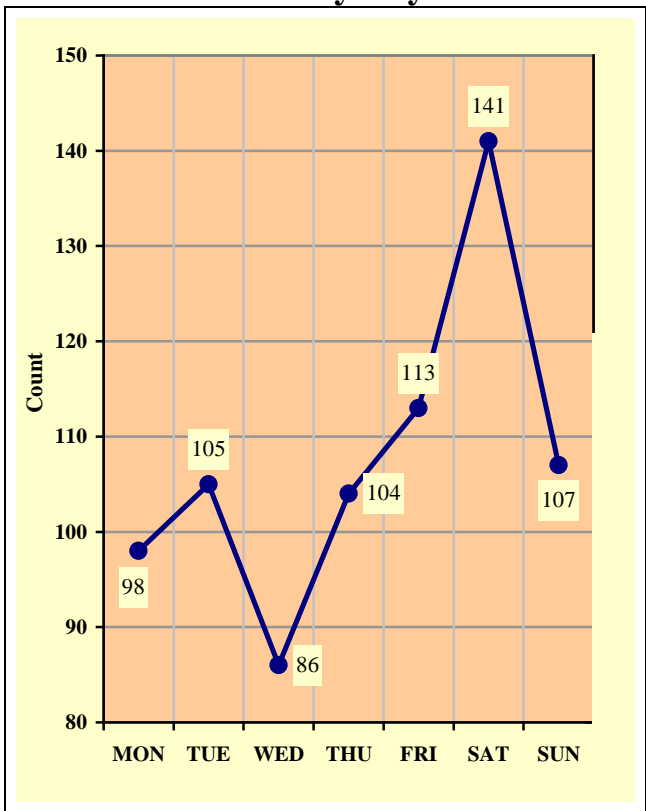
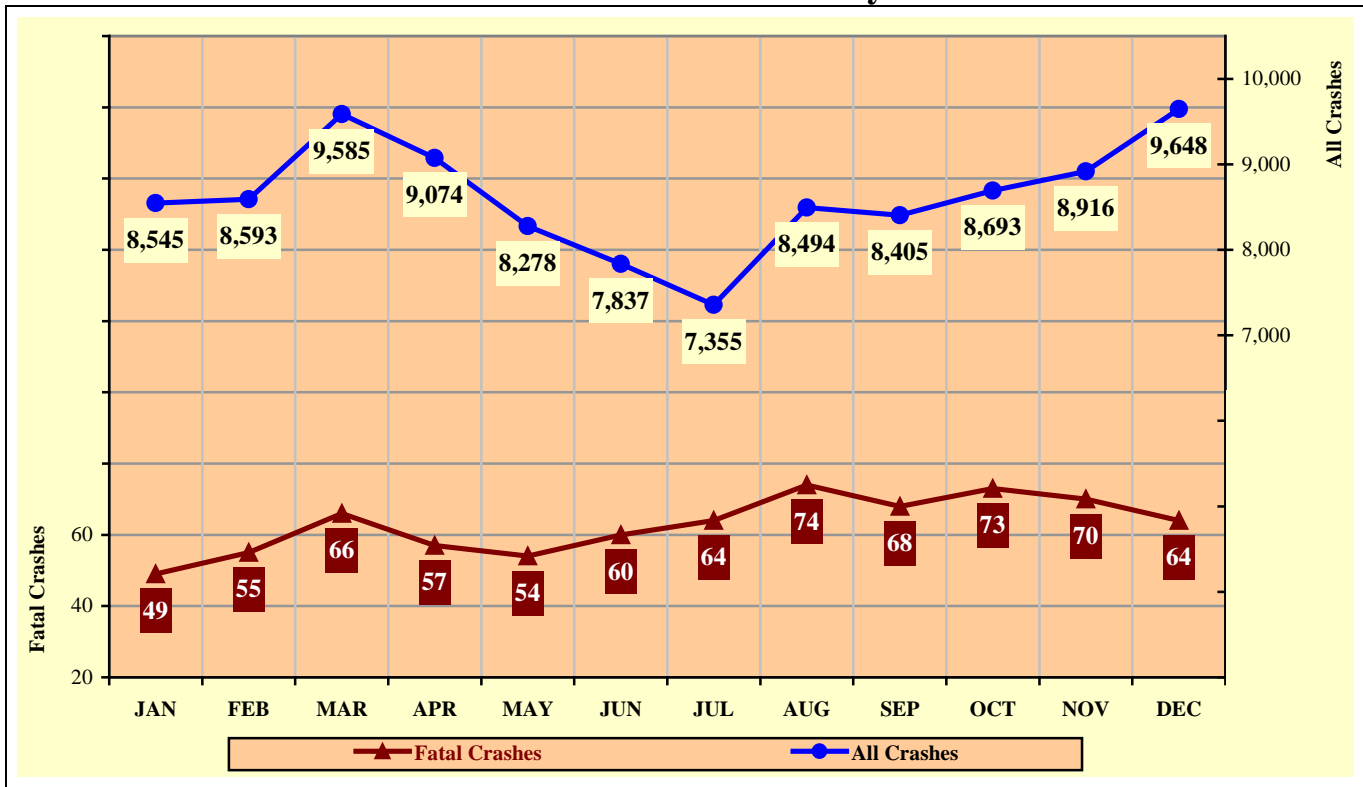


Chart 3 - 5

All Crashes vs. Fatal Crashes by Month



Section 3: – Crash Descriptions

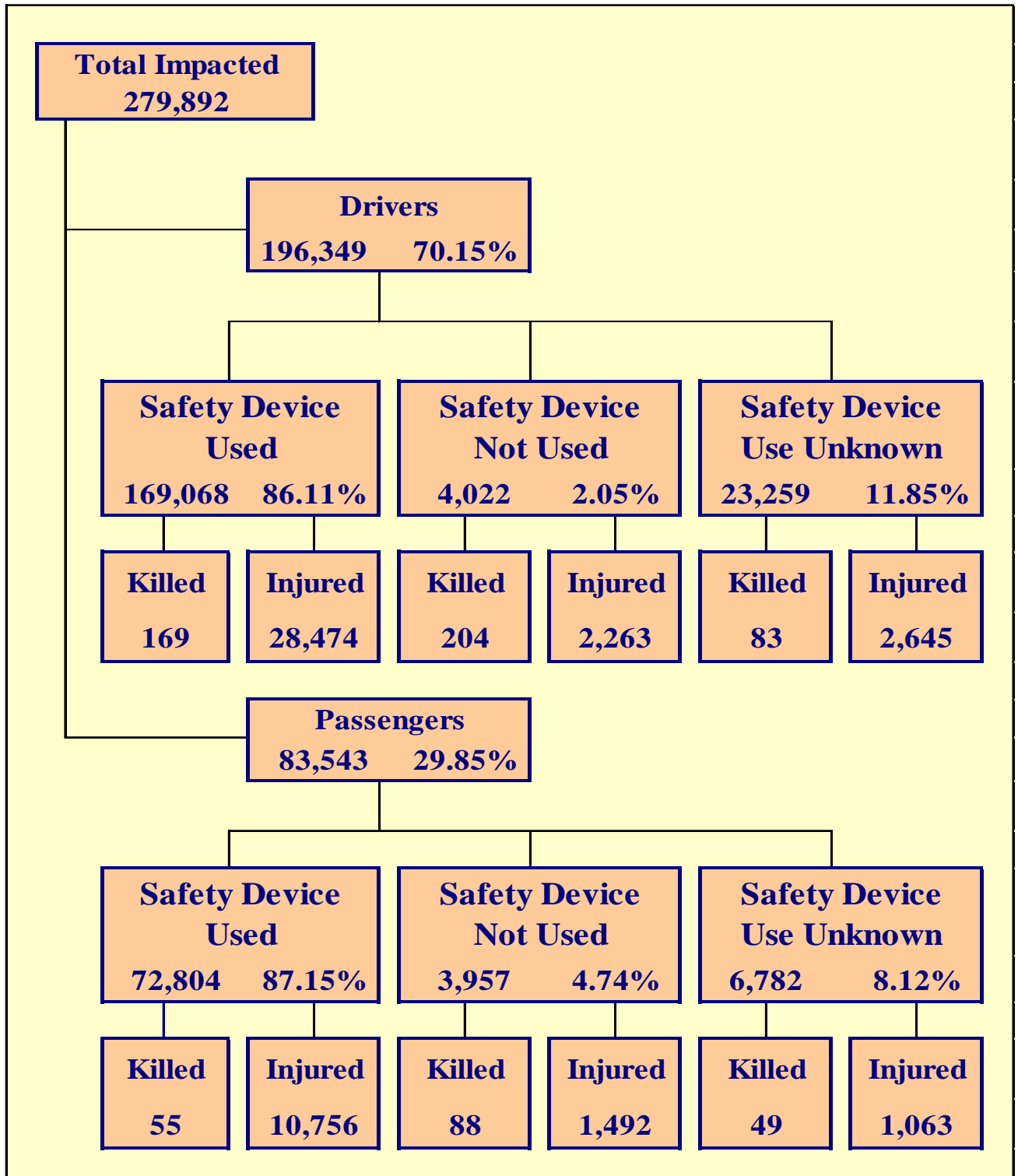
Table 3 - 7

Crashes by Hour and Day of Week

Hour Beginning	Total Crashes		Monday		Tuesday		Wednesday		Thursday		Friday		Saturday		Sunday		Weekdays		Weekends	
	All	Fatal	All	Fatal	All	Fatal	All	Fatal	All	Fatal	All	Fatal	All	Fatal	All	Fatal	All	Fatal	All	Fatal
MIDNIGHT	1,211	44	110	7	96	6	120	3	116	6	168	5	289	9	312	8	500	20	711	24
1:00 AM	1,137	22	116	0	93	2	89	1	126	4	167	0	268	10	278	5	475	7	662	15
2:00 AM	1,340	35	107	7	83	3	112	3	117	3	178	6	359	8	384	5	490	15	850	20
3:00 AM	928	20	101	2	82	2	65	0	99	3	108	2	233	8	240	3	354	7	574	13
4:00 AM	972	19	120	2	106	1	98	2	88	1	136	2	210	4	214	7	428	6	544	13
5:00 AM	1,492	20	216	4	227	5	209	3	229	1	201	3	195	2	215	2	866	12	626	8
6:00 AM	3,021	22	488	3	573	3	566	4	527	7	407	2	244	1	216	2	2,561	19	460	3
7:00 AM	6,339	26	1,132	8	1,271	3	1,228	2	1,169	5	952	2	333	3	254	3	5,752	20	587	6
8:00 AM	5,556	16	911	0	1,144	5	1,030	0	973	5	823	5	423	1	252	0	4,881	15	675	1
9:00 AM	3,993	27	592	3	674	6	654	3	594	2	591	3	559	6	329	4	3,105	17	888	10
10:00 AM	4,418	30	649	7	626	2	667	1	625	4	707	7	702	4	442	5	3,274	21	1,144	9
11:00 AM	5,294	14	757	3	779	2	744	3	771	0	914	1	810	3	519	2	3,965	9	1,329	5
NOON	6,206	40	878	7	878	6	922	2	898	1	1,103	4	863	8	664	12	4,679	20	1,527	20
1:00 PM	6,173	34	900	4	880	6	920	2	865	5	1,055	5	960	4	593	8	4,620	22	1,553	12
2:00 PM	7,328	42	1,053	3	1,102	9	1,190	5	1,097	6	1,336	4	927	8	623	7	5,778	27	1,550	15
3:00 PM	8,792	33	1,433	1	1,424	4	1,406	6	1,437	1	1,597	6	862	9	633	6	7,297	18	1,495	15
4:00 PM	8,915	36	1,357	7	1,490	6	1,477	7	1,582	7	1,601	4	840	4	568	1	7,507	31	1,408	5
5:00 PM	9,202	52	1,355	7	1,645	10	1,642	9	1,643	8	1,576	6	767	9	574	3	7,861	40	1,341	12
6:00 PM	6,964	44	922	3	1,061	5	1,173	12	1,142	6	1,260	6	793	6	613	6	4,298	26	2,666	18
7:00 PM	4,155	42	524	4	539	3	589	7	589	7	747	6	668	11	499	4	2,241	21	1,914	21
8:00 PM	3,276	43	405	6	457	8	463	3	459	5	566	11	554	6	372	4	1,784	22	1,492	21
9:00 PM	2,828	34	326	3	333	3	360	5	403	9	542	6	525	4	339	4	1,422	20	1,406	14
10:00 PM	2,249	38	256	5	263	3	255	3	299	6	448	9	479	8	249	4	1,073	17	1,176	21
11:00 PM	1,634	21	173	2	152	2	178	0	185	2	356	8	387	5	203	2	688	6	946	15
TOTAL	103,423	754	14,881	98	15,978	105	16,157	86	16,033	104	17,539	113	13,250	141	9,585	107	75,899	438	27,524	316

Crashes during Weekends accounted for 26.61% of all crashes and 41.91% of Fatal Crashes.

Crashes during Weekdays accounted for 73.39% of all crashes and 58.09% of Fatal Crashes.



Section 4: – Safety Devices

Table 4 - 1

Child Safety Device Usage (less than five years old)

Severity of Injury	Safety Device Used	Percent of Safety Device Used	Safety Device Not Used	Percent of Safety Device Not Used	Safety Device Use Unknown	Percent of Unknown
No Injury	9,623	89.35%	141	61.04%	341	66.34%
Unknown Injury	172	1.60%	11	4.76%	71	13.81%
Possible Injury	682	6.33%	36	15.58%	42	8.17%
Non-Incapacitating Injury	238	2.21%	29	12.55%	36	7.00%
Incapacitating Injury	52	0.48%	11	4.76%	17	3.31%
Fatal Injury	3	0.03%	3	1.30%	7	1.36%
TOTALS	10,770	100.00%	231	100.00%	514	100.00%

Table 4 - 2

Driver Safety Device Usage

Severity of Injury	Safety Device Used	Percent of Safety Device Used	Safety Device Not Used	Percent of Safety Device Not Used	Safety Device Use Unknown	Percent of Unknown
No Injury	138,135	81.70%	1,473	36.62%	10,525	45.25%
Unknown Injury	2,290	1.35%	82	2.04%	10,006	43.02%
Possible Injury	17,044	10.08%	598	14.87%	1,119	4.81%
Non-Incapacitating Injury	9,513	5.63%	1,131	28.12%	1,120	4.82%
Incapacitating Injury	1,917	1.13%	534	13.28%	406	1.75%
Fatal Injury	169	0.10%	204	5.07%	83	0.36%
TOTALS	169,068	100.00%	4,022	100.00%	23,259	100.00%

Table 4 - 3

Passenger Safety Device Usage

Severity of Injury	Safety Device Used	Percent of Safety Device Used	Safety Device Not Used	Percent of Safety Device Not Used	Safety Device Use Unknown	Percent of Unknown
No Injury	60,918	83.67%	2,232	56.41%	4,283	63.15%
Unknown Injury	1,075	1.48%	145	3.66%	1,387	20.45%
Possible Injury	6,750	9.27%	514	12.99%	506	7.46%
Non-Incapacitating Injury	3,368	4.63%	651	16.45%	371	5.47%
Incapacitating Injury	638	0.88%	327	8.26%	186	2.74%
Fatal Injury	55	0.08%	88	2.22%	49	0.72%
TOTALS	72,804	100.00%	3,957	100.00%	6,782	100.00%

Table 4 - 4

Driver Safety Device Usage by Gender

Gender of Driver	Number of Drivers							
	Safety Device Used	Percent of Safety Device Used	Safety Device Not Used	Percent of Safety Device Not Used	Safety Device Use Unknown	Percent of Unknown	Total	Percent of Total
Male	92,950	54.98%	2,874	71.46%	8,265	35.53%	104,089	53.01%
Female	75,956	44.93%	1,106	27.50%	4,039	17.37%	81,101	41.30%
Unknown	162	0.10%	42	1.04%	10,955	47.10%	11,159	5.68%
TOTAL	169,068	100.00%	4,022	100.00%	23,259	100.00%	196,349	100.00%

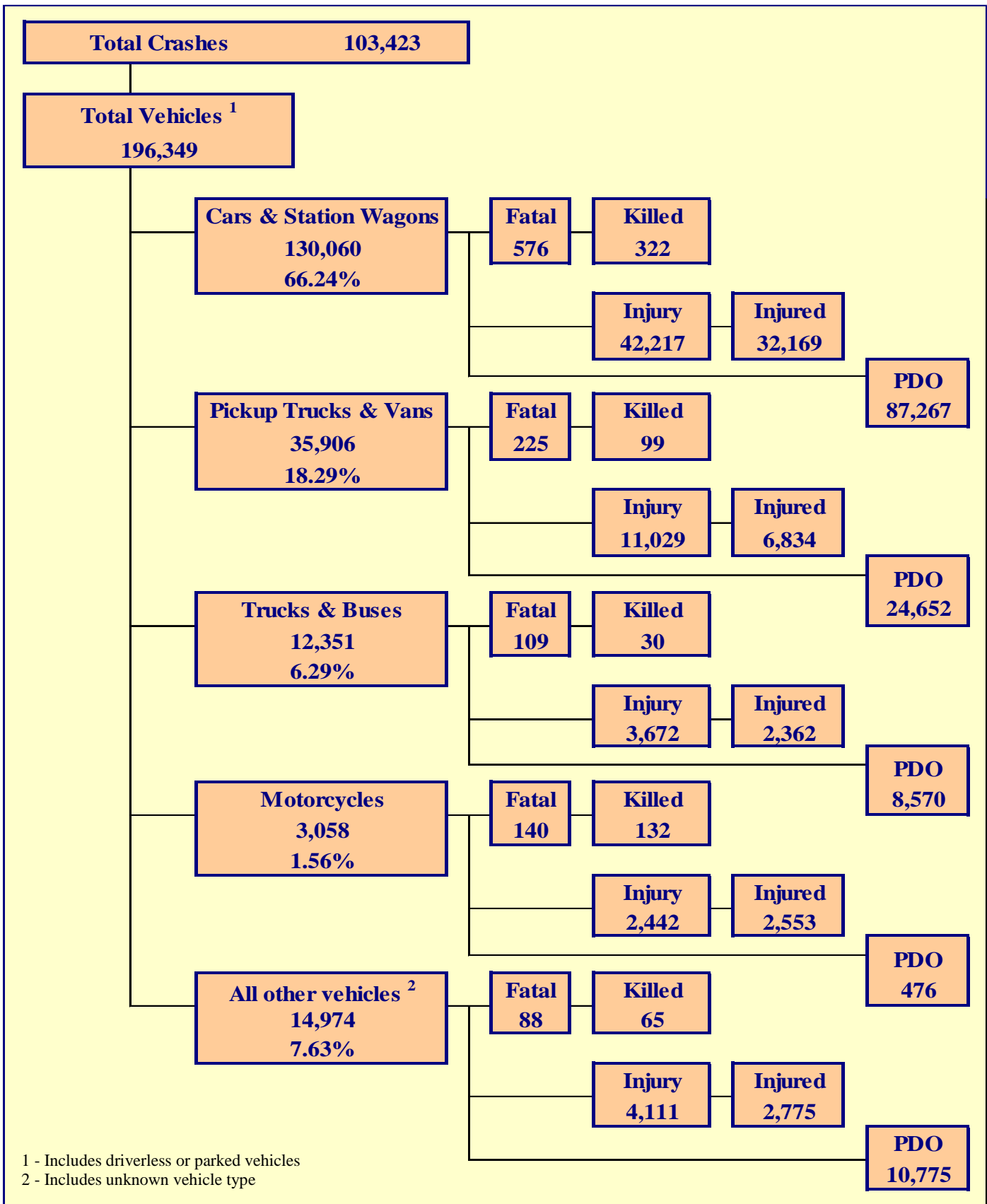
Table 4 - 5

Driver Safety Device Usage by Age

Driver Age Group	Number of Drivers							
	Safety Device Used	Percent of Safety Device Used	Safety Device Not Used	Percent of Safety Device Not Used	Safety Device Use Unknown	Percent of Unknown	Total	Percent of Total
15 & Under	221	0.13%	33	0.82%	37	0.16%	291	0.15%
16	2,411	1.43%	44	1.09%	144	0.62%	2,599	1.32%
17	3,746	2.22%	104	2.59%	201	0.86%	4,051	2.06%
18	5,063	2.99%	159	3.95%	310	1.33%	5,532	2.82%
19	5,363	3.17%	175	4.35%	391	1.68%	5,929	3.02%
20	5,131	3.03%	156	3.88%	360	1.55%	5,647	2.88%
21	5,049	2.99%	167	4.15%	373	1.60%	5,589	2.85%
22	4,662	2.76%	154	3.83%	333	1.43%	5,149	2.62%
23	4,348	2.57%	131	3.26%	336	1.44%	4,815	2.45%
24	4,194	2.48%	129	3.21%	309	1.33%	4,632	2.36%
25-34	36,484	21.58%	881	21.90%	2,457	10.56%	39,822	20.28%
35-44	30,340	17.95%	627	15.59%	1,835	7.89%	32,802	16.71%
45-54	26,360	15.59%	556	13.82%	1,633	7.02%	28,549	14.54%
55-64	18,850	11.15%	366	9.10%	1,081	4.65%	20,297	10.34%
65-74	9,773	5.78%	155	3.85%	515	2.21%	10,443	5.32%
75 & Older	5,844	3.46%	85	2.11%	301	1.29%	6,230	3.17%
Unknown	1,229	0.73%	100	2.49%	12,643	54.36%	13,972	7.12%
TOTAL	169,068	100.00%	4,022	100.00%	23,259	100.00%	196,349	100.00%

Section 5

Motor Vehicle and Driver Descriptions



Section 5: – Motor Vehicle and Driver Descriptions

Table 5 - 1

Arizona Motor Vehicle Registrations

Privately Owned Vehicles	4,265,815
Commercial Vehicles	421,328
Buses and Taxis	4,091
Motorcycles	163,381
Mopeds	399
TOTAL	4,855,014
Source: MVD - MV988 MV630419, Currently Registered Vehicles by County Listing, dated 12/31/2011.	

Table 5 - 2

Motor Vehicle Crash Involvement by Vehicle Type

Motor Vehicle Type	Number of Vehicles				
	Total	Percent of Total	In Fatal Crashes	In Injury Crashes	In PDO Crashes
Passenger Cars (Sedans, Convertibles, etc.)	92,472	47.096%	372	29,915	62,185
Station Wagons	37,588	19.143%	204	12,302	25,082
Pickup Trucks	34,218	17.427%	212	10,546	23,460
Vans	1,688	0.860%	13	483	1,192
Truck Tractor (with or without Semi-Trailer)	2,587	1.318%	55	640	1,892
Concrete Mixer Trucks	36	0.018%	0	11	25
Dump Trucks	149	0.076%	2	38	109
Garbage Trucks	132	0.067%	0	24	108
Tanker Trucks	36	0.018%	0	11	25
Wrecker or Tow Trucks	132	0.067%	2	34	96
Other Truck Combinations	8,227	4.190%	41	2,692	5,494
School Bus	184	0.094%	3	38	143
Commercial or Non-Commercial Bus	868	0.442%	6	184	678
Motorcycle (two or three wheel)	3,058	1.557%	140	2,442	476
All Terrain Vehicle or Cycle	141	0.072%	14	100	27
Moped	16	0.008%	4	11	1
Recreational Vehicle	94	0.048%	2	16	76
Motor Home or House Car	164	0.084%	1	31	132
Fire Trucks	50	0.025%	0	6	44
Ambulances	69	0.035%	0	19	50
Other Types Of Vehicles	337	0.172%	5	96	236
Vehicle Type Unknown	14,103	7.183%	62	3,832	10,209
TOTAL	196,349	100.00%	1,138	63,471	131,740

Section 5: – Motor Vehicle and Driver Descriptions

Table 5 - 3

Hit and Run Drivers Involved in Crashes

Hit and Run	Number of Crashes				Number of Persons	
	Total	Fatal	Injury	PDO	Killed	Injured
Yes	11,413	49	2,215	9,149	49	3,006
No	92,010	705	30,815	60,490	776	46,544
TOTAL	103,423	754	33,030	69,639	825	49,550

Table 5 - 4

Gender of Drivers Involved in Crashes

Gender of Driver	Number of Drivers							
	Total	Percent of Total	In Fatal Crashes	Percent of Fatal	In Injury Crashes	Percent of Injury	In PDO Crashes	Percent of PDO
Male	104,089	53.01%	787	69.16%	33,839	53.31%	69,463	52.73%
Female	81,101	41.30%	281	24.69%	27,901	43.96%	52,919	40.17%
Unknown	11,159	5.68%	70	6.15%	1,731	2.73%	9,358	7.10%
TOTAL	196,349	100.00%	1,138	100.00%	63,471	100.00%	131,740	100.00%

Table 5 - 5

License Status of Drivers Involved in Crashes

License Status of Driver	Number of Drivers							
	Total	Percent of Total	In Fatal Crashes	Percent of Fatal	In Injury Crashes	Percent of Injury	In PDO Crashes	Percent of PDO
Arizona License	155,130	79.01%	848	74.52%	52,046	82.00%	102,236	77.60%
All Others*	41,219	20.99%	290	25.48%	11,425	18.00%	29,504	22.40%
TOTAL	196,349	100.00%	1,138	100.00%	63,471	100.00%	131,740	100.00%

*Includes drivers that have a suspended, revoked, out-of-state or country license, as well as drivers with no license or unknown license type

Table 5 - 6

Passengers Killed and Injured by Age and Gender

Age of Passenger	Passengers Killed			Passengers Injured			
	Total	Male	Female	Total	Male	Female	Gender Unknown
0-4	11	8	3	882	431	451	0
5-9	7	6	1	1,063	505	558	0
10-14	11	7	4	1,155	501	654	0
15-19	27	18	9	2,056	821	1,235	0
20-24	19	14	5	1,457	614	843	0
25-34	34	19	15	1,755	714	1,041	0
35-44	19	9	10	1,221	394	827	0
45-54	19	6	13	1,136	357	779	0
55-64	19	5	14	907	220	687	0
65-74	8	3	5	599	153	446	0
75 & Older	18	5	13	468	126	342	0
Unknown	0	0	0	612	228	336	48
TOTAL	192	100	92	13,311	5,064	8,199	48

Section 5: – Motor Vehicle and Driver Descriptions

Table 5 - 7

Drivers and Passengers Killed and Injured by Vehicle Type

Motor Vehicle Type	Number of Drivers		Number of Passengers	
	Killed	Injured	Killed	Injured
Passenger Cars (Sedans, Convertibles, etc.)	134	16,761	56	6,299
Station Wagons	72	6,134	60	2,975
Pickup Trucks	70	4,591	27	1,899
Vans	1	203	1	141
Truck Tractor (with or without Semi-Trailer)	10	179	3	56
Concrete Mixer Trucks	0	6	0	0
Dump Trucks	0	8	0	5
Garbage Trucks	0	8	0	0
Tanker Trucks	0	4	0	0
Wrecker or Tow Trucks	0	7	0	1
Other Truck Combinations	6	1,152	9	727
School Bus	0	9	0	35
Commercial or Non-Commercial Bus	2	24	0	141
Motorcycle (two or three wheel)	116	2,384	16	169
All Terrain Vehicle or Cycle	11	93	3	41
Moped	4	9	0	0
Recreational Vehicle	0	6	0	3
Motor Home or House Car	0	5	0	11
Fire Trucks	0	2	0	0
Ambulances	0	4	0	12
Other Types Of Vehicles	3	56	0	22
Vehicle Type Unknown	27	1,737	17	774
TOTAL	456	33,382	192	13,311

Table 5 - 8

Drivers Killed and Injured by Age and Gender

Age of Driver	Drivers Killed			Drivers Injured			Gender Unknown
	Total	Male	Female	Total	Male	Female	
0-4	0	0	0	1	1	0	0
5-9	0	0	0	2	1	1	0
10-14	0	0	0	25	19	6	0
15-19	29	24	5	2,913	1,418	1,495	0
20-24	55	44	11	4,736	2,308	2,428	0
25-34	86	63	23	7,184	3,499	3,685	0
35-44	65	48	17	5,911	2,914	2,997	0
45-54	65	57	8	5,411	2,737	2,674	0
55-64	75	59	16	3,881	1,974	1,907	0
65-74	40	30	10	1,921	991	930	0
75 & Older	41	30	11	1,194	605	589	0
Unknown	0	0	0	203	119	50	34
TOTAL	456	355	101	33,382	16,586	16,762	34

Section 5: – Motor Vehicle and Driver Descriptions

Table 5 - 9

Licensed Drivers in Arizona by Age

Driver Age Group	Male Number	Percent of Male	Female Number	Percent of Female	Total Number	Percent of Total	Cumulative Percent
16	9,962	0.43%	9,643	0.42%	19,605	0.42%	0.42%
17	18,246	0.78%	17,324	0.75%	35,570	0.77%	1.19%
18	26,452	1.13%	24,168	1.05%	50,620	1.09%	2.28%
19	31,965	1.37%	29,406	1.28%	61,371	1.32%	3.61%
20	34,356	1.47%	32,548	1.41%	66,904	1.44%	5.05%
21	37,154	1.59%	35,676	1.55%	72,830	1.57%	6.62%
22	37,673	1.62%	36,176	1.57%	73,849	1.59%	8.22%
23	38,139	1.64%	37,479	1.63%	75,618	1.63%	9.85%
24	38,345	1.64%	37,640	1.63%	75,985	1.64%	29.94%
25-34	430,321	18.46%	424,718	18.44%	855,039	18.45%	29.94%
35-44	452,238	19.40%	421,534	18.30%	873,772	18.85%	48.79%
45-54	444,722	19.08%	434,440	18.86%	879,162	18.97%	67.76%
55-64	379,613	16.28%	394,954	17.15%	774,567	16.71%	84.47%
65-74	216,890	9.30%	226,122	9.82%	443,012	9.56%	94.03%
75 & older	135,113	5.80%	141,388	6.14%	276,501	5.97%	100.00%
TOTALS	2,331,189	100.00%	2,303,216	100.00%	4,634,405	100.00%	100.00%

Source: MVD - MV708 MV650653-1, Point-in-Time Driver Credential Report/All Driver Licenses by Age, Gender, & Class (page 19), dated 1/3/2012.

Table 5 - 10

Driver Involvement by Age

Driver Age Group	Number of Drivers							
	Total	Percent of Total	In Fatal Crashes	Percent of Fatal	In Injury Crashes	Percent of Injury	In PDO Crashes	Percent of PDO
15 & Under	291	0.15%	2	0.18%	101	0.16%	188	0.14%
16	2,599	1.32%	12	1.05%	790	1.24%	1,797	1.36%
17	4,051	2.06%	19	1.67%	1,204	1.90%	2,828	2.15%
18	5,532	2.82%	24	2.11%	1,741	2.74%	3,767	2.86%
19	5,929	3.02%	28	2.46%	2,018	3.18%	3,883	2.95%
20	5,647	2.88%	29	2.55%	1,885	2.97%	3,733	2.83%
21	5,589	2.85%	28	2.46%	1,877	2.96%	3,684	2.80%
22	5,149	2.62%	31	2.72%	1,742	2.74%	3,376	2.56%
23	4,815	2.45%	25	2.20%	1,625	2.56%	3,165	2.40%
24	4,632	2.36%	26	2.28%	1,545	2.43%	3,061	2.32%
25-34	39,822	20.28%	206	18.10%	13,272	20.91%	26,344	20.00%
35-44	32,802	16.71%	168	14.76%	10,923	17.21%	21,711	16.48%
45-54	28,549	14.54%	171	15.03%	9,707	15.29%	18,671	14.17%
55-64	20,297	10.34%	145	12.74%	6,940	10.93%	13,212	10.03%
65-74	10,443	5.32%	86	7.56%	3,521	5.55%	6,836	5.19%
75 & Older	6,230	3.17%	64	5.62%	2,098	3.31%	4,068	3.09%
Unknown	13,972	7.12%	74	6.50%	2,482	3.91%	11,416	8.67%
TOTAL	196,349	100.00%	1,138	100.00%	63,471	100.00%	131,740	100.00%

Section 5: – Motor Vehicle and Driver Descriptions

Table 5 - 11

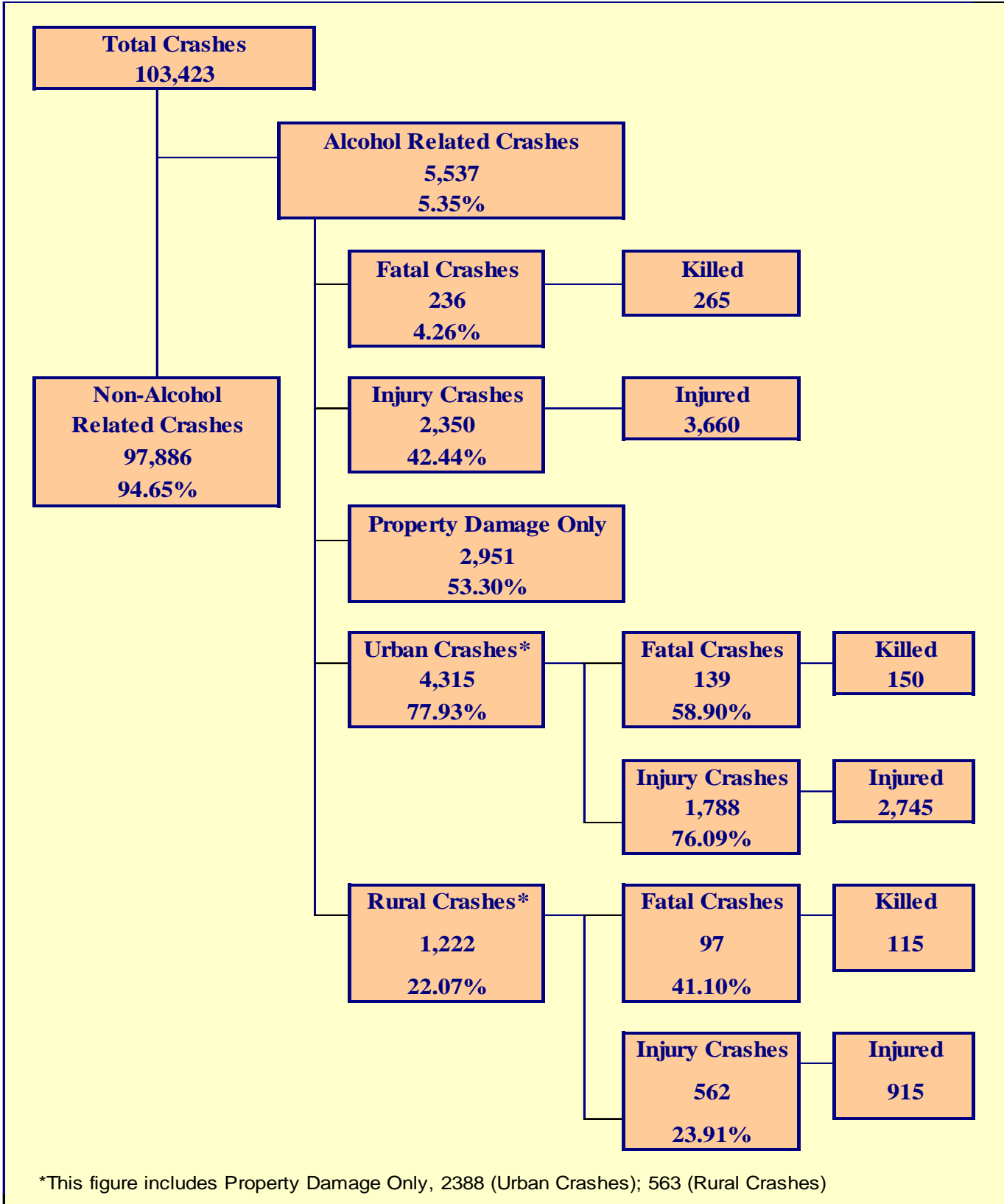
Driver Violations

Type of Violation or Behavior	Number of Drivers							
	Total	Percent of Total	In Fatal Crashes	Percent of Fatal	In Injury Crashes	Percent of Injury	In PDO Crashes	Percent of PDO
No Improper Action	94,658	48.21%	450	39.54%	31,216	49.18%	62,992	47.82%
Speed too Fast for Conditions	33,971	17.30%	147	12.92%	11,441	18.03%	22,383	16.99%
Exceeded Lawful Speed	976	0.50%	48	4.22%	417	0.66%	511	0.39%
Failed to Yield Right-Of-Way	7,705	3.92%	59	5.18%	3,240	5.10%	4,406	3.34%
Followed Too Closely	4,781	2.43%	3	0.26%	1,227	1.93%	3,551	2.70%
Ran Stop Sign	1,098	0.56%	16	1.41%	470	0.74%	612	0.46%
Disregarded Traffic Signal	4,562	2.32%	34	2.99%	2,213	3.49%	2,315	1.76%
Made Improper Turn	6,112	3.11%	8	0.70%	1,874	2.95%	4,230	3.21%
Drove in Opposing Lane	1,222	0.62%	54	4.75%	504	0.79%	664	0.50%
Knowingly Operated with Faulty or Missing Equipment	256	0.13%	1	0.09%	78	0.12%	177	0.13%
Required Motorcycle Safety Equipment Not Used	17	0.01%	1	0.09%	15	0.02%	1	0.00%
Passed in No-Passing Zone	110	0.06%	3	0.26%	25	0.04%	82	0.06%
Unsafe Lane Change	5,813	2.96%	8	0.70%	1,014	1.60%	4,791	3.64%
Failed to Keep in Proper Lane	3,246	1.65%	57	5.01%	887	1.40%	2,302	1.75%
Disregarded Pavement Markings	202	0.10%	2	0.18%	57	0.09%	143	0.11%
Other Unsafe Passing	618	0.31%	5	0.44%	128	0.20%	485	0.37%
Inattention/Distraction	11,903	6.06%	27	2.37%	3,431	5.41%	8,445	6.41%
Electronic Communications Device	143	0.07%	0	0.00%	48	0.08%	95	0.07%
Other	7,148	3.64%	26	2.28%	2,233	3.52%	4,889	3.71%
Unknown	11,808	6.01%	189	16.61%	2,953	4.65%	8,666	6.58%
TOTAL	196,349	100.00%	1,138	100.00%	63,471	100.00%	131,740	100.00%

Table 5 - 12

Driver Physical Condition

Type of Condition	Number of Drivers							
	Total	Percent of Total	In Fatal Crashes	Percent of Fatal	In Injury Crashes	Percent of Injury	In PDO Crashes	Percent of PDO
No Apparent Influence	172,376	87.79%	602	52.90%	56,081	88.36%	115,693	87.82%
Had Been Drinking	5,324	2.71%	184	16.17%	2,198	3.46%	2,942	2.23%
Appeared to be Under the Influence of Drugs*	680	0.35%	40	3.51%	310	0.49%	330	0.25%
Medications	327	0.17%	5	0.44%	173	0.27%	149	0.11%
Illness	660	0.34%	5	0.44%	344	0.54%	311	0.24%
Physical Impairment	208	0.11%	1	0.09%	95	0.15%	112	0.09%
Fell Asleep or Fatigued	1,299	0.66%	9	0.79%	605	0.95%	685	0.52%
Other	1,112	0.57%	18	1.58%	311	0.49%	783	0.59%
Unknown	14,363	7.32%	274	24.08%	3,354	5.28%	10,735	8.15%
TOTAL	196,349	100.00%	1,138	100.00%	63,471	100.00%	131,740	100.00%
*Illegal drugs or narcotics								



The statistics in the Alcohol Related section represent those crashes where the investigating officer indicated that a driver, pedestrian, or pedalcyclist had been drinking an alcoholic beverage and may or may not be substantiated by a blood or breath test. No assumption is to be made that the person was legally intoxicated (blood alcohol content of 0.08% or higher) at the time of the crash.

Table 6 - 1

Economic Loss Due to Alcohol Related Crashes in Arizona for 2011

Fatalities	\$381,123,000
Incapacitating Injuries	\$47,432,448
Non-Incapacitating Injuries	\$33,686,826
Possible Injuries	\$19,367,964
Property Damage Only	\$26,789,178
TOTAL	\$508,399,416

Refer to note on Page 4 for Economic Loss Estimates

Table 6 - 2

Alcohol Related Crash History

Year	Alcohol Related Crashes	Percent of all Crashes	Persons Killed	Percent of all Fatalities	Persons Injured	Percent of all Injuries
2007	7,938	5.62%	397	37.07%	5,532	8.37%
2008	6,878	5.71%	355	37.85%	4,834	8.55%
2009	5,899	5.51%	269	33.37%	4,178	8.23%
2010	5,571	5.22%	255	33.60%	3,785	7.51%
2011	5,537	5.35%	265	32.12%	3,660	7.39%

Table 6 - 3

Manner of Collision in Alcohol Related Crashes

Manner of Collision Type	Number of Crashes							
	Total	Percent of All Crashes	Fatal	Percent of Fatal Crashes	Injury	Percent of Injury Crashes	PDO	Percent of PDO Crashes
Angle	499	16.09%	23	16.20%	255	18.89%	221	13.73%
Left Turn	334	10.77%	3	2.11%	182	13.48%	149	9.25%
Rear End	1,269	40.91%	19	13.38%	514	38.07%	736	45.71%
Head-On	209	6.74%	19	13.38%	103	7.63%	87	5.40%
Sideswipe (same)	312	10.06%	5	3.52%	86	6.37%	221	13.73%
Sideswipe (opposite)	115	3.71%	0	0.00%	31	2.30%	84	5.22%
Rear to Side	28	0.90%	0	0.00%	6	0.44%	22	1.37%
Rear to Rear	11	0.35%	0	0.00%	1	0.07%	10	0.62%
Other	300	9.67%	73	51.41%	156	11.56%	71	4.41%
Unknown	25	0.81%	0	0.00%	16	1.19%	9	0.56%
TOTAL	3,102	100.00%	142	100.00%	1,350	100.00%	1,610	100.00%

Note: Includes only multi-vehicle alcohol related crashes

Section 6: – Alcohol Related Crashes

Table 6 - 4

Alcohol Related Crashes by First Harmful Event

First Harmful Event Type	Number of Crashes				Number of Persons	
	Total	Fatal	Injury	PDO	Killed	Injured
Collision with Motor Vehicle in Transport	2,134	66	905	1,163	87	1,757
Overtaking	308	47	202	59	49	325
Collision with Pedestrian	205	64	129	12	64	152
Collision with Pedalcyclist	64	5	52	7	5	54
Collision with Animal	7	0	1	6	0	1
Collision with Fixed Object	1,914	48	701	1,165	54	862
Collision with Non-fixed Object*	361	3	99	259	3	126
Vehicle Fire or Explosion	1	0	1	0	0	5
Other Non-collision**	82	3	47	32	3	64
Unknown	461	0	213	248	0	314
TOTAL	5,537	236	2,350	2,951	265	3,660
*Includes Collision with Parked Vehicles, Trains, Railway Vehicles, and Work Zone Equipment						
**Includes Vehicle Immersion, Jackknife, and Cargo Loss or Shift						

Table 6 - 5

Alcohol Related Crashes by Vehicle Type

Motor Vehicle Type	Number of Vehicles				
	Total	Percent of Total	In Fatal Crashes	In Injury Crashes	In PDO Crashes
Passenger Cars (Sedans, Convertibles, etc.)	2,566	48.197%	66	1,003	1,497
Station Wagons	951	17.863%	36	385	530
Pickup Trucks	1,155	21.694%	38	472	645
Vans	20	0.376%	0	8	12
Truck Tractor (with or without Semi-Trailer)	5	0.094%	1	1	3
Concrete Mixer Trucks	0	0.000%	0	0	0
Dump Trucks	2	0.038%	0	0	2
Garbage Trucks	0	0.000%	0	0	0
Tanker Trucks	0	0.000%	0	0	0
Wrecker or Tow Trucks	0	0.000%	0	0	0
Other Truck Combinations	120	2.254%	2	45	73
School Bus	0	0.000%	0	0	0
Commercial or Non-Commercial Bus	0	0.000%	0	0	0
Motorcycle (two or three wheel)	190	3.569%	33	147	10
All Terrain Vehicle or Cycle	19	0.357%	4	14	1
Moped	1	0.019%	1	0	0
Recreational Vehicle	0	0.000%	0	0	0
Motor Home or House Car	2	0.038%	0	0	2
Fire Trucks	0	0.000%	0	0	0
Ambulances	0	0.000%	0	0	0
Other Types Of Vehicles	4	0.075%	0	4	0
Vehicle Type Unknown	289	5.428%	3	119	167
TOTAL	5,324	100.00%	184	2,198	2,942

Table 6 - 6

Lighting Conditions in Alcohol Related Crashes

Type of Lighting Conditions	Number of Crashes				Number of Persons	
	Total	Fatal	Injury	PDO	Killed	Injured
Daylight	1,534	71	642	821	78	1,048
Dawn	121	1	52	68	1	83
Dusk	151	10	72	69	12	115
Dark - Lighted	2,770	73	1,158	1,539	83	1,737
Dark - Not Lighted	866	70	392	404	78	594
Dark - Unknown Lighting	95	11	34	50	13	83
TOTAL	5,537	236	2,350	2,951	265	3,660

Table 6 - 7

Road Surface Conditions in Alcohol Related Crashes

Type of Road Surface Condition	Number of Drivers				Number of Persons	
	Total	In Fatal Crashes	In Injury Crashes	In PDO Crashes	Killed	Injured
Dry	4,958	163	2,056	2,739	234	3,423
Wet	237	7	97	133	12	153
Snow	11	0	3	8	0	3
Slush	2	0	1	1	0	1
Ice/Frost	13	0	4	9	0	5
Water (standing or moving)	3	0	1	2	0	2
Sand	6	0	3	3	0	4
Mud, Dirt, Gravel	60	2	24	34	2	32
Oil	1	0	1	0	0	1
Other	2	0	0	2	0	0
Unknown	31	12	8	11	17	36
TOTAL	5,324	184	2,198	2,942	265	3,660

Table 6 - 8

Gender of Drivers Involved in Alcohol Related Crashes

Gender of Driver	Number of Drivers							
	Total	Percent of Total	In Fatal Crashes	Percent of Fatal	In Injury Crashes	Percent of Injury	In PDO Crashes	Percent of PDO
Male	3,847	72.26%	154	83.70%	1,590	72.34%	2,103	71.48%
Female	1,426	26.78%	28	15.22%	599	27.25%	799	27.16%
Unknown	51	0.96%	2	1.09%	9	0.41%	40	1.36%
TOTAL	5,324	100.00%	184	100.00%	2,198	100.00%	2,942	100.00%

In total crashes across the state, 53.01% of the drivers were males. When alcohol was involved, males accounted for 72.26% of the drivers.

Section 6: – Alcohol Related Crashes

Table 6 - 9

Driver Involvement by Age in Alcohol Related Crashes

Driver Age Group	Number of Drivers							
	Total	Percent of Total	In Fatal Crashes	Percent of Fatal	In Injury Crashes	Percent of Injury	In PDO Crashes	Percent of PDO
15 & Under	7	0.13%	0	0.00%	4	0.18%	3	0.10%
16	29	0.54%	3	1.63%	11	0.50%	15	0.51%
17	47	0.88%	2	1.09%	16	0.73%	29	0.99%
18	119	2.24%	2	1.09%	45	2.05%	72	2.45%
19	187	3.51%	7	3.80%	77	3.50%	103	3.50%
20	177	3.32%	7	3.80%	71	3.23%	99	3.37%
21	310	5.82%	9	4.89%	135	6.14%	166	5.64%
22	237	4.45%	8	4.35%	106	4.82%	123	4.18%
23	235	4.41%	6	3.26%	97	4.41%	132	4.49%
24	210	3.94%	7	3.80%	81	3.69%	122	4.15%
25-34	1,508	28.32%	53	28.80%	637	28.98%	818	27.80%
35-44	885	16.62%	23	12.50%	380	17.29%	482	16.38%
45-54	757	14.22%	28	15.22%	299	13.60%	430	14.62%
55-64	350	6.57%	17	9.24%	158	7.19%	175	5.95%
65-74	123	2.31%	8	4.35%	46	2.09%	69	2.35%
75 & Older	40	0.75%	1	0.54%	14	0.64%	25	0.85%
Unknown	103	1.93%	3	1.63%	21	0.96%	79	2.69%
TOTAL	5,324	100.00%	184	100.00%	2,198	100.00%	2,942	100.00%

Table 6 - 10

When Alcohol Related Crashes Occurred in 2011

Time of Day	Total	Weekday	Weekend*
Daytime**	1,469	906	563
Nighttime	4,068	1,605	2,463
Total	5,537	2,511	3,026
*Weekend begins at 6:00 p.m. on Friday and continues through 6:00 a.m. Monday. All other times and days are considered Weekdays.			
**Daytime refers to the hours between 6:00 a.m. and 6:00 p.m.			

Table 6 - 11

Safety Device Usage for Drinking Drivers

Severity of Injury	Safety Device Not Used	Lap Belt	Lap & Shoulder Belt	Protective Helmet	Other	Unknown	Totals
No Injury	189	44	2,091	1	18	999	3,342
Unknown Injury	10	1	40	0	4	185	240
Possible Injury	78	7	285	4	0	175	549
Non-Incapacitating Injury	195	10	341	11	5	196	758
Incapacitating Injury	129	1	84	17	3	80	314
Fatal Injury	73	1	21	7	1	18	121
TOTALS	674	64	2,862	40	31	1,653	5,324

Table 6 - 12

Persons Killed and Injured in Alcohol Related Crashes

Age of Victim	Persons Killed			Persons Injured			
	Total	Male	Female	Total	Male	Female	Gender Unknown
0-4	2	2	0	56	24	32	0
5-9	4	3	1	64	26	38	0
10-14	1	1	0	69	38	31	0
15-19	14	10	4	375	216	159	0
20-24	37	30	7	696	437	259	0
25-34	68	44	24	942	607	335	0
35-44	41	29	12	582	346	236	0
45-54	45	35	10	467	305	162	0
55-64	35	29	6	226	158	68	0
65-74	13	13	0	90	53	37	0
75 & Older	4	4	0	37	20	17	0
Unknown	1	1	0	56	32	18	6
TOTAL	265	201	64	3,660	2,262	1,392	6

Table 6 - 13

Alcohol Related Crashes by County

County	Number of Crashes				Number of Persons	
	Total	Fatal	Injury	PDO	Killed	Injured
Apache	25	7	8	10	7	14
Cochise	77	2	35	40	2	41
Coconino	157	14	65	78	16	117
Gila	61	4	38	19	4	62
Graham	26	4	8	14	5	20
Greenlee	6	1	3	2	1	3
La Paz	16	6	5	5	9	14
Maricopa	3,503	107	1,442	1,954	120	2,219
Mohave	206	6	90	110	6	130
Navajo	91	10	47	34	11	78
Pima	750	32	334	384	35	516
Pinal	232	25	99	108	28	183
Santa Cruz	23	1	9	13	1	12
Yavapai	184	11	77	96	14	113
Yuma	180	6	90	84	6	138
TOTAL	5,537	236	2,350	2,951	265	3,660

Section 6: – Alcohol Related Crashes

Chart 6 - 1

All Alcohol Related Crashes vs. Fatal Alcohol Related Crashes by Day of Week

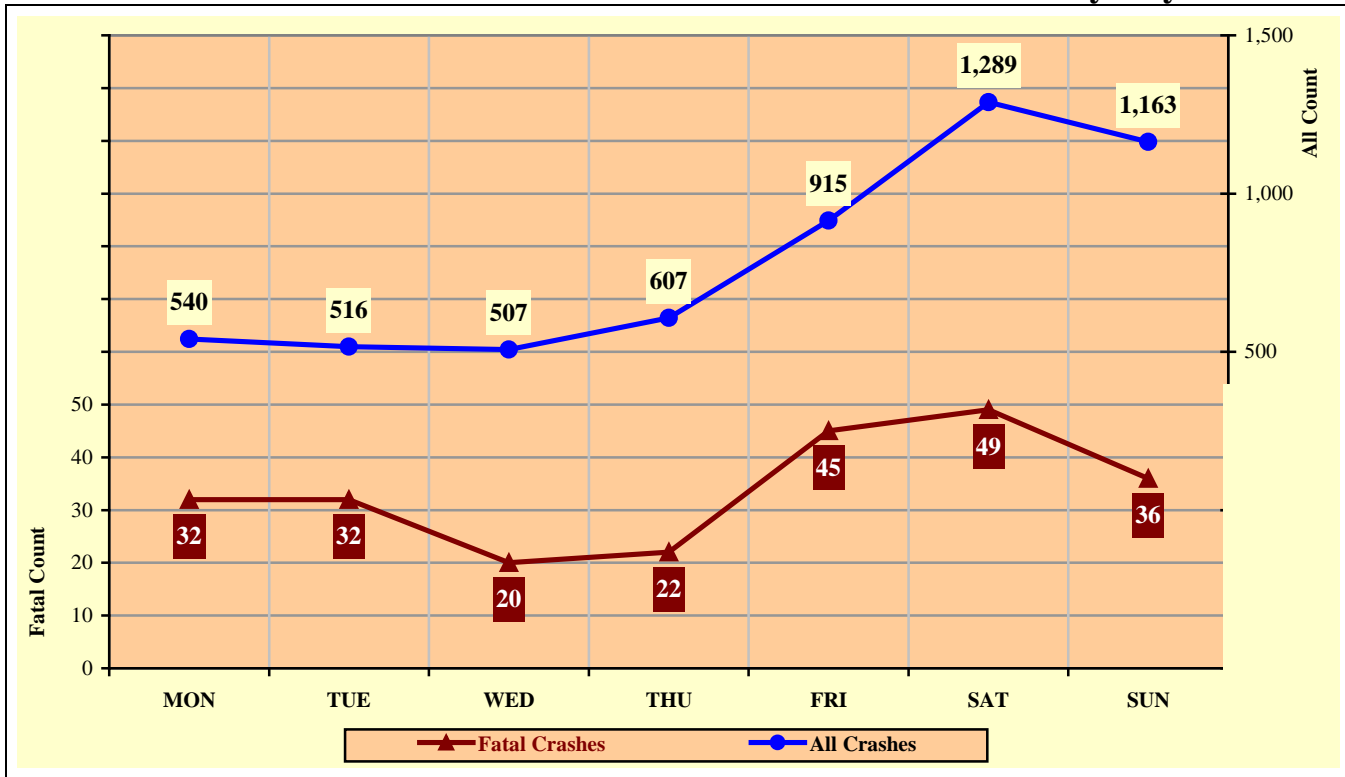


Chart 6 - 2

All Alcohol Related Crashes vs. Fatal Alcohol Related Crashes by Month

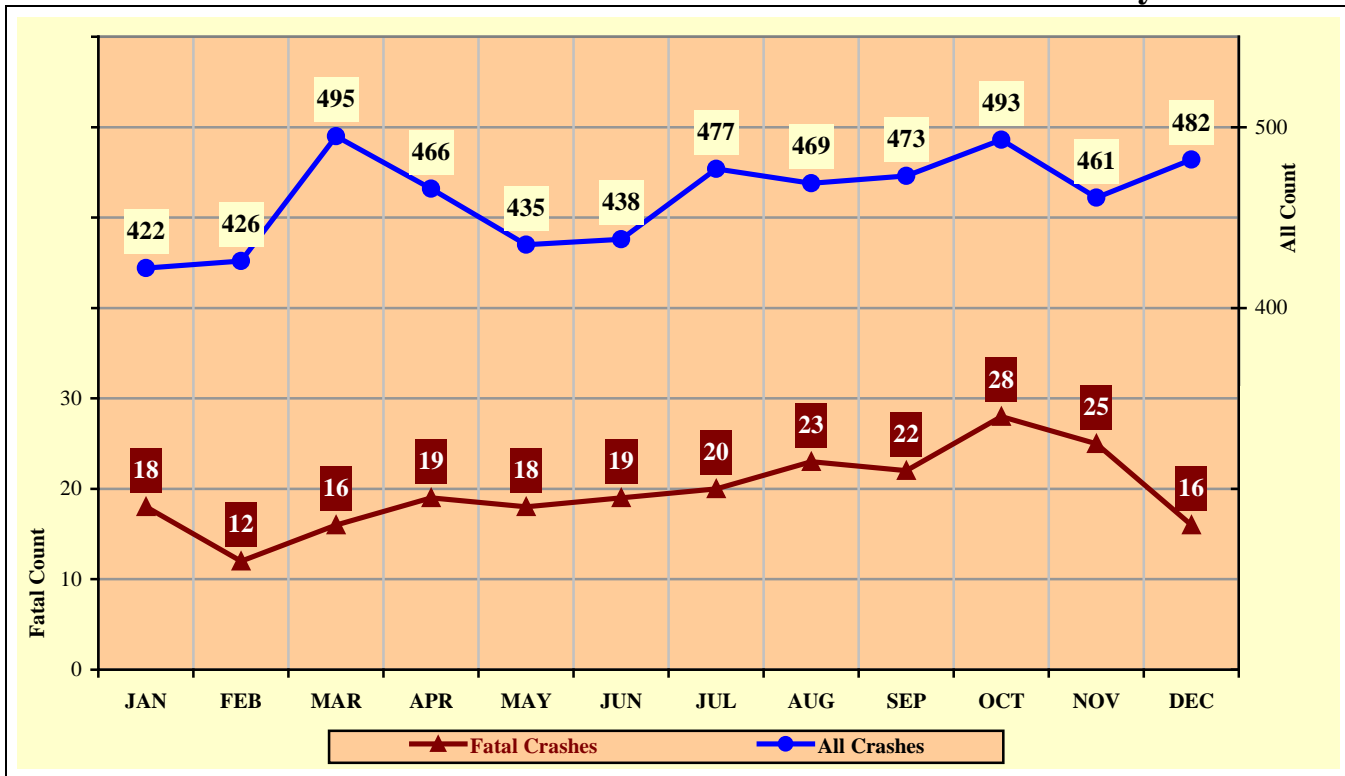


Chart 6 - 3

All Alcohol Related Crashes vs. Fatal Alcohol Related Crashes - Weekdays

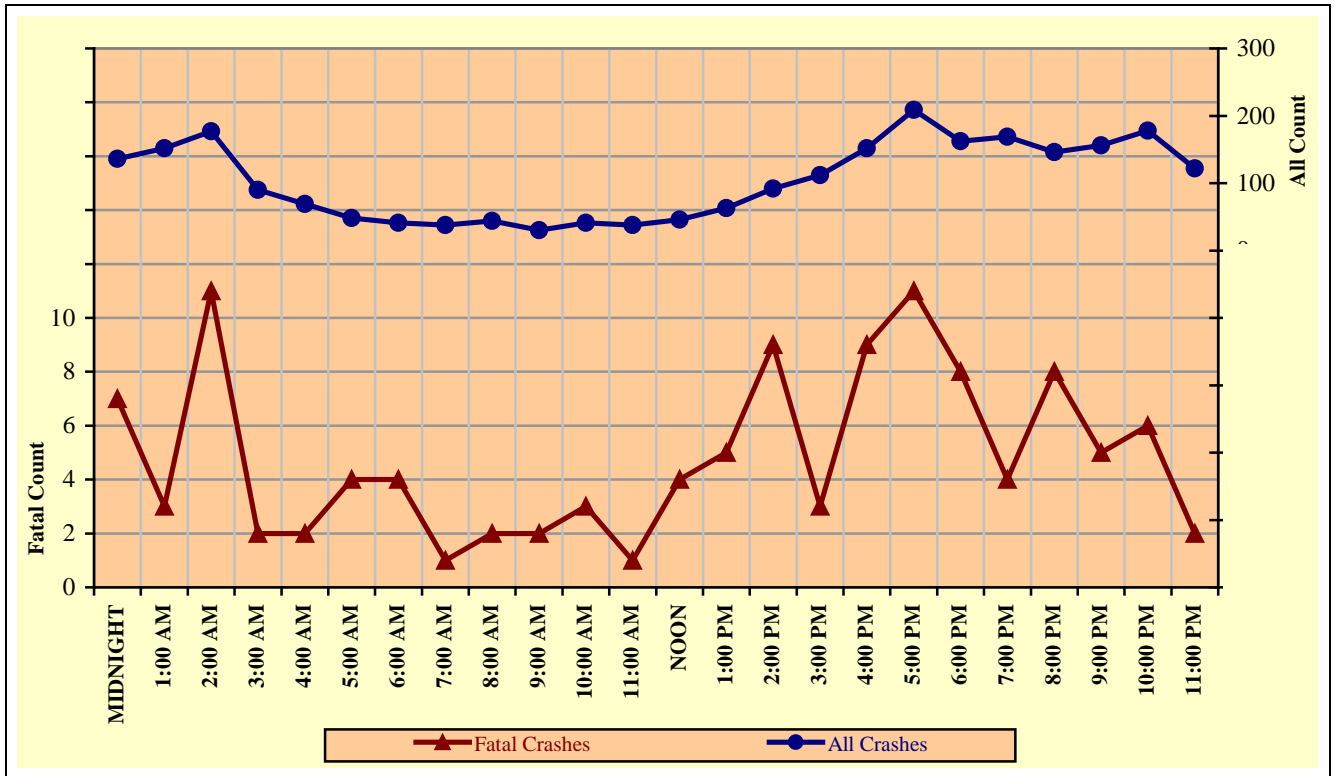
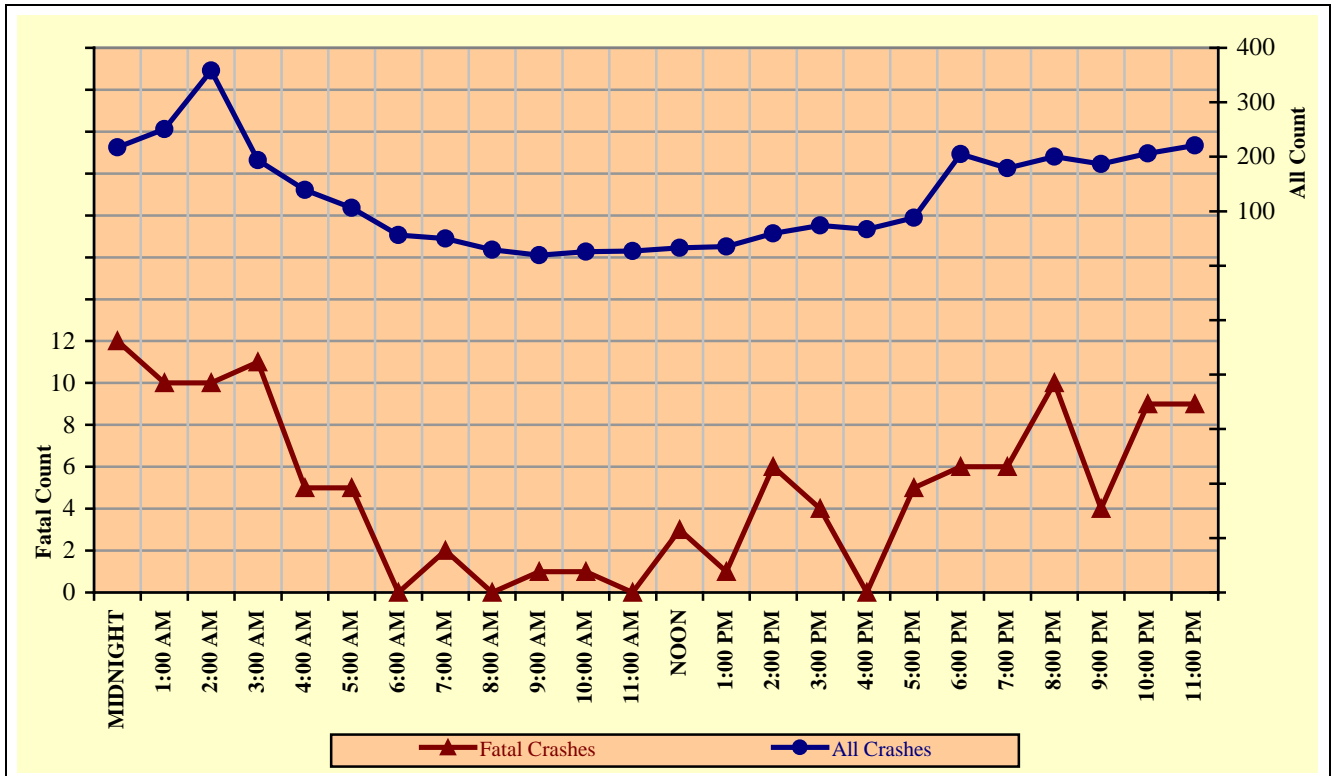


Chart 6 - 4

All Alcohol Related Crashes vs. Fatal Alcohol Related Crashes - Weekends



Section 6: – Alcohol Related Crashes

Table 6 - 14

Alcohol Related Crashes by Hour and Day of Week

Hour Beginning	Total Crashes		Monday		Tuesday		Wednesday		Thursday		Friday		Saturday		Sunday		Weekdays		Weekends	
	All	Fatal	All	Fatal	All	Fatal	All	Fatal	All	Fatal	All	Fatal	All	Fatal	All	Fatal	All	Fatal	All	Fatal
MIDNIGHT	353	19	26	4	27	2	25	0	24	0	60	5	86	5	105	3	136	7	217	12
1:00 AM	403	13	44	0	27	1	23	1	46	1	56	0	91	7	116	3	152	3	251	10
2:00 AM	535	21	42	5	27	2	32	0	55	3	63	6	155	5	161	0	177	11	358	10
3:00 AM	284	13	24	2	13	0	14	0	24	1	39	1	93	7	77	2	90	2	194	11
4:00 AM	208	7	19	0	19	1	6	0	11	0	33	1	52	1	68	4	69	2	139	5
5:00 AM	154	9	15	2	8	2	8	0	13	1	19	1	44	1	47	2	48	4	106	5
6:00 AM	97	4	7	1	9	1	5	1	11	1	9	0	24	0	32	0	41	4	56	0
7:00 AM	88	3	4	1	8	0	6	0	11	0	9	0	21	0	29	2	38	1	50	2
8:00 AM	73	2	8	0	9	1	9	0	8	0	10	1	19	0	10	0	44	2	29	0
9:00 AM	49	3	5	0	4	0	10	1	4	0	7	1	9	0	10	1	30	2	19	1
10:00 AM	67	4	7	1	10	1	5	0	4	0	15	1	16	1	10	0	41	3	26	1
11:00 AM	65	1	12	0	5	1	7	0	7	0	7	0	14	0	13	0	38	1	27	0
NOON	79	7	12	3	7	1	4	0	7	0	16	0	14	0	19	3	46	4	33	3
1:00 PM	98	6	9	1	9	0	12	1	12	2	21	1	12	0	23	1	63	5	35	1
2:00 PM	151	15	19	1	14	2	18	3	18	2	23	1	32	4	27	2	92	9	59	6
3:00 PM	186	7	19	0	25	1	24	1	18	0	26	1	44	2	30	2	112	3	74	4
4:00 PM	219	9	32	3	22	2	23	1	35	2	40	1	40	0	27	0	152	9	67	0
5:00 PM	297	16	34	2	38	3	44	4	35	0	58	2	50	3	38	2	209	11	88	5
6:00 PM	367	14	30	0	43	3	44	3	45	2	70	2	70	3	65	1	162	8	205	6
7:00 PM	348	10	32	1	46	1	44	0	47	2	62	1	63	3	54	2	169	4	179	6
8:00 PM	346	18	34	1	40	4	31	1	41	2	55	7	80	2	65	1	146	8	200	10
9:00 PM	343	9	38	1	35	1	38	2	45	1	61	2	80	1	46	1	156	5	187	4
10:00 PM	384	15	41	2	41	1	42	1	54	2	67	5	97	2	42	2	178	6	206	9
11:00 PM	343	11	27	1	30	1	33	0	32	0	89	5	83	2	49	2	122	2	221	9
TOTAL	5,537	236	540	32	516	32	507	20	607	22	915	45	1,289	49	1,163	36	2,511	116	3,026	120

Crashes during Weekends accounted for 54.65% of all Alcohol Related crashes and 50.85% of Alcohol Related Fatal Crashes.

Crashes during Weekdays accounted for 45.35% of all Alcohol Related crashes and 49.15% of Alcohol Related Fatal Crashes.

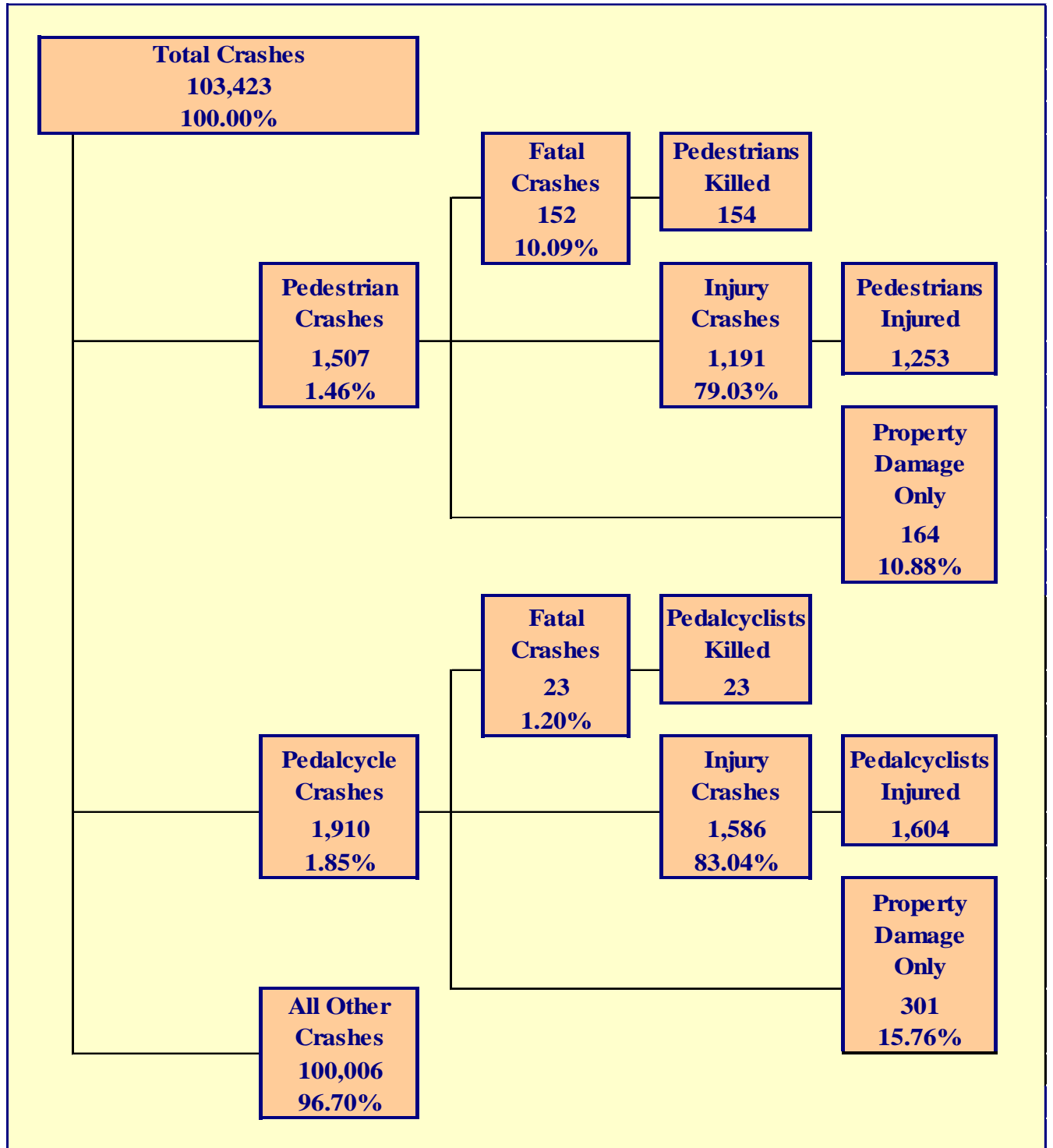


Table 7 - 1

Pedestrians Killed and Injured By Age and Gender

Age Group	Pedestrians Killed			Pedestrians Injured			
	Total	Male	Female	Total	Male	Female	Gender Unknown
0-4	1	1	0	39	18	21	0
5-9	1	0	1	67	43	24	0
10-14	2	2	0	105	53	52	0
15-19	8	6	2	192	91	101	0
20-24	7	4	3	114	74	40	0
25-34	20	14	6	187	115	72	0
35-44	23	16	7	138	89	49	0
45-54	33	25	8	172	112	60	0
55-64	27	21	6	110	70	40	0
65-74	16	14	2	65	37	28	0
75 & Older	15	11	4	36	23	13	0
Unknown	1	1	0	28	12	4	12
TOTAL	154	115	39	1,253	737	504	12

Table 7 - 2

Pedestrian Crashes by Geographic Location

Category	Total	Urban	Percent of Total	Rural	Percent of Total
Total Crashes	1,507	1,362	90.38%	145	9.62%
Fatal Crashes	152	109	71.71%	43	28.29%
Injury Crashes	1,191	1,099	92.28%	92	7.72%
PDO Crashes	164	154	93.90%	10	6.10%
Pedestrians Killed	154	110	71.43%	44	28.57%
Pedestrians Injured	1,253	1,158	92.42%	95	7.58%

Table 7 - 3

Pedestrian Crash History

Year	Pedestrian Crashes	Percent of all Crashes	Pedestrians Killed	Percent of all Fatalities	Pedestrians Injured	Percent of all Injuries
2007	1,737	1.23%	157	14.66%	1,542	2.33%
2008	1,581	1.31%	125	13.33%	1,432	2.53%
2009	1,529	1.43%	122	15.14%	1,312	2.58%
2010	1,462	1.37%	154	20.29%	1,250	2.48%
2011	1,507	1.46%	154	18.67%	1,253	2.53%

Table 7 - 4

Pedestrians Killed by Age and Action

Pedestrian Action	Total	Age Group of Pedestrian											
		0-4	5-9	10-14	15-19	20-24	25-34	35-44	45-54	55-64	65-74	75 & Older	Unknown
Crossing Road	86	0	0	2	5	4	8	10	19	18	10	10	0
Walking With Traffic	15	0	0	0	1	1	1	3	4	2	3	0	0
Walking Against Traffic	4	0	0	0	0	0	1	1	0	0	1	1	0
Standing	10	0	1	0	0	0	2	4	1	0	0	1	1
Lying	9	0	0	0	1	0	4	0	1	2	0	1	0
Getting on/off Vehicle	0	0	0	0	0	0	0	0	0	0	0	0	0
Working on/pushing Veh	2	0	0	0	0	0	0	0	1	0	1	0	0
Working on Road	0	0	0	0	0	0	0	0	0	0	0	0	0
Other	8	0	0	0	0	0	1	2	4	1	0	0	0
Unknown	20	1	0	0	1	2	3	3	3	4	1	2	0
TOTAL	154	1	1	2	8	7	20	23	33	27	16	15	1

Table 7 - 5

Pedestrians Injured by Age and Action

Pedestrian Action	Total	Age Group of Pedestrian											
		0-4	5-9	10-14	15-19	20-24	25-34	35-44	45-54	55-64	65-74	75 & Older	Unknown
Crossing Road	719	20	43	68	113	57	97	79	99	67	40	22	14
Walking With Traffic	49	0	2	2	11	6	11	5	4	1	3	3	1
Walking Against Traffic	56	2	4	6	5	5	10	4	8	5	5	1	1
Standing	66	4	0	1	7	8	14	9	16	4	1	1	1
Lying	2	0	0	0	0	1	1	0	0	0	0	0	0
Getting on/off Vehicle	2	0	0	0	1	0	0	0	0	1	0	0	0
Working on/pushing Veh	7	0	0	0	1	0	2	2	1	0	0	0	1
Working on Road	4	0	0	0	0	1	2	0	1	0	0	0	0
Other	279	12	13	22	48	31	38	33	31	26	12	6	7
Unknown	69	1	5	6	6	5	12	6	12	6	4	3	3
TOTAL	1,253	39	67	105	192	114	187	138	172	110	65	36	28

Table 7 - 6

Pedestrian Physical Condition in Motor Vehicle Crashes

Type of Condition	Number of Pedestrians							
	Total	Percent of Total	In Fatal Crashes	Percent of Fatal	In Injury Crashes	Percent of Injury	In PDO Crashes	Percent of PDO
No Apparent Influence	1,110	69.33%	34	21.12%	949	74.67%	127	75.15%
Had Been Drinking	199	12.43%	56	34.78%	131	10.31%	12	7.10%
Appeared to be Under the Influence of Drugs*	14	0.87%	7	4.35%	7	0.55%	0	0.00%
Medications	2	0.12%	0	0.00%	2	0.16%	0	0.00%
Illness	7	0.44%	0	0.00%	7	0.55%	0	0.00%
Physical Impairment	10	0.62%	1	0.62%	7	0.55%	2	1.18%
Fell Asleep or Fatigued	2	0.12%	0	0.00%	2	0.16%	0	0.00%
Other	18	1.12%	1	0.62%	16	1.26%	1	0.59%
Unknown	239	14.93%	62	38.51%	150	11.80%	27	15.98%
TOTAL	1,601	100.00%	161	100.00%	1,271	100.00%	169	100.00%

*Illegal drugs or narcotics

Section 7: – Pedestrian and Pedalcyclist Crashes

Table 7 - 7

Lighting Conditions in Pedestrian Crashes

Type of Lighting Conditions	Number of Crashes			
	Total	Fatal	Injury	PDO
Daylight	843	31	707	105
Dawn	27	2	24	1
Dusk	57	10	41	6
Dark - Lighted	415	50	325	40
Dark - Not Lighted	139	45	84	10
Dark - Unknown Lighting	26	14	10	2
TOTAL	1,507	152	1,191	164

Table 7 - 8

Weather Conditions in Pedestrian Crashes

Type of Weather Conditions	Number of Crashes			
	Total	Fatal	Injury	PDO
Clear	1,303	116	1,044	143
Cloudy	126	13	101	12
Sleet/Hail	0	0	0	0
Rain	45	3	36	6
Snow	1	1	0	0
Severe Crosswinds	1	0	1	0
Blowing Sand, Soil, Dirt	0	0	0	0
Fog, Smog, Smoke	0	0	0	0
Blowing Snow	0	0	0	0
Other	1	0	1	0
Unknown	30	19	8	3
TOTAL	1,507	152	1,191	164

Table 7 - 9

Pedalcyclists Killed and Injured by Age and Gender

Age Group	Pedalcyclists Killed			Pedalcyclists Injured			
	Total	Male	Female	Total	Male	Female	Gender Unknown
0-4	0	0	0	8	4	4	0
5-9	1	1	0	41	31	10	0
10-14	0	0	0	175	142	33	0
15-19	1	1	0	226	162	64	0
20-24	2	1	1	239	175	64	0
25-34	2	1	1	239	168	71	0
35-44	2	2	0	190	152	38	0
45-54	6	4	2	253	203	50	0
55-64	6	6	0	138	115	23	0
65-74	0	0	0	40	36	4	0
75 & Older	3	3	0	14	13	1	0
Unknown	0	0	0	41	15	7	19
TOTAL	23	19	4	1,604	1,216	369	19

Table 7 - 10

Pedalcycle Crashes by Geographic Location

Category	Total	Urban	Percent of Total	Rural	Percent of Total
Total Crashes	1,910	1,768	92.57%	142	7.43%
Fatal Crashes	23	21	91.30%	2	8.70%
Injury Crashes	1,586	1,477	93.13%	109	6.87%
PDO Crashes	301	270	89.70%	31	10.30%
Pedalcyclists Killed	23	21	91.30%	2	8.70%
Pedalcyclists Injured	1,604	1,490	92.89%	114	7.11%

Table 7 - 11

Pedalcycle Crash History

Year	Pedalcycle Crashes	Percent of all Crashes	Pedalcyclists Killed	Percent of all Fatalities	Pedalcyclists Injured	Percent of all Injuries
2007	1,922	1.36%	21	1.96%	1,606	2.43%
2008	2,006	1.66%	19	2.03%	1,697	3.00%
2009	2,002	1.87%	25	3.10%	1,650	3.25%
2010	1,928	1.81%	19	2.50%	1,595	3.16%
2011	1,910	1.85%	23	2.79%	1,604	3.24%

Table 7 - 12

Lighting Conditions in Pedalcyclist Crashes

Type of Lighting Conditions	Number of Crashes			
	Total	Fatal	Injury	PDO
Daylight	1,500	15	1,241	244
Dawn	30	1	27	2
Dusk	59	2	50	7
Dark - Lighted	252	1	205	46
Dark - Not Lighted	53	3	49	1
Dark - Unknown Lighting	16	1	14	1
TOTAL	1,910	23	1,586	301

Table 7 - 13

Weather Conditions in Pedalcyclist Crashes

Type of Weather Conditions	Number of Crashes			
	Total	Fatal	Injury	PDO
Clear	1,734	15	1,445	274
Cloudy	142	3	121	18
Sleet/Hail	0	0	0	0
Rain	15	0	11	4
Snow	0	0	0	0
Severe Crosswinds	0	0	0	0
Blowing Sand, Soil, Dirt	1	0	1	0
Fog, Smog, Smoke	0	0	0	0
Blowing Snow	0	0	0	0
Other	1	0	1	0
Unknown	17	5	7	5
TOTAL	1,910	23	1,586	301

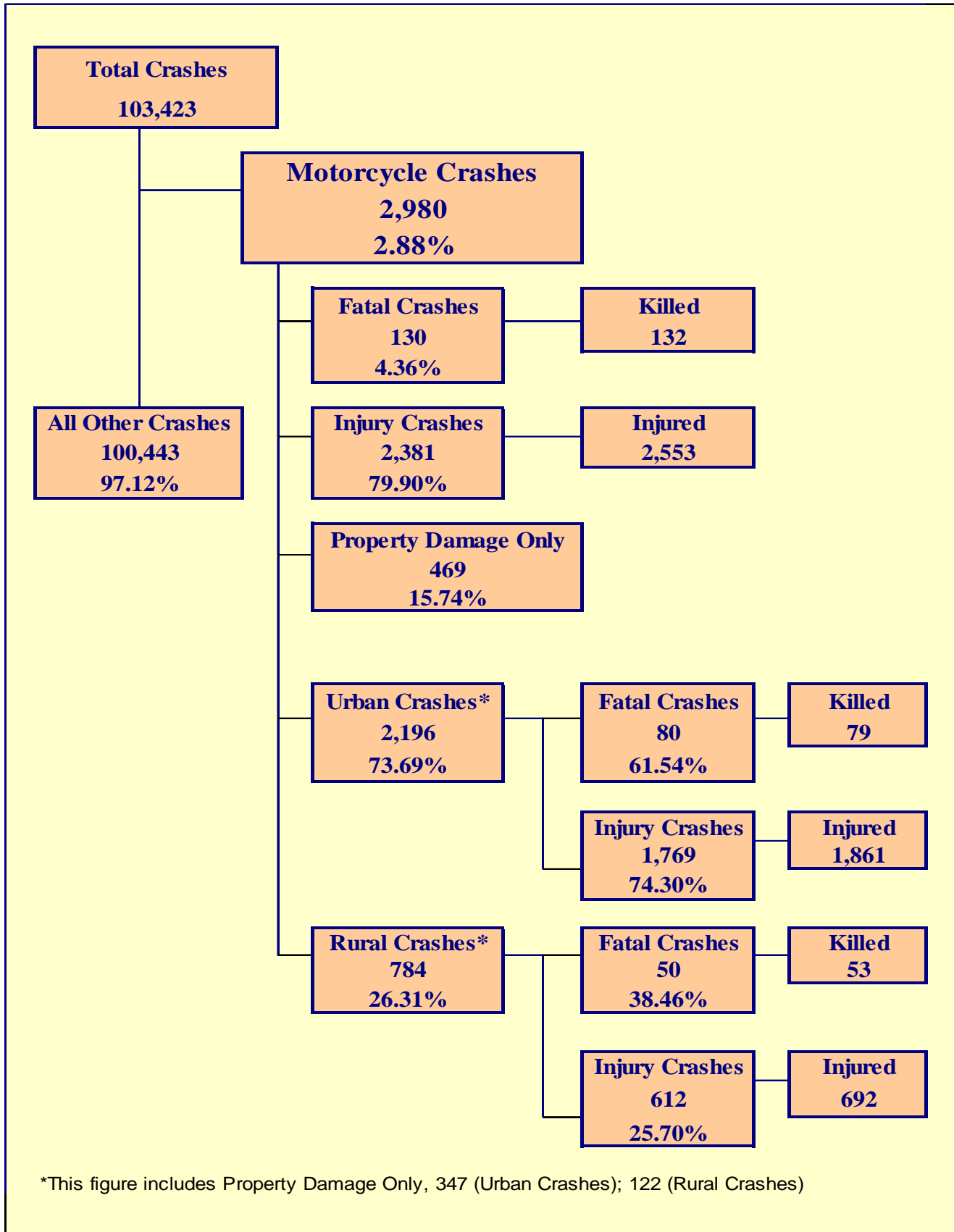


Chart 8 - 1

MC Fatalities by Year

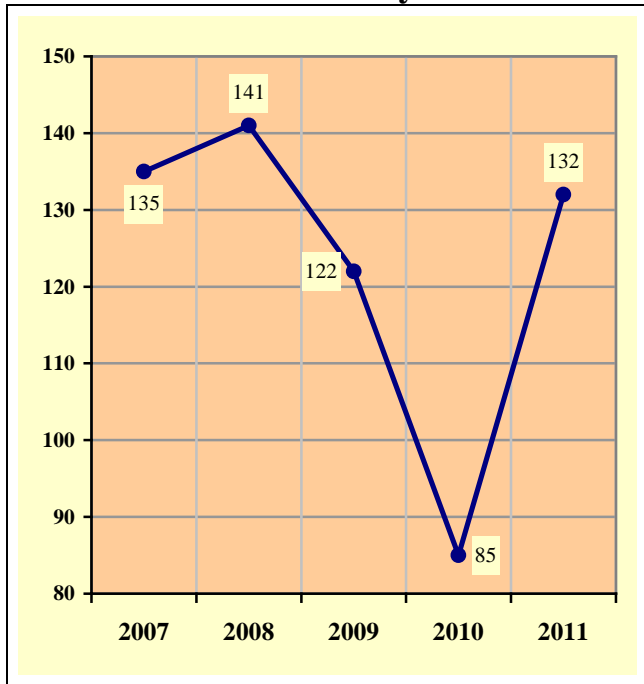
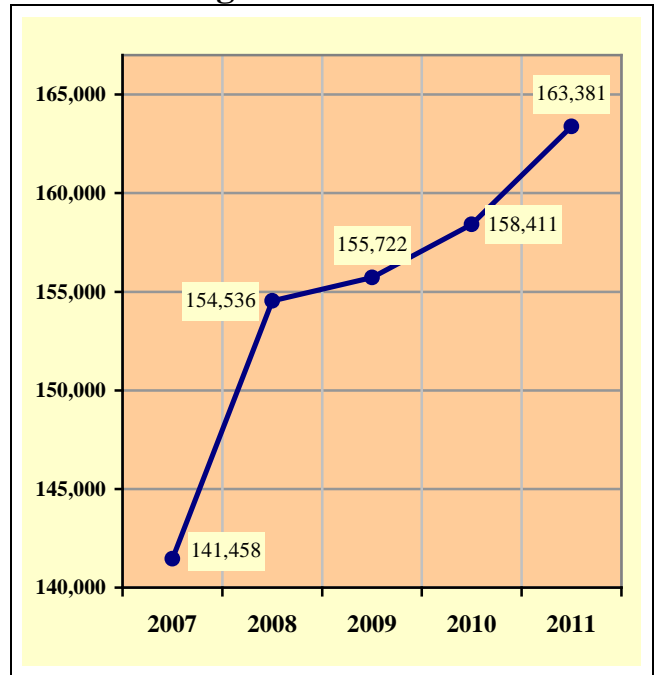


Chart 8 - 2

MC Registrations in Arizona



Total Point-in-Time of Registered Motorcycles at the end of Calendar year 2011.
 (Source: MVD - MV988 MV630419 Currently Registered Vehicles by County Listing (motorcycle sub category), reports dated 12/31/11.)

Chart 8 - 3

Fatality Rate per Registered MC

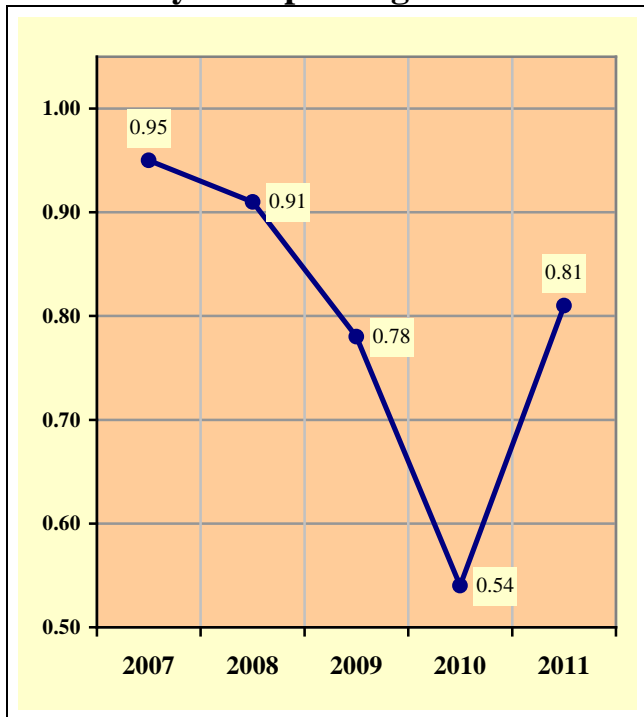
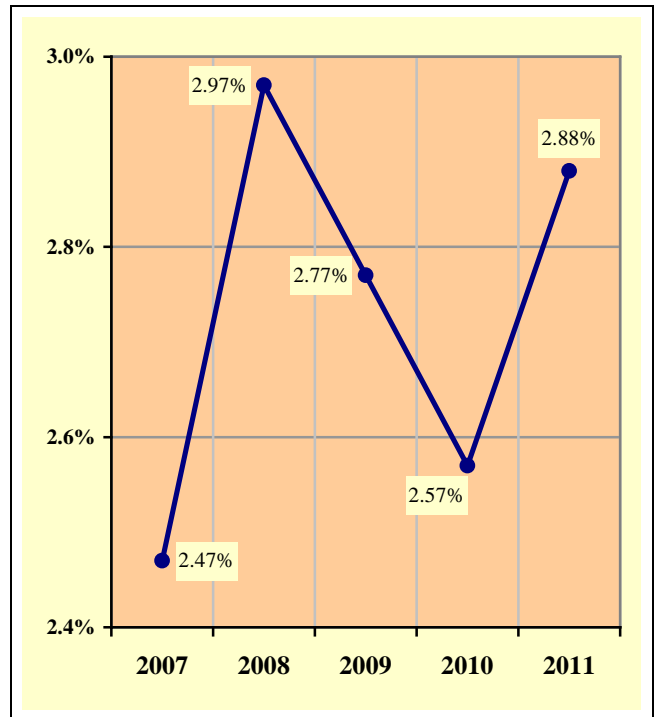


Chart 8 - 4

Percent of MC Crashes to All Crashes



Section 8: – Motorcycle (MC) Crashes

Table 8 - 1

MC Crashes by First Harmful Event

First Harmful Event Type	Number of Crashes			
	Total	Fatal	Injury	PDO
Collision with Motor Vehicle in Transport	1,436	73	1,057	306
Overtaking	357	15	317	25
Collision with Pedestrian	5	1	4	0
Collision with Pedalcyclist	11	0	10	1
Collision with Animal	32	2	25	5
Collision with Fixed Object	370	33	306	31
Collision with Non-fixed Object*	79	3	42	34
Vehicle Fire or Explosion	1	0	0	1
Other Non-collision**	386	1	348	37
Unknown	303	2	272	29
TOTAL	2,980	130	2,381	469
*Includes Collision with Parked Vehicles, Trains, Railway Vehicles, and Work Zone Equipment				
**Includes Vehicle Immersion, Jackknife, and Cargo Loss or Shift				

Table 8 - 2

Lighting Conditions in MC Crashes

Type of Lighting Conditions	Number of Crashes			
	Total	Fatal	Injury	PDO
Daylight	2,107	78	1,695	334
Dawn	39	2	31	6
Dusk	102	8	78	16
Dark - Lighted	546	22	431	93
Dark - Not Lighted	167	17	131	19
Dark - Unknown Lighting	19	3	15	1
TOTAL	2,980	130	2,381	469

Table 8 - 3

Road Surface Conditions in MC Crashes

Type of Road Surface Condition	Number of Operators			
	Total	In Fatal Crashes	In Injury Crashes	In PDO Crashes
Dry	2,909	133	2,326	450
Wet	63	0	52	11
Snow	3	0	3	0
Slush	2	0	0	2
Ice/Frost	2	0	2	0
Water (standing or moving)	1	0	1	0
Sand	9	0	7	2
Mud, Dirt, Gravel	35	0	31	4
Oil	7	0	5	2
Other	4	0	2	2
Unknown	23	7	13	3
TOTAL	3,058	140	2,442	476

Table 8 - 4

MC Crashes by Geographic Location

Category	Total	Urban	Percent of Total	Rural	Percent of Total
Total Crashes	2,980	2,196	73.69%	784	26.31%
Fatal Crashes	130	80	61.54%	50	38.46%
Injury Crashes	2,381	1,769	74.30%	612	25.70%
PDO Crashes	469	347	73.99%	122	26.01%
Persons Killed	132	79	59.85%	53	40.15%
Persons Injured	2,553	1,861	72.89%	692	27.11%

Table 8 - 5

Operator Involvement by Age in MC Crashes

Operator Age Group	Number of Operators							
	Total	Percent of Total	In Fatal Crashes	Percent of Fatal	In Injury Crashes	Percent of Injury	In PDO Crashes	Percent of PDO
15 & Under	9	0.29%	0	0.00%	9	0.37%	0	0.00%
16	8	0.26%	0	0.00%	7	0.29%	1	0.21%
17	16	0.52%	0	0.00%	13	0.53%	3	0.63%
18	41	1.34%	0	0.00%	36	1.47%	5	1.05%
19	86	2.81%	4	2.86%	71	2.91%	11	2.31%
20	100	3.27%	2	1.43%	88	3.60%	10	2.10%
21	85	2.78%	4	2.86%	69	2.83%	12	2.52%
22	94	3.07%	5	3.57%	83	3.40%	6	1.26%
23	78	2.55%	3	2.14%	64	2.62%	11	2.31%
24	75	2.45%	2	1.43%	55	2.25%	18	3.78%
25-34	629	20.57%	23	16.43%	507	20.76%	99	20.80%
35-44	541	17.69%	21	15.00%	450	18.43%	70	14.71%
45-54	596	19.49%	27	19.29%	473	19.37%	96	20.17%
55-64	459	15.01%	37	26.43%	369	15.11%	53	11.13%
65-74	137	4.48%	9	6.43%	105	4.30%	23	4.83%
75 & Older	23	0.75%	3	2.14%	18	0.74%	2	0.42%
Unknown	81	2.65%	0	0.00%	25	1.02%	56	11.76%
TOTAL	3,058	100.00%	140	100.00%	2,442	100.00%	476	100.00%

Table 8 - 6

MC Operator Physical Condition

Type of Condition	Number of Operators							
	Total	Percent of Total	In Fatal Crashes	Percent of Fatal	In Injury Crashes	Percent of Injury	In PDO Crashes	Percent of PDO
No Apparent Influence	2,612	85.42%	56	40.00%	2,140	87.63%	416	87.39%
Had Been Drinking	190	6.21%	33	23.57%	147	6.02%	10	2.10%
Appeared to be Under the Influence of Drugs*	16	0.52%	9	6.43%	6	0.25%	1	0.21%
Medications	3	0.10%	1	0.71%	2	0.08%	0	0.00%
Illness	2	0.07%	0	0.00%	2	0.08%	0	0.00%
Physical Impairment	0	0.00%	0	0.00%	0	0.00%	0	0.00%
Fell Asleep or Fatigued	6	0.20%	0	0.00%	5	0.20%	1	0.21%
Other	9	0.29%	1	0.71%	5	0.20%	3	0.63%
Unknown	220	7.19%	40	28.57%	135	5.53%	45	9.45%
TOTAL	3,058	100.00%	140	100.00%	2,442	100.00%	476	100.00%

* Illegal drugs or narcotics

Table 8 - 7

MC Operators Involved in Fatal Crashes by License Status

License Status	2009		2010		2011	
	Number of Operators	Percent of Total	Number of Operators	Percent of Total	Number of Operators	Percent of Total
No license	6	4.84%	3	3.09%	4	2.90%
Invalid	25	20.16%	14	14.43%	23	16.67%
Valid	91	73.39%	79	81.44%	109	78.99%
Unknown	2	1.61%	1	1.03%	2	1.45%
TOTALS	124	100.00%	97	100.00%	138	100.00%
Note: Includes only motorcycle operators involved in fatal crashes.						
Source: FARS Data Queries						

Table 8 - 8

MC Operator’s Helmet Use

Severity of Injury	Helmet Used	Percent of Total	Helmet Not Used	Percent of Total	Unknown	Percent of Total	Total	Percent of Total
No Injury	218	15.19%	95	11.61%	195	24.22%	508	16.61%
Unknown Injury	14	0.98%	5	0.61%	31	3.85%	50	1.64%
Possible Injury	221	15.40%	100	12.22%	152	18.88%	473	15.47%
Non-Incapacitating Injury	645	44.95%	351	42.91%	305	37.89%	1,301	42.54%
Incapacitating Injury	287	20.00%	211	25.79%	112	13.91%	610	19.95%
Fatal Injury	50	3.48%	56	6.85%	10	1.24%	116	3.79%
TOTALS	1,435	100.00%	818	100.00%	805	100.00%	3,058	100.00%

Table 8 - 9

MC Passenger’s Helmet Use

Severity of Injury	Helmet Used	Percent of Total	Helmet Not Used	Percent of Total	Unknown	Percent of Total	Total	Percent of Total
No Injury	6	6.98%	16	19.51%	15	25.00%	37	16.23%
Unknown Injury	0	0.00%	0	0.00%	6	10.00%	6	2.63%
Possible Injury	12	13.95%	6	7.32%	12	20.00%	30	13.16%
Non-Incapacitating Injury	51	59.30%	26	31.71%	16	26.67%	93	40.79%
Incapacitating Injury	12	13.95%	24	29.27%	10	16.67%	46	20.18%
Fatal Injury	5	5.81%	10	12.20%	1	1.67%	16	7.02%
TOTALS	86	100.00%	82	100.00%	60	100.00%	228	100.00%

Table 8 - 10

MC Operators and Passengers Killed and Injured

Age of Victim	Persons Killed			Persons Injured			
	Total	Male	Female	Total	Male	Female	Gender Unknown
0-4	0	0	0	3	2	1	0
5-9	0	0	0	4	3	1	0
10-14	0	0	0	10	6	4	0
15-19	4	4	0	140	123	17	0
20-24	15	14	1	378	345	33	0
25-34	23	19	4	524	473	51	0
35-44	18	16	2	468	400	68	0
45-54	27	21	6	497	424	73	0
55-64	34	26	8	382	339	43	0
65-74	8	8	0	106	99	7	0
75 & Older	3	3	0	18	18	0	0
Unknown	0	0	0	23	15	6	2
TOTAL	132	111	21	2,553	2,247	304	2

Table 8 - 11

MC Operator Errors

Type of Violation or Behavior	Number of Operators							
	Total	Percent of Total	In Fatal Crashes	Percent of Fatal	In Injury Crashes	Percent of Injury	In PDO Crashes	Percent of PDO
No Improper Action	1,424	46.57%	51	36.43%	1,129	46.23%	244	51.26%
Speed too Fast for Conditions	720	23.54%	33	23.57%	605	24.77%	82	17.23%
Exceeded Lawful Speed	65	2.13%	10	7.14%	51	2.09%	4	0.84%
Failed to Yield Right-Of-Way	38	1.24%	3	2.14%	28	1.15%	7	1.47%
Followed Too Closely	72	2.35%	0	0.00%	56	2.29%	16	3.36%
Ran Stop Sign	21	0.69%	3	2.14%	14	0.57%	4	0.84%
Disregarded Traffic Signal	29	0.95%	2	1.43%	25	1.02%	2	0.42%
Made Improper Turn	32	1.05%	0	0.00%	21	0.86%	11	2.31%
Drove in Opposing Lane	23	0.75%	6	4.29%	12	0.49%	5	1.05%
Knowingly Operated with Faulty or Missing Equipment	10	0.33%	0	0.00%	9	0.37%	1	0.21%
Required Motorcycle Safety Equipment Not Used	9	0.29%	1	0.71%	8	0.33%	0	0.00%
Passed in No-Passing Zone	9	0.29%	2	1.43%	7	0.29%	0	0.00%
Unsafe Lane Change	40	1.31%	2	1.43%	30	1.23%	8	1.68%
Failed to Keep in Proper Lane	81	2.65%	6	4.29%	62	2.54%	13	2.73%
Disregarded Pavement Markings	1	0.03%	0	0.00%	1	0.04%	0	0.00%
Other Unsafe Passing	25	0.82%	1	0.71%	18	0.74%	6	1.26%
Inattention/Distraction	145	4.74%	1	0.71%	122	5.00%	22	4.62%
Electronic Communications Device	0	0.00%	0	0.00%	0	0.00%	0	0.00%
Other	100	3.27%	1	0.71%	78	3.19%	21	4.41%
Unknown	214	7.00%	18	12.86%	166	6.80%	30	6.30%
TOTAL	3,058	100.00%	140	100.00%	2,442	100.00%	476	100.00%

Section 8: – Motorcycle (MC) Crashes

Chart 8 - 5

All MC Crashes vs. Fatal MC Crashes by Time of Day - Weekdays

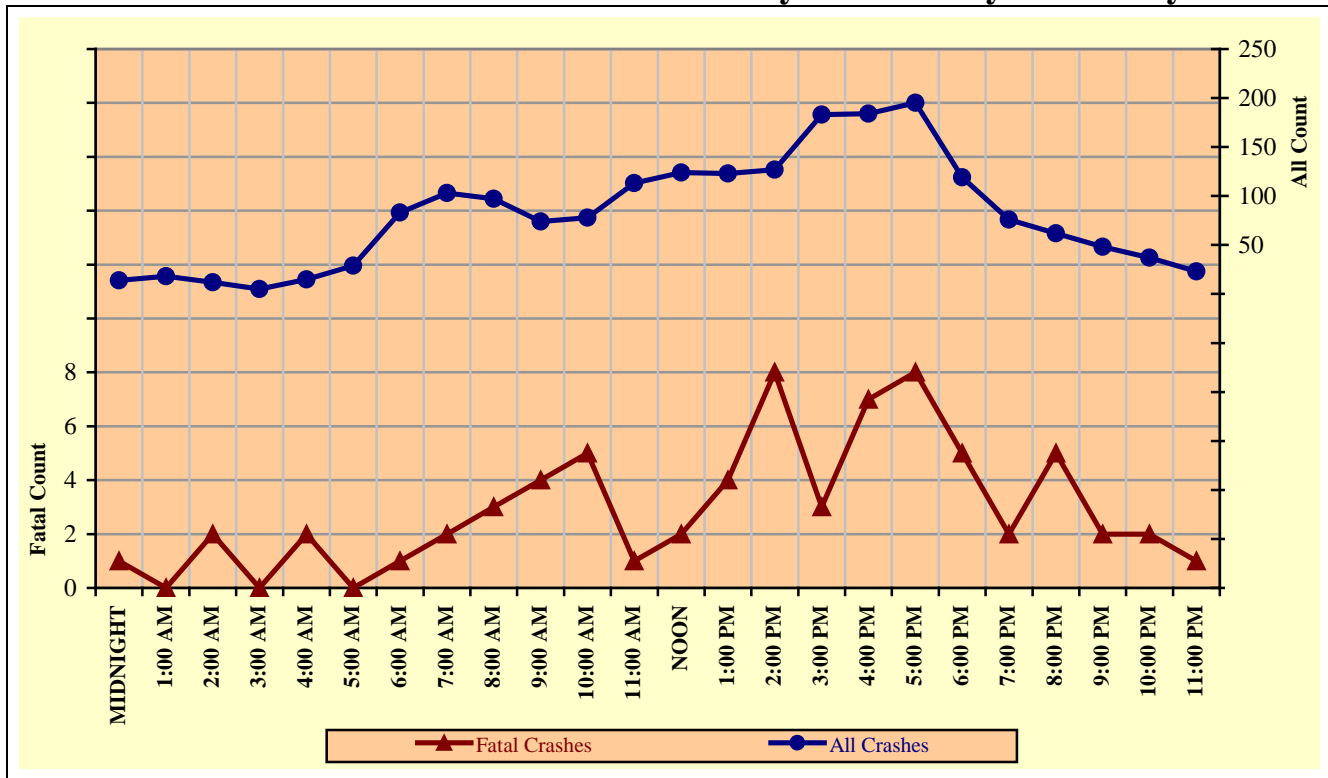


Chart 8 - 6

All MC Crashes vs. Fatal MC Crashes by Time of Day - Weekends

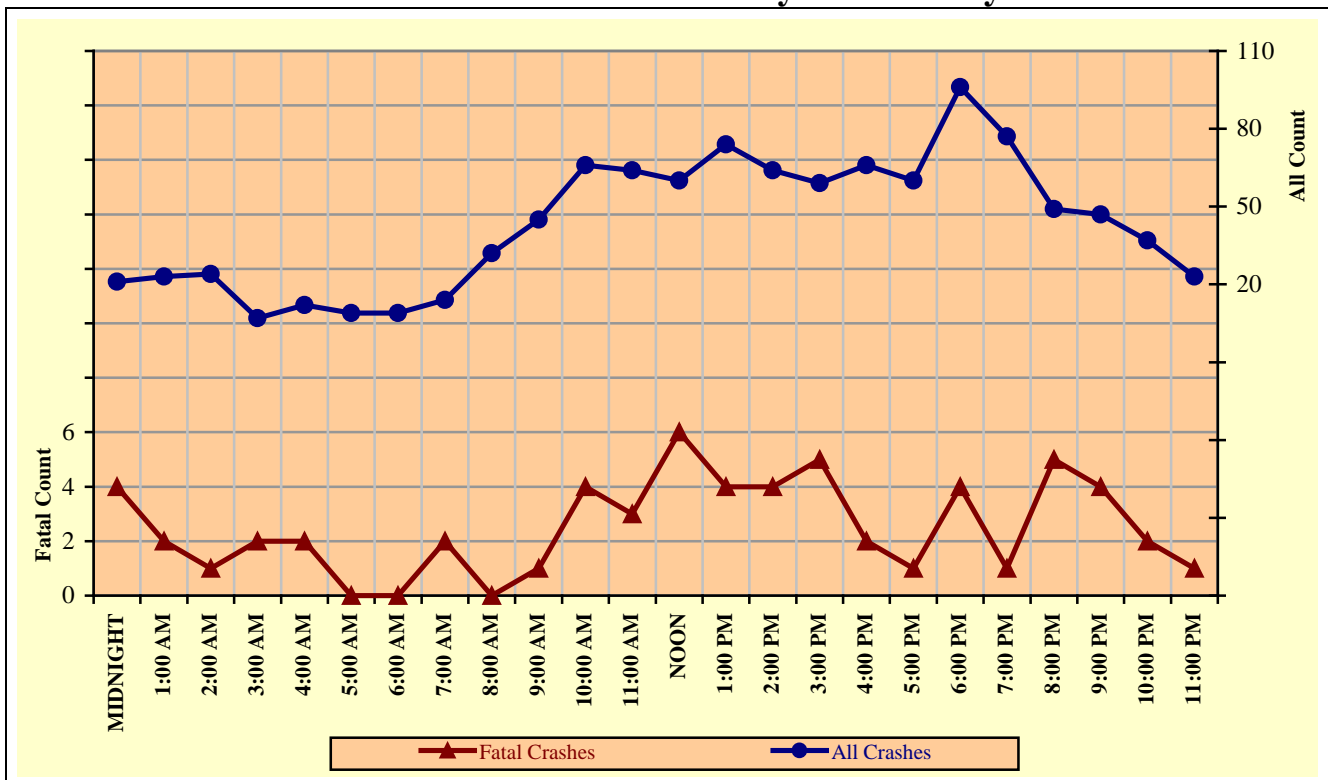


Chart 8 - 7

All MC Crashes vs. Fatal MC Crashes by Day of Week

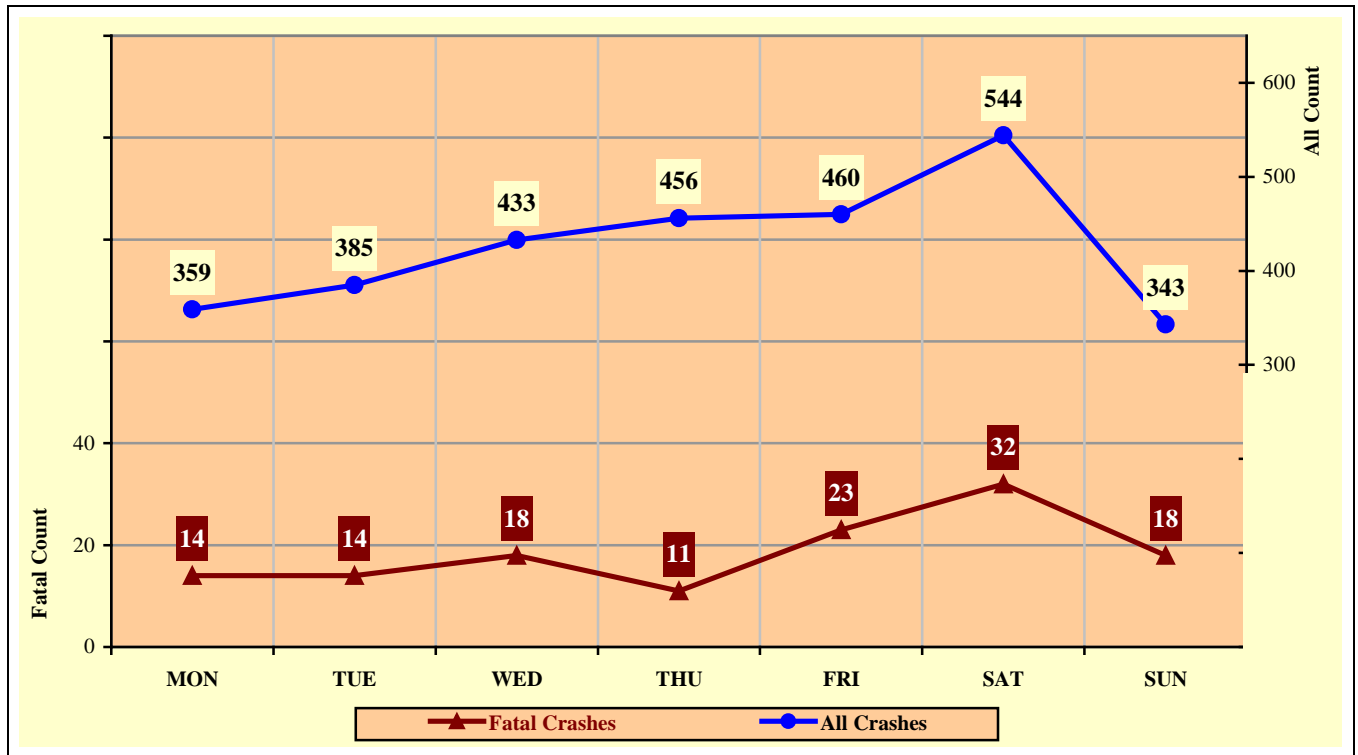
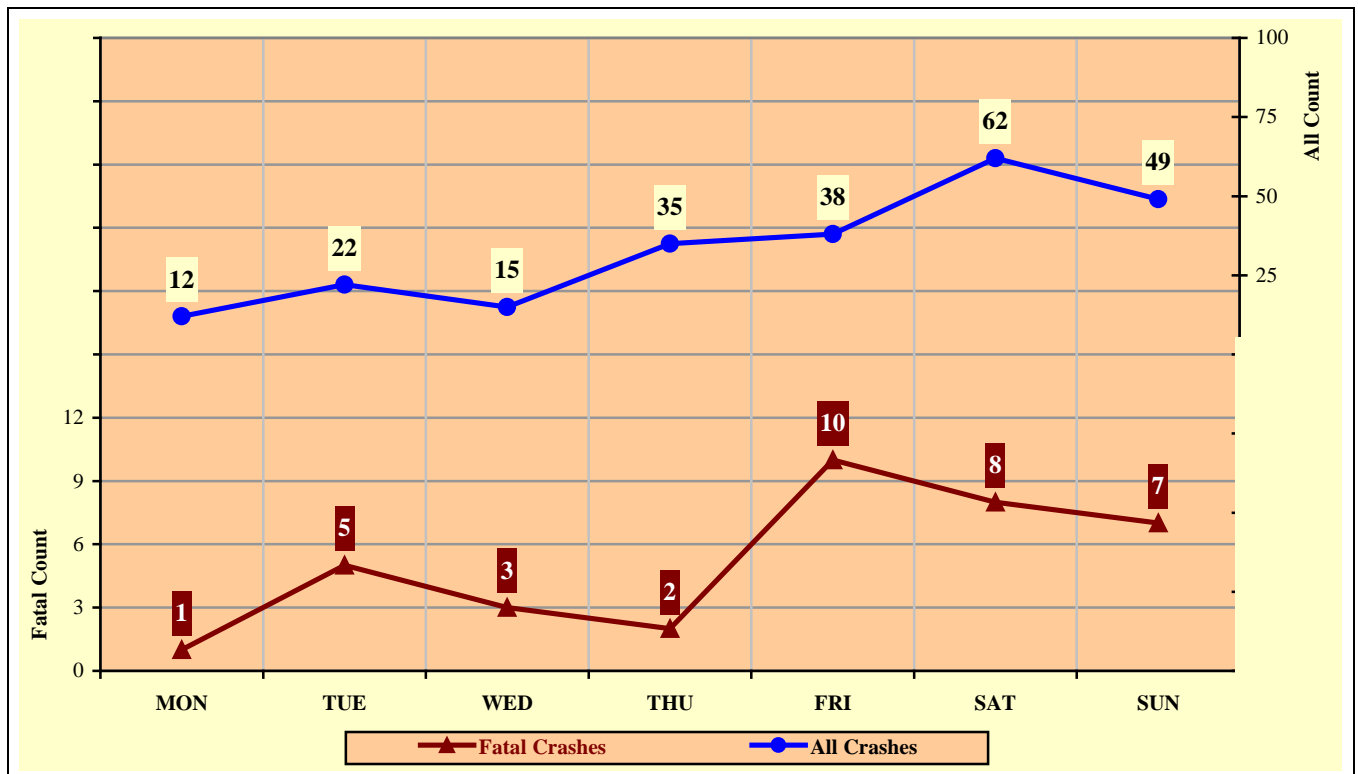


Chart 8 - 8

Alcohol Related MC Crashes vs. Fatal Alcohol Related MC Crashes by Day of Week



Section 8: – Motorcycle (MC) Crashes

Table 8 - 12

MC Crashes by Hour and Day of Week

Hour Beginning	Total Crashes		Monday		Tuesday		Wednesday		Thursday		Friday		Saturday		Sunday		Weekdays		Weekends	
	All	Fatal	All	Fatal	All	Fatal	All	Fatal	All	Fatal	All	Fatal	All	Fatal	All	Fatal	All	Fatal	All	Fatal
MIDNIGHT	35	5	0	0	2	0	5	1	5	0	2	0	11	3	10	1	14	1	21	4
1:00 AM	41	2	1	0	4	0	2	0	6	0	6	0	6	1	16	1	18	0	23	2
2:00 AM	36	3	6	0	5	1	1	1	5	0	1	0	11	1	7	0	12	2	24	1
3:00 AM	12	2	0	0	0	0	3	0	1	0	1	0	3	0	4	2	5	0	7	2
4:00 AM	27	4	3	1	3	0	5	1	3	0	4	1	5	1	4	0	15	2	12	2
5:00 AM	38	0	2	0	7	0	7	0	9	0	6	0	4	0	3	0	29	0	9	0
6:00 AM	92	1	20	0	12	1	24	0	18	0	9	0	6	0	3	0	83	1	9	0
7:00 AM	117	4	19	1	17	0	31	1	20	0	16	0	11	1	3	1	103	2	14	2
8:00 AM	129	3	18	0	20	1	19	0	23	1	17	1	22	0	10	0	97	3	32	0
9:00 AM	119	5	16	2	16	0	10	1	16	1	16	0	30	1	15	0	74	4	45	1
10:00 AM	144	9	11	2	20	0	14	0	8	0	25	3	42	2	24	2	78	5	66	4
11:00 AM	177	4	16	0	15	0	27	1	26	0	29	0	37	3	27	0	113	1	64	3
NOON	184	8	16	0	30	0	35	1	21	0	22	1	26	3	34	3	124	2	60	6
1:00 PM	197	8	23	0	25	0	24	1	22	0	29	3	54	3	20	1	123	4	74	4
2:00 PM	191	12	23	0	22	2	25	2	34	3	23	1	40	2	24	2	127	8	64	4
3:00 PM	242	8	36	0	39	0	28	1	33	0	47	2	32	3	27	2	183	3	59	5
4:00 PM	250	9	33	3	23	0	41	1	52	2	35	1	41	2	25	0	184	7	66	2
5:00 PM	255	9	37	0	37	3	47	2	41	2	33	1	33	1	27	0	195	8	60	1
6:00 PM	215	9	21	0	32	2	34	2	32	1	44	1	32	2	20	1	119	5	96	4
7:00 PM	153	3	17	1	20	0	15	1	24	0	27	0	34	1	16	0	76	2	77	1
8:00 PM	111	10	19	3	14	2	14	0	15	0	20	5	22	0	7	0	62	5	49	5
9:00 PM	95	6	9	0	8	1	10	0	21	1	24	1	14	1	9	2	48	2	47	4
10:00 PM	74	4	7	1	9	0	8	1	13	0	12	1	20	1	5	0	37	2	37	2
11:00 PM	46	2	6	0	5	1	4	0	8	0	12	1	8	0	3	0	23	1	23	1
TOTAL	2,980	130	359	14	385	14	433	18	456	11	460	23	544	32	343	18	1,942	70	1,038	60

Crashes during Weekends accounted for 34.83% of all MC crashes and 46.15% of Fatal MC Crashes.

Crashes during Weekdays accounted for 65.17% of all MC crashes and 53.85% of Fatal MC Crashes.

Acknowledgements

Special gratitude to our other providers of data and information including:

The National Center for Statistics and Analysis, Research and Development

National Highway Transportation Safety Administration

The Arizona State Data Center, Arizona Department of Economic Security

*The Office of Planning, Evaluation, and Public Health Statistics, Arizona
Department of Health Services*

The Information Technology Group, Arizona Department of Transportation

The National Safety Council