

Graham County Alternate Route Study

TAC Meeting – 2

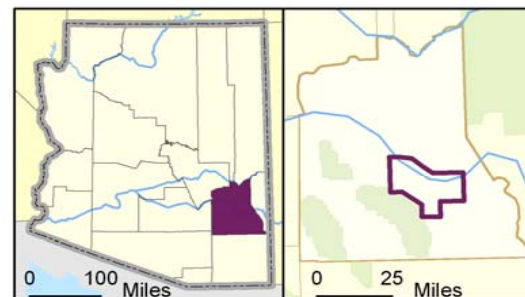
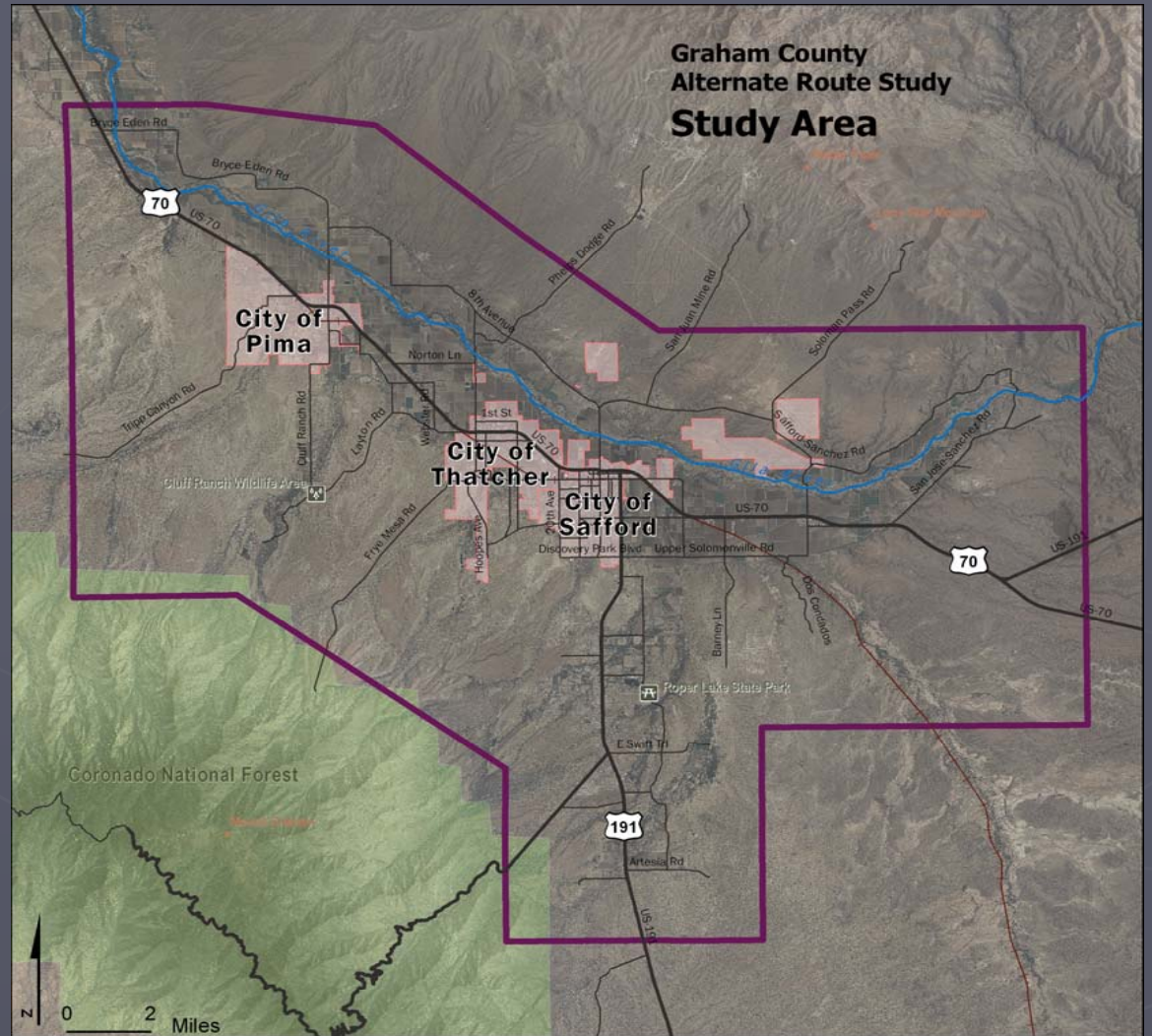
July 22, 2008

Meeting Agenda

- ▶ Introductions
- ▶ Project Overview
- ▶ Study Process and Deliverables
- ▶ Review Current and Future Conditions
(Working Paper No. 1)
- ▶ Schedule

Project Overview

- ▶ Study Area
 - Includes Graham Co, Safford, Thatcher & Pima Planning Areas
- ▶ Horizon Years: 2020, 2030, 2040
- ▶ Alternate Route Corridors
 - US70 / US191 Connections



Legend

- State maintained roadway
- Other roadways
- Railroad
- ~ River
- Incorporated area
- Study area

Study Process

- ▶ Identify Study Area
- ▶ Current and Future Conditions (Working Paper 1)
 - To collect and incorporate background info to create a picture of the current and future conditions within the study area, including:
 - ▶ Land use patterns
 - ▶ Travel data
 - ▶ Road conditions
 - ▶ Crash history
 - ▶ Levels of service
 - ▶ Socioeconomic characteristics
- ▶ Public Involvement
 - Open house public meeting

Study Process

- ▶ Determination of Need and Feasibility (Working Paper 2)
 - To identify the need & possible location of the alternate route, as well as identify fatal flaws
- ▶ Public Involvement
 - Open house public meeting
- ▶ Preferred Corridor Alternative (Working Paper 3)
 - To document the preferred corridor and type of facility (design speed, typical section, etc) needed to meet the project objectives and travel demand
- ▶ Final Report and Recommendations

Review of Current & Future Conditions (Working Paper 1)

▶ Studies and Source Data

■ Completed Studies:

- ▶ 1998 Graham Co Regional Transportation Study
- ▶ Globe-New Mexico Multimodal Corridor Profile (2002)
- ▶ City of Safford Transportation Study (2007)
- ▶ US 191 DCR, Traffic Projections and Growth Analysis (2007)
- ▶ Graham Co Transit Feasibility Review (2007)
- ▶ City of Safford General Plan (2004)

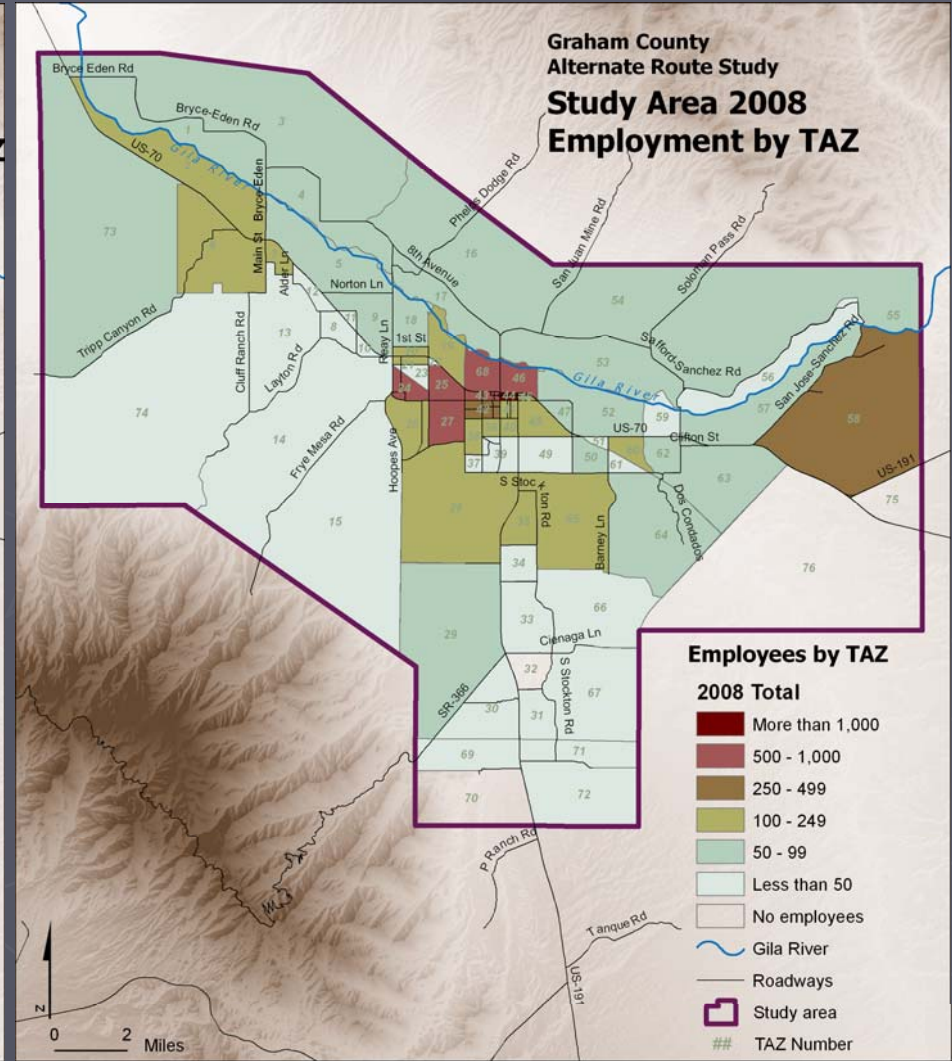
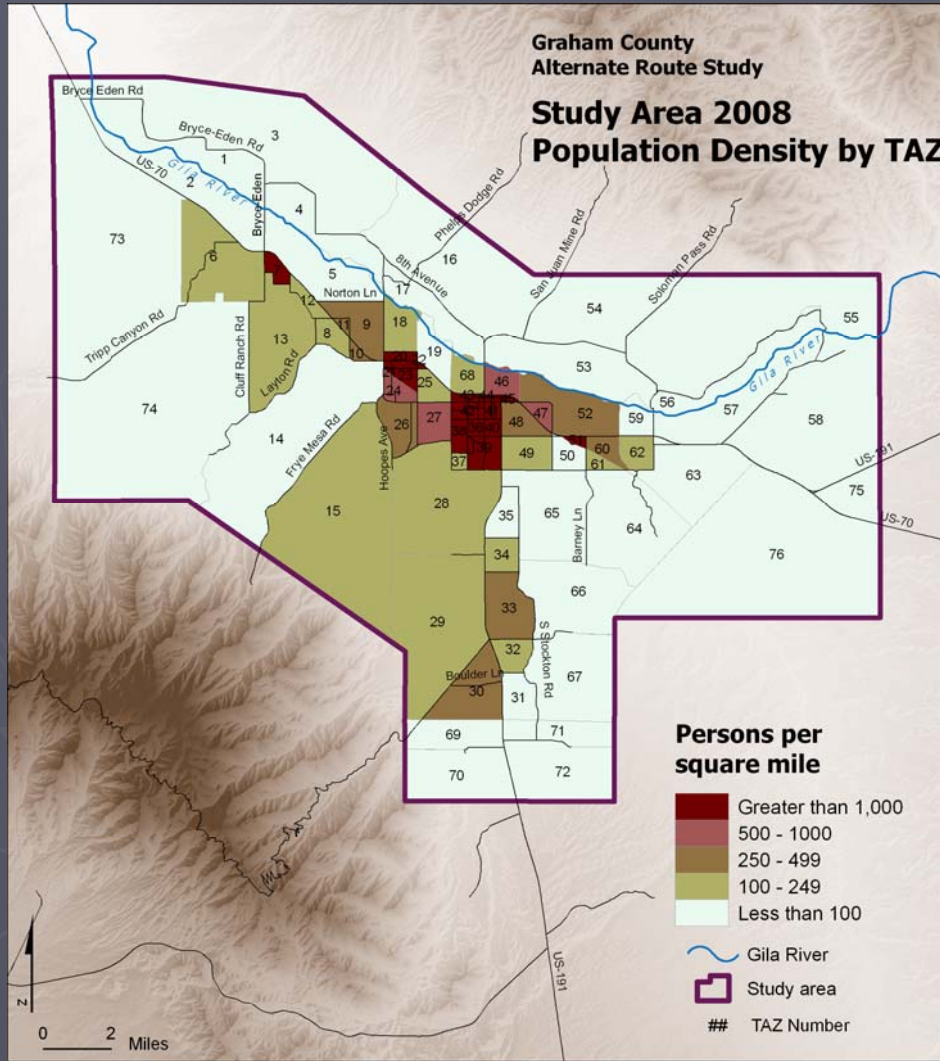
■ Ongoing Studies:

- ▶ Eastern Framework Study
- ▶ Graham Co SATs

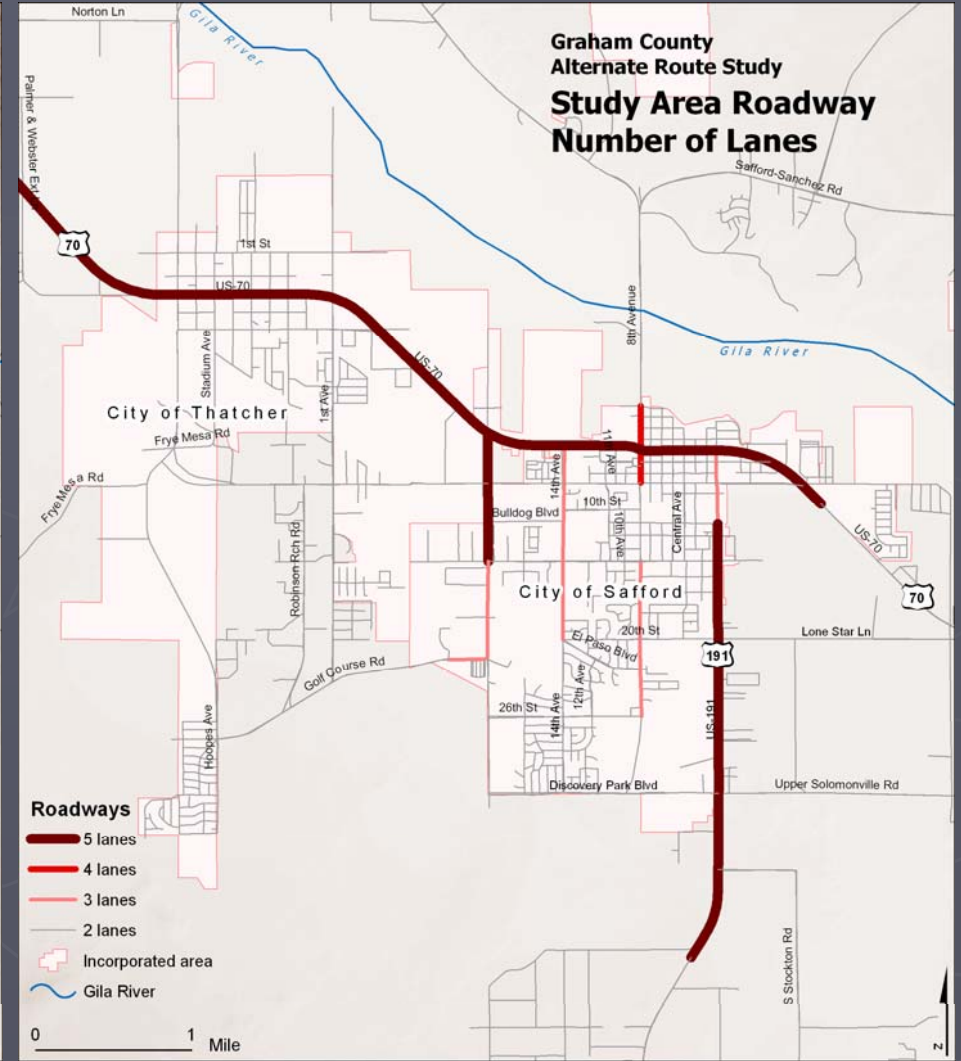
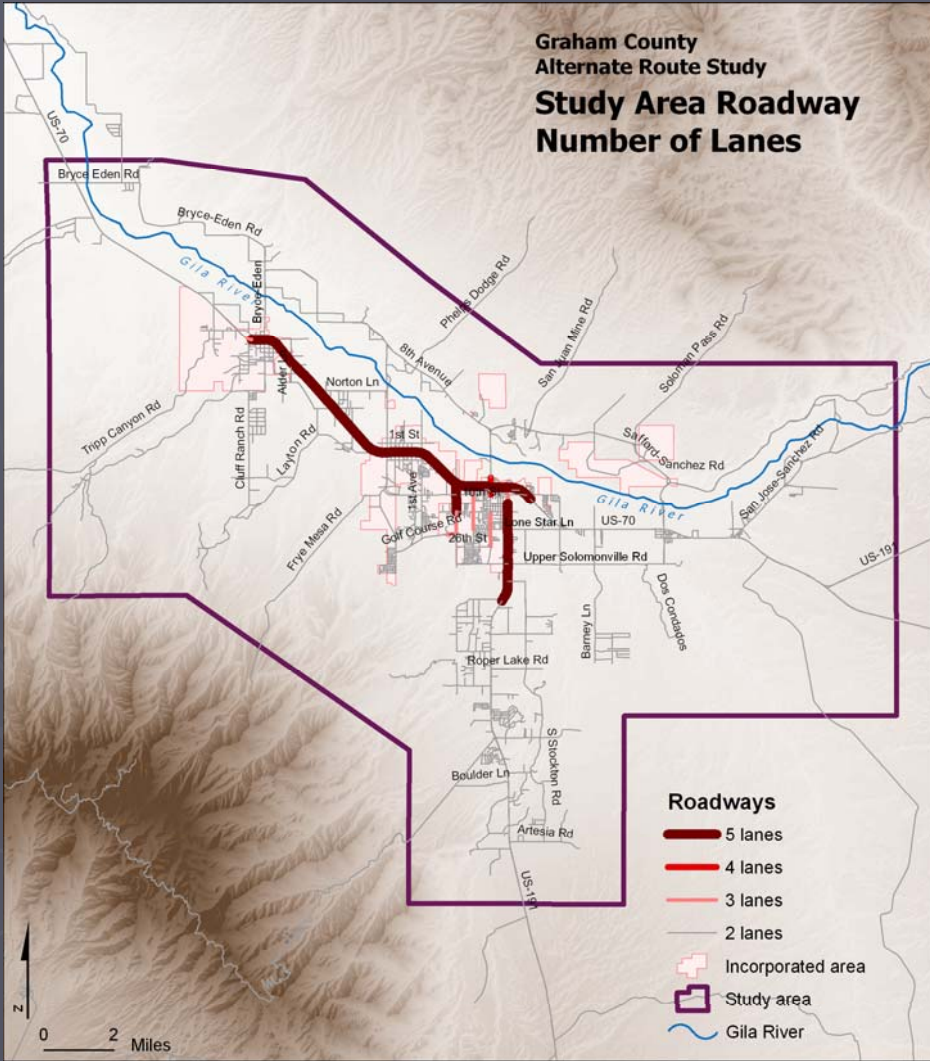
■ Future Studies:

- ▶ None currently identified

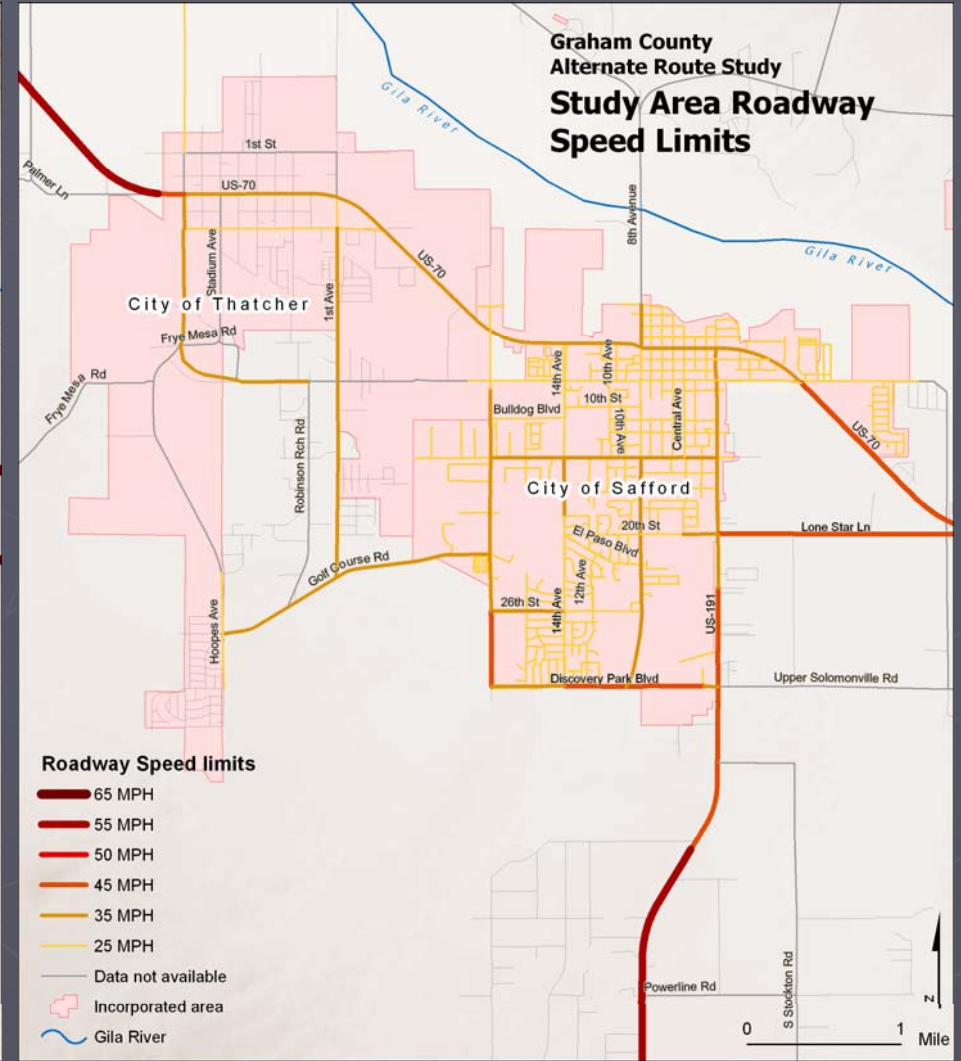
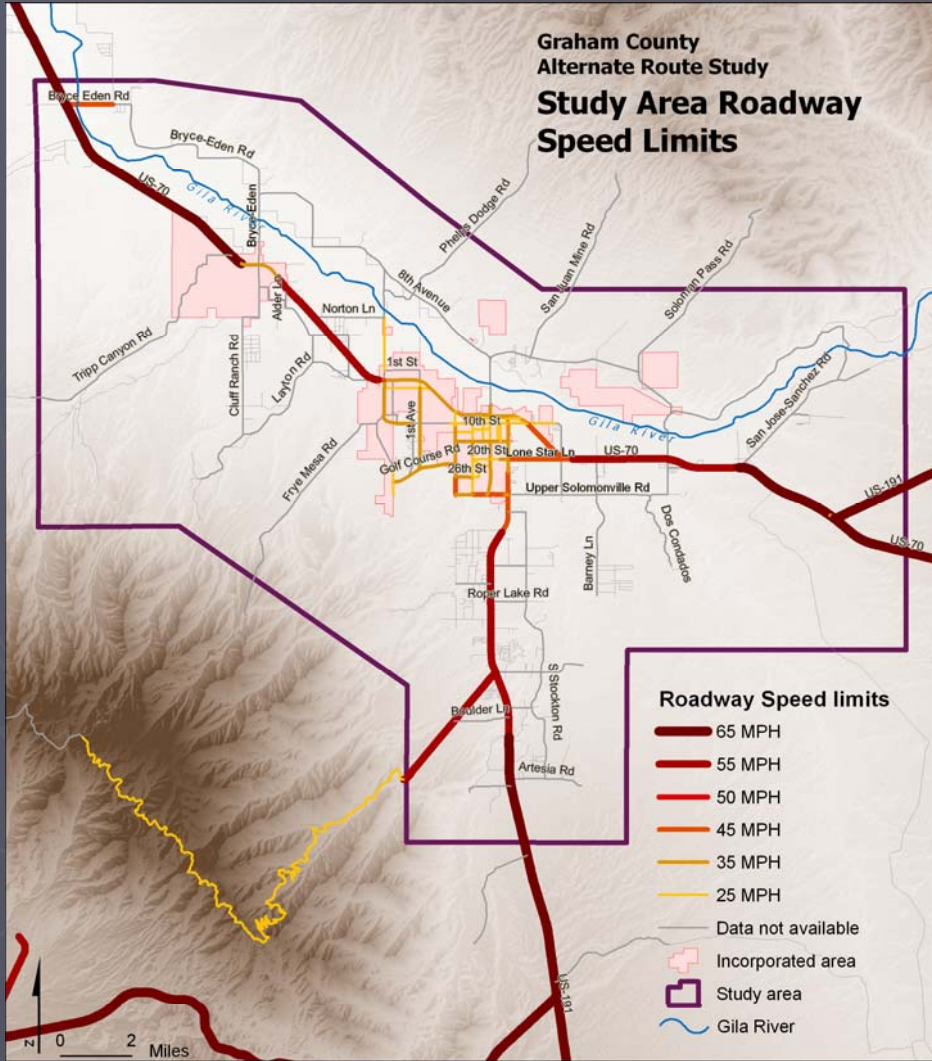
Review of WP1 Maps



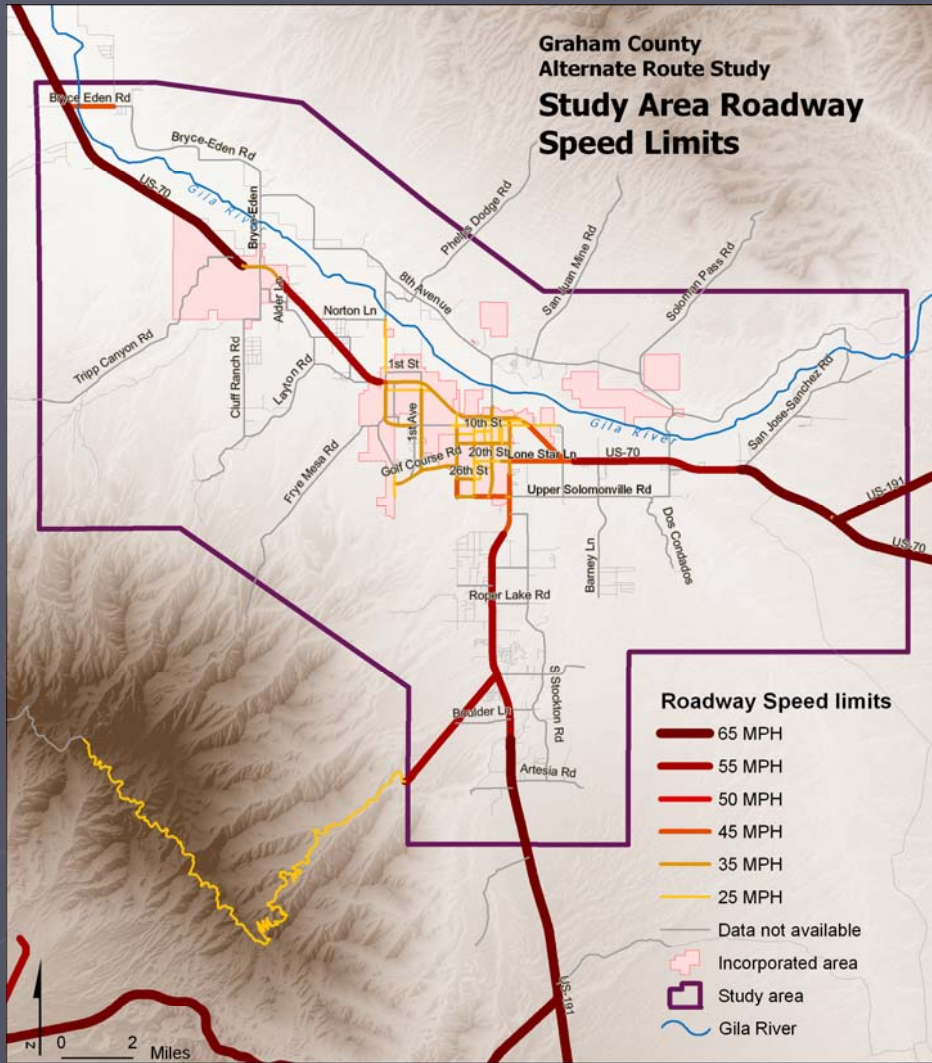
Review of WP1 Maps



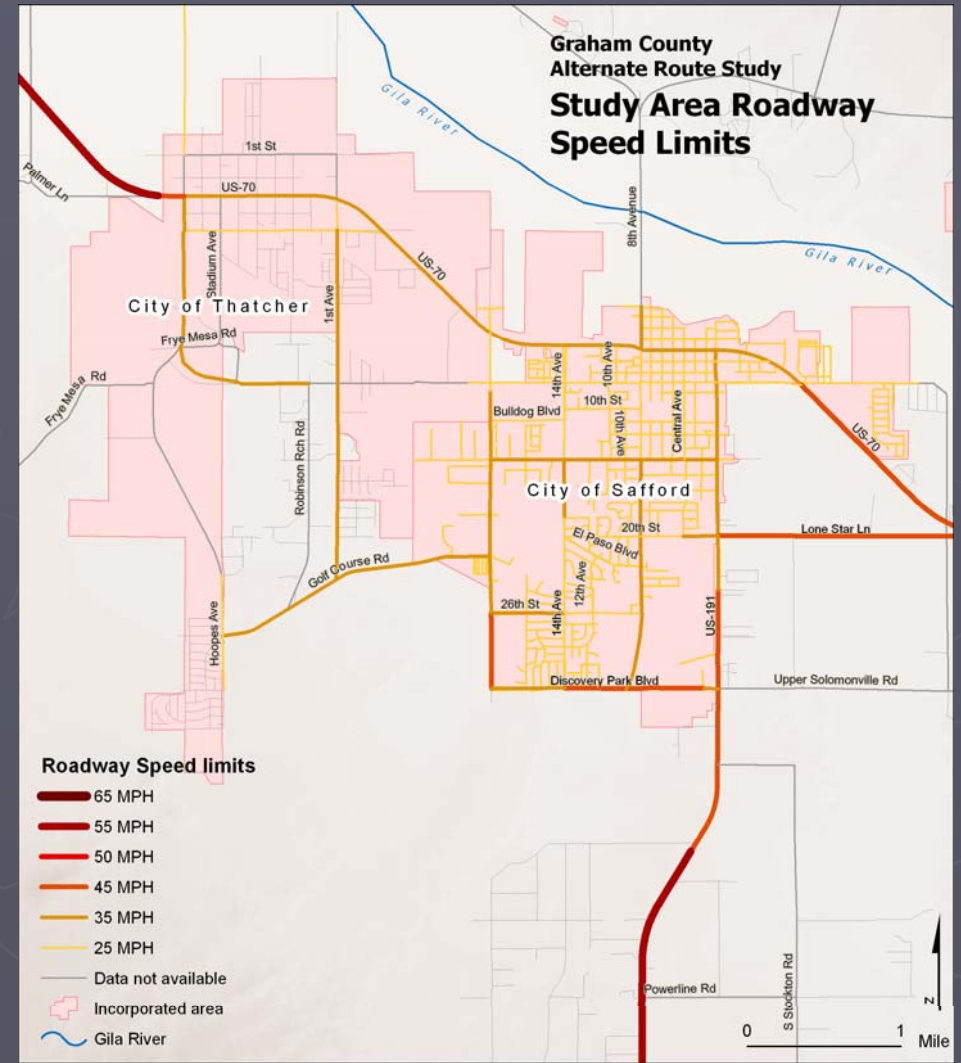
Review of WP1 Maps



Review of WP1 Maps

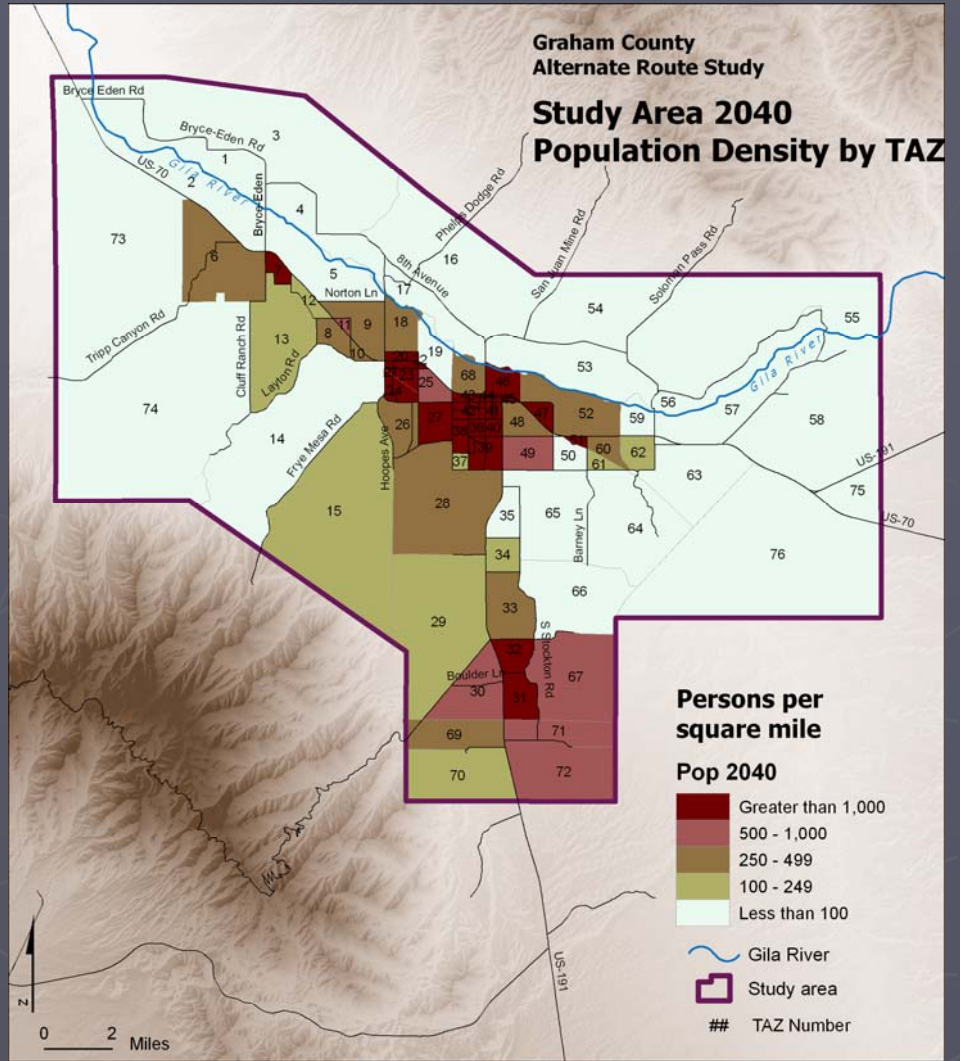
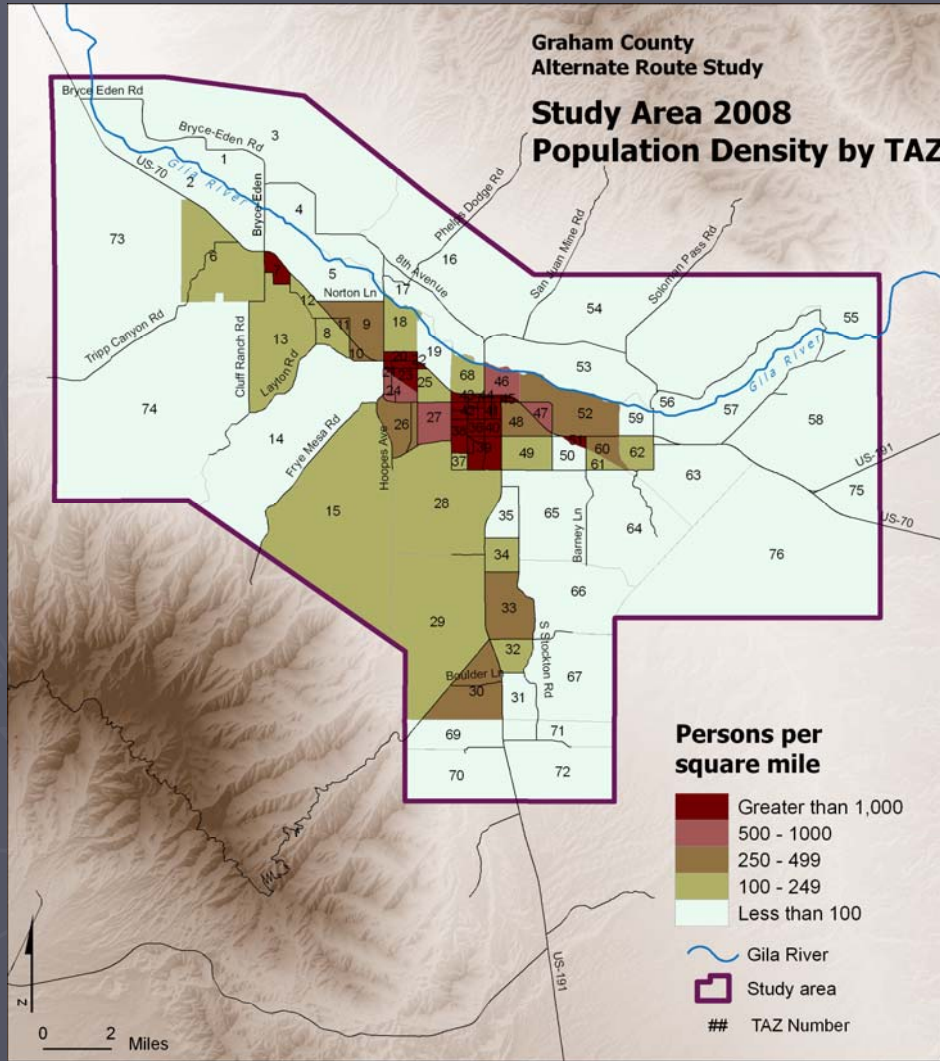


06/25/2008

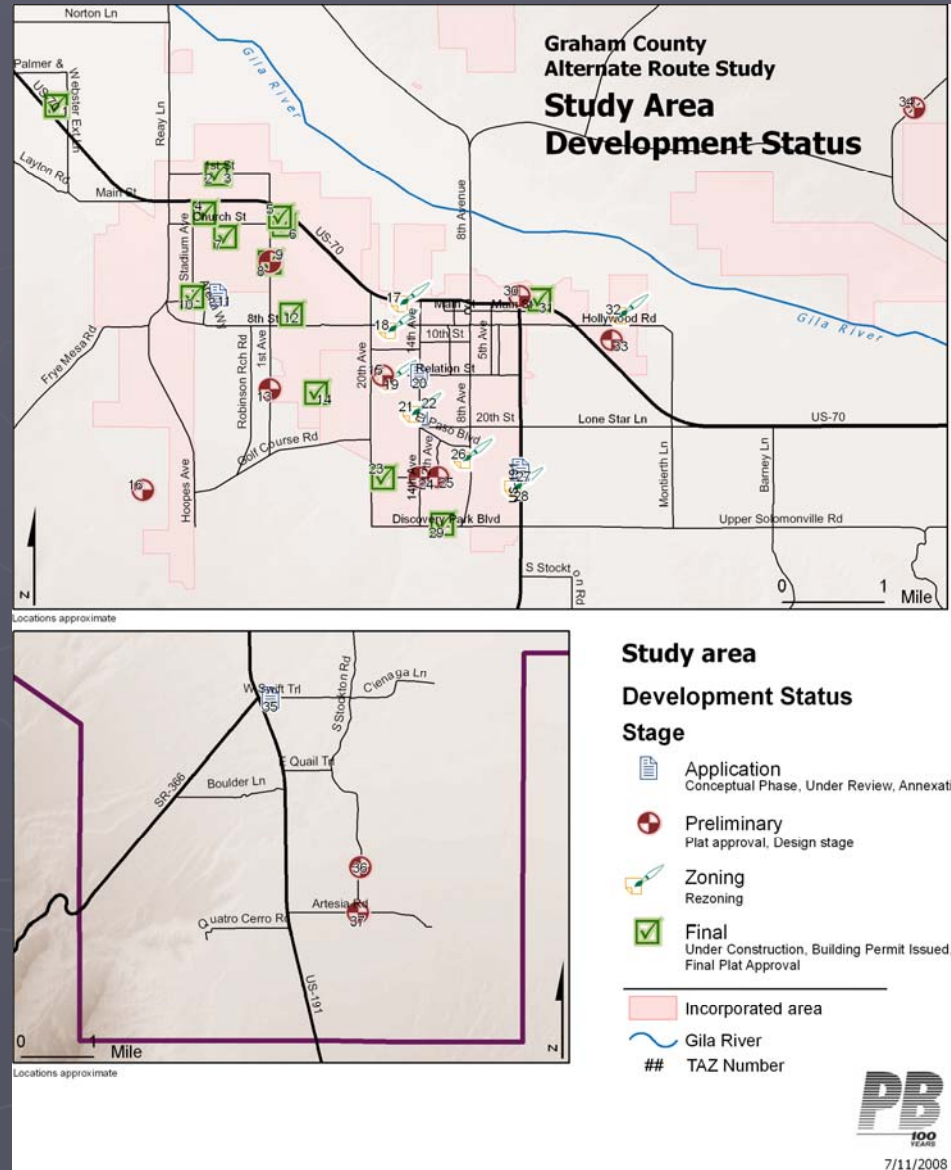


06/25/2008

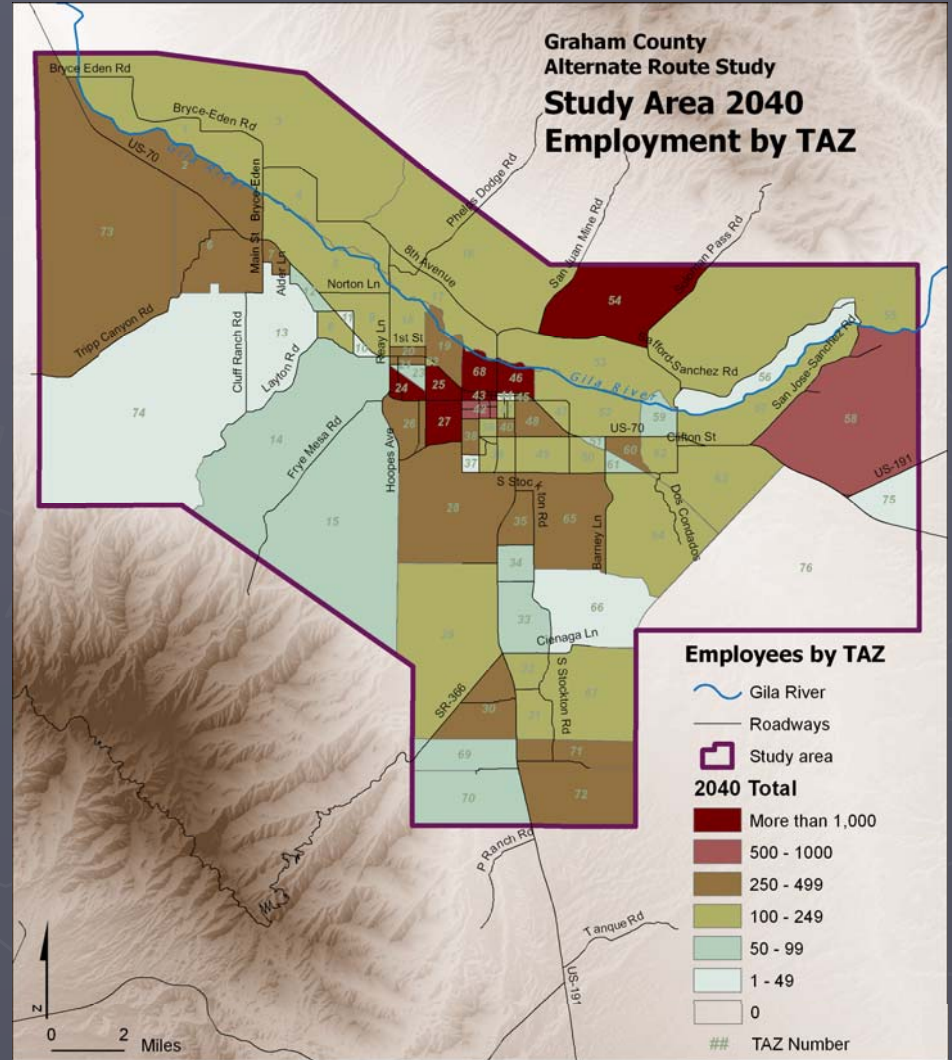
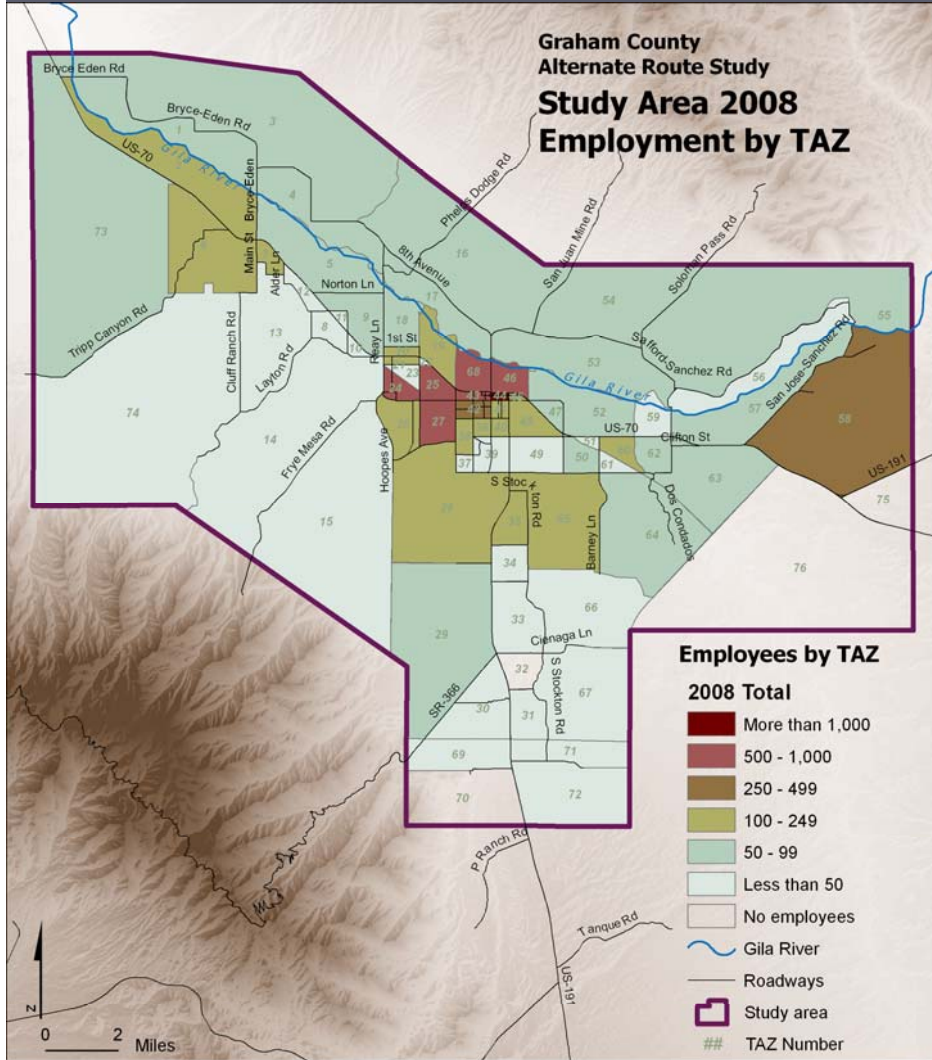
Review of WP1 Maps



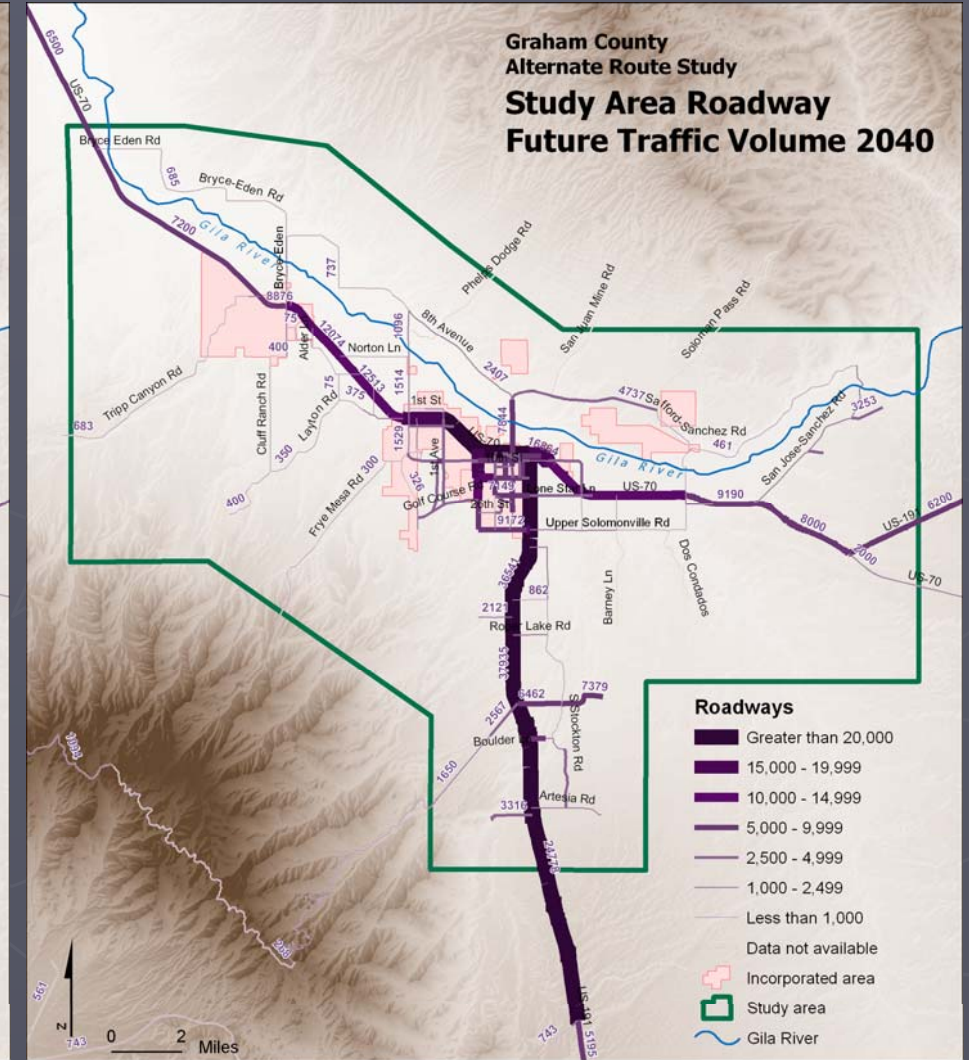
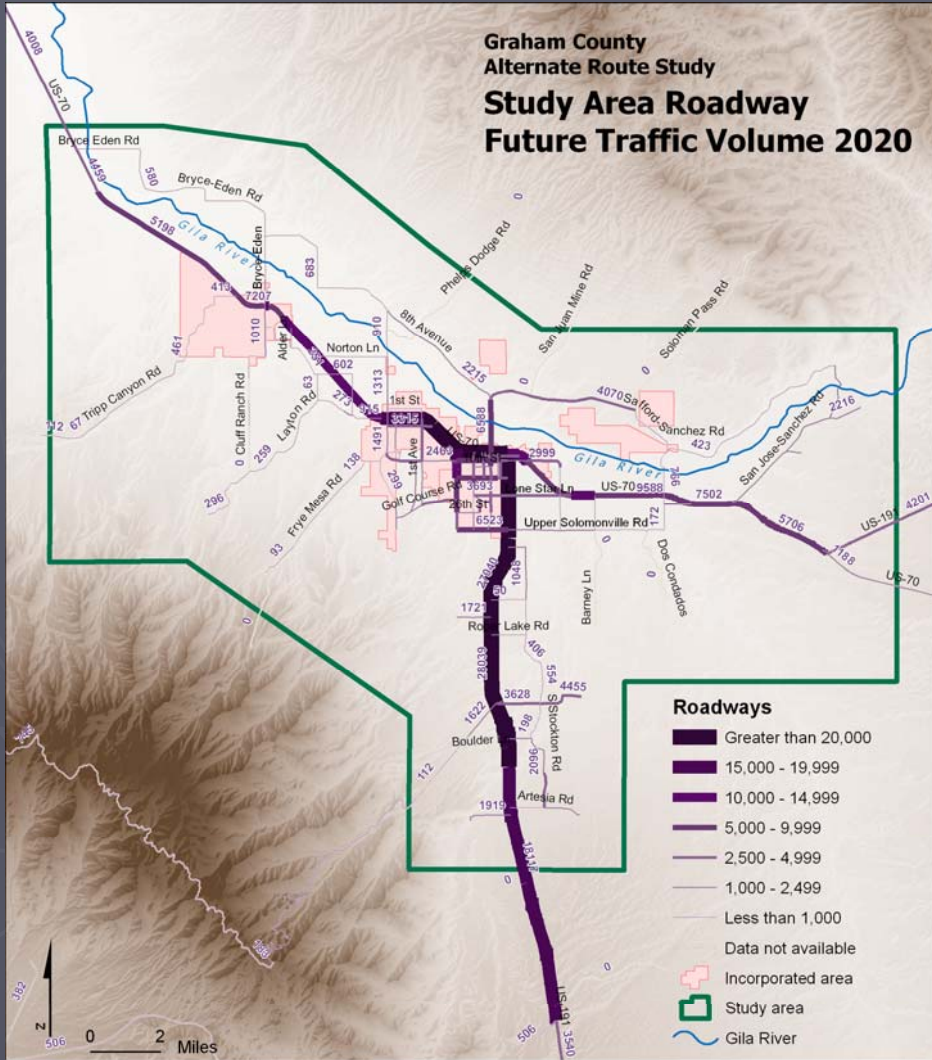
Review of WP1 Maps



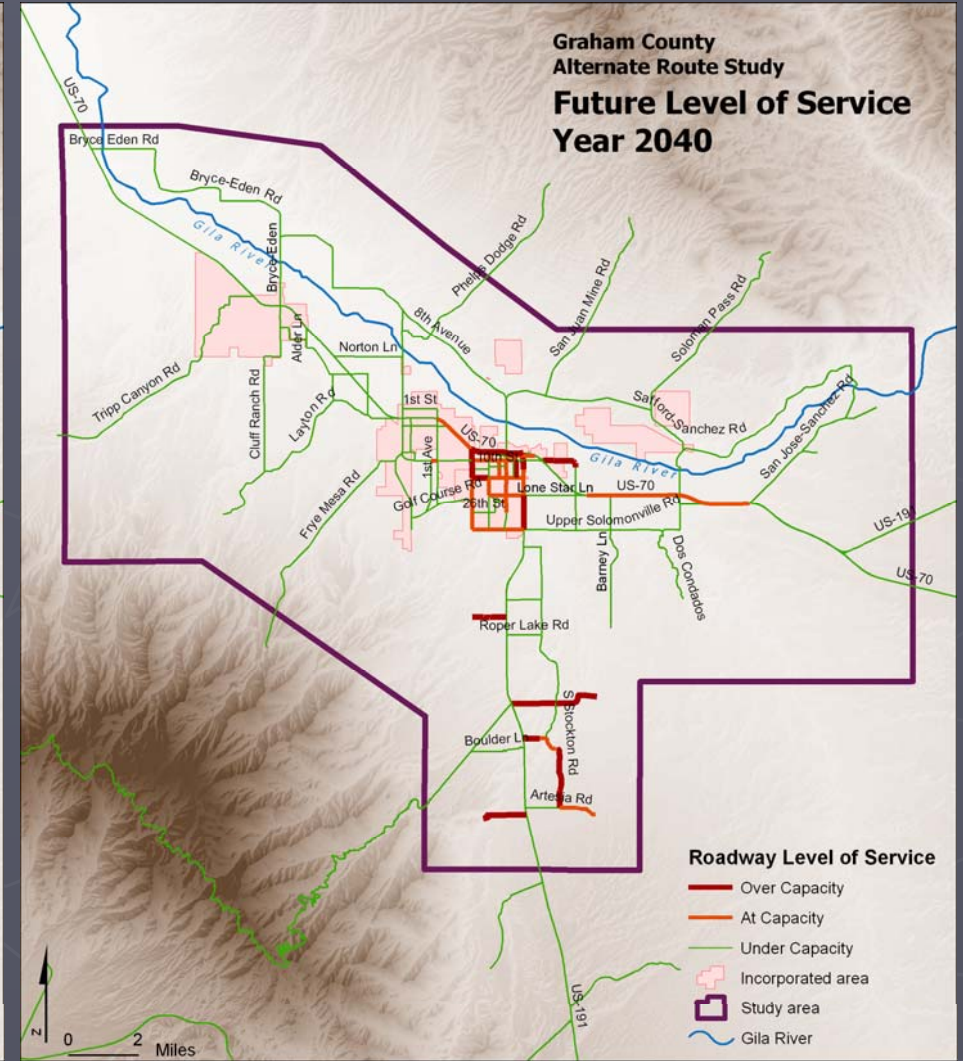
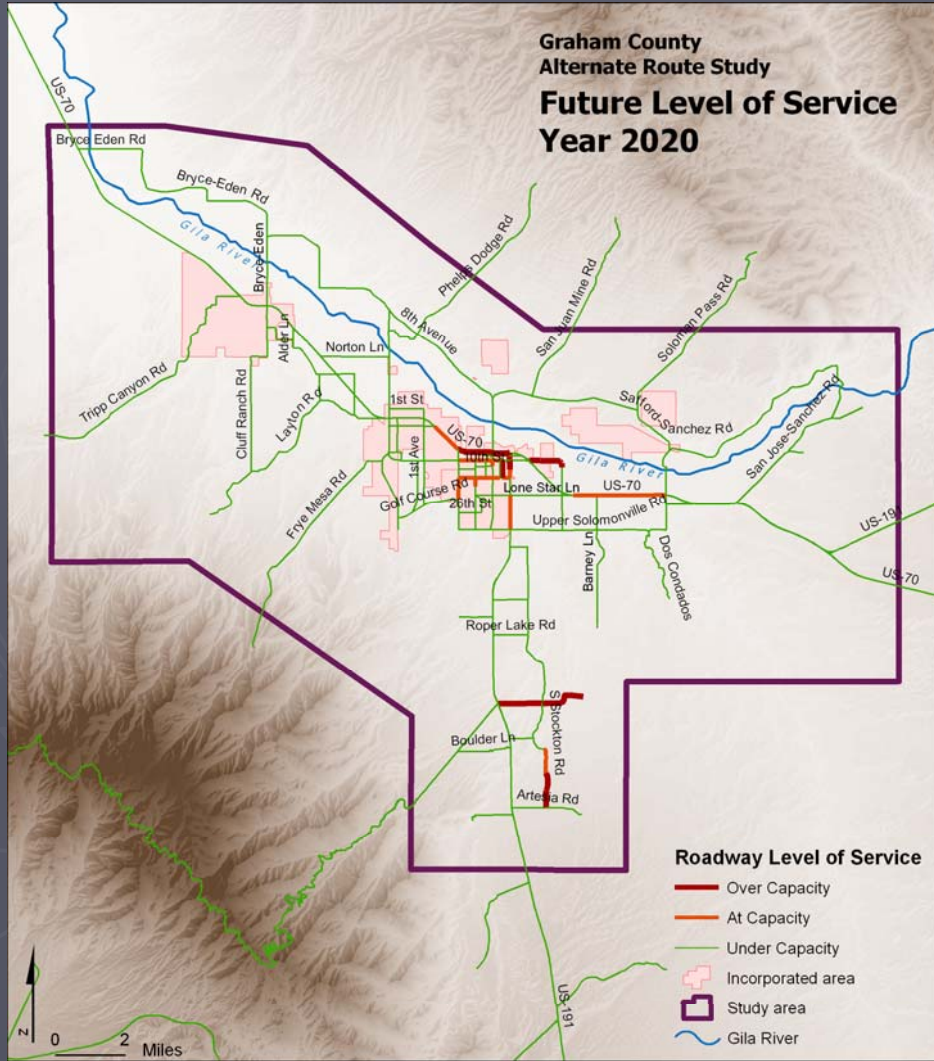
Review of WP1 Maps



Review of WP1 Maps



Review of WP1 Maps



Corridor Activity

- ▶ Welker Farms Development
- ▶ US 191 DCR Status
- ▶ Other Developments?

Where we're going from here - Project Schedule

- ▶ Working Paper 1: Existing and Future Conditions
 - July 2008
- ▶ Public Open House
 - July 28 – August 8, 2008 (with Graham Co. SATs)
- ▶ Working Paper 2: Determination of Need and Feasibility
 - September 2008
- ▶ Public Open House