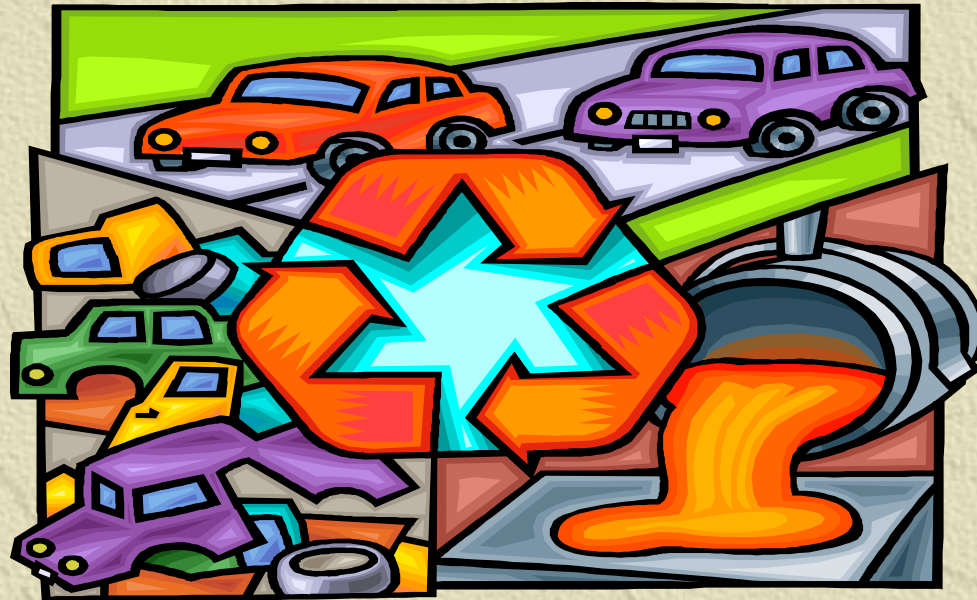
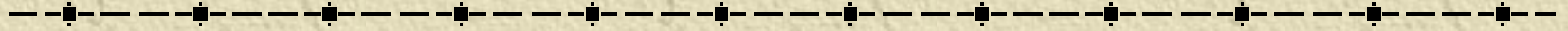


# Environment: Planning and Project Delivery



# PLANNING PROCESS

---

## ✦ Metropolitan Planning Organizations

- ◆ Key changes
- ◆ TIP
- ◆ Long Range Planning
- ◆ Implementation

## ✦ State Planning

- ◆ Key changes
- ◆ STIP
- ◆ Long Range Planning
- ◆ Implementation



# Metropolitan Planning Organizations Transportation Planning

- ✦ Takedown has been increased to 1.25%
- ✦ Funds based on population in urbanized areas or portion of urbanized areas



# Metropolitan Planning Organizations Planning Process

- ✦ MPOs encouraged to work with officials responsible for other types of planning
- ✦ Safety and security of the transportation system are separate planning factors
- ✦ States have 30 days to reimburse an MPO for planning expenses after request is made



# Metropolitan Planning Organizations Long Range Transportation Plan

- ✦ Must be updated at least every four years in non-attainment and maintenance areas
- ✦ Develop a discussion with Federal, state and tribal wildlife, land management and regulatory agencies on potential environmental mitigation activities & locations
- ✦ Include transit operators in cooperative development of funding estimates
- ✦ Intermodal connectors added as a transportation facility.



# Metropolitan Planning Organizations Long-Range Transportation Plan

- 
- ✦ Inter-agency collaboration required in plan development under an MPO Participation Plan
  - ✦ Participation Plan components:
    - ◆ Public Meetings
    - ◆ Visualization Techniques
    - ◆ Electronic Circulation of Information



# Metropolitan Planning Organizations Transportation Improvement Program

---

✦ Must be updated every four years

✦ Must contain the following:

- ◆ A priority list of projects and strategies
- ◆ A financial plan
- ◆ A description of each project in the TIP



✦ Investments in pedestrian walkways and bicycle transportation facilities are to be included in the published annual listing of projects

# Metropolitan Planning Organizations Implementation

---

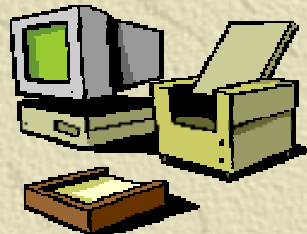
- ✦ USDOT will provide guidance on a schedule for implementation
- ✦ States and MPOs are not required to deviate from the plan and program update cycles to implement these changes
- ✦ Program updates for MPOs shall reflect changes beginning July 1, 2007



# Statewide Transportation Plan

✦ Key changes to statewide transportation planning in general include:

- ✦ Coordinate with metropolitan planning AND statewide trade and economic development
- ✦ 2 or more states may enter into planning agreements or compacts
- ✦ Consider and implement projects that support economic vitality of non-metropolitan areas



# Statewide Transportation Plan

- ◆ Safety and security are SEPARATE planning factors
- ◆ Promote consistency between transportation improvements and State and local planned growth and economic development patterns
- ◆ Coordination of planning activities between States





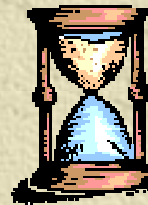
# Long-Range Statewide Transportation Plan



---

## ✦ Key changes:

- ◆ Consultation with State, tribal and local agencies responsible for land use management
- ◆ Consultation must involve comparison of transportation plans to conservation plans or maps and to inventories of natural or historic resources



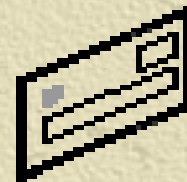
# Long-Range Statewide Transportation Plan

- ◆ Include discussion of potential environmental mitigation activities
- ◆ Include capital, operations, and management strategies to ensure preservation and efficient use of existing transportation system
- ◆ Planning process must include representatives from users of pedestrian walkways, bicycle facilities, and the disabled



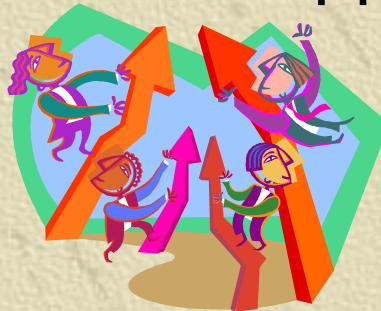
# Long-Range Statewide Transportation Plan

- ◆ Public meetings should be conducted
  - Convenient and accessible locations
  - Convenient times
  - Employ visual techniques to describe plans
  - Make public information accessible in electronic format
- ◆ Plan should be published or available electronically



# State Transportation Improvement Program

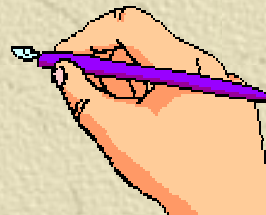
- ✦ Must cover 4 years and be updated every 4 years
- ✦ Planning process must include representatives from users of pedestrian walkways, bicycle facilities, and the disabled
- ✦ Shall include annual list of projects for which funds were obligated in the preceding year
- ✦ Shall be reviewed and approved every 4 years



# State Transportation Improvement Program Implementation

---

- ✦ USDOT will issue guidance on schedule for implementation of the changes
- ✦ State will not be required to deviate from their established plan and program update cycles to implement changes
- ✦ State plan or program updates shall reflect the changes on July 1, 2007



# Project Delivery and Environment

- ✦ Environmental Reviews
- ✦ Categorical Exclusions
- ✦ Noxious Weeds and Native Species
- ✦ Exemption of Interstate System
- ✦ Natural Resource Concerns and Project Planning
- ✦ Parks, Recreation Areas, Wildlife & Waterfowl Refuges, & Historic Sites
- ✦ Environmental Review & Intelligent Transportation Systems
- ✦ Transportation Conformity
- ✦ Air Quality Monitoring



# Environmental Reviews

---

- ✦ New section added to statute – Efficient environmental reviews for project decision making
- ✦ Definitions-
  - ◆ Environmental Impact Statement- The detailed statement of environmental impacts required to be prepared under the National Environmental Policy Act of 1969.





# Environmental Reviews

- ◆ Environmental Review Process- The process for preparing for a project an environmental impact statement, environmental assessment, categorical exclusion, or other document prepared under the National Environmental Policy Act of 1969.
  - Includes a process for and completion of any environmental permit, approval, review or study required for a project under any Federal law other than the National Environmental Policy Act of 1969.

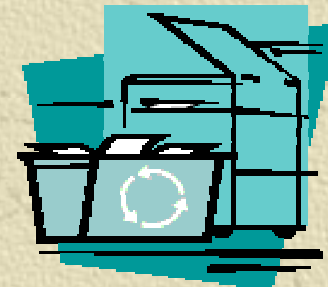


# Environmental Reviews

- 
- ◆ Multi-modal project- The term multimodal project means a project funded, in whole or in part, under Title 23 (Federal Highways section of law) or chapter 53 of Title 49 (Federal Transportation section, chapter on public transportation) and involving the participation of more than one Department of Transportation administration or agency.
  - ◆ Project – The term project means any highway project, public transportation capitol project, or multimodal project that requires the approval of the Secretary.

# Environmental Reviews

- ◆ Project sponsor – The term project sponsor means the agency or other entity, including any private or public-private entity that seeks approval of the Secretary for a project.
- ◆ State Transportation Department – The term State transportation department means any statewide agency of a State with responsibility for one or more modes of transportation.



# Environmental Reviews

- ✦ Applies to all projects requiring an Environmental Impact Statement under the National Environmental Policy Act of 1969.
- ✦ Establishes USDOT as the Federal lead agency
- ✦ Allows joint lead agencies
- ✦ Project sponsor (State or local government agency) serves as joint lead agency with USDOT



# Environmental Reviews

---

## ✦ Lead agency authority

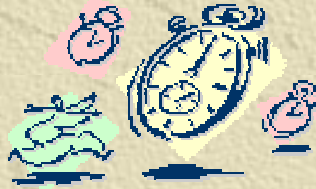
- ◆ Facilitate the review process
- ◆ Ensure documents meet requirements of law
- ◆ Inviting and designating participating agencies
- ◆ Establish plan to coordinate public and agency participation



# Environmental Reviews

◆ Establish deadlines for comments as follows:

- Draft EIS – not more than 60 days after publication in Federal register
- All other reviews no more that 30 days from availability of materials
- Deadlines for decisions under other laws such as permits or licenses – 180 days after final decisions of lead agency



# Environmental Reviews

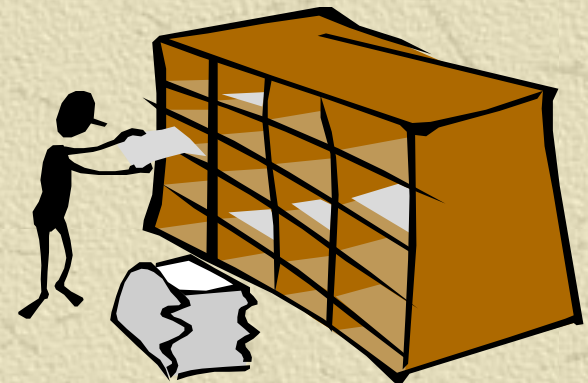
- ◆ Convene meeting of participating agencies to resolve issues at the request of project sponsor or Governor
- ✦ Requests for judicial review must be filed within 180 days after final approval published in Federal Register



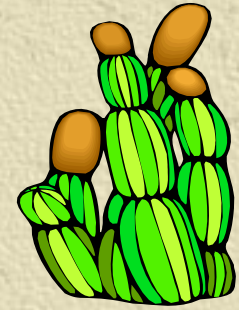
# Categorical Exclusions

---

- ✦ State may assume responsibility for categorical exclusions for EA and EIS
- ✦ USDOT must approve and designate the types of activities included
- ✦ USDOT and State enter into memorandum of understanding:
  - ✦ Not more than 3 years
  - ✦ Is renewable



# Noxious Weeds and Native Species



- ✦ Control of noxious weeds can be funded under National Highway System and Surface Transportation Programs
- ✦ Establishment of Native Species can be funded under National Highway System and Surface Transportation Programs



# Exemption of Interstate System

- ✦ Interstate in general is exempt from being considered a historic site
- ✦ USDOT will determine individual segments that have national or exceptional historic significance



# Natural Resources Concerns and Project Delivery

✦ Design Criteria for National Highway System has been expanded to include consideration of context sensitive solutions:

- ◆ Flexibility in Highway Design by the FHWA
- ◆ Eight Characteristics of Process to Yield Excellence in Transportation Design by the 1998 conference “Thinking Beyond the Pavement National Workshop on Integrating Highway Development with Communities and the Environment while Maintaining Safety and Performance
- ◆ Any other material that USDOT determines appropriate



# Parks, Recreation Areas, Wildlife and Waterfowl Refuges, and Historic Sites

---

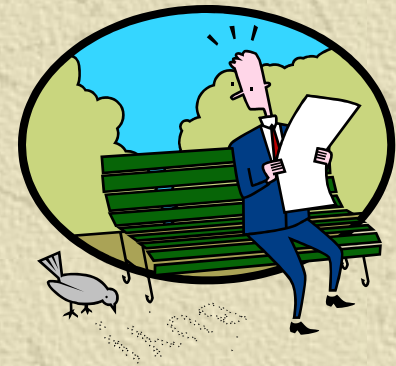
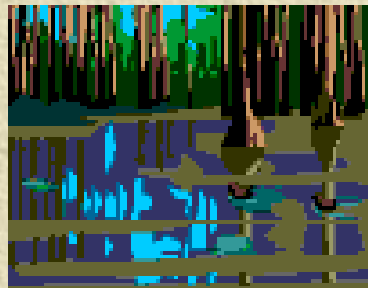
- ✦ The section of law on preservation of parklands is amended to include a new section “De Minimis Impacts”
- ✦ Requirement for De Minimus Impacts
  - ◆ Historic sites
    - USDOT determines the project will have no adverse effect or no historic property will be affected
    - USDOT receives written concurrence from the State or tribal historic preservation officer
    - The finding is in consultation with parties under the National Historic Preservation Act



# Parks, Recreation Areas, Wildlife and Waterfowl Refuges, and Historic Sites

---

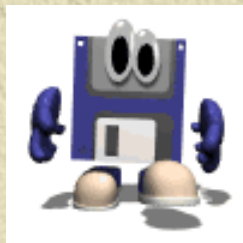
- ◆ Parks, Recreation Areas and Wildlife and Waterfowl Refuges
  - USDOT determines the project will not adversely affect activities, features, and attributes
  - USDOT receives concurrence from officials with jurisdiction over the area



# Environmental Review and Intelligent Transportation Systems

---

- ✦ USDOT will establish rules for categorical exclusions for activities that support the deployment of Intelligent Transportation Infrastructure and Systems
- ✦ Intelligent Transportation Infrastructure and Systems means fully integrated public sector intelligent transportation system components as defined by USDOT



# Transportation Conformity

✦ Air pollution, nonattainment area plans added an additional activity to the section on activities not conforming to approved or promulgated plans

◆ Appropriate MPO shall redetermine conformity of existing plans and programs not later than 2 years after the EPA:

- Finds motor vehicle emissions budget to be adequate
- Approves a plan that establishes a budget or
- Promulgates a plan that establishes or revises a budget



# Air Quality Monitoring



- ✦ Adds a new section on data influenced by exceptional events
- ✦ Exceptional event means an event that:
  - ◆ Affects air quality
  - ◆ Is not reasonably controllable or preventable
  - ◆ Is caused either human activity that is unlikely to recur or natural event
  - ◆ Is determined exceptional by EPA Administrator
  - ◆ Exclusions include stagnation of air masses or meteorological inversions, event involving high temperatures or lack of precipitation or air pollution relating to source non compliance

# Environment: Planning and Project Delivery

