

# HIGHWAY SAFETY IMPROVEMENT PROGRAM



# Purpose

- ✦ **The purpose of the Highway Safety Improvement Program is to achieve a significant reduction in traffic fatalities and serious injuries on public roads.**



# Funding

## ✦ Total Funding Available:

- ◆ FY 2006- \$1,235,810,000
- ◆ FY 2007- \$1,255,709,322
- ◆ FY 2008- \$1,275,929,067
- ◆ FY 2009- \$1,296,474,396





# **State Highway Safety Improvement Program**

- 
- 1. Develop and implement a State strategic highway safety plan that identifies and analyzes highway safety problems and opportunities.**
  - 2. Produce a program of projects or strategies to reduce identified safety problems.**
  - 3. Evaluate the plan regularly for accuracy and the establishment of priorities.**
  - 4. Submit an annual report to the Secretary of Transportation.**

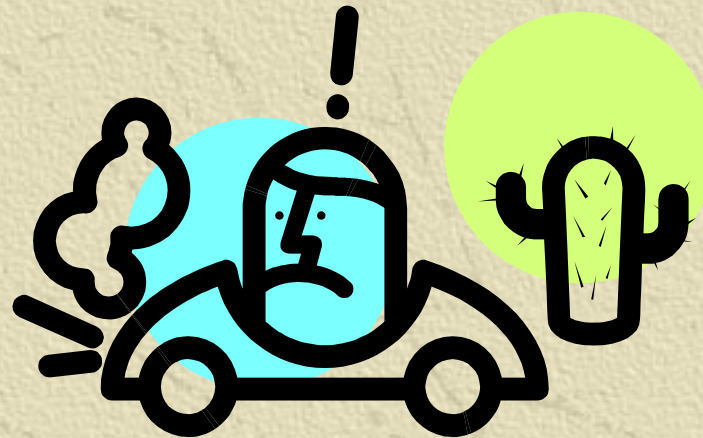
## State Strategic Highway Safety Plan

- ✦ To qualify for funding, Arizona must have a State Strategic Highway Safety Plan by October 1, 2007.



# State Strategic Highway Safety Plan

1. Establish a crash data system with the ability to perform safety problem identification and countermeasure analysis.



# State Strategic Highway Safety Plan

---

## 2. Use this analysis to identify hazardous locations sections and elements:

- ✦ Shall include the following:
  - ✦ Roadside obstacles,
  - ✦ Railway-highway crossing needs
  - ✦ Unmarked or poorly marked roads
  
- ✦ Determine the severity of these location in terms of accidents, injuries, deaths, traffic volume and other relevant data.



## State Strategic Highway Safety Plan

---

- 3. States must adopt strategic and performance-based goals to address these problem areas in coordination with other State highway safety programs.**
  - ◆ **Must address traffic safety, including behavioral and infrastructure problems and opportunities.**
  - ◆ **Must focus resources on areas of the greatest need.**
  - ◆ **Must be coordinated with other State highway safety programs.**



## State Strategic Highway Safety Plan

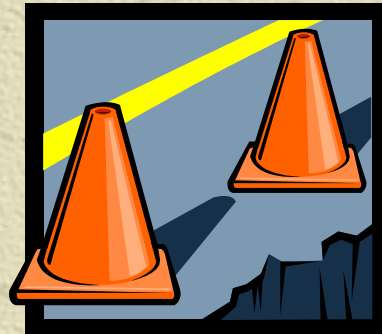
---

4. The plan must advance the capabilities of the state for data collection, analysis and integration with other sources of safety data.
  - ◆ Must complement existing State Highway Commercial Vehicle Safety Programs.
  - ◆ Must include all public roads.
  - ◆ Must identify hazardous locations, sections and elements that pose a danger to motorists.
  - ◆ Must include a means of identifying the severity of these hazardous locations.

# State Strategic Highway Safety Plan

---

5. **States shall determine priorities for the correction of hazardous road locations.**
  - ◆ Identify opportunities for preventing hazardous conditions.
  - ◆ Schedule highway safety improvement and hazard correction projects accordingly.



# State Strategic Highway Safety Plan

---

## 6. States shall establish an evaluation process.

- ◆ Analyze and assess results achieved by highway improvement projects.
- ◆ Set priorities for future highway improvement projects.



# State Strategic Highway Safety Plan

---

## 7. States must submit an annual report to the Secretary of Transportation:

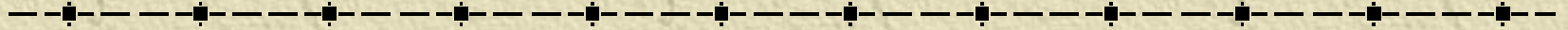
- ✦ Must describe not less than 5% of locations determined as exhibiting the most severe safety needs.
- ✦ Must contain an assessment of potential remedies to hazardous locations, estimated costs associated with those remedies and potential impediments to implementation.

# State Strategic Highway Safety Plan

---

- ✦ **States must also submit a report to the Secretary detailing the following items:**
  - ◆ **Progress of safety improvement projects.**
  - ◆ **The effectiveness of improvements.**
  - ◆ **The extent to which improvements have reduced fatalities, reduced injuries, reduced or mitigated roadway-related crashes and reduced crashes at railway-highway crossings.**

# Safe Routes to School



# Purpose

✦ The purpose of the program is to:

- ◆ Enable and encourage children, including those with disabilities to walk and bicycle to school;
- ◆ To make bicycling and walking to school a safer and more appealing transportation alternative, thereby encouraging a healthy and active lifestyle from an early age;
- ◆ To facilitate the planning, development, and implementation of projects and activities that will improve safety and reduce traffic, fuel consumption and air pollution in the vicinity of schools.

# Eligible Projects

---

## ✦ Infrastructure-Related Projects

- ◆ Sidewalk Improvements
- ◆ Traffic Calming Improvements
- ◆ Speed Reduction Improvements
- ◆ Pedestrian & Bicycle Crossing Improvements
- ◆ On-Street Bicycle Facilities
- ◆ Secure Bicycle Parking Facilities
- ◆ Traffic Diversion Improvements

# Eligible Projects

---

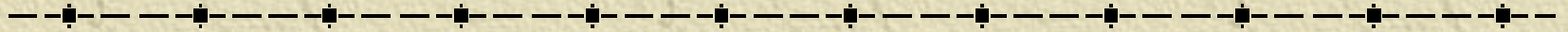
## ✦ Noninfrastructure-Related Projects:

- ◆ Public Awareness Campaigns
- ◆ Outreach to Press and Community Leaders
- ◆ Traffic Education & Enforcement
- ◆ Student Bicycle & Pedestrian Safety Sessions
- ◆ Health & Environment
- ◆ Volunteer Training
- ◆ Manager Training

# Safe Routes to School

- 
- ✦ To qualify under the Safe Routes to School Program, states must use a portion of their apportionment to fund a full-time coordinator for the program.

# Roadway Safety Improvement Program

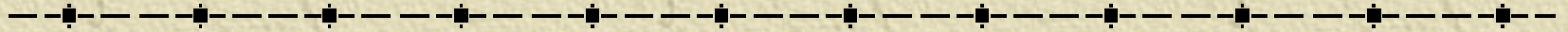


## Roadway Safety Improvement Program

---

- ✦ **The Secretary of Transportation is required to administer a program to improve traffic signs and pavement markings in all States.**
- ✦ **To be carried out in a manner consistent with the recommendations included in “Guidelines and Recommendations to Accommodate Older Drivers and Pedestrians (Federal Highways Administration, October 2001).**

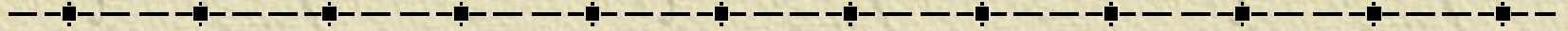
# Safety Incentives to Prevent Operation of Motor Vehicles By Intoxicated Persons



# Improvement or Replacement of Highway Features on National Highway System

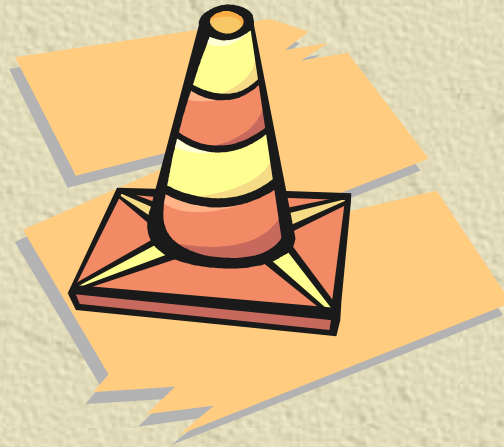
- 
- ✦ **The FHWA Policy on Implementation of “NCHRP Report 350- Recommended Procedures for the Safety Performance Evaluation of Highway Features” will be updated with special consideration for the following:**
    - ◆ **Shall address conditions under which States should improve or replace features with those that have been tested, evaluated and found to be acceptable under the revised report.**
    - ◆ **Shall consider types of highway features, cost-effectiveness, and practicality of replacement highway features.**

# Work Zone Safety Grants



## Work Zone Safety Grants

- ✦ The purpose of the Work Zone Safety Grant Program is to provide training to prevent or reduce highway work zone injuries and fatalities.



# Work Zone Safety Grants

---

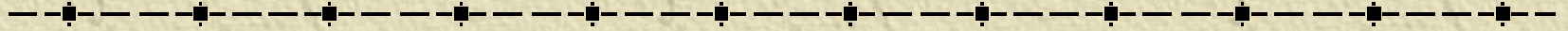
## ✦ Eligible Activities:

- ◆ Training for construction craft workers on prevention of injuries and fatalities in highway and road construction.
- ◆ Development of guidelines for the prevention of highway work zone injuries and fatalities.
- ◆ Training for State and local government transportation agencies and other groups implementing guidelines for the prevention of highway work zone injuries and fatalities.

# National Work Zone Safety Information Clearinghouse

- 
- ✦ **The Secretary of Transportation is required to provide grants from 2006-2009 to a national non-profit foundation for the operation of the National Work Zone Safety Information Clearinghouse.**
  - ✦ **The National Work Zone Safety Clearinghouse will assemble and disseminate information related to the improvement of roadway work zone safety.**

# Roadway Safety



# Roadway Safety

- 
- ✦ **The Secretary is required to assist the activities of a national non-profit organization that is dedicated to improving public road safety by:**
    - ✦ **Improving the quality of data pertaining to public road hazards and design features that impact the severity of motor vehicle crashes.**
    - ✦ **Establishing a public awareness campaign to educate State and local transportation officials, public safety officials, and motorists on how public road hazards and design features are a factor in motor vehicle crashes.**
    - ✦ **Promoting public road safety research and technology transfer activities.**

# Railway At-Grade Crossing Devices

- 
- ✦ 50% is formula funded through Surface Transportation Program
  - ✦ 50% is based on the number of public rail-highway crossings
  - ✦ 50% of the total funds received must be set aside for installation of protective devices
  - ✦ Up to 2% may be used for data analysis for the required report to USDOT

# HIGHWAY SAFETY IMPROVEMENT PROGRAM

