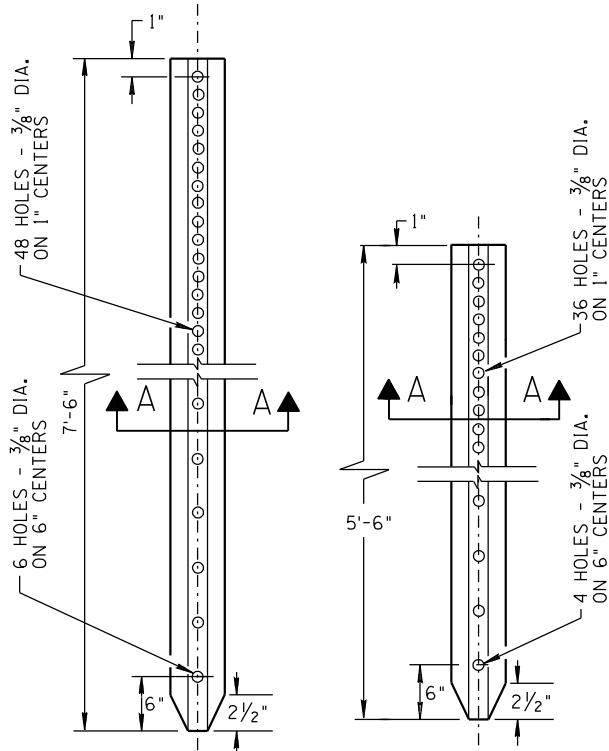
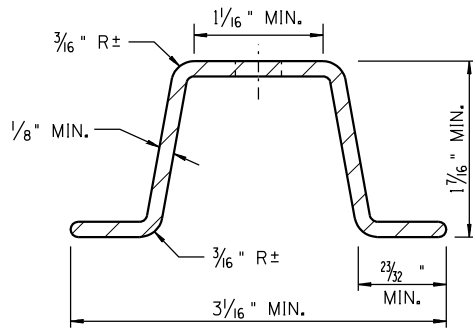


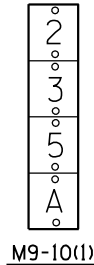
NO	DESCRIPTION OF REVISIONS	MADE BY	DATE
1	RE-ISSUE	L. LOPEZ	2/02
2	REVISED NOTES	L. LOPEZ	11/04
3			
4			



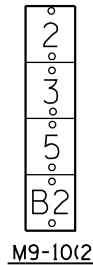
GALVANIZED STEEL POSTS



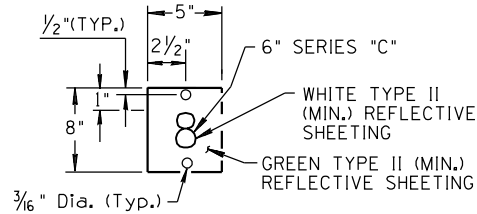
SECTION "A-A"



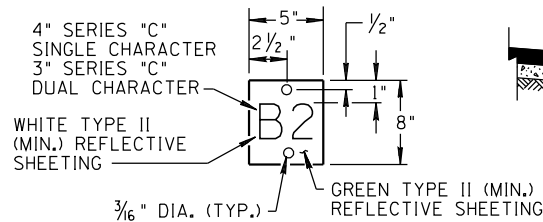
M9-10(1)



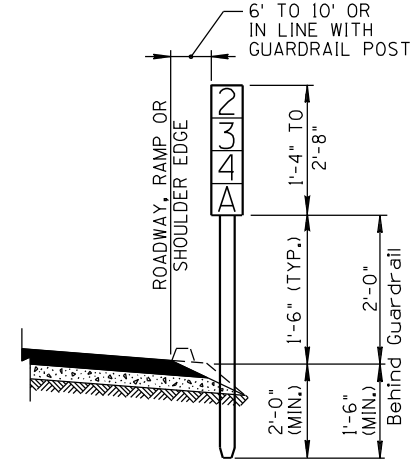
M9-10(2)



NUMERAL PLATE



LETTER PLATE




TYPICAL INSTALLATION

NOTES:

1. NUMERAL AND LETTER PLATES SHALL BE FABRICATED FROM .080" THICK 3003-H14, 3015, 5052-H38 OR 6061-T6 ALUMINUM ALLOY ETCHED ON BOTH SIDES.
2. REFLECTORIZED ELEMENTS SHALL BE FABRICATED FROM TYPE II MINIMUM REFLECTIVE SHEETING WHICH CONFORMS TO SECTION 1007 OF THE CURRENT EDITION OF THE ARIZONA DEPARTMENT OF TRANSPORTATION STANDARD SPECIFICATIONS FOR ROAD AND BRIDGE CONSTRUCTION. PLATES MAY HAVE DIRECT-APPLIED WHITE SHEETING OVER GREEN SHEETING BACKGROUND OR MAY BE SCREENED WITH GREEN INK OVER WHITE SHEETING.
3. STEEL POSTS SHALL CONFORM TO A.S.T.M. A499-81 GRADE 60, OR A.S.T.M. A576 GRADE 1080 OR A.S.T.M. A570 GRADE 60 AND SHALL WEIGHT 1.1 POUNDS PER FOOT WITH A WEIGHT TOLERANCE OF 5%. POSTS SHALL BE HOT-DIPPED GALVANIZED IN ACCORDANCE WITH A.S.T.M. A123.
4. EACH NUMERAL PLATE AND LETTER PLATE SHALL BE MOUNTED WITH TWO 3/16" DIAMETER ALUMINUM BLIND RIVETS OR 3/16" DIAMETER CORROSION RESISTANT STOVE BOLTS (DEFORM AFTER INSTALLATION). LENGTH SHALL BE AS REQUIRED.
5. ALL DIMENSIONS ARE IN INCHES, EXCEPT AS NOTED.

NOT TO SCALE

DESIGN APPROVED  DESIGNER	ARIZONA DEPARTMENT OF TRANSPORTATION INTERMODAL TRANSPORTATION DIVISION STANDARD DRAWINGS	REV. 11/04
	OFF MAINLINE REFERENCE MARKER DETAILS	DRAWING NO. M-30