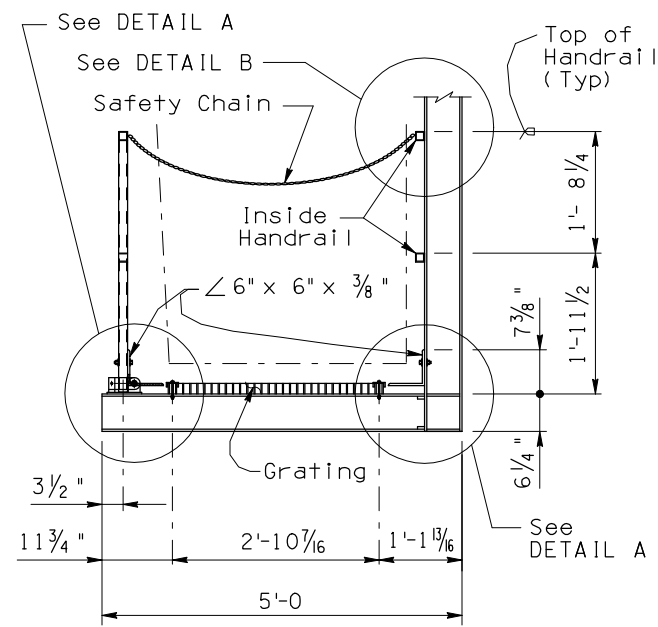
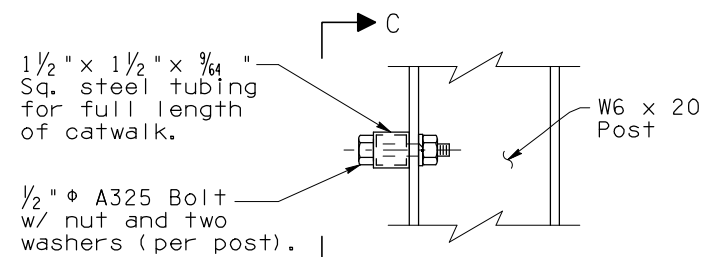


Note to Designer: The information presented in this Standard Detail has been prepared in accordance with recognized engineering principles and is for general use. It should not be used for specific application without competent professional examination and verification of its suitability and applicability by a licensed professional engineer. Contents within the inner border line shall not be altered.

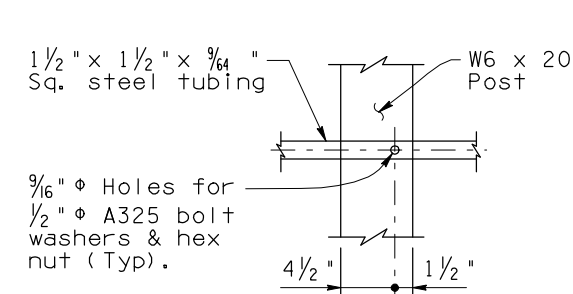
NO	DESCRIPTION OF REVISIONS	DATE
1	Original Issue	05-07
2		
3		
4		



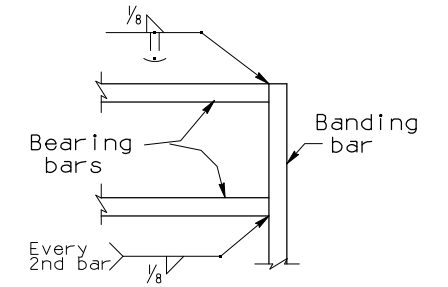
PART. SECTION OF DMS CATWALK



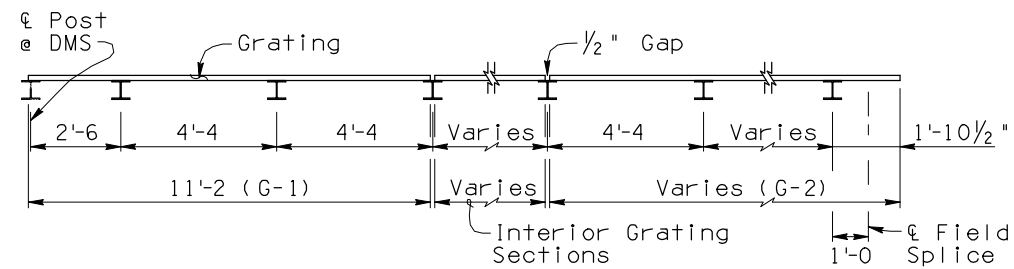
DETAIL B



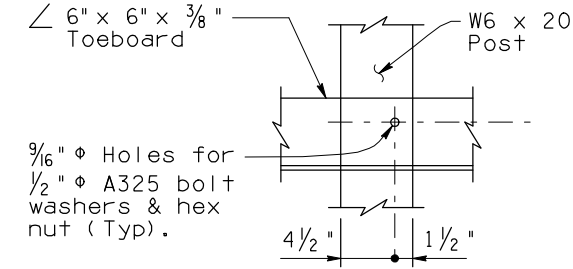
SECTION C-C



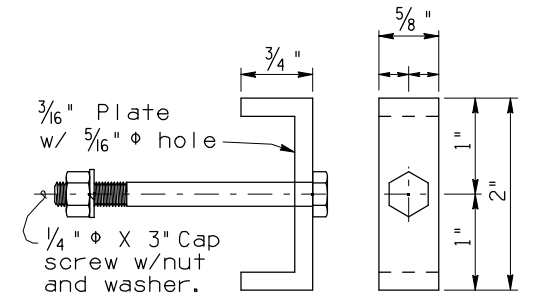
DETAIL C



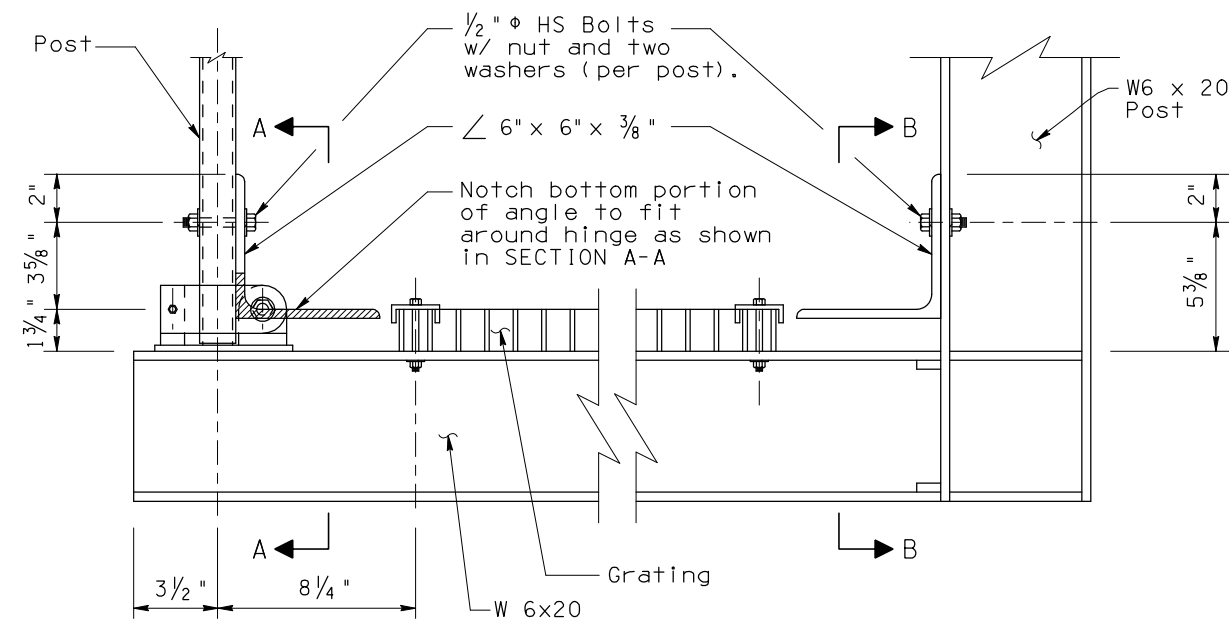
GRATING ELEVATION
(Lt. Side Shown, Rt. Side Opposite)



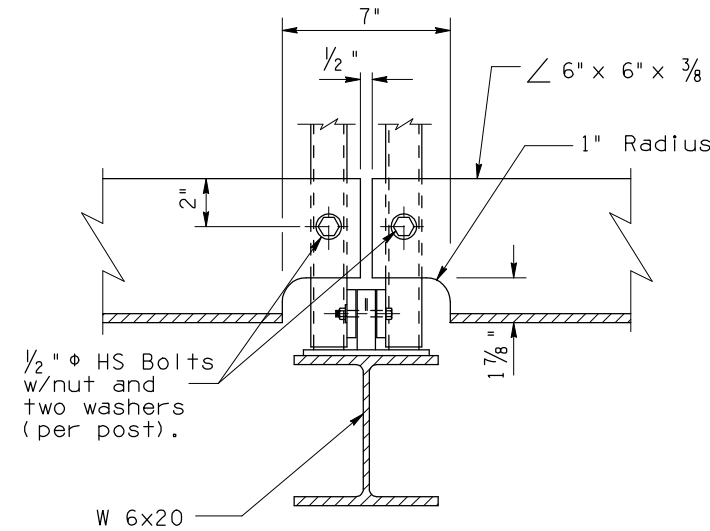
SECTION B-B



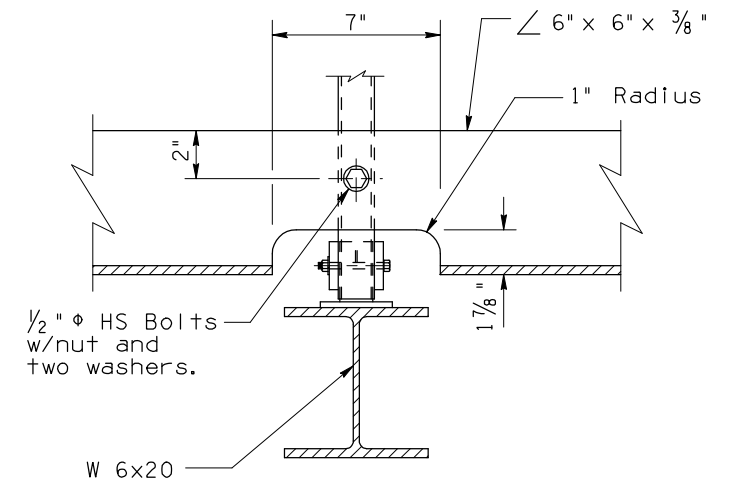
GRATING CLIP



DETAIL A



SECTION A-A
(Dual Posts)



SECTION A-A
(Single Post)

NOTE:

Welded grating shall meet the standard requirements of ANSI/NAAMM MGB 531-00. Grating shall be 1 3/4" x 3/16" bearing bars at 1 1/16" centers and cross bars at 4" centers. All grating to have 1 3/4" x 3/16" banding bars at both ends. Weld bearing bars to banding bars with 1/8" fillet weld, one side every second bar and as shown in Detail C. All grating to be straight and true after fabrication. Grating shall be galvanized. See Table for grating dimensions:

GRATING DIMENSIONS

Grate No.	Length	Width
G-1	11' -2	2' -11 13/16
Interior	Varies**	2' -11 13/16
G-2	Varies*	2' -11 13/16

* Maximum length of G-2 is 10'-6.
** Use additional interior grating sections of 4'-3 1/2, 8'-7 1/2 or 12'-11 1/2 if required.

DESIGN APPROVED <i>Shafiq U. Hasan</i>		ARIZONA DEPARTMENT OF TRANSPORTATION INTERMODAL TRANSPORTATION DIVISION BRIDGE GROUP STRUCTURE DETAIL	
APPROVED FOR DISTRIBUTION <i>Teon A. Nehme</i>		DYNAMIC MESSAGE SIGN CATWALK MISCELLANEOUS DETAILS	
ROUTE	PROJECT NO.	FA NO.	DRAWING NO. SD 9.52 (5 of 5)
LOCATION			SHEET NO. OF