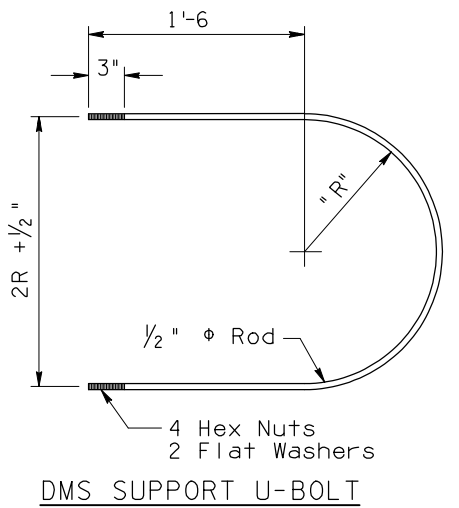
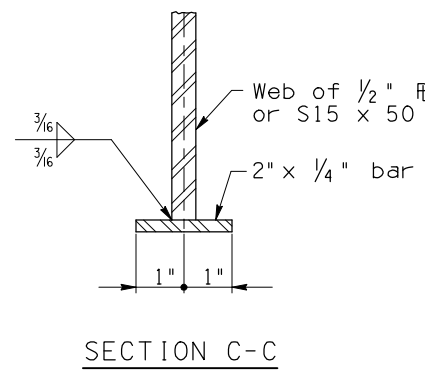
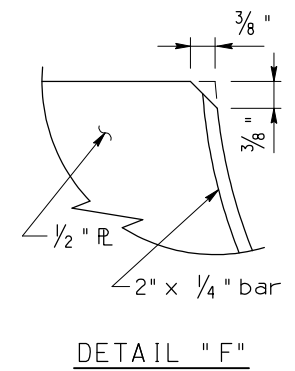
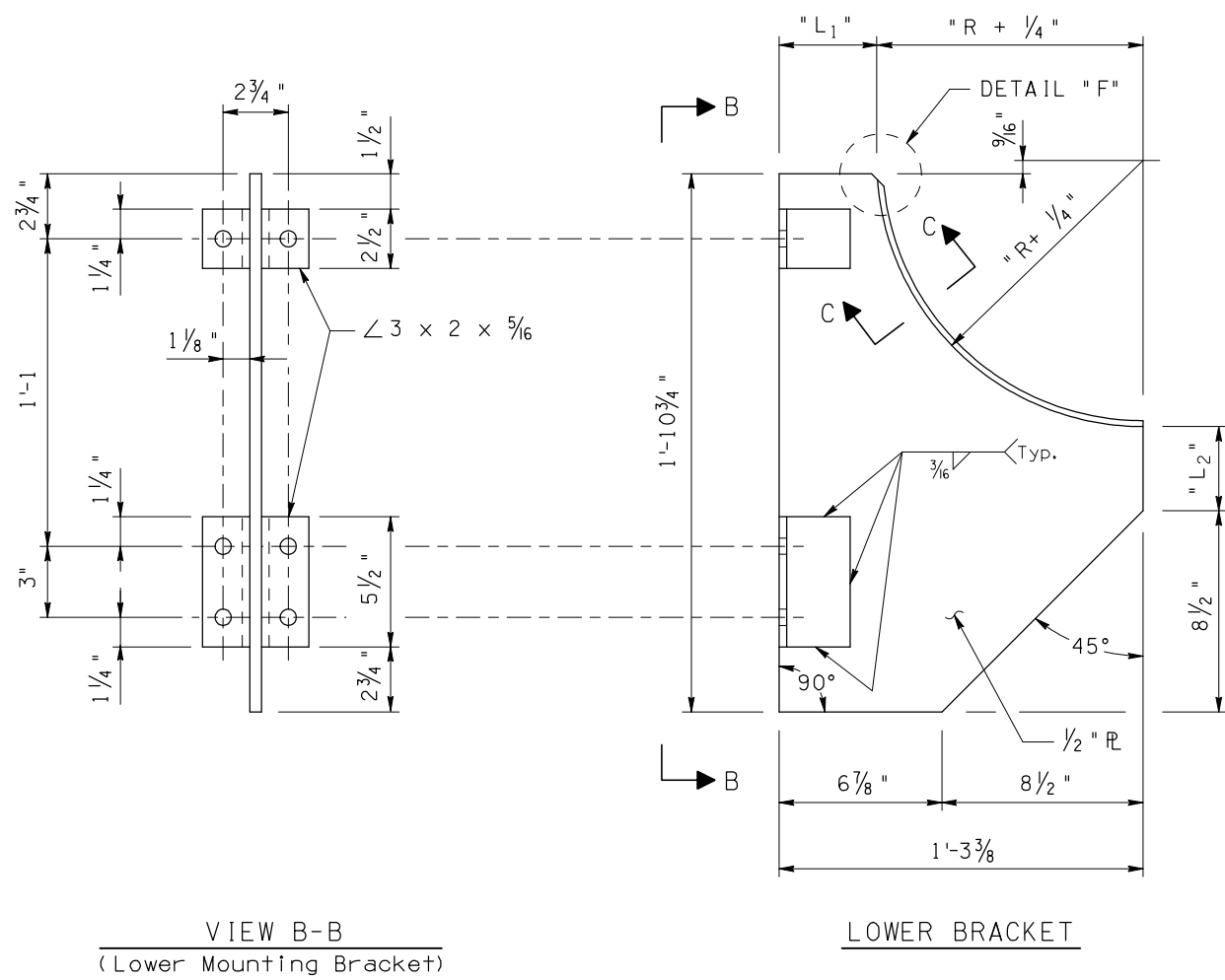
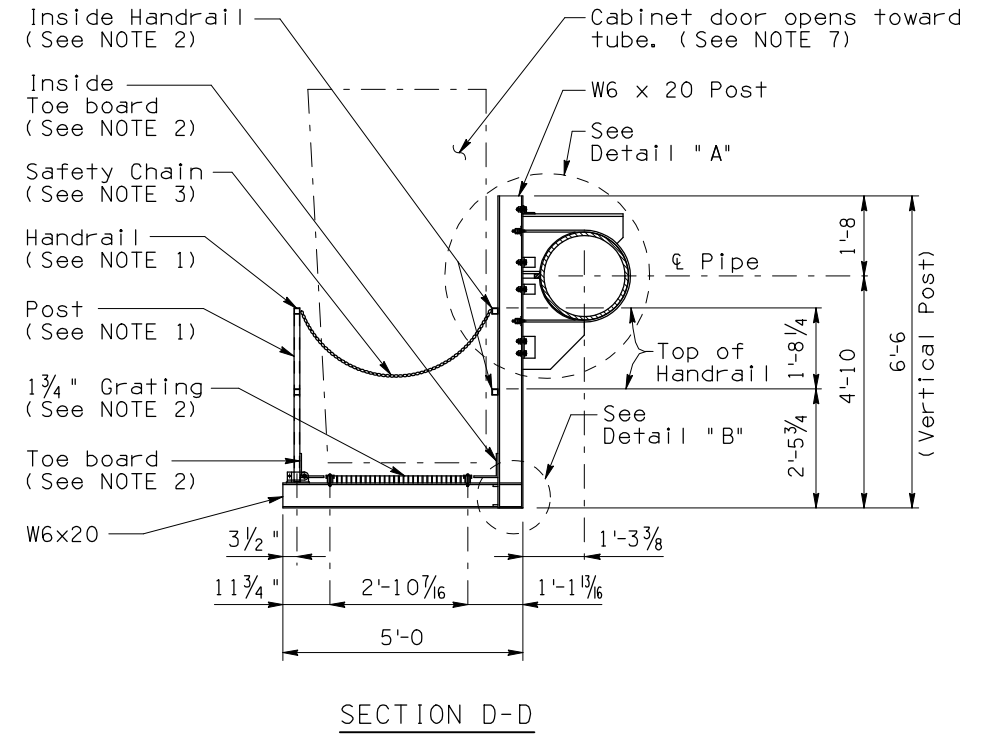
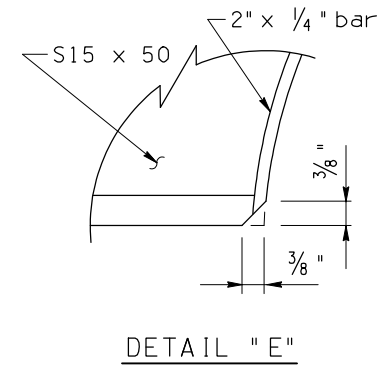
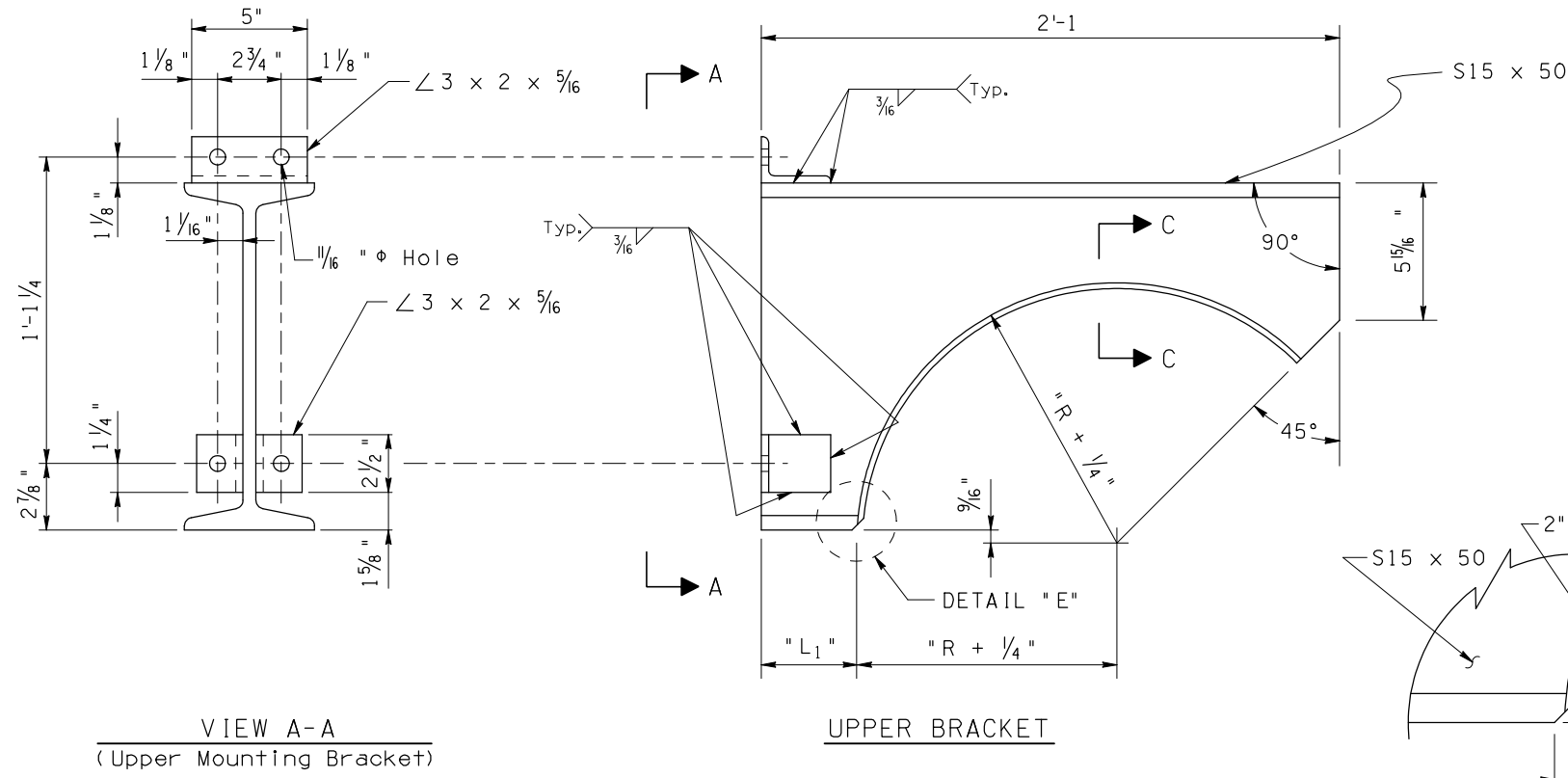


Note to Designer:  
 The information presented in this Standard Detail has been prepared in accordance with recognized engineering principles and is for general use. It should not be used for specific application without competent professional examination and verification of its suitability and applicability by a licensed professional engineer. Contents within the inner border line shall not be altered.

NO.	DESCRIPTION OF REVISIONS	MADE BY	DATE
1	Original Issue	SUH	05-07
2			
3			
4			



- NOTE:**
- See SD 9.52 (4 of 5) for handrail, post and hinge details.
  - See SD 9.52 (5 of 5) for inside handrails, grating and toeboard details.
  - 3/16" galvanized safety chain with (1) 1/4" snap hook at end of both catwalks.
  - See SD 9.52 (2 of 5) for Detail "A".
  - See SD 9.52 (2 of 5) for Detail "B".
  - Optional mast arm field splice, if any, shall not interfere with catwalk supports.
  - Cabinet door hinges shall be located at tube side to allow for railing movement with door open.

Frame Type	Nominal Pipe Dia.	R	L <sub>1</sub>	L <sub>2</sub>
2F	16"	8"	7 7/8"	6 9/16"
3F	20"	10"	5 5/8"	4 9/16"
4F	22"	11"	4 7/8"	3 9/16"

DESIGN APPROVED <i>Shafiq U. Hasan</i>		ARIZONA DEPARTMENT OF TRANSPORTATION INTERMODAL TRANSPORTATION DIVISION <b>BRIDGE GROUP STRUCTURE DETAIL</b>	
APPROVED FOR DISTRIBUTION <i>Teon A. Nehme</i>		DYNAMIC MESSAGE SIGN TUBULAR FRAME MOUNTING DETAILS	
ROUTE	PROJECT NO.	FA NO.	DRAWING NO. SD 9.52 (3 of 5)
LOCATION			SHEET NO. OF