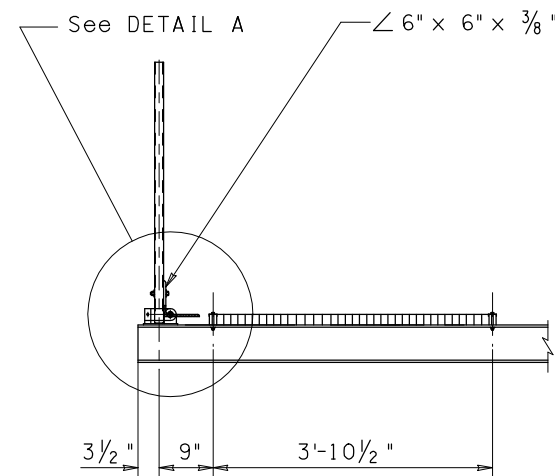
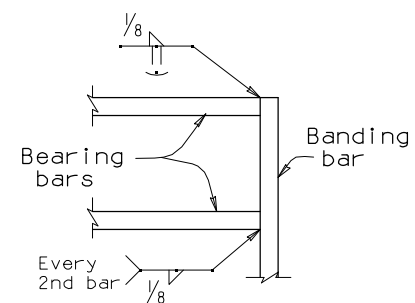


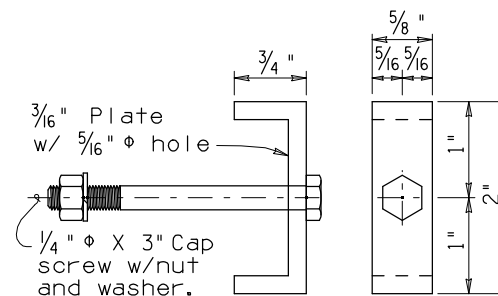
F.H.W.A. REGION	STATE	PROJECT NO.	SHEET NO.	TOTAL SHEETS	AS BUILT
9	ARIZ.				



PARTIAL SECTION OF VMS CATWALK
Scale: 3/4" = 1'-0"



DETAIL B



GRATING CLIP

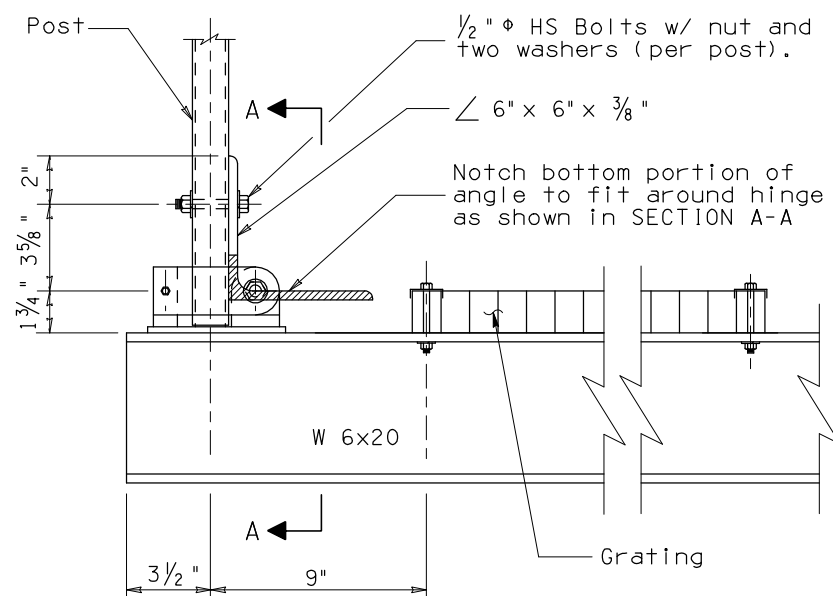
NOTE:

Welded grating to be Irving Type IWA or approved equal. 1 3/4" x 3/16" bearing bars at 1 3/16" centers and cross bars at 4" centers. All grating to have 1 3/4" x 3/16" banding bars at both ends. Weld bearing bars to banding bars with 1/8" fillet weld one side every second bar and as shown in detail B. All grating to be straight and true after fabrication. See table below for grating dimensions.

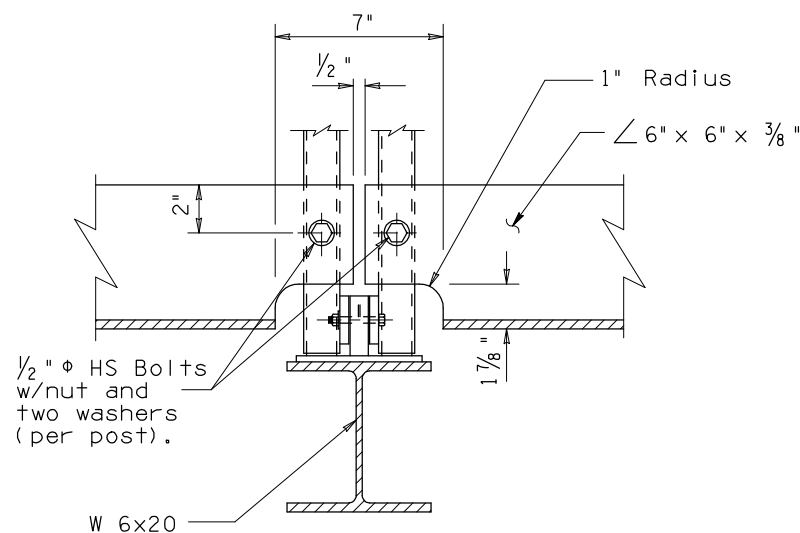
GRATING DIMENSIONS		
Grate No.	Length	Width
G-1	9'-0"	3'-11 1/16"
G-2	10'-8 1/2"	3'-11 1/16"
G-3	9'-0"	3'-11 1/16"

Note to Designer:
 The information presented in this Standard Detail has been prepared in accordance with recognized engineering principles and is for general use. It should not be used for specific application without competent professional examination and verification of its suitability and applicability by a licensed professional engineer. Contents within the inner border line shall not be altered.

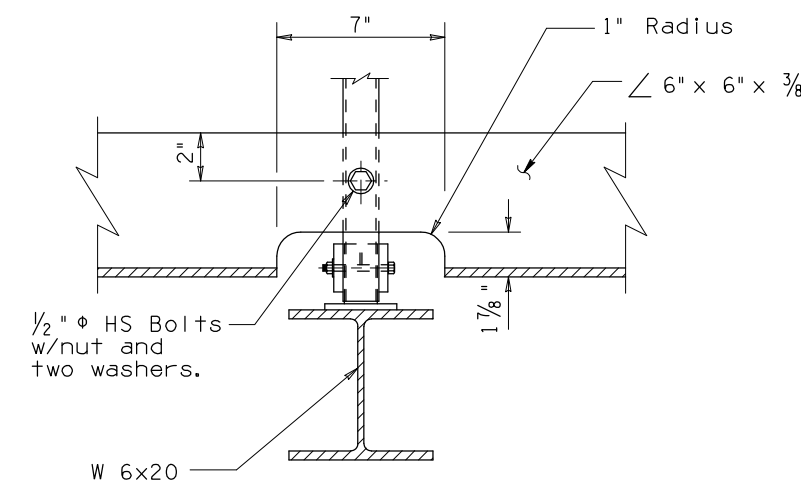
NO.	DESCRIPTION OF REVISIONS	MADE BY	DATE
1	Original Issue	SLH	1-00
2	Remove harness, drip pan, widen grating, enlarge base PL hole	SLH	7-00
3			
4			



DETAIL A



SECTION A-A
(Dual Posts)



SECTION A-A
(Single Post)

DESIGN APPROVED <i>Shafiq U. Hasan</i>	ARIZONA DEPARTMENT OF TRANSPORTATION INTERMODAL TRANSPORTATION DIVISION BRIDGE GROUP STRUCTURE DETAIL
APPROVED FOR DISTRIBUTION <i>J. Daniel Davis</i>	VARIABLE MESSAGE SIGN CATWALK MISCELLANEOUS DETAILS
ROUTE	LOCATION
TRACS NO.	DRAWING NO. SD 9.50(5 OF 5) OF