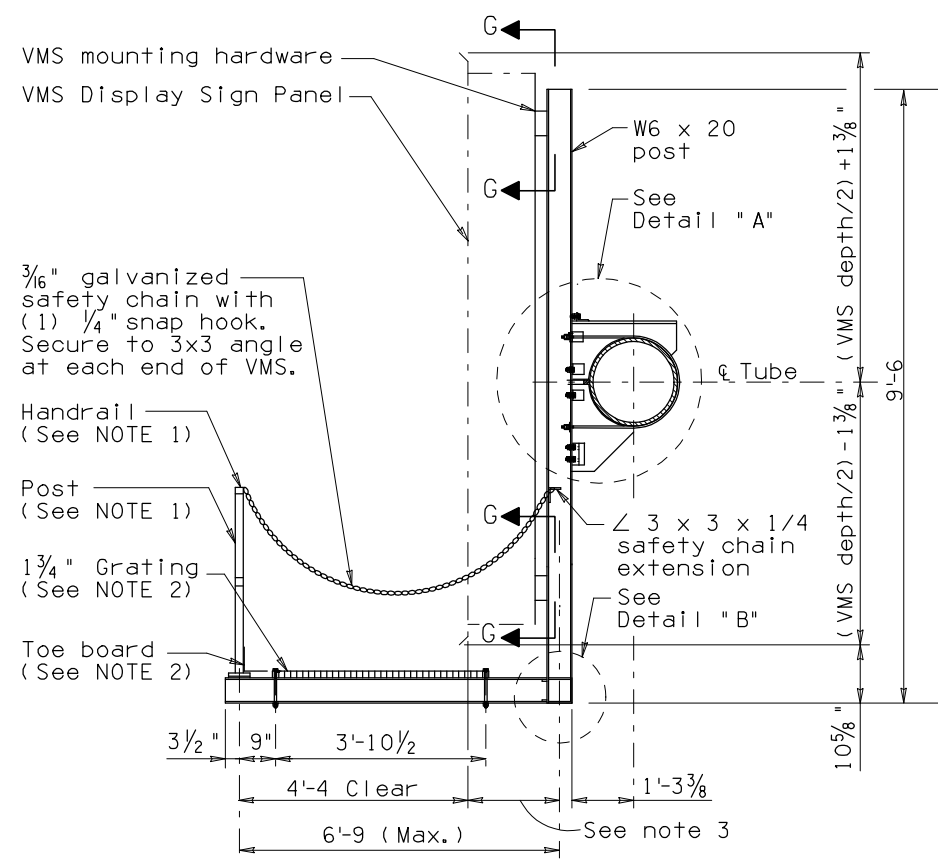
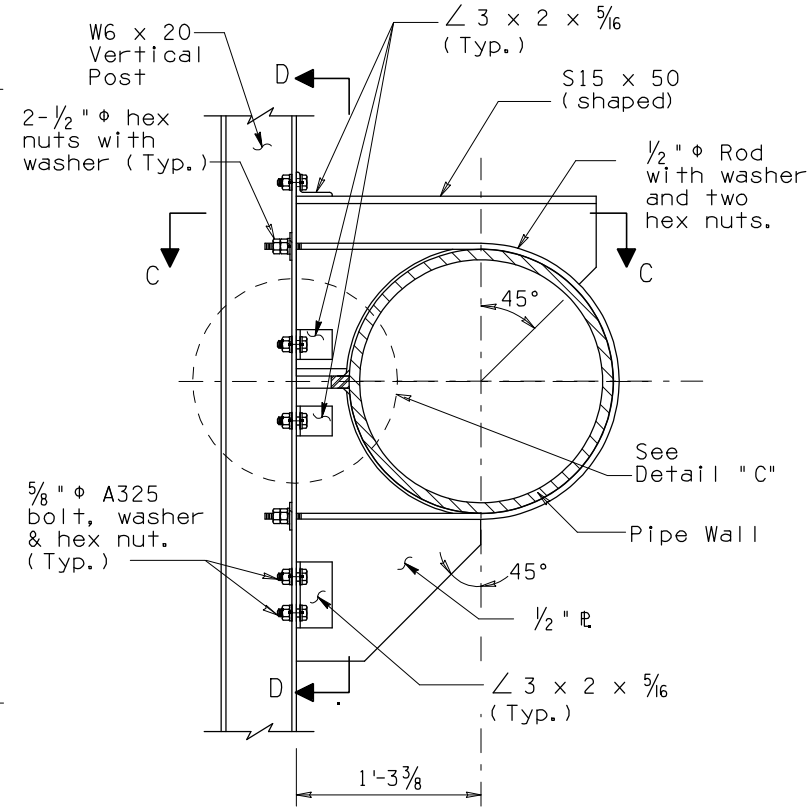


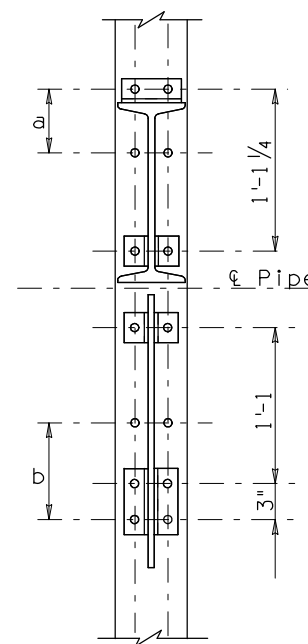
F.H.W.A. REGION	STATE	PROJECT NO.	SHEET NO.	TOTAL SHEETS	AS BUILT
9	ARIZ.				



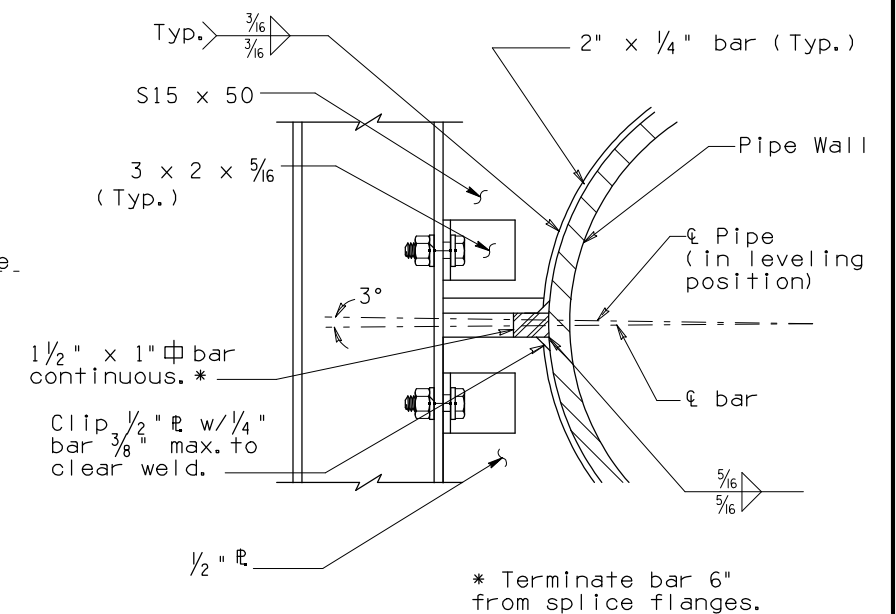
SECTION A-A



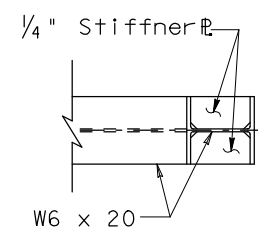
DETAIL "A"



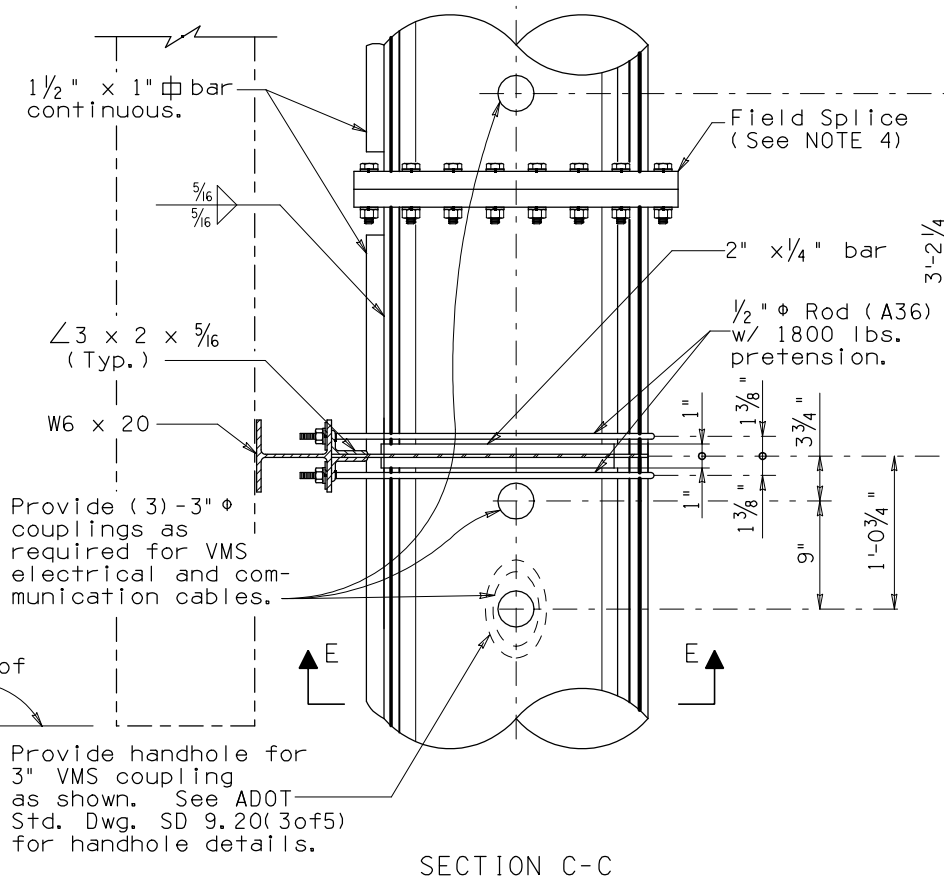
SECTION D-D



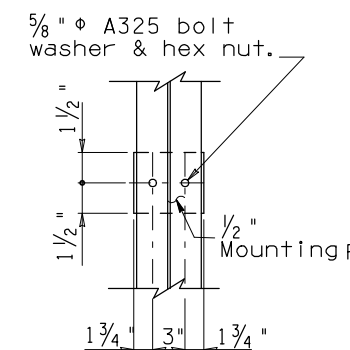
DETAIL "C"



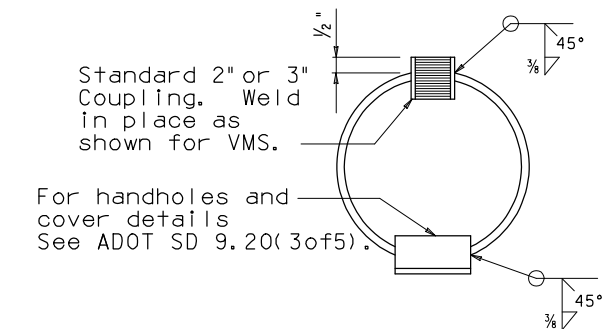
SECTION F-F



SECTION C-C



SECTION G-G



SECTION E-E

Frame Type	Nominal Pipe Dia.	R	a	b
1F	12"	6 3/8"	10 1/16"	12 1/16"
2F	16"	8"	8 7/16"	11 1/16"
3F	20"	10"	6 7/16"	9 1/16"
4F	22"	11"	5 7/16"	8 1/16"

NOTE:

- See SD 9.50 Sheet 4 of 5 for handrail, post and hinge details.
- See SD 9.50 Sheet 5 of 5 for grating and toeboard details.
- Dimensions to be determined from VMS sign manufacturer. Grating shall extend under face of VMS sign panel.
- Optional mast arm field splice, if any, shall not interfere with VMS panel supports, handhole or coupling locations.

DESIGN APPROVED <i>Shafiq U. Hasan</i>	ARIZONA DEPARTMENT OF TRANSPORTATION INTERMODAL TRANSPORTATION DIVISION <b>BRIDGE GROUP STRUCTURE DETAIL</b>
APPROVED FOR DISTRIBUTION <i>J. Daniel Davis</i>	VARIABLE MESSAGE SIGN TUBULAR FRAME MOUNTING DETAILS
ROUTE	LOCATION
TRACS NO.	DRAWING NO. SD 9.50(2 of 5)

Note to Designer:  
 The information presented in this Standard Detail has been prepared in accordance with recognized engineering principles and is for general use. It should not be used for specific application without competent professional examination and verification of its suitability and applicability by a licensed professional engineer. Contents within the inner border line shall not be altered.

NO.	DESCRIPTION OF REVISIONS	MADE BY	DATE
1	Original Issue	6UH	7-99
2	Add Catwalk	6UH	1-00
3	Remove harness, drip pan, widen grating, enlarge base PL, hole	6UH	7-00
4	Frame Type and SD 9.20 reference	6UH	8-02