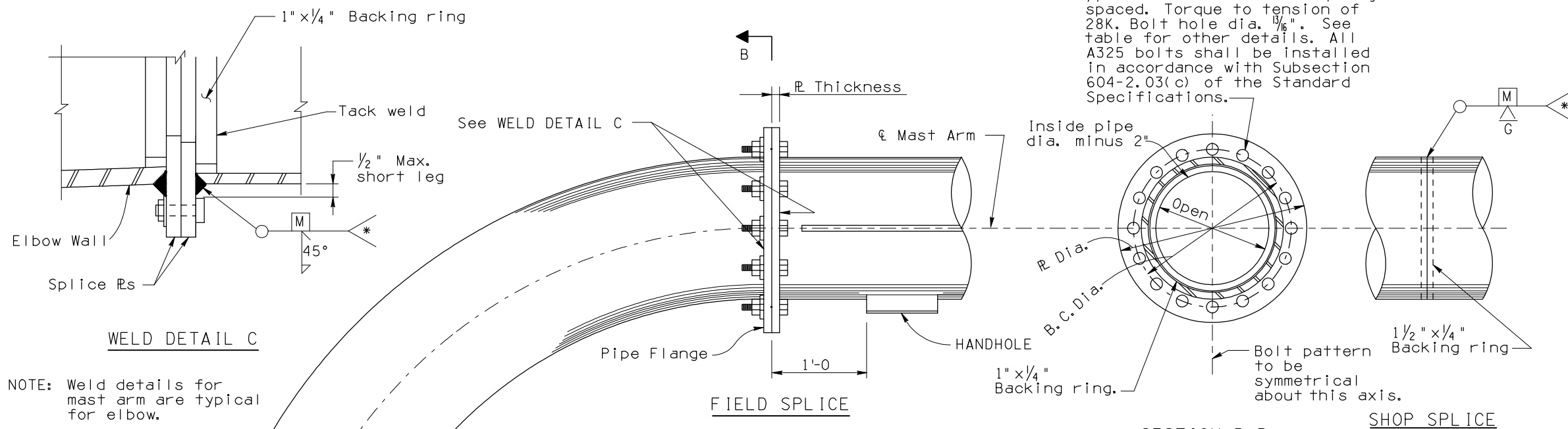


F.H.W.A. REGION	STATE	PROJECT NO.	SHEET NO.	TOTAL SHEETS	AS BUILT
9	ARIZ.				

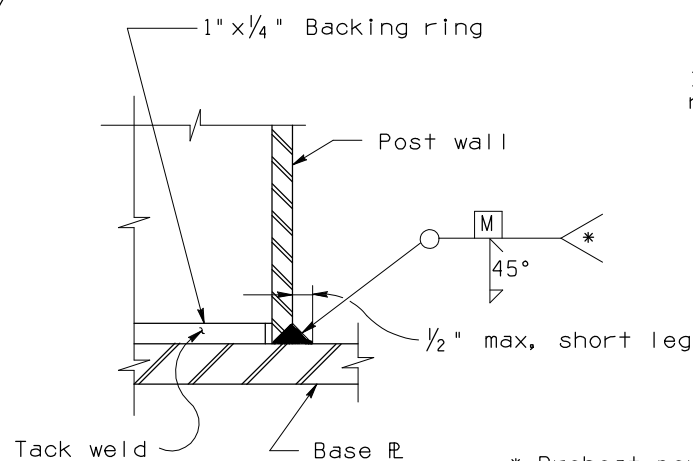
3/4" φ ATSM A-325N bolts equally spaced. Torque to tension of 28K. Bolt hole dia. 13/16". See table for other details. All A325 bolts shall be installed in accordance with Subsection 604-2.03(c) of the Standard Specifications.



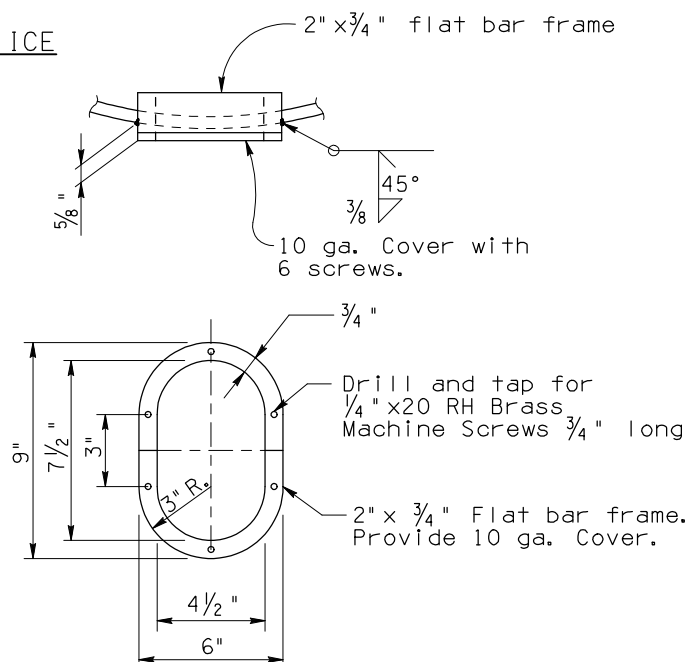
NOTE: Weld details for mast arm are typical for elbow.

NOTE: Provide handholes for TUBULAR OVERHEAD FRAME on one side only.

Optional Shop Splice See WELD DETAIL B



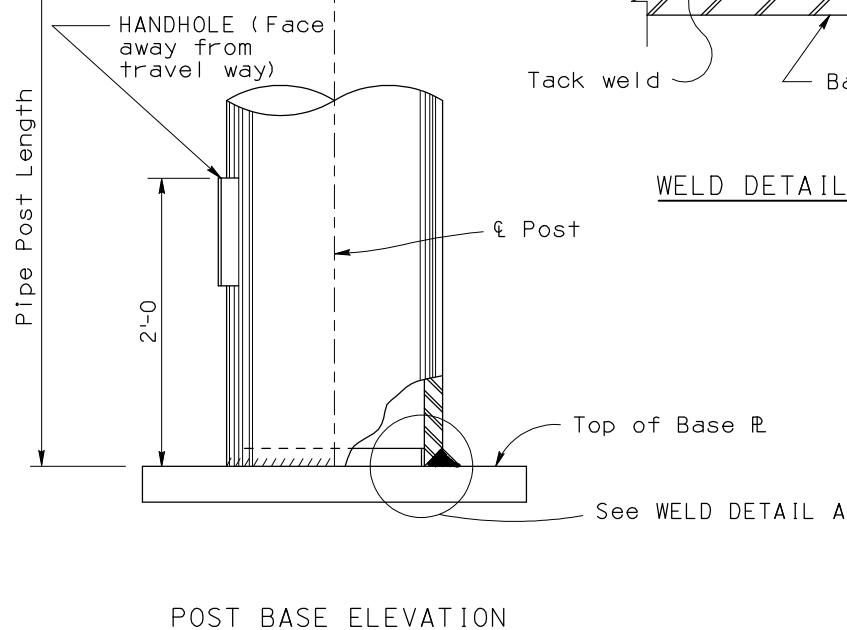
\* Preheat per AWS reqmt.



HANDHOLE & COVER DETAILS

Note to Designer: The information presented in this Standard Detail has been prepared in accordance with recognized engineering principles and is for general use. It should not be used for specific application without competent professional examination and verification of its suitability and applicability by a licensed professional engineer. Contents within the inner border line shall not be altered.

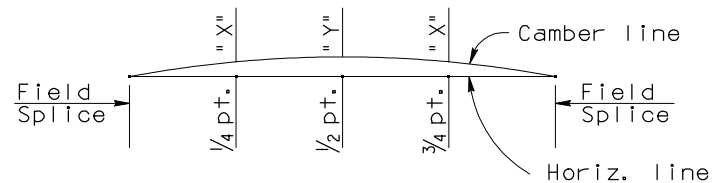
NO.	DESCRIPTION OF REVISIONS	MADE BY	DATE
1	Original Issue	J.R.P.	6-01
2			
3			
4			



POST BASE ELEVATION

NOTE: For Base R Details see Drawing 2 of 5.

Field Splice					
Type	Pipe Dia.	R Dia.	R Thickness	No. of bolts	B.C. Dia.
1F	12"	18"	1"	16	15 1/2"
2F	16"	21"	1 1/4"	22	18 1/2"
3F	20"	25"	1 3/8"	29	22 1/2"
4F	22"	27"	1 1/2"	31	24 1/2"



CAMBER DIAGRAM

Camber shown is required to be built into horizontal members. Members shall be erected so that camber is provided above the Horizontal line.

CAMBER			
FRAME NUMBER	Max. Span	" X"	" Y"
1F	70'	1"	1 1/4"
1F	90'	2"	2 3/4"
2F	46'	1/4"	3/8"
2F	58'	1/2"	5/8"
2F	70'	3/4"	1"
3F	82'	7/8"	1 1/8"
3F	94'	1 1/4"	1 3/4"
3F	106'	1 3/4"	2 3/8"
4F	118'	2"	3"
4F	130'	3"	4 1/8"
4F	142'	3 7/8"	5 5/8"

NOTE:

Calculated camber provides for deflections due to dead load of tubular structure and dead loads due to sign panels and attachments. For spans other than shown interpolate for X and Y dimensions.

DESIGN APPROVED <i>James R. Pyne</i>	ARIZONA DEPARTMENT OF TRANSPORTATION INTERMODAL TRANSPORTATION DIVISION <b>BRIDGE GROUP STRUCTURE DETAIL</b>
APPROVED FOR DISTRIBUTION <i>J. Daniel Davis</i>	TUBULAR SIGN STRUCTURES TUBULAR FRAME POST AND MAST ARM DETAILS
ROUTE LOCATION	DRAWING NO. SD 9.20 (3 of 5)
TRACS NO.	OF