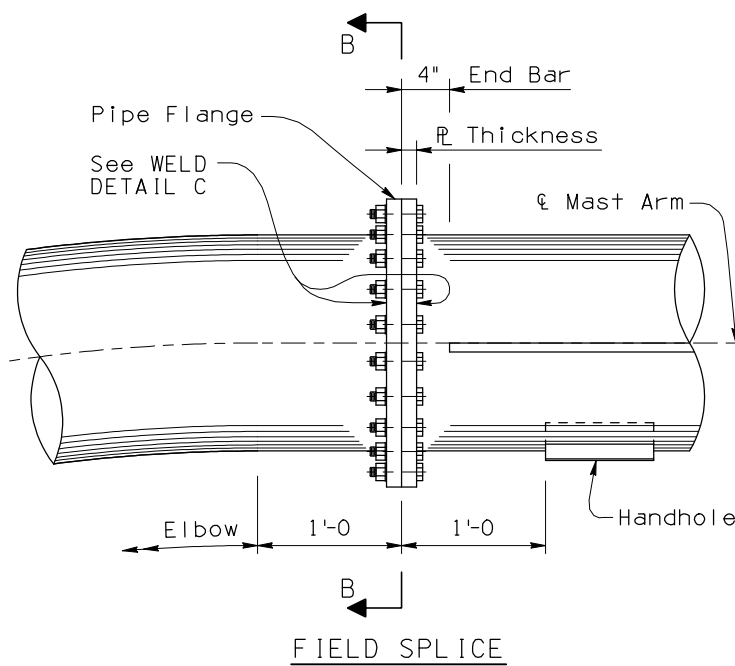
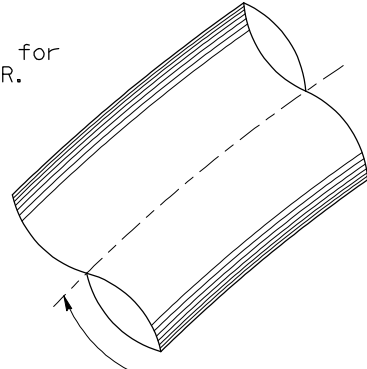


Note to Designer:
 The information presented in this Standard Detail has been prepared in accordance with recognized engineering principles and is for general use. It should not be used for specific application without competent professional examination and verification of its suitability and applicability by a licensed professional engineer. Contents within the inner border line shall not be altered.

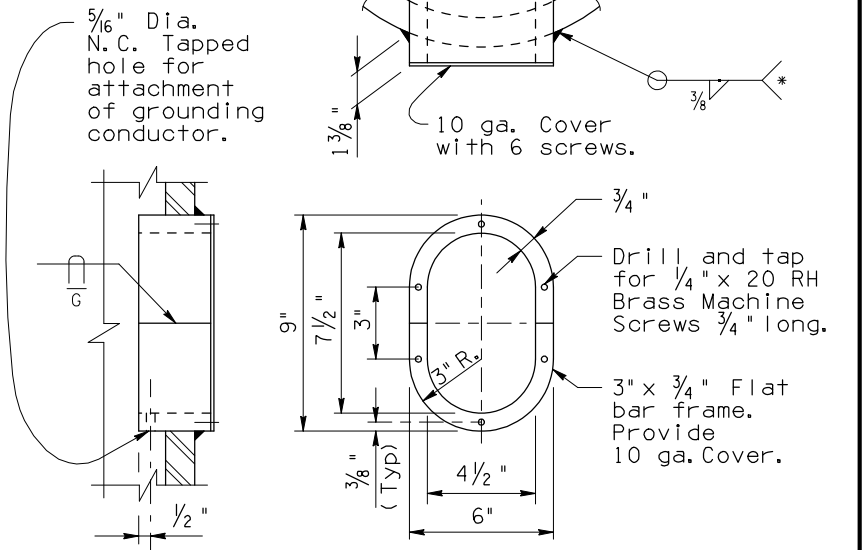
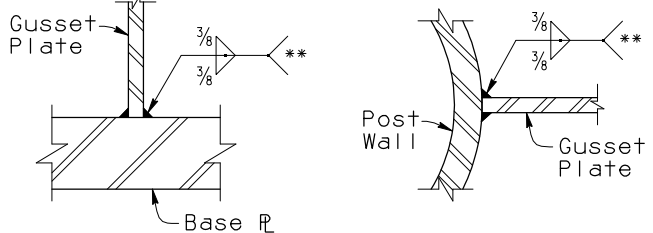
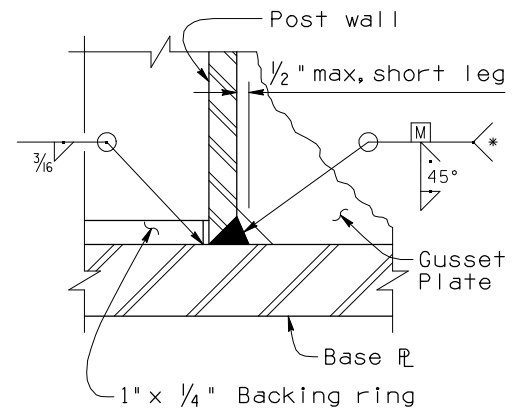
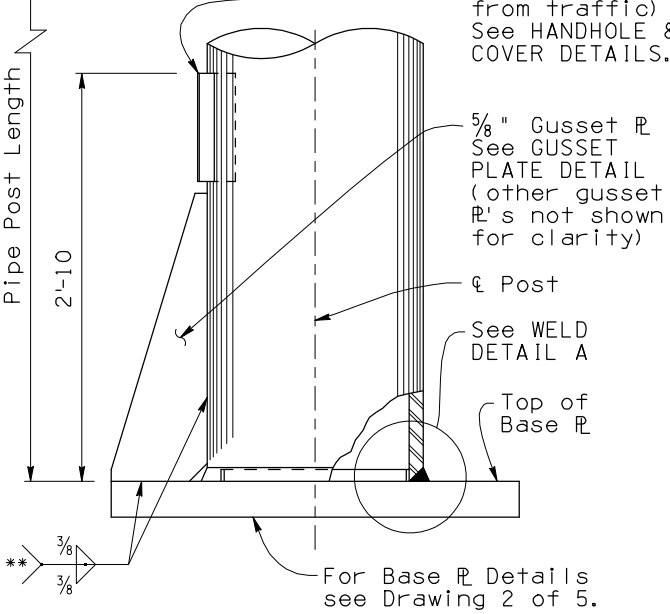
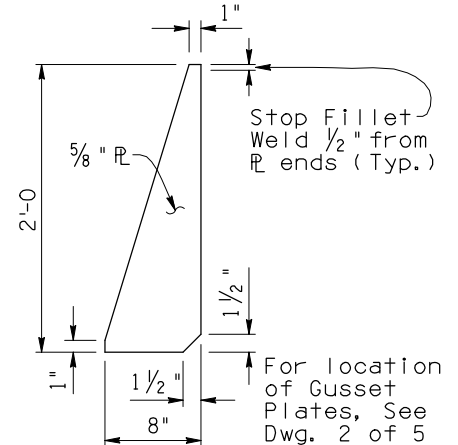
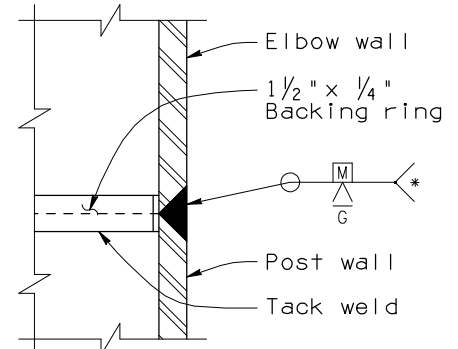
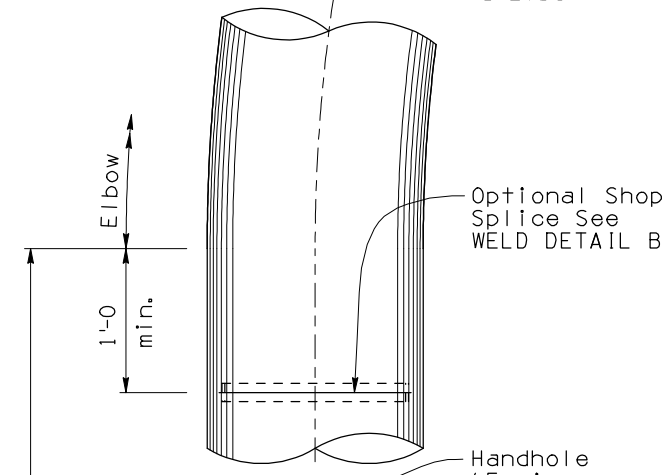
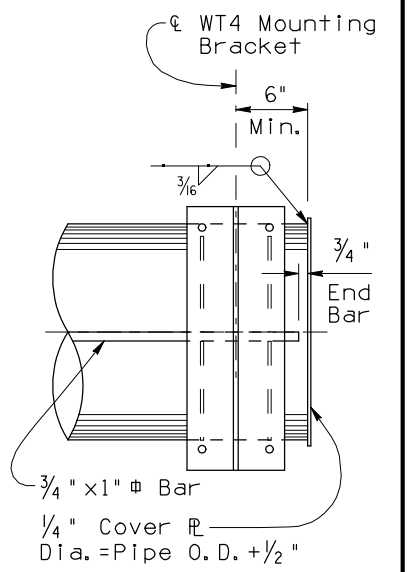
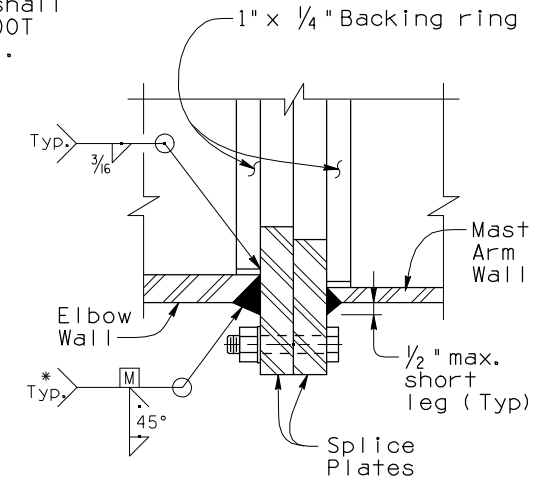
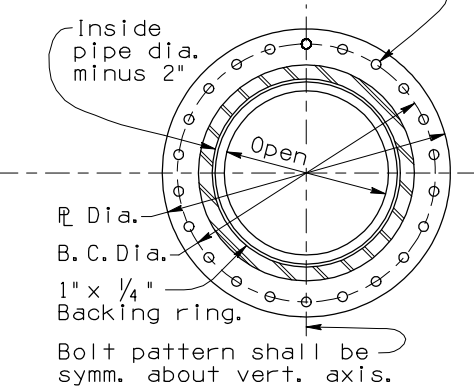
NO.	DESCRIPTION OF REVISIONS	DATE	MADE BY
1	Original Issue	6-01	U.R.P.
2	General Update	3-11	G.U.H.
3			
4			

Field Splice					
Frame Type	Pipe Dia.	R Dia.	R Thickness	No. of Bolts	B. C. Dia.
1C	16"	22"	1 1/4"	22	19 1/2"
2C	18"	24"	1 3/8"	26	21 1/2"
3C	20"	26"	1 3/8"	29	23 1/2"
4C	22"	28"	1 1/2"	31	25 1/2"

NOTE:
 Provide handholes for TUBULAR CANTILEVER. See HANDHOLE & COVER DETAILS.



3/4" ϕ ATSM A325 bolts equally spaced. Bolt hole dia. = 13/16". Torque bolts to a tension of 28K. All A325 bolts shall be installed in accordance with ADOT Standard Specification 604-2.03(c). See table for other details.



* Preheat per AWS requirements.

** Stop Fillet Weld 1/2" from R ends.

DESIGN APPROVED <i>Shafiq U. Hasan</i>		ARIZONA DEPARTMENT OF TRANSPORTATION INTERMODAL TRANSPORTATION DIVISION BRIDGE GROUP STRUCTURE DETAIL	
APPROVED FOR DISTRIBUTION <i>Tean A. Nehme</i>		TUBULAR SIGN STRUCTURES TUBULAR CANTILEVER POST AND MAST ARM DETAILS	
ROUTE	PROJECT NO.	FA NO.	DRAWING NO. SD 9.10 (3 of 5)
LOCATION			SHEET NO. OF